

RECEIVED

NOV 03 2025

Town of Highland Beach, FL  
Town Clerk's Office



villa magna

November 3, 2025

Lanelda,

I've provided binders for all of the Commissioners, David Allen and Jeff Remas, and yourself.

Please distribute for us and we'll see you at 1:30 tomorrow.

Wish us luck!

Ellen



Ellen Bonder  
General Manager  
LCAM

CONDOMINIUM ASSOCIATION, INC.  
2727 South Ocean Boulevard  
Highland Beach Florida 33487

P-561-272-1576 ext. 2  
manager@villamagnacondominium.com

Public Comment 11/4/2025 Town Comm. Mtg



RECEIVED

NOV 03 2025

Town of Highland Beach, FL  
Town Clerk's Office

October 31, 2025

Dear Highland Beach Commissioners and Staff,

We hope this finds everyone well and looking forward to a great season! We're excited to share our proposed plans to replace our existing Monument Signage and add an additional sign on the west side of A1A. We conceived of this project when the FDOT A1A project was announced, and have worked for many months on the designs of the new signage, along with a renovation of our landscaping on our front lawn and our west side "park".

Our major concern is SAFETY, and our most important objective is to replace our current signage with new signage that is designed and located to produce greater visibility and improved sight-lines. Our current conditions are extremely dangerous. We have 370 linear feet of frontage and three driveways, and we border with the hotel on our south side, which adds tremendously to our traffic volumes. We constantly witness cars and trucks pulling into one of our driveways, only to back into traffic to turn around. The plans that we propose include only one item that we are asking for your support to resolve and approve, and that is the 2<sup>nd</sup> sign on the south side of our ramp to the parking deck.

We have had a preliminary meeting with Staff and we're including a handout for all five Commissioners, along with Jeff and Ingrid. Our plan is to attend the November 4<sup>th</sup> Town Commission meeting and speak under Public Remarks. We will be respectfully requesting your cooperation and support by approving our "code exception". We understand that this is our only path, and look forward to your comments.

Thank you very much in advance for your consideration of this matter.

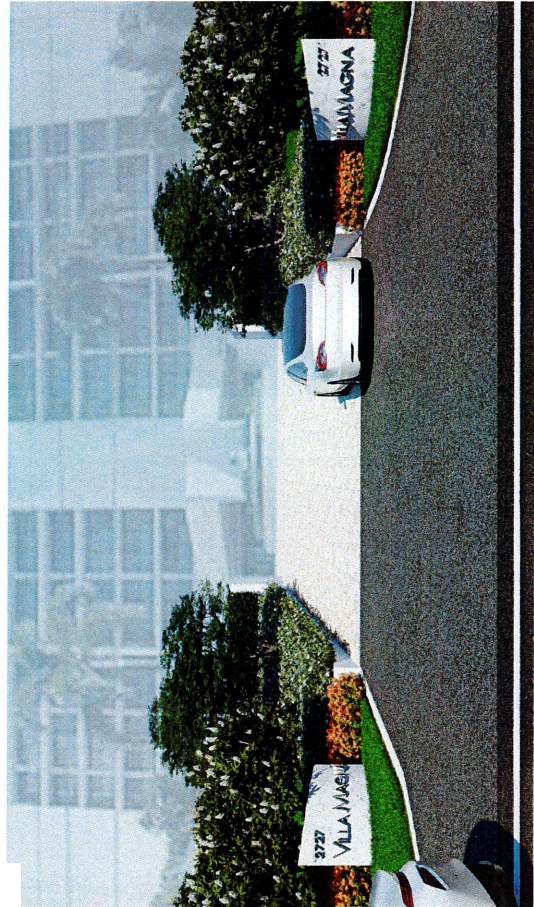
Respectfully,

THE VILLA MAGNA BOARD OF DIRECTORS

Public Comment 11/4/2025 Town Comm. Mtg.



EXISTING ENTRY SIGN



PROPOSED ENTRY SIGNS



PROPOSED ENTRY SIGNS (NIGHT RENDERING)



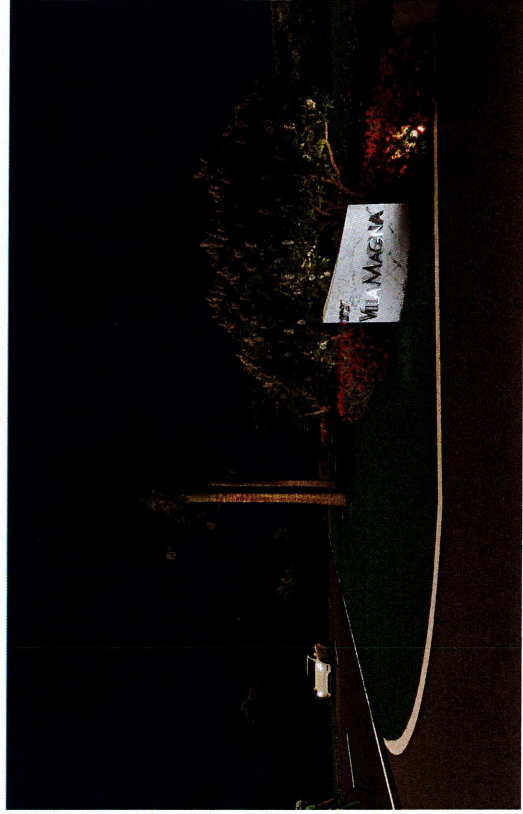
EXISTING ENTRY SIGN (NORTHERN SIDE)



PROPOSED ENTRY SIGN (NORTHERN SIDE)



EXISTING ENTRY SIGN (NORTHERN SIDE) - NIGHT VIEW



PROPOSED ENTRY SIGN (NORTHERN SIDE) - NIGHT RENDERING



DIRECTIONAL SIGN - NORTH SERVICE (EXISTING) - NIGHT VIEW



DIRECTIONAL SIGN - NORTH SERVICE (PROPOSED)



DIRECTIONAL SIGN - NORTH SERVICE (EXISTING)



DIRECTIONAL SIGN - NORTH SERVICE (PROPOSED) - NIGHT RENDER



DIRECTIONAL SIGN - SOUTH PRIVATE (EXISTING)



DIRECTIONAL SIGN - SOUTH PRIVATE (PROPOSED)



DIRECTIONAL SIGN - SOUTH PRIVATE (EXISTING) - NIGHT VIEW



DIRECTIONAL SIGN - SOUTH PRIVATE (PROPOSED) - NIGHT RENDER



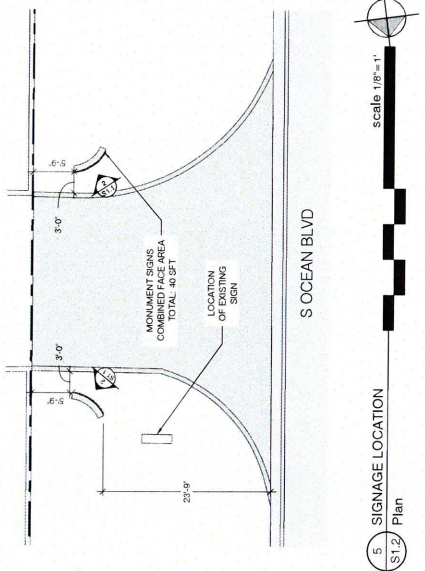
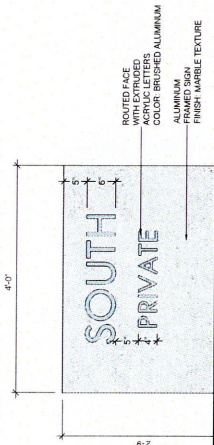
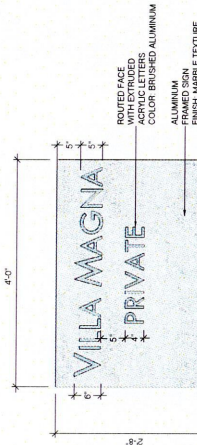
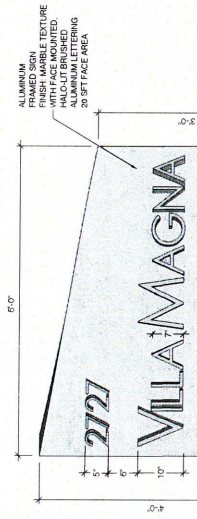
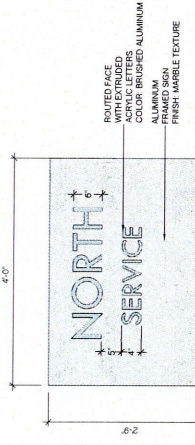
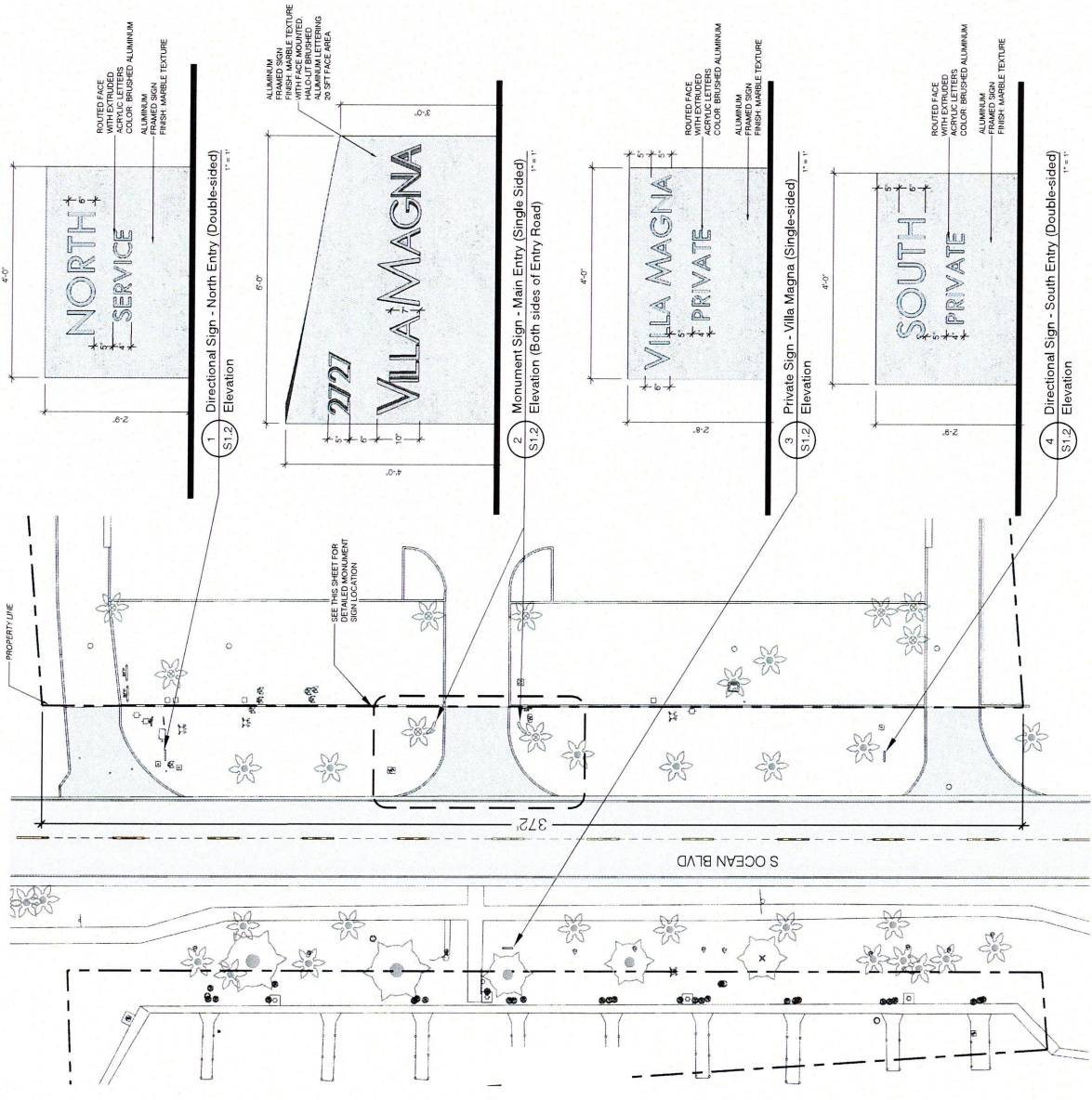
ST SIDE - PRIVATE VILLA MAGNA PRIVATE SIGN (EXISTING)

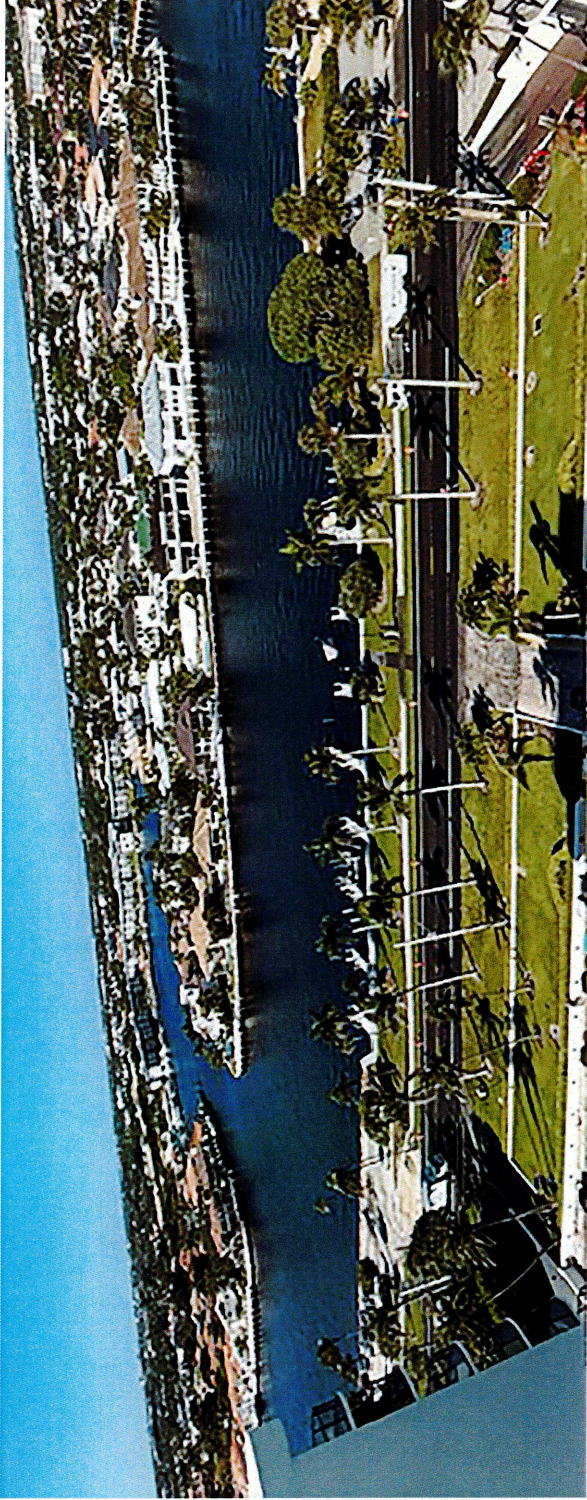


WEST SIDE - PRIVATE VILLA MAGNA PRIVATE SIGN (PROPOSED)



WEST SIDE - PRIVATE VILLA MAGNA PRIVATE SIGN (PROPOSED) - NIGHT RENDER

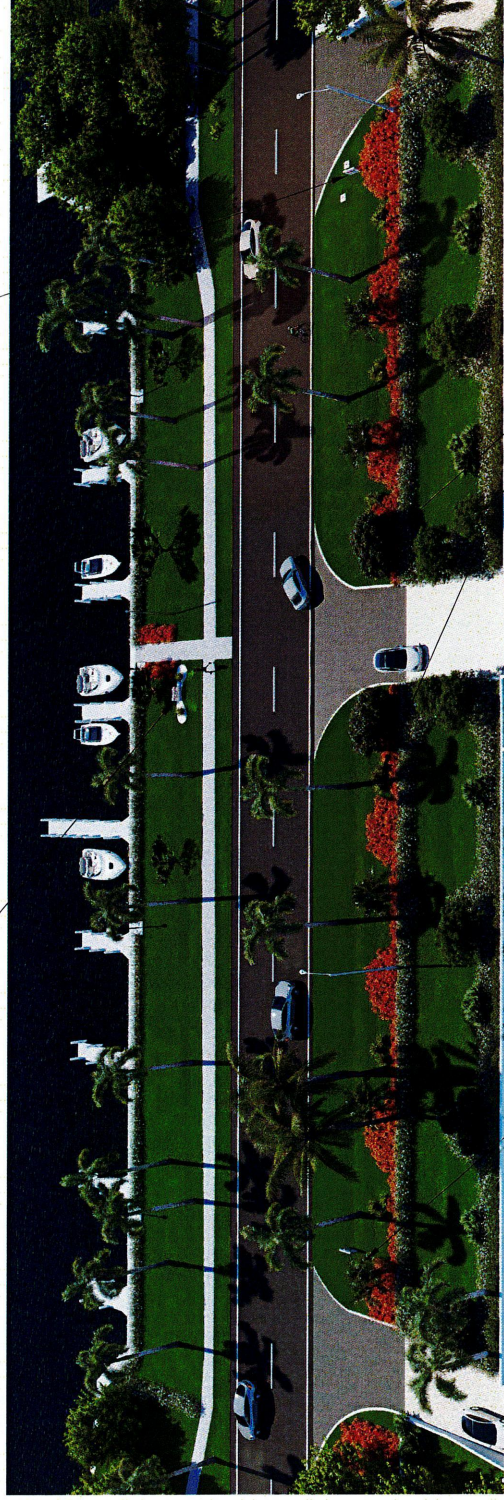




**EXISTING BIRDS EYE - PROJECT VIEW**

Private Sign - Villa Magna (Single-sided)

Directional Sign - North Entry (Double-sided)



Directional Sign - South Entry (Double-sided)

Monument Signs - Main Entry (Single-sided)

**PROPOSED BIRDS EYE - PROJECT VIEW**