



SUBMITTAL

Project

Highland Beach Library

Date

Monday, October 7, 2024

Tom Griswold

Table Of Contents

Project: Highland Beach Library
Prepared By: Tom Griswold

10/08/2024
07:29PM

Performance Summary.....	3
Certified Drawing.....	6
Performance Summary.....	7
Certified Drawing.....	10
Performance Summary.....	12
Certified Drawing.....	15

Performance Summary For 20 Ton CU

Project: Highland Beach Library
Prepared By: Tom Griswold

10/08/2024
07:29PM

System:..... **38AUZ 025**
No. of Circuits:..... **Single Circuit**
System Quantity:..... **1**
Altitude:..... **0.0** ft
EER @ ARI Conditions:..... **11.0**
IEER:..... **13.6**
Suction Line Loss:..... **1.4** °F
 Condensing unit is rated in accordance with ARI 365.

Typical Liquid and Suction Line Sizing

Pipe Length	Liquid Line Size	Suction Line Size
0 - 25	5/8	1 3/8
26 - 50	5/8	1 3/8
51 - 75	5/8	1 5/8
76 - 100	5/8	1 5/8
101 - 125	3/4	1 5/8
126 - 150	3/4	2 1/8
151 - 175	3/4	2 1/8
176 - 200	3/4	2 1/8

Refer to the 38AU installation instructions for installation specific line sizing guidance

Outdoor Unit Parameters

Unit Quantity:..... **1**
 PartNumber:..... **38AUZA25A0B6-0A0A0**
 Unit Model:..... **38AUZ**
 Unit Size:..... **20 Tons**
 Condenser Coil:..... **Pre Coated Al/Cu**
 Voltage:..... **460-3-60** V-Ph-Hz
 Total Clg Cap.(Gross):..... **233.3** MBH
 SDT:..... **118.7** °F
 Clg Ent Air DB:..... **95.0** °F
 Saturated Suction Temp:..... **45.0** °F

Outdoor Electrical Data

Unit Voltage:..... **460-3-60** V-Ph-Hz
 Unit MCA:..... **40.8** Amps
 Unit MOCP:..... **50.0** Amps
 Total Compressor Power of Unit:..... **16.90** kW
 Voltage Range Min:..... **414** V
 Voltage Range Max:..... **506** V
 Compressor RLA:..... **16.7/16.7**
 Compressor LRA:..... **114/114**
 Compressor Quantity:..... **2**
 Fan Motors Qty:..... **4**
 Fan Motor FLA:..... **0.8** Amps

Notice: Outdoor unit elect. data is based on 460-3-60
 Control Panel SCCR: 5kA RMS at Rated Symmetrical Voltage

Control Panel SCCR: 5kA RMS at Rated Symmetrical Voltage

Acoustics

Sound Power Levels, db re 10E-12 Watts

A-Weighted	Outdoor Unit (dB)	Indoor Unit (dB,Ducted)
Total Level	85.2	NA
63Hz	64.8	NA

Performance Summary For 20 Ton CU

Project: Highland Beach Library
Prepared By: Tom Griswold

10/08/2024
07:29PM

125Hz	68.9	NA
250Hz	71.4	NA
500Hz	82.8	NA
1000Hz	79.0	NA
2000Hz	74.2	NA
4000Hz	69.0	NA
8000Hz	61.9	NA
Sound Message	Sound for AUZ_25	

Acoustic Notes:

1. 38AUZ/D/Q units sound ratings are in accordance with AHRI 270-2008 - Sound Rating of Outdoor Unitary Equipment.
2. The acoustic center of the unit is located at the geometric center of the unit.

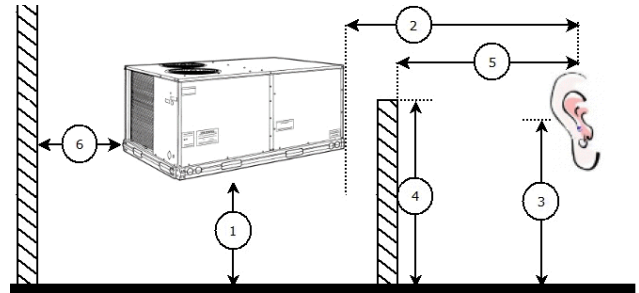
Performance Summary For 20 Ton CU

Project: Highland Beach Library
Prepared By: Tom Griswold

10/08/2024
07:29PM

Advanced Acoustics Parameters

1. Unit height above ground:..... **1.0** ft
2. Horizontal distance from unit to receiver:..... **20.0** ft
3. Receiver height above ground:..... **5.7** ft
4. Height of obstruction:..... **0.0** ft
5. Horizontal dist. from obstruction to receiver:..... **0.0** ft
6. Horizontal dist. from unit to obstruction:..... **0.0** ft



Detailed Acoustics Information

Octave Band Center Frequency, Hz	63	125	250	500	1k	2k	4k	8k	Overall
Sound Power Levels at Unit's Acoustic Center (Lw), dB	91	85	80	86	79	73	68	63	93
A-Wgtd Sound Power Levels at Unit's Acoustic Center (LwA), dBA	65	69	71	83	79	74	69	62	85
Sound Press. Levels at Dist. Specified above (Lp), dB	66	60	55	61	54	48	43	38	69
A-Wgtd Sound Press. Levels at Dist. Specified above (LpA), dBA	40	44	47	58	54	50	44	37	61

Calculation methods used in this program are patterned after the ASHRAE Guide; other ASHRAE Publications and the AHRI Acoustical Standards. While a very significant effort has been made to insure the technical accuracy of this program, it is assumed that the user is knowledgeable in the art of system sound estimation and is aware of the tolerances involved in real world acoustical estimation. This program makes certain assumptions as to the dominant sound sources and sound paths which may not always be appropriate to the real system being estimated. Because of this, no assurances can be offered that this software will always generate an accurate sound prediction from user supplied input data. If in doubt about the estimation of expected sound levels in a space, an Acoustical Engineer or a person with sound prediction expertise should be consulted.

Certified Drawing for 20 Ton CU

Project: Highland Beach Library
Prepared By: Tom Griswold

10/08/2024
07:29PM

UNIT	ELECTRICAL CHARACTERISTICS	STD. UNIT WT.		CORNER A		CORNER B		CORNER C		CORNER D		CENTER OF GRAVITY			UNIT HEIGHT
		LBS.	KG.	LBS.	KG.	LBS.	KG.	LBS.	KG.	LBS.	KG.	X	Y	Z	
38AUZ25 (RTPF)	208/230-3-60, 460-3-60, 575-3-60	978	444	360	163	188	85	147	67	203	128	38 (965.2)	23 (584.2)	17 (431.8)	50-3/8 (1279.2)
38AUD25 (RTPF)	208/230-3-60, 460-3-60, 575-3-60	978	444	360	163	188	85	147	67	203	128	38 (965.2)	23 (584.2)	17 (431.8)	50-3/8 (1279.2)
38AUD28 (RTPF)	208/230-3-60, 460-3-60, 575-3-60	978	444	327	148	210	95	173	78	269	122	39 (990.6)	26.25 (666.8)	17 (431.8)	50-3/8 (1279.2)



THIS DOCUMENT IS THE PROPERTY OF CARRIER CORPORATION AND IS DELIVERED UPON THE EXPRESS CONDITION THAT THE CONTENTS WILL NOT BE DISCLOSED OR USED WITHOUT CARRIER CORPORATION'S WRITTEN CONSENT.

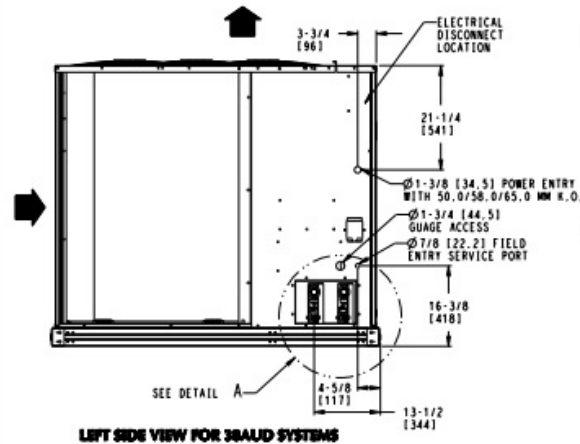
SUBMISSION OF THESE DRAWINGS OR DOCUMENTS DOES NOT CONSTITUTE PART PERFORMANCE OR ACCEPTANCE OF CONTRACT.

NOTES:

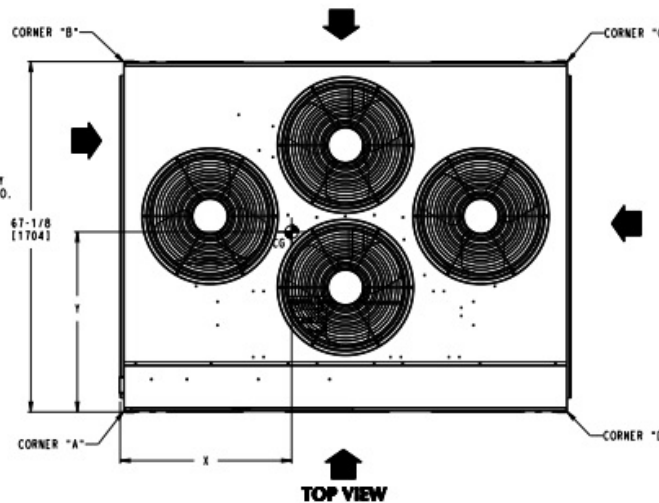
- MINIMUM CLEARANCE (LOCAL CODES OR JURISDICTION MAY PREVAIL):
 - BOTTOM TO COMBUSTIBLE SURFACES: 0 INCHES.
 - OUTDOOR COIL, FOR PROPER AIR FLOW: 36 INCHES ONE SIDE, 12 INCHES THE OTHER, THE SIDE GETTING THE GREATER CLEARANCE IS OPTIONAL.
 - OVERHEAD: 60 INCHES, TO ASSURE PROPER OUTDOOR FAN OPERATION.
 - BETWEEN UNITS: CONTROL BOX SIDE, 42 INCHES PER NEC.
 - BETWEEN UNIT AND UNGROUNDED SURFACES: CONTROL BOX SIDE, 36 INCHES PER NEC.
 - BETWEEN UNIT AND BLOCK OR CONCRETE WALLS AND OTHER GROUNDED SURFACES: CONTROL BOX SIDE, 42 INCHES PER NEC.
- WITH EXCEPTION OF THE CLEARANCE FOR THE OUTDOOR COIL AS STATED IN NOTE 1B, A REMOVABLE FENCE OR BARRICADE REQUIRES NO CLEARANCE.
- UNITS MAY BE INSTALLED ON COMBUSTIBLE FLOORS MADE FROM WOOD OR CLASS A, B OR C ROOF COVERING MATERIAL.

SERVICE VALVE CONNECTIONS			
UNIT	SUCTION	LIQUID	QTY
38AUZ25	1-5/8 (41.3)	5/8 (15.9)	1 EA
38AUD25	1-3/8 (34.9)	1/2 (12.7)	2 EA

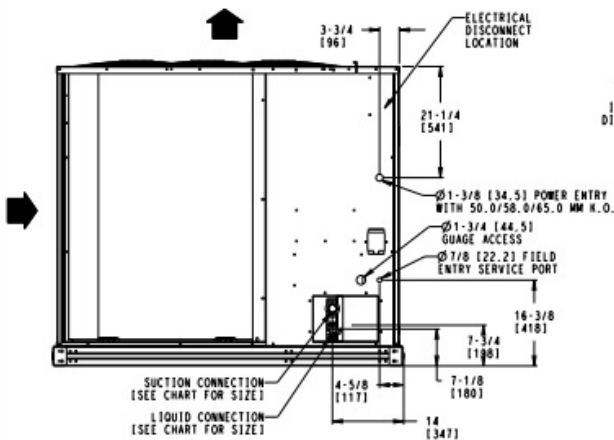
CENTER OF GRAVITY
 DIRECTION OF AIR FLOW
 DIMENSIONS IN 1 1 ARE IN MM



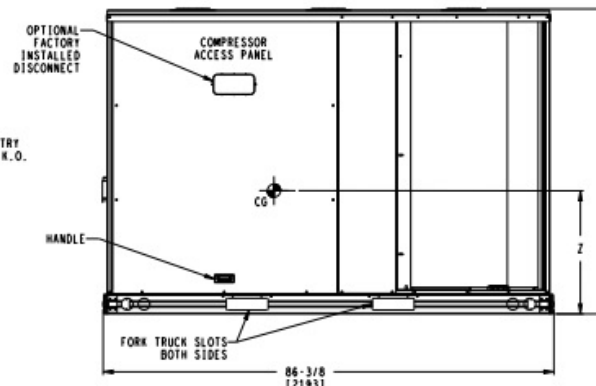
LEFT SIDE VIEW FOR 38AUD SYSTEMS



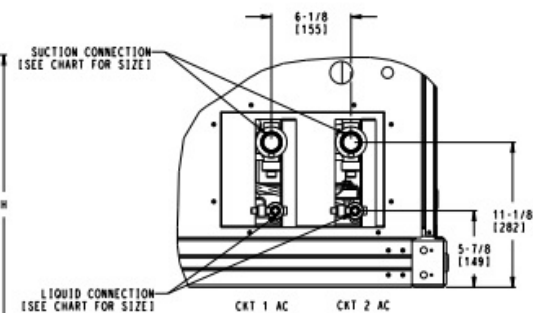
TOP VIEW



LEFT SIDE VIEW



FRONT VIEW



DETAIL A
(NOTE POSITION OF CKT 1)

DATE	SUPERCEDES	38AUZ , 38AUD CONDENSING UNIT	38AU500370	F
9/1/22	11/17/10			

Performance Summary For 10 Ton CU

Project: Highland Beach Library
Prepared By: Tom Griswold

10/08/2024
07:29PM

System:..... **38AUZ_012**
No. of Circuits:..... **Single Circuit**
System Quantity:..... **1**
Altitude:..... **0.0** ft
EER @ ARI Conditions:..... **11.2**
IEER:..... **15.5**
Suction Line Loss:..... **1.4** °F

Typical Liquid and Suction Line Sizing

Pipe Length	Liquid Line Size	Suction Line Size
0 - 25	1/2	7/8
26 - 50	5/8	1 1/8
51 - 75	5/8	1 1/8
76 - 100	5/8	1 3/8
101 - 125	5/8	1 3/8
126 - 150	5/8	1 3/8
151 - 175	5/8	1 3/8
176 - 200	5/8	1 3/8

Refer to the 38AU installation instructions for installation specific line sizing guidance

Outdoor Unit Parameters

Unit Quantity:..... **1**
 PartNumber:..... **38AUZM12A0B6-0A0A0**
 Unit Model:..... **38AUZ**
 Unit Size:..... **10 Tons**
 Condenser Coil:..... **Pre Coated Al/Cu**
 Voltage:..... **460-3-60** V-Ph-Hz
 Total Clg Cap.(Gross):..... **113.8** MBH
 SDT:..... **124.6** °F
 Clg Ent Air DB:..... **95.0** °F
 Saturated Suction Temp:..... **45.0** °F

Outdoor Electrical Data

Unit Voltage:..... **460-3-60** V-Ph-Hz
 Unit MCA:..... **21.0** Amps
 Unit MOCP:..... **30.0** Amps
 Total Compressor Power of Unit:..... **8.90** kW
 Voltage Range Min:..... **414** V
 Voltage Range Max:..... **506** V
 Compressor RLA:..... **15.1**
 Compressor LRA:..... **130**
 Compressor Quantity:..... **1**
 Fan Motors Qty:..... **2**
 Fan Motor FLA:..... **0.8** Amps

Notice: Outdoor unit elect. data is based on 460-3-60

Control Panel SCCR: 5kA RMS at Rated Symmetrical Voltage

Control Panel SCCR: 5kA RMS at Rated Symmetrical Voltage

Acoustics

Sound Power Levels, db re 10E-12 Watts

A-Weighted	Outdoor Unit (dB)	Indoor Unit (dB,Ducted)
Total Level	81.7	NA
63Hz	34.2	NA
125Hz	49.7	NA

Performance Summary For 10 Ton CU

Project: Highland Beach Library
Prepared By: Tom Griswold

10/08/2024
07:29PM

250Hz	68.5	NA
500Hz	73.6	NA
1000Hz	77.1	NA
2000Hz	77.0	NA
4000Hz	71.2	NA
8000Hz	63.6	NA
Sound Message	Sound for AUZ_12	

Acoustic Notes:

1. 38AUZ/D/Q units sound ratings are in accordance with AHRI 270-2008 - Sound Rating of Outdoor Unitary Equipment.
2. The acoustic center of the unit is located at the geometric center of the unit.

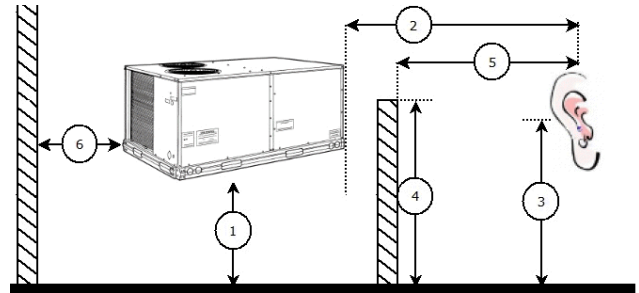
Performance Summary For 10 Ton CU

Project: Highland Beach Library
Prepared By: Tom Griswold

10/08/2024
07:29PM

Advanced Acoustics Parameters

1. Unit height above ground:..... **1.0** ft
2. Horizontal distance from unit to receiver:..... **20.0** ft
3. Receiver height above ground:..... **5.7** ft
4. Height of obstruction:..... **0.0** ft
5. Horizontal dist. from obstruction to receiver:..... **0.0** ft
6. Horizontal dist. from unit to obstruction:..... **0.0** ft



Detailed Acoustics Information

Octave Band Center Frequency, Hz	31	63	125	250	500	1k	2k	4k	8k	Overall
Sound Power Levels at Unit's Acoustic Center (Lw), dB	83	60	66	77	77	77	76	70	65	86
A-Wgtd Sound Power Levels at Unit's Acoustic Center (LwA), dBA	44	34	50	69	74	77	77	71	64	82
Sound Press. Levels at Dist. Specified above (Lp), dB	59	36	41	53	52	53	51	46	40	62
A-Wgtd Sound Press. Levels at Dist. Specified above (LpA), dBA	19	10	25	44	49	53	53	47	39	57

Calculation methods used in this program are patterned after the ASHRAE Guide; other ASHRAE Publications and the AHRI Acoustical Standards. While a very significant effort has been made to insure the technical accuracy of this program, it is assumed that the user is knowledgeable in the art of system sound estimation and is aware of the tolerances involved in real world acoustical estimation. This program makes certain assumptions as to the dominant sound sources and sound paths which may not always be appropriate to the real system being estimated. Because of this, no assurances can be offered that this software will always generate an accurate sound prediction from user supplied input data. If in doubt about the estimation of expected sound levels in a space, an Acoustical Engineer or a person with sound prediction expertise should be consulted.

Certified Drawing for 10 Ton CU

Project: Highland Beach Library
Prepared By: Tom Griswold

10/08/2024
07:29PM



THIS DOCUMENT IS THE PROPERTY OF CARRIER CORPORATION AND IS DELIVERED UPON THE EXPRESS CONDITION THAT THE CONTENTS WILL NOT BE DISCLOSED OR USED WITHOUT CARRIER CORPORATION'S WRITTEN CONSENT.

SUBMISSION OF THESE DRAWINGS OR DOCUMENTS DOES NOT CONSTITUTE PART PERFORMANCE OR ACCEPTANCE OF CONTRACT.

UNIT	ELECTRICAL CHARACTERISTICS	STD. UNIT WT.		CORNER A		CORNER B		CORNER C		CORNER D		CENTER OF GRAVITY			UNIT HEIGHT
		LBS.	KG.	LBS.	KG.	LBS.	KG.	LBS.	KG.	LBS.	KG.	X	Y	Z	
38AUZ-07 (RTPF)	208/230-3-60,460-3-60,575-3-60	389	176	141	64	96	44	62	28	91	41	18 (457.2)	24 (609.6)	21 (533.4)	42-3/8 (1076.0)
38AUZ1A,B108 (RTPF)	208/230-3-60,460-3-60,575-3-60	391	177	142	64	96	44	62	28	91	41	18 (457.2)	24 (609.6)	21 (533.4)	42-3/8 (1076.0)
38AUZ1D,E108 (RTPF)	208/230-3-60,460-3-60,575-3-60	430	195	142	64	96	44	76	34	111	50	18 (457.2)	24 (609.6)	21 (533.4)	42-3/8 (1076.0)
38AUZ-12 (RTPF)	208/230-3-60,460-3-60,575-3-60	490	222	177	80	120	54	78	35	114	52	18 (457.2)	24 (609.6)	24 (609.6)	50-3/8 (1279.2)
38AUZ-14 (RTPF)	208/230-3-60,460-3-60,575-3-60	598	271	195	88	142	64	110	50	151	68	20 (508.0)	25 (635.0)	24 (609.6)	50-3/8 (1279.2)
38AUD-12 (RTPF)	208/230-3-60,460-3-60,575-3-60	516	234	185	84	117	53	83	38	131	59	19 (482.6)	23 (584.2)	24 (609.6)	50-3/8 (1279.2)
38AUD-14 (RTPF)	208/230-3-60,460-3-60,575-3-60	654	297	214	97	155	70	120	54	165	75	20 (508.0)	25 (635.0)	24 (609.6)	50-3/8 (1279.2)
38AUO-07	208/230-3-60,460-3-60,575-3-60	444	201	134	61	97	44	90	41	123	56	22 (558.8)	25 (635.0)	13 (330.2)	42-3/8 (1076.0)
38AUO1A,B108	208/230-3-60,460-3-60,575-3-60	483	219	162	74	110	50	85	39	125	57	20 (508.0)	24 (609.6)	21 (533.4)	42-3/8 (1076.0)
38AUO1D,E108	208/230-3-60,460-3-60,575-3-60	523	237	174	79	118	54	96	44	135	61	21 (533.4)	24 (609.6)	23 (584.2)	50-3/8 (1279.2)
38AUO-12	208/230-3-60,460-3-60,575-3-60	575	261	186	84	126	57	106	48	157	71	21 (533.4)	24 (609.6)	23 (584.2)	50-3/8 (1279.2)

NOTES:

- MINIMUM CLEARANCE (LOCAL CODES OR JURISDICTION MAY PREVAIL):
 - BOTTOM TO COMBUSTIBLE SURFACES: 0 INCHES.
 - OUTDOOR COIL, FOR PROPER AIR FLOW: 36 INCHES ONE SIDE, 12 INCHES THE OTHER. THE SIDE GETTING THE GREATER CLEARANCE IS OPTIONAL. STANDARD CLEARANCES ON REMAINING TWO SIDES.
 - OVERHEAD: 60 INCHES, TO ASSURE PROPER OUTDOOR FAN OPERATION.
 - BETWEEN UNITS: CONTROL BOX SIDE, 42 INCHES PER NEC.
 - BETWEEN UNIT AND UNGROUNDED SURFACES: CONTROL BOX SIDE, 36 INCHES PER NEC.
 - BETWEEN UNIT AND BLOCK OR CONCRETE WALLS AND OTHER GROUNDED SURFACES: CONTROL BOX SIDE, 42 INCHES PER NEC.
- WITH EXCEPTION OF THE CLEARANCE FOR THE OUTDOOR COIL AS STATED IN NOTE 1B, A REMOVABLE FENCE OR BARRICADE REQUIRES NO CLEARANCE.
- UNITS MAY BE INSTALLED ON COMBUSTIBLE FLOORS MADE FROM WOOD OR CLASS A, B OR C ROOF COVERING MATERIAL.

ITC CLASSIFICATION	SHEET	DATE	SUPERCEDES	CONDENSING UNIT	38AUZ/ 38AUD/ 38AUO-07/08/12/14	REV
U.S. ECCN:NSR	1 OF 2	06/29/21	05/08/19		38AU500349	J

Certified Drawing for 10 Ton CU

Project: Highland Beach Library
Prepared By: Tom Griswold

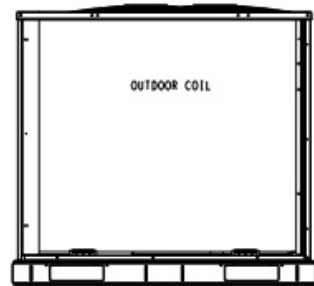
10/08/2024
07:29PM



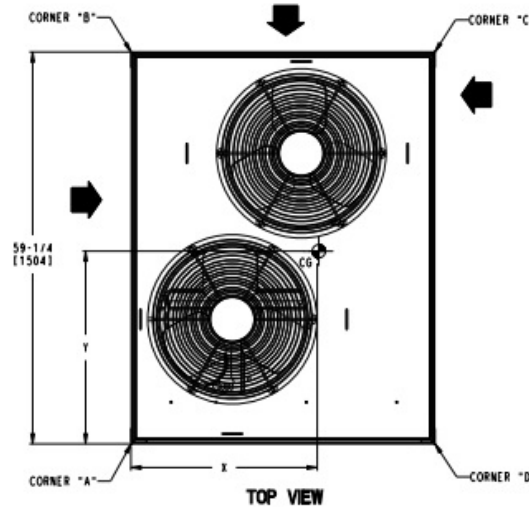
THIS DOCUMENT IS THE PROPERTY OF CARRIER CORPORATION AND IS DELIVERED UPON THE EXPRESS CONDITION THAT THE CONTENTS WILL NOT BE DISCLOSED OR USED WITHOUT CARRIER CORPORATION'S WRITTEN CONSENT.

SUBMISSION OF THESE DRAWINGS OR DOCUMENTS DOES NOT CONSTITUTE PART PERFORMANCE OR ACCEPTANCE OF CONTRACT.

CG CENTER OF GRAVITY
DIRECTION OF AIR FLOW
DIMENSIONS IN () ARE IN MM

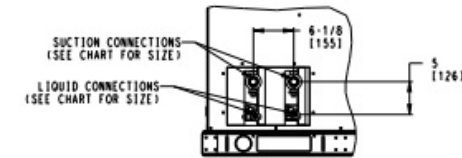


REAR VIEW

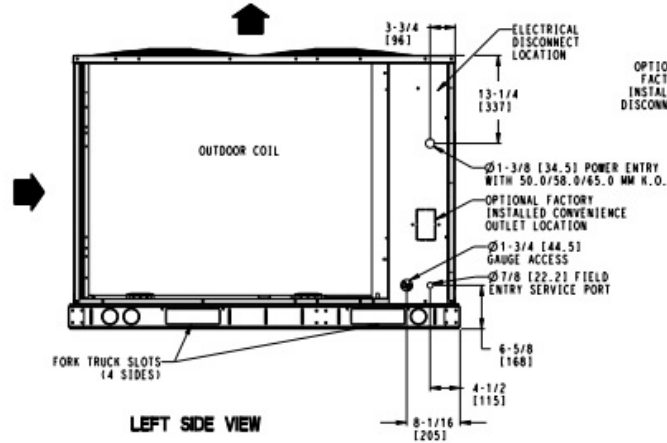


TOP VIEW

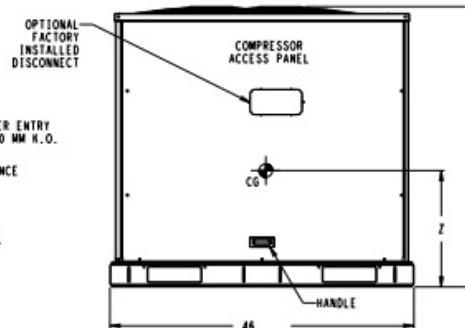
SERVICE VALVE CONNECTIONS				
UNIT	SUCTION	LIQUID	QTY	
38AUZ07	1-1/8 (28.6)	3/8 (9.5)	1	
38AUZ08	1-1/8 (28.6)	1/2 (12.7)	1	
38AUZ12	1-3/8 (34.9)	1/2 (12.7)	1	
38AUZ14	1-3/8 (34.9)	5/8 (15.9)	1	
38AUD12	1-1/8 (28.6)	3/8 (9.5)	2	
38AUD14	1-3/8 (34.9)	1/2 (12.7)	2	
38AU007	1-1/8 (28.6)	3/8 (9.5)	1	
38AU008	1-1/8 (28.6)	1/2 (12.7)	1	
38AU012	1-3/8 (34.9)	1/2 (12.7)	1	



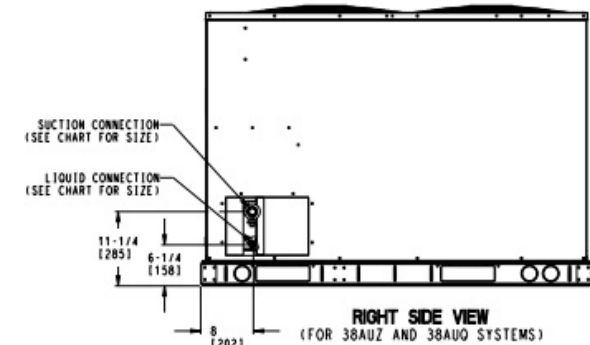
RIGHT SIDE VIEW
(FOR 38AUD SYSTEMS)



LEFT SIDE VIEW



FRONT VIEW



RIGHT SIDE VIEW
(FOR 38AUZ AND 38AU SYSTEMS)

ITC CLASSIFICATION	SHEET	DATE	SUPERCEDES	CONDENSING UNIT	REV
U.S. ECCN: NSR	2 OF 2	06/29/21	05/08/19	38AUZ/ 38AUD/ 38AU-07/08/12/14	J

Performance Summary For 25 Ton AHU

Project: Highland Beach Library
Prepared By: Tom Griswold

10/08/2024
07:29PM

System: 40RUA028
No. of Circuits: Dual Circuit
System Quantity: 1
Altitude: 0.0 ft

Control Panel SCCR: 5kA RMS at Rated Symmetrical Voltage

Indoor Unit Parameters

PartNumber: 40RUAA28T2A6-UA0A0
Unit Model: 40RUA
Unit Size: 25 Tons
Coil Rows: 4
No. of Splits: 2
Voltage: 460-3-60 V-Ph-Hz
Indoor Unit External Static: 1.00 in wg
Actual Airflow: 10000.0 CFM
Standard Airflow: 10000.0 CFM
Total Clg Cap.(Gross): 295.0 MBH
Sensible Clg Cap.(Gross): 221.0 MBH
Ent Air DB: 80.0 °F
Ent Air WB: 67.0 °F
Lvg Air DB: 59.5 °F
Lvg Air WB: 57.8 °F
Saturated Suction Temp: 45.0 °F

Accessory Heating

Heating Type: Electric
Acc Htg Capacity: 62.67 MBH
Acc Htg Ent. Air Temp: 60.0 °F
Acc Htg Lvg. Air Temp: 65.8 °F
Acc Heater Nominal Voltage: 480-3-60
Acc Heater Nominal kW: 20.0 kW
Acc Heater Actual Voltage: 460-3-60
Acc Heater FLA: 23.1 amps
Acc Stage 1 Actual kW: 18.4 kW

Indoor Supply Fan

Indoor Unit External Static: 1.00 in wg
Economizer Loss: 0.00 in wg
Grille Loss: 0.00 in wg
Plenum Loss: 0.00 in wg
Acc. Heating Loss: 0.16 in wg
Total Ext Static: 1.16 in wg
Fan Speed: 879 RPM
Fan Power: 5.94 BHP
Fan Motor Max: 10.00 BHP
Fan Motor FLA: 16.0 Amps
Alternate Motor and Medium Static Drive Required.
Selected Medium Static Drive Range: 798 - 984 RPM

Indoor Electrical Data

Unit Voltage: 460-3-60 V-Ph-Hz
Unit MCA: 50.1 Amps
Unit MOCP: 60.0 Amps
Notice: Indoor unit elect. data is based on 460-3-60

Acoustics

Sound Power Levels, db re 10E-12 Watts

Performance Summary For 25 Ton AHU

Project: Highland Beach Library
Prepared By: Tom Griswold

10/08/2024
07:29PM

A-Weighted	Outdoor Unit (dB)	Indoor Unit (dB,Ducted)
Total Level	NA	96.3
63Hz	NA	76.3
125Hz	NA	82.4
250Hz	NA	85.9
500Hz	NA	92.3
1000Hz	NA	89.5
2000Hz	NA	88.7
4000Hz	NA	84.5
8000Hz	NA	NA
Sound Message	Sound for RUA_28	

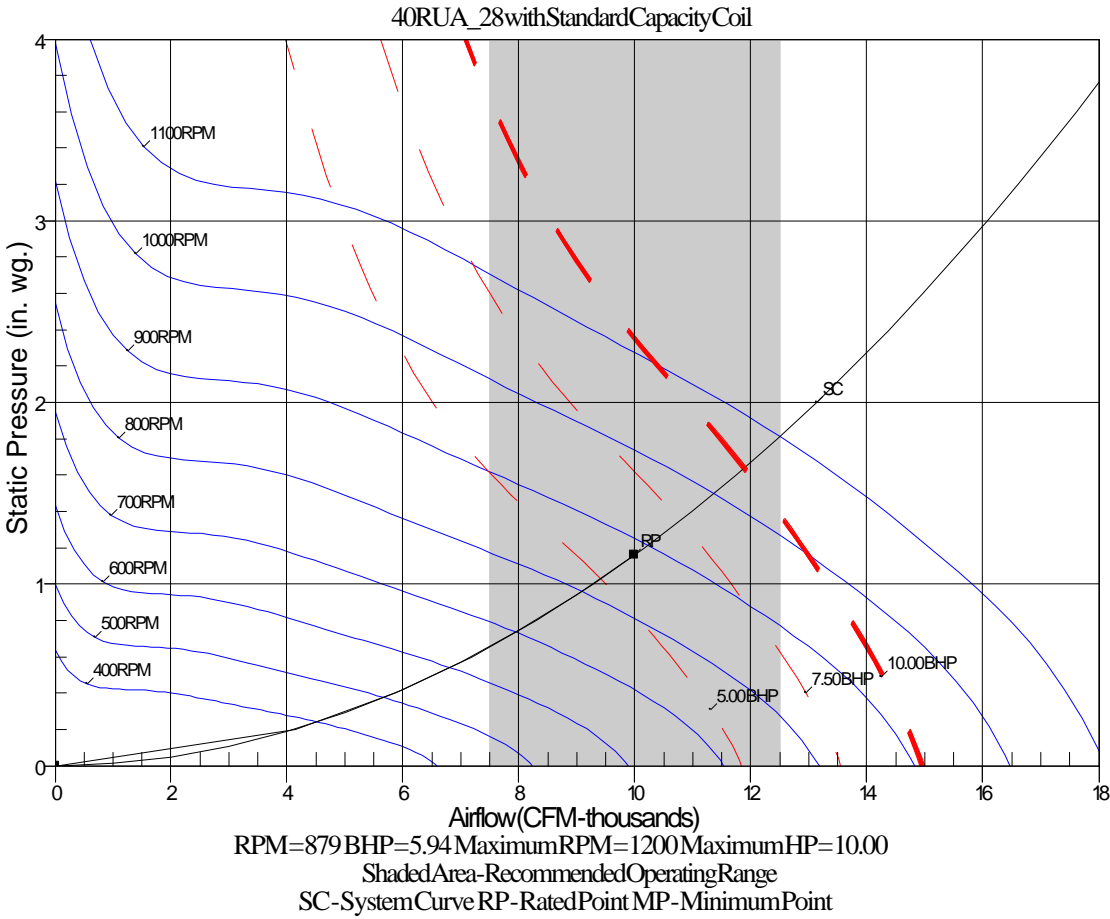
Acoustic Notes:

1. 40RF/40RU units sound ratings are in accordance with AHSRAE 1987 HVAC Systems and Applications handbook.
2. The acoustic center of the unit is located at the geometric center of the unit.

Performance Summary For 25 Ton AHU

Project: Highland Beach Library
Prepared By: Tom Griswold

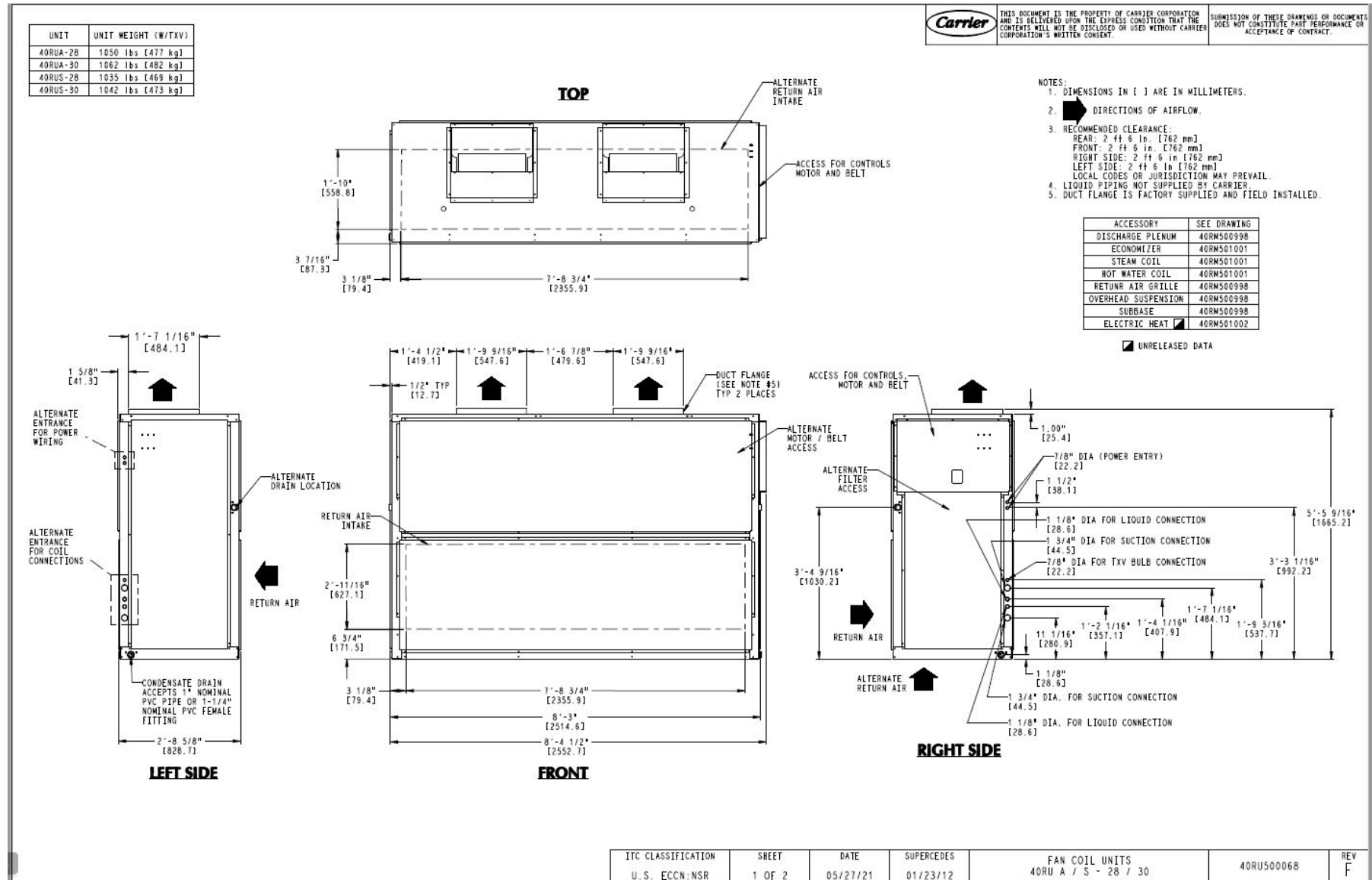
10/08/2024
07:29PM



Certified Drawing for 25 Ton AHU

Project: Highland Beach Library
Prepared By: Tom Griswold

10/08/2024
07:29PM

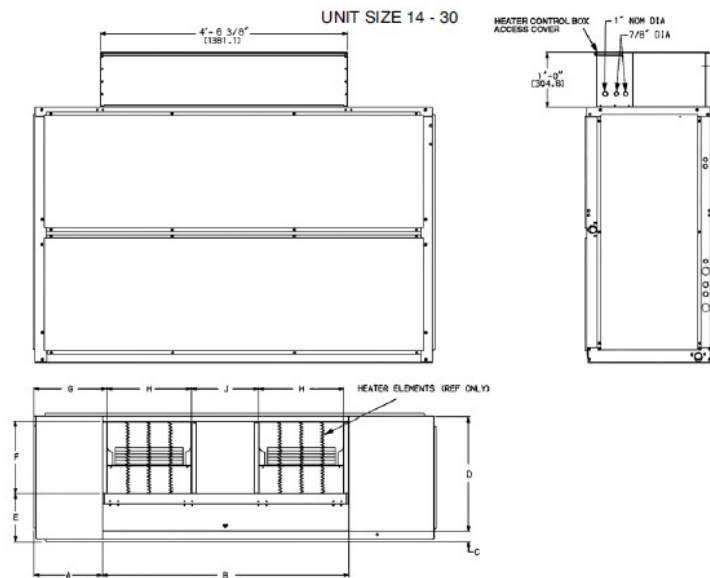
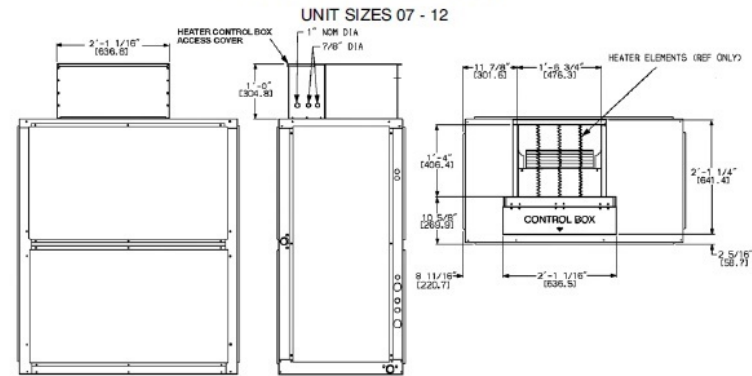


Certified Drawing for 25 Ton AHU

Project: Highland Beach Library
Prepared By: Tom Griswold

10/08/2024
07:29PM

ELECTRIC HEAT ACCESSORY



C160006

40RU UNIT SIZE	A	B	C	D	E	F	G	H	J
14 - 25	1'-3 1/4" [387.4]	4'-6 3/8" [1381.1]	2'-1 1/4" [508.0]	2'-1 1/4" [508.0]	10 5/8" [269.9]	1'-4" [406.4]	1'-4 5/16" [414.3]	1'-6 3/4" [476.3]	1'-7/8" [327.0]
28, 30	1'-3 3/8" [390.5]	5'-4 7/8" [1636.8]	2'-1 1/4" [508.0]	2'-6 3/8" [766.8]	1'-1 1/4" [311.2]	1'-7" [482.6]	1'-4 5/16" [414.3]	1'-10" [558.8]	1'-4 7/16" [417.1]

NOTE: Dimensions in [] are millimeters.