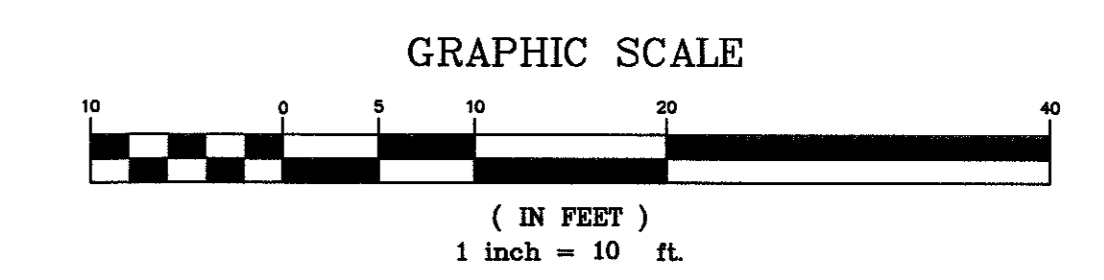
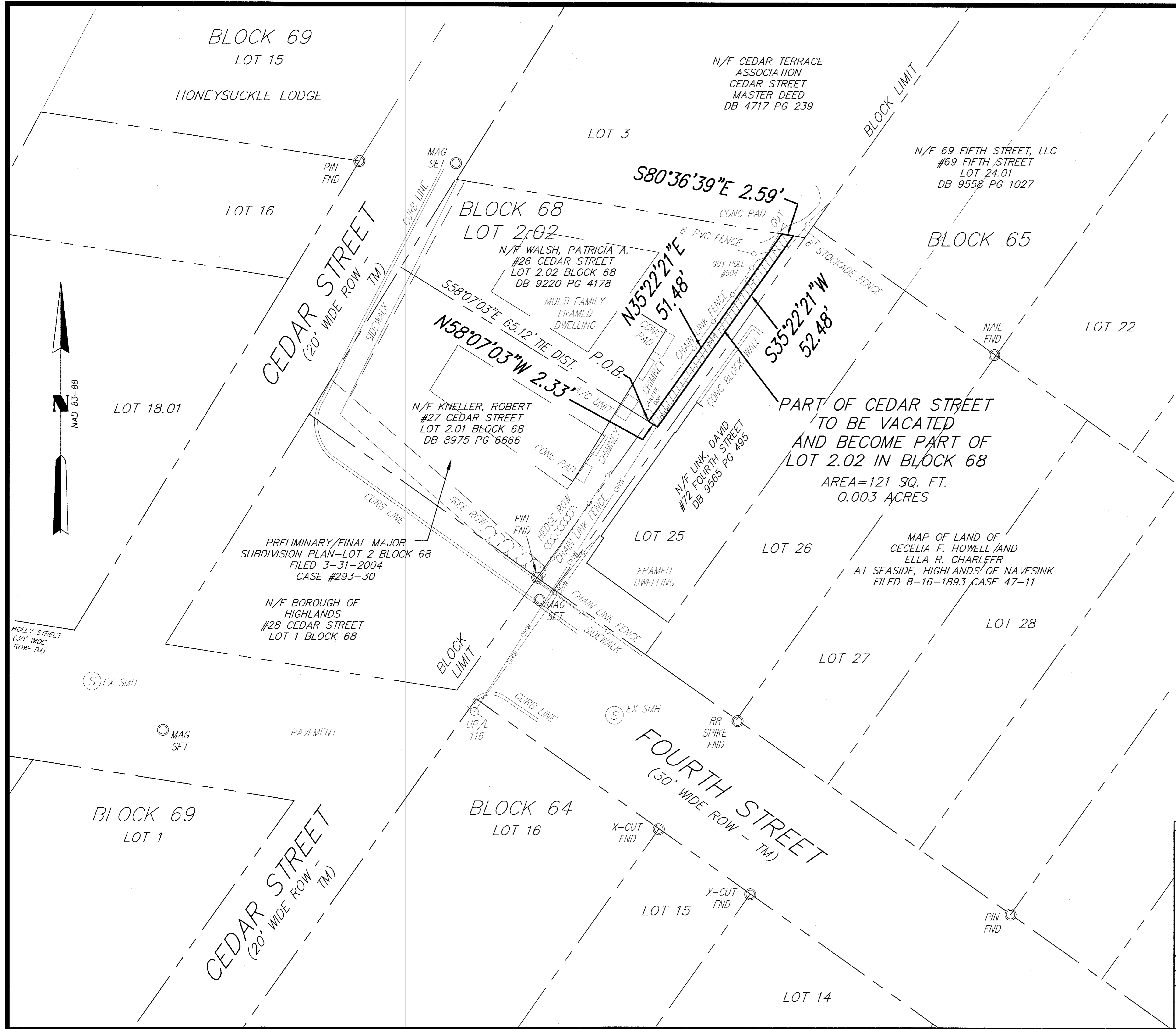


SURVEY DATA PORTRAYED HEREON IS BASED UPON FIELD OBSERVATIONS COLLECTED IN FEBRUARY OF 2022.  
 SURVEY PERFORMED WITHOUT THE BENEFIT OF A TITLE REPORT. SUBJECT TO RESTRICTIONS OR EASEMENTS THAT AN ACCURATE TITLE SEARCH WOULD ENCLOSE.  
 PART OF CEDAR STREET ROAD VACATION CONTAINS 121 S.F. MORE OR LESS.

- THIS SURVEY IS SUBJECT TO THE FOLLOWING:
1. ANY EASEMENTS, DEDICATIONS, OR RESTRICTIONS BOTH RECORDED AND UNRECORDED.
  2. SUCH FACTS THAT A TRUE AND ACCURATE TITLE REPORT MAY REVEAL.
  3. UNLESS NOTED HEREON THE FOLLOWING ITEMS WERE NOT CONTRACTED FOR OR INCLUDED ON THIS SURVEY.
    - a. DELINEATION OF THE SHAPE AND/OR DECLARATION OF THE EXISTENCE OF TOXIC WASTES, SANITARY LANDFILLS, DUMPING GROUNDS, BURIED TANKS, UNDERGROUND LINES, WELLS, OR ANY UNDERGROUND UTILITIES NOT OPEN TO VIEW.
    - b. DELINEATION OF THE EXISTENCE OF WETLANDS AS SPECIFICALLY DEFINED BY THE U.S. ARMY CORPS OF ENGINEERS, NEW JERSEY D.E.P. AND THE U.S. DEPT. OF THE INTERIOR, NATIONAL WETLANDS INVENTORY AND/OR N.J.D.E.P.
  4. UNLESS OTHERWISE NOTED HEREON ALL LOTS ARE LISTED BY TAX MAP DESIGNATION.
  5. BOROUGH OF HIGHLANDS, MONMOUTH COUNTY TAX MAP SHEETS #14.
  7. BEARINGS BASED ON N.J.S.P.C.S. (NAD83).



NO.	DESCRIPTION OF REVISION	DATE	DRAWN	CHECKED
SKETCH OF <b>Part of Lot 2.02 Block 68</b> BOROUGH OF HIGHLANDS MONMOUTH COUNTY, NEW JERSEY				
 <b>CONSULTING AND MUNICIPAL ENGINEERS</b>				
JOHN H. ALLGAR P.E., P.P. N.J. P.E. NO. 20011	DAVID J. SAMUEL P.E., P.P. N.J. P.E. NO. 20028	JOHN J. STEFANI P.E., L.S. & P.P. N.J. P.E. NO. 20021		
JAY B. CORNELL P.E., P.P. N.J. P.E. NO. 20042	MICHAEL J. MCLELAND P.E., P.P. N.J. P.E. NO. 20048	GREGORY R. VALESI P.E., P.P. N.J. P.E. NO. 20048		
<b>ROBERT K. SANCHEZ, P.L.S.</b>  NEW JERSEY PROFESSIONAL LAND SURVEYOR			SCALE 1"=10'	DATE 6-21-22
			DESIGNED BY RKS	CHECKED BY RKS
			SHEET 6 of 6	1 OF 1

PROJECT: H1602-Vacation-L2.02  
 DRAWN BY: RKS  
 CHECKED BY: RKS  
 DATE: 6/21/22