

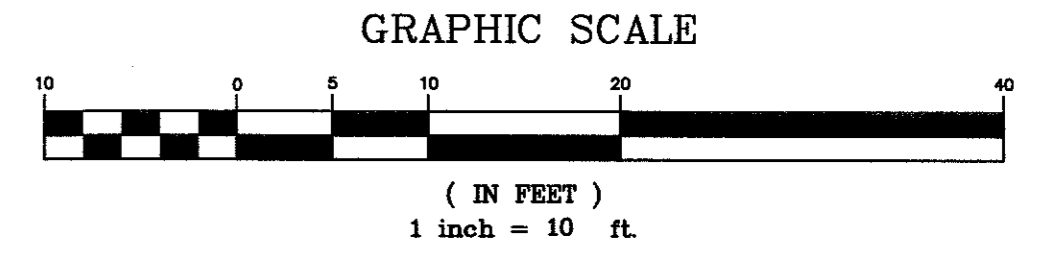
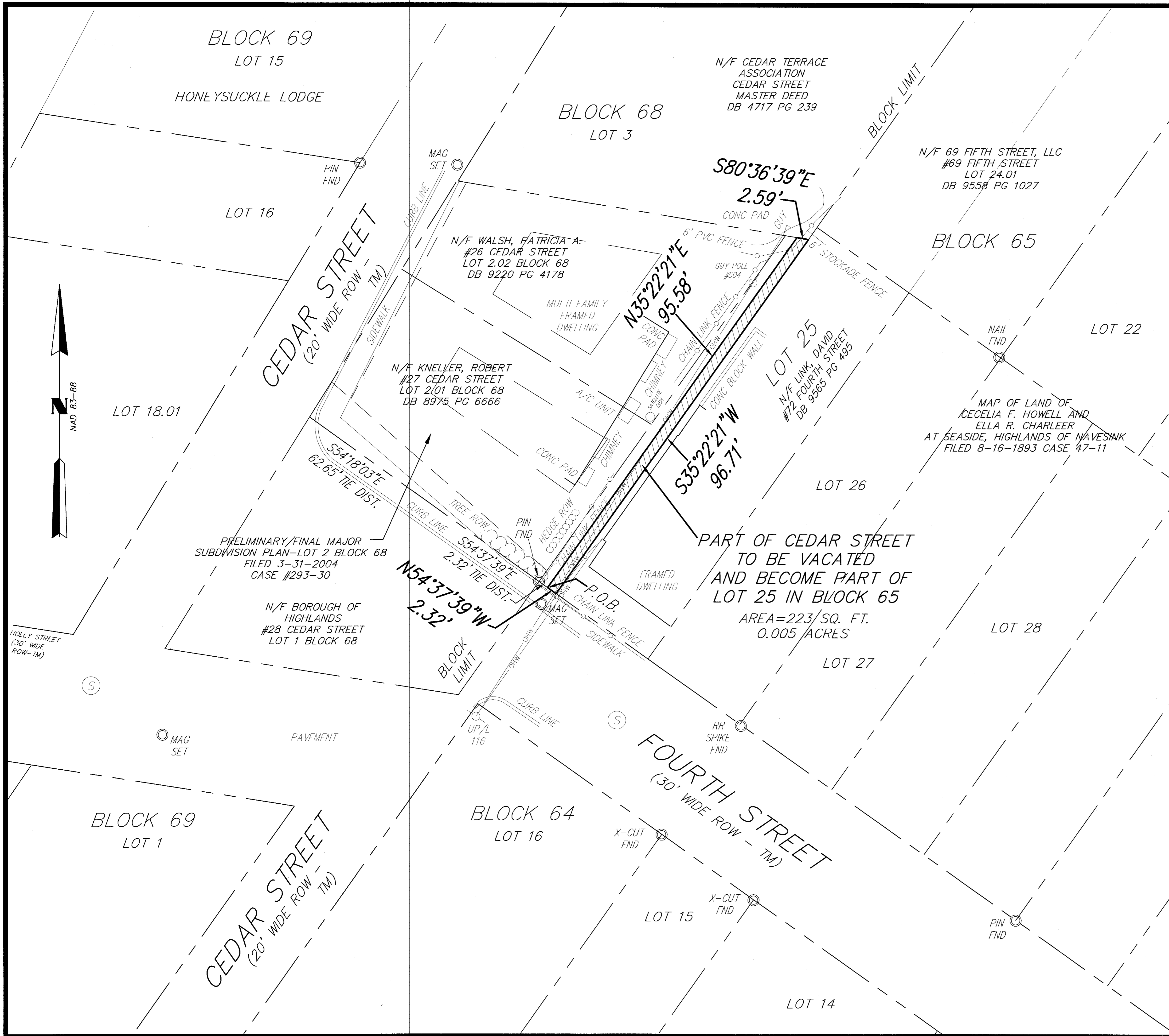
SURVEY DATA PORTRAYED HEREON IS BASED UPON FIELD OBSERVATIONS COLLECTED IN FEBRUARY OF 2022.

SURVEY PERFORMED WITHOUT THE BENEFIT OF A TITLE REPORT. SUBJECT TO RESTRICTIONS OR EASEMENTS THAT AN ACCURATE TITLE SEARCH WOULD ENCLOSE.

PART OF CEDAR STREET ROAD VACATION CONTAINS 223 S.F. MORE OR LESS.

THIS SURVEY IS SUBJECT TO THE FOLLOWING:

1. ANY EASEMENTS, DEDICATIONS, OR RESTRICTIONS BOTH RECORDED AND UNRECORDED.
2. SUCH FACTS THAT A TRUE AND ACCURATE TITLE REPORT MAY REVEAL.
3. UNLESS NOTED HEREON THE FOLLOWING ITEMS WERE NOT CONTRACTED FOR OR INCLUDED ON THIS SURVEY.
 - a. DELINEATION OF THE SHAPE AND/OR DECLARATION OF THE EXISTENCE OF TOXIC WASTES, SANITARY LANDFILLS, DUMPING GROUNDS, BURIED TANKS, UNDERGROUND LINES, WELLS, OR ANY UNDERGROUND UTILITIES NOT OPEN TO VIEW.
 - b. DELINEATION OF THE EXISTENCE OF WETLANDS AS SPECIFICALLY DEFINED BY THE U.S. ARMY CORPS OF ENGINEERS, NEW JERSEY D.E.P. AND THE U.S. DEPT. OF THE INTERIOR, NATIONAL WETLANDS INVENTORY AND/OR N.J.D.E.P.
4. UNLESS OTHERWISE NOTED HEREON ALL LOTS ARE LISTED BY TAX MAP DESIGNATION.
5. BOROUGH OF HIGHLANDS, MONMOUTH COUNTY TAX MAP SHEETS #14.
7. BEARINGS BASED ON N.J.S.P.C.S. (NAD83).



No.	DESCRIPTION OF REVISION	DATE	DRAWN	CHECKED
SKETCH OF CEDAR STREET ROAD VACATION Part of Lot 25 Block 65 BOROUGH OF HIGHLANDS MONMOUTH COUNTY, NEW JERSEY				
 CONSULTING AND MUNICIPAL ENGINEERS				
JOHN H. ALGAR P.E., P.P. NJ P.E. NO. 28881	DAVID J. SAMUEL P.E., P.P. NJ P.E. NO. 28888	JOHN J. STEFANI P.E., L.S. & P.P. NJ P.E. NO. 35277		
JAY B. CORNELL P.E., P.P. NJ P.E. NO. 32942	MICHAEL J. MCLELAND P.E., P.P. NJ P.E. NO. 32946	GREGORY R. VALES P.E., P.P. NJ P.E. NO. 34488		
ROBERT K. SANCHEZ P.L.S. NEW JERSEY PROFESSIONAL LAND SURVEYOR N.J. LIC. 43294			SCALE 1"=10'	DRAWN BY QTL
			DESIGNED BY RKS	CHECKED BY RKS
			DATE 6-21-22	SHEET 1 OF 1

H1602-Vacation-L25
 CedarStreetVacation

H1513