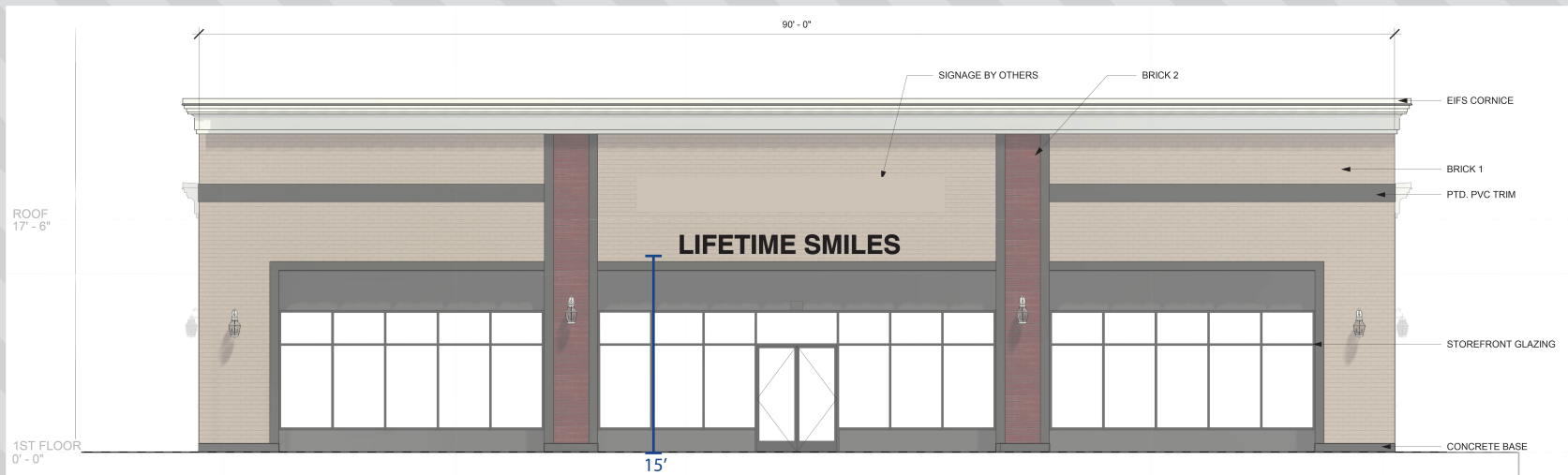


LIFETIME SMILES

199" x 18.1" Dimensional Letters (x1)
25 sqft



FASTSIGNS

Make Your Statement™

21240 Ashburn Crossing Drive, Suite 145, Ashburn, VA 20147

703-435-8807 263@fastsigns.com

Account: Lifetime Smiles

Client Rep: Sarah Drawn By: Gina

Folder/File:

LifetimeSmiles_Dim_8-8-24

SPECIAL NOTES / FONTS

COLOR(S)

■ BLACK

LOCATION:

XXXXXXXXXXXX
XXXXXXXXXXXX