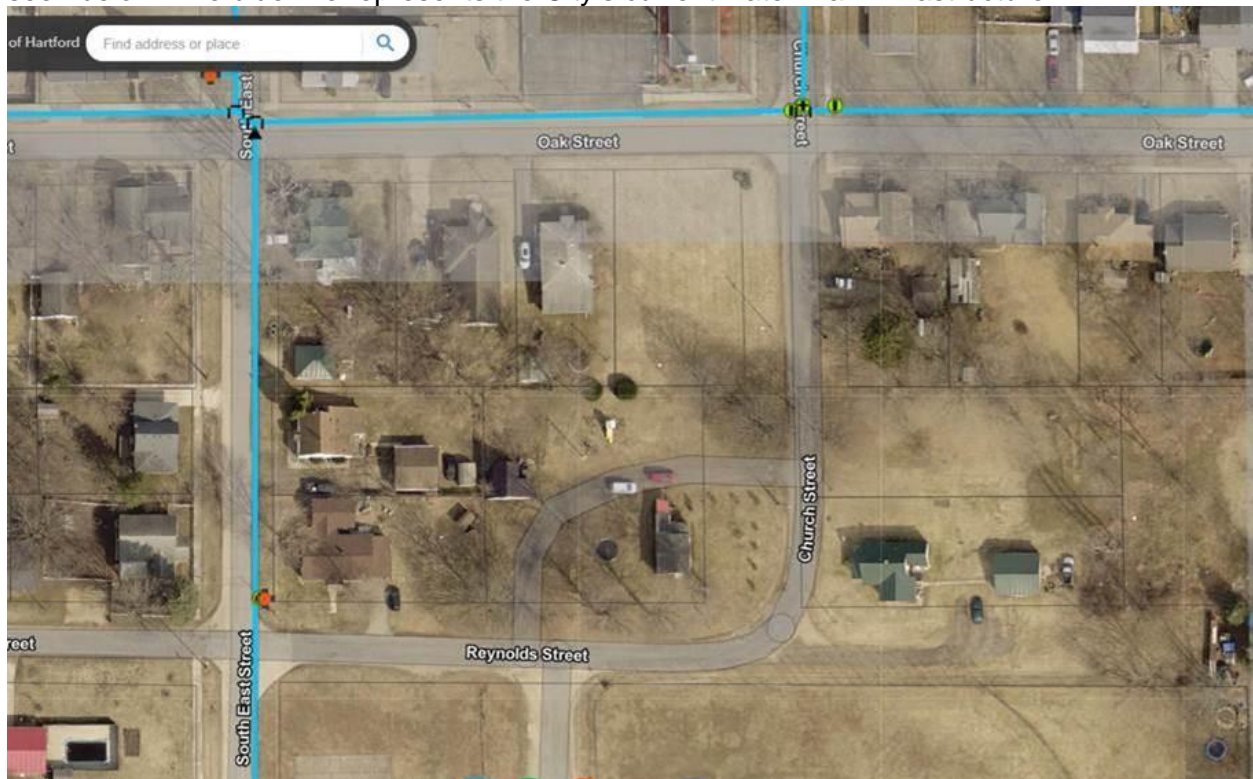


Memo

To: Mayor Hall
From: Sanya Vitale
cc: City Council
Date: July 11, 2023
Re: Voluntary Well Metering

A City of Hartford resident has requested information several times about connecting to the City's water system.

This resident lives on Church St. where the nearest available connection is over 350' away as seen below. The blue line represents the City's current water main infrastructure.



In seeking guidance from Wightman on the cost to extend a line to the resident's property. Due to the location of the resident's property, which is at the southwest corner of Church St. there would have to be a full loop. Wightman has provided the following guidance:

A quick (cost estimate) would be \$200k - \$250k. If we can keep the water main in the tree lawn, we will be closer to the \$200k figure, and possibly a little lower. If we need to remove a lane of pavement (due to separation from sanitary or storm sewer or other utility

conflicts (electric, gas or telephone)), then we would likely be near the \$250k or possibly more. Of course, the time of year that the project is bid can keep us in the lower range or put us at \$350k+.

While Wightman is seeking to include Church St. as part of our capital improvement plans, I also sought input from other municipalities about whether they had encountered similar situations.

Paw Paw, Milford, and Sandusky all responded that they allow for City metering of private wells to provide an invoice for the cost of sewer discharge just like they were on City's system.

The City may want to offer City of Hartford meters for private wells for customers dissatisfied with the flat rate sewer rates as a means of providing continuous quality customer service while seeking affordable alternatives. The rates would mirror rates currently approved by Council for metered customers (including 1.5x for Township residents that may want to apply for voluntary metering).