



July 2, 2025

Village of Harrison
W5298 State Road 114
Harrison, WI 54952

Subject: Invoice for Crossroads Business Park, Electric

Dear Village of Harrison:

Thank you for your application for electric facilities. Please review the following information.

Cost details:

- **The cost for this project will be \$60,803.91.** Additional charges may apply if we encounter unusual conditions, delays in your construction schedule or other changes that you request.
- The cost has been reduced by \$0.00 as credit for zero meter(s) being set at the time of installation.
- The cost includes \$4,356.00 of seasonal charges for installation from Dec. 1 through March 31. Site must be ready and signed grade verification form submitted by Nov. 1 to avoid seasonal charges.
- The cost does not include electric service to sewer lift stations, community well pumps, lighting, etc.
- Installation cost must be paid in advance of construction.
- If an additional cost estimate is needed within 12 months, there will be a charge for preparing the new estimate.
- **This cost is valid for 90 days provided this letter and enclosed drawing are signed and returned with payment, the site is ready, and all other requirements are met.**

Payment remittance:

Remit payment, if applicable, using one of the following options. Reference the work request number shown below on your check or when paying via phone or online.

- Personal check
- Online at www.we-energies.com/payconstructionbill
- Phone at 855-570-0998

Facility location:

- To avoid damage to underground facilities, you are responsible for locating and marking (with stakes, spray paint or flags) any buried obstructions and private underground facilities like lighting, septic systems, wells, sprinkler systems, etc.
- It is very important that you mark these facilities as We Energies and/or its agents are not responsible for damage to your facilities that are not properly marked before our work begins.

Construction:

Please consider this information when developing your project timeline:

- Once all job requirements are met, allow us a minimum three-week lead time for scheduling the installation of electric facilities.
- The area along the route of our facilities must be graded to within four inches of final grade. Fill, if deeper than three feet, must be compacted prior to the installation of our facilities. If relocation or

repair of our facilities becomes necessary because of a grade change greater than four inches, you will be billed the full relocation or repair costs.

- Easements to install and maintain all We Energies facilities, including the right to cut out brush, shrubs and trees must be provided.
- Lot corner pipes are required to be clearly and visibly marked and must be identifiable along the entire installation route. These markings will be field verified by We Energies personnel and installation will not proceed if we determine this requirement is not complete.

Lawn and pavement repair:

- Repair in the public right-of-way, for facilities installed beyond your project limits, will be completed according to municipal guidelines.
- Repair within your development will include backfilling and compacting using existing soil.
- All cut brush, shrubs and trees will be left at the site along our trench route.

Refund details:

- Refunds may be available for up to five years after the energization date and will not exceed the amount of the original cost.
- Refunds in the amount of \$0.00 may be made for each single-phase residential/farm customer connecting to this extension.
- Additional refunds for larger services also may be available up to the original cost. The refund amounts vary based on the size of the meter set.
- Refunds will not exceed the amount of the original refundable cost of \$0.00.

Your next step is to sign this letter and return it, along with a signed drawing and your payment. You may wish to make a copy of the letter for your records. Sign and return the enclosed Grade Verification Form only after all its provisions have been met. Please call me with any questions. I look forward to working with you to make your project a success.

Sincerely,

Mark Kofnetka
Energy Services Consultant
920-380-3549

Work Request #: 5079216


☐ I certify the grade was confirmed by a surveying/engineering firm and lot corner stakes are installed.

Accepted by: _____

Title: _____ Date: _____

P.S. For more information on the application and construction process for new developments, visit www.we-energies.com/contractors.

Enclosure



5079216

RELAY

☐ C ☐ T ☒ V:

HARRISON

CUST/PROJ NAME:

CROSSROADS BUSINESS PARK

PROJECT LOCATION:

CTH KK AND FRIENDSHIP DR

PREPARED BY: HEATH HEMAUER (K)

E-MAIL: HEATH.HEMAUER@WE-ENERGIES.COM

OFFICE #: 920-931-3210

CELL #: 920-522-3676

PROJECT ID: WI5079216

IO #: 16883

OPERATING MAPS: 3960-8984-04

EXISTING FEEDER: FHCL52 HIGHCLIFF SS

PROPOSED FEEDER: FHCL52 HIGHCLIFF SS

T-R-S - ¼Q: T20N R19E S6NW CGS#:

TYPE OF WORK:

☒ SUBDIVISION-UNDERGROUND FACILITIES

☐ SUBDIVISION-OVERHEAD FACILITIES

☐ SUBDIVISION STREET LIGHT - UNDERGROUND FACILITIES

☐ SUBDIVISION STREET LIGHT - OVERHEAD FACILITIES

☐ SUBDIVISION - RELOCATE FACILITIES

☐ OTHER:

STAKING REQUIREMENTS:

☒ SURVEYOR ☐ STAKED

☐ DESIGNER ☐ NOT NEEDED

RESTORE PRIVATE PROPERTY:

☐ YES ☒ NO

JU COMPANY:

JOB #

ENGINEERING CONTACT:

CONSTRUCTION CONTACT:

PHONE #

PHONE #

CONSTRUCTION EMAIL:

EXCEPTIONS/ JU SIGNATURES:

JU COMPANY:

JOB #

ENGINEERING CONTACT:

CONSTRUCTION CONTACT:

PHONE #

PHONE #

CONSTRUCTION EMAIL:

EXCEPTIONS/ JU SIGNATURES:

CONTACT JU PARTNERS 3-5 DAYS PRIOR TO CONSTRUCTION.

JOINT USE KEY:

=

=

=

=

RELATED WORK REQUESTS:

OH:

DB:

SLDB

SLOH:

☒ ROW TO OBTAIN EASEMENT / ADD EASEMENT. SURVEYOR TO STAKE C/L AND MARK WIDTH OF EASEMENT ON STAKE.

☐ ROW TO CONTACT CST/DESIGNER FOR EASEMENT REQ'S.

☐ NO NEW EASEMENTS REQUIRED

DEVELOPER:	
COMPANY NAME	VILLAGE OF HARRISON
ADDRESS	W5298 STH 114
CITY, STATE	MENASHA, WI
CONTACT NAME	CHAD PELISHEK
PHONE	920-989-1062
EMAIL	CPELISHEK@HARRISON-WI.ORG
ENGINEERING:	
COMPANY NAME	MCPHON
CONTACT NAME	LEE REIBOLD
PHONE	920-427-6020
EMAIL	LREIBOLD@MCMGRP.COM
TOTAL TRENCH LENGTH: 2,799'	
TOTAL BORE LENGTH: 280'	
TOTAL NUMBER OF TRANSFORMERS: 0	
TOTAL NUMBER OF PEDESTALS: 0	
DIMENSIONING NOTES: ALL CABLES TO BE INSTALLED 3' OFF PL UNLESS OTHERWISE NOTED	

CONSTRUCTION REMARKS:

- * UNLESS NOTED OTHERWISE IN CONJUNCTION WITH
 - WR509218 (GAS)
- * DESIGN BASED ON TRENCHING AND BORING.
IF ROCK IS ENCOUNTERED ADDITIONAL
EQUIPMENT MAY BE REQUIRED AT
ADDITIONAL COST.
- * STORM, SANITARY, AND WATER WILL BE INSTALLED
PRIOR TO INSTALLATION. DEPTH OF UTILITIES
MUST BE VERIFIED ON SITE.
- * LATERALS MAY BE ENCOUNTERED WHEN TRENCHING
ALL LOTS HAVE INDIVIDUAL LATERALS.
CAUTION MUST BE APPLIED WHEN CROSSING LATERALS.
- * INSTALL AT STANDARD DEPTH UNLESS OTHERWISE NOTED.
- * CABLES TO BE INSTALLED IN EASEMENT.
VERIFY STATUS OF EASEMENT PRIOR TO
CONSTRUCTION.
- * TOTAL EXCAVATION = 3,079'
 - SOLO TRENCH = 1,187'
 - JOINT TRENCH = 1,612'
 - BORE = 280'

INSTALL INLET PROTECTION TYPE D AT ALL CURB INLETS WITHIN
PROJECT SITE IF NOT ACCOUNTED FOR BY DEVELOPER

NOTES:

- * WE ENERGIES WILL NOT RESTORE OR HAUL SPOIL UNLESS OTHERWISE NOTED ON SKETCH
- * CUSTOMER/DEVELOPER IS RESPONSIBLE FOR LOCATING ANY/ALL PRIVATE UNDERGROUND FACILITIES AND/OR OBSTRUCTIONS INCLUDING THOSE THAT HAVE NOT YET BEEN TURNED OVER TO THE MUNICIPALITY
- * WE ENERGIES AND/OR ITS CONTRACTORS ARE NOT RESPONSIBLE FOR DAMAGE TO UNMARKED FACILITIES
- * CUSTOMER/DEVELOPER AND THEIR CONTRACTORSSUB-CONTRACTORS MUST KEEP WE ENERGIES EASEMENT AREAS FREE AND CLEAR OF OBSTURCTIONS AND ENSURE ACCESS TO EASEMENT AREAS IS PROVIDED INCLUDING, BUT NOT LIMITED TO: DUMPSTERS, SPOIL, BACKFILL MATERIAL, ETC.
- * CUSTOMER/DEVELOPER AND THEIR CONTRACTORSSUB-CONTRACTORS MUST ENSURE THAT GRADE AT TIME OF WE ENERGIES INSTALLATION IS WITHIN 4" OF FINAL GRADE INCLUDING ANY PLANS FOR FUTURE LANDSCAPING
- * ANY FIELD ADJUSTMENTS TO SIGNED/APPROVED SKETCH MAY RESULT IN ADDITIONAL COSTS INCURRED BY THE DEVELOPER
- * WE ENERGIES IS NOT RESPONSIBLE FOR DAMAGE TO TREES AND/OR ROOTS LOCATED ALONG TRENCH ROUTE
- * WE ENERGIES AND/OR ITS CONTRACTORS WILL CLEAN ANY MUD/DEBRIS THAT IS TRACKED ONTO EXISTING ROADS AS A RESULT OF THEIR CONSTRUCTION DAILY
- * WE ENERGIES AND ITS CONTRACTORS ARE NOT RESPONSIBLE FOR COMPACTION ISSUES OR DAMAGES TO GRAVELED ROADS
- * ANY ADDITIONAL SPECIAL NOTES OR PROVISIONS

CUSTOMER'S SIGNATURE OF APPROVAL _____ DATE _____

The site plan shows a residential development with several streets. CROSSROADS CT is a horizontal street that runs through the center of the plan. To its north is CR-KK, and to its south is FIELDCREST DR. To the west of CROSSROADS CT is FRIENDSHIP DR, which runs vertically. To the east of CROSSROADS CT is WI-55, which runs diagonally. The plan is divided into two sheets: SHEET 4, which covers the upper portion of the plan, and SHEET 5, which covers the lower portion. A north arrow is located in the top right corner of the plan.

EROSION CONTROL NOTES	
<input checked="" type="checkbox"/>	IF DISTURBANCE OCCURS IN SUMMER, FINAL STABILIZATION SHALL BE PERMANENT SEED AND PROPERLY ANCHORED MULCH, UNLESS NOTED. IF DISTURBANCE OCCURS IN WINTER, TEMPORARY STABILIZATION SHALL BE SOIL STABILIZER, UNLESS NOTED. FINAL STABILIZATION IS REQUIRED IN SPRING.
<input type="checkbox"/>	IF DISTURBANCE OCCURS WITHIN THE SLOPE INTERCEPT, FINAL STABILIZATION SHALL BE SOIL STABILIZER, UNLESS NOTED. IF DISTURBANCE OCCURS OUTSIDE THE SLOPE INTERCEPT, FINAL STABILIZATION SHALL BE PERMANENT SEED AND PROPERLY ANCHORED MULCH, UNLESS NOTED.
<input type="checkbox"/>	IF DISTURBANCE OCCURS IN AGRICULTURAL FIELDS, SOIL SEGREGATION WILL NEED TO TAKE PLACE TO RETURN FIELDS TO PRE-CONSTRUCTION SOIL STRATIFICATION AND TO PRE-CONSTRUCTION ELEVATIONS.
<input checked="" type="checkbox"/>	DEPENDING ON THE TIME OF YEAR AND WEATHER CONDITIONS, CONSIDER USING PLATES/MATS IN WETLANDS OR CROSSING DITCHES.
<input type="checkbox"/>	STOCKPILE MATERIALS SHALL BE PLACED UPSLOPE FROM EXCAVATION. IF STOCKPILE MATERIALS MUST BE PLACED DOWNSLOPE OF EXCAVATION, PROTECT STOCKPILES WITH 12" WATTLES.
<input type="checkbox"/>	PROJECT SPECIFIC EROSION CONTROL NOTES:

WR
5079216

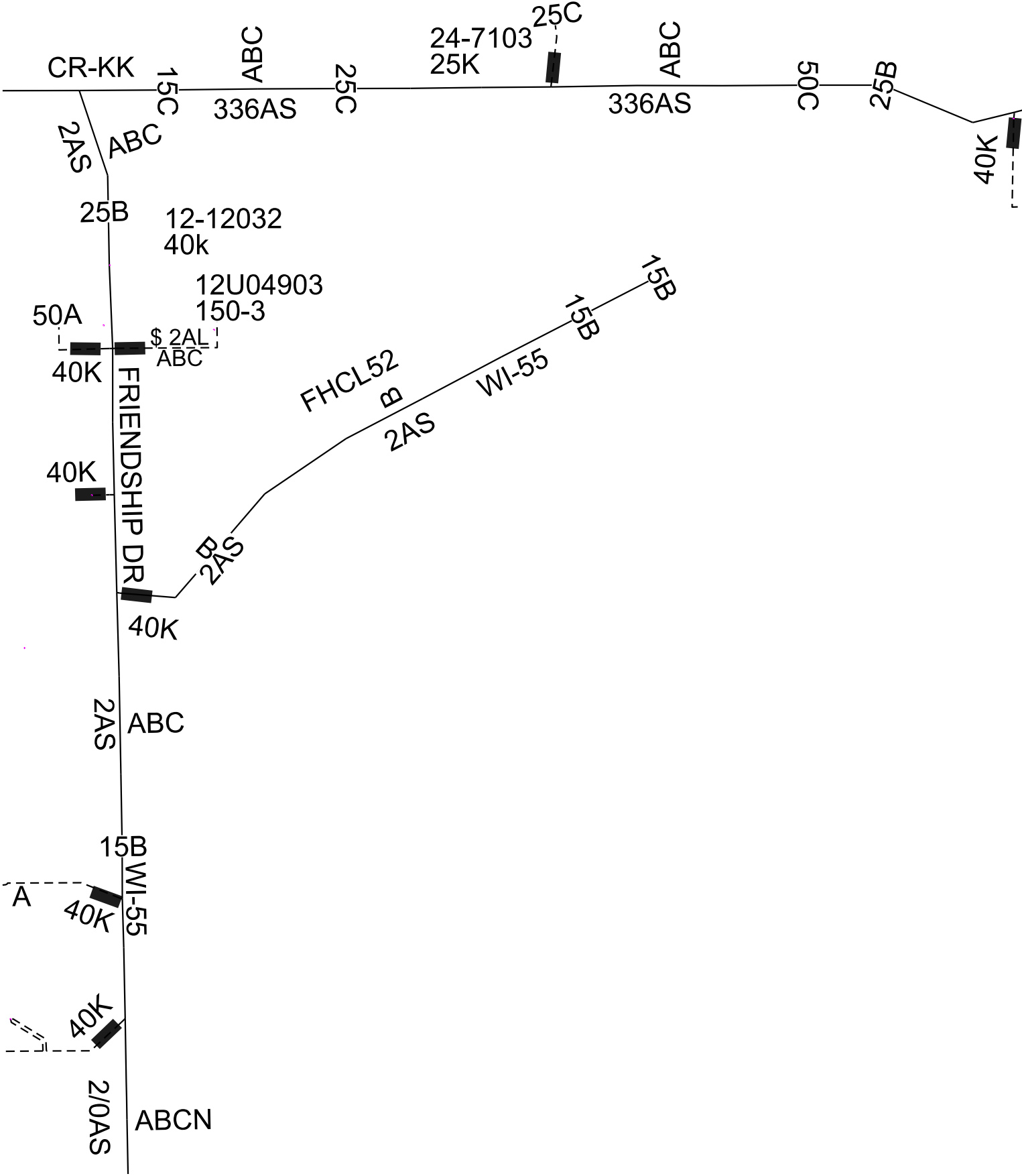
REV.	DESCRIPTION	BY	DATE
0	DESIGN APPROVED FOR CONSTRUCTION	HH	6/17/25
1	INCLUDED POLE REPLACEMENT AT CTH KK	HH	6/23/25

Printed 6/27/2025 10:56:06 AM

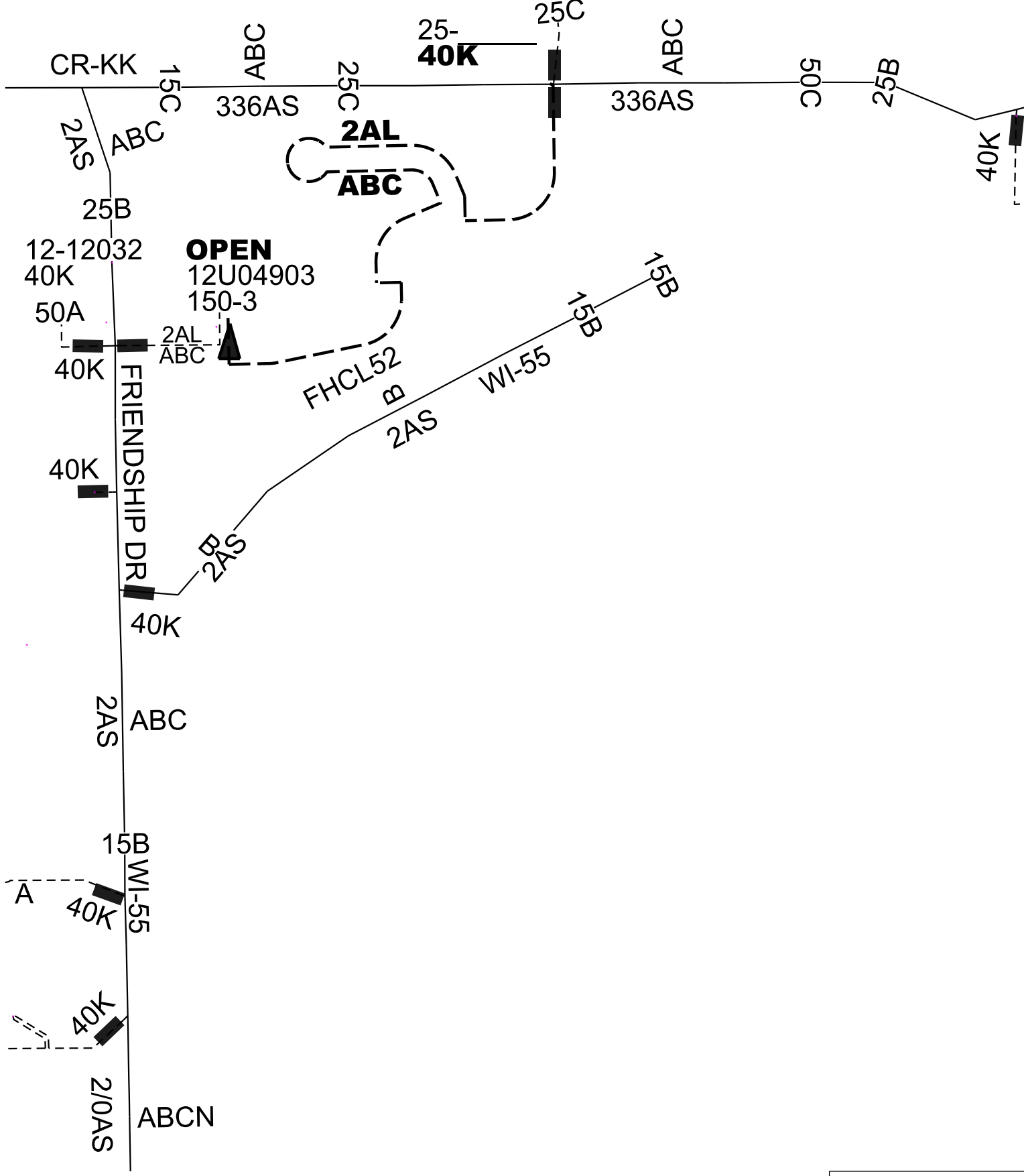
SHEET 1 OF 5



EXISTING FEEDER FHCL52



PROPOSED FEEDER FHCL52

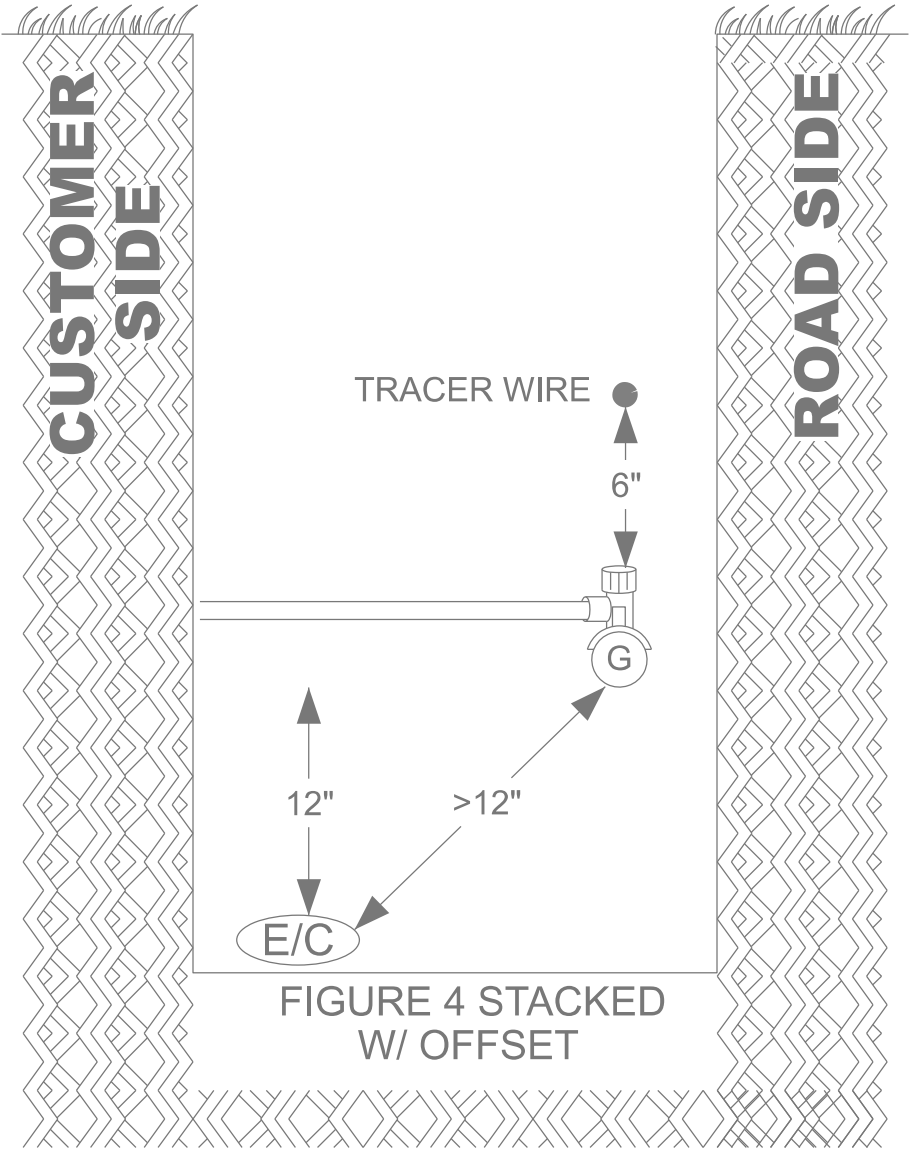




ACCEPTABLE INSTALLATIONS
(ALL DIMENSIONS ARE MINIMUM SEPARATION REQUIREMENTS)

KEY

- (G) = GAS MAIN
- (C) = COMMUNICATIONS
(REPRESENTS ONE OR MORE CABLES)
- (E/C) = ELECTRIC AND/OR COMMUNICATIONS
(REPRESENTS ONE OR MORE CABLES)



INSTALLATION IN EASEMENT

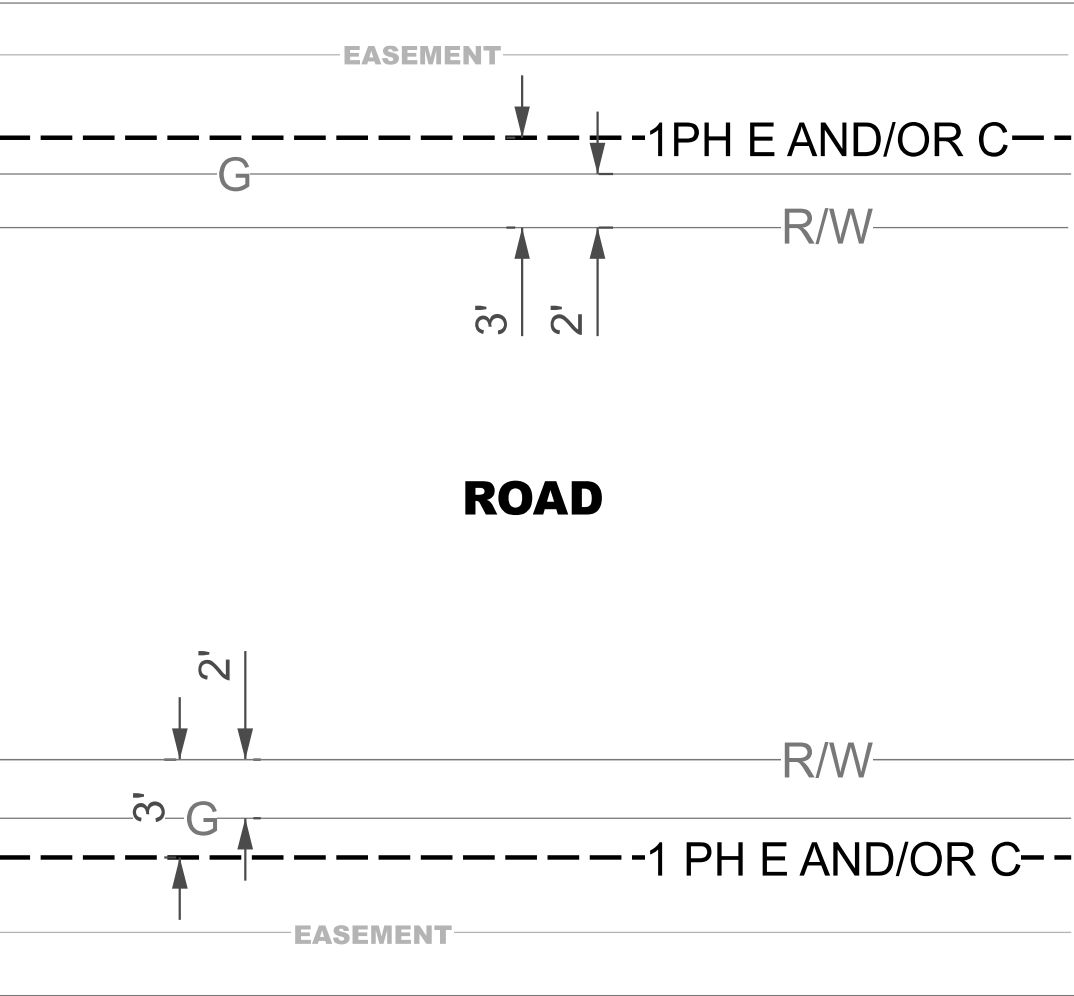
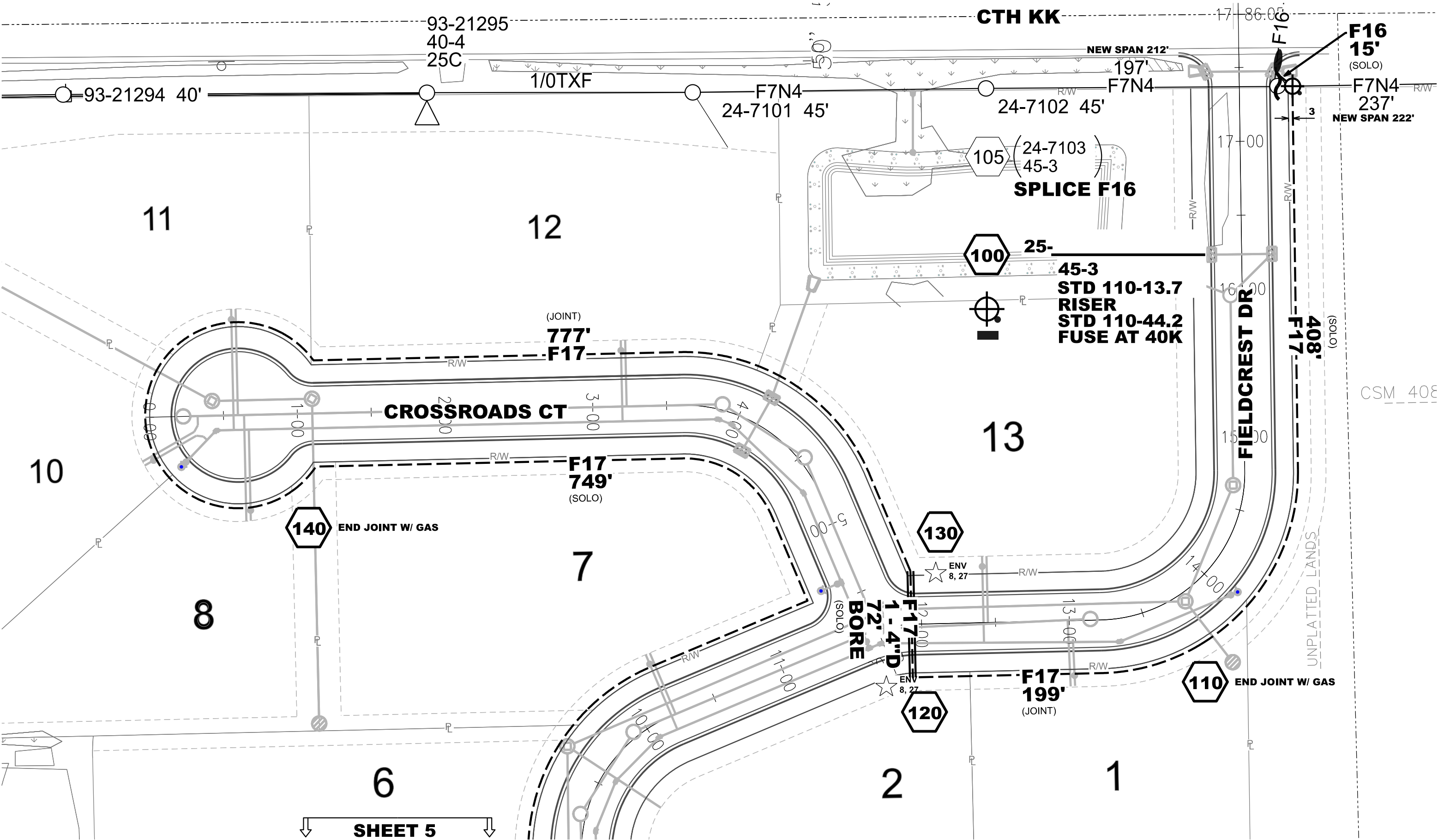


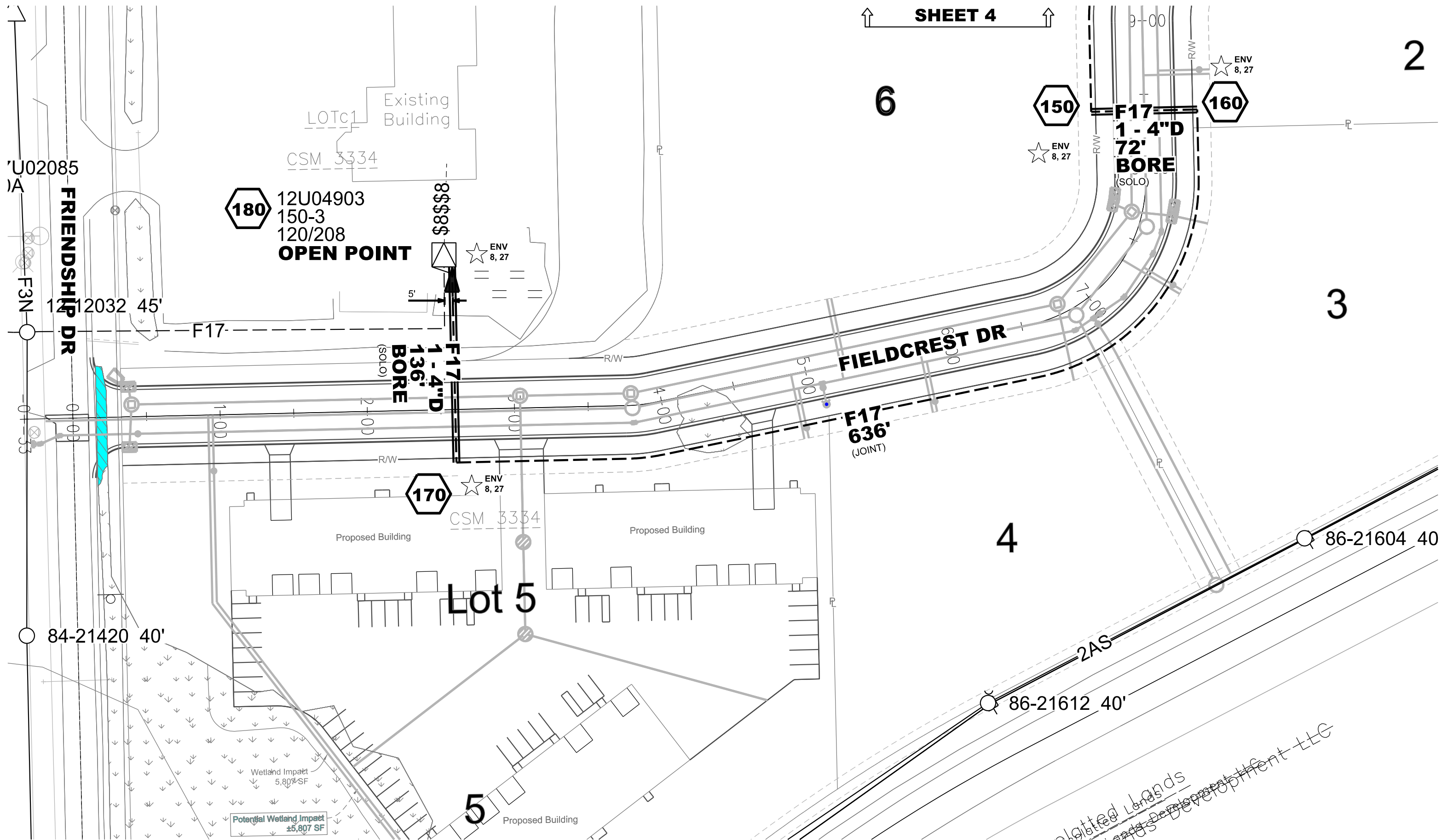
FIGURE 1





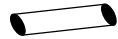


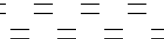

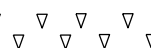

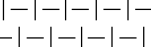



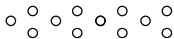


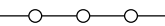


SHEET 5

SCALE 1" = 60'

SHEET 4 OF 5



<div><div>WE ENERGIES - ELECTRIC OPERATIONS</div><div>CLEARANCE NOTES:</div><div>-LOCATION OF OBSTRUCTIONS ARE FROM RECORDS AND MUST BE VERIFIED IN THE FIELD.</div><div>-MAINTAIN 2' MIN. CLEARANCE BETWEEN OUTSIDE FACE OF MANHOLE & BELL OF PIPE.</div><div>-THIS APPLIES TO GAS AND WATER MAINS.</div><div>-MAINTAIN 2' MIN. VERTICAL CLEARANCE AT CROSSINGS OF SEWER OR WATER MAINS.</div><div>-MAINTAIN 5' MIN. HORIZONTAL DIST. BETWEEN CONDUIT AND SEWER.</div><div>-MAINTAIN 3' MIN. HORIZONTAL DIST. BETWEEN CONDUIT AND WATER MAINS.</div><div>NOTE - CLEARANCES SHOWN ARE MINIMUM DISTANCES - REFERENCE PERMITS FOR SPECIFIC CLEARANCE REQUIREMENTS. ADDITIONAL UNDERGROUND INFORMATION ON EXCAVATION, BACKFILLING AND CLEARANCES CAN BE FOUND IN STD. 281-02.</div></div>	<div><div>OVERHEAD PRIMARY</div><div>E, F, H, Q, R, W, X or Z</div><div><div>Z1#2 ACSR</div><div>Z1#1/0 ACSR</div><div>Z2#3/0 ACSR</div><div>Z3#2 ACSR</div><div>Z4#1/0 ACSR</div><div>Z5#3/0 ACSR</div><div>Z7#336 ACSR</div><div>Z9SPECIAL LIST ON SKETCH</div><div>Z101 WIRE REMOVAL</div><div>Z112 WIRE REMOVAL</div><div>Z123WIRE REMOVAL</div></div><div><div>DIRECT BURY PRIMARY - E, F, H, Q, R, W, X or Z</div><div><div>Z13#1 AL 25KV</div><div>Z14#3 #1 AL 25KV</div><div>Z15#3 #500 AL 28KV</div><div>X16#2 AL 15KV</div><div>X17#3 #2 AL 15KV</div><div>X18#3 #500 AL 15KV</div><div>R19#3 #1/0 AL 35KV</div><div>R20#3 #750 AL 35KV</div><div>Z21#3 #750 AL 28KV</div></div><div><div>X22#2 Cu 15kV</div><div>X23#3 #2 Cu 15kV</div><div>Z24#1 #2 Cu 25kV</div><div>Z25#3 #2 Cu 25kV</div><div>X26#3 #500 Cu 15kV</div><div>Z27#3 #500 Cu 28kV</div><div>Z28#3 #750 Cu 28kV</div><div>Z29SPECIAL - LIST ON SKETCH</div></div></div></div>		<div><div>NEUTRAL</div><div>N1#2 ACSR</div><div>N1#1/0 ACSR</div><div>N2#1-#3/0 ACSR</div><div>N3#1-#4/0 AL</div><div>N4#1-#336 ACSR</div><div>N5REMOVAL</div><div>GUYING</div><div>G11/4" ARM GUY</div><div>G15/16" ARM GUY</div><div>G23/8" ARM GUY</div><div>G35/16" POLE GUY</div><div>G43/8" POLE GUY</div><div>G57/16" POLE GUY</div></div>	<div><div>SECONDARY - 1PHASE</div><div>S6DX</div><div>S14TX</div><div>S22TX</div><div>S31/0 TXR</div><div>S43/0 TXR</div><div>S5350 TXR</div><div>S6750 TXR</div><div>S71/0 TXF</div><div>S84/0 TXF</div><div>S9336 TXR</div><div>S10750 TXF</div><div>S113 WIRE REMOVAL</div><div>S123 WIRE MAIN</div><div>S146DX CIC</div><div>S151/0TX CIC</div></div>	<div><div>SECONDARY - 3PHASE</div><div>\$1/0 TXF</div><div>\$14/0 TXF</div><div>\$2336 TXF</div><div>\$33/0 TX</div><div>\$4350 TX</div><div>\$5750 TX</div><div>\$61/0 QXF</div><div>\$73/0 QXF</div><div>\$8350 QXR</div><div>\$9750 QXR</div><div>\$103 WIRE REMOVAL</div><div>\$113/0 QXR</div><div>\$124 WIRE REMOVAL</div></div>
--	---	--	---	---	--

<div>EROSION CONTROL LEGEND</div>	
<div><div></div><div>APPROXIMATE LOCATION FOR UNDERGROUND FACILITY EXCAVATION</div></div>	
<div><div></div><div>A/B/C/D</div><div>INLET PROTECTION, TYPE</div></div>	
<div><div></div><div>12" WATTLE or 12"/20" SEDIMENT LOG or 9.5"/20" EROSION EEL</div></div>	
<div><div></div><div>STONE DITCH CHECK</div></div>	
<div><div></div><div>ROCK BAG</div></div>	
<div><div></div><div>MULCH</div></div>	
<div><div></div><div>SOIL STABILIZER, TYPE B</div></div>	
<div><div></div><div>EROSION MAT CLASS I, TYPE A</div></div>	
<div><div></div><div>EROSION MAT CLASS I, TYPE B</div></div>	
<div><div></div><div>EROSION MAT CLASS I, TYPE A URBAN</div></div>	
<div><div></div><div>EROSION MAT CLASS I, TYPE B URBAN</div></div>	
<div><div></div><div>EROSION MAT CLASS II</div></div>	
<div><div></div><div>EROSION MAT CLASS III</div></div>	
<div><div></div><div>VEGETATIVE BUFFER</div></div>	
<div><div></div><div>TRACKING PAD</div></div>	
<div><div></div><div>TIMBER MAT</div></div>	
<div><div></div><div>SILT FENCE</div></div>	
<div><div></div><div>APPROXIMATE DEWATERING BASIN LOCATION</div></div>	
<div><div></div><div>SURFACE WATER FLOW</div></div>	

WE ENERGIES WORK REQUEST ENVIRONMENTAL NOTES (Notes 1 through 7 apply to ALL work requests)

General

- If WDNR and/or USACE permits were obtained for the project, all permit conditions shall be met during construction of the project.

Erosion Control

- If soil disturbance occurs on slopes or channels/ditches leading to wetlands or waterways, or within wetlands, the disturbed areas shall be stabilized and appropriate erosion control Best Management Practices (BMP's) shall be implemented.
- Erosion Control BMR's shall meet or exceed the approved WDNR Storm Watter Management Technical Standards (http://dnr.wi.gov/topic/stormwater/standards/const_standards.html). Refer to We Energies Construction Site Sediment and Erosion Control Standards.
- Inspect installed erosion control BMP's at least one time per week and after ½" rain events: repair as necessary.
- When temporary stabilization is required (e.g. for winter or short-term construction) prior to final restoration, soil stabilizer shall be installed wherever possible. Erosion mat shall be used temporarily only where appropriate, in accordance with state standards, and when approved by the Operations Supervisor.

Contaminated Soils

- Whenever soil exhibiting obvious signs of contamination (e.g., discoloration, petroleum or solvent odor, free liquids other than water, buried containers or tanks, or other obvious signs of environmental impacts) is encountered during excavation or installation, cease work immediately, take appropriate immediate precautions to ensure worker health and safety, and contact the Operations Supervisor or Inspector.

Spills

- If an oil spill occurs during construction, call the Environmental Incident Response Team (EIRT) at 414-430-3478:
 - Any quantity of oil is spilled into surface water;
 - Any oil spill greater than 50 ppm PCB into a sewer, vegetable garden, or grazing land;
 - Any oil spill containing greater than 500 ppm PCB;
 - Five gallons or more of oil spilled to the ground;
 - Any oil spill involving a police department, fire department, DNR, or concerned property owner.

Notes 8 through 27 apply as noted at specfic points withln each work request:

Dewatering

- Dewatering of pits or trenches shall be done in accordance with state standards. Use an approved sediment bag, a straw bale dewatering basin, a combination of both, or equivalent.

Wetlands

- As much as practicable, the majorityof the work shall be staged from the public roadways and road shoulders, keeping equipment out of adjacent wetlands.
- All work shall be conducted to minimize soil disturance. No rutting will be allowed within the wetlands.
- If soils are not frozen or stable to a point that avoids rutting, timber mats, mud tracks, or equivalent shall be utilized to access pole locations.
- Excavated soils cannot be stockpiled in wetlands.

- All excess spoils shall be removed from wetlands and placed in a suitable upland location.
- Trenching and pit excavations within wetlands shall include soil segregation to facilitate restoration of pre-construction soil stratification, and restoration to pre-construction elevations.
- Poles scheduled to be removed, and that occur within wetland, shall be cut at the ground surface.

Waterways

- No work can be performed within the banks or below the ordinary high watermark of any navigable waterways/streams.
- No crossing of navigable waterways with equipment can occur. Foot traffic is allowed.
- Any disturbed soil within 75-feet of the ordinary high water mark of any navigable waterways/streams shall be stabilized within 24 hours of construction completion.

Threatened and Endangered Species

- Threatened or endangered species are known to occur in the work area. It is illegal to harass, harm, or kill a protected species under state and federal regulations. Proper precautions shall be taken to ensure harm to individuals is avoided.
- In order to protect the threatened or endangered species, work must be conducted between November 5 and March 15.
- Exclusion fencing must be installed at the work area prior to March 15.
- A qualified biologist must be present when conducting work at this location.

Invasive Species

- State regulated invasive species are known to occur in the work area. Reasonable precautions are legally required to prevent the spread of these species. The Wisconsin Council on Forestry Transportation and Utility Rights-of Way Best Management Practices should be followed: (<http://council.wisconsinforestry.org/invasives/transportation/>).

Cultural and Historical Resources, cont.

- The project is within or adjacent to an area that is identified by the State of Wisconsin as potentially having Native American artifacts, burial mounds or burial sites, which could be encountered during construction.
- If human bone or any artifacts are discovered during construction, work must cease immediately. Contact the Environmental Department who will contact the State Burial Sites Preservation Office and determine the next steps that must be taken in order to comply with state law. Work at that site MAY NOT PROCEED until the Environmental Department authorizes it.
- A "qualified archaeologist," as specified under Wis. Stats 157.70 (1) (i) and Wis. Admin. Code HS 2.04 (6), must be present to monitor all ground disturbing activities.

Frac-out Contingency Plan

- A frac-out contingency plan shall be on-site and implemented accordingly. The contingency plan shall incorporate the following components.
 - Continuously inspect the bore paths for frac-outs in order to respond quickly and appropriately.
 - Containment materials (e.g. silt fence, straw bales, sand bags, etc.) shall be on site and available should a frac-out occur.
 - A vac truck shall be accessible on short notice in order to respond quickly to a frac-out.



GRADE VERIFICATION FORM

Establishing the final grade on your property is necessary prior to the installation of We Energies underground facilities. To ensure public safety, state and national codes require us to install our facilities at certain depths. If relocation or repair of our facilities becomes necessary because of a grade change greater than 4 inches, you will be billed the full relocation or repair costs. Site must be ready and this form submitted by Nov. 1 to avoid seasonal charges for installations between Dec. 1 and March 31.

Project Details

Development Name: Crossroads Business Park

Municipality: Village of Harrison

Work Request #: 5079216

AUTHORIZATION: I certify that I am the owner, or authorized representative of the owner, of the aforementioned development and that the entire route in which We Energies underground facilities are to be installed is within 4 inches of final grade. I certify the grade was confirmed by a surveying/engineering firm and that lot corner stakes are installed. I agree that I, or the owner of the property, will pay for any relocation or repair costs incurred by We Energies due to grade change in excess of 4 inches.

Signature: _____ Date: _____

Printed Name: _____

Title: _____