

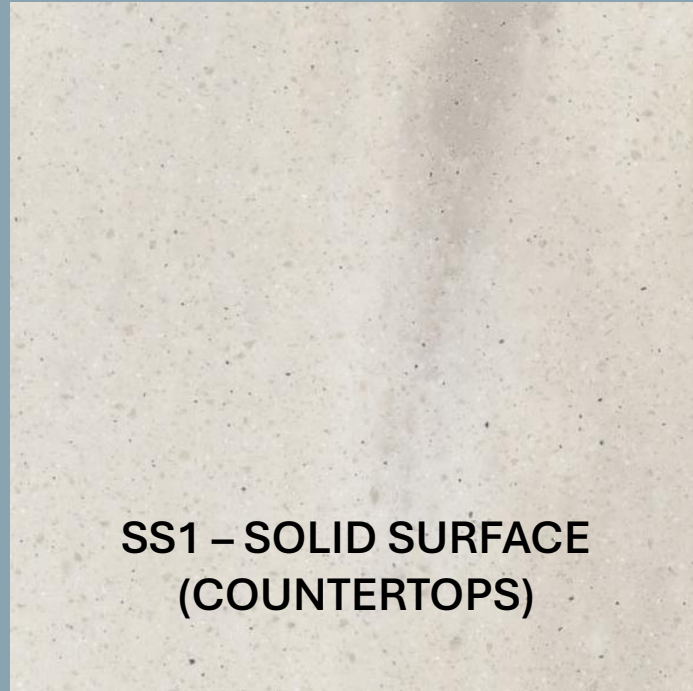
**OPTION 1A: WARM, WELCOMING & GROUNDED
– WARM GREIGE W/ SUBTLE BLUE ACCENTS**

**P2 – PAINT
(ACCENT)**

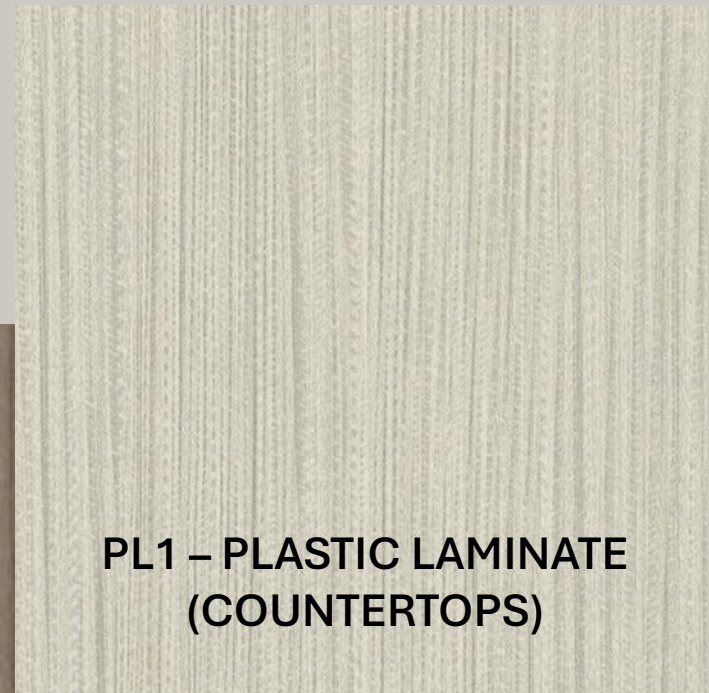
**P1 – PAINT
(FIELD)**



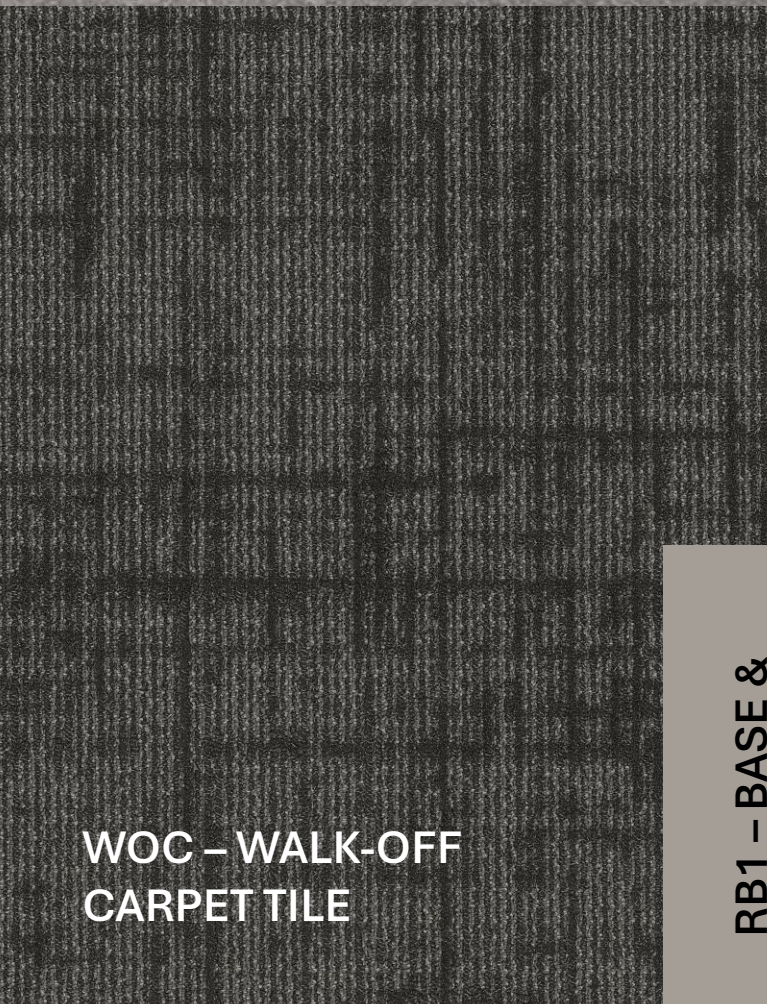
PT1/PWT1 – PORCELAIN TILE



**SS1 – SOLID SURFACE
(COUNTERTOPS)**



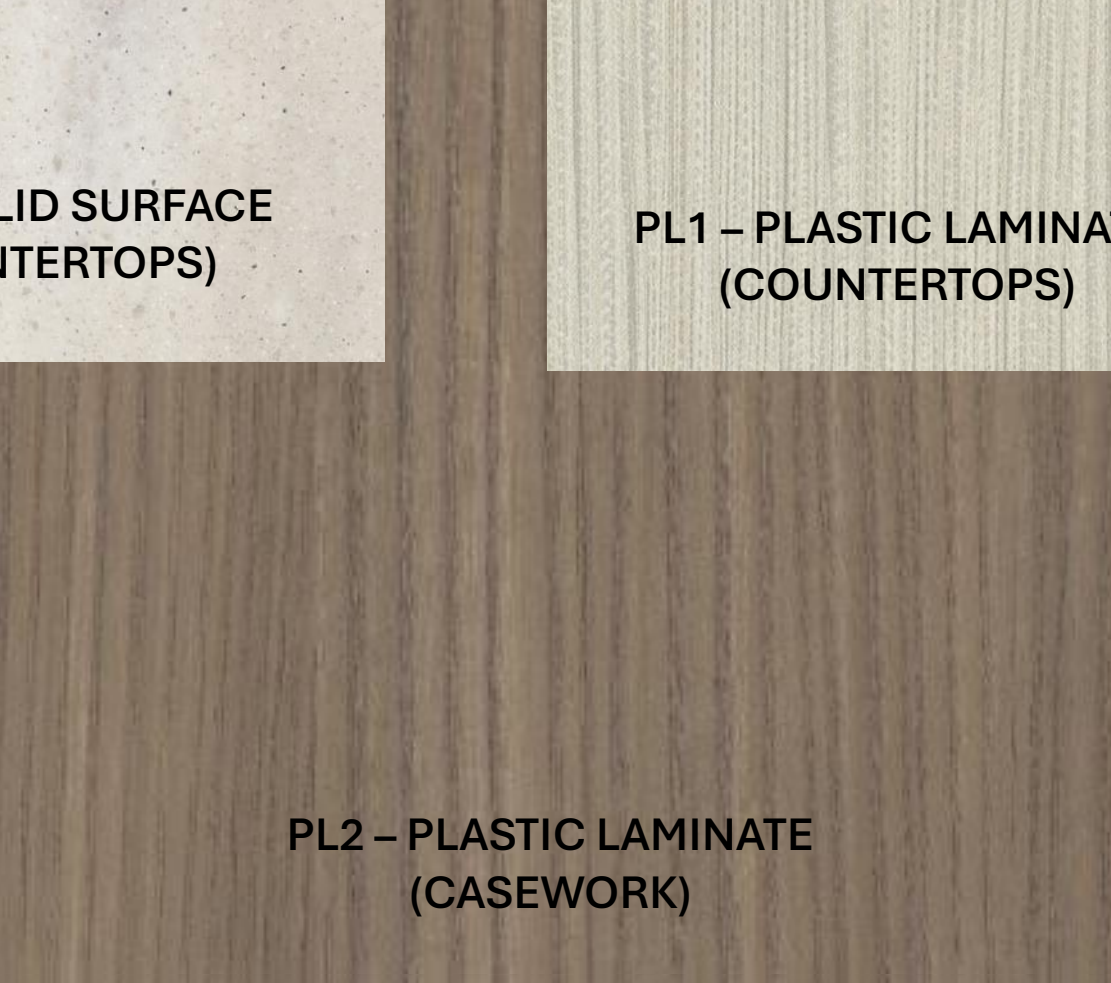
**PL1 – PLASTIC LAMINATE
(COUNTERTOPS)**



**WOC – WALK-OFF
CARPET TILE**



CPT1 – CARPET TILE



**PL2 – PLASTIC LAMINATE
(CASEWORK)**



**RB1 – BASE &
DOOR FRAME**



LVT1 - LUXURY VINYL TILE

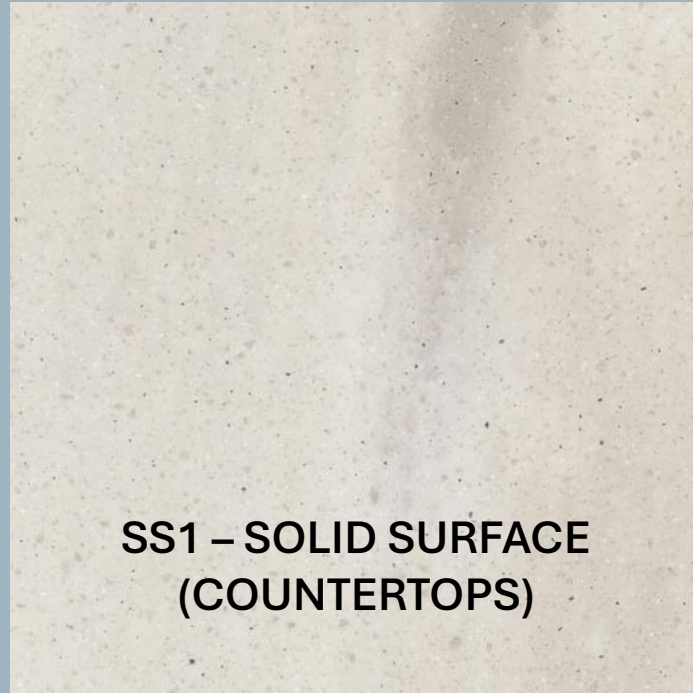
**OPTION 1B: INVITING, BRIGHT & AIRY
– COOL LIGHT GRAY W/ SUBTLE BLUE ACCENTS**

**P2 – PAINT
(ACCENT)**

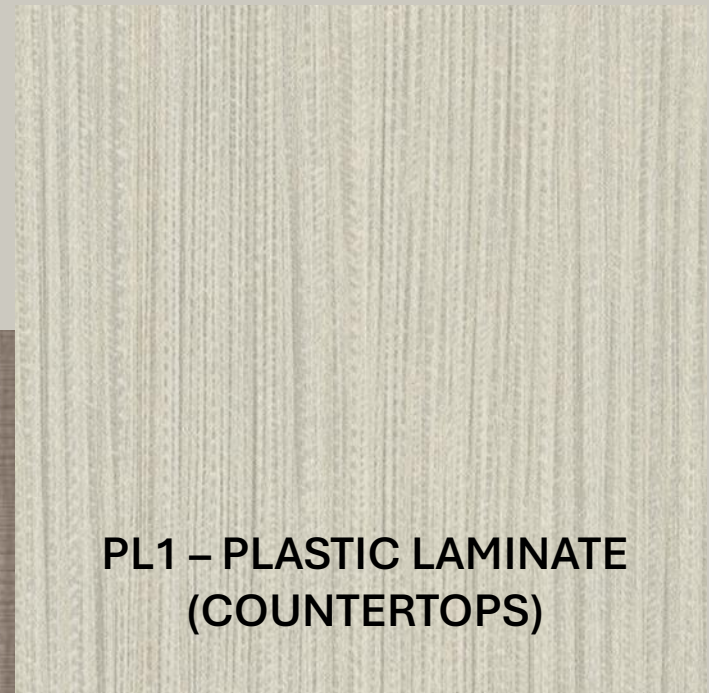
**P1 – PAINT
(FIELD)**



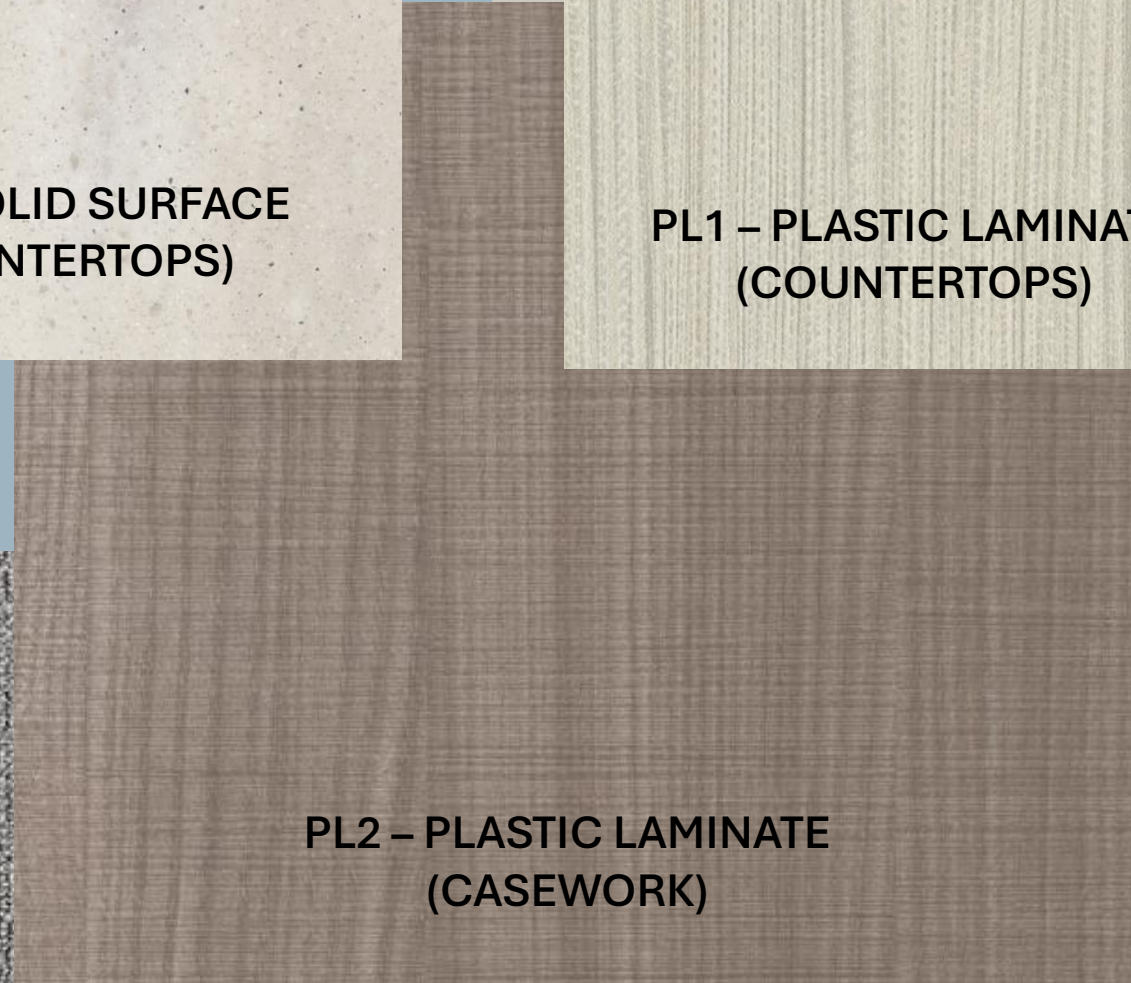
PT1/PWT1 – PORCELAIN TILE



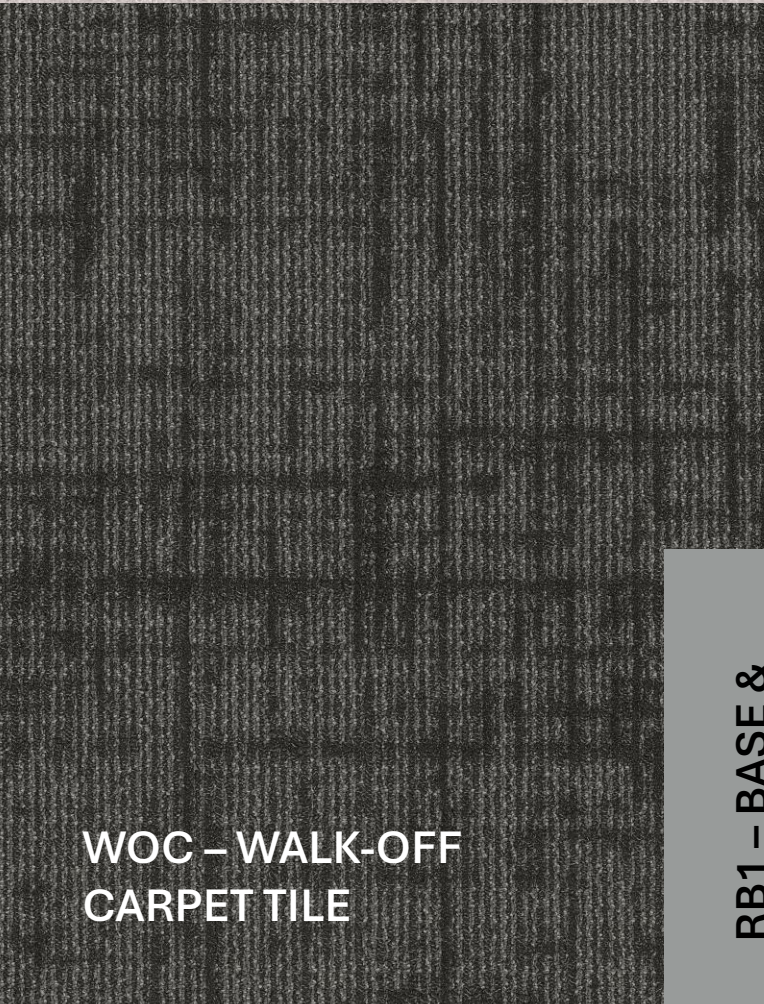
**SS1 – SOLID SURFACE
(COUNTERTOPS)**



**PL1 – PLASTIC LAMINATE
(COUNTERTOPS)**



**PL2 – PLASTIC LAMINATE
(CASEWORK)**



**WOC – WALK-OFF
CARPET TILE**



**RB1 – BASE &
DOOR FRAME**



CPT1 – CARPET TILE

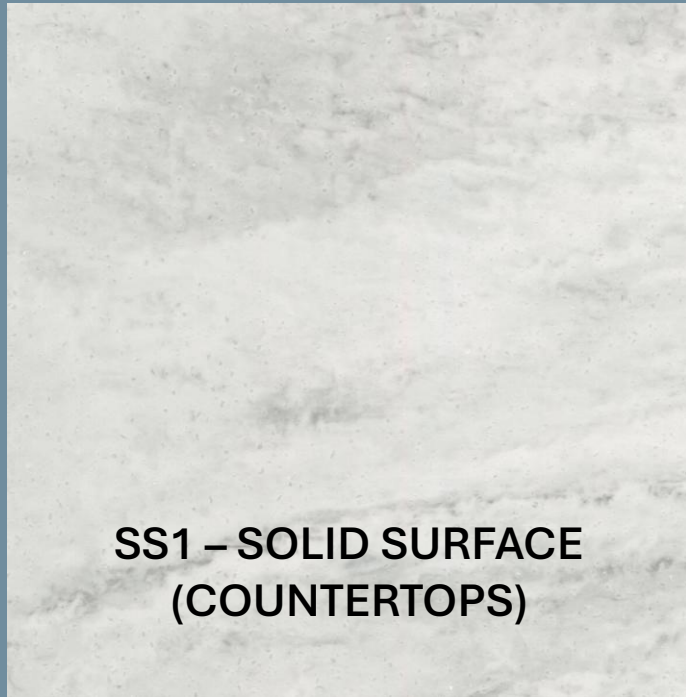


LVT1 - LUXURY VINYL TILE

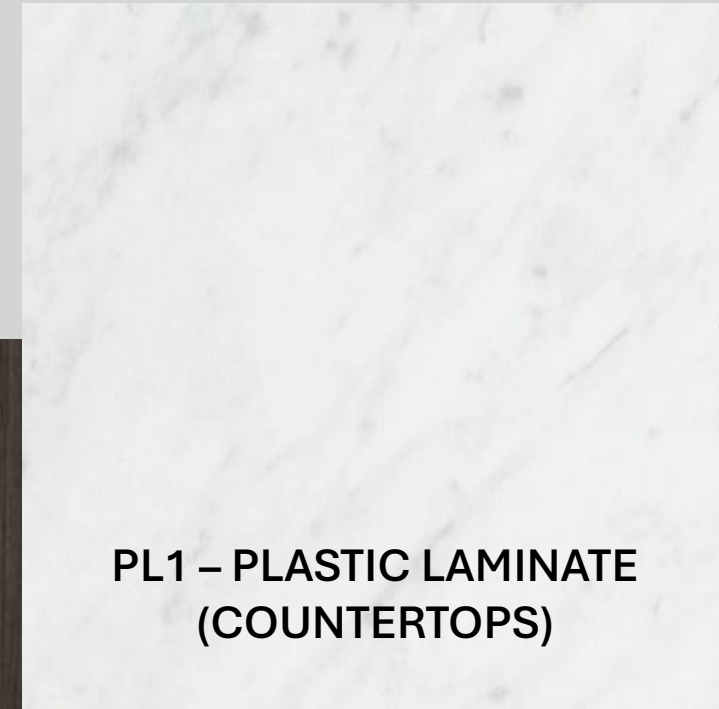
**OPTION 2A: MODERN, BOLD, & SOPHISTICATED
– DARK WARM GRAY W/ BLUE ACCENTS**

**P2 – PAINT
(OFFICE
ACCENT)**

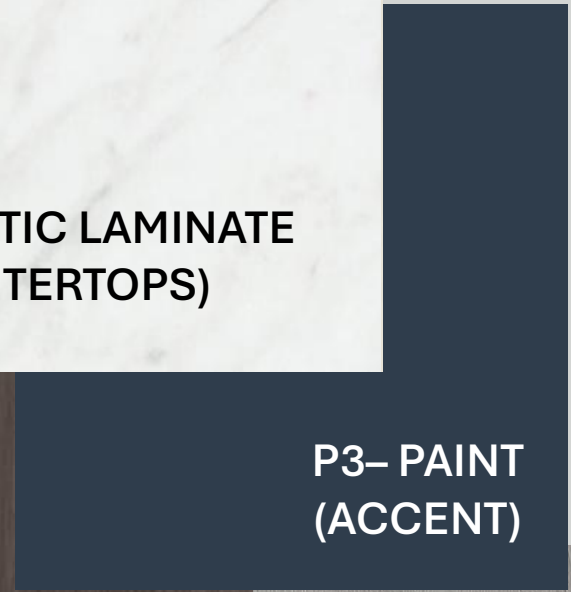
**P1 – PAINT
(FIELD)**



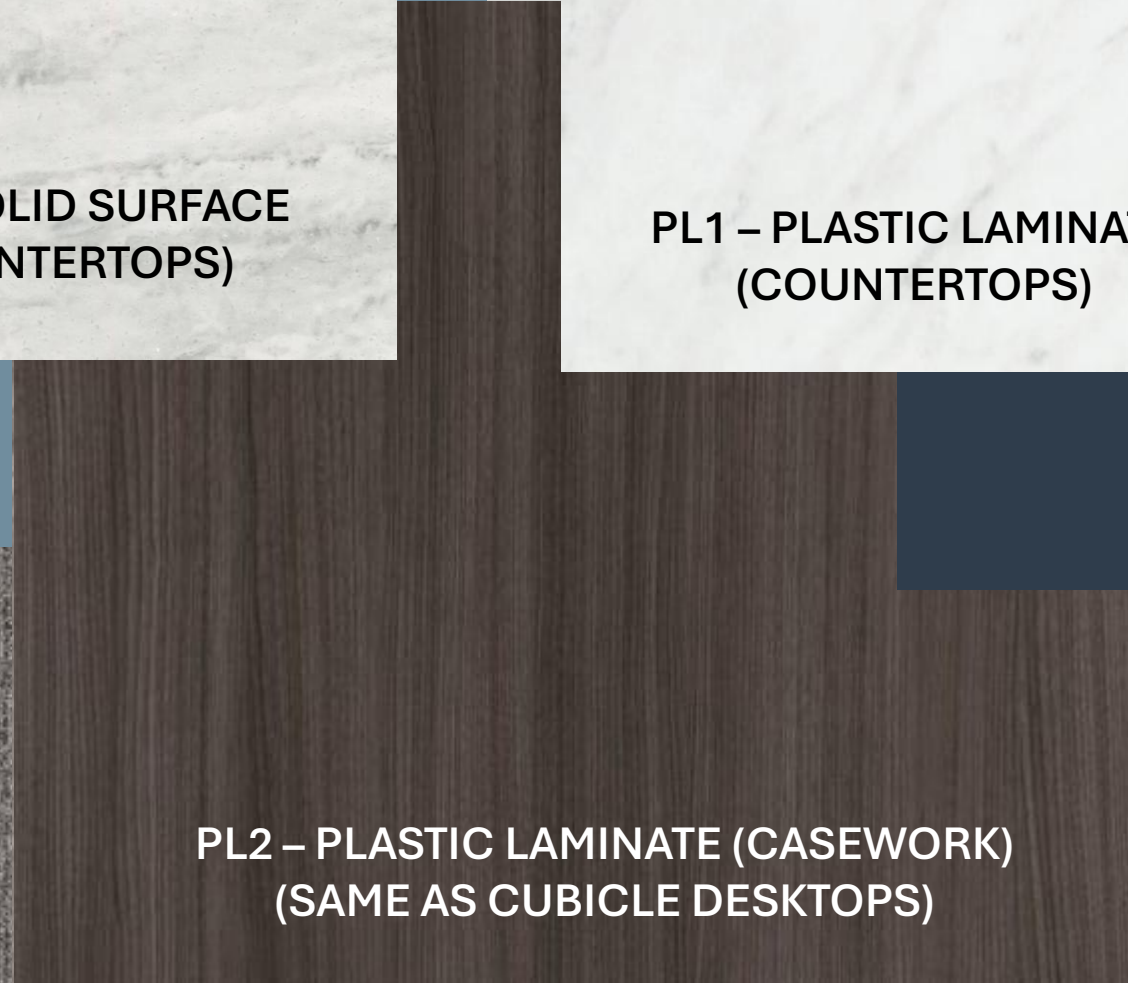
**SS1 – SOLID SURFACE
(COUNTERTOPS)**



**PL1 – PLASTIC LAMINATE
(COUNTERTOPS)**



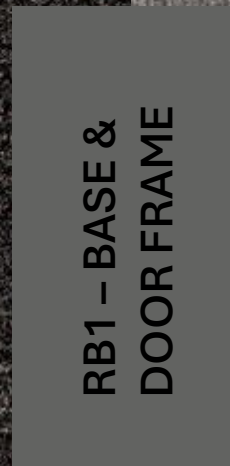
**P3 – PAINT
(ACCENT)**



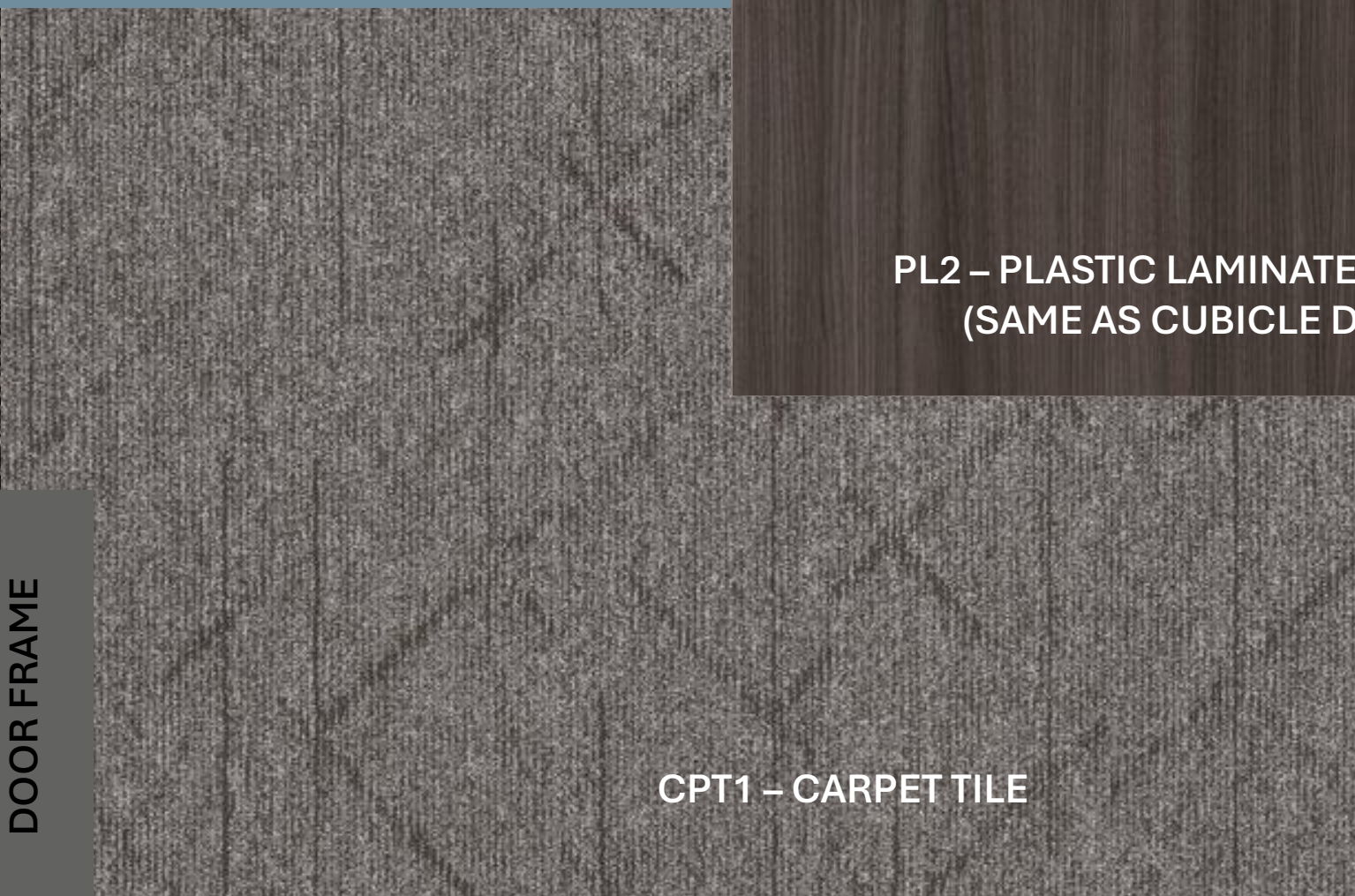
**PL2 – PLASTIC LAMINATE (CASEWORK)
(SAME AS CUBICLE DESKTOPS)**



**WOC – WALK-OFF
CARPET TILE**



**RB1 – BASE &
DOOR FRAME**



CPT1 – CARPET TILE

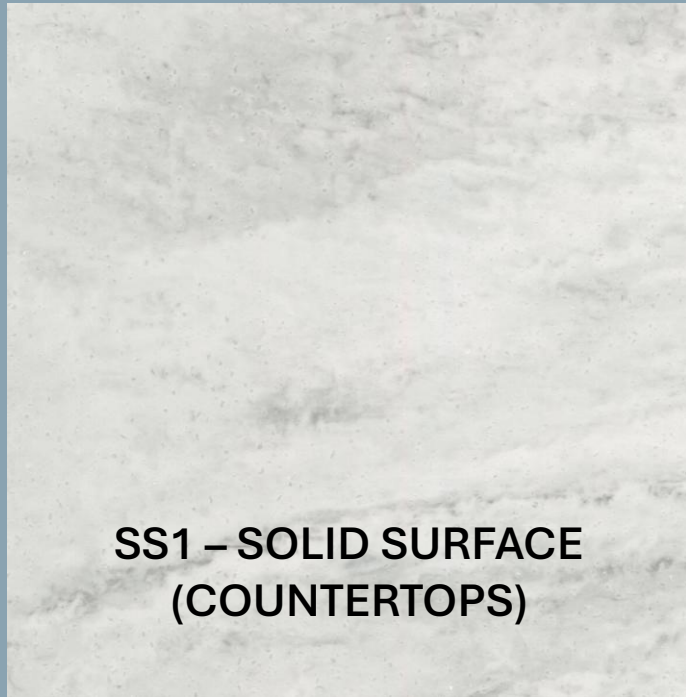


LVT1 - LUXURY VINYL TILE

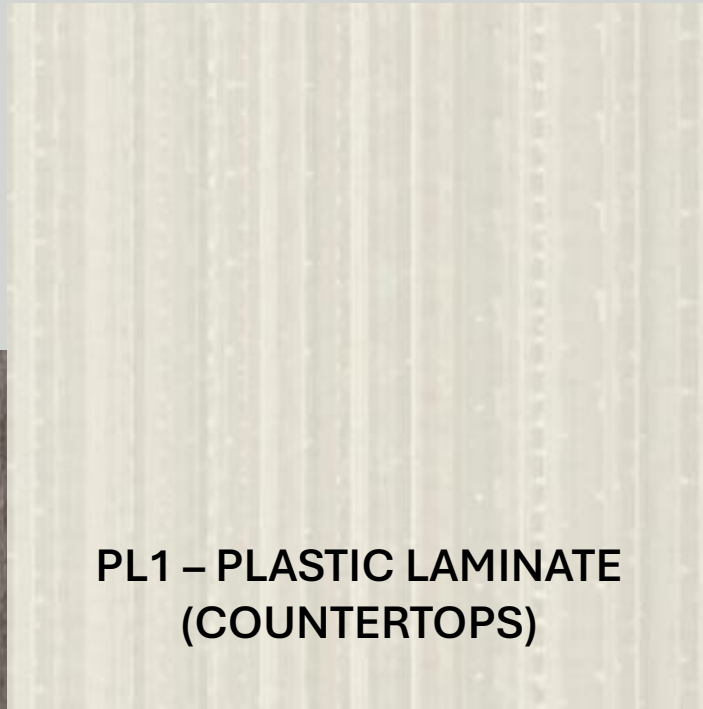
**OPTION 2B: MODERN, BOLD, & LIVELY
– COOL GRAY W/ BLUE ACCENTS**

**P2 – PAINT
(ACCENT)**

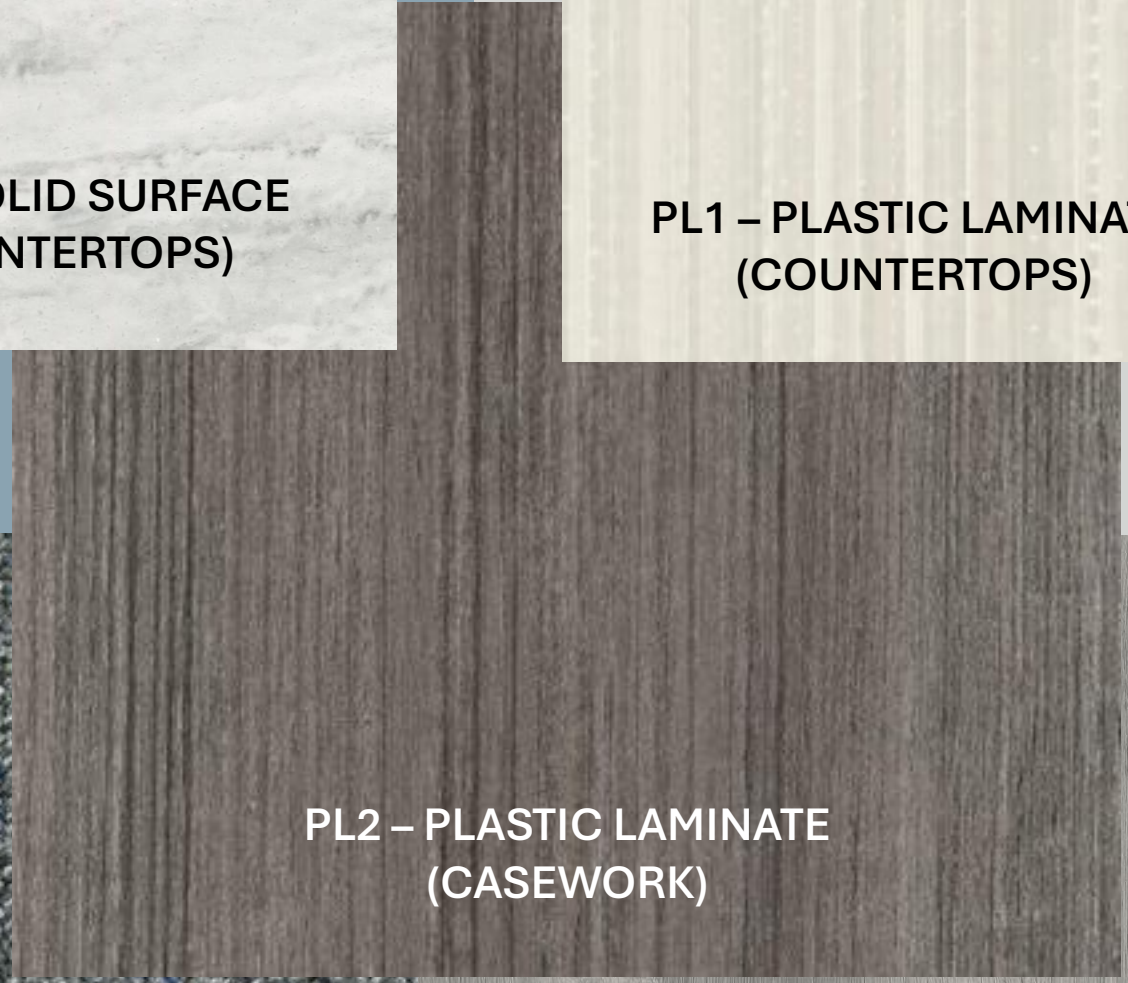
**P1 – PAINT
(FIELD)**



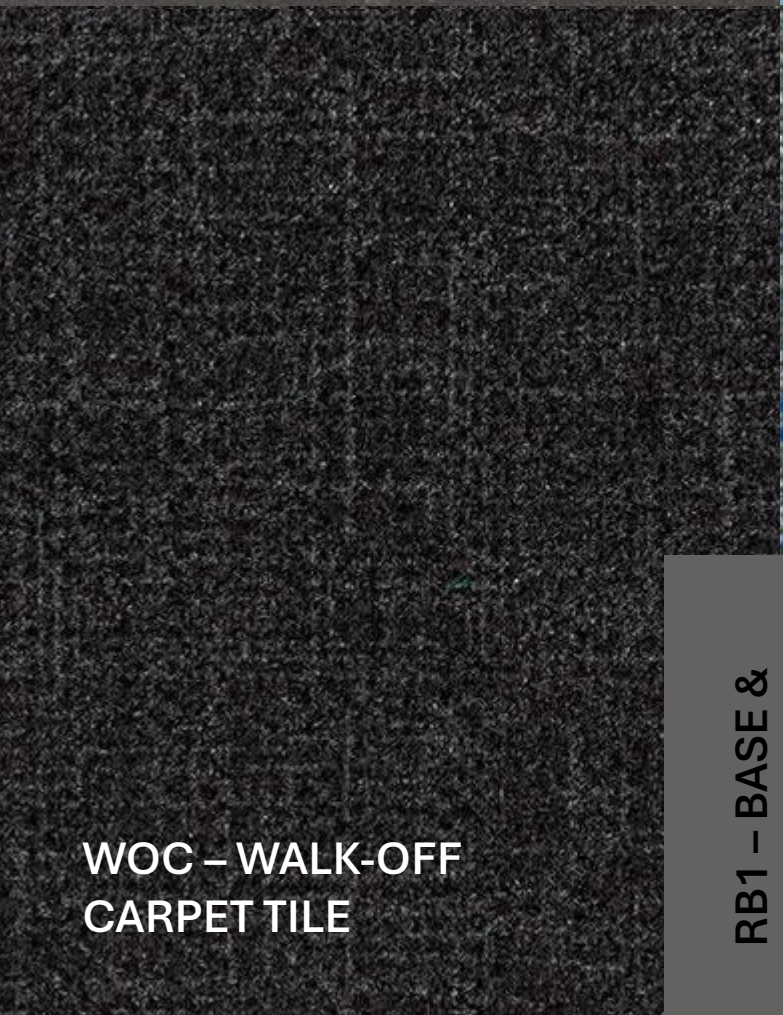
**SS1 – SOLID SURFACE
(COUNTERTOPS)**



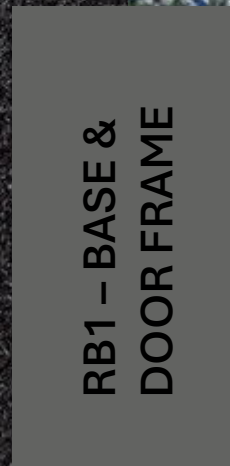
**PL1 – PLASTIC LAMINATE
(COUNTERTOPS)**



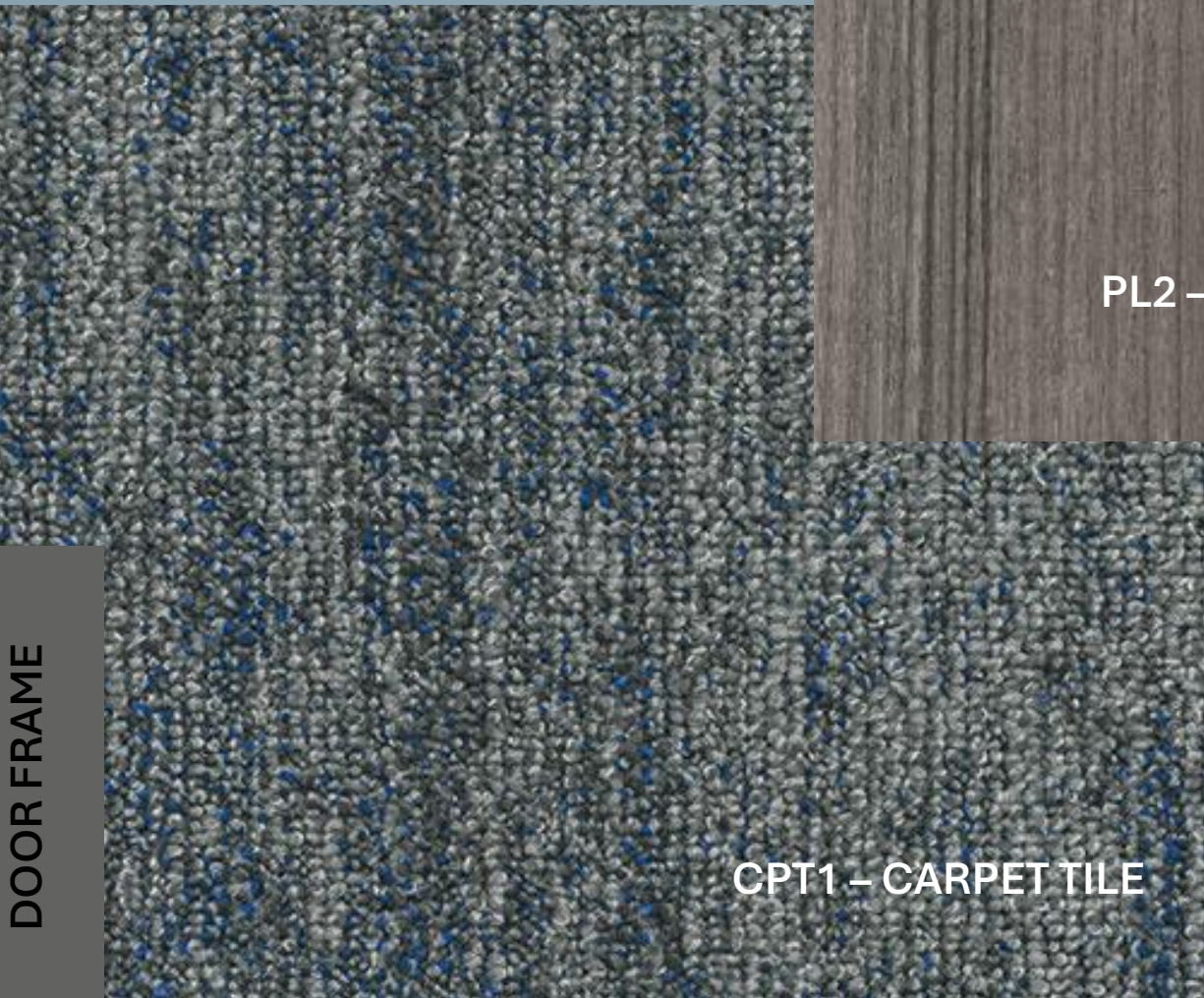
**PL2 – PLASTIC LAMINATE
(CASEWORK)**



**WOC – WALK-OFF
CARPET TILE**



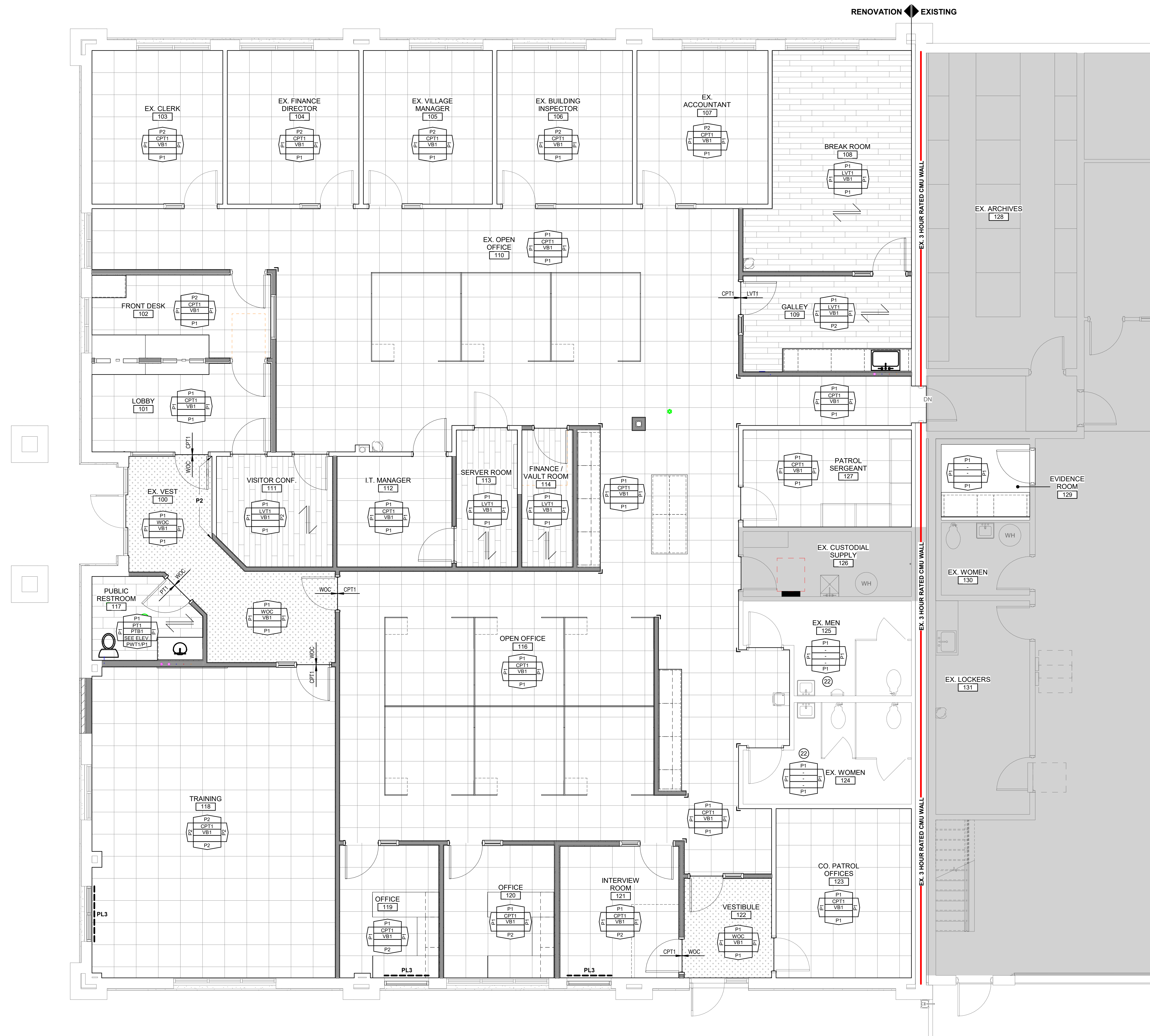
**RB1 – BASE &
DOOR FRAME**



CPT1 – CARPET TILE



LVT1 - LUXURY VINYL TILE



OFFICE REMODEL FINISH PLAN
 1/4" = 1'-0"

GENERAL FINISH NOTES

- SEE SPECIFICATIONS FOR SPECIFIC FINISH INFORMATION.
- PAINT ALL EXPOSED STEEL.
- SEE REFLECTED CEILING PLAN FOR CEILING FINISHES.
- COORDINATE FLOORING WITH PLUMBING FLOOR DRAINS. SEE PLUMBING PLANS FOR LOCATIONS.
- BASE 6" IN TOILET ROOMS.
- EXPOSED CEILING PAINTED (INCLUDES DUCTWORK, CONDUIT, STRUCTURE, ETC.) WHERE INDICATED.

FINISH PLAN LEGEND

- XXX XXX# TRANSITION BETWEEN FLOORING MATERIALS
- FLOORING INSTALLATION DIRECTION
- WALL FLOOR BASE NOTES WALL MATERIAL ABBREVIATIONS - SEE ABBREVIATIONS LIST AND SPECIFICATIONS FOR ADDITIONAL INFORMATION
- CG-# CORNER GUARD LOCATION - ALL CORNER GUARDS CG1 UNLESS OTHERWISE NOTED
- WINDOW SILL LOCATION - ALL WINDOW SILLS PL3 UNLESS OTHERWISE NOTED

ROOM FINISH ABBREVIATIONS

- FLOORS**
- WOC WALK-OFF CARPET TILE: DESIGN BASIS - TBD MILLIKEN;
 - CPT1 CARPET TILE: DESIGN BASIS - TBD INTERFACE: 24"x24" TILE
 - LVT1 LUXURY VINYL TILE: DESIGN BASIS - TBD INTERFACE:
 - PT1 PORCELAIN TILE: DESIGN BASIS - TBD DAL TILE: 12"x24" TILE.
- BASE**
- VB1 VINYL BASE: DESIGN BASIS - JOHNSONITE: 4"H
 - PTB1 PORCELAIN TILE BASE: DESIGN BASIS - TBD DAL TILE: 6"H
- WALLS**
- P1 PAINT: DESIGN BASIS - SHERWIN WILLIAMS (FIELD COLOR)
 - P2 PAINT: DESIGN BASIS - SHERWIN WILLIAMS (ACCENT COLOR)
 - P3 PAINT: DESIGN BASIS - SHERWIN WILLIAMS (DOOR & FRAME)
 - PWT1 PORCELAIN WALL TILE: DESIGN BASIS - TBD DAL TILE: 12"x24" TILE, 40"H WAINSCOT
- CABINETRY**
- PL1 PLASTIC LAMINATE: DESIGN BASIS - WILSONART (COUNTERTOPS)
 - PL2 PLASTIC LAMINATE: DESIGN BASIS - WILSONART (CASEWORK)
 - PL3 PLASTIC LAMINATE: MATCH EXISTING (WINDOW SILLS)
 - SS1 SOLID SURFACE: DESIGN BASIS - TBD CORIAN (COUNTERTOPS)
- MISC**
- CG1 CORNER GUARD: DESIGN BASIS - INPRO - COLOR TO MATCH P1

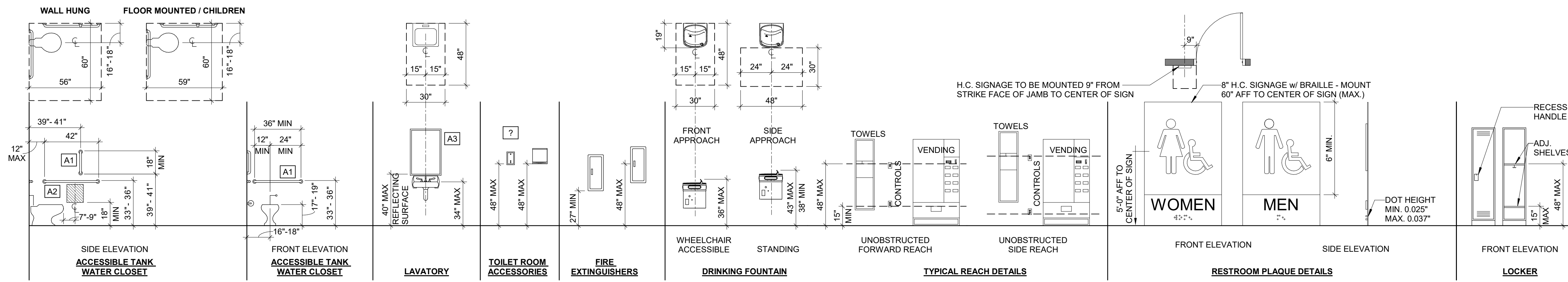
ROOM FINISH REMARKS

- DOOR FRAMES PAINTED w/ P3
- EXISTING PLASTIC LAMINATE WINDOW SILLS TO REMAIN.
- PAINT EXISTING DOOR FRAMINGS w/ P3

KEYED PLAN NOTES

- PAINT AND PATCH EXISTING WALLS THIS ROOM.

PRELIMINARY NOT FOR CONSTRUCTION



(FIXTURES SHOWN ABOVE ARE FOR DESIGN INTENT ONLY)

ACCESSORY / FIXTURE MOUNTING HEIGHTS & CLEARANCES

SCALE: 1/4" = 1'-0"

MARK	DESCRIPTION	FURNISHED BY	INSTALLED BY
A1	18", 36", & 42" STAINLESS GRAB BARS		
A2	TOILET TISSUE DISPENSER	GENERAL CONTRACTOR	GENERAL CONTRACTOR
A3	NAPKIN DISPOSAL (PARTITION)		
A4	SOAP DISPENSER		
A5	24" X 36" STAINLESS FRAMED MIRROR		
A6	PAPER TOWEL DISPENSER		

GENERAL INTERIOR & CASEWORK NOTES

- PROVIDE TOILET ACCESSORIES PER SPECIFICATIONS OR APPROVED EQUAL. INSTALL ACCORDING TO MANUF. SPECIFICATIONS.
- GENERAL CONTRACTOR TO PROVIDE ALL NECESSARY BACKING IN WALLS.
- PROVIDE OFFSET TRAP AND HW, CW, DRAIN INSULATION KIT AT ALL OPEN SINKS.
- FIELD VERIFY ALL DIMENSIONS PRIOR TO CASEWORK CONSTRUCTION.
- VERIFY ALL EQUIPMENT WITH OWNER PRIOR TO CONSTRUCTION.
- COORDINATE GROMMET LOCATIONS WITH OWNER PRIOR TO INSTALLATION.
- RADIUS ALL OUTSIDE CORNERS OF COUNTERTOPS.
- SUPPLY AND INSTALL SUPPORT BRACKETS AS NEEDED UNDER COUNTERTOPS.
- MINIMUM 1" FILLER WHERE CABINET IS 90 DEGREES TO WALL OR OTHER CABINETS.
- FOR SHELVES GREATER THAN 2'-6" IN WIDTH PROVIDE DOUBLE PLY FOR EACH ADJUSTABLE SHELF.

CASEWORK LEGEND

- INDICATES CASEWORK AND COUNTER MATERIAL. SEE FINISH SCHEDULE.
- CABINET FILLER - MINIMUM 1" FILLER WHERE CABINET IS 90 DEGREES TO WALL OR OTHER CABINETS
- COUNTER SUPPORT BRACKET
- FINISHED END PANEL
- KNEE SPACE
- LOCK ON CASEWORK DOOR
- FILE DRAWER HARDWARE WITH LOCK
- UNDERCOUNTER / UNDER CABINET LIGHT FIXTURE BY ELECTRICAL TRADE
- 6" DIA COUNTER TOP OPENING. SEE PLANS FOR QUANTITY, VERIFY SIZE WITH OWNER

KEYED PLAN NOTES

- SAFETY & SECURITY FILM ON GLAZING.
- BULLET DETERRENT GYP. BOARD UNDER COUNTER.
- 2-WAY ELEC. COMMUNICATION DEVICE
- 16"W X 8"H PASS-THRU WINDOW
- PENCIL TRAY
- COUNTER PRINTER - BY OTHERS
- RELOCATED EXISTING FILE CABINETS.

McMAHON ASSOCIATES, INC. provides the engineering and design services shown on these drawings and data, regardless of form, content, or use. The user of these drawings and data is responsible for obtaining appropriate permits and for verifying the accuracy of the information shown on these drawings and data. The user of these drawings and data is also responsible for obtaining any necessary approvals from the appropriate authorities. The user of these drawings and data is also responsible for obtaining any necessary approvals from the appropriate authorities. The user of these drawings and data is also responsible for obtaining any necessary approvals from the appropriate authorities.

McMAHON ASSOCIATES, INC. provides the engineering and design services shown on these drawings and data, regardless of form, content, or use. The user of these drawings and data is responsible for obtaining appropriate permits and for verifying the accuracy of the information shown on these drawings and data. The user of these drawings and data is also responsible for obtaining any necessary approvals from the appropriate authorities. The user of these drawings and data is also responsible for obtaining any necessary approvals from the appropriate authorities. The user of these drawings and data is also responsible for obtaining any necessary approvals from the appropriate authorities.

McMAHON ASSOCIATES, INC. provides the engineering and design services shown on these drawings and data, regardless of form, content, or use. The user of these drawings and data is responsible for obtaining appropriate permits and for verifying the accuracy of the information shown on these drawings and data. The user of these drawings and data is also responsible for obtaining any necessary approvals from the appropriate authorities. The user of these drawings and data is also responsible for obtaining any necessary approvals from the appropriate authorities. The user of these drawings and data is also responsible for obtaining any necessary approvals from the appropriate authorities.

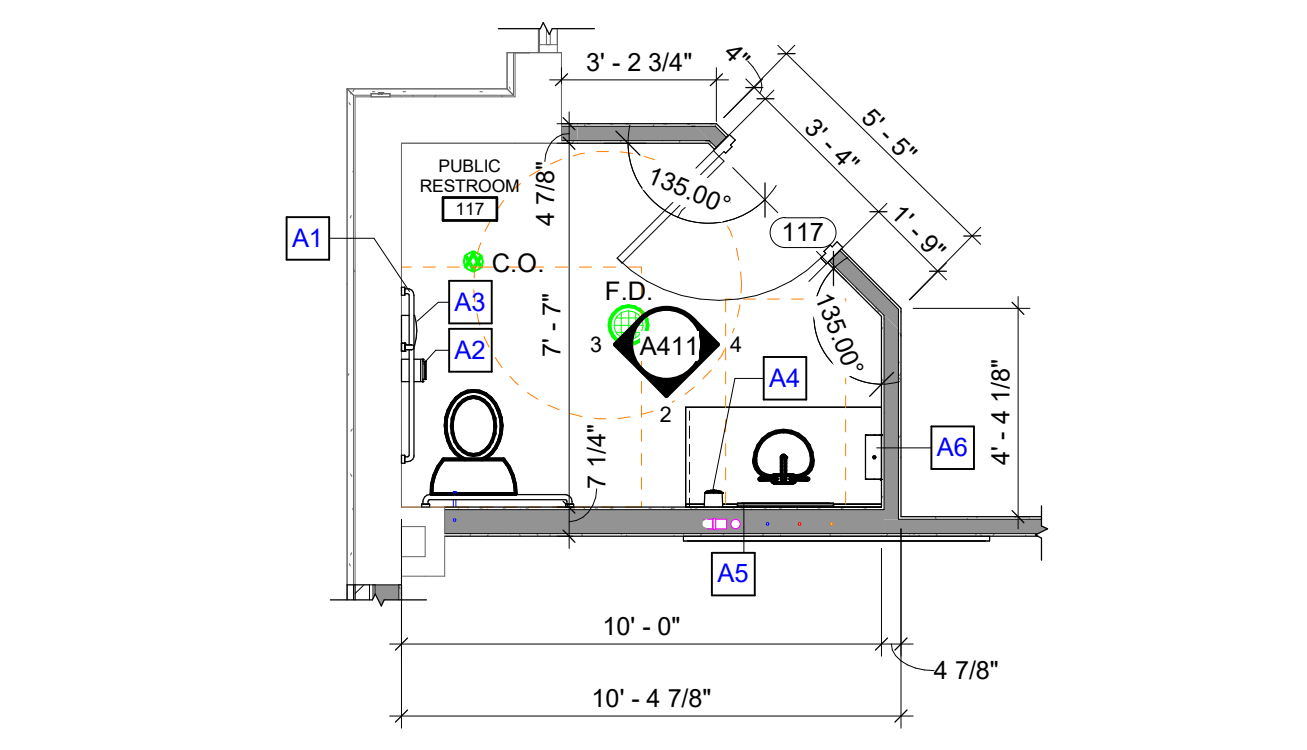
McMAHON ASSOCIATES, INC. provides the engineering and design services shown on these drawings and data, regardless of form, content, or use. The user of these drawings and data is responsible for obtaining appropriate permits and for verifying the accuracy of the information shown on these drawings and data. The user of these drawings and data is also responsible for obtaining any necessary approvals from the appropriate authorities. The user of these drawings and data is also responsible for obtaining any necessary approvals from the appropriate authorities. The user of these drawings and data is also responsible for obtaining any necessary approvals from the appropriate authorities.

McMAHON ASSOCIATES, INC. provides the engineering and design services shown on these drawings and data, regardless of form, content, or use. The user of these drawings and data is responsible for obtaining appropriate permits and for verifying the accuracy of the information shown on these drawings and data. The user of these drawings and data is also responsible for obtaining any necessary approvals from the appropriate authorities. The user of these drawings and data is also responsible for obtaining any necessary approvals from the appropriate authorities. The user of these drawings and data is also responsible for obtaining any necessary approvals from the appropriate authorities.

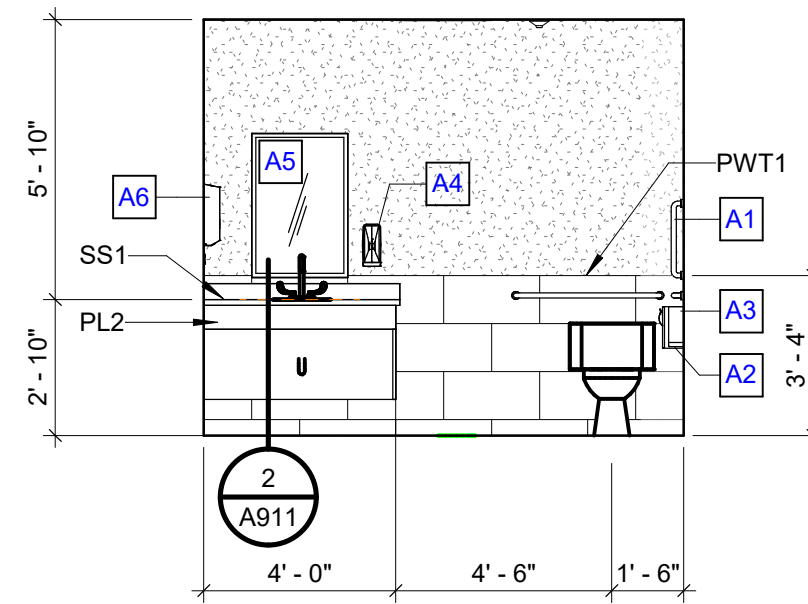
McMAHON ASSOCIATES, INC. provides the engineering and design services shown on these drawings and data, regardless of form, content, or use. The user of these drawings and data is responsible for obtaining appropriate permits and for verifying the accuracy of the information shown on these drawings and data. The user of these drawings and data is also responsible for obtaining any necessary approvals from the appropriate authorities. The user of these drawings and data is also responsible for obtaining any necessary approvals from the appropriate authorities. The user of these drawings and data is also responsible for obtaining any necessary approvals from the appropriate authorities.

McMAHON ASSOCIATES, INC. provides the engineering and design services shown on these drawings and data, regardless of form, content, or use. The user of these drawings and data is responsible for obtaining appropriate permits and for verifying the accuracy of the information shown on these drawings and data. The user of these drawings and data is also responsible for obtaining any necessary approvals from the appropriate authorities. The user of these drawings and data is also responsible for obtaining any necessary approvals from the appropriate authorities. The user of these drawings and data is also responsible for obtaining any necessary approvals from the appropriate authorities.

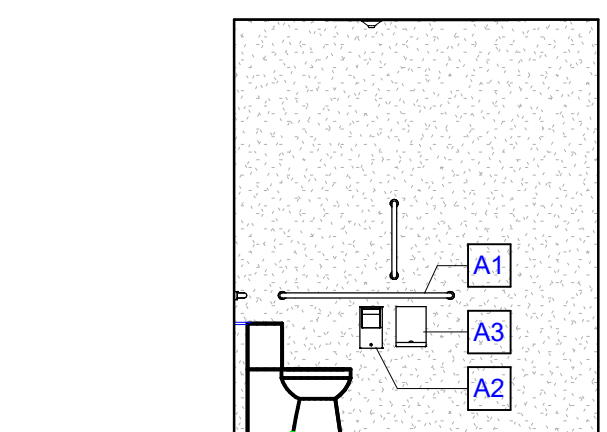
McMAHON ASSOCIATES, INC. provides the engineering and design services shown on these drawings and data, regardless of form, content, or use. The user of these drawings and data is responsible for obtaining appropriate permits and for verifying the accuracy of the information shown on these drawings and data. The user of these drawings and data is also responsible for obtaining any necessary approvals from the appropriate authorities. The user of these drawings and data is also responsible for obtaining any necessary approvals from the appropriate authorities. The user of these drawings and data is also responsible for obtaining any necessary approvals from the appropriate authorities.



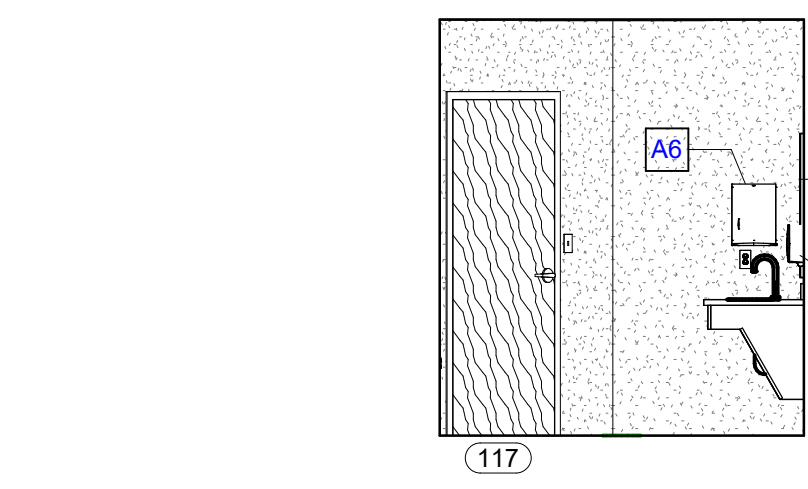
1 ENLARGED PUBLIC RESTROOM A411 1/4" = 1'-0"



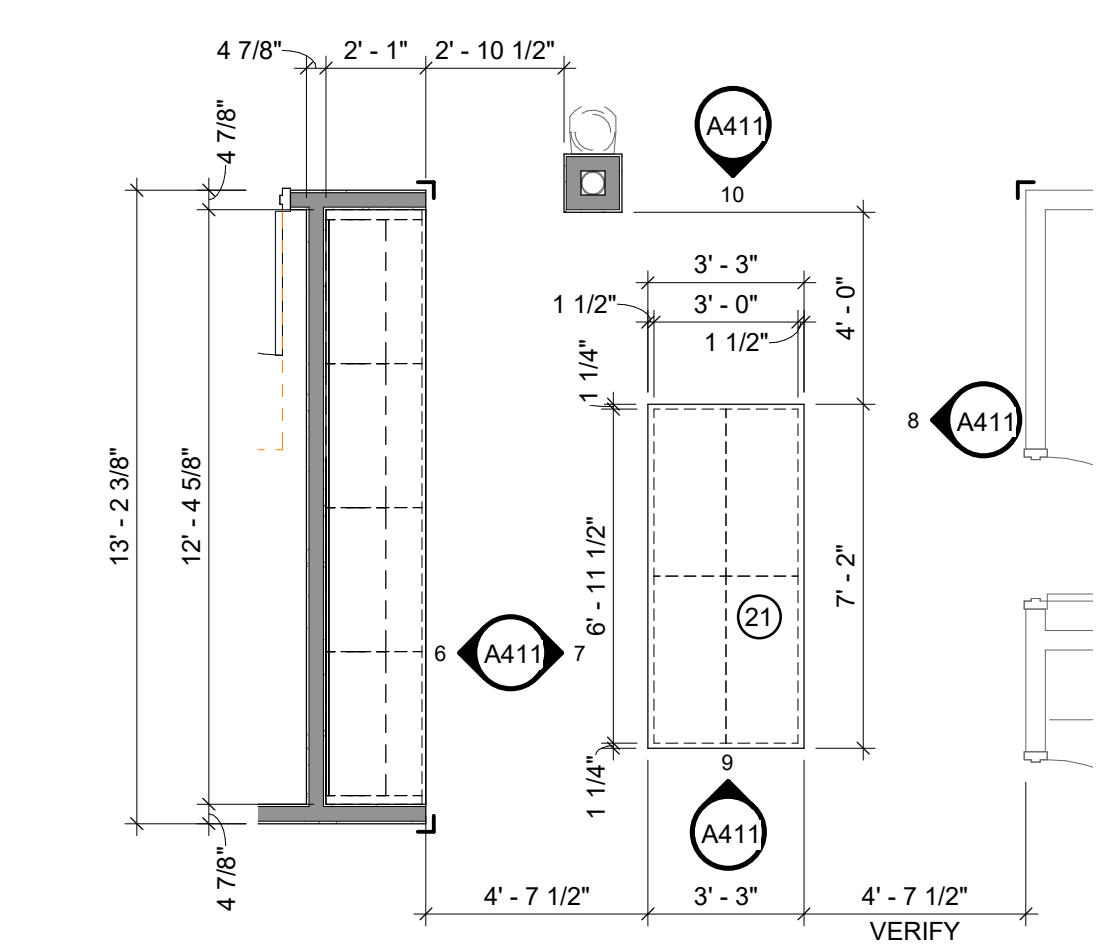
2 PUBLIC RESTROOM A411 1/4" = 1'-0"



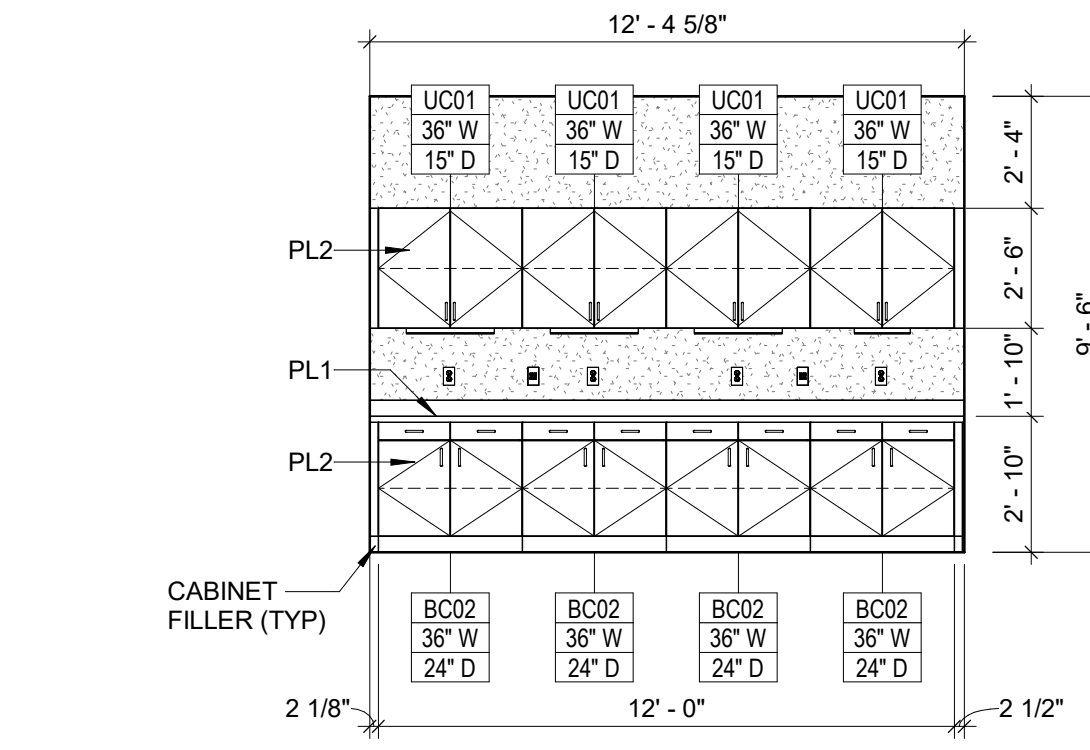
3 PUBLIC RESTROOM A411 1/4" = 1'-0"



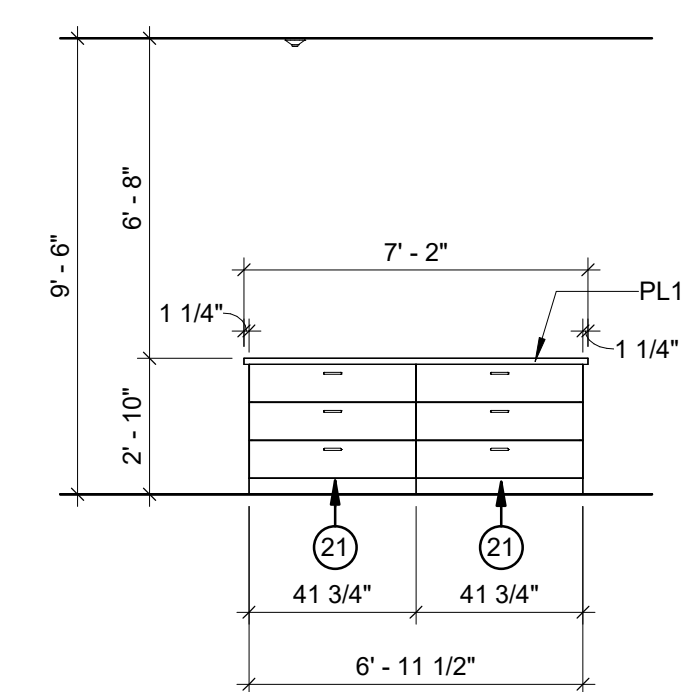
4 PUBLIC RESTROOM A411 1/4" = 1'-0"



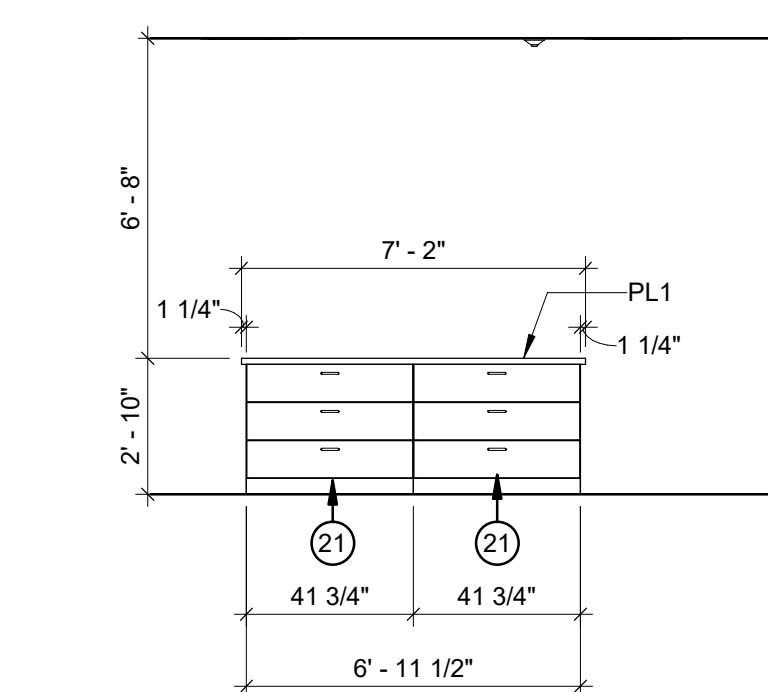
5 ENLARGED COLLAB AREA A411 1/4" = 1'-0"



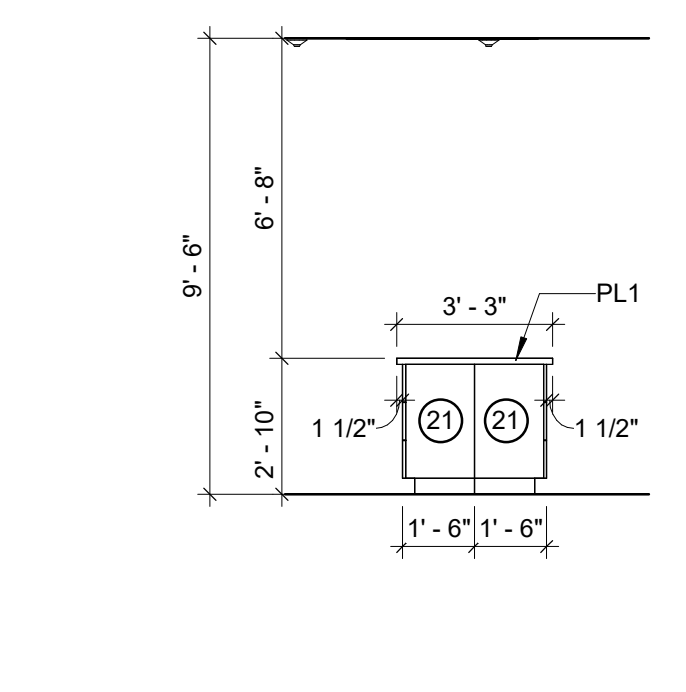
6 COLLAB ELEVATION A411 1/4" = 1'-0"



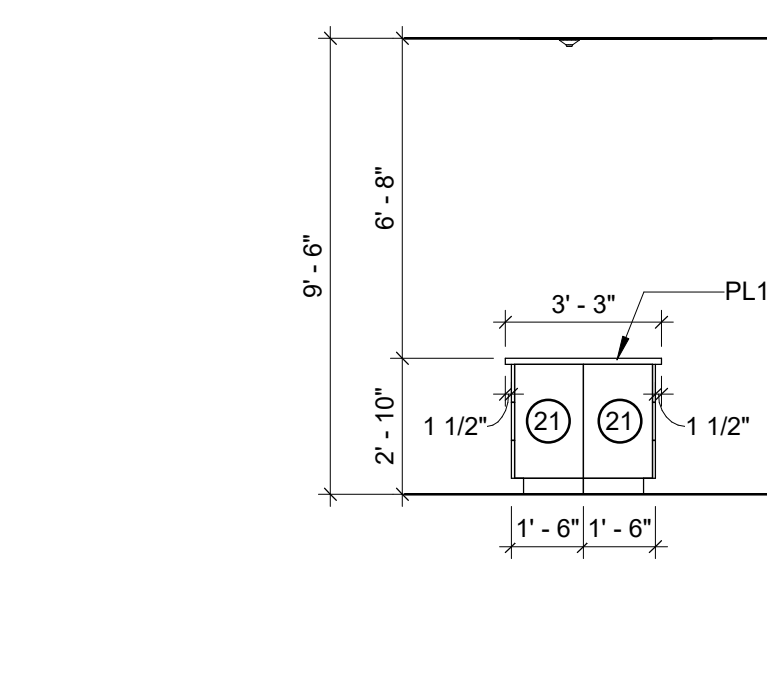
7 COLLAB ELEVATION A411 1/4" = 1'-0"



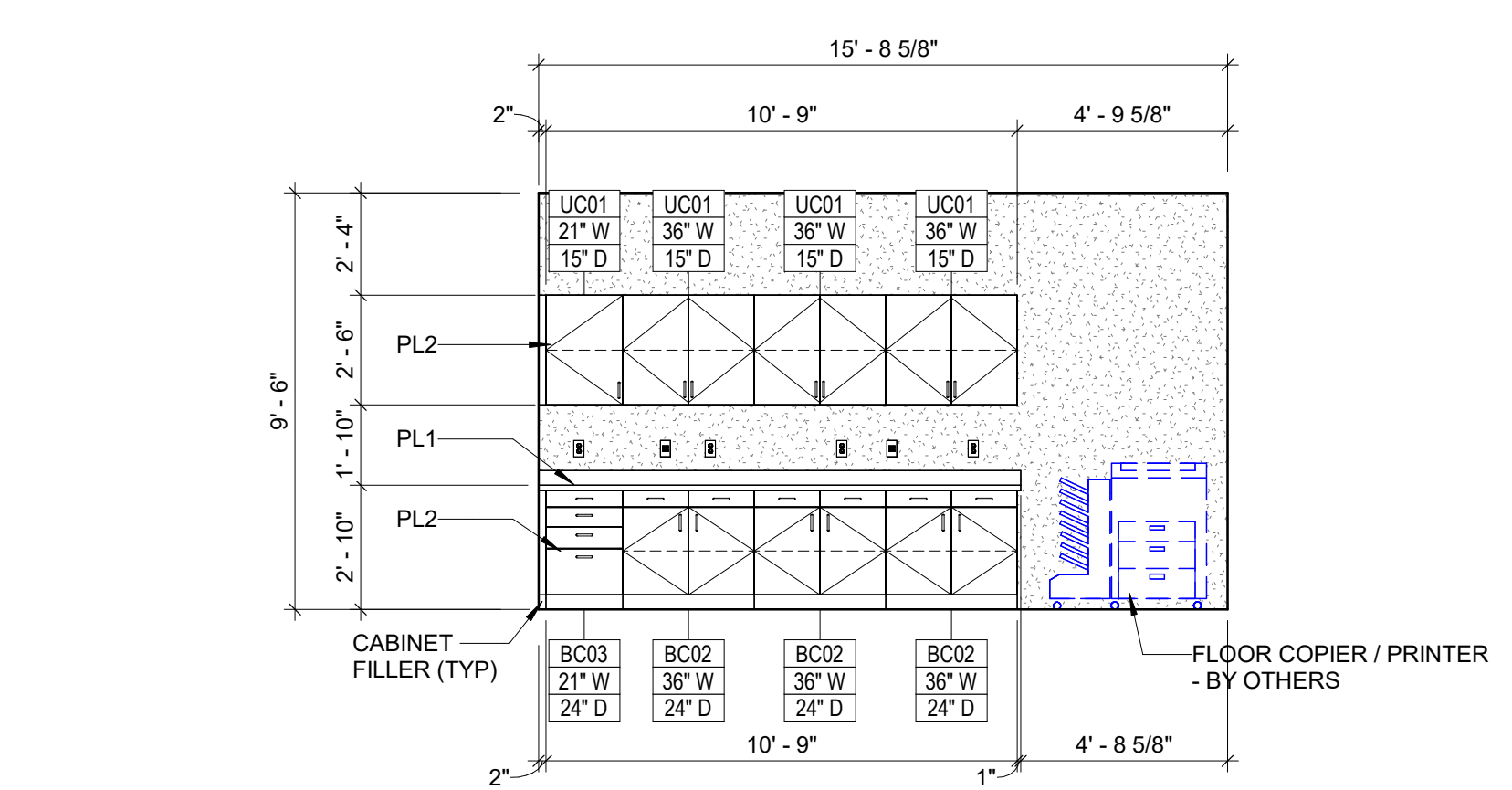
8 COLLAB ELEVATION A411 1/4" = 1'-0"



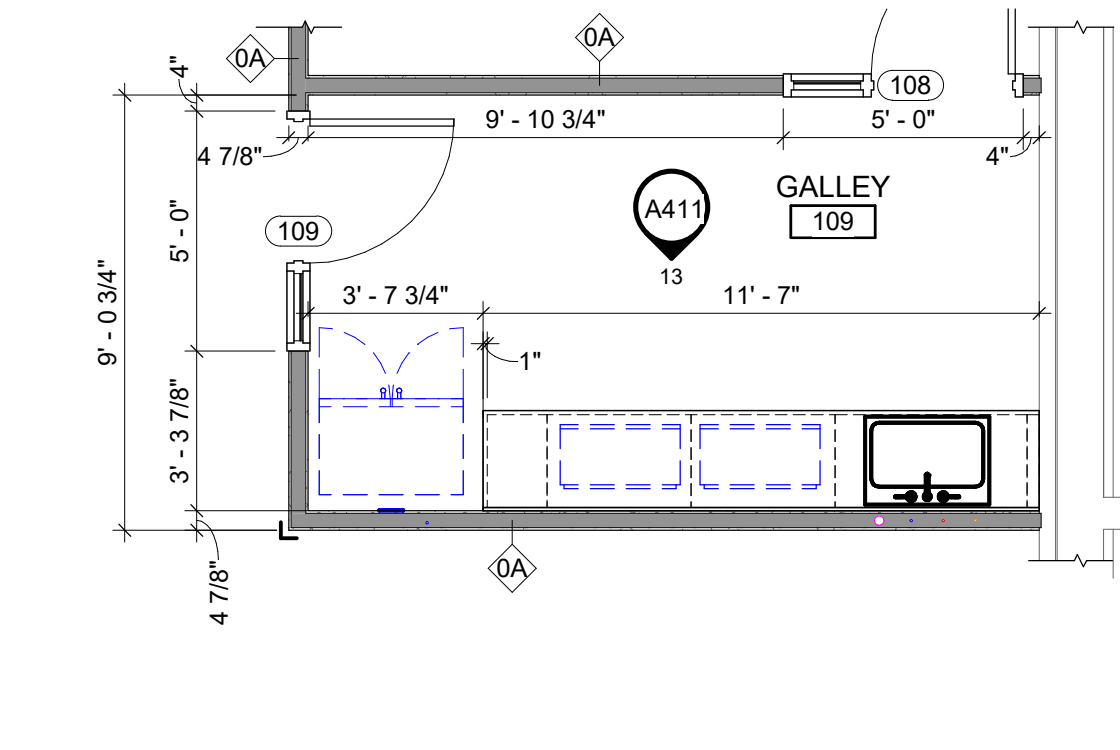
9 COLLAB ELEVATION A411 1/4" = 1'-0"



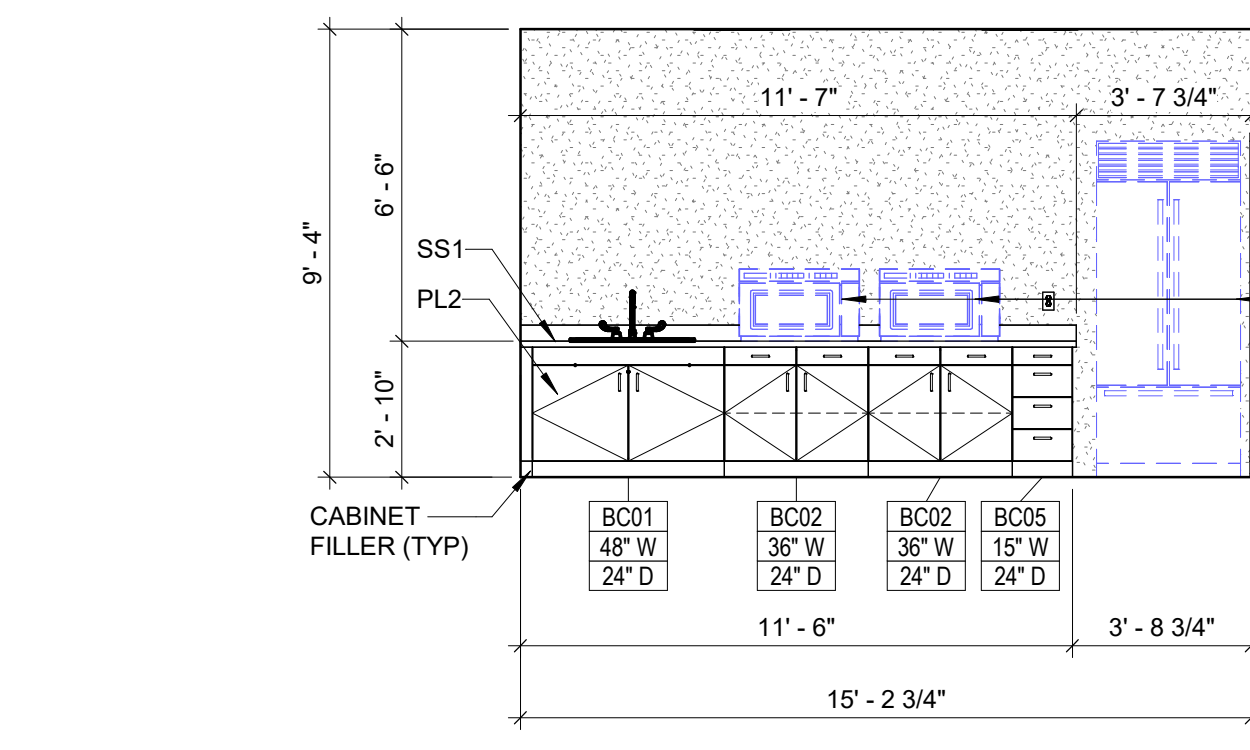
10 COLLAB ELEVATION A411 1/4" = 1'-0"



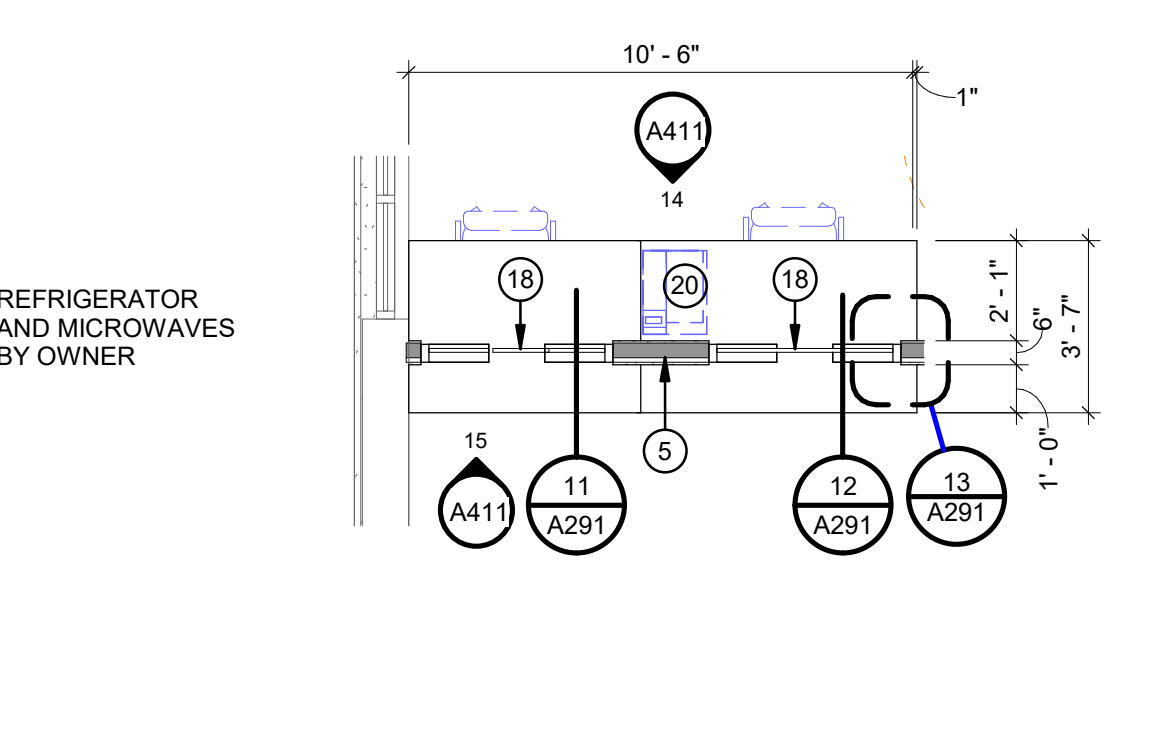
11 OPEN OFFICE ELEVATION A411 1/4" = 1'-0"



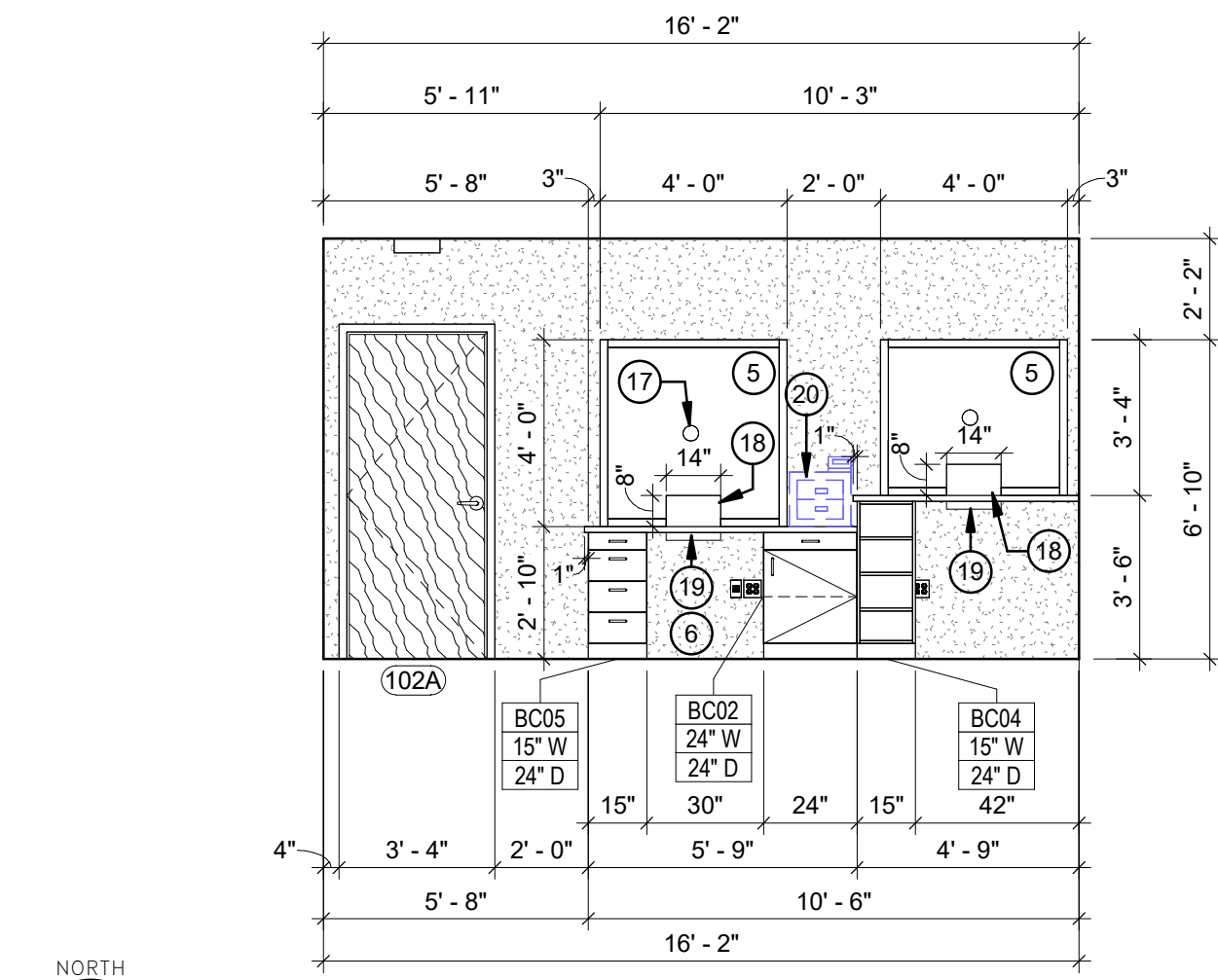
12 ENLARGED GALLEY KITCHEN A411 1/4" = 1'-0"



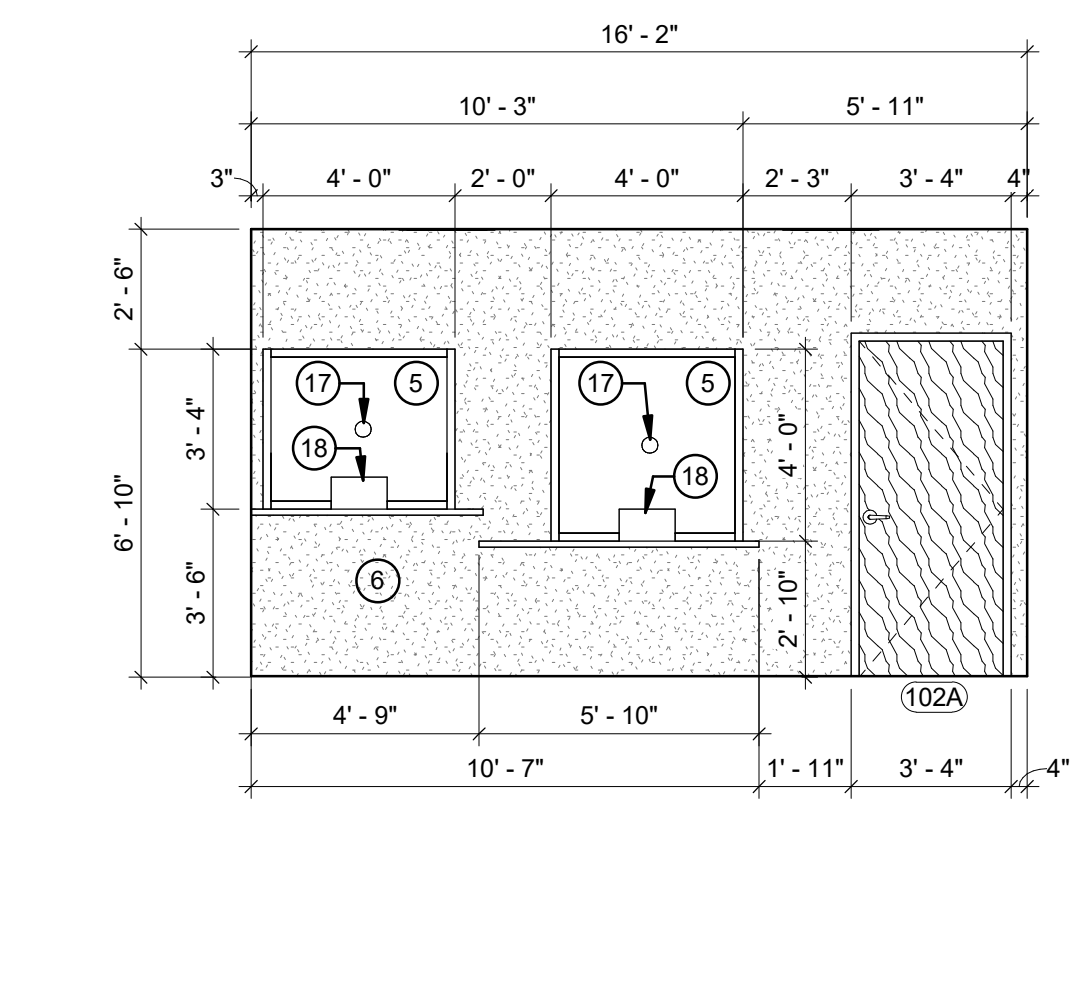
13 GALLEY KITCHEN ELEVATION A411 1/4" = 1'-0"



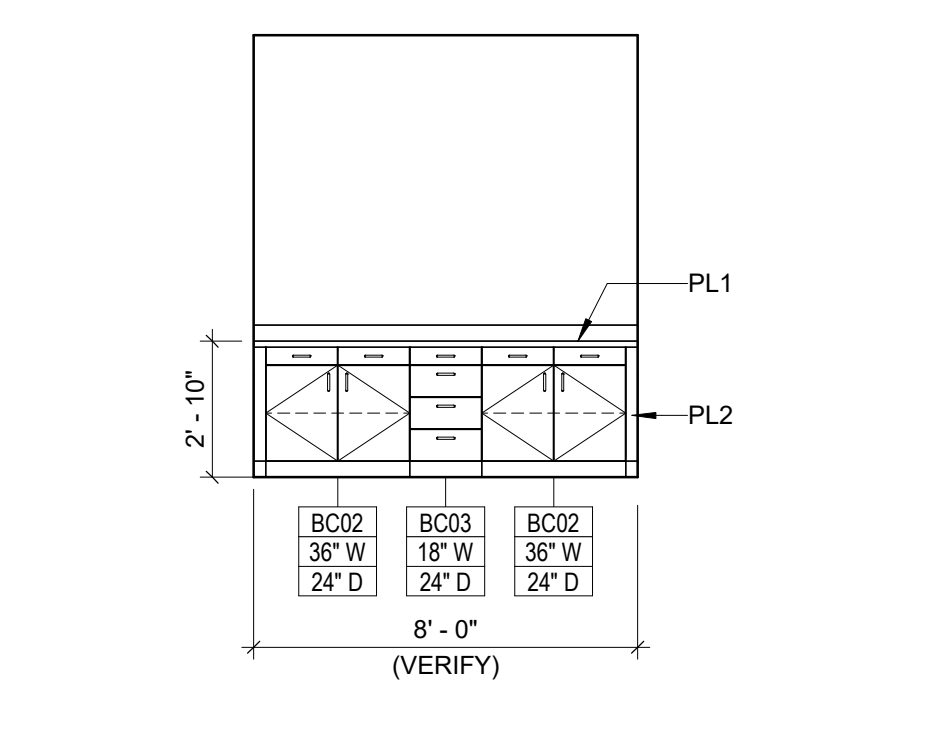
17 LOBBY DESK ENLARGED PLAN A411 1/4" = 1'-0"



14 FRONT DESK ELEVATION A411 1/4" = 1'-0"



15 LOBBY ELEVATION A411 1/4" = 1'-0"



16 EVIDENCE ROOM ELEVATION A411 1/4" = 1'-0"

PRELIMINARY NOT FOR CONSTRUCTION

OFFICE RENOVATION FOR:
VILLAGE OF HARRISON W5298 STATE RD. 114, HARRISON, WI 54952
 ENLARGED PLANS & ELEVATIONS