



The World Leader In Engine Exhaust Removal
Systems for the Fire and EMS Industry

PROPOSAL – AIRVAC 911® Multi-Directional (Horizontal & Vertical) Air Flow Exhaust Removal System

THE SALE OF AIRVAC 911®, ENGINE EXHAUST AIR FILTRATION SYSTEM, BY AIR VACUUM CORPORATION OF DOVER N.H., FOR REMOVAL OF HAZARDOUS EMISSIONS FROM FIRE, RESCUE, TRUCKING, AND OTHER HEAVY EQUIPMENT FLOOR AREAS.

THIS QUOTATION HAS BEEN PREPARED FOR: 2/19/2026



Harrison Village FRS #70
MANITOWOC RD
Harrison, WI 54129

SPECIFICATIONS

MODEL: AIRVAC 911®, VERTICAL AIR FLOW DESIGN, CEILING HUNG, RE-CIRCULATING AIR FILTRATION SYSTEM. MANUFACTURED BY: AIR VACUUM CORPORATION, 32 NADEAU DRIVE, ROCHESTER NH 03867.

FILTRATION: “4-STAGE” FILTER PACK. ALL FILTERS ARE INDUSTRY STANDARD SIZED, UL TESTED & CERTIFIED.

PRE-FILTER (STAGE 1): 24" X 24" X 1". 3-PLY POLYESTER CONSTRUCTION. TWO LAYERS OF 16/40 DUAL DENIER POLY FIBERS WITH A FINAL DUST CATCHING ADHESIVE LAYER. SELF-SEALING FILTER WITH PRE-INSTALLED INTERNAL HEAVY GAGE WIRE FRAME. MERV 8. PERFORMANCE BASED ON A.S.H.R.A.E. 52.1-1992 TEST METHOD. CLASSIFIED AS A UL CLASS 2 FILTER, ACCORDING TO UL STANDARD 900 AND CAN 4-S111.

MAIN MEDIA FILTER (STAGE 2): 24" X 24" X 6". “HEPA MAX 3000” HIGH EFFICIENCY PARTICULATE AIR FILTER. DOP TESTED WITH 0.3 MICROMETER SIZED PARTICLES TO HAVE A **MINIMUM EFFICIENCY OF UP TO 95% AND EXCEEDS THE MAXIMUM EFFICIENCY OF 98% ASHRAE 52.1 TESTED FILTERS**. CONSIST OF A PLEATED MEDIA PACK ENCLOSED WITHIN A GALVANIZED STEEL FRAME ASSEMBLY. ULTRA-FINE FIBERGLASS MEDIA FORMED IN A SERIES OF PLEATS SEPARATED BY CORRUGATED ALUMINUM DIVIDERS TO MAINTAIN UNIFORM SPACING BETWEEN EACH PLEAT FOR OPTIMAL AIRFLOW. CLASSIFIED CLASS 2 ACCORDING TO U.L. STANDARD 900 AND IS CLASSIFIED MERV 16 IN ACCORDANCE WITH ASHRAE STANDARD 52.2. FOR INSTALLATION SAFETY, TOTAL WEIGHT NOT TO EXCEED 16 LBS.

GAS-PHASE EXTRACTOR (STAGES 3&4): ONE 24" X 24" X 4", “MULTISORB 3000” BLENDED GAS PHASE EXTRACTOR. 50/50 RESPIRATOR GRADE ACTIVATED CARBON GRANULES EFFECT FOR REMOVAL OF HIGH WEIGHT MOLECULAR GASES WITHIN DIESEL EXHAUST (VOC’S, HYDROCARBONS, BENZENE, OCTANE, METHANOL AND MORE) AND POTASSIUM PERMANGANATE FOR REMOVAL OF LIGHT WEIGHT MOLECULAR GASES (SULFUR DIOXIDE, NITROGEN DIOXIDE, FORMALDEHYDE AND MORE). FILTER IS CONSTRUCTED WITHIN A 24ga METAL FRAME WITH INTERNAL “HONEYCOMB” CONTAINMENT STRUCTURE. 50/50 BLEND EQUATES TO 28+/- LBS OF CARBON. FOR INSTALLATION SAFETY, TOTAL WEIGHT NOT TO EXCEED 30 LBS.

CABINET CONSTRUCTION: 18 & 16 GAUGE, ALL WELDED STEEL CONSTRUCTION. 25" X 26" X 28" CUSTOM GRAY POWDER COAT PAINT FINISH. **TWO HINGED ACCESS PANELS:** ONE, TO THE FILTER BANK AND THE OTHER TO THE MOTOR/BLOWER UNIT. A “DWYER” MAGNEHELIC STATIC PRESSURE GAGE, ALLOWS USER TO VISUALLY CHECK ON THE STATUS OF THE FILTER BANK. **FOUR HORIZONTAL & ADJUSTABLE AIRFLOW GRILLS.** “QUICK LATCH” FILTER COMPARTMENT WHICH IS CAPABLE OF HOLDING UP TO 15" OF FILTRATION!

ELECTRICAL: THREE PHASE 1 HP - @ 208-230/460 Volt, 3.4-3.6/1.8 F.L. AMPS, THREE PHASE ELECTRIC MOTOR, 13.6 F.L. RESILIENT MOUNT, ELECTRIC MOTOR, RESILIENT MOUNT. ALL MOTORS ARE UL APPROVED.

BLOWER: CONTINENTAL CENTRIFUGAL IMPELLER AND FUNNEL CONE. NON-METAL & CHEMICALLY RESISTANT.

AVEC CONTROL PANEL: UL 508 CERTIFIED CUSTOM “AUTOMATIC VEHICLE EXHAUST CONTROL”, MULTI-CIRCUIT AUTOMATIC RESET TIMER CONTROL. TWO CIRCUIT CONFIGURATIONS RATED AT 20 AMPS PER. TIMING RANGE OF .1 TO 120 MIN. ENCLOSED WITHIN A NEMA-4 RATED ENCLOSURE, NECESSARY FOR APPLICATIONS WHERE WATER IS PRESENT (WASHING OF VEHICLES). MANUAL THREE POSITION SWITCH FOR: AUTO MODE, SYSTEM OFF & SYSTEM RUN OVERRIDE. LED “OPERATING” LIGHT.

AUTOMATIC ACTIVATION SWITCHES: (SEE ENCLOSURES) PHOTO ELECTRIC EYES ACTIVATE SYSTEM UPON VEHICLE MOVEMENT (OUTDOOR RANGES OF UP TO 200’) AND MAGNETIC DOOR SWITCHES (ONE PER OVERHEAD DOOR).



The World Leader In Engine Exhaust Removal Systems for the Fire and EMS Industry

PRICE QUOTATION – 6 bay drive thru 021926

Harrison Village FRS #70
 MANITOWOC RD,
 Harrison, WI 54129

DATE: 2/19/2026
 PHONE:
 FAX:

DESCRIPTION	QUANTITY	UNIT COST	TOTALS
AIRVAC 911® EXHAUST REMOVAL SYSTEM -	15	\$4,695.00	\$70,425.00
ADDER - 230 V 3PHASE	15	\$215.00	\$3,225.00
*AIRVAC 911® FILTER PACK (4-Stage Filter Pack, "Main Filters")	15	\$533.00	\$7,995.00
AIRVAC 911® FILTER GAUGE (Min. one per building section)	2	\$160.00	\$320.00
UL 508A CERTIFIED CONTROL PANEL - AVEC-5C-2Z (Zoned 9&6)	1	\$4,442.00	\$4,442.00
ACTIVATION PACKAGE - E-960-D90Q PHOTO EYE (set) &	6	\$334.00	\$2,004.00
N505AUTM/STX01 (2") TRACK MOUNTED DOOR SWITCH	12	\$61.00	\$732.00
PREFILTERS (12 Per Box/Change date est. indicated below)	2	\$138.00	\$276.00
*ESTIMATED SHIPPING AND HANDLING	15	\$275.00	\$4,125.00
			\$93,544.00

*"Non-Schedule Item"

MADE IN THE USA

- ◆ *FREIGHT: FOB Origin*, ◆ **TERMS: 1/2 Payment with the order & final payment prior to release.** ◆ *Lead-Time 10 to 16 weeks.*
- ◆ Buyer is responsible for obtaining all permits, permit fees, State/local licensing fees and applicable taxes related to the purchase of product, shipping and installation or must provide all necessary tax-exempt certificates; state, local and/or county to Air Vacuum Corporation. ◆ [Please contact your sales rep for installation information and pricing.](#) ◆ Governmental Purchases please consult your sales rep for GSA price list.

The AIRVAC 911™ System is Provided With a FIVE YEAR WARRANTY On ALL Components (excluding consumable filters)

SEE DIAGRAM FOR SUGGESTED AIRVAC 911 UNIT LOCATIONS

Approximate Filter Life Expectancy

Prefilters 2-4 months, Main filters 12 to 24 months.

This quotation has been prepared By: Thomas J. Vitko Date: 2/19/2026
Quotation Prices are valid for 60 calendar days from quotation date.

Special 2 Zone 5C

Submittal for 2 Zone 5C Control Panel

Prepared by:

Air Vacuum Corporation

P.O. Box 517

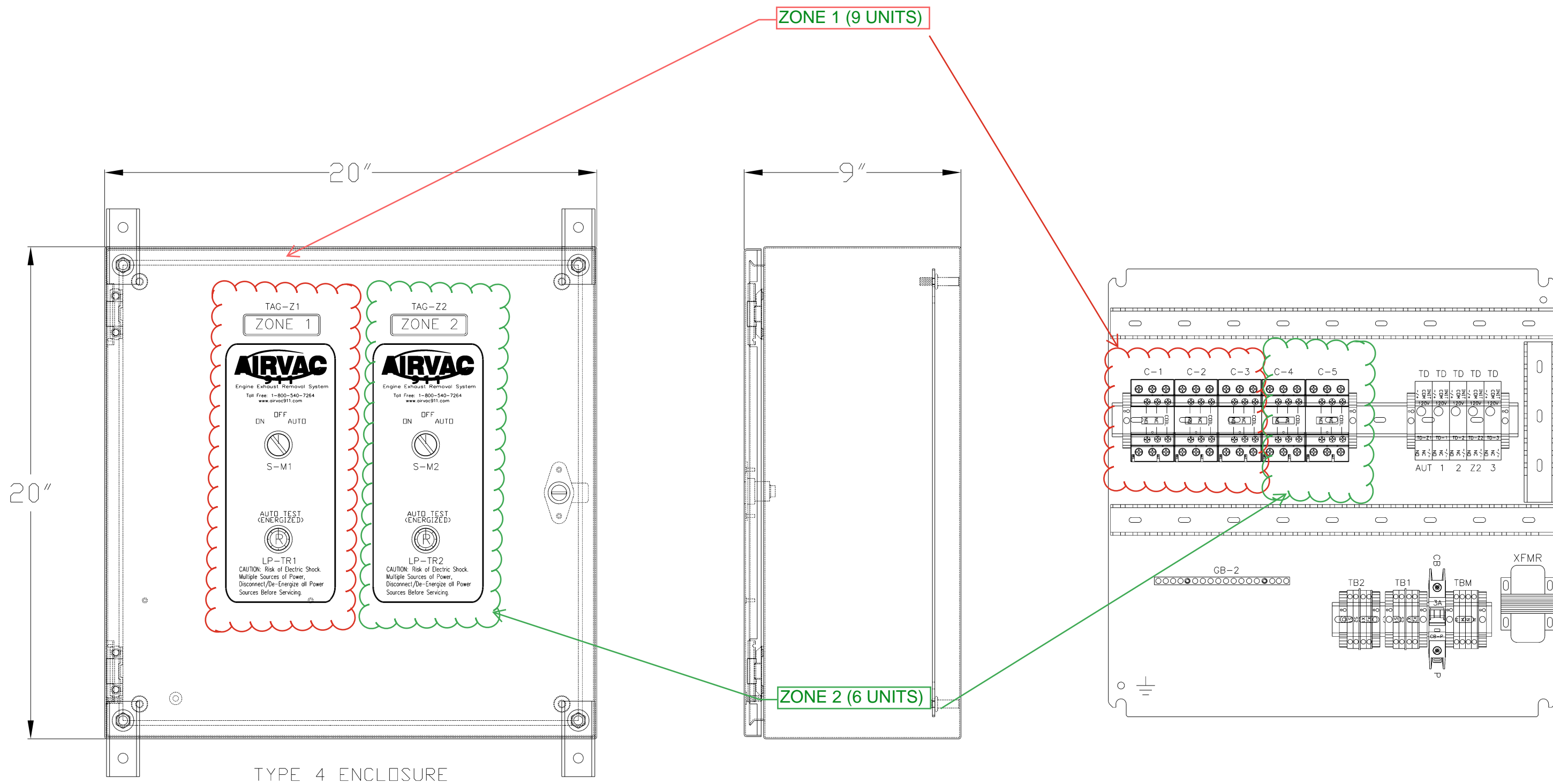
Dover NH 03821-0517

Panel Job: 2026-056

Section D

Drawings

**Enclosure Physical Layout
Electrical Schematics
Field Connections**



ZONE 1 (9 UNITS)

ZONE 2 (6 UNITS)

PANEL TO BE UL LISTED (usUL, cUL)
 INDUSTRIAL CONTROL PANEL
 UL508A FILE NO E109698

REV	DATE	PURPOSE:	BY	CHKD



DESIGNED	RN	DATE	02/2026
DRAWN	RN	DATE	02/2026
CHECKED		DATE	

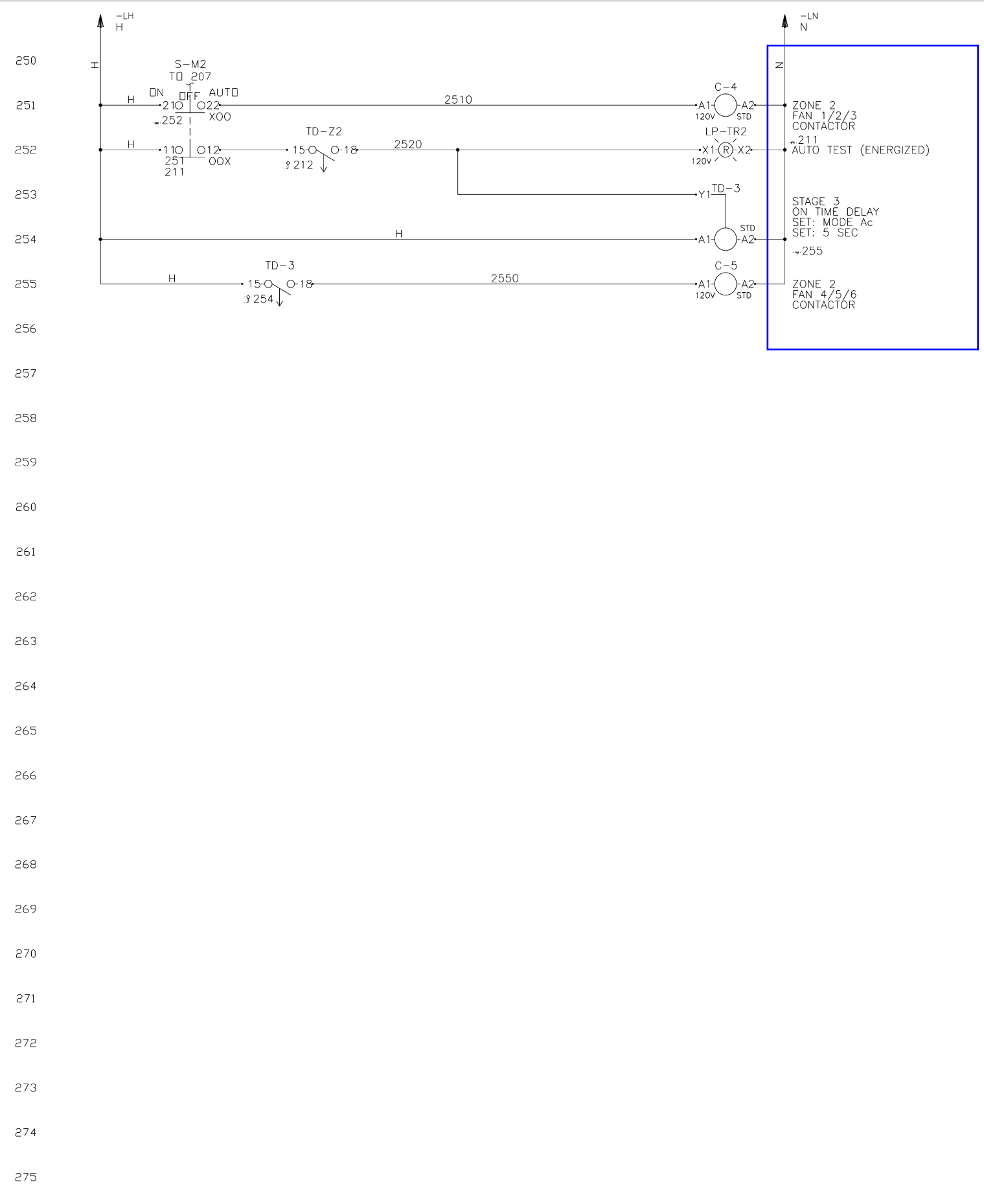
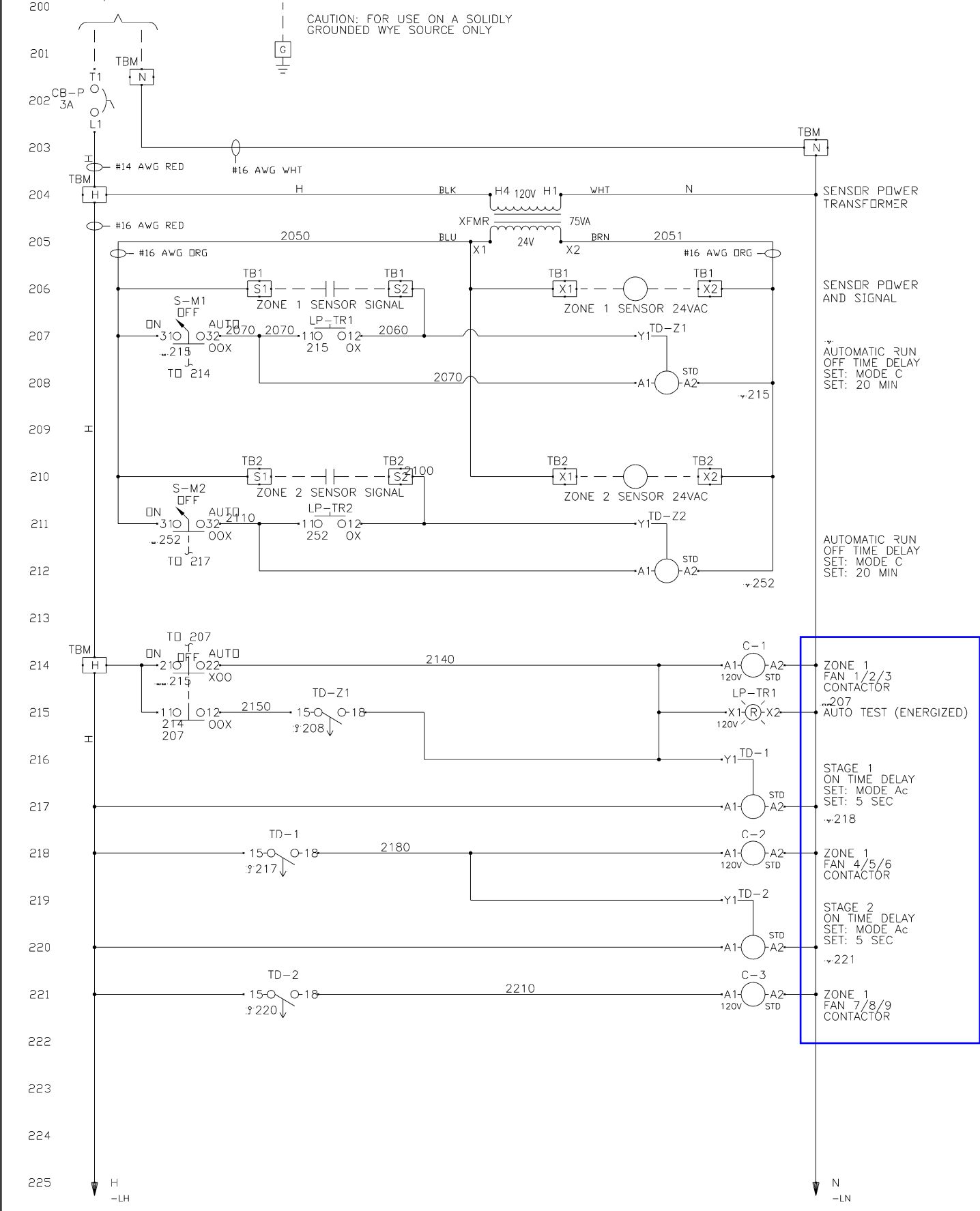
FDR: AIRVAC - SPECIAL 2 ZONE 5C

THIS DRAWING, AND ALL REPRESENTED DATA, ARE THE PROPERTY OF THE NAMED COMPANY IN THE TITLE BLOCK. THIS DRAWING SHALL NOT BE REPRODUCED, COPIED, OR DISCLOSED EXCEPT FOR MAINTENANCE PURPOSES BY THE USING CUSTOMER.

PANEL LAYOUT	2 ZONE AVEC 5C	SHEET: 1 OF 3
	5 CONTACTOR - (10) 1 PH FANS / (15) 3 PH FANS	
DRAWING SET:	2026-056-AVEC-5C 2 ZONE	

CONTROL POWER 120V-1PH 60 Hz 1.5 FLA
SCCR N/A, CONTROLS ONLY

CAUTION: FOR USE ON A SOLIDLY
GROUNDED WYE SOURCE ONLY



REV	DATE	PURPOSE:	BY	CHKD



DESIGNED	RN	DATE	02/2026
DRAWN	RN	DATE	02/2026
CHECKED		DATE	

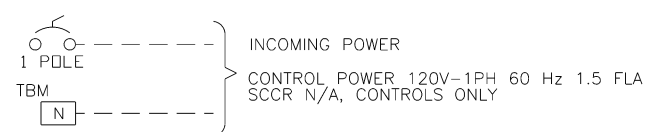
FDR:
AIRVAC - SPECIAL 2 ZONE 5C

THIS DRAWING, AND ALL REPRESENTED DATA, ARE THE PROPERTY OF THE NAMED COMPANY IN THE TITLE BLOCK. THIS DRAWING SHALL NOT BE REPRODUCED, COPIED, OR DISCLOSED EXCEPT FOR MAINTENANCE PURPOSES BY THE USING CUSTOMER.

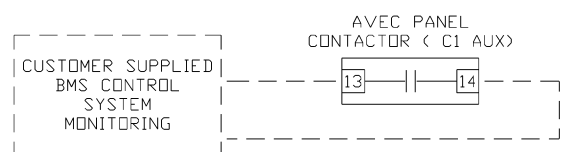
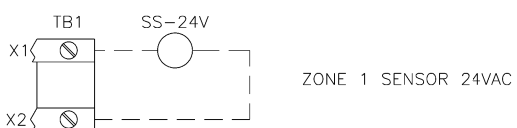
CONTROL SCHEMATIC 2 ZONE AVEC 5C 5 CONTACTOR - (10) 1 PH FANS / (15) 3 PH FANS	
DRAWING SET: 2026-056-AVEC-5C 2 ZONE	SHEET: 2 OF 3

FIELD CONNECTIONS

120V POWER CONNECTIONS

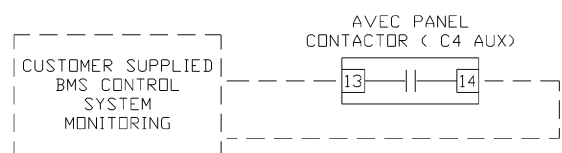
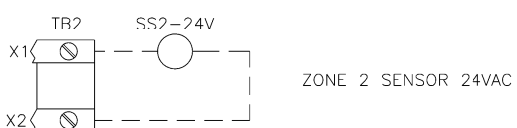


SENSOR CONNECTIONS



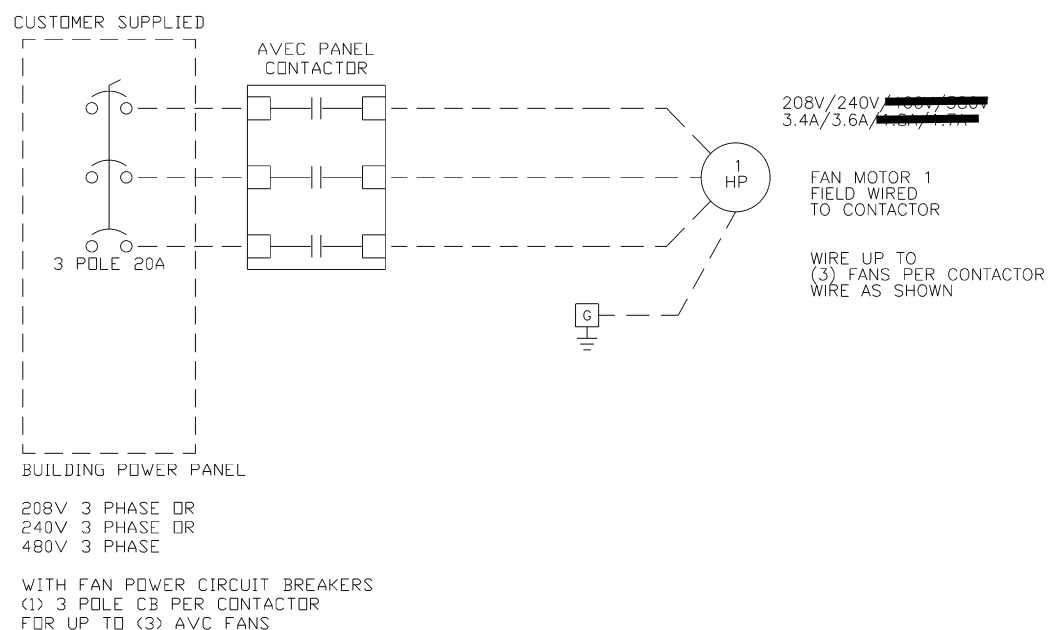
CONTACTOR C1 AUX(13,14)
CLOSES ANYTIME AVEC IS RUNNING

ZONE 2 SENSOR CONNECTIONS

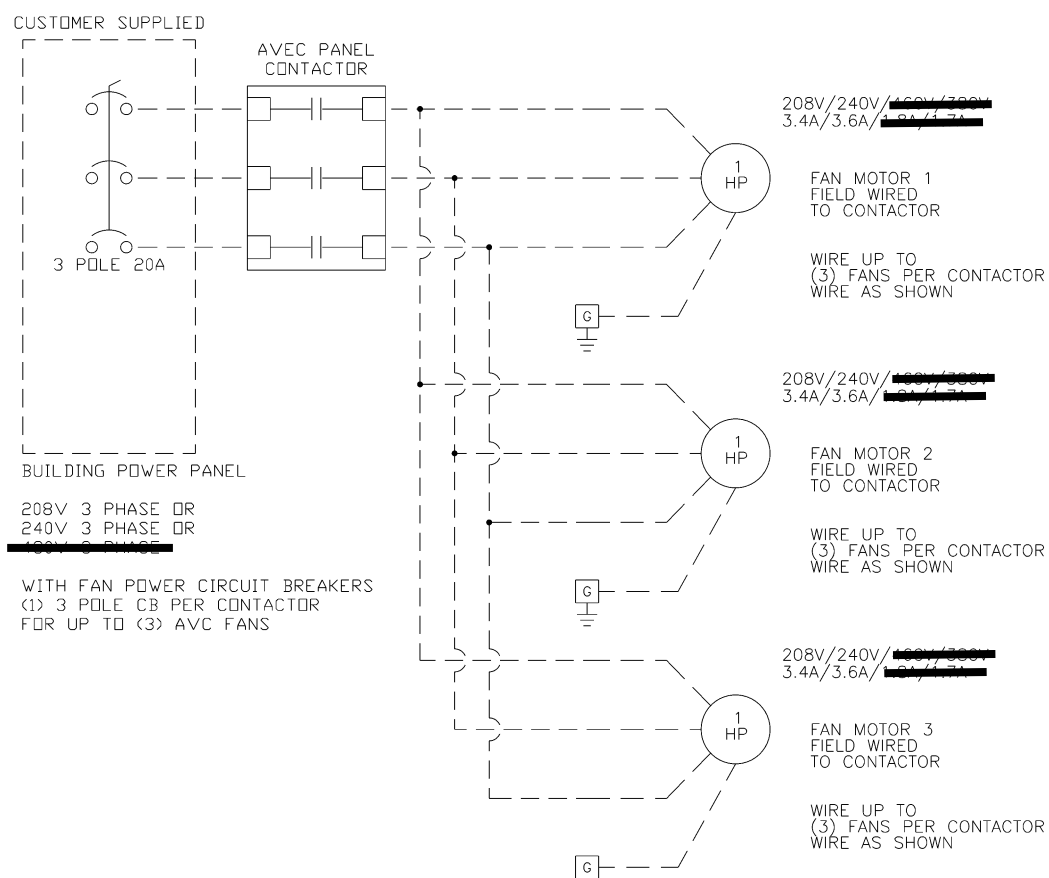


CONTACTOR C4 AUX(13,14)
CLOSES ANYTIME AVEC ZONE 2 IS
RUNNING

3 PHASE 3 WIRE FAN POWER WIRING



3 PHASE 3 WIRE FAN POWER WIRING



NOTES:
1) FAN POWER CIRCUIT PROTECTION
PROVIDED BY OTHERS
2) FAN MOTORS IN CLUDE INTERNAL
MOTOR OVERLOAD PROTECTION

REV	DATE	PURPOSE:	BY	CHKD

AIRVAC
911
Engine Exhaust Removal System
Toll Free: 1-800-540-7264, www.airvac911.com

DESIGNED	DATE	FDR:
RN	02/2026	AIRVAC - SPECIAL 2 ZONE 5C
DRAWN	DATE	
RN	02/2026	
CHECKED	DATE	

THIS DRAWING, AND ALL REPRESENTED DATA, ARE THE PROPERTY OF THE NAMED COMPANY IN THE TITLE BLOCK. THIS DRAWING SHALL NOT BE REPRODUCED, COPIED, OR DISCLOSED EXCEPT FOR MAINTENANCE PURPOSES BY THE USING CUSTOMER.

FIELD CONNECTIONS	
2 ZONE AVEC 5C	
5 CONTACTOR - (10) 1 PH FANS / (15) 3 PH FANS	
DRAWING SET:	SHEET:
2026-056-AVEC-5C 2 ZONE	3 OF 3