

Certified Survey Map No. _____

Part of the Northwest 1/4, Northeast 1/4, Southeast 1/4,
and the Southwest 1/4 of the Northeast 1/4 of
Section 15, Township 20 North, Range 18 East,
Village of Harrison, Calumet County, Wisconsin.



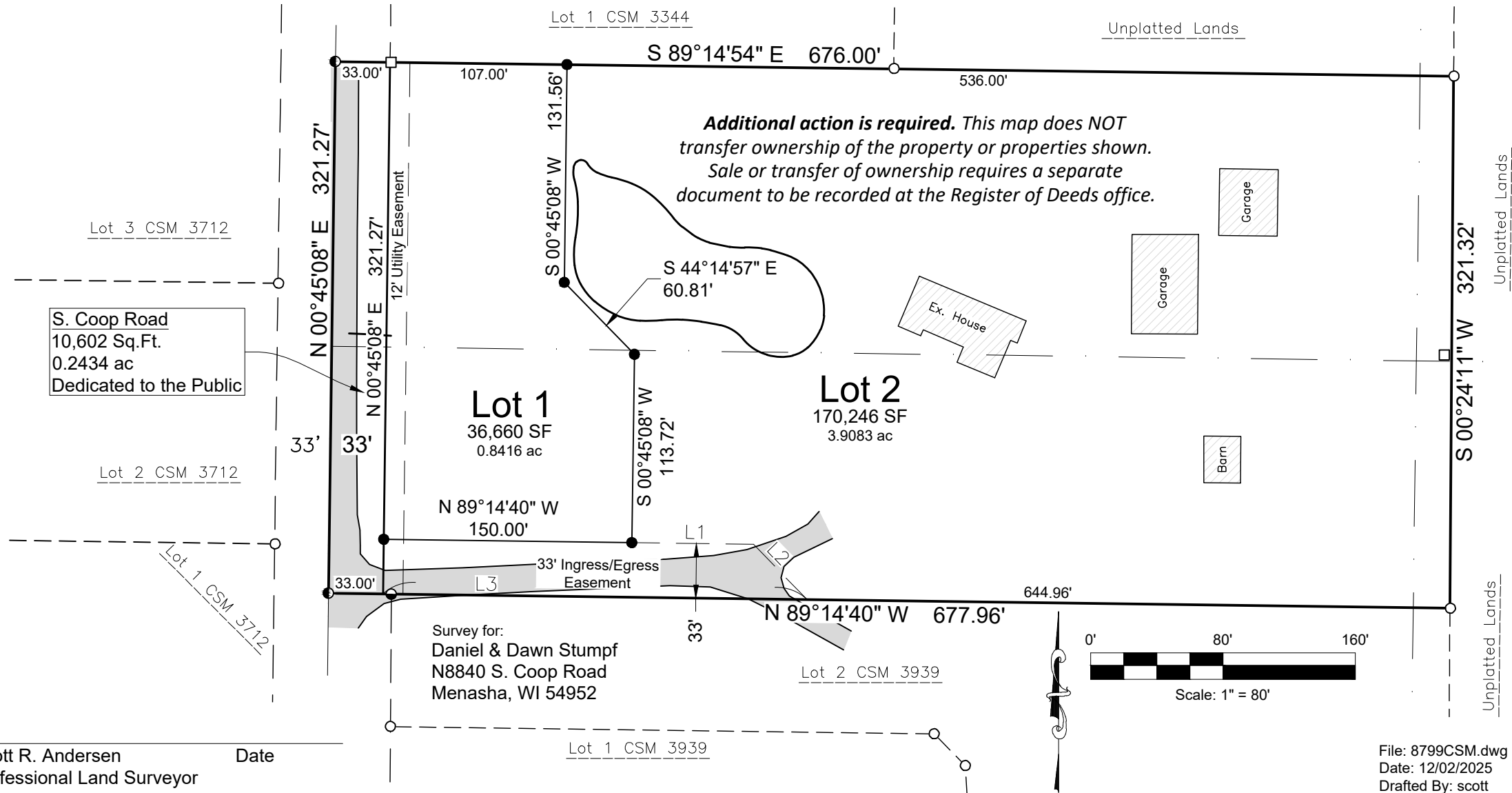
**DAVEL ENGINEERING &
ENVIRONMENTAL, INC.**

Civil Engineers and Land Surveyors

1164 Province Terrace, Menasha, WI 54952

Ph: 920-991-1866

www.davel.pro



Scott R. Andersen
Professional Land Surveyor
No. S-3169

Date

File: 8799CSM.dwg
Date: 12/02/2025
Drafted By: scott
Sheet: 1 of