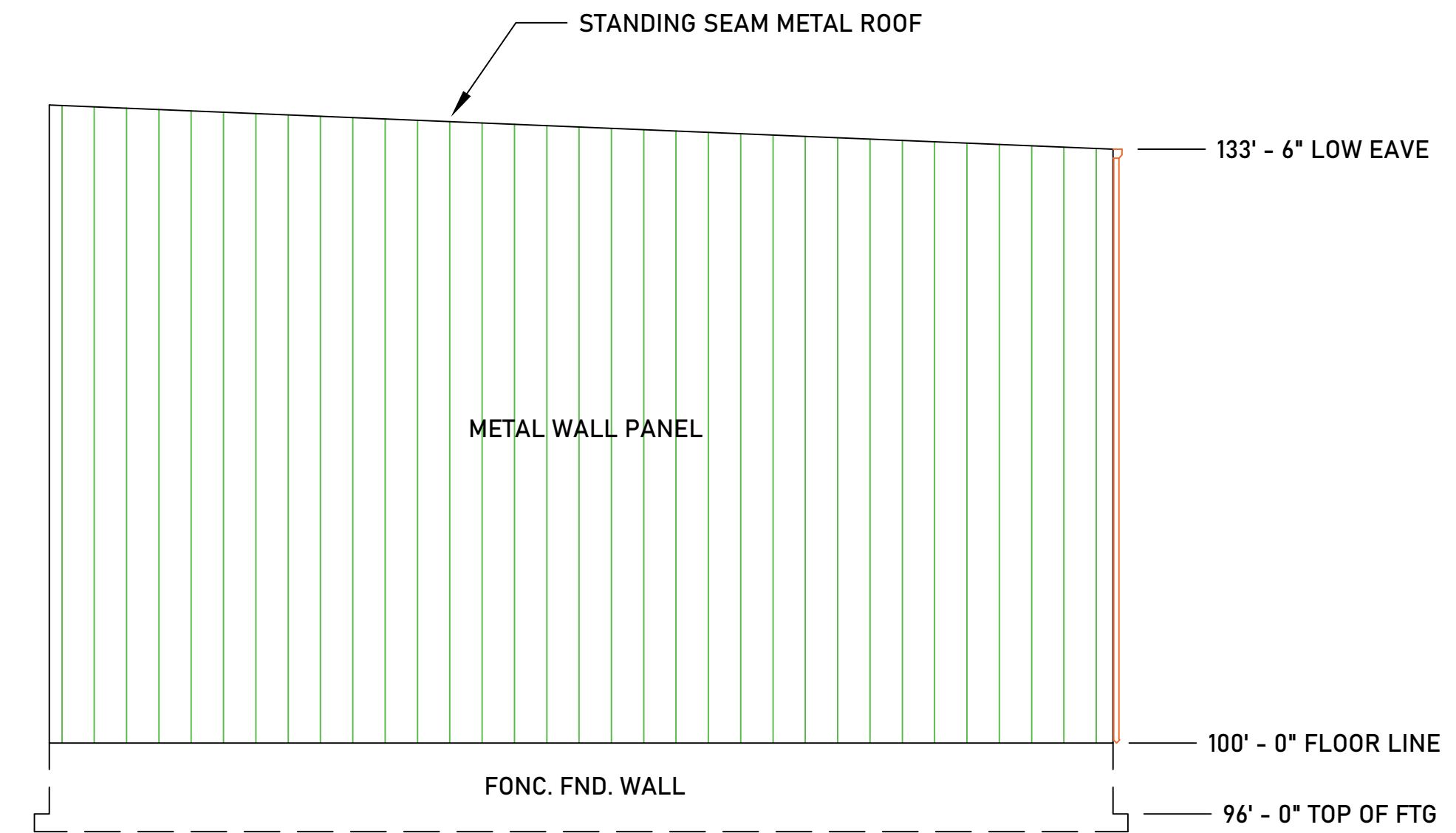
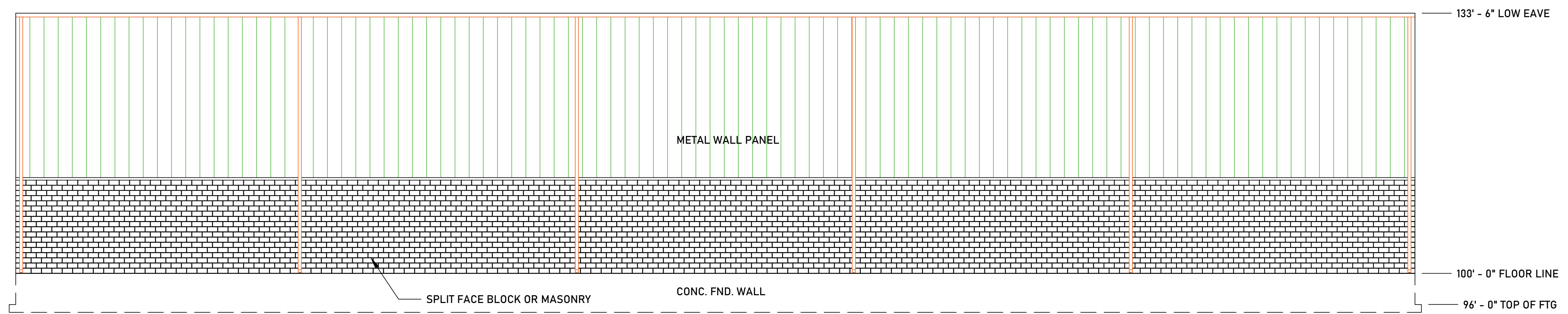


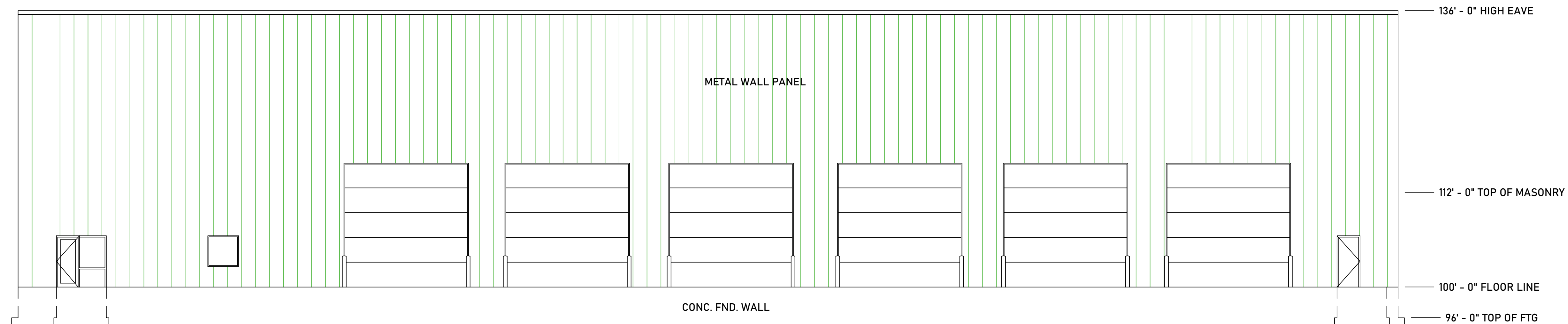
SOUTH ELEVATION
SCALE: 1/8" = 1' - 0"



NORTH ELEVATION
SCALE: 1/8" = 1' - 0"



WEST ELEVATION
SCALE: 1/8" = 1' - 0"



EAST ELEVATION
SCALE: 1/8" = 1' - 0"

Revisions:

Project Number: 1

Issue Date: 08JAN2025

Scale: AS NOTED