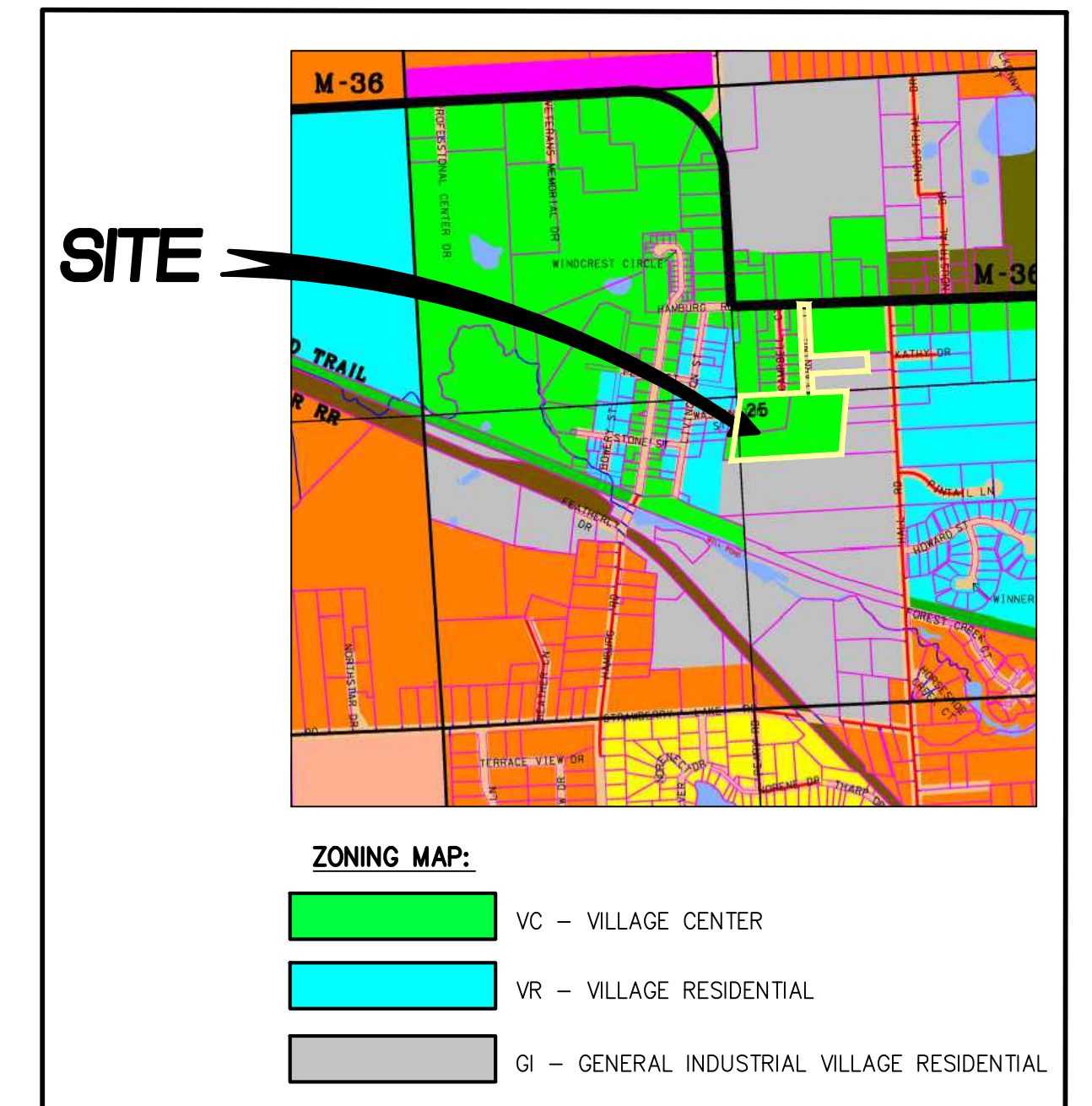
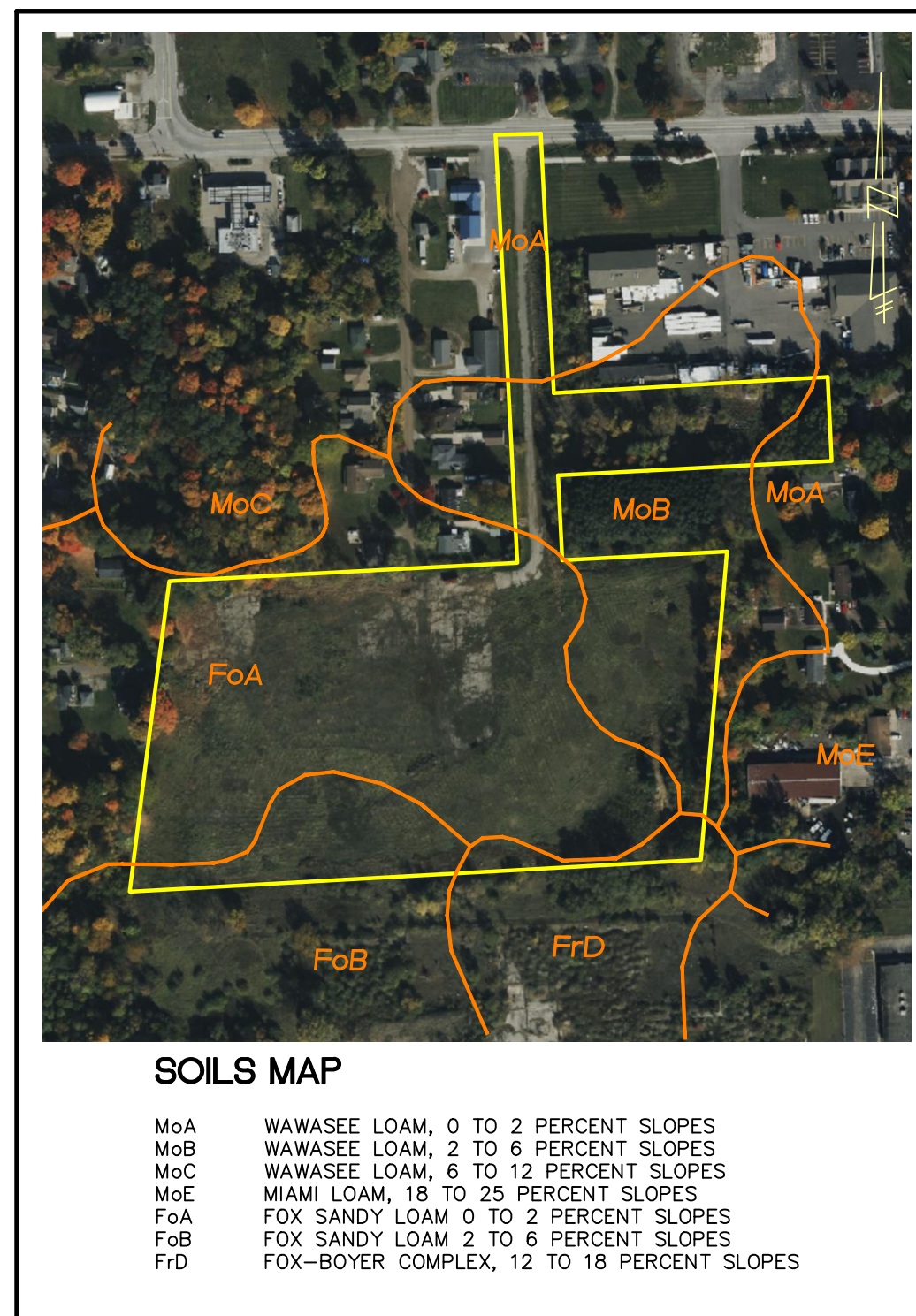


PRELIMINARY SITE PLANS FOR:  
**THE CROSSING AT LAKELANDS TRAIL**

PART OF E. 1/2 OF SECTION 25, TOWN 1 NORTH, RANGE 5 EAST  
 HAMBURG TWP., LIVINGSTON COUNTY, MICHIGAN

PREPARED FOR:  
 ELEVATE LAND HOLDINGS - THE CROSSING  
 128 N. CENTER STREET  
 NORTHVILLE, MICHIGAN 48167  
 248.344.1885



**SHEET INDEX**

**ENGINEERING PLANS:**

- COVER SHEET
- PREVIOUSLY APPROVED OPEN SPACE PLAN
- OVERALL PLAN AND OPEN SPACE PLAN
- UTILITIES PLAN
- GRADING PLAN
- GRADING PLAN
- GRADING PLAN
- STORM WATER MANAGEMENT PLAN

**LANDSCAPE PLANS:**

- LANDSCAPE PLAN
- LANDSCAPE PLAN
- LANDSCAPE PLAN
- LANDSCAPE DETAILS

<b>ARCHITECTURAL PLANS PREPARED BY:</b>	<b>LANDSCAPE PLANS PROVIDED BY:</b>	<b>TOPOGRAPHIC SURVEY PREPARED BY:</b>
TK DESIGN & ASSOCIATES 26030 PONTIAC TRAIL SOUTH LYON, MICHIGAN, 48178 PHONE: 248.446.1960	ALLEN DESIGN 557 CARPENTER NORTHVILLE, MICHIGAN 48167 PHONE: 248.467.4668	M. E. G. A. 298 VETERANS DRIVE FOWLerville, MICHIGAN, 48836 PHONE: 517.223.3512



REVISIONS			ENGINEER'S SEAL
NO.	ITEM	DATE	
1.	PRE-APP SUBMITTAL	4-22-24	
2.	SUBMIT TO HAMBURG TWP.	8-16-24	
3.	SUBMIT TO HAMBURG TWP.	9-25-24	
4.	SUBMIT TO HAMBURG TWP.	10-08-25	
DATE: 1-5-2024		DESIGNED BY: A.A.	JOB NUMBER: 23-239
		CHECKED BY: C.S.	DRAWING FILE: 1-23239-CV.dwg