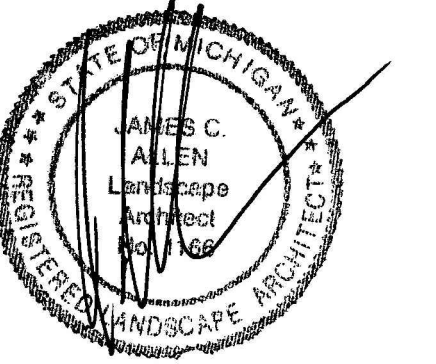


Seal:



Title:

**Landscape Plan**

Project:

**Lakeland Trails**  
 Hamburg Township, Michigan

Prepared for:

Elevate Property Partners, LLC  
 128 North Center  
 Northville, Michigan 48167

Revision:

Review April 11, 2024  
 Revised April 22, 2024  
 Revised August 16, 2024  
 Revised September 25, 2024

Issued:

Job Number:

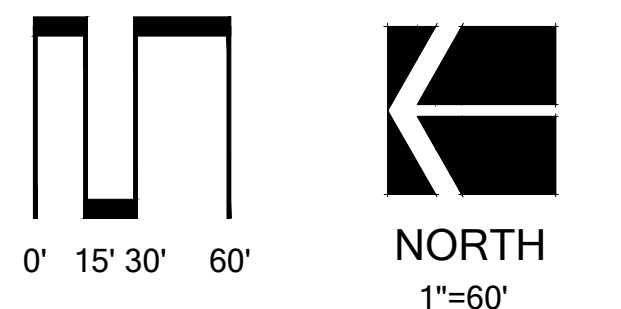
24-019

Drawn By:

jca

Checked By:

jca



Sheet No.

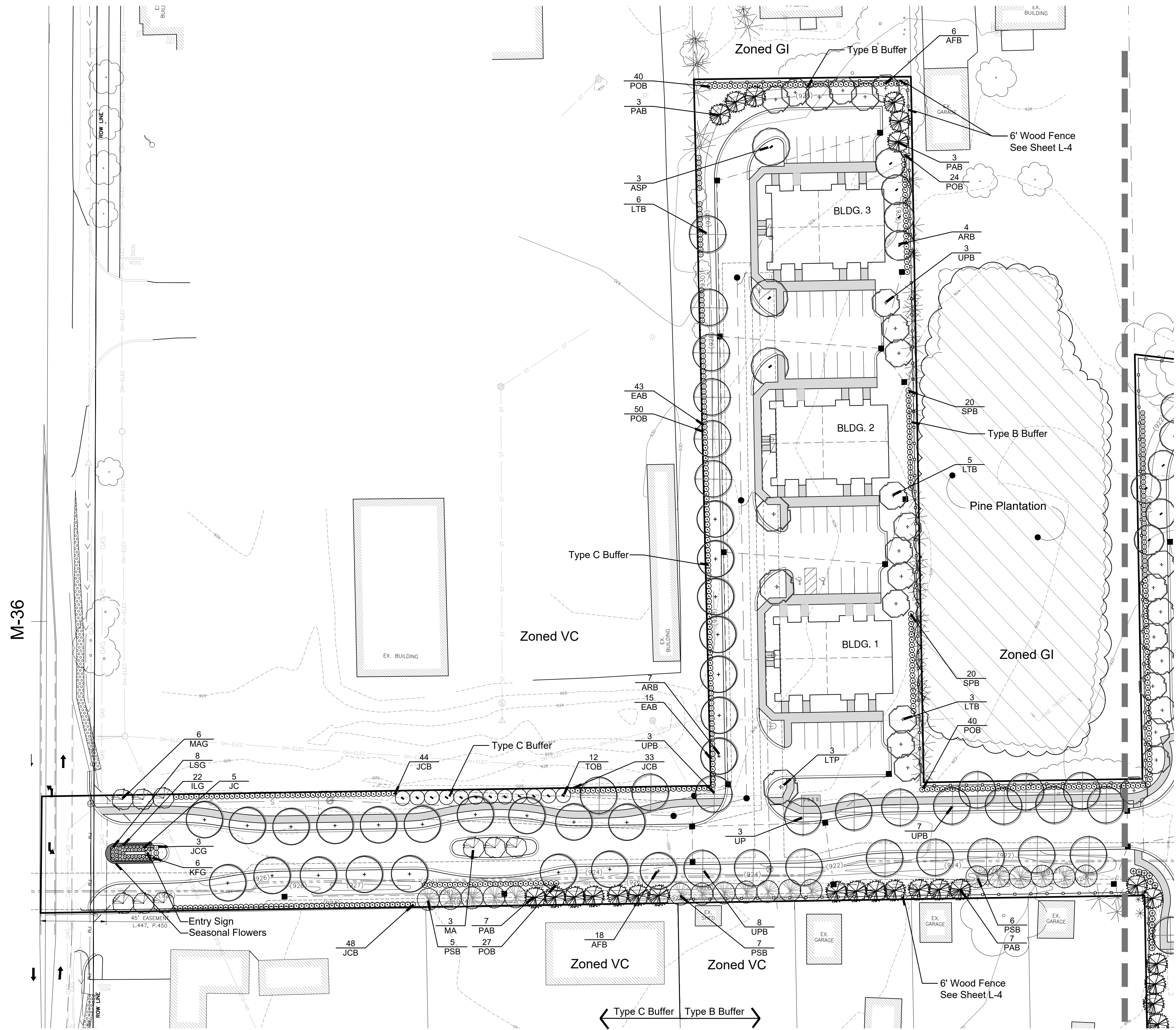
**L-1**

**Landscape Summary - This Sheet**

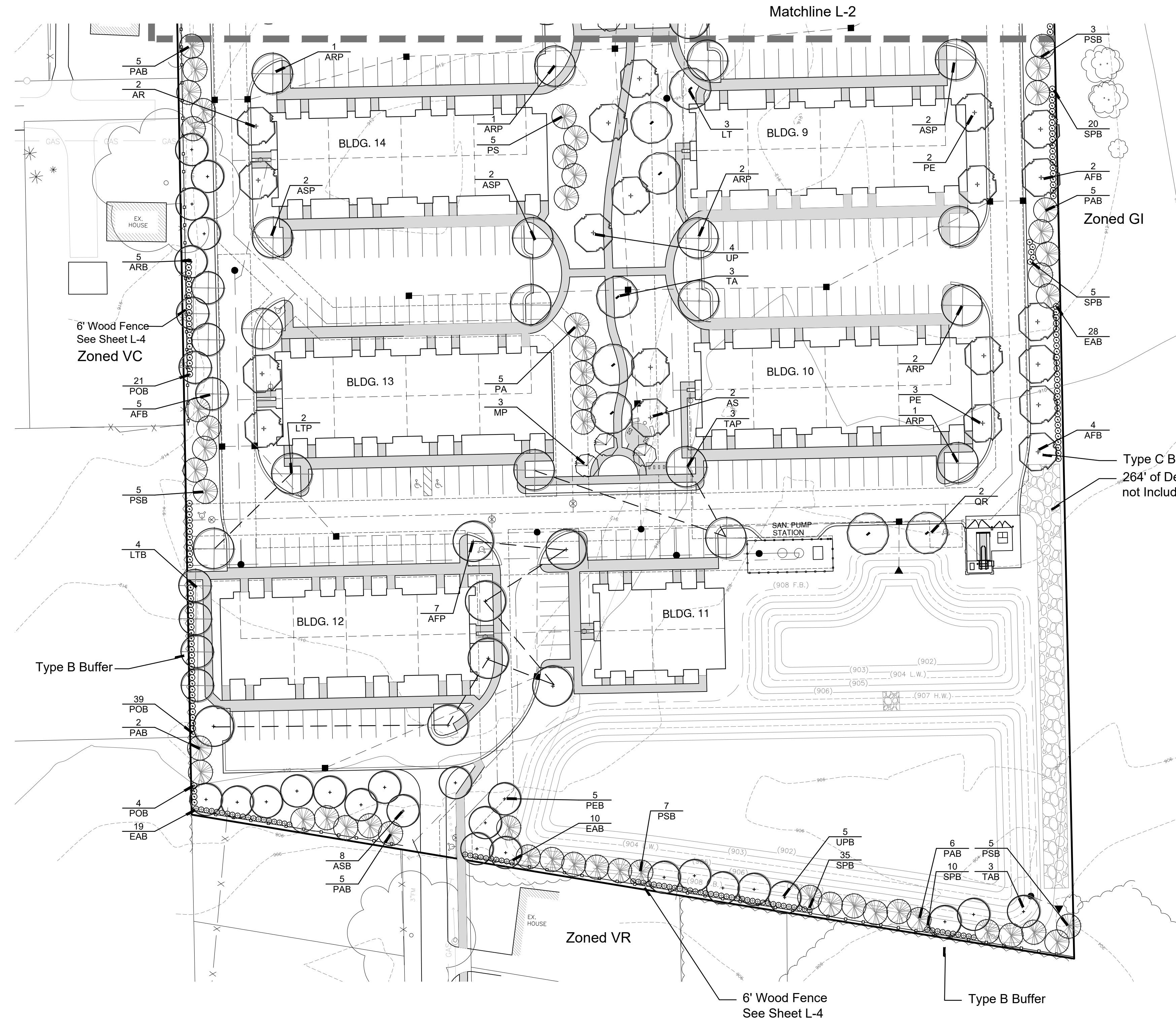
Existing Zoning	GPUD
Greenbelt	
Street Frontage	80 l.f.
Trees Required	2 Trees (80 / 40)
Trees Provided	6 Trees
Shrubs Required	8 Shrubs (80 / 40) x 4
Shrubs Provided	25 Shrubs
Land Use Buffers	
Buffer Length West and North	1,300 l.f. (Type C)
Trees Required	65 Trees (1,300 / 20)
Trees Provided	65 Trees (7 Existing)
Shrubs Required	260 Shrubs (1,300 / 20) x 4
Shrubs Provided	260 Shrubs
Buffer Length West and East	1,078 l.f. (Type B)
Canopy Trees Required	35.9 Trees (1,078 / 30)
Canopy Trees Provided	36 Trees
Evergreen Trees Required	35.9 Trees (1,078 / 30)
Evergreen Trees Provided	62 Trees (36 Existing)
Shrubs Required	143.7 Shrubs (1,078 / 30) x 4
Shrubs Provided	144 Shrubs
Parking Lot Landscaping	
Parking Lot Area	
Trees Required	5.8 Trees (11,654 / 2,000)
Trees Provided	6 Trees

**Plant List - This Sheet**

sym.	qty.	botanical name	common name	caliper	spacing	root	height
<b>Greenbelt</b>							
ILG	22	Ilex glabra 'Nordic'	Nordic Inkberry		as shown	cont	24"
JCG	3	Juniperus ch. keteleeri	Keteleeri Juniper		as shown	B&B	6', Hedge to 5'
KFG	6	Calamagrostis x. a. 'Karl Forester'	Karl Forester Grass		as shown	cont	#3
LSG	8	Leucanthemum 'Snow Lady'	Shirley Shasta Daisy		as shown	cont	#2
MAG	6	Malus 'Adirondack'	Adirondack Crab Apple	2.0"	as shown	B&B	
ROG	13	Rosa 'Knockout'	Knockout Rose		spacing	cont	#3
	6	Trees Provided					
	25	Shrubs Provided					
<b>Land Use Buffers</b>							
AFB	24	Acer x. freemanii 'Autumn Blaze'	Autumn Blaze Maple	2.5"	as shown	B&B	
ARB	11	Acer rubrum 'Redpoint'	Redpoint Maple	2.5"	as shown	B&B	
EAB	58	Euconymus alata 'Compacta'	Burning Bush		as shown	cont	24"
JCB	125	Juniperus ch. keteleeri	Keteleeri Juniper		as shown	B&B	6', Hedge to 5'
LTB	14	Liriodendron tulipifera	Tulip Tree	2.5"	as shown	B&B	
PAB	20	Picea abies	Norway Spruce		as shown	B&B	6'
POB	181	Physocarpus opulifolius 'Diablo'	Diablo Ninebark		as shown	cont	24"
PSB	18	Pinus strobus	White Pine		as shown	B&B	6'
SPB	40	Spiraea j. 'Little Princess'	Little Princess Spirea		as shown	cont	24"
TOB	12	Thuja pl. 'Green Giant'	Green Giant Arborvitae		as shown	B&B	6'
UPB	21	Ulmus americana 'Princeton'	Princeton Elm	2.5"	as shown	B&B	
	120	Trees Provided					
	404	Shrubs Provided					
<b>Parking Lot Trees</b>							
ASP	3	Acer saccharum 'Legacy'	Sugar Maple	2.5"	as shown	B&B	
LTP	3	Liriodendron tulipifera	Tulip Tree	2.5"	as shown	B&B	
	6	Trees Provided					
<b>General Plantings</b>							
MA	3	Malus 'Adirondack'	Adirondack Crab Apple	2.0"	as shown	B&B	
UP	3	Ulmus americana 'Princeton'	Princeton Elm	2.5"	as shown	B&B	







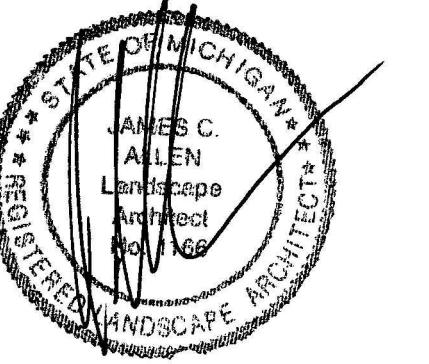
**Landscape Summary - This Sheet**

Existing Zoning	GPUD
<b>Land Use Buffers</b>	
Buffer Length - West and North	1,033 l.f. (Type B)
Deciduous Trees Required	34.4 Trees (1,033 / 30)
Deciduous Trees Provided	35 Trees
Evergreen Trees Required	34.4 Trees (1,033 / 30)
Evergreen Trees Provided	35 Trees
Shrubs Required	137.7 Shrubs (1,033 / 30) x 4
Shrubs Provided	138 Shrubs
Buffer Length - South	262 l.f. (Type C)
Trees Required	13.1 Trees (262 / 20)
Trees Provided	14 Trees
Shrubs Required	52.4 Shrubs (262 / 20) x 4
Shrubs Provided	53 Shrubs
<b>Parking Lot Landscaping</b>	
Parking Lot Area	
Trees Required	25.4 Trees (50,809 / 2,000)
Trees Provided	25 Trees

**Plant List - This Sheet**

sym.	qty.	botanical name	common name	caliper	spacing	root	height
<b>Land Use Buffers</b>							
AFB	11	Acer x. freemanii 'Autumn Blaze'	Autumn Blaze Maple	2.5"	as shown	B&B	
ARB	5	Acer rubrum 'Redpoint'	Redpoint Maple	2.5"	as shown	B&B	
ASB	8	Acer saccharum 'Legacy'	Sugar Maple	2.5"	as shown	B&B	
EAB	57	Euonymus alata 'Compacta'	Burning Bush		as shown	cont	24"
LTB	4	Liriodendron tulipifera	Tulip Tree	2.5"	as shown	B&B	
PAB	23	Picea abies	Norway Spruce		as shown	B&B	6'
PEB	5	Platanus x acerifolia 'Exclamation'	Exclamation London Planetree	2.5"	as shown	B&B	
POB	64	Physocarpus opulifolius 'Diablo'	Diablo Ninebark		as shown	cont	24"
PSB	20	Pinus strobus	White Pine		as shown	B&B	6'
SPB	70	Spiraea j. 'Little Princess'	Little Princess Spirea		as shown	cont	24"
TAB	3	Tilia americana 'Redmond'	Redmond Linden	2.5"	as shown	B&B	
UPB	5	Ulmus americana 'Princeton'	Princeton Elm	2.5"	as shown	B&B	
	84	Trees Provided					
	191	Shrubs Provided					
<b>Parking Lot Trees</b>							
AFP	7	Acer x. freemanii 'Autumn Blaze'	Autumn Blaze Maple	2.5"	as shown	B&B	
ARP	7	Acer rubrum 'Redpoint'	Redpoint Maple	2.5"	as shown	B&B	
ASP	6	Acer saccharum 'Legacy'	Sugar Maple	2.5"	as shown	B&B	
LTP	2	Liriodendron tulipifera	Tulip Tree	2.5"	as shown	B&B	
TAP	3	Tilia americana 'Redmond'	Redmond Linden	2.5"	as shown	B&B	
	25	Trees Provided					
<b>General Plantings</b>							
AR	2	Acer rubrum 'Redpoint'	Redpoint Maple	2.5"	as shown	B&B	
AS	2	Acer saccharum 'Legacy'	Sugar Maple	2.5"	as shown	B&B	
LT	3	Liriodendron tulipifera	Tulip Tree	2.5"	as shown	B&B	
MP	3	Malus 'Profusion'	Profusion Crab Apple	2.0"	as shown	B&B	
PA	5	Picea abies	Norway Spruce		as shown	B&B	6'
PE	4	Platanus x acerifolia 'Exclamation'	Exclamation London Planetree	2.5"	as shown	B&B	
PS	5	Pinus strobus	White Pine		as shown	B&B	6'
QR	2	Quercus rubra	Red Oak	2.5"	as shown	B&B	
TA	3	Tilia americana 'Redmond'	Redmond Linden	2.5"	as shown	B&B	
UP	4	Ulmus americana 'Princeton'	Princeton Elm	2.5"	as shown	B&B	

Seal:



Title:

**Landscape Plan**

Project:

**Lakeland Trails**  
 Hamburg Township, Michigan

Prepared for:

Elevate Property Partners, LLC  
 128 North Center  
 Northville, Michigan 48167

Revision:

Revised  
 Revised  
 Revised

Issued:

April 11, 2024  
 April 22, 2024  
 August 16, 2024  
 September 25, 2024

Job Number:

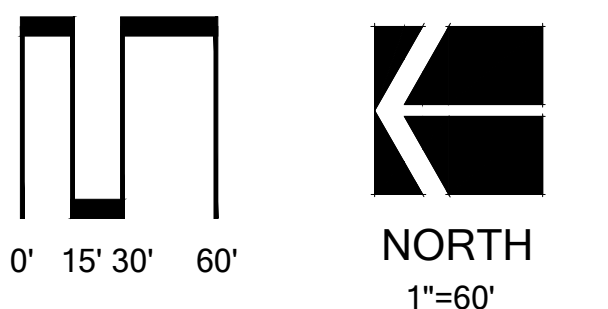
24-019

Drawn By:

jca

Checked By:

jca



Sheet No.

**L-3**



