



10405 Merrill Road
P.O. Box 157
Hamburg, MI 48139
(810) 231-1000
www.hamburg.mi.us

REQUEST FOR PROPOSAL

February 6, 2025

Portable Toilet Contract Bid

Manly Bennett Park & Lakelands Trail

Hamburg Township, MI

Due: February 20, 2025 – 4 p.m.

To be awarded: March 4, 2025 at Township Board Regular Meeting

Service to start: Week of March 10, 2025

Hamburg Township Parks and Recreation is seeking bids from insured vendors to provide Portable Toilet service for Manly Bennett Park (East/West), Merrill Field Disc Golf/Adult Workout, Pickleball, and the Lakelands Trail. See attached maps reflecting placement.

Pricing for a 3-year contract is requested for units and terms as follows:

Portable Toilet Breakdown – Master List – 2025

Lakelands Trail (Trailheads: Village, Merrill, Pettysville) – 1 cleaning per week (2 cleanings April-November)

- **Annual Contract Lakelands Trail**
 - Village – across from Hamburg Pub
 - Accessible/ADA – 1
 - Regular - 1
 - Merrill – across from Township Hall
 - Accessible/ADA – 1
 - Regular - 1
 - Pettysville – across from Sunoco/Frosty's
 - Accessible/ADA – 1
 - Regular – 1

West Park (Soccer, Adult Workout, Disc Golf)

- **Seasonal (Mid-March – Mid-November)**
 - Soccer near Field H3 – end of sidewalk toward back of park
 - Accessible/ADA – 1
 - Soccer near Field H2 – Near tree cluster
 - Accessible/ADA – 1
 - Regular – 1
 - Soccer near concession stand
 - Regular – 1
- **Annual Contract West Park**
 - Adult Workout Area – adjacent to sidewalk in best location in shade near parking
 - Accessible/ADA – 1
 - Regular – 1

East Park (Baseball, Volleyball, Football, Flyer's Field & Pickleball):

- **Seasonal (Mid-March – Mid-November)**
 - Baseball near Playground (2 of these regular units moved to Football in August)
 - Accessible/ADA – 1
 - Regular – 3
 - ***Note: monitor during Baseball Season to see if 2x per week needed***
 - T-Ball – near fields in shaded area
 - Regular - 1
 - Volleyball Area – Near tree
 - Regular – 1
 - Flyer's Field – Top of Hill near Rocket Launch Pad
 - Accessible/ADA – 1
 - Pickleball near Senior Center building (This remains weather permitting through December)
 - Accessible/ADA – 1
- **Seasonal (August-October only, moved from baseball near playground – See note above)**
 - *Football Field 1 – near Storage Garage*
 - Regular – 1
 - *Football Field 2 – Behind Diamond #1*
 - Regular – 1

Totals:

Regular Seasonal: 7

ADA Seasonal: 5

Regular Annual: 4

ADA Annual: 4

Quotes may be submitted electronically to dhenneman@hamburg.mi.us, via mail at: Hamburg Township Parks & Recreation, P.O. Box 157, Hamburg, MI 48139 or in person at: Hamburg Township Municipal Offices, 10405 Merrill Road, Whitmore Lake, MI during normal business hours.

Brochures outlining vendor services are also appreciated. For more information, please contact Deby Henneman, Parks Coordinator at (810) 222-1124 or dhenneman@hamburg.mi.us.



Lakelands Trail Portable Toilet Contract—2025

1 of 3 Trailhead locations

Portable Toilet Placement (Annual)

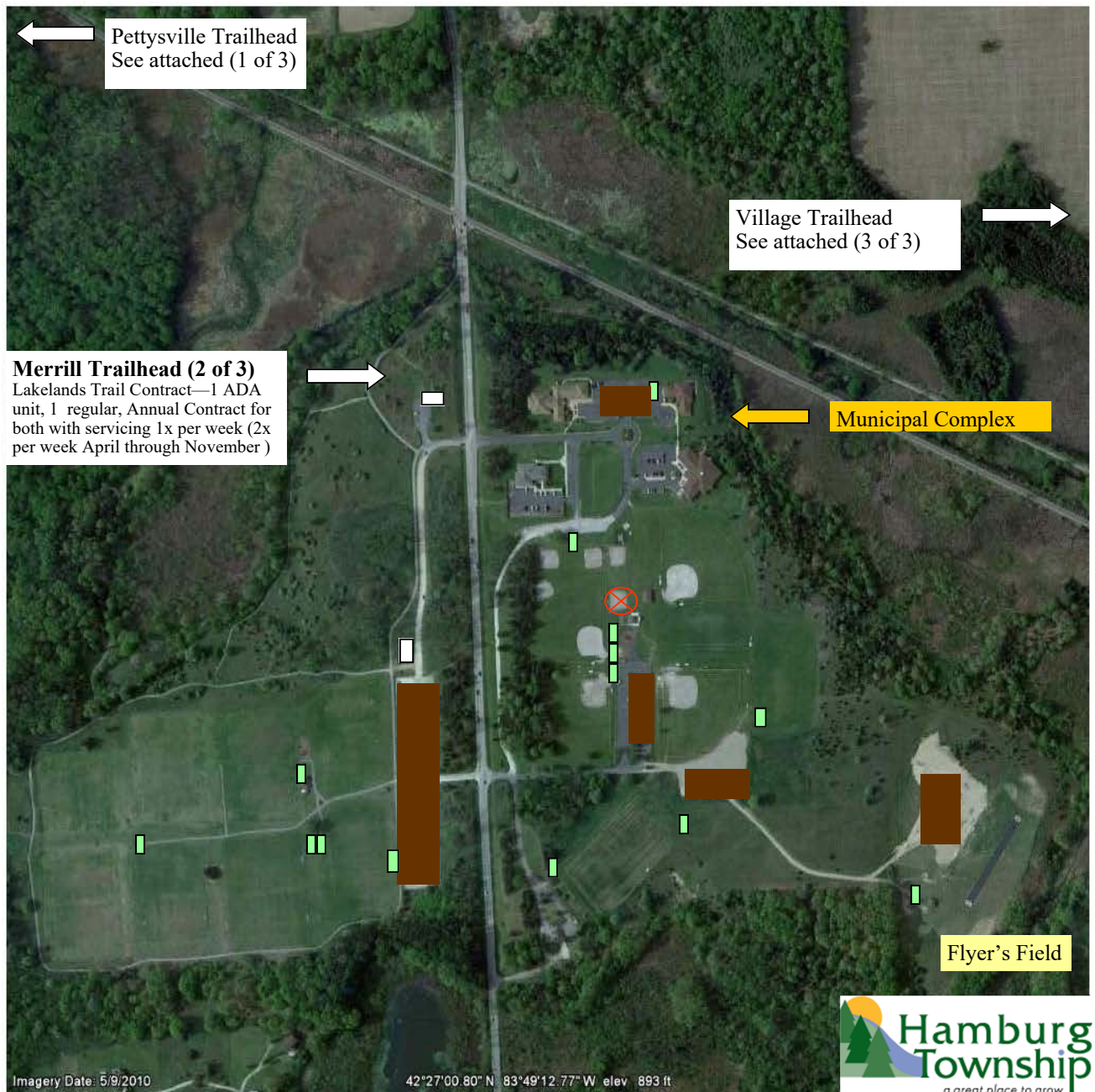
1 ADA - Corner of Parking lot near Informational Kiosk and Handicap parking

1 Regular unit— Corner of Parking lot near Informational Kiosk and Handicap parking

(Additional Seasonal)

April 1st through November—These units receive 2 cleanings per week

☐ Approximate Toilet Locations (Trail Contract)



Park & Recreation—Portable Toilet Contract

Manly Bennett West—Soccer Fields

Seasonal Portable Toilet Placement (March- November)

- 1 Regular—Near Playground
- 1 ADA—Near Oak Tree
- 1 Regular—Near Oak Tree
- 1 ADA – Southeast corner of soccer fields near parking
- 1 Regular—end of Sidewalk

Disc Golf /Workout Area Toilet Contract

1 ADA— adjacent to path near Adult Workout (annual)



Parking Areas



Approximate Toilet Locations (Park Contract/Season)



Approximate Toilet Locations (Trail Contract/Annual)

Park & Recreation—Portable Toilet Contract

Manly Bennett East—Baseball, Football & RC Flyer's Fields

Portable Toilet Placement (March—November)

- 1 ADA—Near Flyer's Field
- 1 Regular—Near Volleyball/Football
- 1 Regular—Behind Ball Diamond #1 near Rugby
- 1 Regular—Near Police/T'Ball
- 1 ADA—Near Ball Diamonds/Playground
- 2 Regular— Near Ball Diamonds/Playground
- 1 Regular—Near Shed/Football #1 (Aug-Oct)



Parking Areas



Approximate Toilet Locations (Park Contract/Season)



Approximate Toilet Locations (Trail Contract/Annual)



Lakelands Trail Portable Toilet Contract

3 of 3 Trailhead locations (Has now been developed with asphalt)

Portable Toilet Placement (Annual)

1 ADA—Village Trailhead, closest possible location to Accessible parking with accessible route to get to unit
 1 Regular—Near Accessible unit

These units are cleaned 2x per week April-November

☐ Approximate Toilet Locations (Trail Contract)