

- ① N89°58'28\"/>
- ② N09°33'44\"/>
- ③ N41°10'59\"/>
- ④ N89°51'33\"/>
- ⑤ S41°10'59\"/>
- ⑥ S09°33'44\"/>
- ⑦ N89°58'28\"/>
- ⑧ N89°59'17\"/>
- ⑨ S89°59'20\"/>
- ⑩ N76°34'13\"/>
- ⑪ S77°02'35\"/>
- ⑫ N89°58'28\"/>
- ⑬ S89°58'28\"/>
- ⑭ N89°51'33\"/>
- ⑮ N00°08'27\"/>
- ⑯ N00°12'39\"/>
- ⑰ N00°08'27\"/>
- ⑱ S00°12'39\"/>

SECTION 3

SHEET 3 OF 4

NE 1/4 SE 1/4 NE 1/4
SHEET 4 OF 4

SE 1/4 SE 1/4 NE 1/4

668.16' N89°39'19\"/>E



1332.33' S00°20'12\"/>E

E 1/2

3.88, 50.00S, .46151C1

GL #1

SHEET 2 OF 4

W 1/2

GL #1

BEARTRACK RIDGE SUBD (Plat 88-26)

TR. IV LOT 1 plat 92-45

TR. III

TR. VII-A

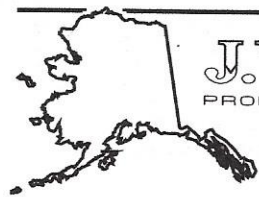
TR. VII-B

LOT 2



SHEET 1 OF 4

SCALE 1"=220'

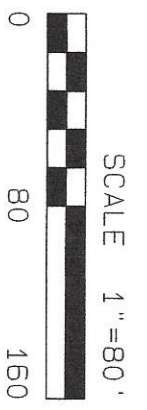


J.W. BEAN
 PROFESSIONAL SURVEYOR
 1070 ARCTIC CIRCLE
 JUNEAU - ALASKA
 (907) 723-3610
 SURVEYOR - PLANNER

AS-BUILT SURVEY OF BURIED ELECTRIC LINE WITHIN EAST PORTION OF SECTION 3 T40S, R59E, CRM

15.0' EASEMENT
2009-007070-0

DOUG FINLEY
CORNER RECOVERED



SHEET 2 OF 4

- 7 N89°58'28"W 24.00'
- 8 N89°59'17"E 24.00'
- 9 S89°59'20"W 24.00'
- 10 N76°34'13"W 24.68'
- 11 S77°02'35"E 24.64'
- 12 N89°58'28"W 24.00'

TR. III

N00°05'38"W 310.61'

**BEARTRACK
RIDGE SUBD**

TR. IV
LOT 2

N00°05'38"W 330.63'

REACTOR CABINET
SPLICE CABINET

W 1/2

20.0' ACCESS EASEMENT

24.0' EASEMENT
Plat 88-26

RE-BAR W/CAP
DOUG FILEY
24.0' EASEMENT
2009-007070-0

GL #1

TR. VII-A

N00°05'38"W 286.66'

S00°05'38"E 292.40'

RINK CREEK ROAD

TR. VII-B

LOT 2

11

SW 1/4 NE 1/4

SW 1/4 SE 1/4 NE 1/4
SHEET 3 OF 4

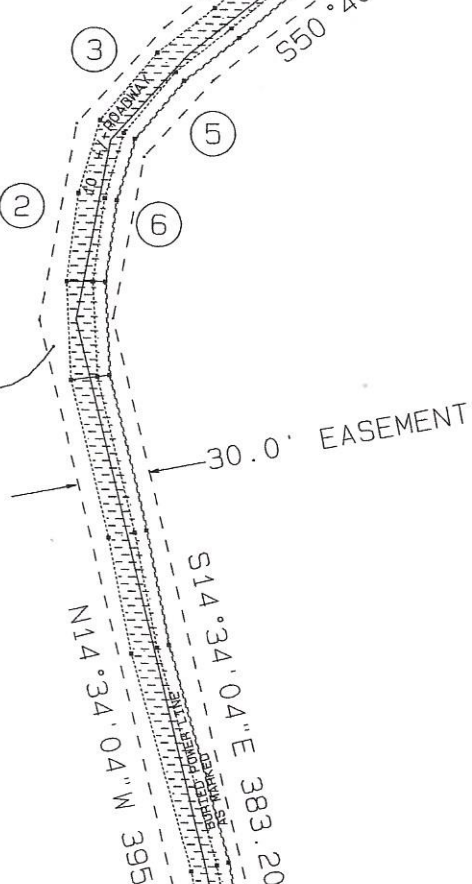
SECTION 3

- ① N89°58'28"W 15.00'
- ② N09°33'44"E 83.61'
- ③ N41°10'59"E 53.90'
- ⑤ S41°10'59"W 42.92'
- ⑥ S09°33'44"W 68.71'
- ⑬ S89°58'28"E 15.00'



30.0' EASEMENT
2009-006623-0

N50°40'55"E 203.97'
S50°40'55"W 196.38'



S14°34'04"E 383.20'
N14°34'04"W 395.96'

S38°25'38"E 149.81'
N38°25'38"W 169.95'

15.0' EASEMENT
2009-006623-0

15.0' EASEMENT
2009-007070-0

N00°10'09"E 361.16'

S00°10'09"W 361.16'

N00°10'08"E 351.57'

S00°10'08"W 351.57'

S00°08'27"E 311.75'

N00°08'27"W 311.75'

15.0' EASEMENT

15.0' EASEMENT
2009-007070-0

DOUG FINLEY
CORNER RECOVERED

TR. III

RECOVERED CORNER AS MARKED

PLAT

SECTION 2

2011-9



NE 1/4 NE 1/4

LOT 12

4

17

15.0' EASEMENT
2009-006623-0

EASEMENT
15.0'

N00°08'27"W 275.68'

N00°08'27"E 302.16'

N00°08'27"W 222.16'

N00°08'27"W 54.00'

N00°12'39"W 26.00'

N00°08'27"W 30.00'

N89°51'33"E 30.00'

N89°51'33"E 15.00'

N89°51'33"E 15.00'

N00°08'27"W 54.00'

N00°12'39"W 26.00'

N00°08'27"W 30.00'

N89°51'33"E 30.00'

N89°51'33"E 629.34'

S89°51'33"W 659.36'

S89°51'33"W 657.60'

N89°51'33"E 1316.93'

30.0' EASEMENT
2009-006622-0

N89°51'33"E 1316.93'

30'-7" ROADWAY
DOTTED POWER LINE
AS MARKED

S89°51'33"W 659.36'

N89°51'33"E 629.34'

S89°51'33"W 657.60'

N89°51'33"E 657.65'

30.0' EASEMENT
2009-007070-0

15.0' EASEMENT

15.0' EASEMENT

15.0' EASEMENT

15.0' EASEMENT

15.0' EASEMENT

15.0' EASEMENT

15.0' EASEMENT

15.0' EASEMENT

15.0' EASEMENT

15.0' EASEMENT

15.0' EASEMENT

15.0' EASEMENT

15.0' EASEMENT

15.0' EASEMENT

15.0' EASEMENT

15.0' EASEMENT

15.0' EASEMENT

15.0' EASEMENT

15.0' EASEMENT

15.0' EASEMENT

15.0' EASEMENT

15.0' EASEMENT

15.0' EASEMENT

15.0' EASEMENT

15.0' EASEMENT

15.0' EASEMENT

15.0' EASEMENT

15.0' EASEMENT

15.0' EASEMENT

15.0' EASEMENT

15.0' EASEMENT

15.0' EASEMENT

15.0' EASEMENT

15.0' EASEMENT

SHEET 4 OF 4

NE1/4SE1/4NE1/4