

CHENE-TROMBLEY PARK

MASTER PLAN DESIGN PACKAGE



STUCKY VITALE ARCHITECTS

27172 WOODWARD AVENUE
ROYAL OAK, MI 48067-0925
P. 248.546.6700
F. 248.546.8454
WWW.STUCKYVITALE.COM



CITY OF GROSSE POINTE WOODS

20025 MACK PLAZA
GROSSE POINTE WOODS
MICHIGAN 48236
(313) 343-2440

#	CONTENTS
TS1.1	COVER SHEET
TS1.2	INTRODUCTION & HISTORY
P1.1	PHASING PLAN
SP1.0	EXISTING SITE PLAN
SP1.1	SITE PLAN - PARK IMPROVEMENTS
SP1.2	ENLARGED SITE PLAN [AREA A - ENTRY]
SP1.3	ENLARGED SITE PLAN [AREA B - TOT LOT]
SP1.4	ENLARGED SITE PLAN [AREA C - WALKWAY]



CREDIT: www.gpwfoundation.org

INTRODUCTION

THIS DOCUMENT IS INTENDED TO SERVE AS A PLANNING GUIDELINE FOR ONGOING IMPROVEMENTS TO THE GROSSE POINTE WOODS CHENE-TROMBLEY PARK. STUCKY VITALE ARCHITECTS WAS CONTACTED BY THE CITY OF GROSSE POINTE WOODS IN 2020 TO REVIEW THE EXISTING CONDITIONS ON SITE AND PROVIDE RECOMMENDATIONS FOR POTENTIAL FUTURE IMPROVEMENTS IN A MASTER PLAN DOCUMENT.

WORKING IN CONJUNCTION WITH CITY OFFICIALS AND MEMBERS OF THE COMMUNITY, THE CHENE-TROMBLEY PARK MASTER PLAN DESIGN PACKAGE IS THE PRODUCT OF A DELIBERATE AND COLLABORATIVE PROCESS, REPRESENTING THE CONTINUING COMMITMENT OF THE CITY AND ITS RESIDENTS TO THE IMPROVEMENT OF THESE SHARED AMENITIES.

INCLUDED IN THIS DOCUMENT ARE A SERIES OF DETAILED SITE PLANS INDICATING RECOMMENDED MODIFICATIONS TO THE EXISTING SITE AS WELL AS PROPOSED NEW FEATURES & AMENITIES TO ENHANCE THE APPEARANCE, THE ACCESSIBILITY, AND THE USABILITY OF THE PARK FOR FUTURE GENERATIONS.



PARK HISTORY

"ON APRIL 26, 1938, A NEIGHBORHOOD MEETING WAS HELD AT THE HOME OF MRS. EDGAR HALLEAD TO DISCUSS WAYS OF OBTAINING RECREATIONAL FACILITIES FOR THEIR COMMUNITY AND CHILDREN.

"MRS. HATTIE CHENE DONATED THE USE OF A PARCEL OF LAND, LOCATED AT RIDGEMONT AND MACK AVENUE, TO THE NEWLY ORGANIZED GROUP - THE GROSSE POINTE WOODS COMMUNITY CLUB - IN MEMORY OF HER MOTHER AND FATHER, MRS. AND MRS. COLUMBUS TROMBLEY. MRS. HALLEAD BECAME THE CLUB'S FIRST PRESIDENT.

"LATER, MRS. CHENE DEEDED THE LAND TO THE VILLAGE OF GROSSE POINTE WOODS WHICH LATER BECAME THE CITY OF GROSSE POINTE WOODS. MRS. CRYSTAL GREGORY, THEN PRESIDENT OF THE CLUB, APPOINTED MRS. HALLEAD, MR. A.A. GHESQUIERE AND MRS. HOWARD IIAMS TO THE BUILDING COMMITTEE. WITH CONTRIBUTIONS OF MONEY AND VOLUNTEER HELP FROM MEMBERS OF THE COMMUNITY, THE COMMUNITY CLUB BUILDING OPENED IN 1941. A FIVE-ROOM ADDITION WAS ADDED IN 1952 THROUGH THE EFFORT OF MR. MERVYN GASKIN AND MR. LEON RATCLIFFE.

"FOR MANY YEARS THE ACTIVITIES OF THE CLUB INCLUDED A NURSERY SCHOOL, DANCING CLASSES AND SUPERVISED RECREATIONAL ACTIVITIES, AND THEN THE EMPHASIS SHIFTED TO GROUP WORK, INFORMAL EDUCATION AND FURTHER RECREATIONAL ACTIVITIES.

"AS TIME WENT ON, RECREATIONAL ACTIVES WERE SEEN AS A MUNICIPAL FUNCTION AND WERE TAKEN OVER BY A CITY RECREATION COMMISSION. THE COMMUNITY CLUB THEN MOVED TO BRING TO A CLOSE ITS LONG YEARS OF SERVICE WHICH HAD BEEN FINANCED BY THE LOCAL COMMUNITY AND BY UNITED COMMUNITY SERVICES. WHEN THE BUILDING FELL INTO DISREPAIR AND WAS NOT ADAPTABLE FOR THE RECREATIONAL NEEDS OF THE CITY, IT WAS DEMOLISHED, THOUGH THE CHENE-TROMBLEY PLAYGROUND IS STILL MAINTAINED AND USED TO THIS DAY."

REFERENCE: BROCHURE "TAKE A WALK IN THE WOODS: A GUIDE TO PARKS IN THE CITY OF GROSSE POINTE WOODSS" PREPARED BY THE GROSSE OPINTE HISTORICAL COMMISSION.



MASTER PLAN DESIGN

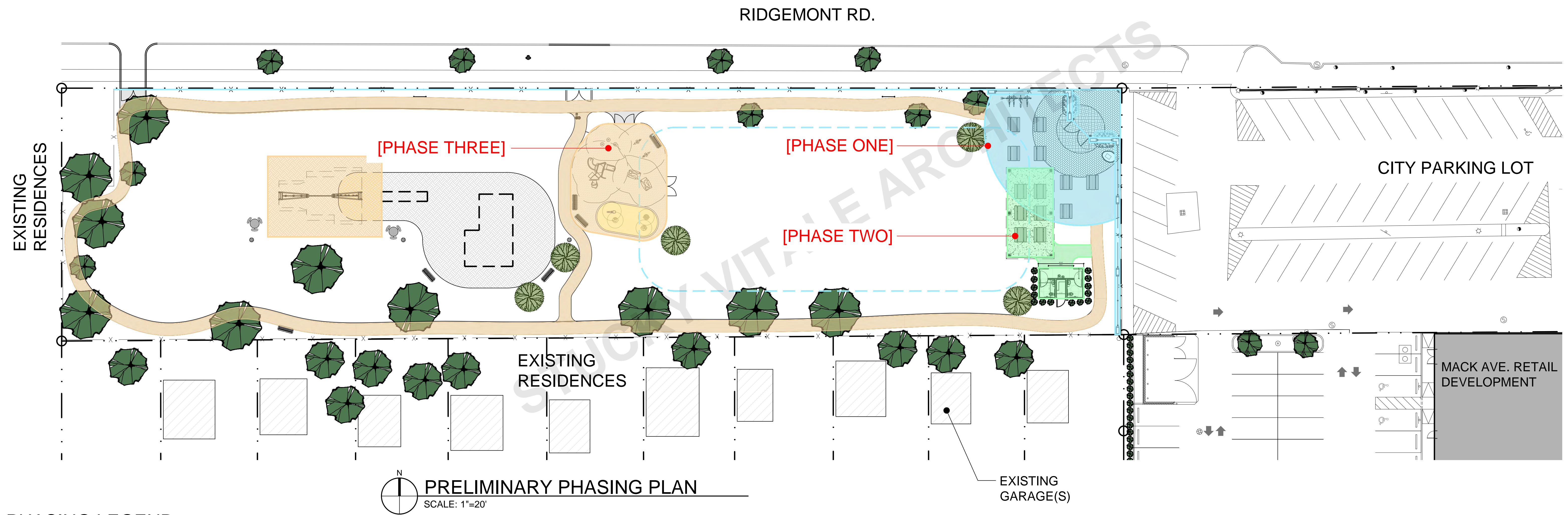


2021.027

CHENE-TROMBLEY PARK MASTER PLAN
20861 RIDGEMONT RD.
GROSSE POINTE WOODS, MI 48236
DRAWN BY: JPM

CONCEPTUAL DESIGN PACKAGE

FEBRUARY 24, 2022



PHASING LEGEND

PHASE INDICATION	BRIEF DESCRIPTION	PHASE INDICATION	BRIEF DESCRIPTION	PHASE INDICATION	BRIEF DESCRIPTION
<div><div></div><div>PHASE #1</div></div>	<ul style="list-style-type: none">- MASONRY ENTRY & UP-LIGHTING- FOUNDATIONS- WROUGHT IRON GATE- PERIMETER FENCE & GATES- BOULDER & HISTORICAL PLAQUE- HARD-SCAPE PAVERS- TREE REMOVAL- RE-GRADE ICE RINK AREA- DEMO. EXISTING FENCE	<div><div></div><div>PHASE #2</div></div>	<ul style="list-style-type: none">- PAVILION SLAB- PAVILION FOOTINGS- PAVILION (PRE-FAB)- BIKE RACK- TOILET ROOMS- LANDSCAPE SCREENING- CONCRETE SLAB AND FOOTINGS- UNDERGROUND UTILITIES	<div><div></div><div>PHASE #3</div></div>	<ul style="list-style-type: none">- TOT LOT CONSTRUCTION- TOT LOT PLAY EQUIPMENT- TOT LOT FENCING- WALKING PATH (ASPHALT)- WALKING PATH BENCHES- NEW SWINGS- BI-LEVEL PEDESTAL FOUNTAIN- TREES- BENCHES

NOTE: DEVIATIONS FROM THE INDICATED PHASES MAY OCCUR DUE TO CONSTRUCTION FEASIBILITY. IN-FIELD REVISIONS WILL BE COORDINATED WITH THE LOCAL TRADE INSPECTORS. G.C. SHALL DEVELOP A CONSTRUCTION PLAN AND COORDINATE CHANGES IN ADVANCE.



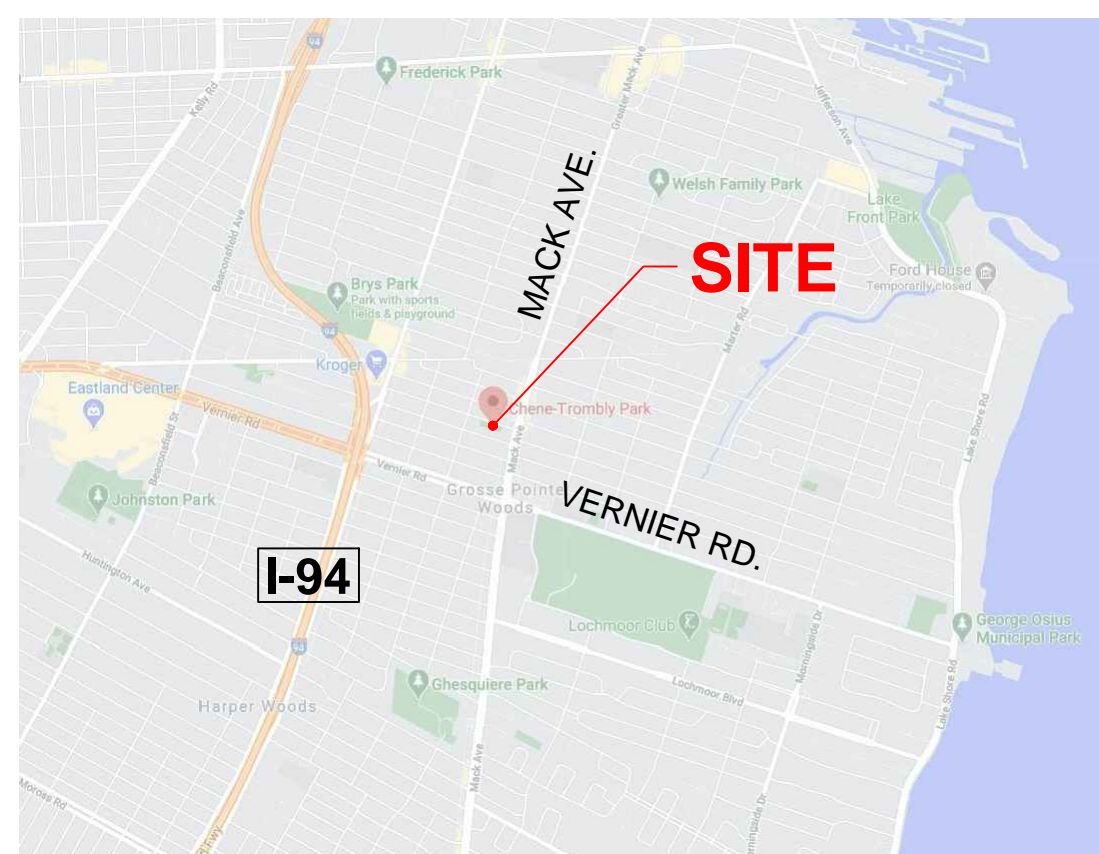
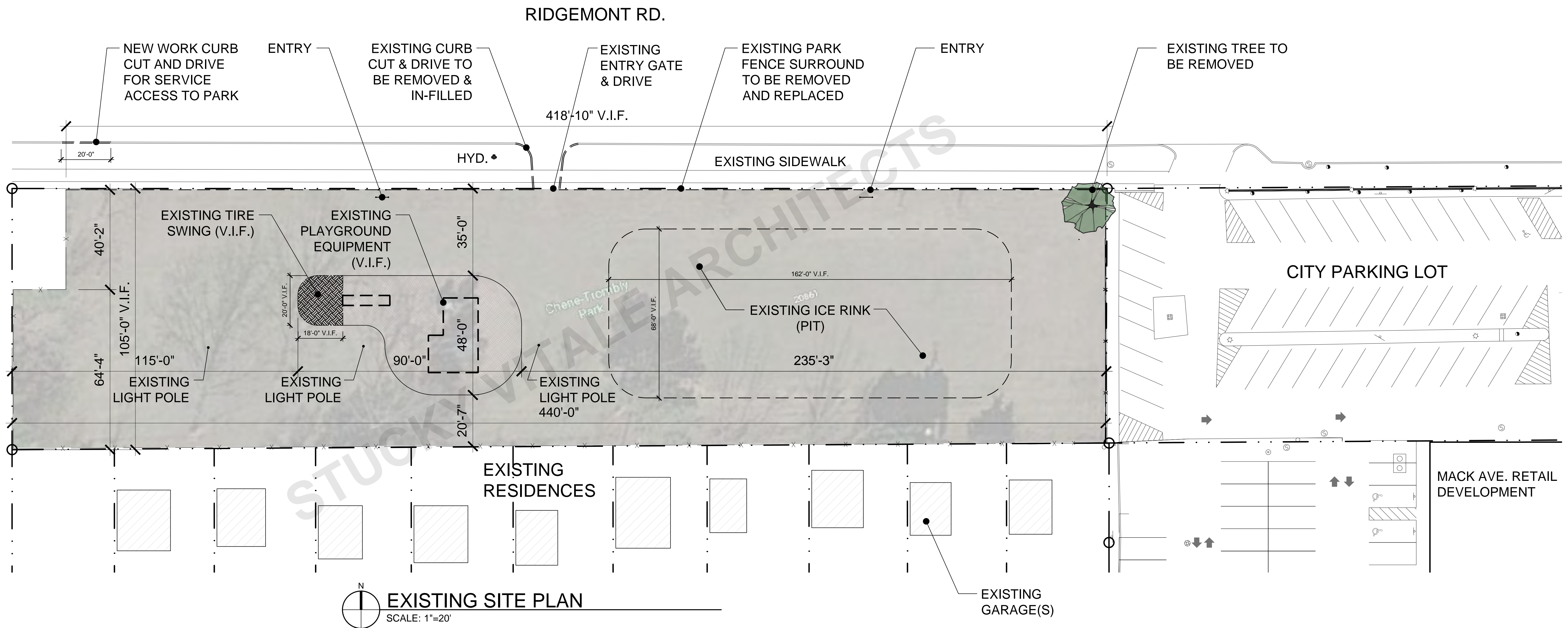
2021.027
CHENE-TROMBLEY PARK MASTER PLAN
20861 RIDGEMONT RD.
GROSSE POINTE WOODS, MI 48236
DRAWN BY: JPM

MASTER PLAN DESIGN

CONCEPTUAL DESIGN PACKAGE

FEBRUARY 24, 2022

CHENE-TROMBLEY PARK



2021.027

CHENE-TROMBLEY PARK MASTER PLAN
20861 RIDGEMONT RD.
GROSSE POINTE WOODS, MI 48236
DRAWN BY: JPM

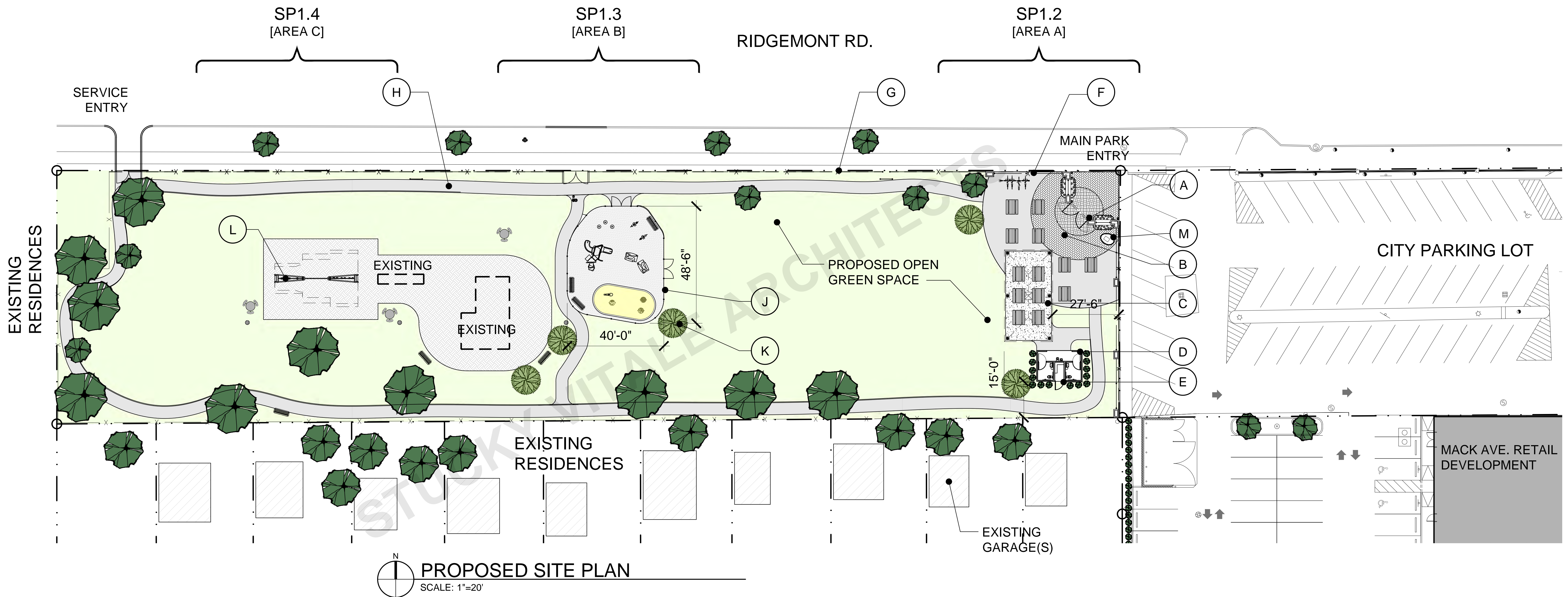
MASTER PLAN DESIGN

CONCEPTUAL DESIGN PACKAGE

FEBRUARY 24, 2022

SP1.0

CHENE-TROMBLEY PARK



VICINITY MAP
SCALE: NOT TO SCALE

NEW PROPOSED PARK IMPROVEMENTS		NEW PROPOSED PARK IMPROVEMENTS	
TAG	DESCRIPTION	TAG	DESCRIPTION
(A)	NEW MASONRY AND DECORATIVE METAL ENTRANCE GATE + SIGNAGE WITH UP-LIGHTING	(F)	NEW WROUGHT IRON FENCING AND MASONRY PIER(S)
(B)	NEW OUTDOOR HARDSCAPE PICNIC AREA	(G)	NEW 36" HT. FENCE
(C)	NEW OUTDOOR PAVILION STRUCTURE WITH ADA B.F. ACCESS	(H)	NEW QUARTER-MILE CONCRETE WALKING PATH WITH DISTANCE MARKERS
(D)	ADA UNISEX TOILET(S) + DRINKING FOUNTAIN WITH BOTTLE RE-FILL	(J)	NEW TOT LOT WITH 30" HT FENCE
(E)	STORAGE SHED WITH HOSE-BIBB WATER CONNECTION	(K)	NEW SHADE TREES
		(L)	NEW SWING EQUIPMENT + WOOD CHIP BASE
		(M)	BOULDER WITH HISTORIC DEDICATION PLAQUE



MASTER PLAN DESIGN

2021.027

CHENE-TROMBLEY PARK MASTER PLAN
20861 RIDGEMONT RD.
GROSSE POINTE WOODS, MI 48236
DRAWN BY: JPM



TREE TOP PRODUCTS POWDER-COATED PARK-IT BIKE RACKS (OR APPROVED EQUAL) PER GROSSE POINTE WOODS DESIGN STANDARDS



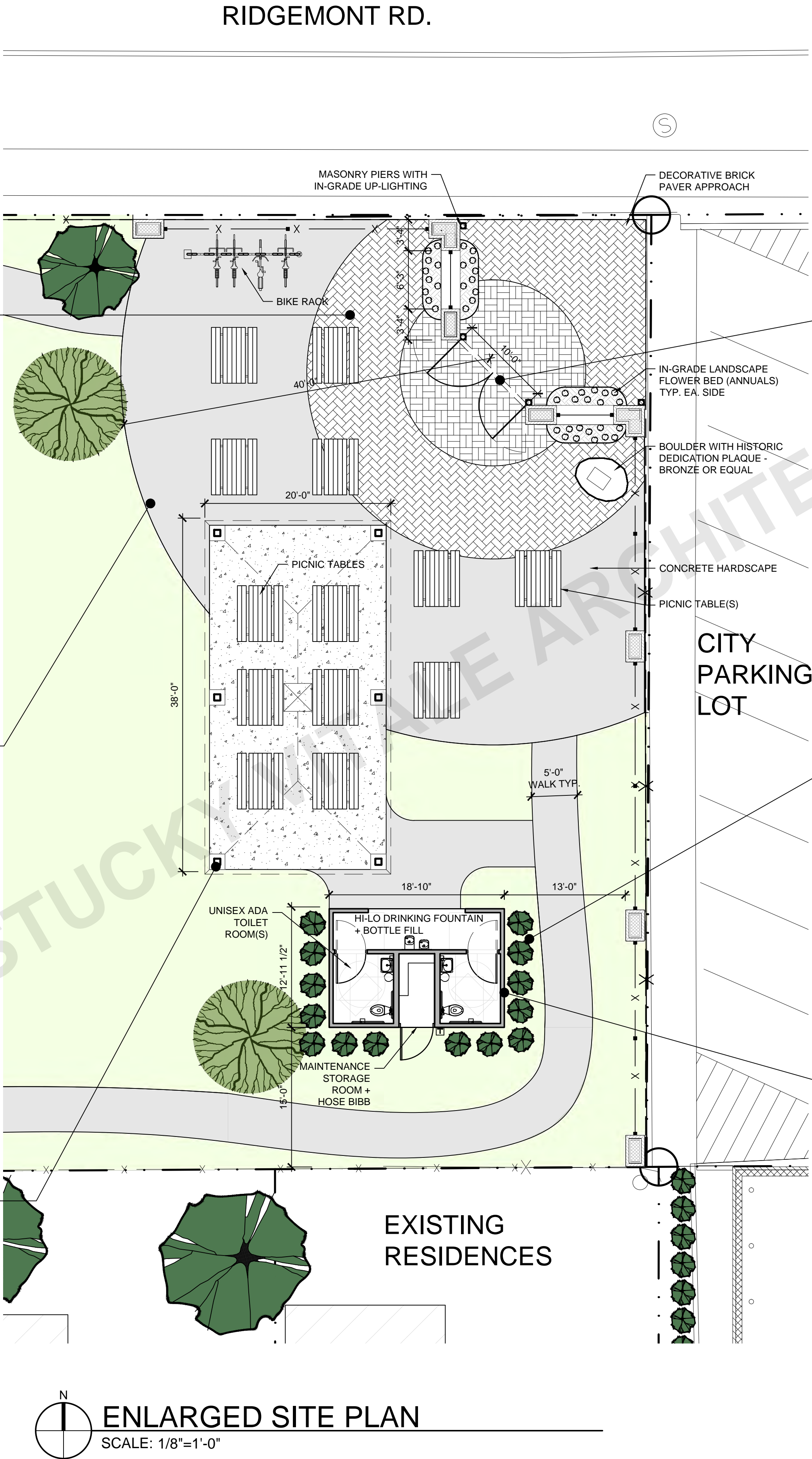
PERSONALIZED & SPECIALTY EMBOSSED HARDSCAPE MASONRY PAVERS



GROSSE POINTE WOODS STANDARD PICNIC TABLE WITH UMBRELLA HOLE. SUPERSAVER COMMERCIAL ROUND PICNIC TABLES (OR APPROVED EQUAL).



COMMERCIAL 20' X 40' HIP ROOF STYLE WOOD PAVILION KIT. AMERICAN LANDSCAPE STRUCTURES OR APPROVED EQUAL.



DECORATIVE MASONRY ENTRY AND GATE [CONCEPT IMAGE]



ARBORVITAE LANDSCAPE SCREENING



PRE-FABRICATED PUBLIC TOILET FACILITY WITH DRINKING FOUNTAIN + BOTTLE FILL, EQUIPMENT STORAGE SHED + HOSE BIBB CONNECTION. [CONCEPT IMAGE]



MASTER PLAN DESIGN



2021.027
CHENE-TROMBLEY PARK MASTER PLAN
20861 RIDGEMONT RD.
GROSSE POINTE WOODS, MI 48236
DRAWN BY: JPM

CONCEPTUAL DESIGN PACKAGE

FEBRUARY 24, 2022

SP1.2



EDUCATIONAL PANELS



STEPPER - NATURAL STONE



PLAYGROUND EQUIPMENT



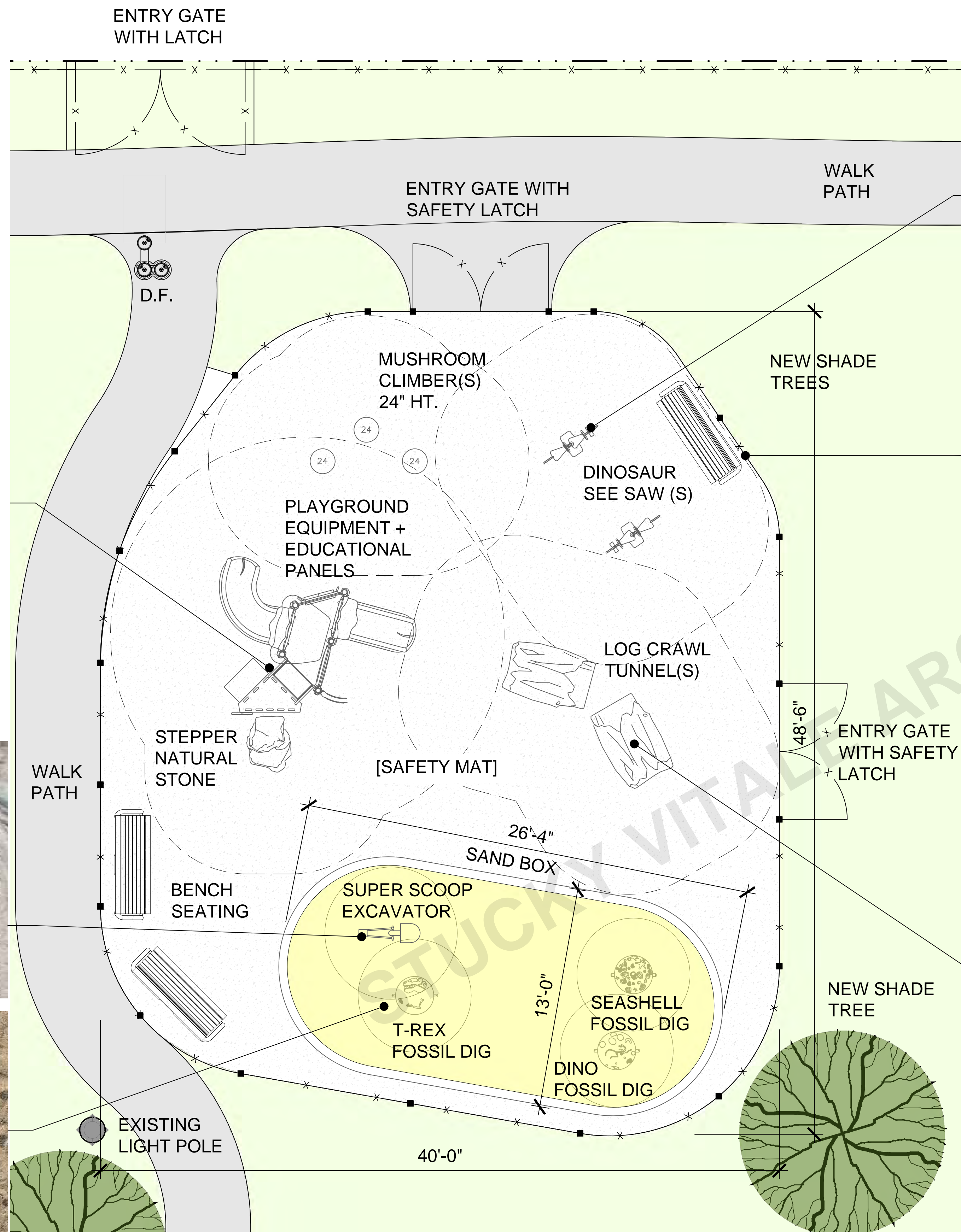
DINO
FOSSIL DIG - STONES



SEASHELL



T-REX



ENLARGED SITE PLAN - TOT LOT
SCALE: 1/4"=1'-0"

GENERAL NOTE: DASHED LINES
INDICATE PLAYGROUND
EQUIPMENT CLEARANCES



PLAYSCAPE FENCE SURROUND



LOG CRAWL TUNNEL



MASTER PLAN DESIGN



2021.027

CHENE-TROMBLEY PARK MASTER PLAN
20861 RIDGEMONT RD.
GROSSE POINTE WOODS, MI 48236
DRAWN BY: JPM

CONCEPTUAL DESIGN PACKAGE

FEBRUARY 24, 2022

SP1.3



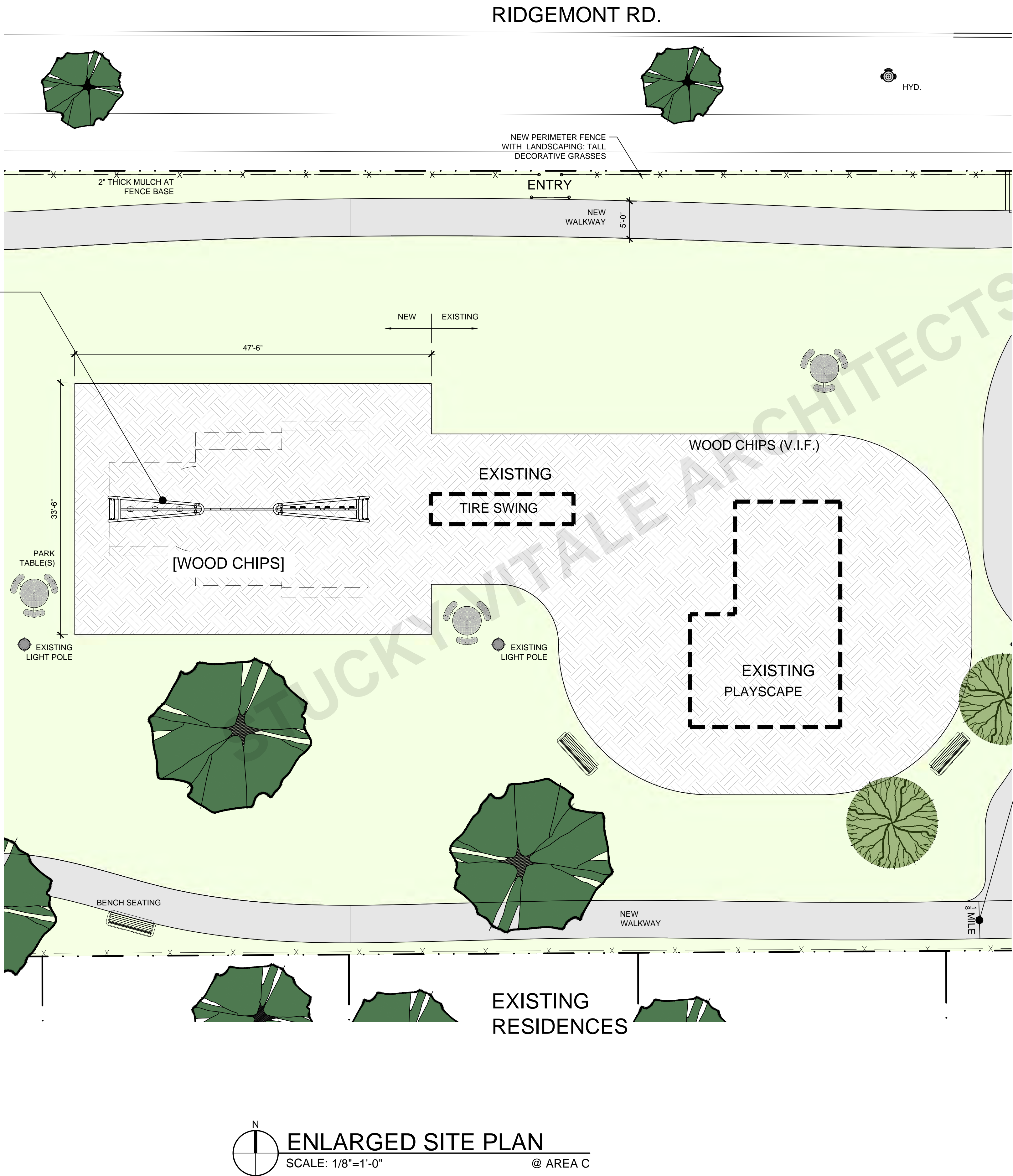
SWING EQUIPMENT + NEW EXPANDED WOOD CHIP AREA



WALKING PATH BENCHES PER GROSSE POINTE WOODS DESIGN STANDARDS



CHAIN LINK PERIMETER FENCE BLACK OR GREEN COATED



OUTDOOR DRINKING FOUNTAIN BI-LEVEL PEDESTAL WITH PET STATION. ELKAY OR EQUAL (FOR LOCATION - REFER TO SP1.3)



DISTANCE MARKERS
1/4 MILE PERIMETER WALK



MASTER PLAN DESIGN



2021.027
CHENE-TROMBLEY PARK MASTER PLAN
20861 RIDGEMONT RD.
GROSSE POINTE WOODS, MI 48236
DRAWN BY: JPM

CONCEPTUAL DESIGN PACKAGE

FEBRUARY 24, 2022

© 2019 STUCKY VITALE ARCHITECTS

CHENE-TROMBLEY PARK

SP1.4