

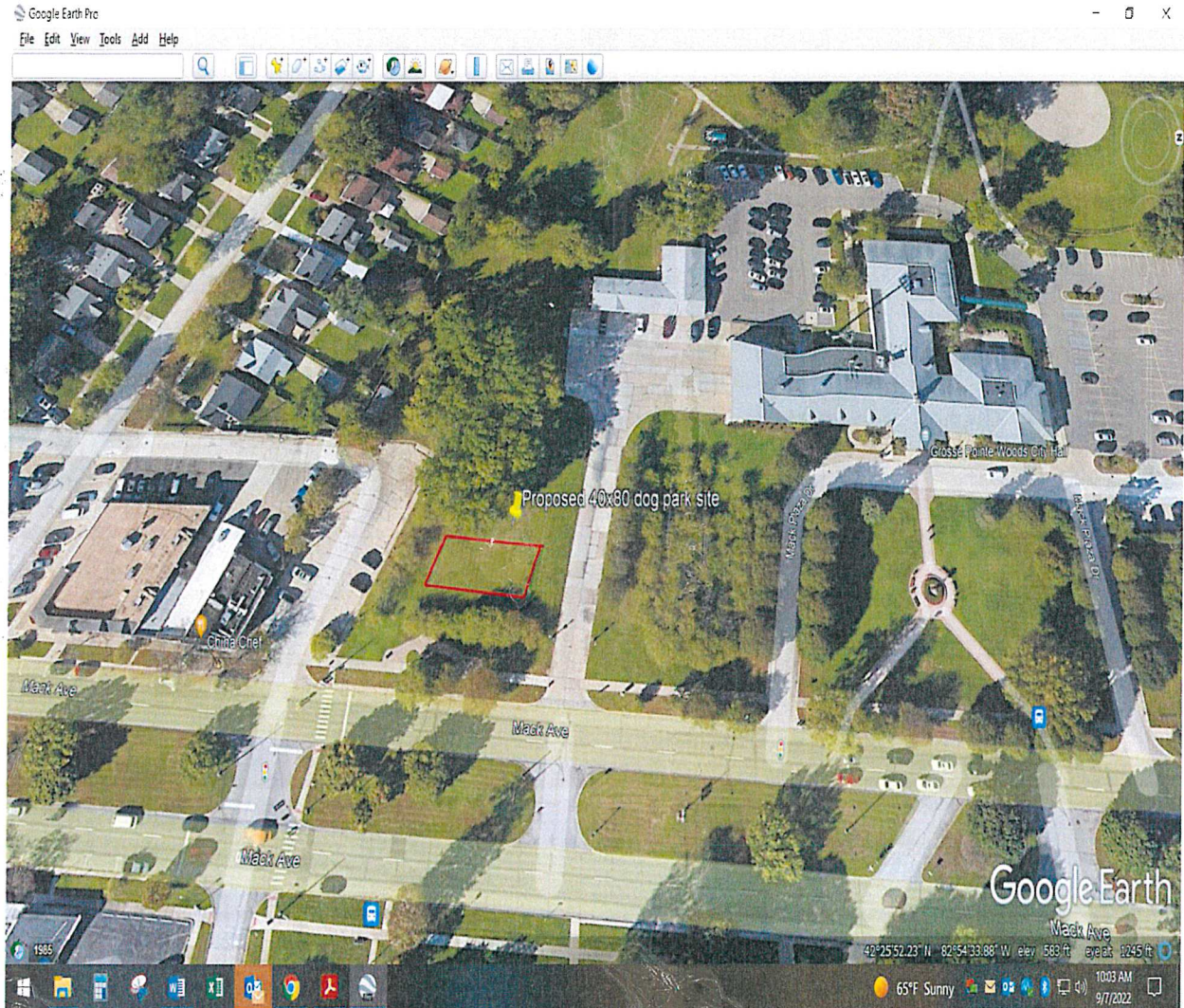
9/6/2022

Dog Park Overview

Page:

- 1) Location and size
- 2) Purpose
- 3) Security Options
- 4) Fiscal Impact Plan 1 & 2 Options = Cost
- 5) Fundraising Opportunities

Location



Proposed Area: 40 x 80 x 40 x80 feet

Proposed Address: 20025 Mack Ave, Grosse Pointe, MI 48230, United States

Purpose

Many communities in Metro Detroit strive to give new families as many amenities as possible to ensure that they buy and stay in their community.

With both Lake Front Park and Ghesquiere we are currently offering a wide range of services that many other cities can't.

The National Board of Realtors lists dog parks as one of new buyers' top ten requested items.

Adding a second dog park within walking distance of most homeowners would have a very appealing pitch to attract and keep new home buyers.

Longtime residents would be able to use the dog park and benefit from their home's enhanced value when they decide to sell.

Security Options:

1) Low tech: mechanical lock on the gate.

Citizens receive a key when they get their dog license.

I recommend we re-key the lock every winter and re-issue key's every year.

2) Medium tech: key fob that opens the electric lock.

Also given when dogs get their license.

3) High tech: bar code reader that saves the name and date for 24 hours with an onboard chip.

The dogs already have a bar code when they get their park pass and license.

This system would incorporate the current software we used at Lake Front Park.

Cost Option 1:

1) Chain link fence 350 linear feet x 6 ft	=	\$1,000
2) 40 galvanized 6 ft post "Green coated"	=	\$ 900
3) 30 x 40Lbs bags concrete	=	\$ 250
4) Hardware	=	\$ 250
5) Custom gate	=	\$1,000
6) Key lock to fence	=	\$1,000
7) Electricity hook up "DPW "		NC
8) Fence installation "DPW"		NC
9) Lights – Optional "DPW"		NC
10) Water pump – Optional "DPW"		NC
11) Shrubs, "DPW"	=	\$1,000
No water provided.		
No electricity provided		
TOTAL		= \$5,400

Option 2:

- 1) Full service “turnkey” fence installation
40 x 80 ft including all required work.
Post coated and all hardware and custom
gate. See attached quote.

This is the same company that put in the put-
put and Dog Park at Lake Front Park. \$16,875

- 2) Full service “turn key “gate bar code reader
installation. See attached quote. \$8,878

- 3) Shrubs for Mack Ave 40 x Ft \$1,500

- 4) Water and electric provided by DPW

Total cost full service “Turn Key “ \$27,253

ALL POINTES FENCING

Estimate

E1011

Date 9/1/2022

Bill To
The City of Grosse Pointe Woods 2025 Mack Plaza Grosse Pointe Woods, MI 48236 Phone (313) 343-2440

Ship To
All Pointes Fencing Plus, LLC 33115 W Jefferson Avenue Brownstown Township, MI 48173 Phone (313) 821-8812

PO Number	Terms	Project
1853	50% deposit and the rest on completio	4' Tall Commercial Chain Link Fence

Date	Description	Amount
	<p>All Pointes Fencing cannot be held responsible for any personal electrical, gas, drainage or sprinkler systems that may get damaged through the digging process or through the process of driving steel posts into the ground.</p> <p>Install 5 - 3" x 7' schedule 30 galvanized steel gate posts into the ground at a depth of 42" using concrete as a footer.</p> <p>Drive 56 - 2" x 8' schedule 20 galvanized steel fence posts in the ground at a depth of 4' using a gas powered post driver.</p> <p>Hang, stretch and tie 596' of 4' tall galvanized commercial 9 gauge chain link fence including 596' of 1-5/8" galvanized top rail including all hardware.</p> <p>Hang a 4' x 4' galvanized commercial 9 gauge chain link walk through gate including hinges and a fork latch.</p> <p>Remove all fence construction related debris and haul away.</p> <p>3 year guarantee with the workmanship.</p> <p>Final cost including materials, installation and tax.</p>	\$16,875.00

Total \$16,875.00

ACCEPTANCE OF PROPOSAL	
<p>The above process, specifications and conditions are satisfactory and are hereby accepted. You are authorized to do the work as specified. Payments will be made as outlined above.</p>	
Signature _____	Signature <u><i>[Handwritten Signature]</i></u>
Date _____	Signature _____



Prudential Alarm

Grosse Pointe Woods City Hall Dog Park
 20025 Mack Plaza Dr
 Grosse Pointe Woods, MI 48236

(313) 882-1964
 stevelorenzglm@gmail.com

ESTIMATE	#2851
ESTIMATE DATE	Sep 01, 2022
TOTAL	\$8,878.00

CONTACT US
 20600 Eureka Rd, Suite 100
 Taylor, MI 48180

(800) 252-0368
 info@prudentialalarms.com

ESTIMATE

Services	qty	unit price	amount
Installation and Programming - Access Control (PDK) - Dog Park	1.0	\$3,655.00	\$3,655.00

Installation and Programming - Access Control (PDK) - Dog Park
 Install a Barcode Reader and Gate Lock for entry into the Dog Park using Ubiquiti Point to Point for Connectivity.

Materials	qty	unit price	amount
Pro Data Key - PDK Red Cloud Note Ethernet PDK RCNE Red CloudNode with Built-in Single io Door Controller - Ethernet Only	1.0	\$975.00	\$975.00
Pro Data Key - ProdataKey RDRQR QR Reader, Metal, Prox (125khz) & Weigand ProdataKey RDRQR QR Reader, Metal, Prox (125khz) & Weigand	1.0	\$629.50	\$629.50
Camera Accessories - Altelix Weatherproof Enclosure w/ Fan & Heater Altelix 16x12x8 Vented Fiberglass Weatherproof NEMA Enclosure with Cooling Fan, 200W Heater and 120 VAC Outlets	1.0	\$1,029.50	\$1,029.50
Conduit and Mounting Material Conduit and Mounting Material	1.0	\$295.00	\$295.00
Wire - 22/6 Plenum Wire 22/6 Plenum Wire 500"	1.0	\$195.00	\$195.00
Wire - 18/2 Plenum Wire 18/2 Plenum Wire 500"	1.0	\$155.00	\$155.00
Gate Hardware - Securitron GL1FL	1.0	\$535.00	\$535.00

SECURITRON 2000LB GATE LOCK

Gate Hardware - Securitron FMKSW SECURITRON GL1 SWING GATE MOUNTING KIT	1.0	\$191.50	\$191.50
Switches - Ubiquiti Antenna's Ubiquiti NSM5 Bundle of 2 NanoStation M5 5GHz Outdoor airMAX CPE 150+Mbps 15+km	1.0	\$550.00	\$550.00
Wire - CAT 5 Plenum Wire CAT5 Plenum Wire	1.0	\$297.50	\$297.50

Power Supplies - Altronix AL175ULB Access Control Power Supply Charger Altronix AL175ULB Access Control Power Supply Charger with 2 PTC Class 2 Outputs, 12/24VDC at 1.75A, Board	1.0	\$155.00	\$155.00
Panel Back up Battery Panel Back up Battery	1.0	\$65.00	\$65.00

Panel Back up Battery

Key Scan - Rex Button	1.0	\$95.00	\$95.00
PB2E Request to exit button			

Pro Data Key - Camden Weather Proof Lift Cover	1.0	\$55.00	\$55.00
Camden CM-CPC1 Vandal & Weather Resistant Clear Lift Cover for Camden Single Gang or Key Switch			

Subtotal	\$8,878.00
----------	------------

Total	\$8,878.00
--------------	-------------------

50% down and 50% on Job Completion

Installation and Programming - Access Control (PDK) - Dog Park

Install a Barcode Reader and Gate Lock for entry into the Dog Park using Ubiquiti Point to Point for Connectivity. (1 Gate Door)

*Power to be provided by GPW

*Internet - Data Port to be provided by GPW

\$10 per month for PDK Cloud Access

**May require some budgetary changes should parts cost increase or by the gate selected

rreader

QR Reader

The QR Reader is equipped with a rugged, backlit keypad and is designed to withstand severe weather conditions. Built for applications that integrate QR and bar-code scanning, the QR Reader even offers the ability to unlock doors with proximity credentials and PINs, as well as the flexibility to configure two-factor authentication.

Model

PN: RDRQR

Specifications:

Input

QR

Bar Code

Prox

Frequency: 125 kHz

Read Range: up to 1.1"



Output

Wiegand protocol

Cable Distance: Wiegand 500' (22 AWG)

Environmental

Temperature: -4° ~ +122° F or -20° ~ +60° C

Humidity: 0 - 95% relative humidity, non-condensing

Protection Rating: IP65

Enclosure

Dimensions: (W x H x D) 3.3" x 4.6" x .98"

Weight: 0.75 lbs / 12 oz / 340 g

Power

12V DC (Linear power supply recommended)

Manufacturer's Limited Warranty

One to five-year warranty against defects in materials and workmanship. For full details, visit www.prodatakey.com/warranty Visit www.prodatakey.com/resources to access marketing, installation, and support resources. For questions about the POK Metal Reader, please contact support@prodatakey.com. **DATA SHEET**

Fundraising Opportunities:

- 1) Financial support by the endorsement of the GPW society.
- 2) Sale of commemorative bricks.
Installation by "DPW"
- 3) Community fundraising and park sponsorship.
\$250

Lucido and Associates

DE-Edwardo's

Ahee Jewelry

Hair Salon

Woods Spirits

Tellys Restaurant

Lous Pet Shop

Harper Woods veterinarians

Holly-Woff

Big Boy Restaurant

Champs BBQ

Bocci