

MEMO 23-20

TO: Frank Schulte, City Administrator
FROM: James Kowalski, Director of Public Services *J.K.*
DATE: August 4, 2023
SUBJECT: Recommendation – 2023 Sidewalk Cutting Program
AEW Project No. 0160-0471

During the Finance Committee meeting, a discussion was held regarding the proposed 2023/2024 construction projects. Included in discussion was the 2023 Sidewalk Cutting Program.

AEW received a proposal from Precision Concrete Cutting (PCC) of Holland, Michigan to complete a sidewalk concrete cutting program in the amount of \$27,000. They have reviewed the proposal and work completed by PCC in several nearby communities. They also reviewed their proposed unit prices and found them to be comparable to those provided in nearby communities. Birmingham, which has a much larger program, bid the project publicly and only received one bid, from PCC.

Based upon the recommendation of AEW, I concur that the contract for the 2023 Sidewalk Cutting Program be awarded to Precision Concrete Cutting (PCC), 1896 Goldeneye Drive, Holland, MI 49424 in the amount of \$27,000.00.

This is a budgeted item included in 2023/2024 fiscal year budget in the major streets sidewalk construction account no. 202-451-976.100 in the amount of \$5,400.00, the local streets sidewalk construction account no. 203-451-976.100 in the amount of \$13,500.00, and the water/sewer sidewalk construction account no. 592-537-976.100 in the amount of \$8,100.00.

I do not believe any benefit will accrue to the City by seeking further bids. Approved for Council Consideration:

Frank Schulte

Frank Schulte, City Administrator

8-9-23

Date

Fund Certification:

Account numbers and amounts have been verified as presented.

Shawn Murphy

Shawn Murphy, Treasurer/Comptroller

8-9-23

Date

RECEIVED
AUG 09 2023
CITY OF GROSSE POINTE WOODS
CLERK'S DEPARTMENT



ANDERSON, ECKSTEIN & WESTRICK, INC.
CIVIL ENGINEERS - SURVEYORS - ARCHITECTS

Shelby Township - Roseville - Livonia
586.726.1234 | www.aewinc.com

August 2, 2023

Jim Kowalski, DPW Director
City of Grosse Pointe Woods
20025 Mack Plaza
Grosse Pointe Woods, Michigan 48236-2397

Reference: **2023 Sidewalk Cutting Program**
Maintenance District Three
AEW Project No. 0160-0471

Dear Mr. Kowalski:

Attached is a proposal from Precision Concrete Cutting (PCC) to complete a sidewalk concrete cutting program in the City of Grosse Pointe Woods. The proposed project includes concrete cutting in the amount of \$27,000.

We have reviewed the proposal and work completed by PCC in several nearby communities. We have also reviewed their proposed unit prices and compared those provided in nearby communities. Birmingham, which has a much larger program, bid the project publicly but only received one bid from PCC. The unit prices provided for this program are comparable to those provided for similar programs in nearby communities. We believe the City would not see a benefit in seeking bids for the 2023 Sidewalk Cutting Program.

Therefore, we recommend the City execute the attached proposal for the **2023 Concrete Cutting Program** with **Precision Concrete Cutting** in the amount of **\$27,000.00**.

If you have any questions, please advise.

Sincerely,

Scott Lockwood, PE

Enclosure: PCC Proposal letter dated July 12, 2023

cc: Frank Schulte, City Administrator
Shawn Murphy, City Controller

M:\0160\0160-0471\Project Mgmt\Correspondence\RecAward.docx



July 12, 2023

City of Grosse Pointe Woods

Attn: Jim Kowalski, Director of Public Works
1200 Parkway Dr
Grosse Pointe Woods, MI 48236



Phone: (313) 363-1257 Email: jkowsalski@gpwmi.us

Subject: SIDEWALK TRIP HAZARD REMOVAL, Pilot Project for City of Grosse Pointe Woods, 2023

Jim,

We appreciate the consideration to perform a sidewalk project for the City of Grosse Pointe Woods. The total cost for this project will not exceed **\$27,000** based on your agreed scope, special job rate, and budget. Upon your review and acceptance of this document, **please sign and return** via email us at **info@PCCMich.com**.

We will provide our W-9 and our proof of insurance accordingly (an ACORD will be emailed directly to you by our insurance provider). Let us know if any additional information or documents are required before we begin work. We appreciate your consideration and the opportunity to provide our service.

Precision Concrete Cutting

Precision Concrete Cutting (PCC) has been removing trip hazards from uneven sidewalks and other concrete walkways across the nation for over 25 years. As the industry leader in technology and price, PCC can reduce liability associated with uneven sidewalks and help meet ADA compliance with a method more effective and less expensive than alternatives. PCC utilizes its patented tools and processes that it has developed and refined for trip hazard removal. Not only is trip hazard removal the specialty of PCC, it is the only thing we do. PCC has dozens of locations across the country. Precision Concrete, Inc. is the locally licensed business unit serving Michigan, Indiana, Central Illinois, and Missouri that leverages the proven tools, process, and training to provide this service.

The Advantage

The Precision Concrete Cutting (PCC) service removes the entire trip hazard from side to side on the entire sidewalk while other methods of repair often leave a portion of the trip hazard. Not only can PCC reach the edges of every sidewalk, we can remove trip hazards from virtually any angle and at any location. Trip hazards caused by cracked concrete or located in hard-to-reach places such as in gutters or adjacent to a wall, post, or railing will be eliminated without any damage to nearby impediments. **There is no other process of trip hazard removal available with the quality, flexibility, and diversity as that of PCC.**



Quality

The Precision Concrete Cutting (PCC) process involves the measurement of every sidewalk trip hazard identified. PCC inspects the sidewalks and takes specific measurements to identify and log each trip hazard size and location. These measurements are used to determine the size of repair that is required, and to guarantee that the repair is made to dimensional specifications.

The PCC finished repair is aesthetically pleasing, smooth, and of superior quality compared to alternatives. It does not leave grooves in the surface of the concrete, it is not uneven, and is left with an acceptable coefficient of friction that will not create slip hazards.



Environmental & Community Friendly

The Precision Concrete Cutting (PCC) process does not require heavy equipment in the work area. The PCC equipment is small and maneuvered about by individual employees. No damage is created to buildings, landscaping, irrigation systems or the surrounding environment. Complete cleanup of the work area is performed and dust abatement systems minimize dust. All removed materials are properly recycled.

Precision Concrete Cutting utilizes a patented dust collection system to keep dust to a minimum while performing its work. This is a great benefit over other repair processes that leave the area covered in concrete dust or slurry. PCC also cleans up the removed concrete and debris created while performing repairs and disposes (for recycle) it as part of the service. Being a complete solution, no follow-on tasks are required of City staff. Sidewalks remain open with only minor disruption while PCC moves through an area performing the trip hazard removals.



As a member of the U.S. Green Building Council (USGBC), we are proud of the fact that we reduce the impact to landfills and the environment as a result of our service. For example, removing and replacing 100 sidewalk panels would result in approximately 120,000 lbs. of concrete being removed with the like amount being hauled in new (average panel weight for 5' x 5' x 4" is over 1,200 lbs.). Using Precision Concrete Cutting, sidewalk trip hazard removal can be accomplished by removing around 750 lbs. of concrete that will be recycled (no heavy equipment or hauling is required). Remove and replacement work is minimized requiring very little, if any, new concrete. Also, there is no damage to trees or adjoining landscape with Precision Concrete Cutting.



Real Savings

Precision Concrete Cutting (PCC) leverages new technology and unique equipment to perform sidewalk repairs at a 70-80% cost savings compared to sidewalk replacement. It is estimated that this project will **save City of Grosse Pointe Woods over \$68,000 on repairs.**

Professional Plan and Approach

Precision Concrete Cutting (PCC) will conduct a pre-construction planning meeting with the City designated contact(s) using a Precision Concrete Project Manager to establish priorities, a high-level schedule for the project area and review risks/constraints and safety plans. A communication plan for residents in the work area will be established. Typically, a crew of three (the project manager and two skilled operators) will be deployed to the job site to begin work once the City gives the authorization to proceed and our schedules permit.

Precision Concrete Cutting (PCC) will deploy a well-marked light-duty pickup truck, van, and/or full logo trailer used to mobilize up to three (3) full sets of cutting equipment and operators. Safety cones are placed wherever the truck/van and trailer park and on the sidewalks in front and behind the operator area to assure pedestrian safety during cutting. All PCC staff (including project manager) wears high-visibility safety vests whenever they are outside their vehicle.



Cost and Scope

Precision Concrete Cutting (PCC) will perform a unique a SAW CUT solution (NOT GRINDING) for the City of Grosse Pointe Woods to remove sidewalk trip hazards, in contiguous area(s), to be determined by the city. PCC would typically bill for this project at the rate of \$54 per Inch-Foot ((IF) is defined as the average inch height of the trip hazard times the linear feet of the hazard). For this pilot project, PCC will perform up to 643 IF of trip hazard removal for a total cost of \$34,714. However, with a municipal pilot project discount applied, **total cost for this project will not exceed \$27,000. Billing will be based on actual work performed, without exceeding the approved pilot budget.**

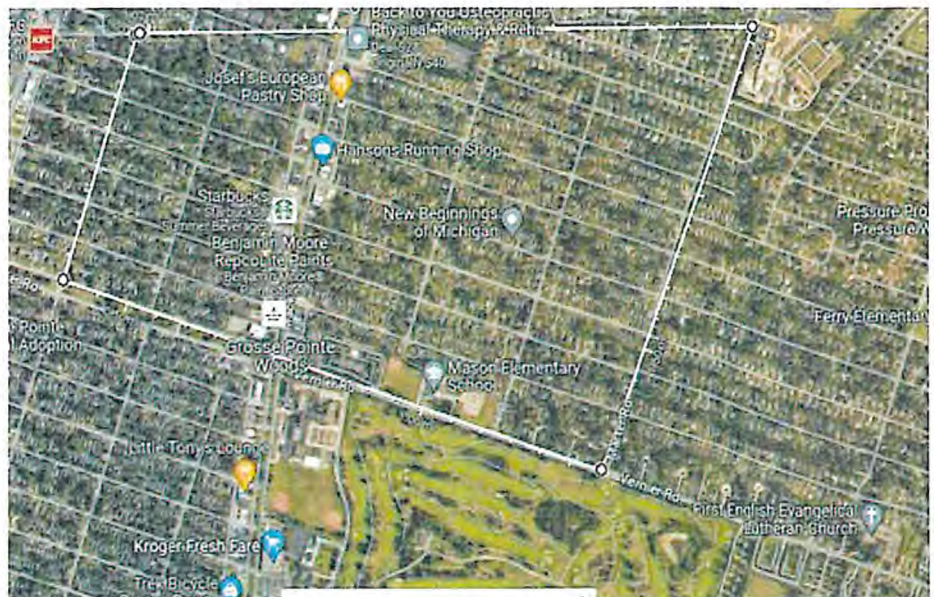
The scope of the sidewalk trip hazards is defined as a differential in the walkway of over .250" high but less than or equal to 2.0" high. Trip hazards will be eliminated leaving a maximum running slope (ramp) of 1:12 as permitted to meet ADA requirements wherever possible. The work will be performed on City sidewalks in the pilot project area(s), as prioritized by the city, up to the approved pilot project budget.

Job No. (Area)	Location	Estimated # of Trip Hazards to be Cut	Estimated Linear Feet	Estimated Inch Feet	Cost
1	District 3 Street - determined by City	125	525	164.06	\$8,859.38
2	District 3 Street - determined by City	125	525	164.06	\$8,859.38
3	District 3 Street - determined by City (as budget allows)	130	550	314.73	\$16,995.54
Totals		380	1,600	642.86	\$34,714.29

Additional Services:	\$0.00
Travel and Expenses:	\$0.00
Municipal Discount* :	-\$7,714.29
Net Proposed Total:	\$27,000.00

**Municipal discount will apply if project is accepted by August 31, 2023, and with an authorization to proceed with project by September 8, 2023.*

MAP: Work area(s) will be within District 3, specific streets to be determined by City



Sole Source Status

The technology that Precision Concrete Cutting uses to remove trip hazards is unique and has been developed and patented by Precision Concrete Cutting based in Provo, UT. Precision Concrete Cutting and its local branches are the only companies authorized to use the patented equipment and method for removing sidewalk trip hazards as described by the following patent numbers:

U.S. Patent No. 6,827,074
U.S. Patent No. 6,896,604
U.S. Patent No. 7,000,606

U.S. Patent No. 7,143,760
U.S. Patent No. 7,201,644
U.S. Patent No. 7,402,095

These patent numbers and the Precision Concrete Cutting (PCC) licensing agreement make Precision Concrete, Inc. a sole source for trip hazard removal in Michigan using this technology.

Invoicing

A Precision Concrete Cutting (PCC) invoice will be issued for work completed at the conclusion of each month. Municipal payment terms are net 30 days from the date work is completed unless contract states otherwise. PCC will not charge the City any additional fees for mobilization, setup, cleanup, or travel / expenses. All such fees are included in the contract unit price.

An itemized invoice listing the location of each trip hazard resolved will be listed and can be provided in hard copy or soft copy as required by the City. This itemized list provides the City with a completely auditable summary of the work performed by PCC. It is also a document that can support the fact that your organization has a proactive sidewalk maintenance program in place.

Summary

Precision Concrete Cutting is very interested in working with AEW to deliver a proactive and cost-effective sidewalk maintenance program to help with the efforts of ADA compliance and reduce liabilities associated with sidewalk trip hazards. Our goal is to develop a long-term relationship in which we can help the City of Grosse Pointe Woods achieve its annual sidewalk maintenance objectives.



Thank you for your consideration. Signature and date below confirms your acceptance of this project and intent to proceed.

Ben Johnson, Account Mgr.
and **Mark Bonkowski** (President)

Precision Concrete, Inc.
1896 Goldeneye Dr
Holland MI 49424

(248) 606-9161 Cell

(616) 403-1140 Office
(616) 582 - 5951 Fax

customer

authorized signature / date

printed name / title