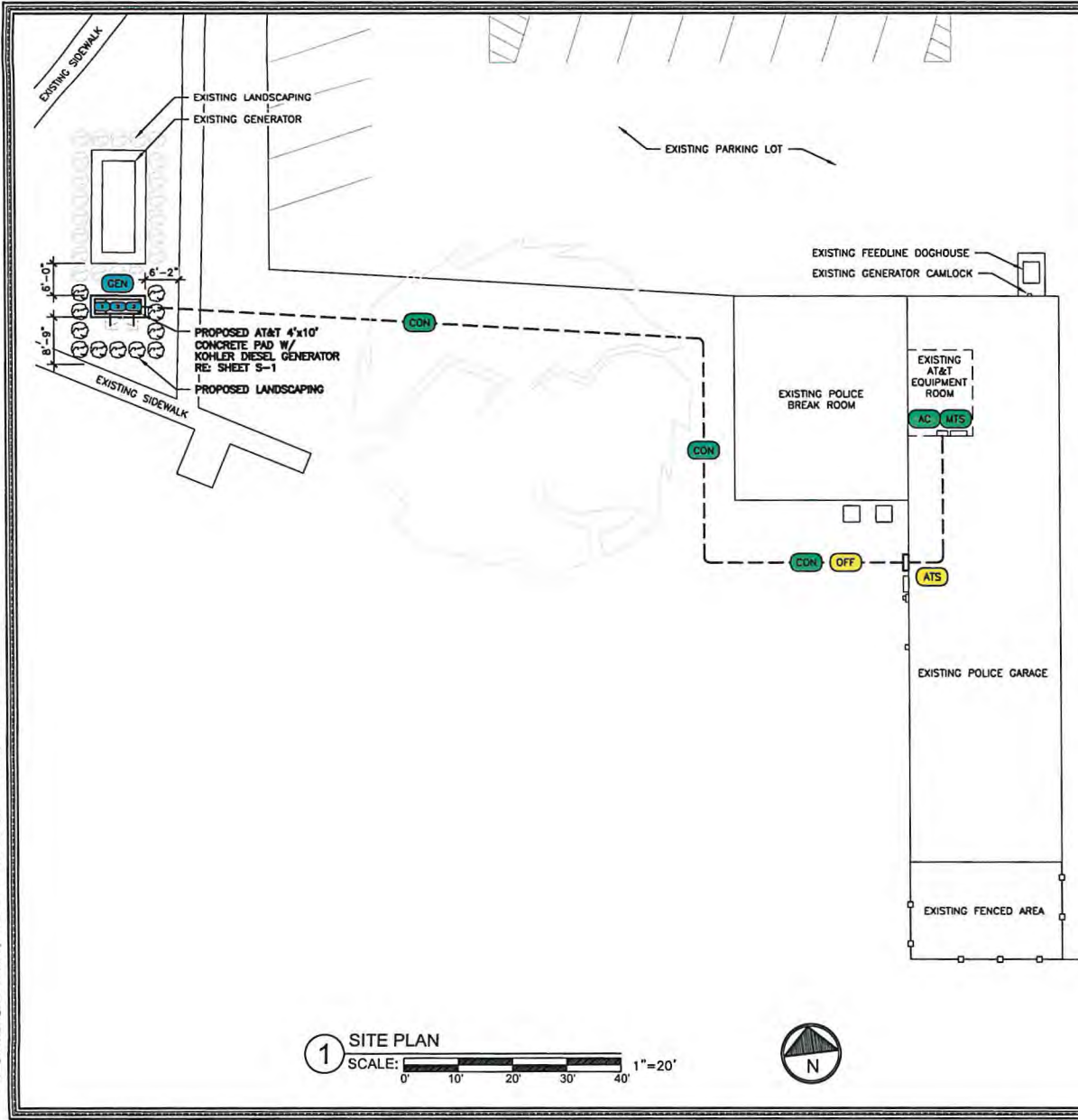


43533_10003371_Mack Plaza.dwg - Sheet A-1 - User: lampan - Nov 29, 2022 - 8:16am



1 SITE PLAN
 SCALE: 1" = 20'
 0' 10' 20' 30' 40'



- POWER ROUTING KEYED NOTES:**
- MTS** (E) AT&T A/C BREAKER PANEL/MANUAL TRANSFER SWITCH
 - INT** INTERCEPT (E) CONDUIT AND CONDUCTORS AND RE-ROUTE THROUGH NEW ATS (±30'-0"). COORDINATE PATH WITH CONSTRUCTION MANAGER
 - AC** (E) AT&T AC LOAD CENTER
 - CON** NEW AT&T UNDERGROUND GENERATOR CONDUIT ROUTE (±10'-0"). CONTRACTOR TO LOCATE (E) UTILITIES PRIOR TO EXCAVATION.
 - SUB** (E) AT&T 100A SUB-PANEL
- GENERATOR KEYED NOTES:**
- GEN** NEW AT&T 25KW DIESEL GENERATOR W/ SOUND ATTENUATED ENCLOSURE, NORMAL/EMERGENCY TANK ON A CONCRETE PAD. SEE ATTACHED SHEETS & S-1.
 - 1** FUEL FILL SHALL BE PROVIDED WITH SPILL CONTROL, WITH A SOLID FILL CONNECTION, AND WITH OVERFILL PREVENTION.
 - 2** FUEL TANK NORMAL AND EMERGENCY VENTS SHALL TERMINATE AT LEAST 12'-0" ABOVE THE ADJACENT GRADE.
 - 3** NFPA 704 PLACARD AND OTHER SIGNAGE.
- ATS/EQUIPMENT KEYED NOTES:**
- FIRE** FIRE EXTINGUISHER, (2A-20BC OR APPROVED EQUAL) PER IFC 906.3 IN FIRE EXTINGUISHER CABINET (BFC-7009 OR APPROVED EQUAL), MOUNTED TO BUILDING WALL OR UTILITY FRAME PER IFC 906.9 (5'-0" MAX ABOVE GRADE)
 - OFF** EMERGENCY SHUTOFF SWITCH. MOUNT TO BUILDING WALL OR UTILITY FRAME PER IFC 906.9 (5'-0" MAX ABOVE GRADE)
 - ATS** NEW ATS W/ CAMLOCK MOUNTED ON NEW UTILITY FRAME UNISTRUT RAILS WITH 36" FRONT CLEARANCE. SEE SHEET C-3.
 - H-FR** NEW UTILITY FRAME WITH UNISTRUT RAILS. SEE SHEET C-3.

NOTES:

CONTRACTOR TO CALL 811 OR OTHER LOCAL JOINT UTILITY LOCATOR SERVICE TO VERIFY THE LOCATION OF EXISTING UNDERGROUND UTILITIES PRIOR TO CONSTRUCTION.

SEE SHEETS E-1 & E-2 FOR CONDUIT & WIRING SPECIFICATIONS/SINGLE LINE DIAGRAM.

CHANGE ORDERS WILL NOT BE ACCEPTED FOR UNAPPROVED WORK.

RE: 4/E-1 FOR UTILITY TRENCH DETAILS.

RE: 6/E-1 FOR PROPANE/NATURAL GAS PIPING TRENCH

CONTRACTOR TO PURCHASE THE EXCEL SIGN "DIESEL GENERATOR COMBO PACK" P/N: ATT-DGCP-DC-BKIT AND SHALL PLACE THEM ON THE SITE PER AT&T STANDARDS.

ALL BELOW GRADE CONDUIT
 TO BE SCHEDULE 40 PVC
 UNLESS NOTED OTHERWISE.



GENERAL DYNAMICS
 9400 WILLIAMSBURG PLAZA
 LOUISVILLE, KY 40222

SITE #: 3501A0WP25
 FA: 10083371
MACK PLAZA
 20027 MACK PLAZA
 GROSSE POINTE, MI 48236
 EXISTING MONOPOLE

PROJECT NO: 145953.003.01
 CHECKED BY: GLS

ISSUED FOR:

REV	DATE	DRWN	DESCRIPTION
A	1/9/21	MDW	PRELIMINARY REVIEW
B	1/31/22	CLD	PRELIMINARY REVIEW
C	11/23/22	RWC	PRELIMINARY REVIEW
D	11/23/22	CLS	CONSTRUCTION

MTS ENGINEERING P.L.L.C.

11/23/22

IT IS A VIOLATION OF LAW FOR ANY PERSON, UNLESS THEY ARE ACTING UNDER THE DIRECTION OF A LICENSED PROFESSIONAL ENGINEER, TO ALTER THIS DOCUMENT.

SHEET NUMBER: **A-1** | REVISION: **0**

