



STUCKY VITALE ARCHITECTS
 27172 WOODWARD AVENUE
 ROTAL OAK, MI 48067-0925
 P. 248.546.6700
 F. 248.546.8454
 WWW.STUCKYVITALE.COM

STATEMENT OF INTELLECTUAL PROPERTY:
 THE IDEAS, CONCEPTS, DRAWINGS AND INVENTIONS
 CONTAINED HEREIN ARE THE INTELLECTUAL
 PROPERTY OF STUCKY VITALE ARCHITECTS. THIS SET
 OF DRAWINGS, IN WHOLE OR IN PART, MAY NOT BE
 REPRODUCED, WITHOUT THE WRITTEN CONSENT OF
 STUCKY VITALE ARCHITECTS. THIS DOCUMENT IS
 PROTECTED UNDER U.S. COPYRIGHT LAW. ALL
 RIGHTS RESERVED.

Consultants:

Project:

CRISPELLI'S BAKERY
 & PIZZERIA
 TENANT FIT OUT
 19850 MACK AVENUE
 GROSSE POINTE WOODS
 MICHIGAN 48236

Issued for:

Drawn by:

JPM

Checked by:

JAV, SMB

Sheet Title:

SITE PLAN DETAILS

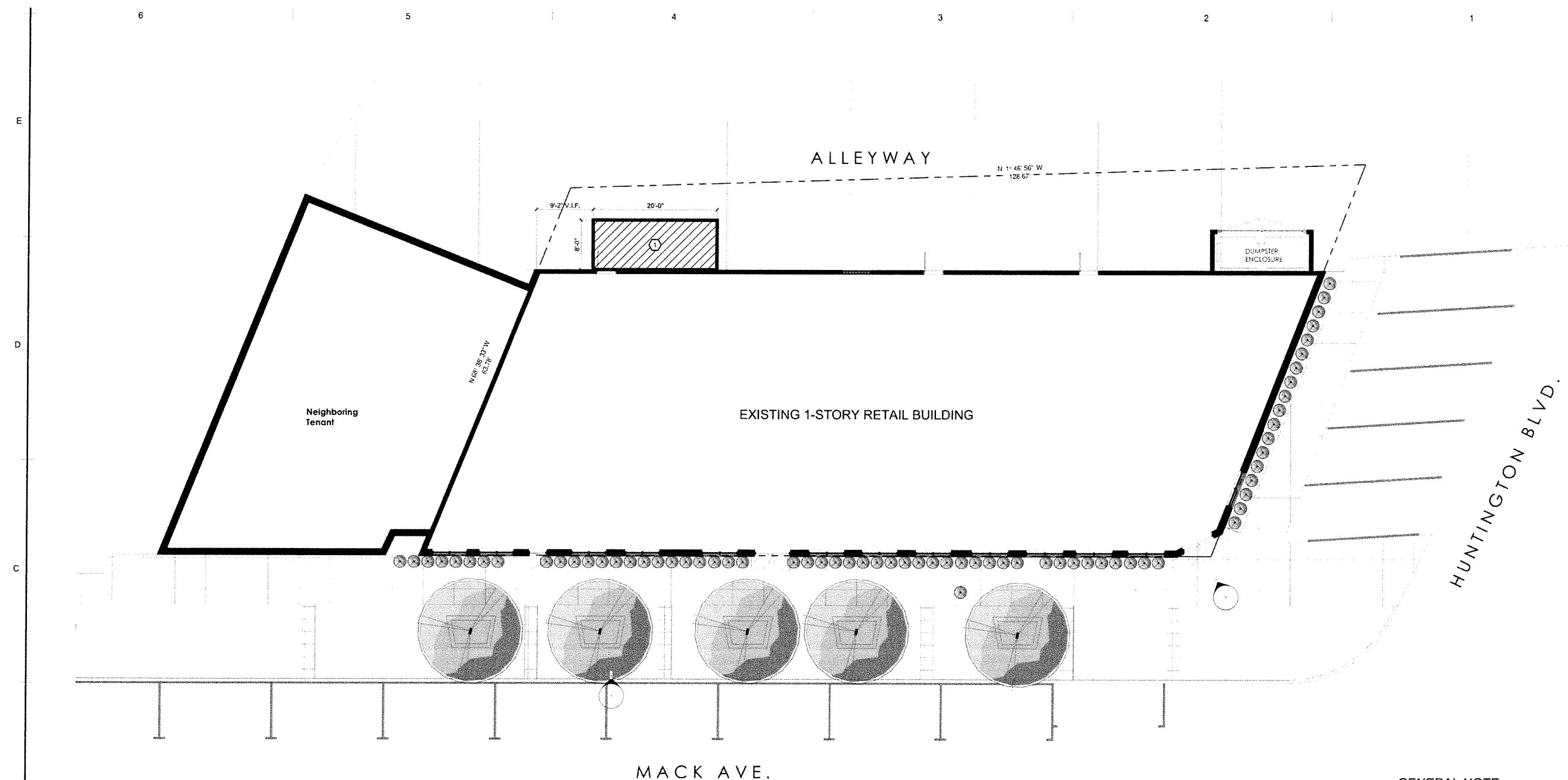
Project No.:

2023.029

Sheet No.:

AS100

DO NOT SCALE DRAWINGS
 © 2020 Stucky Vitale Architects



GENERAL SITE PLAN NOTES:

- PAVEMENT SHALL BE OF THE TYPE, THICKNESS AND CROSS SECTION AS INDICATED ON THE PLANS AND AS FOLLOWS.
- CONCRETE: PORTLAND CEMENT TYPE IA (AIR-ENTRAINED) WITH A MINIMUM CEMENT CONTENT OF SIX SACKS PER CUBIC YARD, MINIMUM 28 DAY COMPRESSIVE STRENGTH OF 3,500 PSI AND A SLUMP OF 1 1/2 TO 3 INCHES.
- ASPHALT: BASE COURSE - MDOT BITUMINOUS MIXTURE NO. 1100L, 20AA; SURFACE COURSE - MDOT BITUMINOUS MIXTURE NO. 1100T, 20AA; ASPHALT CEMENT PENETRATION GRADE 85-100, BOND COAT - MDOT SS-1H EMULSION AT 0.10 GALLON PER SQUARE YARD, MAXIMUM 2 INCH LIFT.
- PAVEMENT BASE SHALL BE COMPACTED TO 95% OF THE MAXIMUM DENSITY (MODIFIED PROCTOR) PRIOR TO PLACEMENT OF PROPOSED PAVEMENT. EXISTING SUB-BASE SHALL BE PROOF-ROLLED IN THE PRESENCE OF THE ENGINEER TO DETERMINE STABILITY.
- ALL CONCRETE PAVEMENT, DRIVEWAYS, CURB & GUTTER, ETC. SHALL BE SPRAY CURED WITH WHITE MEMBRANE CURING COMPOUND IMMEDIATELY FOLLOWING FINISHING OPERATION.
- ALL CONCRETE PAVEMENT JOINTS SHALL BE FILLED WITH HOT POURED RUBBERIZED ASPHALT JOINT SEALING COMPOUND IMMEDIATELY AFTER SAWCUT OPERATION. FEDERAL SPECIFICATION SS-S194.
- ALL WORKMANSHIP AND MATERIALS SHALL BE IN ACCORDANCE WITH THE CURRENT STANDARDS AND SPECIFICATIONS OF THE MUNICIPALITY AND THE MICHIGAN DEPARTMENT OF TRANSPORTATION STANDARD SPECIFICATIONS FOR CONSTRUCTION, CURRENT EDITION.
- FOR ANY WORK WITHIN THE PUBLIC RIGHT-OF-WAY, THE CONTRACTOR SHALL PAY FOR AND SECURE ALL NECESSARY PERMITS AND LIKEWISE ARRANGE FOR ALL INSPECTION.
- COORDINATE ALL WORK WITH LANDLORD DRAWINGS PRIOR TO COMMENCING.

SITE PLAN KEY NOTES:

(TYPICAL THIS SHEET ONLY)

- 1 NEW WALK-IN COOLER LOCATION

ARCHITECTURAL SITE PLAN
 SCALE: 1/8" = 1'-0"
 COOLER LOCATION DETAIL

GENERAL NOTE:

SITE PLAN INFORMATION BASED ON PREVIOUS CITY SUBMITTAL BY LANDLORD ARCHITECT OF RECORD INCLUDED HERE FOR REFERENCE ONLY



STUCKY VITALE ARCHITECTS
 27172 WOODWARD AVENUE
 ROYAL OAK, MI 48067-0925
 P. 248.546.6700
 F. 248.546.8454
 WWW.STUCKYVITALE.COM

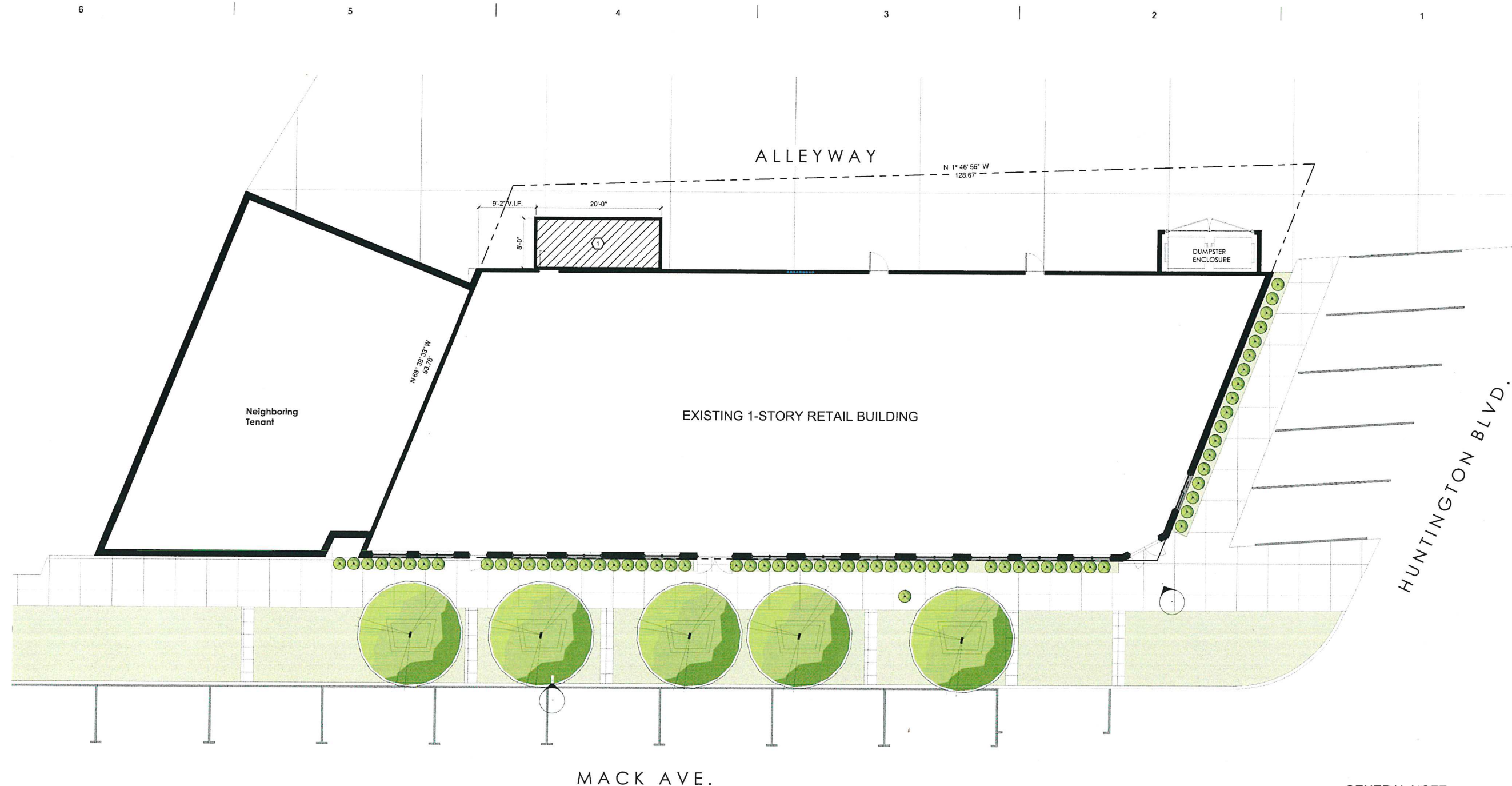
STATEMENT OF INTELLECTUAL PROPERTY:
 THE IDEAS, CONCEPTS, DRAWINGS AND THOUGHTS
 CONVEYED HEREIN ARE THE INTELLECTUAL
 PROPERTY OF STUCKY VITALE ARCHITECTS. THIS SET
 OF DRAWINGS, IN WHOLE OR IN PART, MAY NOT BE
 REPRODUCED, WITHOUT THE WRITTEN CONSENT OF
 STUCKY VITALE ARCHITECTS. THIS INFORMATION IS
 PROTECTED UNDER U.S. COPYRIGHT LAW, ALL
 RIGHTS RESERVED.

Consultants:

Project :

CRISPELLI'S BAKERY
 & PIZZARIA
 TENANT FIT OUT
 19850 MACK AVENUE
 GROSSE POINTE WOODS
 MICHIGAN 48236

Issued for :



GENERAL SITE PLAN NOTES:

- PAVEMENT SHALL BE OF THE TYPE, THICKNESS AND CROSS SECTION AS INDICATED ON THE PLANS AND AS FOLLOWS.
- CONCRETE: PORTLAND CEMENT TYPE IA (AIR-ENTRAINED) WITH A MINIMUM CEMENT CONTENT OF SIX SACKS PER CUBIC YARD, MINIMUM 28 DAY COMPRESSIVE STRENGTH OF 3,500 PSI AND A SLUMP OF 1 1/2 TO 3 INCHES.
- ASPHALT: BASE COURSE - MDT BITUMINOUS MIXTURE NO. 1100L, 20AA; SURFACE COURSE - MDT BITUMINOUS MIXTURE NO. 1100T, 20AA; ASPHALT CEMENT PENETRATION GRADE 85-100, BOND COAT - MDT SS-1H EMULSION AT 0.10 GALLON PER SQUARE YARD, MAXIMUM 2 INCH LIFT.
- PAVEMENT BASE SHALL BE COMPACTED TO 95% OF THE MAXIMUM DENSITY (MODIFIED PROCTOR) PRIOR TO PLACEMENT OF PROPOSED PAVEMENT. EXISTING SUB-BASE SHALL BE PROOF-ROLLED IN THE PRESENCE OF THE ENGINEER TO DETERMINE STABILITY.
- ALL CONCRETE PAVEMENT, DRIVEWAYS, CURB & GUTTER, ETC., SHALL BE SPRAY CURED WITH WHITE MEMBRANE CURING COMPOUND IMMEDIATELY FOLLOWING FINISHING OPERATION.
- ALL CONCRETE PAVEMENT JOINTS SHALL BE FILLED WITH HOT POURED RUBBERIZED ASPHALT JOINT SEALING COMPOUND IMMEDIATELY AFTER SAWCUT OPERATION. FEDERAL SPECIFICATION SS-S164.
- ALL WORKMANSHIP AND MATERIALS SHALL BE IN ACCORDANCE WITH THE CURRENT STANDARDS AND SPECIFICATIONS OF THE MUNICIPALITY AND THE MICHIGAN DEPARTMENT OF TRANSPORTATION STANDARD SPECIFICATIONS FOR CONSTRUCTION, CURRENT EDITION.
- FOR ANY WORK WITHIN THE PUBLIC RIGHT-OF-WAY, THE CONTRACTOR SHALL PAY FOR AND SECURE ALL NECESSARY PERMITS AND LIKEWISE ARRANGE FOR ALL INSPECTION.
- COORDINATE ALL WORK WITH LANDLORD DRAWINGS PRIOR TO COMMENCING.

SITE PLAN KEY NOTES:

(TYPICAL THIS SHEET ONLY)

- 1 NEW WALK-IN COOLER LOCATION

ARCHITECTURAL SITE PLAN
 SCALE: 1/8" = 1'-0"
 COOLER LOCATION DETAIL

GENERAL NOTE:

SITE PLAN INFORMATION BASED ON PREVIOUS CITY SUBMITTAL BY LANDLORD ARCHITECT OF RECORD INCLUDED HERE FOR REFERENCE ONLY

Drawn by:
JPM

Checked by:
JAV, SMB

Sheet Title:
SITE PLAN DETAILS

Project No. :
2023.029

Sheet No. :
AS100

DO NOT SCALE DRAWINGS
 © 2020 Stucky Vitale Architects