

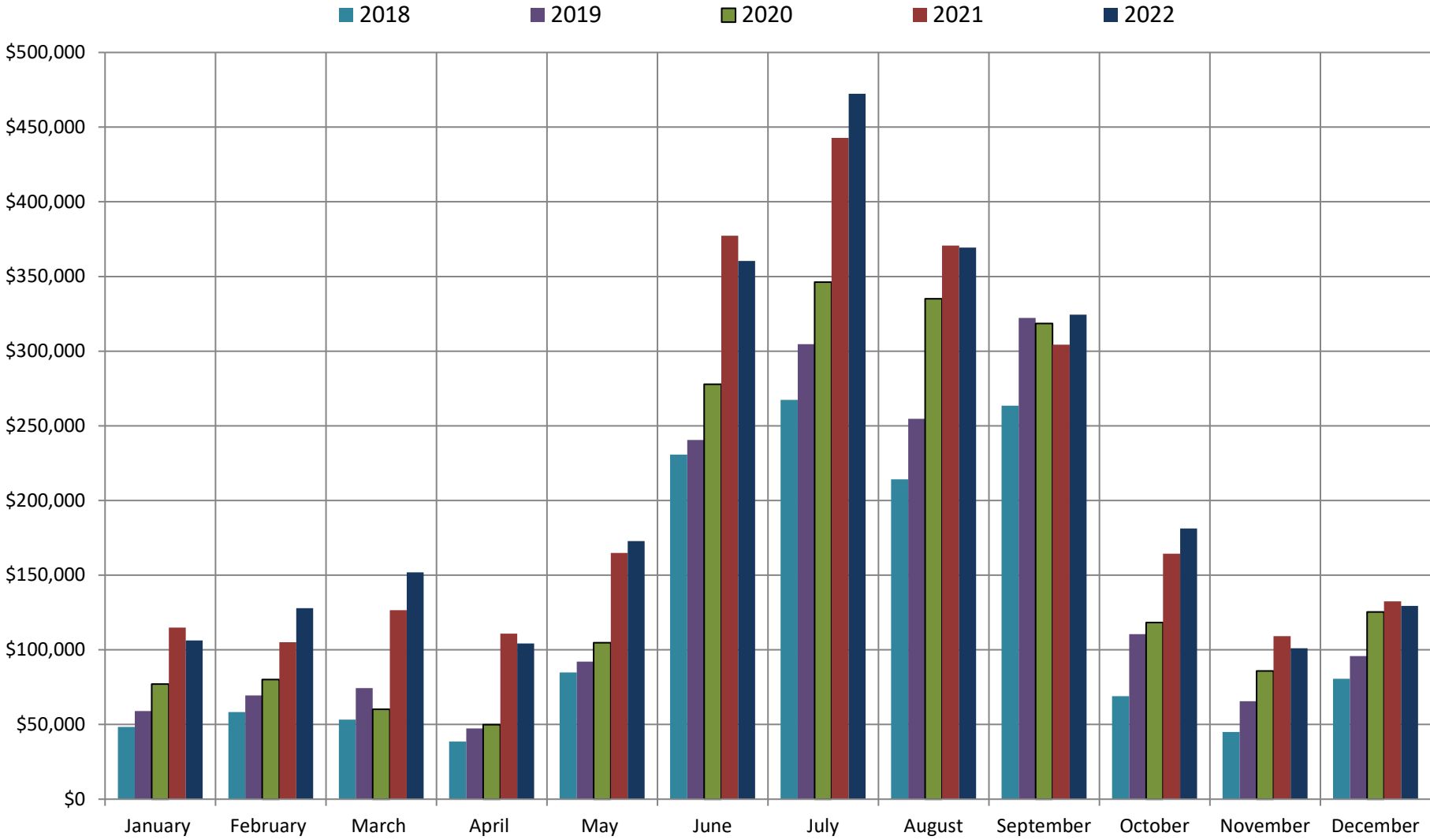
**4% SALES TAX CASH FLOW REPORT:  
TOWN OF GRAND LAKE  
FISCAL YEAR 2022**

<b>Sales Month</b>	<b>2022</b>	<b>2021</b>	<b>Fiscal Year 2020</b>	<b>2019</b>	<b>2018</b>
January	\$106,350	\$114,888	\$77,149	\$58,933	\$48,333
February	\$127,918	\$105,125	\$80,166	\$69,478	\$58,344
March	\$151,941	\$126,469	\$60,184	\$74,443	\$53,192
April	\$104,344	\$110,867	\$49,912	\$47,378	\$38,591
May	\$172,788	\$164,901	\$104,689	\$92,138	\$84,862
June	\$360,464	\$377,346	\$277,913	\$240,589	\$230,804
July	\$472,409	\$442,768	\$346,264	\$304,721	\$267,371
August	\$369,399	\$370,626	\$335,005	\$254,709	\$214,246
September	\$324,475	\$304,337	\$318,513	\$322,285	\$263,514
October	\$181,308	\$164,428	\$118,313	\$110,559	\$68,969
November	\$100,997	\$109,224	\$85,868	\$65,583	\$44,932
December	\$129,464	\$132,476	\$125,334	\$95,751	\$80,654

**YEAR TO DATE CASH FLOW COMPARISON**

	<b>Year to Date Total</b>	<b>Percent of Budget</b>	<b>Percent change from previous Year to Date</b>	<b>Dollar change from previous Year to Date</b>	<b>Budgeted Amount</b>
<b>2022</b>	\$2,601,856	105.72%	3.11%	\$ 78,401.40	\$2,461,018
<b>2021</b>	\$2,523,455	144.87%	27.49%	\$ 544,143.92	\$1,741,825
<b>2020</b>	\$1,979,311	119.29%	13.98%	\$ 242,743.66	\$1,659,230
<b>2019</b>	\$1,736,567	124.13%	30.74%	\$ 408,340.53	\$1,398,967
<b>2018</b>	\$1,328,227	104.56%	3059.69%	\$ 1,286,190.02	\$1,270,354

# 4% SALES TAX CASH FLOW 2022 YTD through December



**1% SALES TAX CASH FLOW REPORT:  
TOWN OF GRAND LAKE  
FISCAL YEAR 2022**

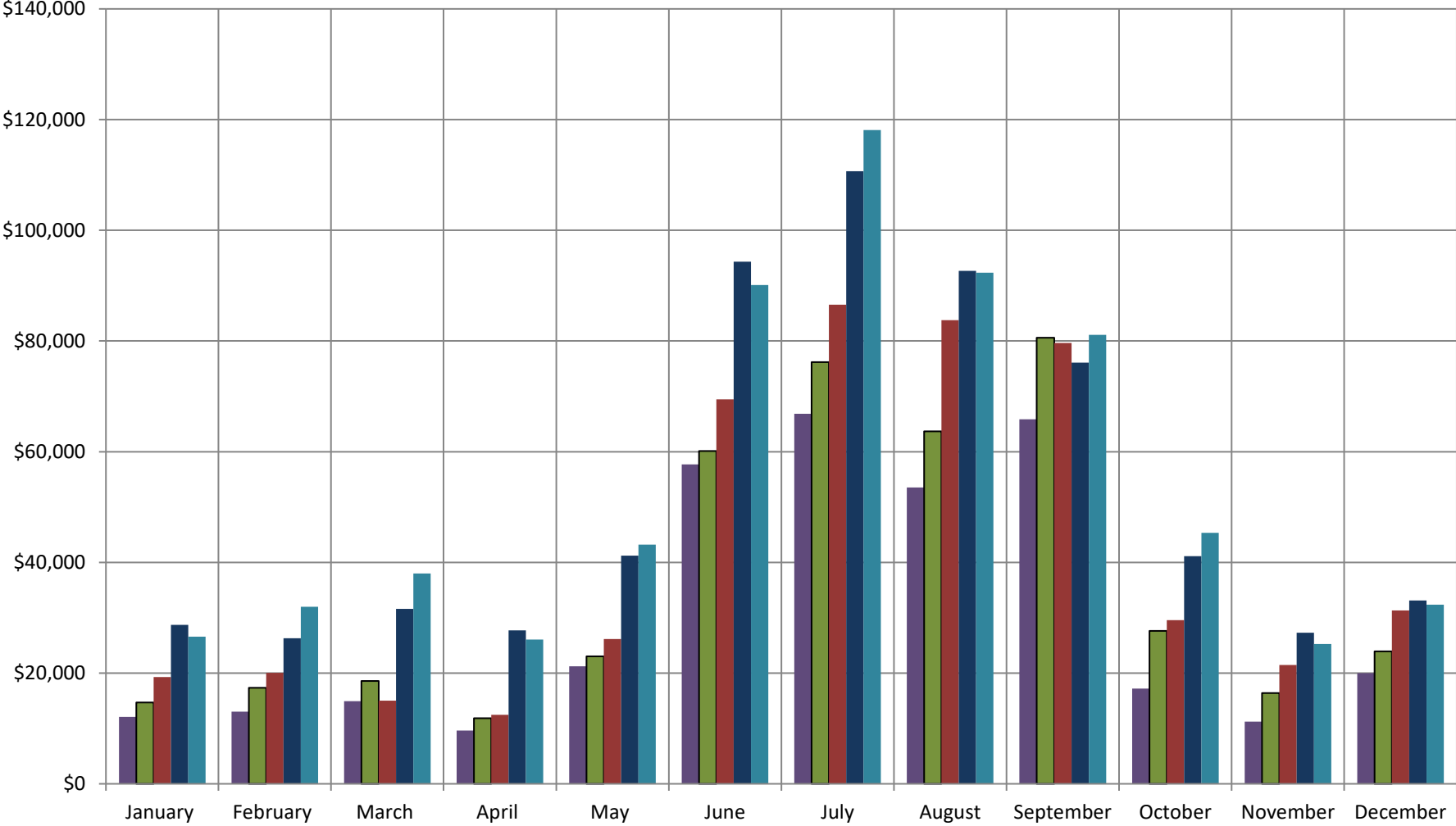
Sales Month	FISCAL YEAR				
	2022	2021	2020	2019	2018
January	\$26,587	\$28,722	\$19,287	\$14,712	\$12,082
February	\$31,979	\$26,281	\$20,042	\$17,367	\$13,041
March	\$37,985	\$31,617	\$15,046	\$18,583	\$14,915
April	\$26,086	\$27,717	\$12,478	\$11,844	\$9,638
May	\$43,197	\$41,225	\$26,172	\$23,035	\$21,219
June	\$90,116	\$94,336	\$69,478	\$60,147	\$57,697
July	\$118,102	\$110,692	\$86,566	\$76,180	\$66,841
August	\$92,350	\$92,656	\$83,751	\$63,677	\$53,530
September	\$81,119	\$76,084	\$79,628	\$80,571	\$65,870
October	\$45,327	\$41,107	\$29,578	\$27,640	\$17,200
November	\$25,249	\$27,306	\$21,467	\$16,396	\$11,248
December	\$32,366	\$33,119	\$31,333	\$23,938	\$19,978

**YEAR TO DATE CASH FLOW COMPARISON**

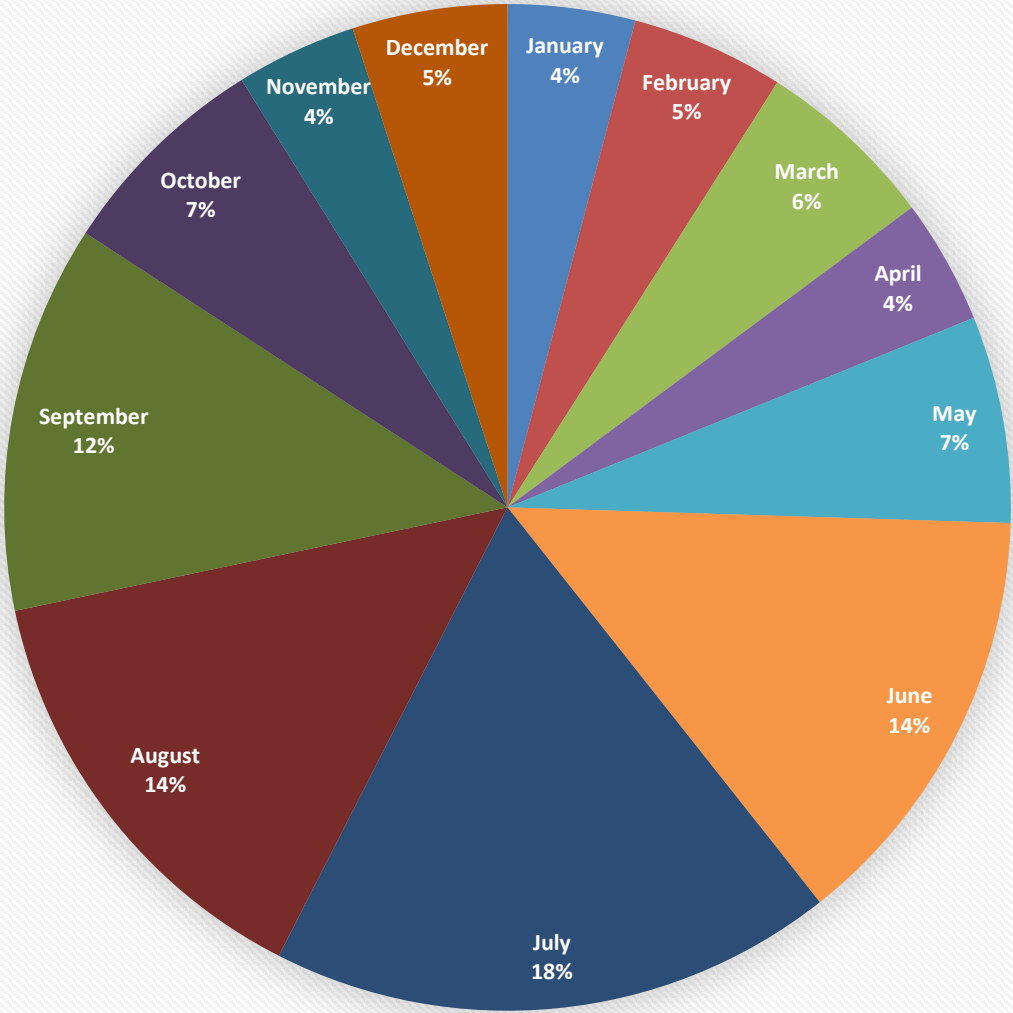
	Year to Date Total	Percent of Budget	Percent change from previous Year to Date	Dollar change from previous Year to Date	Budgeted Amount
<b>2022</b>	\$650,464	105.72%	3.11%	\$ 19,600	\$615,252.00
<b>2021</b>	\$630,864	145.03%	27.49%	\$ 136,036	\$435,000.00
<b>2020</b>	\$494,828	111.04%	13.99%	\$ 60,738	\$445,635.00
<b>2019</b>	\$434,090	121.98%	19.50%	\$ 70,830	\$355,882.00
<b>2018</b>	\$363,261	115.88%	3501.79%	\$ 353,175	\$313,491.00

# 1% SALES TAX CASH FLOW 2022 YTD through Sept

2018 2019 2020 2021 2022



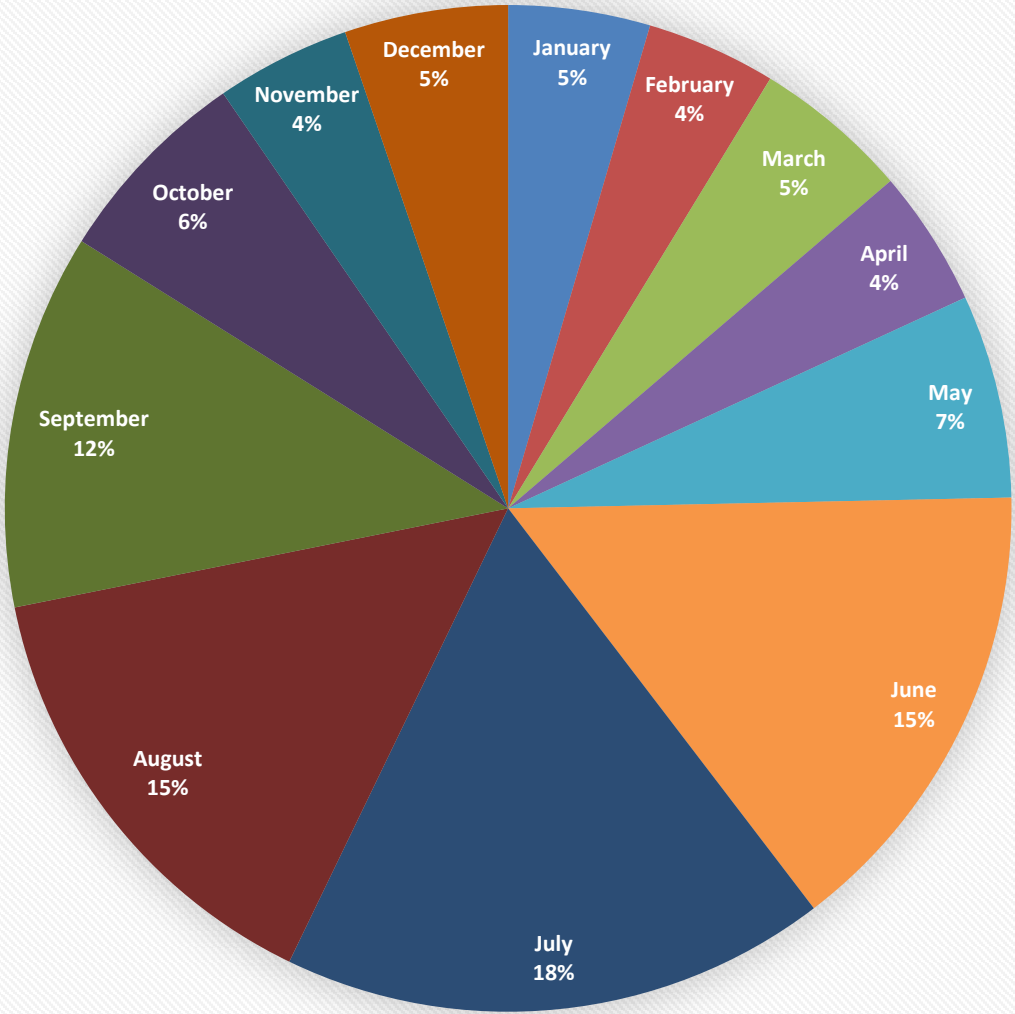
# % of Sales Tax revenues per month for YTD 2022



■ January ■ February ■ March ■ April ■ May ■ June ■ July ■ August ■ September ■ October ■ November ■ December

■ January

# % of Sales Tax revenues per month for YTD 2021



ary February March April May June July August September October November December