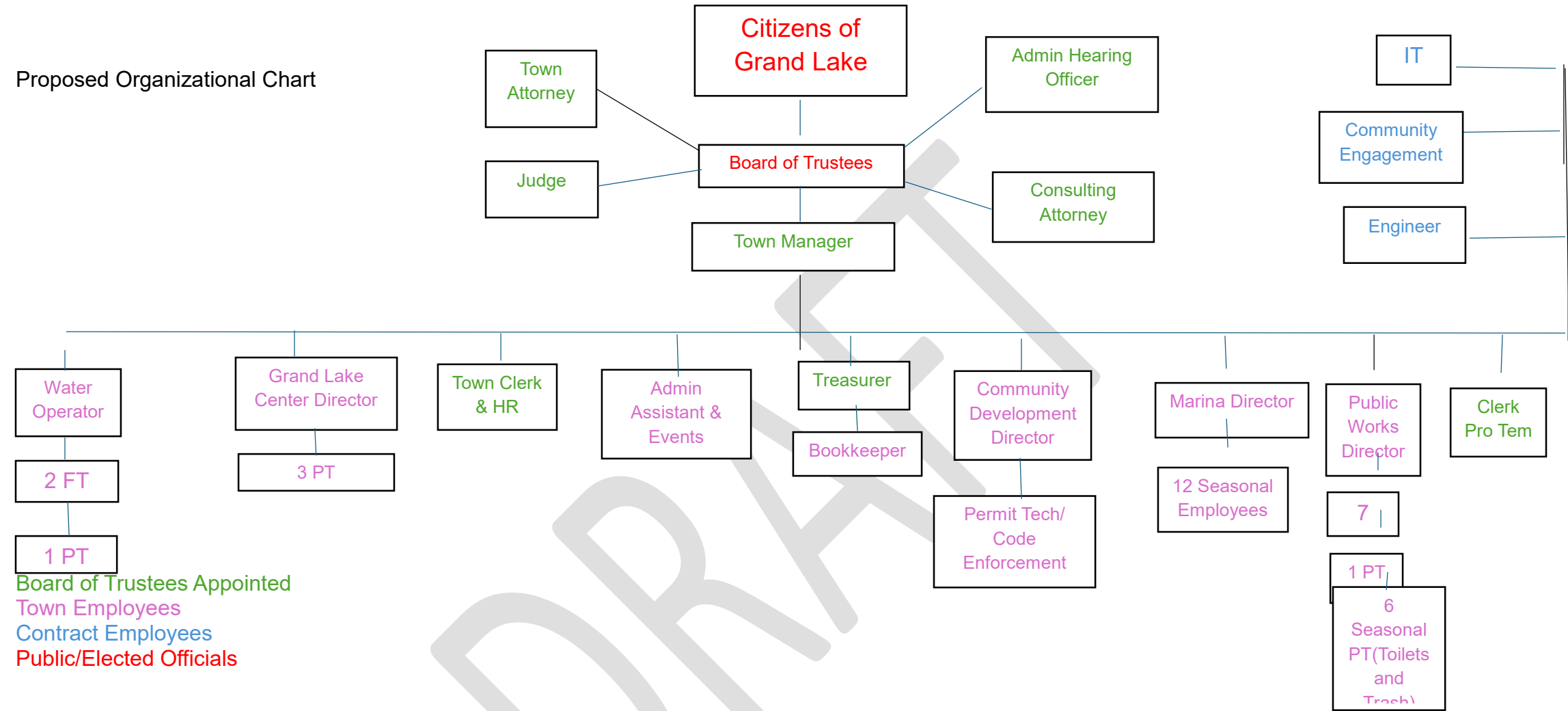


Proposed Organizational Chart



- \*Add three PT employees to Grand Lake Center sharing with GLFPD through their internship program.
- \*Put Administrative Assistant & Events under Town Manager
- \*Put Bookkeeper under Treasurer
- \*Add Permit Tech/Code Enforcement under Community Development Director
- \*Add 6 seasonal PT foreign employees shared with local businesses to perform “toilets and trash” duties
- \*Turn Community Engagement into contract position
- \*Elevate Grand Lake Center Manager to Director status