

# Granby-Grand Lake Connector



# Purpose of Today's Discussion



Confirm alignment across partner jurisdictions for the Granby-Grand Lake Connector (GGL) service



Discuss what's already been funded



Outline steps towards service launch

# What is the GGL Connector?

- A **year-round** regional connection between Granby & Grand Lake
- Currently budgeted as **3 round-trips**, daily
- Connections Granby Train Depot ↔ Grand Lake
  - Provides **seasonal connections** to RMNP
- **Timed connections** to regional transit service
  - Granby Commuter
  - Mountain Passenger Rail



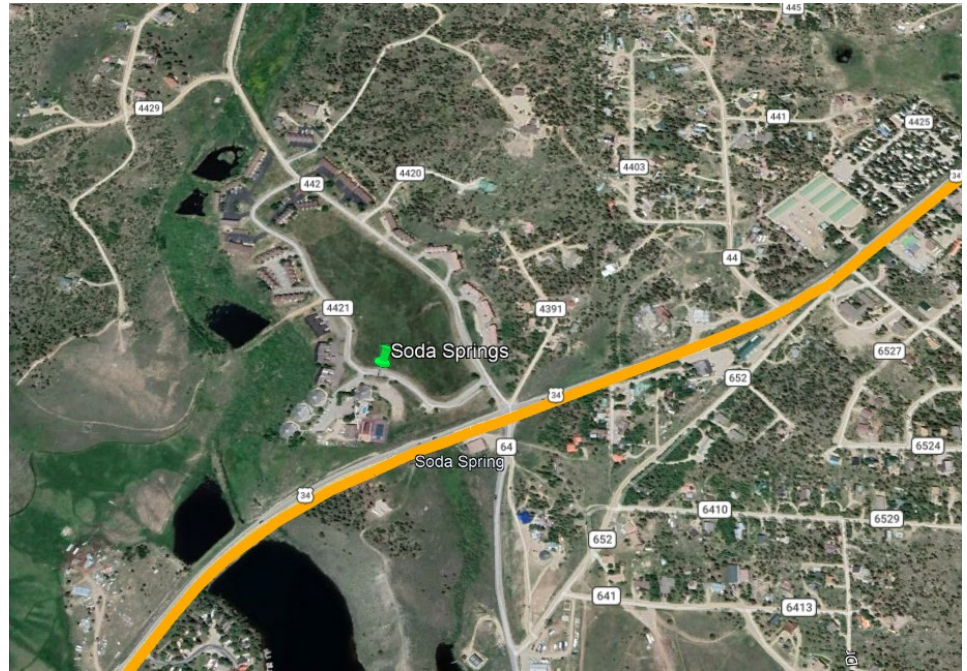
# Proposed Granby Stops

- **5<sup>th</sup> & Agate**
  - *Transfer for Granby Commuter riders*
- **Granby Train Depot**
- **Granby Trails**



# Proposed Grand County

- Soda Springs Ranch





# Costs & Funding

Costs*				
	Granby	Grand County	Grand Lake	TOTAL
# of Stops	3	1	2	6
% of Cost	50%	17%	33%	100%
<b>Operations Cost</b>	<b>\$ 101,630.00</b>	<b>\$ 33,876.67</b>	<b>\$ 67,753.33</b>	<b>\$ 203,260.00</b>
<i>IGA Admin Fee</i>	<i>\$ 10,163.00</i>	<i>\$ 3,387.67</i>	<i>\$ 6,775.33</i>	
<b>Total Cost</b>	<b>\$ 111,793.00</b>	<b>\$ 37,264.33</b>	<b>\$ 74,528.67</b>	
Funding				
<b>SB-230</b>	<b>\$ (81,304.00)</b>	<b>\$ (27,101.33)</b>	<b>\$ (54,202.67)</b>	<b>\$ (162,608.00)</b>
<b>1A</b>	<b>\$ (20,326.00)</b>	<b>\$ (6,775.33)</b>	<b>\$ (13,550.67)</b>	<b>\$ (40,652.00)</b>
<b>Local \$ Due</b>	<b>\$ 10,163.00</b>	<b>\$ 3,387.67</b>	<b>\$ 6,775.33</b>	<b>\$ -</b>
<b>Total Due</b>	<b>\$ 10,163.00</b>	<b>\$ 3,387.67</b>	<b>\$ 6,775.33</b>	<b>\$ -</b>

\*Costs shown reflect service between **June – Dec 2026**

\*\*To-date, operating costs for this service are fully grant-funded

# Benefits to Granby



Strengthens Granby's role as a regional mobility hub



Direct rail connection and regional connections via bus service



Economic and access benefits for residents and visitors

# Benefits to Grand Lake



Reliable transit access for visitors and workforce



Greater regional connectivity



Supports local economy while managing peak-season impacts

# Benefits to Grand County



Expanded regional service connecting service and employment centers



Expands multi-modal options available in the County



Efficient use of state and county funding for regional benefit

# Governance Structure



Service operated through The Lift



Intergovernmental Agreements (IGA) define roles and admin cost recovery



Clear separation between funded operations and local administration

# What Remains to Finalize



**Execution of IGA's between partners**



**Public outreach events**

Granby  
Grand Lake

# Questions?

**Charles McCarthy** | Winter Park  
Transit Manager  
970.726.8081  
[cmccarthy@wpgov.com](mailto:cmccarthy@wpgov.com)

**Michael Koch** | Compass Transit  
Consulting  
970.581.8155  
[michael@compasstc.net](mailto:michael@compasstc.net)

