

**PROJECT NOTES:**

**WHAT IS THE ROCKY MOUNTAIN FOLK SCHOOL/ BOAT SCHOOL PORTABLE COMMUNITY WORKSHOP?**

- THIS WORKSHOP SPACE IS DESIGNED TO SERVE AS A TEMPORARY FLAGSHIP BASE FOR THE ROCKY MOUNTAIN WOODEN FOLK & BOAT SCHOOLS (TWO PARTNER NON-PROFITS),  
 - IT IS ALSO ENVISIONED TO ALLOW FOR NGO/PRIVATE COLLABORATIONS, WITH SPACE AVAILABLE FOR SMALL LOCAL STARTUPS (THROUGH A WOOD SHOP MEMBERSHIP PROGRAM)  
 AND A MODEL FOR COLLABORATION WITH OTHER LOCAL ORGANIZATIONS, INCLUDING THE **EAST GRAND MIDDLE SCHOOL, MEMBERS OF THE GRAND LAKE CREATIVE DISTRICT,**  
**THE GRAND COUNTY LIBRARY DISTRICT,** AND ANY OTHER ORGANIZATIONS REQUIRING A WOOD-SHOP SPACE.

**WHAT MAKES THIS WORKSHOP SO UNIQUE?**

- THE WORKSHOP BUILDING IS MADE FROM TWO 20' HIGH-CUBE INTERMODAL SHIPPING CONTAINERS.
- BOTH CONTAINERS OPEN TO CREATE A 800 S.F. WORKSHOP & RETAIL SPACE, WITH A PREFAB TIMBER-FRAME TENT STRUCTURE IN THE CENTER.
  - THE **PORTABLE COMMUNITY WORKSHOP** IS DESIGNED AS A TEMPORARY STRUCTURE THAT CAN BE USED IN ALL SEASONS.
  - THE *INTERMODAL CONTAINER\** & TENT STRUCTURE IS INSULATED AND HEATED FOR YEAR-ROUND USE.
  - THE BASE WORKSHOP CAN BE ASSEMBLED FOR USE OR DISASSEMBLED FOR TRANSPORT IN A VERY SHORT AMOUNT OF TIME.
- THE **PORTABLE COMMUNITY WORKSHOP** IS DESIGNED TO BE PLACED ON A LOANED OR LEASED SITE WITH EXISTING ELECTRICITY AND FACILITIES ALREADY AVAILABLE.
  - THE WORKSHOP IS HEATED WITH AN EPA-APPROVED PELLET STOVE.



SALTworkshop  
 621 Kalamath Street  
 Denver, CO  
 80204  
 720-326-0989

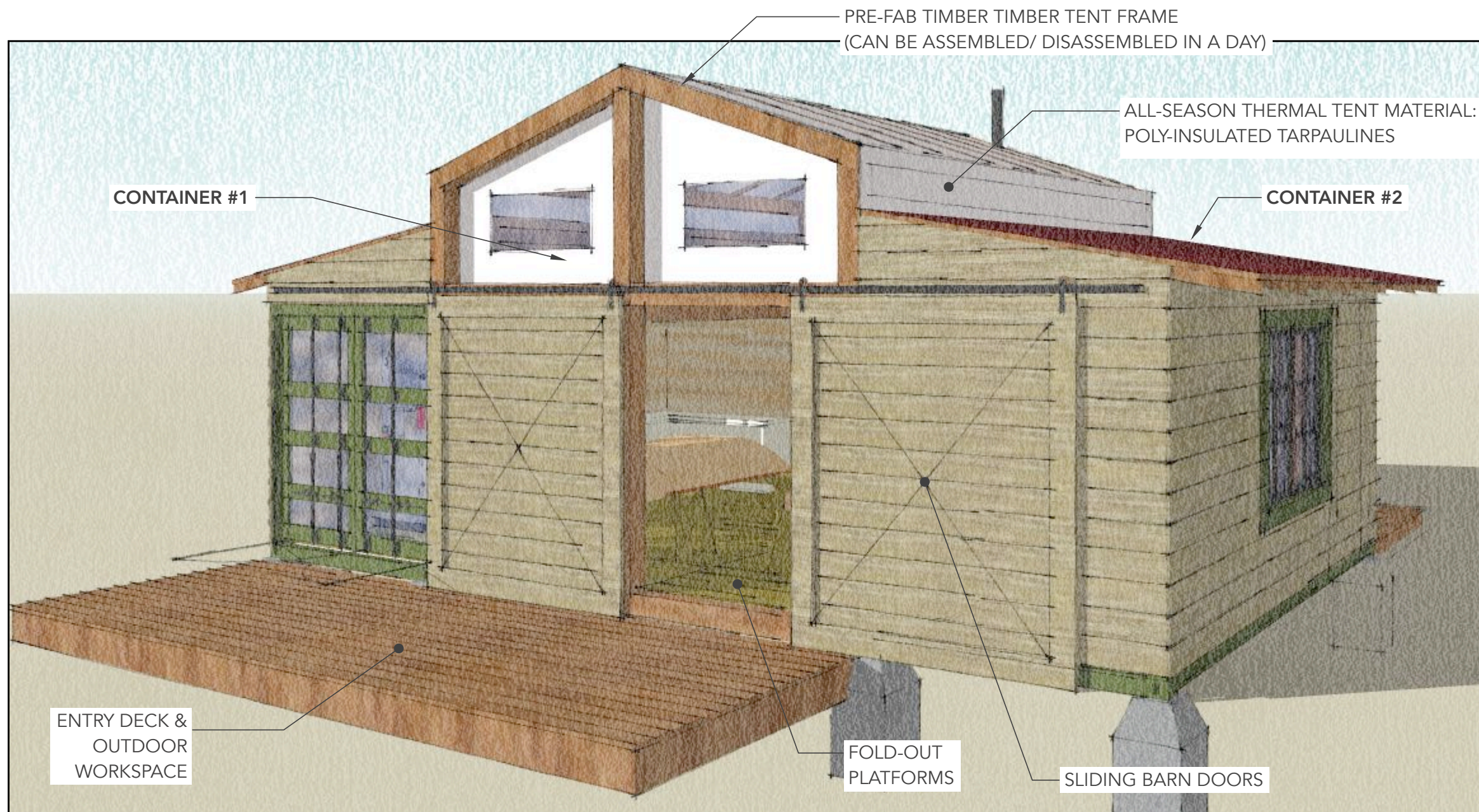
SALTworkshop  
 2036 Ridgeway Ave.  
 Colorado Springs, CO  
 80906  
 719-290-7387

970.670.0806 (o)  
 admin@saltworkshop.com  
 www.saltworkshop.com

ROCKY MOUNTAIN WOODEN BOAT SCHOOL  
 &  
 ROCKY MOUNTAIN FOLK SCHOOL  
**MOBILE  
 COMMUNITY WORKSHOP**

RENDERING

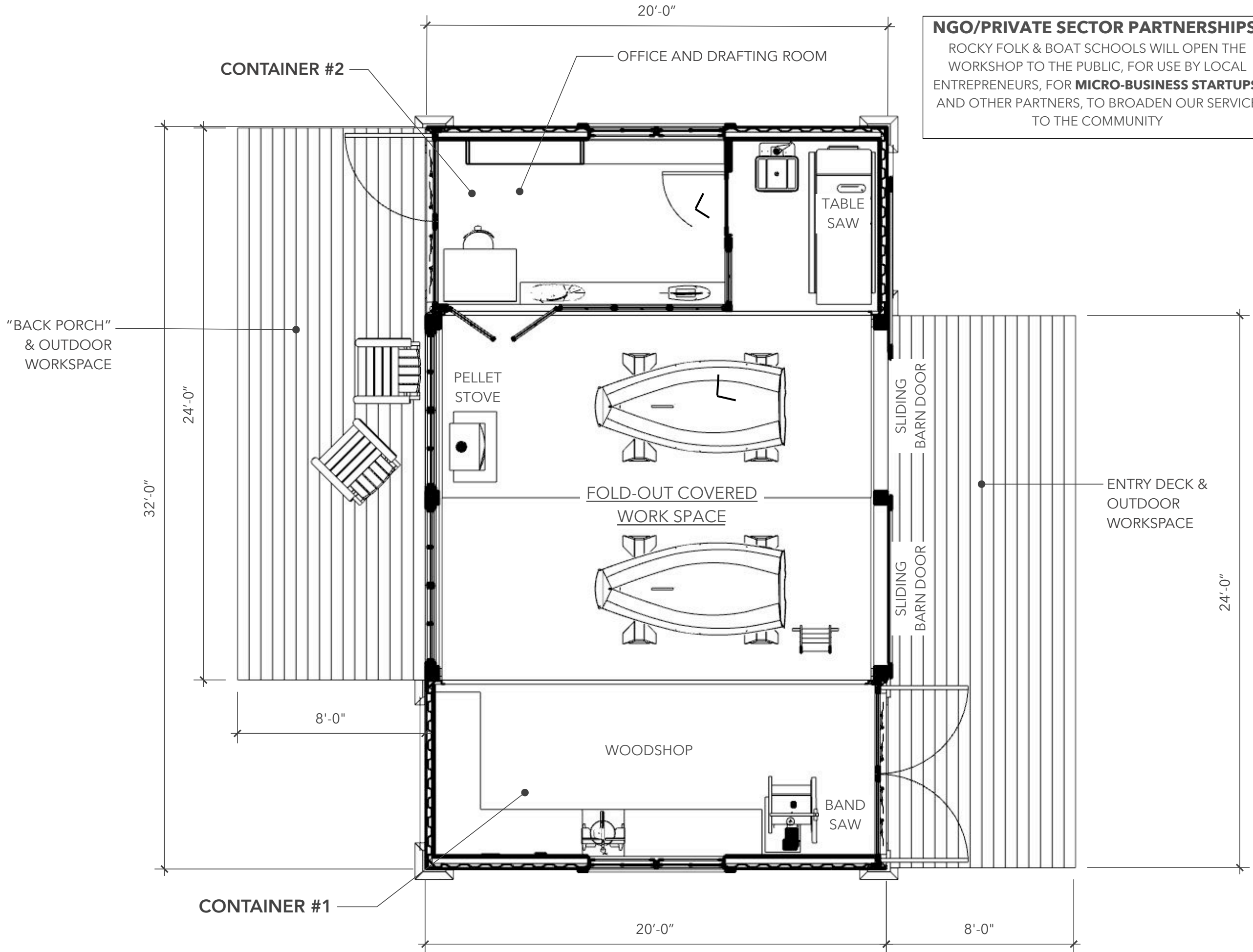
**A.01**



*\*INTERMODAL SHIPPING CONTAINERS CAN BE PURCHASED USED AFTER DECOMMISSIONING, AND ARE DESIGNED FOR EXTREME STRUCTURAL AND WEATHER CONDITIONS*

**A.01 RENDERING: EXTERIOR VIEW**  
 1 scale: not to scale





**NGO/PRIVATE SECTOR PARTNERSHIPS:**  
 ROCKY FOLK & BOAT SCHOOLS WILL OPEN THE WORKSHOP TO THE PUBLIC, FOR USE BY LOCAL ENTREPRENEURS, FOR **MICRO-BUSINESS STARTUPS**, AND OTHER PARTNERS, TO BROADEN OUR SERVICE TO THE COMMUNITY



**SALTworkshop**  
 621 Kalamath Street  
 Denver, CO  
 80204  
 720-326-0989

**SALTworkshop**  
 2036 Ridgeway Ave.  
 Colorado Springs, CO  
 80906  
 719-290-7387

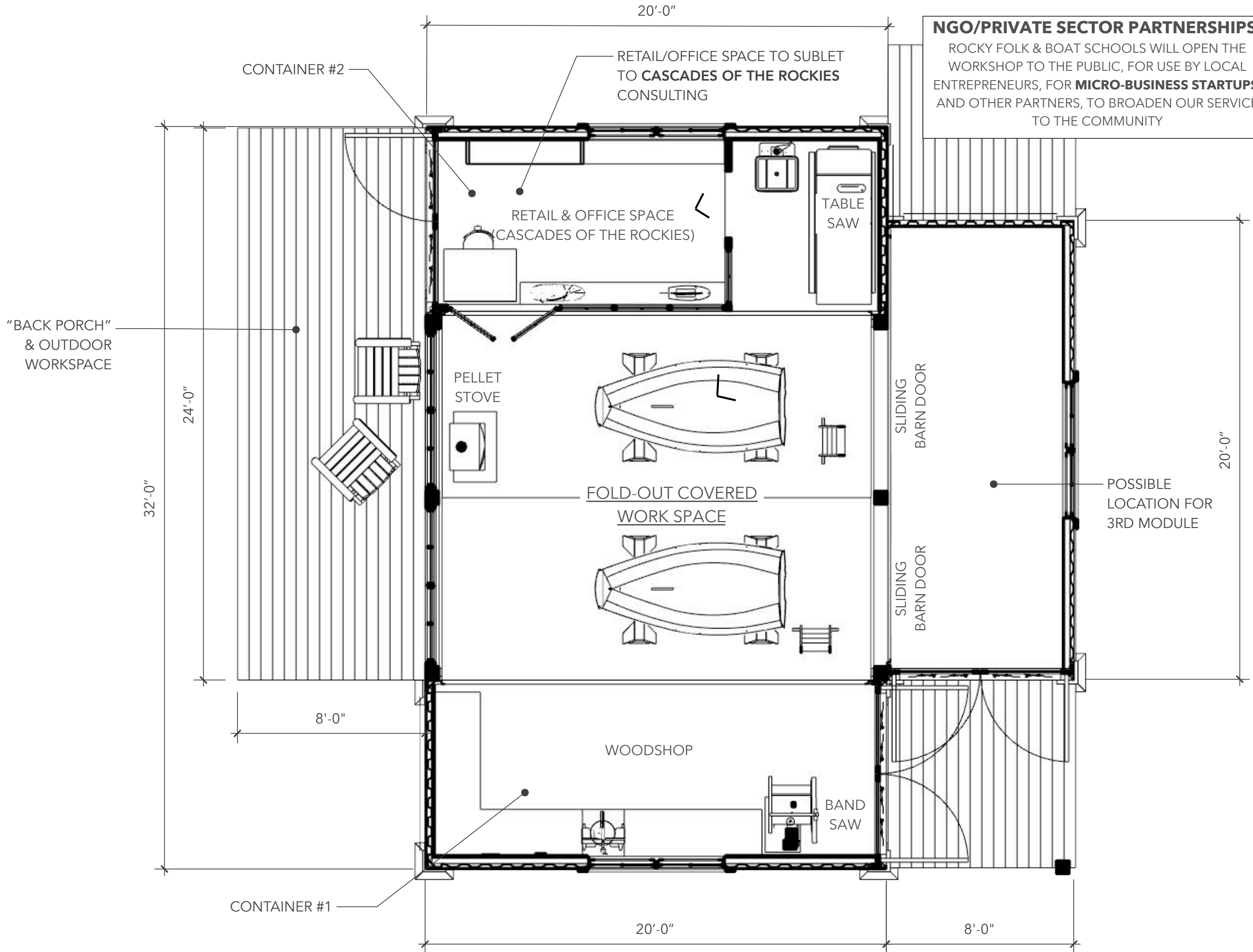
970.670.0806 (o)  
 admin@saltworkshop.com  
 www.saltworkshop.com

ROCKY MOUNTAIN WOODEN BOAT SCHOOL  
 &  
 ROCKY MOUNTAIN FOLK SCHOOL  
**MOBILE  
 COMMUNITY WORKSHOP**

**FLOOR  
 PLAN**  
**2 MODULES**

**A.03**

**A.03 WORKSHOP & RETAIL FLOOR PLAN**  
 1 Scale: 1/4" = 1'-0"



**NGO/PRIVATE SECTOR PARTNERSHIPS:**  
 ROCKY FOLK & BOAT SCHOOLS WILL OPEN THE WORKSHOP TO THE PUBLIC, FOR USE BY LOCAL ENTREPRENEURS, FOR **MICRO-BUSINESS STARTUPS**, AND OTHER PARTNERS, TO BROADEN OUR SERVICE TO THE COMMUNITY



**SALTworkshop**  
 621 Kalamath Street  
 Denver, CO  
 80204  
 720-326-0989

**SALTworkshop**  
 2036 Ridgeway Ave.  
 Colorado Springs, CO  
 80906  
 719-290-7387

970.670.0806 (o)  
 admin@saltworkshop.com  
 www.saltworkshop.com

ROCKY MOUNTAIN WOODEN BOAT SCHOOL  
 &  
 ROCKY MOUNTAIN FOLK SCHOOL  
**MOBILE  
 COMMUNITY WORKSHOP**

**FLOOR  
 PLAN**

**3 MODULES**

**A.03**

**A.03 WORKSHOP & RETAIL FLOOR PLAN**  
 1 Scale: 1/4" = 1'-0"



# SALT WORKSHOP

SALTworkshop  
621 Kalamath Street  
Denver, CO  
80204  
720-326-0989

SALTworkshop  
2036 Ridgeway Ave.  
Colorado Springs, CO  
80906  
719-290-7387

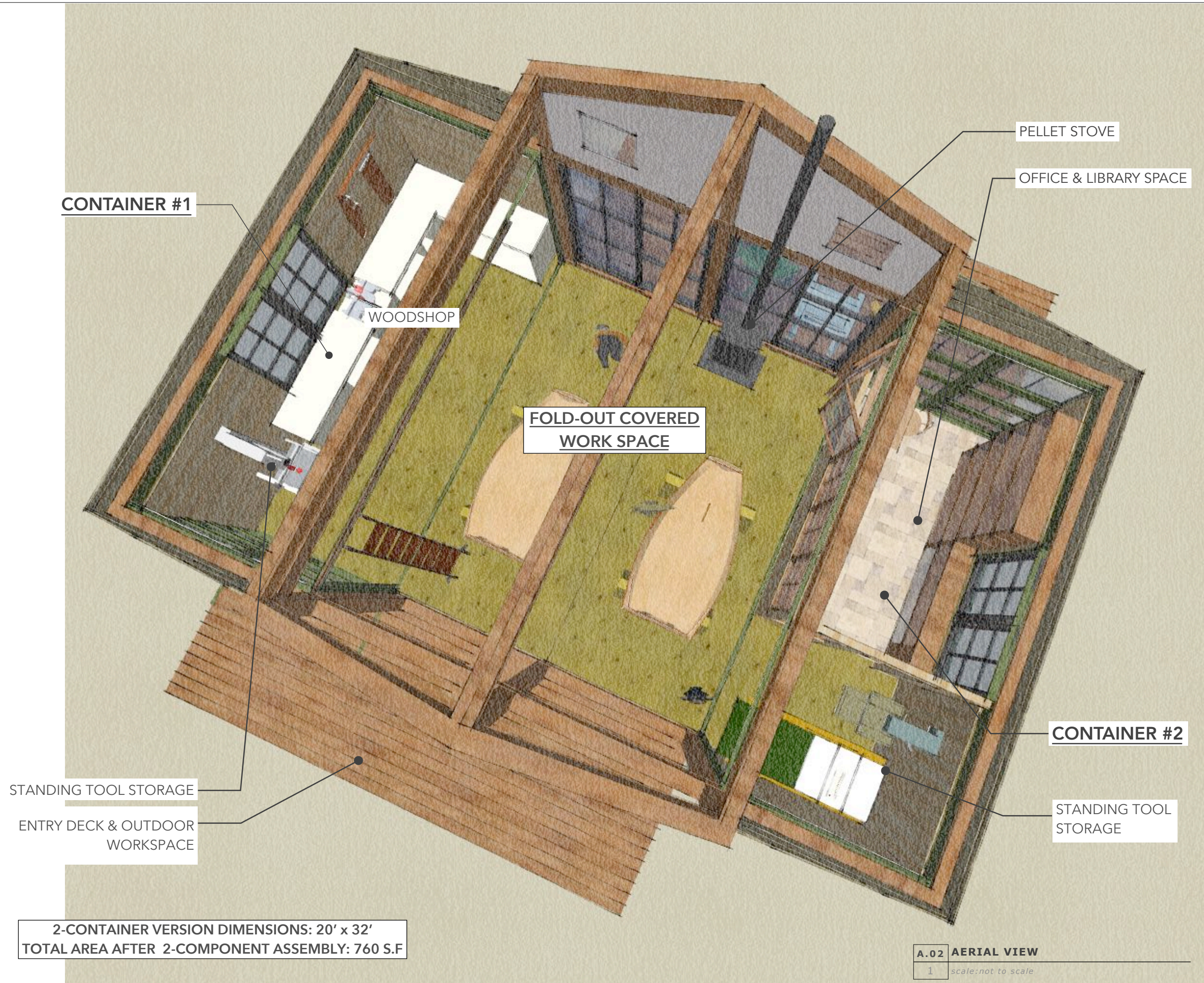
970.670.0806 (o)  
admin@saltworkshop.com  
www.saltworkshop.com

ROCKY MOUNTAIN WOODEN BOAT SCHOOL  
&  
ROCKY MOUNTAIN FOLK SCHOOL  
**MOBILE  
COMMUNITY WORKSHOP**

**AERIAL  
INTERIOR  
VIEW**

**2 MODULES**

**A.02**



STANDING TOOL STORAGE  
ENTRY DECK & OUTDOOR  
WORKSPACE

PELLET STOVE  
OFFICE & LIBRARY SPACE

FOLD-OUT COVERED  
WORK SPACE

CONTAINER #2

STANDING TOOL  
STORAGE

CONTAINER #1

2-CONTAINER VERSION DIMENSIONS: 20' x 32'  
TOTAL AREA AFTER 2-COMPONENT ASSEMBLY: 760 S.F.

A.02 AERIAL VIEW  
1 scale: not to scale



SALTworkshop  
621 Kalamath Street  
Denver, CO  
80204  
720-326-0989

SALTworkshop  
2036 Ridgeway Ave.  
Colorado Springs, CO  
80906  
719-290-7387

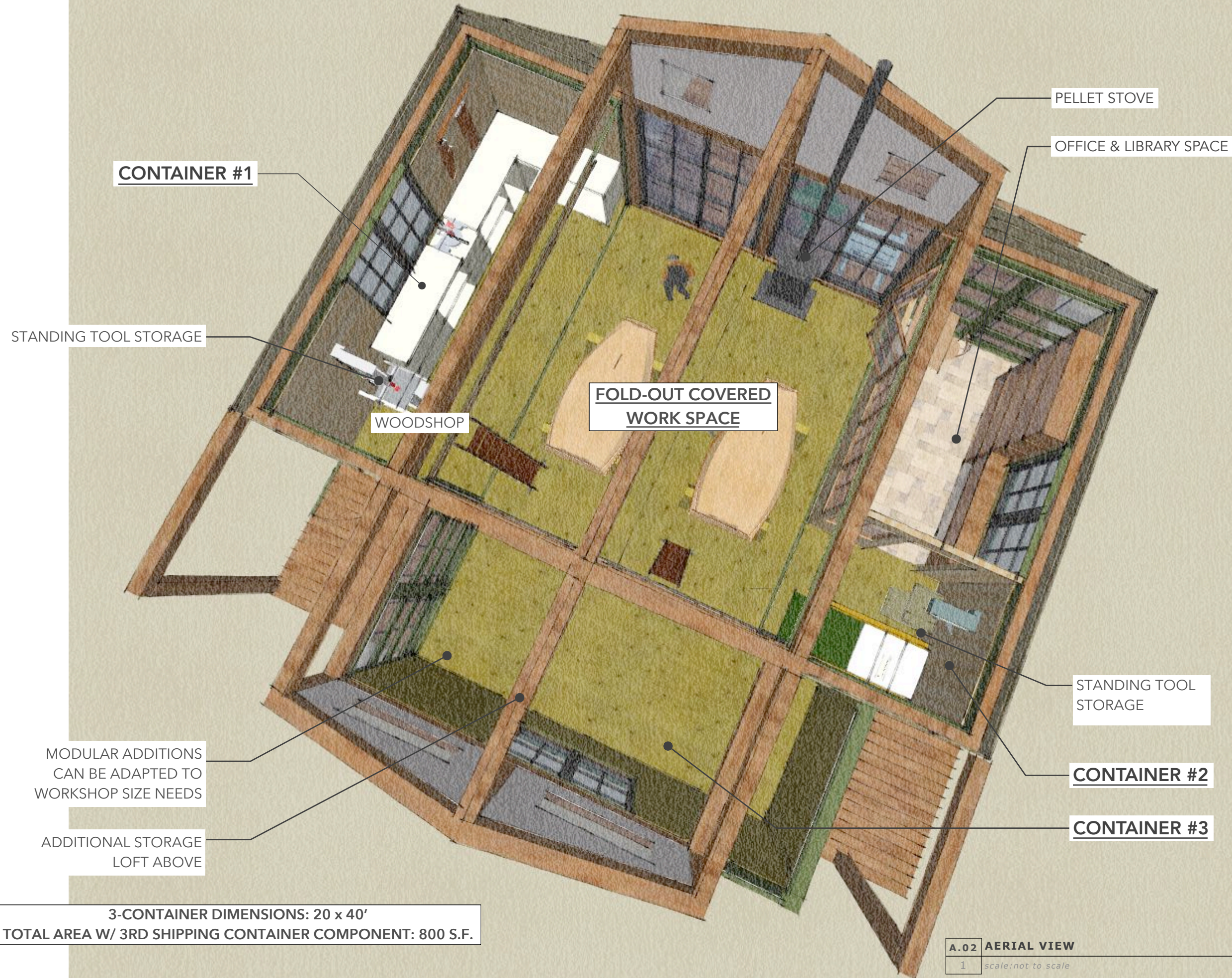
970.670.0806 (o)  
admin@saltworkshop.com  
www.saltworkshop.com

ROCKY MOUNTAIN WOODEN BOAT SCHOOL  
&  
ROCKY MOUNTAIN FOLK SCHOOL  
**MOBILE  
COMMUNITY WORKSHOP**

**AERIAL  
INTERIOR  
VIEW**

**3 MODULES**

**A.02**



**CONTAINER #1**

**PELLET STOVE**

**OFFICE & LIBRARY SPACE**

**STANDING TOOL STORAGE**

**WOODSHOP**

**FOLD-OUT COVERED  
WORK SPACE**

**STANDING TOOL  
STORAGE**

**CONTAINER #2**

**CONTAINER #3**

MODULAR ADDITIONS  
CAN BE ADAPTED TO  
WORKSHOP SIZE NEEDS

ADDITIONAL STORAGE  
LOFT ABOVE

**3-CONTAINER DIMENSIONS: 20 x 40'**  
**TOTAL AREA W/ 3RD SHIPPING CONTAINER COMPONENT: 800 S.F.**



**THE ROCKY MOUNTAIN FOLK SCHOOL & WOODEN BOAT SCHOOL**

THE WORKSHOP IS A **CLASSROOM** SPACE FOR TWO COLLABORATING 501(C)3 NONPROFITS, WHOSE MISSIONS ARE STRONGLY ALIGNED, CONTINUE AND EXPAND SKILLS IN TRADITIONAL ARTS AND CRAFTS AND AFFILIATED TRADES ALONG WITH THE CRAFT OF WOODEN BOAT BUILDING, REPAIR AND RESTORATION.

THIS WORKSHOP WILL BE USED FOR ADULT & YOUTH CLASSES, OPEN FOR COLLABORATION WITH **EAST GRAND MIDDLE SCHOOL, GRAND COUNTY PUBLIC LIBRARIES** & ALLIED TRADES & CRAFT CLASSES. IN ADDITION, IT WILL BE **AVAILABLE TO THE PUBLIC**, THROUGH SUBSCRIPTION MEMBERSHIP, FOR CRAFTSPEOPLE LOOKING TO ADVANCE SMALL BUSINESSES, PROVIDING TOOLS AND INFRASTRUCTURE AS AN INCUBATOR FOR LOCAL SMALL BUSINESSES AND STARTUPS

THE FOLK AND BOAT SCHOOLS HAVE A LONG-TERM PLAN TO BUILD A PERMANENT CLASSROOM AND MUSEUM STRUCTURE TO BE BUILT IN GRAND LAKE. COLORADO. THIS PORTABLE STRUCTURE WILL PROVIDE A LOW-COST TEMPORARY HOME FOR THE SCHOOL, AS FUNDRAISING EFFORTS CONTINUE. THIS STRUCTURE WILL THEN BE REPURPOSED AS AN AUXILIARY STRUCTURE FOR ADJUNCT CLASSES.



**SALTworkshop**  
621 Kalamath Street  
Denver, CO  
80204  
720-326-0989

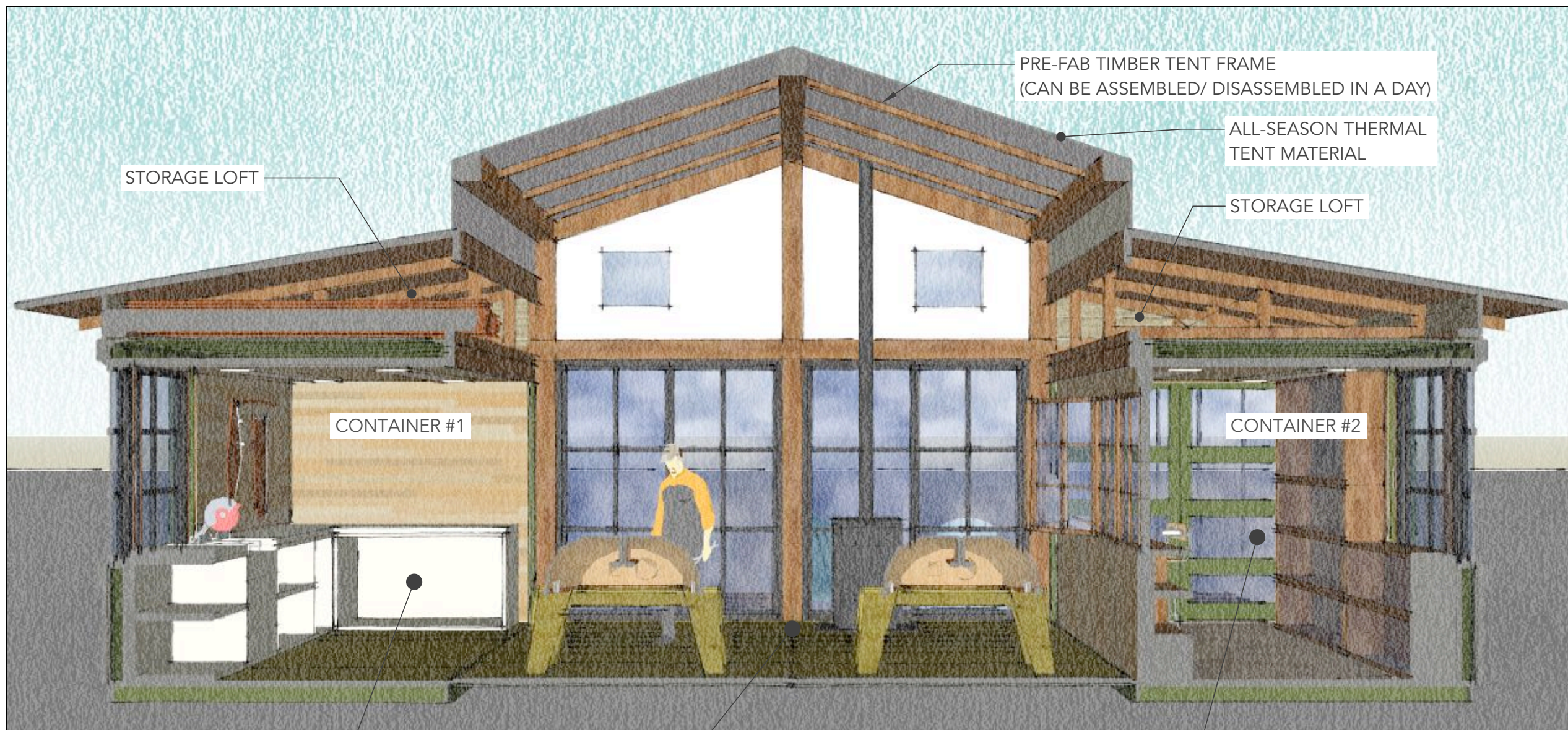
**SALTworkshop**  
2036 Ridgeway Ave.  
Colorado Springs, CO  
80906  
719-290-7387

970.670.0806 (o)  
admin@saltworkshop.com  
www.saltworkshop.com

ROCKY MOUNTAIN WOODEN BOAT SCHOOL  
&  
ROCKY MOUNTAIN FOLK SCHOOL  
**MOBILE  
COMMUNITY WORKSHOP**

**CROSS  
SECTION**

**A.04**



STORAGE LOFT

PRE-FAB TIMBER TENT FRAME  
(CAN BE ASSEMBLED/ DISASSEMBLED IN A DAY)

ALL-SEASON THERMAL  
TENT MATERIAL

STORAGE LOFT

CONTAINER #1

CONTAINER #2

CONTAINER #1:  
WOODSHOP COMPONENT

CONTAINER #2:  
RETAIL-OFFICE COMPONENT

FOLD-OUT PLATFORMS:  
COVERED WORKSHOP COMPONENT

**A.04 WORKSHOP CROSS-SECTION**  
1 scale: not to scale



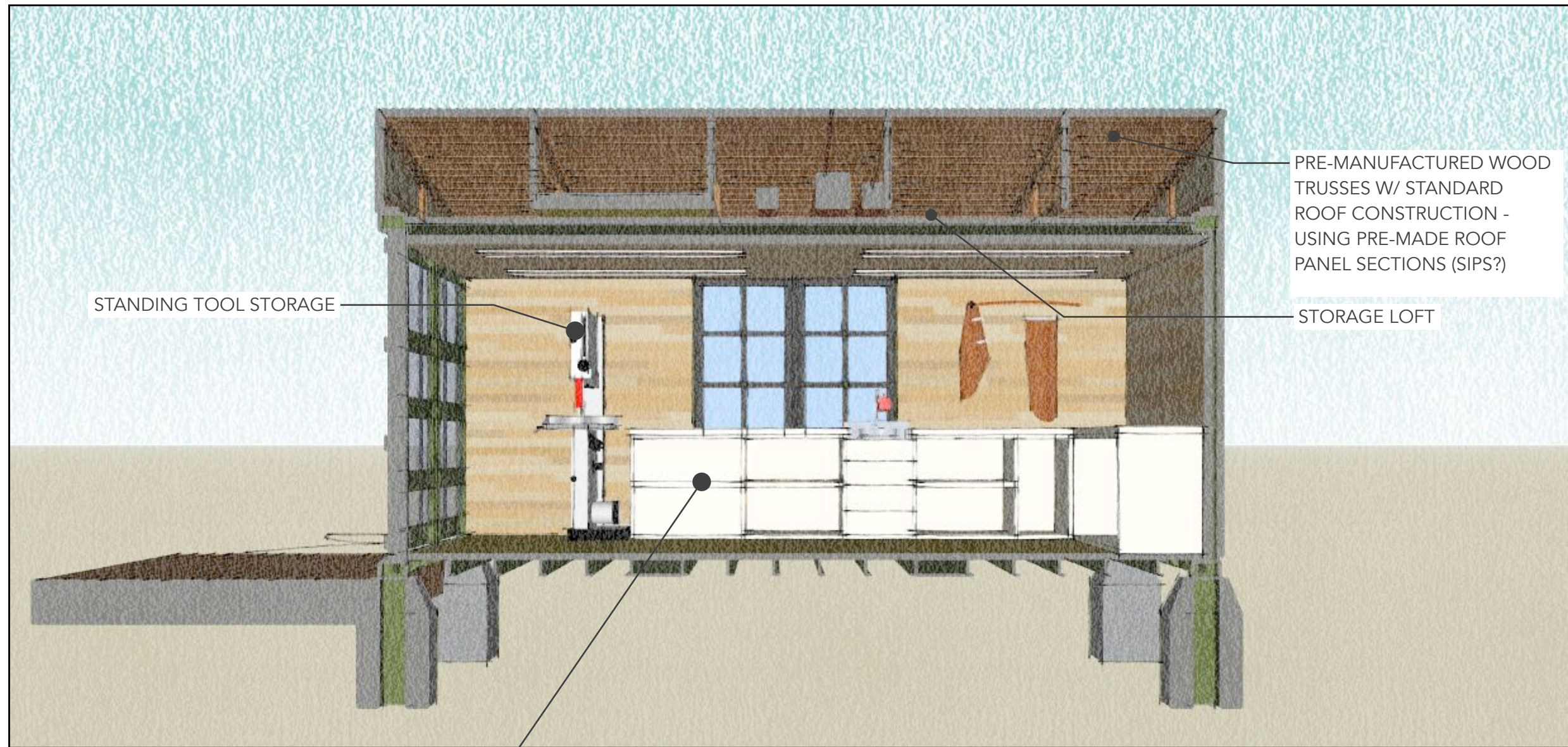
SALTworkshop  
621 Kalamath Street  
Denver, CO  
80204  
720-326-0989

SALTworkshop  
2036 Ridgeway Ave.  
Colorado Springs, CO  
80906  
719-290-7387

970.670.0806 (o)  
admin@saltworkshop.com  
www.saltworkshop.com

ROCKY MOUNTAIN WOODEN BOAT SCHOOL  
&  
ROCKY MOUNTAIN FOLK SCHOOL

**MOBILE  
COMMUNITY WORKSHOP**



STANDING TOOL STORAGE

PRE-MANUFACTURED WOOD TRUSSES W/ STANDARD ROOF CONSTRUCTION - USING PRE-MADE ROOF PANEL SECTIONS (SIPS?)

STORAGE LOFT

WOODSHOP COMPONENT

**A.04** WORKSHOP CROSS-SECTION  
1 scale: not to scale

**A.04**



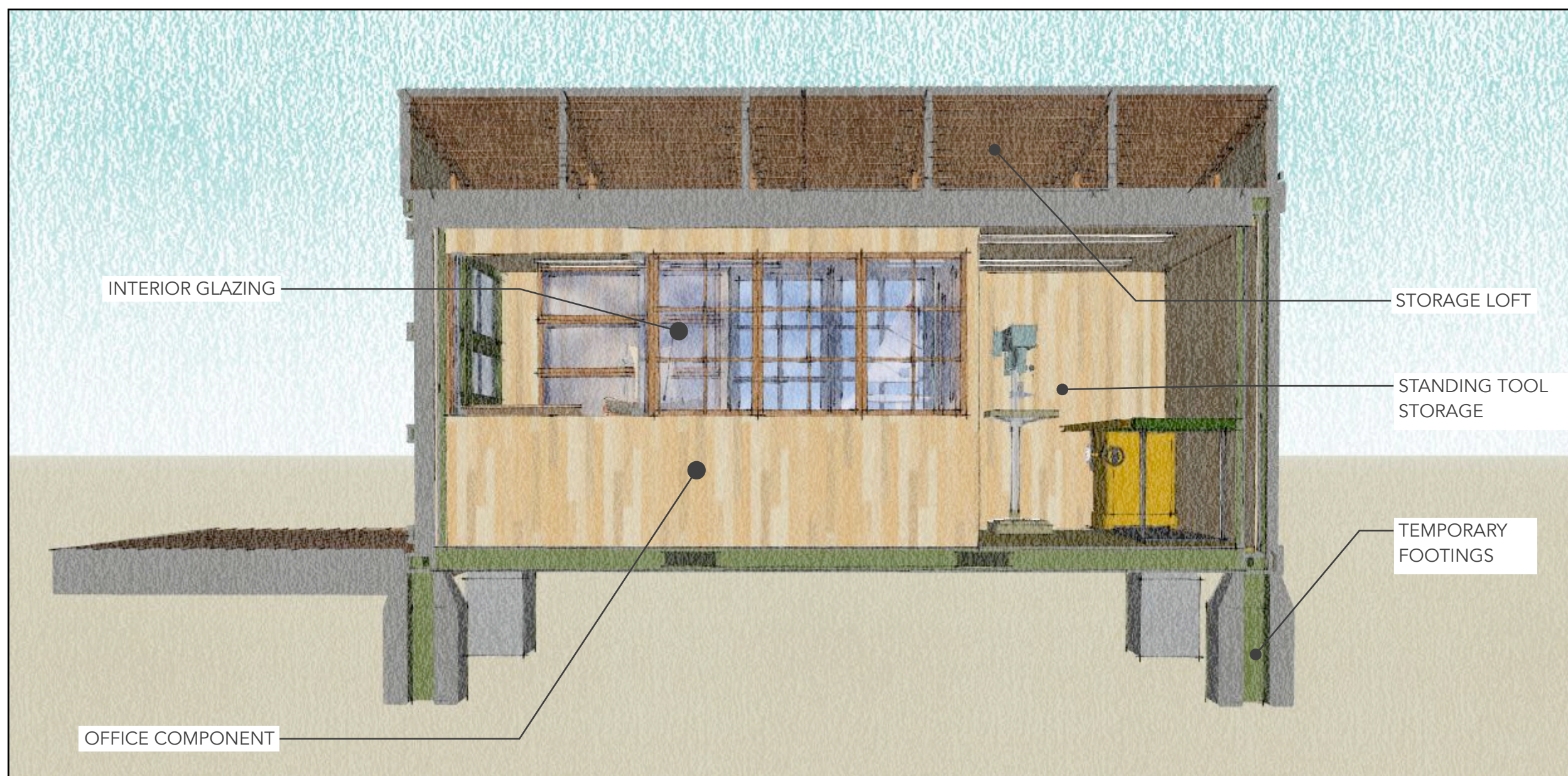
SALTworkshop  
621 Kalamath Street  
Denver, CO  
80204  
720-326-0989

SALTworkshop  
2036 Ridgeway Ave.  
Colorado Springs, CO  
80906  
719-290-7387

970.670.0806 (o)  
admin@saltworkshop.com  
www.saltworkshop.com

ROCKY MOUNTAIN WOODEN BOAT SCHOOL  
&  
ROCKY MOUNTAIN FOLK SCHOOL

MOBILE  
COMMUNITY WORKSHOP

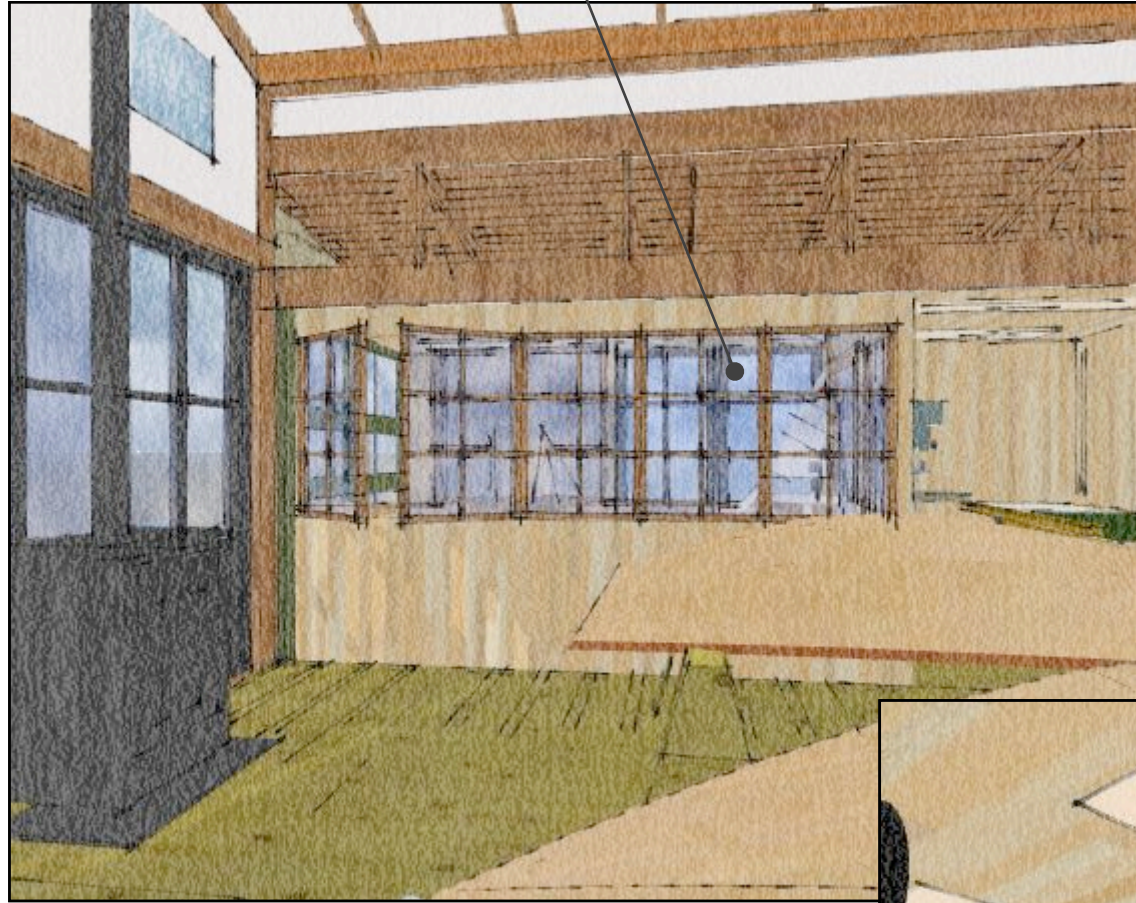


A.04 WORKSHOP CROSS-SECTION  
1 scale: not to scale

# A.04



GLASS WINDOWS TO OFFICE



A.05 INTERIOR RENDERING  
2 scale: not to scale



A.05 INTERIOR RENDERING  
3 scale: not to scale



A.05 INTERIOR RENDERING  
1 scale: not to scale

# SALT WORKSHOP

SALTworkshop  
621 Kalamath Street  
Denver, CO  
80204  
720-326-0989

SALTworkshop  
2036 Ridgeway Ave.  
Colorado Springs, CO  
80906  
719-290-7387

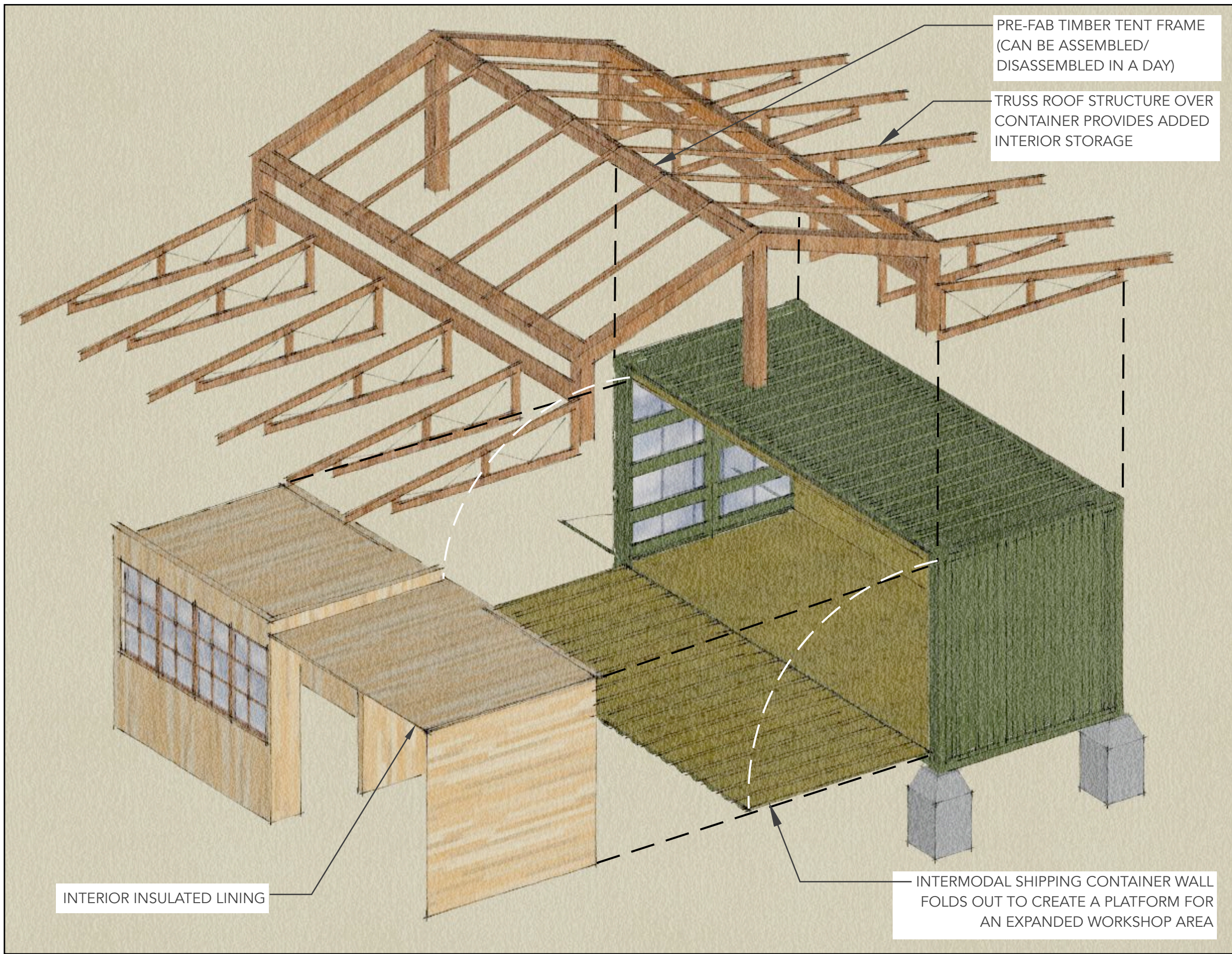
970.670.0806 (o)  
admin@saltworkshop.com  
www.saltworkshop.com

ROCKY MOUNTAIN WOODEN BOAT SCHOOL  
&  
ROCKY MOUNTAIN FOLK SCHOOL

MOBILE  
COMMUNITY WORKSHOP

# A.05





PRE-FAB TIMBER TENT FRAME  
(CAN BE ASSEMBLED/  
DISASSEMBLED IN A DAY)

TRUSS ROOF STRUCTURE OVER  
CONTAINER PROVIDES ADDED  
INTERIOR STORAGE

INTERIOR INSULATED LINING

INTERMODAL SHIPPING CONTAINER WALL  
FOLDS OUT TO CREATE A PLATFORM FOR  
AN EXPANDED WORKSHOP AREA

# SALT WORKSHOP

SALTworkshop  
621 Kalamath Street  
Denver, CO  
80204  
720-326-0989

SALTworkshop  
2036 Ridgeway Ave.  
Colorado Springs, CO  
80906  
719-290-7387

970.670.0806 (o)  
admin@saltworkshop.com  
www.saltworkshop.com

ROCKY MOUNTAIN WOODEN BOAT SCHOOL  
&  
ROCKY MOUNTAIN FOLK SCHOOL  
**MOBILE  
COMMUNITY WORKSHOP**

**A** COMPONENT ISOMETRIC  
06 scale: not to scale

# A.06