
From: Kim White <kwhite@toglco.com>

Sent: Thursday, April 25, 2024 5:20 PM

Subject: RE: Ward Residence GLEHOA APPROVAL

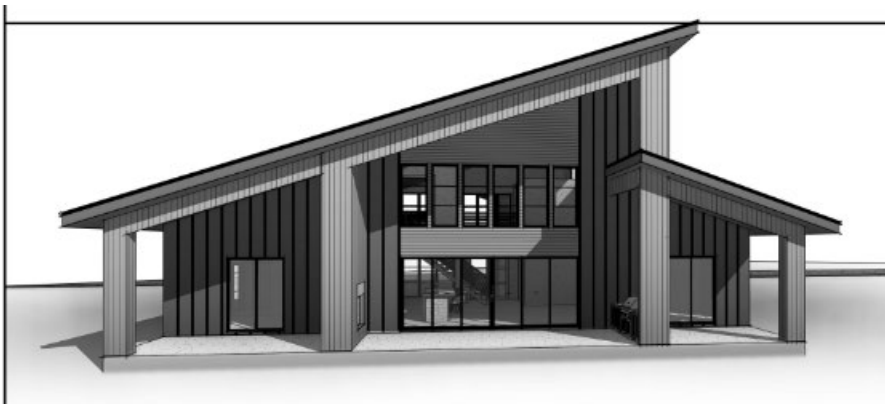
Hi Zach,

This is not a good week unfortunately with the increased workload of spring, and I will be out of the office Mon-Tues for medical reasons. I have time Thursday or Friday (May 2-3) to discuss. I looked at the redlines and it shows that you changed the materials, but not the color. To answer your question, the roofline (and previous material) lends itself to a look that is not in character with the surrounding neighborhood. Many of the surrounding homes have gabled roofs and are log or board and batten, but even the few that aren't, appear to fit in with the neighboring structures (a few quick shots below). I am going with what the code language states, about harmony with the surrounding neighborhood that I cited previously, and I understand that it isn't ideal for your current proposal, so if you would like to apply for a variance with the planning commission and the Board, I will send you the paperwork for that to let them decide.

Thank you for your understanding.

Kind regards,

Kim







Kimberly G. White
Community Development Director
Town of Grand Lake - Planning Dept.
O 970-627-3435