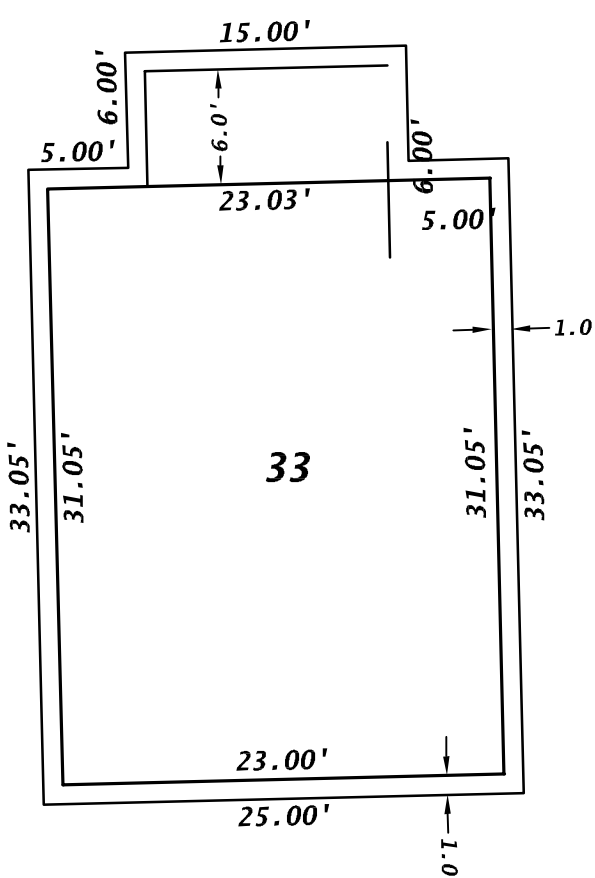
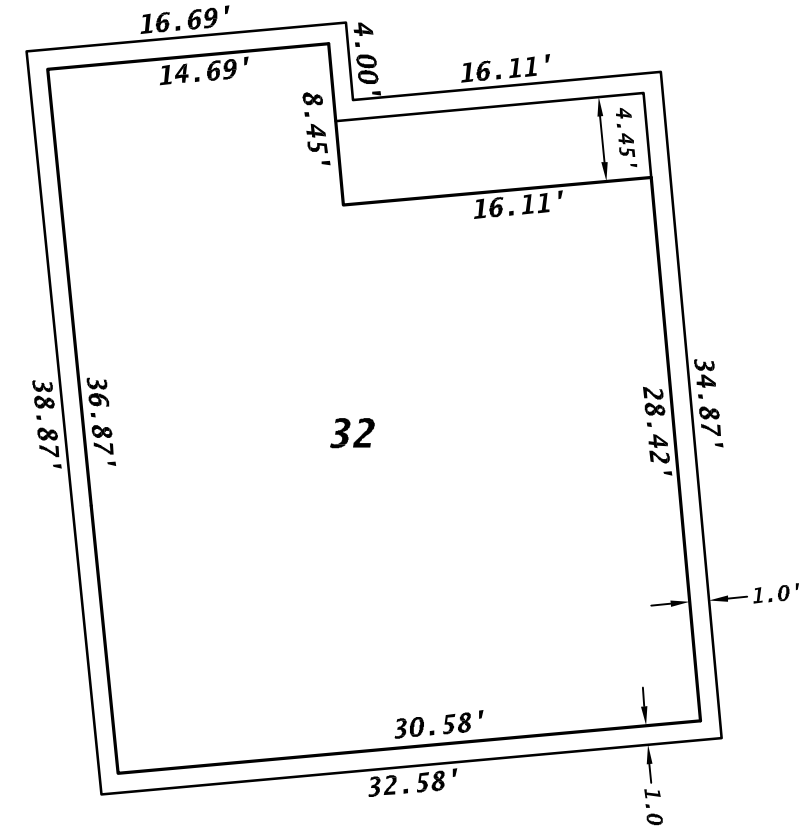
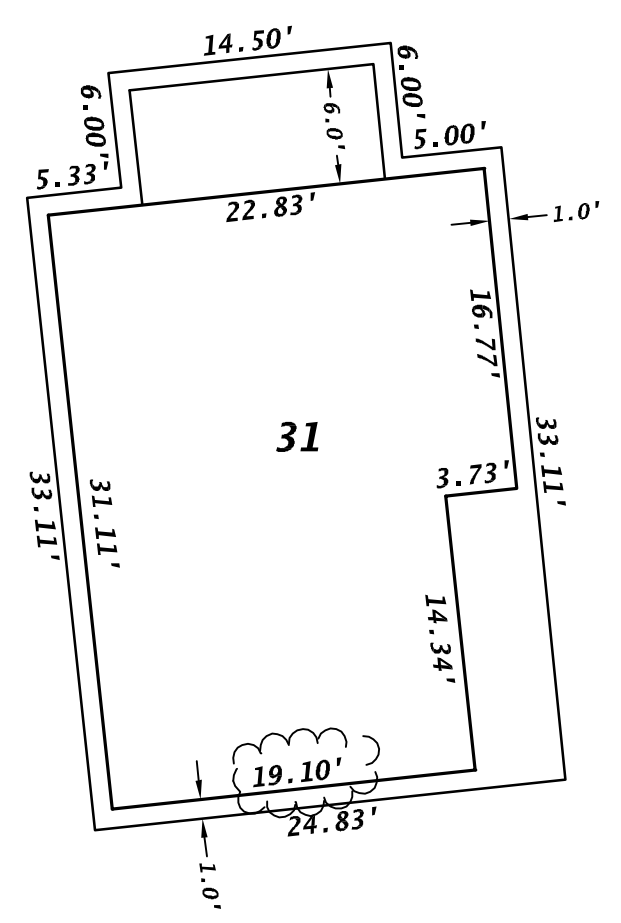
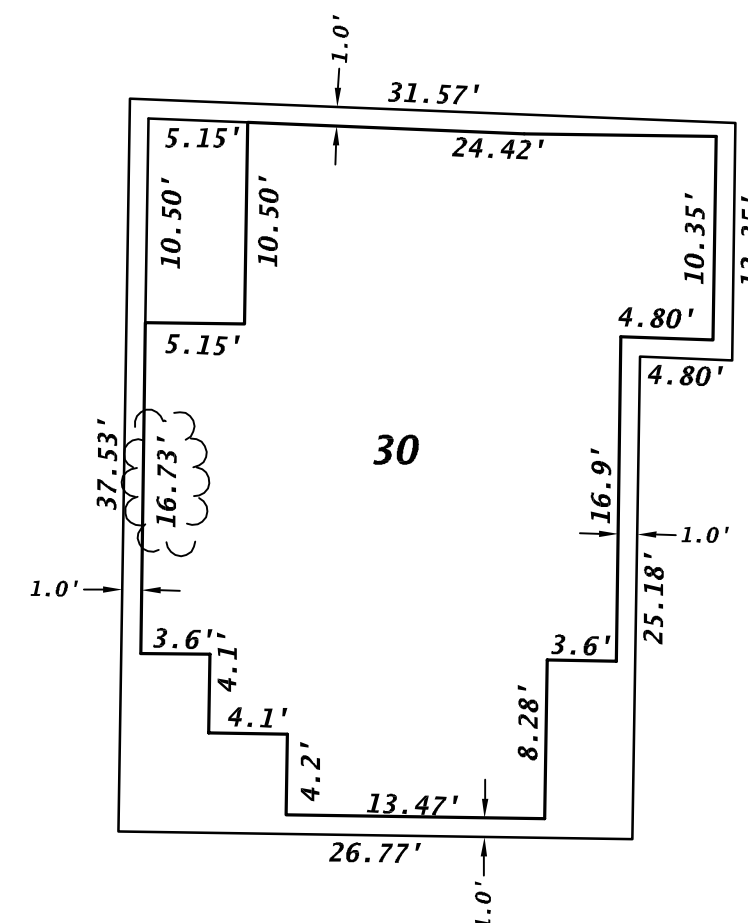
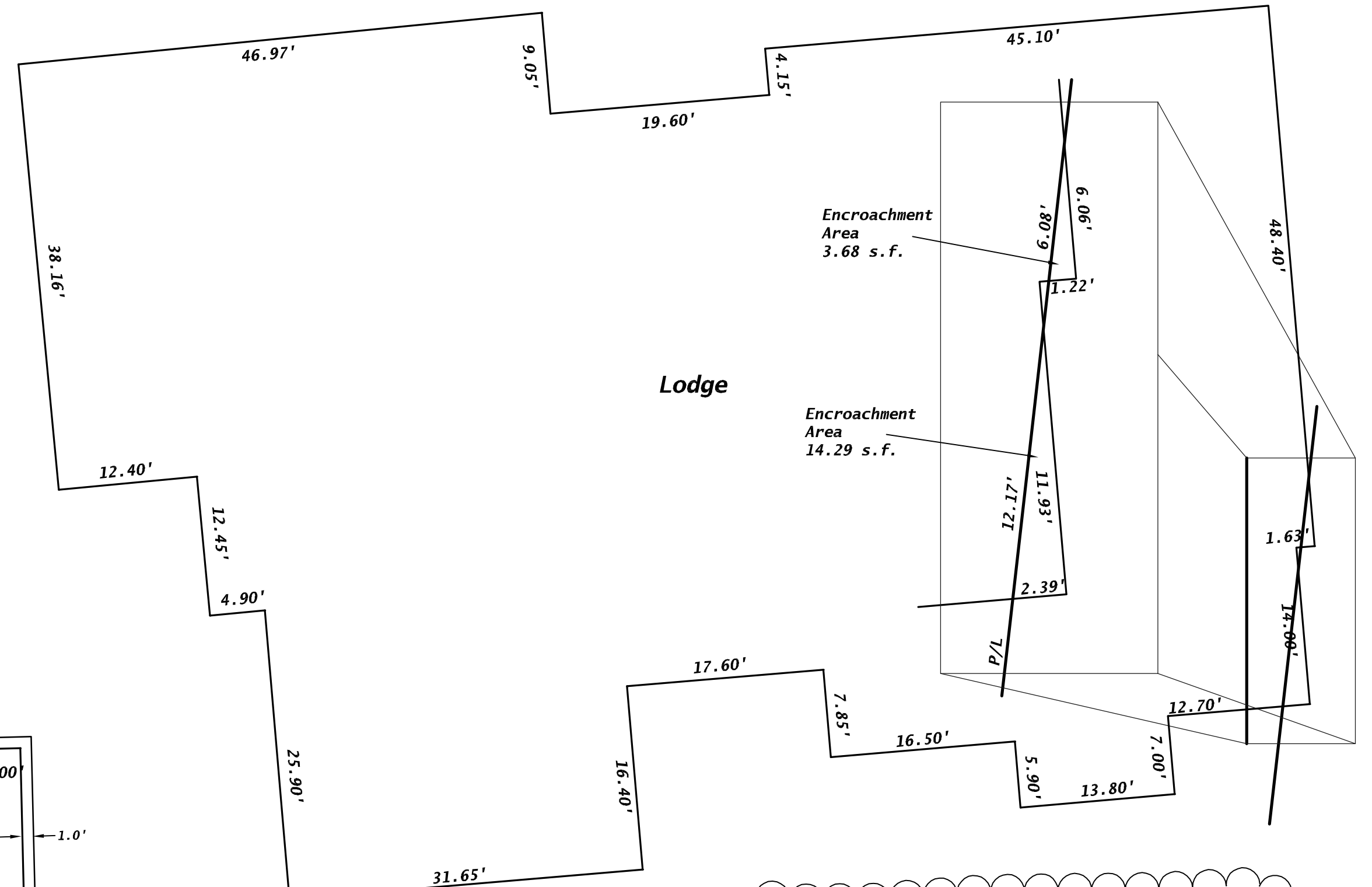
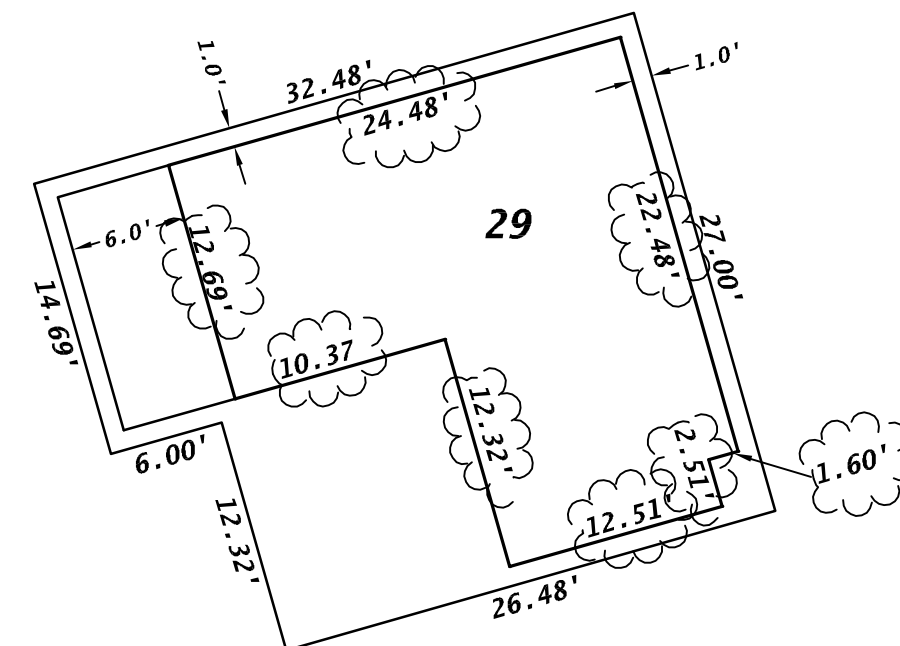
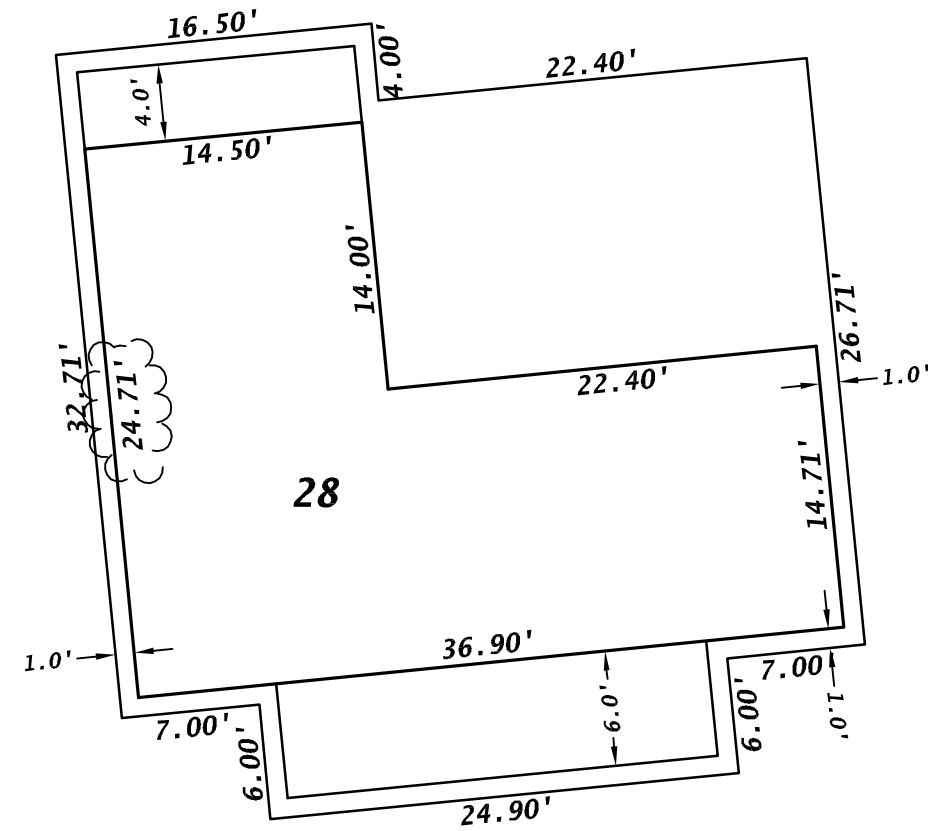
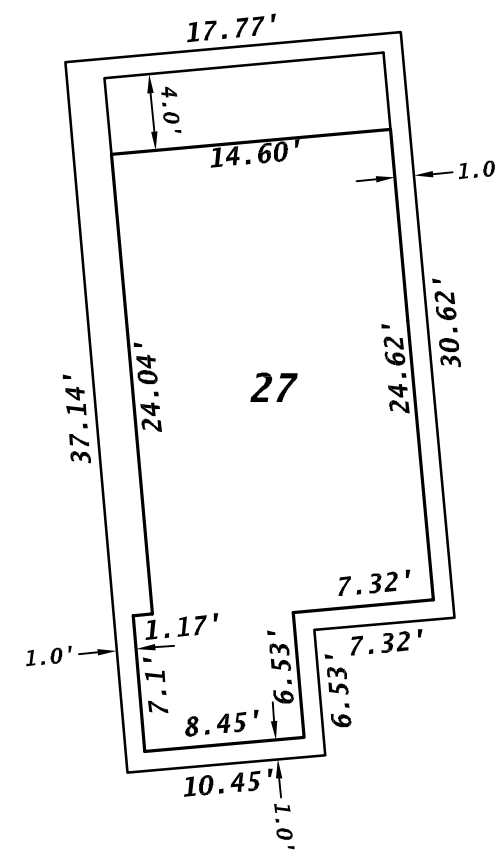
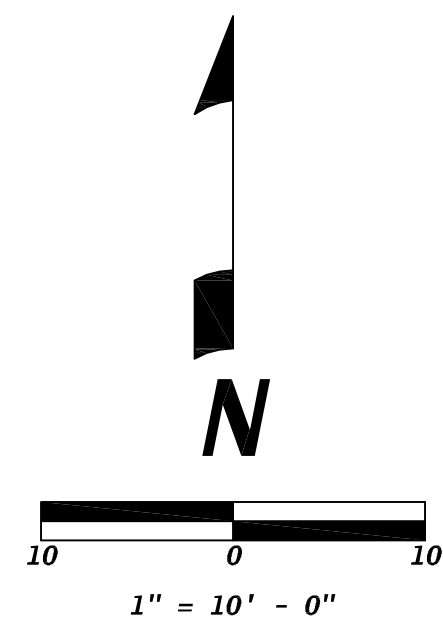




Correction Plat to  
Daven Haven Cottages Final Plat as described in Grand County Rec. #2002-007245; and  
As Built Plat Daven Haven Cottages as described in Grand County Rec. #2005-004886; and  
1st Amendment to the Final Plat of Daven Haven Cottages as described in Grand County Rec. #2008-011705; and  
Daven Haven Cabins Final Plat 2nd Amendment to the Development formally known as Daven Haven Cottages as described in Grand County Rec. #2012-002995

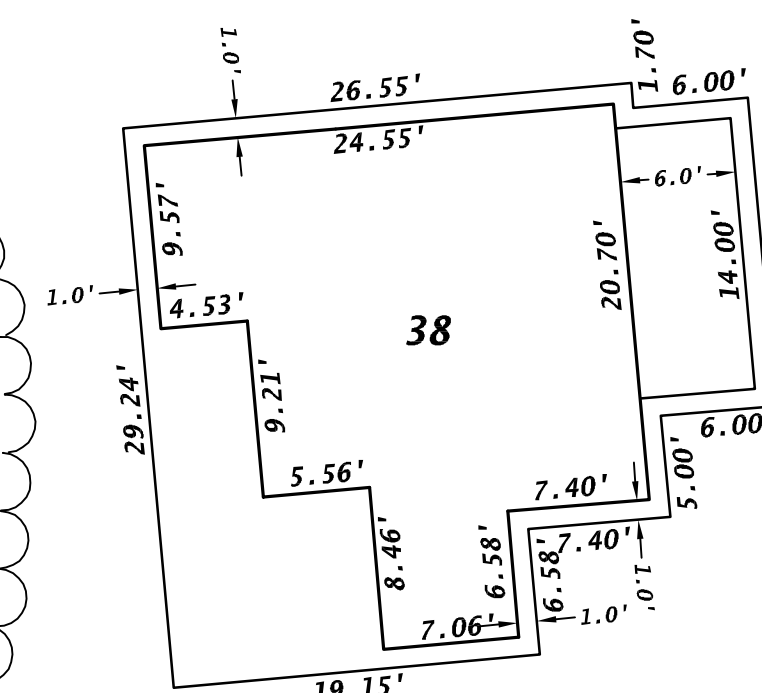
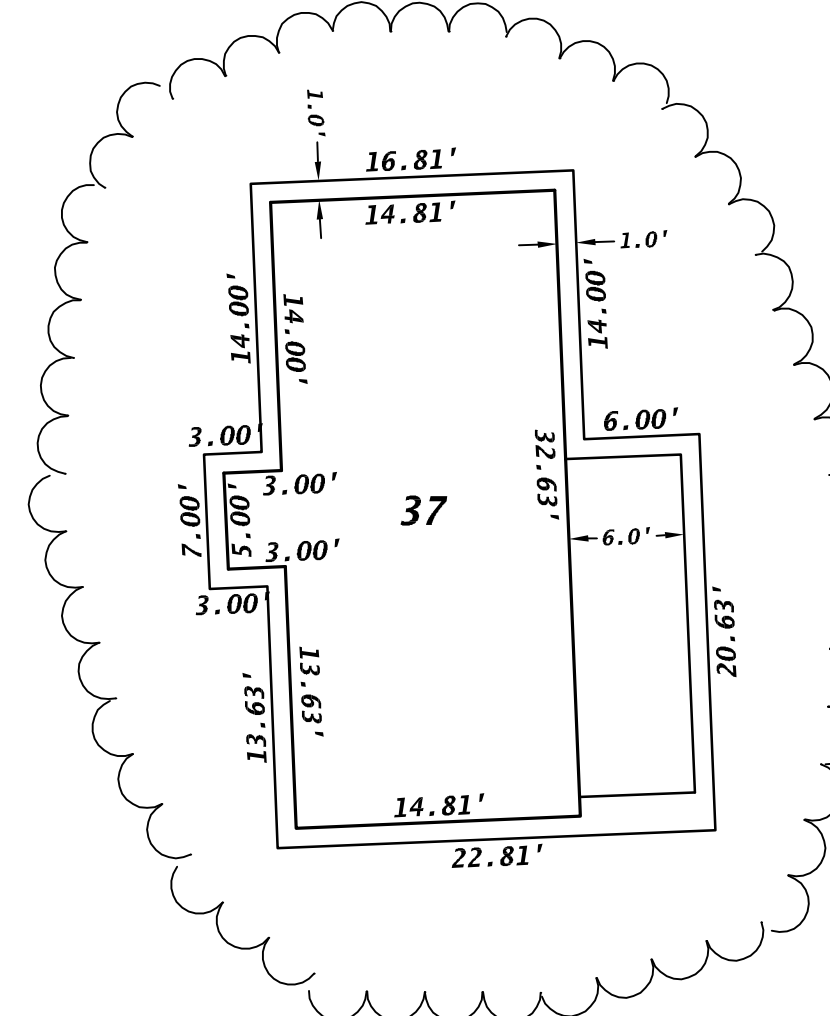
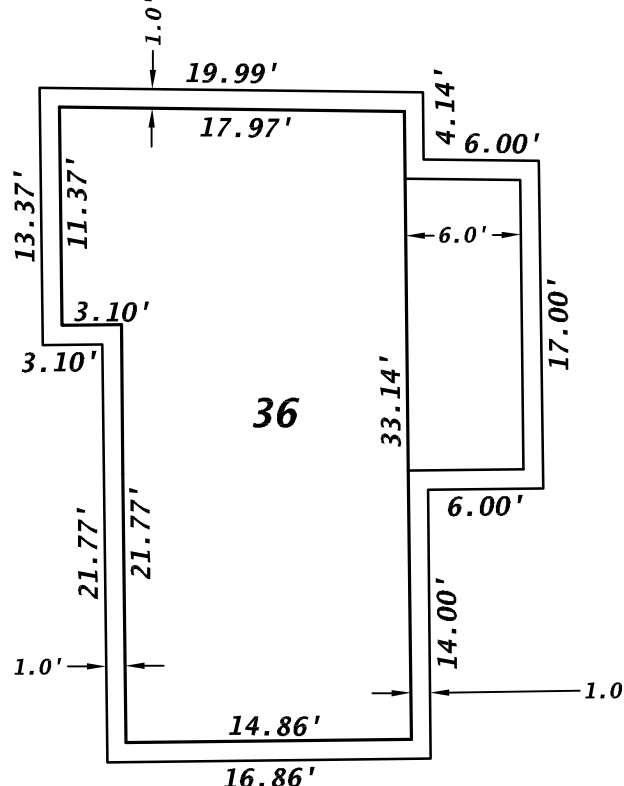
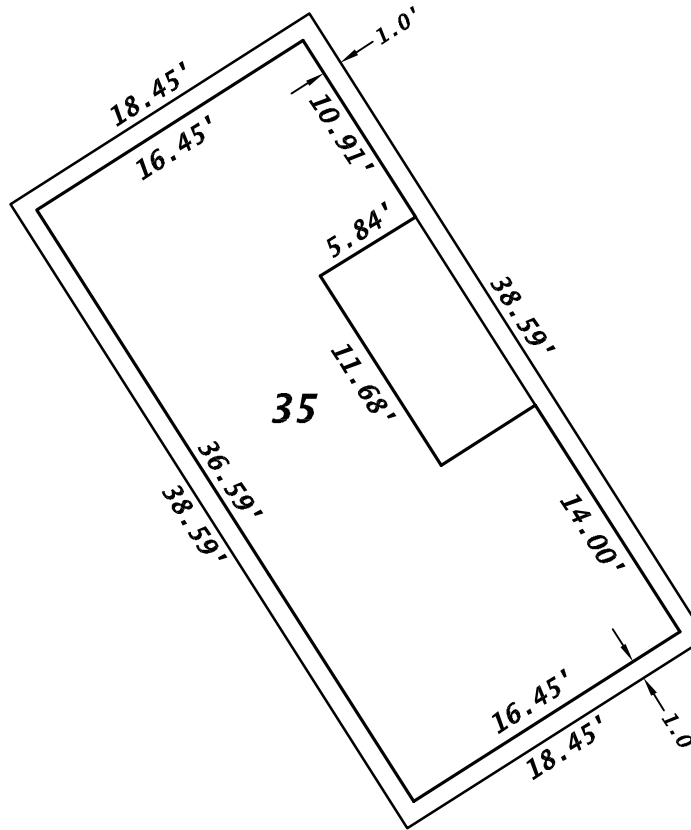
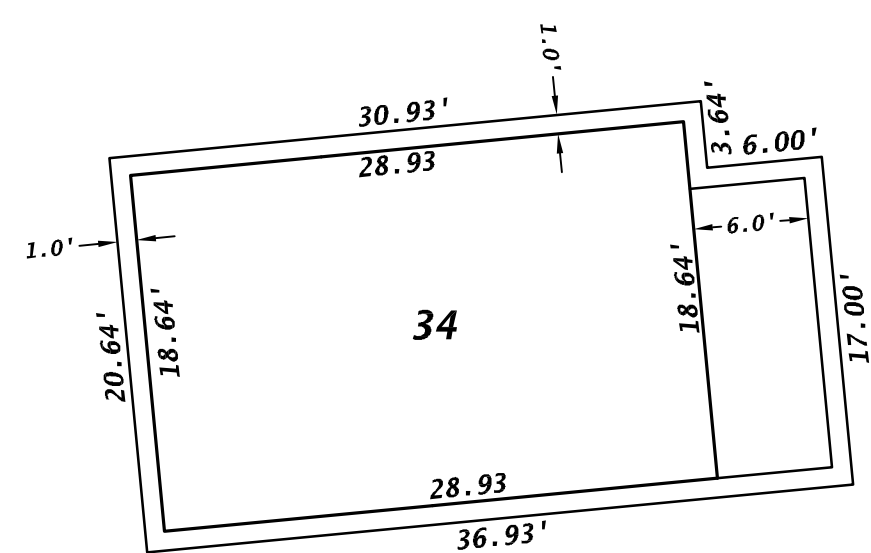
LOCATED IN SECTION 6, T3N, R75W, OF THE 6TH P.M.  
TOWN OF GRAND LAKE, COUNTY OF GRAND, STATE OF COLORADO  
Sheet 2 of 3



BUILDING DATA		Total Footprint sf
Unit 27	612.36	
Unit 28	1254.42	
Unit 29	803.10	
Unit 30	1063.96	
Unit 31	909.12	
Unit 32	1202.80	
Unit 33	916.25	
Unit 34	740.40	
Unit 35	711.99	
Unit 36	735.91	
Unit 37	726.91	
Unit 38	863.93	
Total	10,541.15	

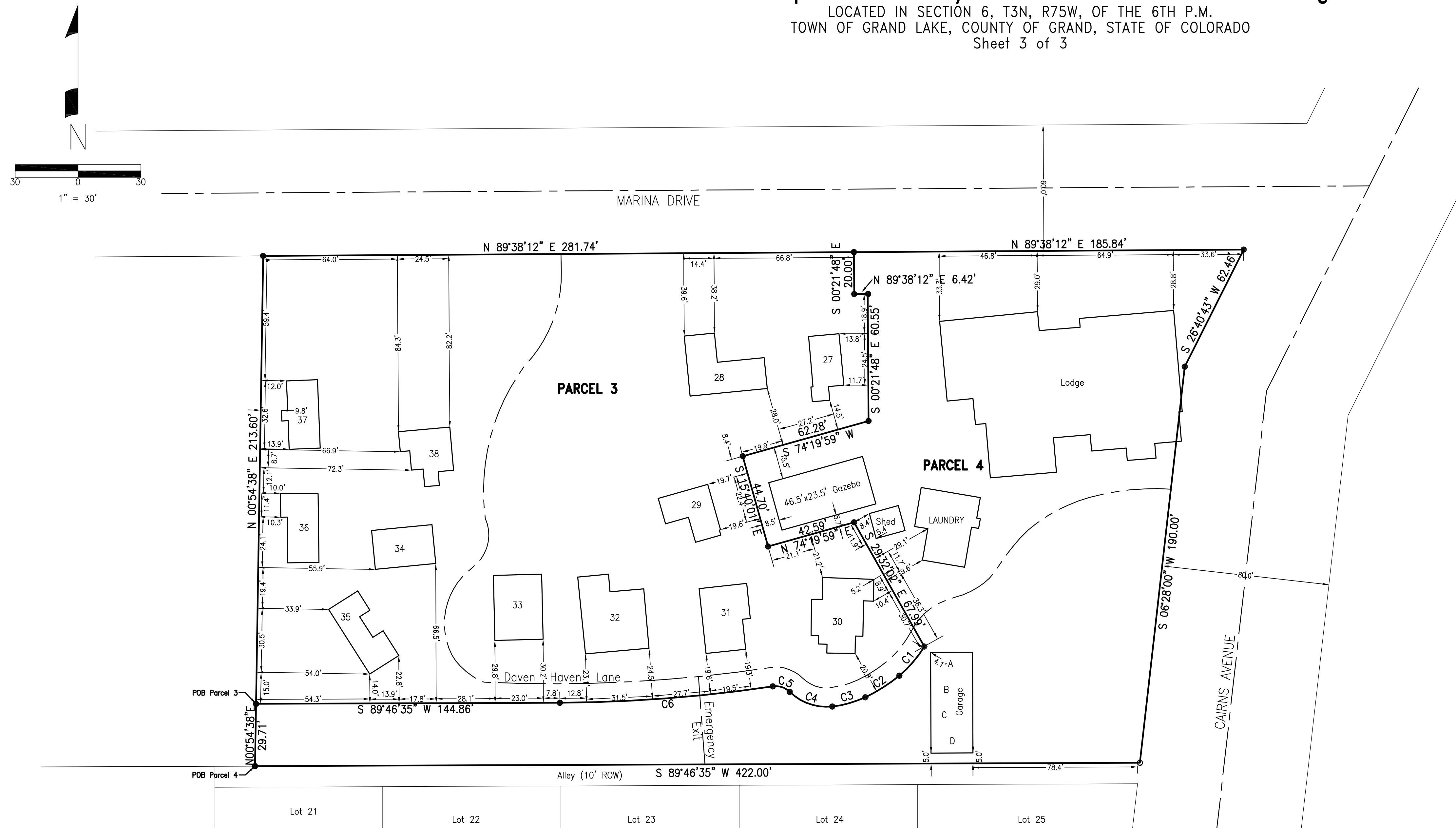
PARCEL 3		TOTAL S.F.
Total		60,121.0
Snow Storage		12,644.0
Foot Prints of Units		10,541.15
Common Area/Open Space		49,579.85
Parking & Road Area		13,827.0
Parking spaces dedicated for Parcel 3: 24 (two per cabin)		

PARCEL 4		TOTAL S.F.
TOTAL		46,268.0
Lodge		6,926.76
Snow storage		9,487.0
Gazebo		1,092.75
Laundry		790.4
Shed		176.1
Parking		3,600.0
Parking spaces dedicated for Lodge Parcel 4: 20		



Correction Plat to  
Daven Haven Cottages Final Plat as described in Grand County Rec. #2002-007245; and  
As Built Plat Daven Haven Cottages as described in Grand County Rec. #2005-004886; and  
1st Amendment to the Final Plat of Daven Haven Cottages as described in Grand County Rec. #2008-011705; and  
Daven Haven Cabins Final Plat 2nd Amendment to the Development formally known as Daven Haven Cottages as described in Grand County Rec. #2012-002995

LOCATED IN SECTION 6, T3N, R75W, OF THE 6TH P.M.  
TOWN OF GRAND LAKE, COUNTY OF GRAND, STATE OF COLORADO  
Sheet 3 of 3



NOTE: All ties to Cabins  
are right angle to Property Lines