



### ATTACHMENT 3

# Leatherwood Grand Lake

Block 5, Grand Lake, CO 80447

*Spirit Lake Condos, LLC*

Preliminary Development Plans

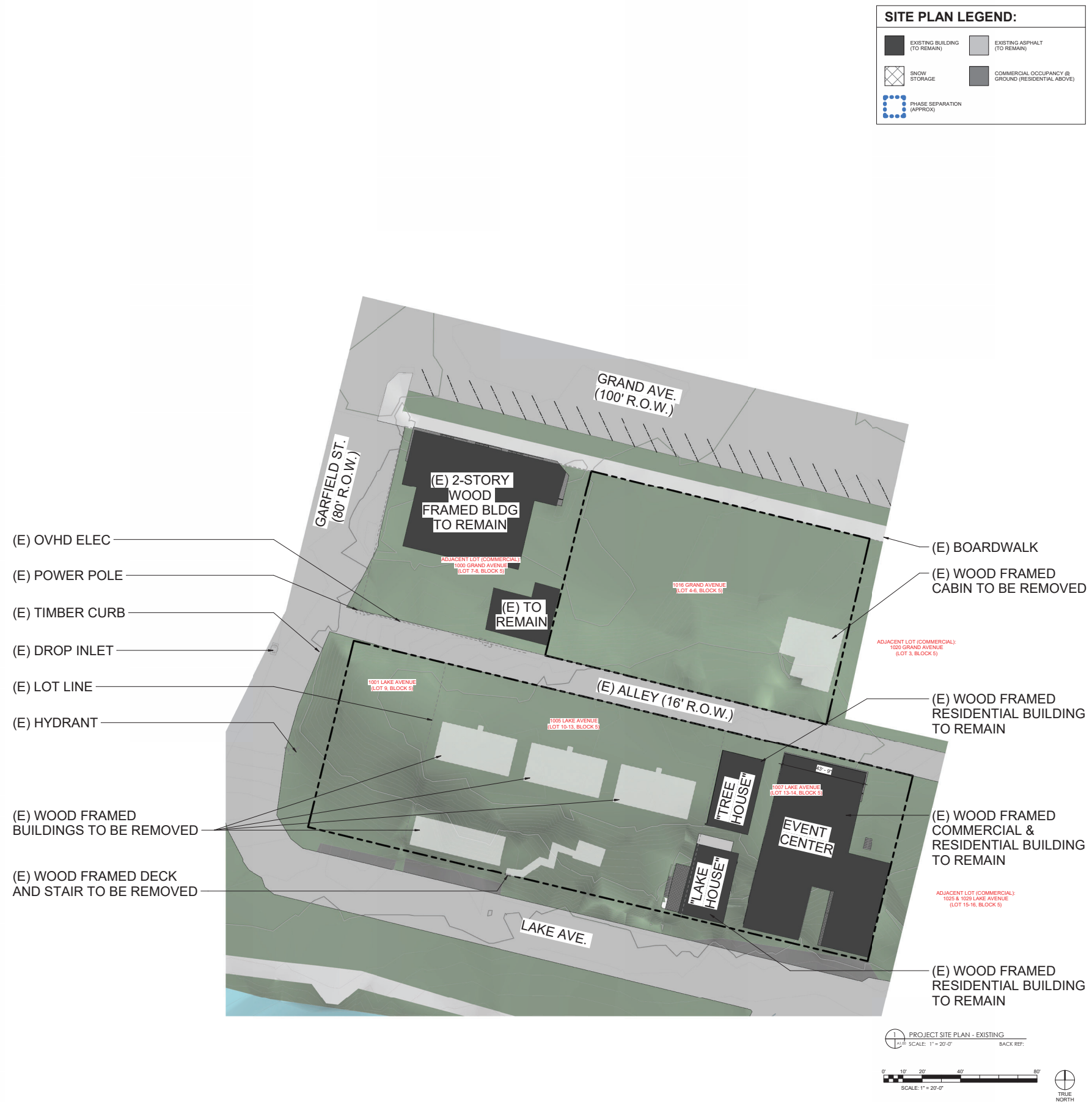
10/22/2024

# LEATHERWOOD GRAND LAKE

Spirit Lake Condos, LLC

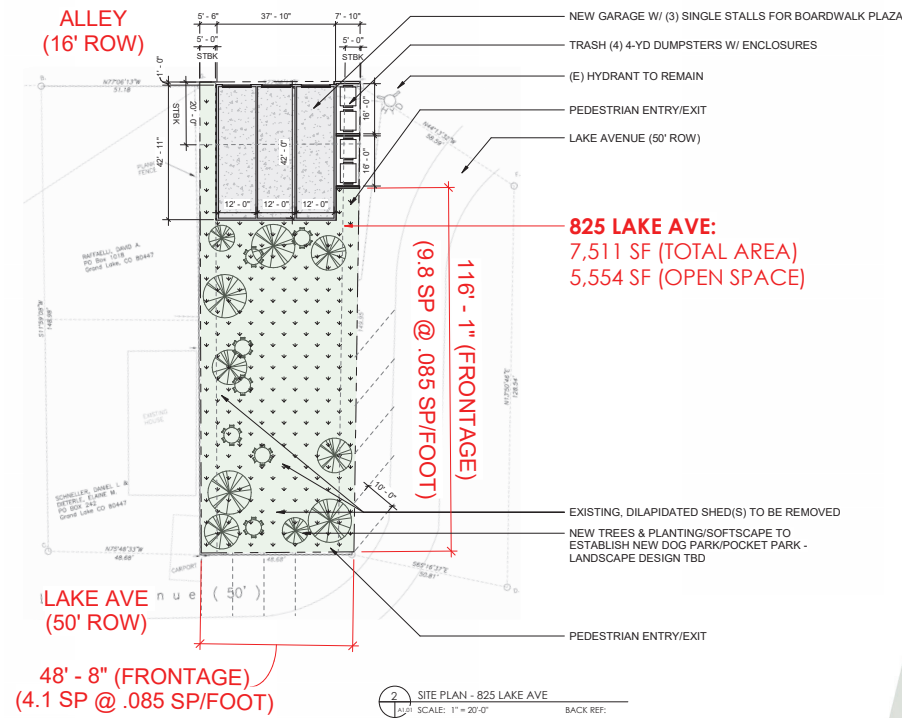
BLOCK 5, GRAND LAKE, CO 80447

PROJECT #2402



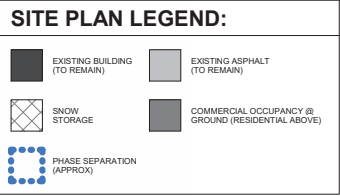
## SITE PLAN: EXISTING





OPEN SPACE CALCS:

TOTAL AREA WITHIN PROPERTY LINE:	1.03 ACRES (44,877 SF)
TOTAL BUILDING FOOTPRINTS:	31,557 SF
ON-SITE OPEN SPACE:	13,320 SF
OFF-SITE OPEN SPACE (@ 825 LAKE AVE):	5,554 SF
TOTAL OPEN SPACE:	18,874 SF
PERCENTAGE (TOTAL OPEN/LOT AREA):	18,874/52,388 = <b>36.0%</b>
PER GL CODE (TABLE 12-2-26-3):	<b>GROUP III</b>
REQUIRED OPEN SPACE:	<b>35% MINIMUM</b>
TOTAL COMMERCIAL/OFFICE:	17,054 SF
TOTAL RESIDENTIAL:	50,117 SF
TOTAL GROSS SF/FLOOR AREA	67,171 SF
PERCENTAGE (COMMERCIAL/TOTAL):	17,054/67,171 = <b>25.4%</b>
REQUIRED COMMERCIAL %:	<b>25-50%</b>



**BUILDING #1:**  
14,305 SF (TOTAL FP)  
**7,950 SF (LEVEL 0 - COMMERCIAL)**  
**1,006 SF (LEVEL 1 - COMMERCIAL)**  
5,193 SF (LEVEL 1 - PARKING)  
6,487 SF (LEVEL 1 - RESIDENTIAL UNITS - 4)  
10,310 SF (LEVEL 2 - RESIDENTIAL UNITS - 4)  
6,928 SF (LEVEL 3 - RESIDENTIAL UNITS - 3)

**TREEHOUSE (0 SF COMMERCIAL):**  
1,146 SF (TOTAL FP)  
573 SF (LEVEL 1 PARKING)  
573 SF (UNIT LEVEL 1 ENTRIES)  
1,496 SF (UPPER LEVEL UNIT)

**LAKEHOUSE (0 SF COMMERCIAL):**  
1,093 SF (TOTAL FP)  
866 SF (LEVEL 0 UNIT)  
744 SF (LEVEL 1 UNIT)  
747 SF (LEVEL 2 UNIT)

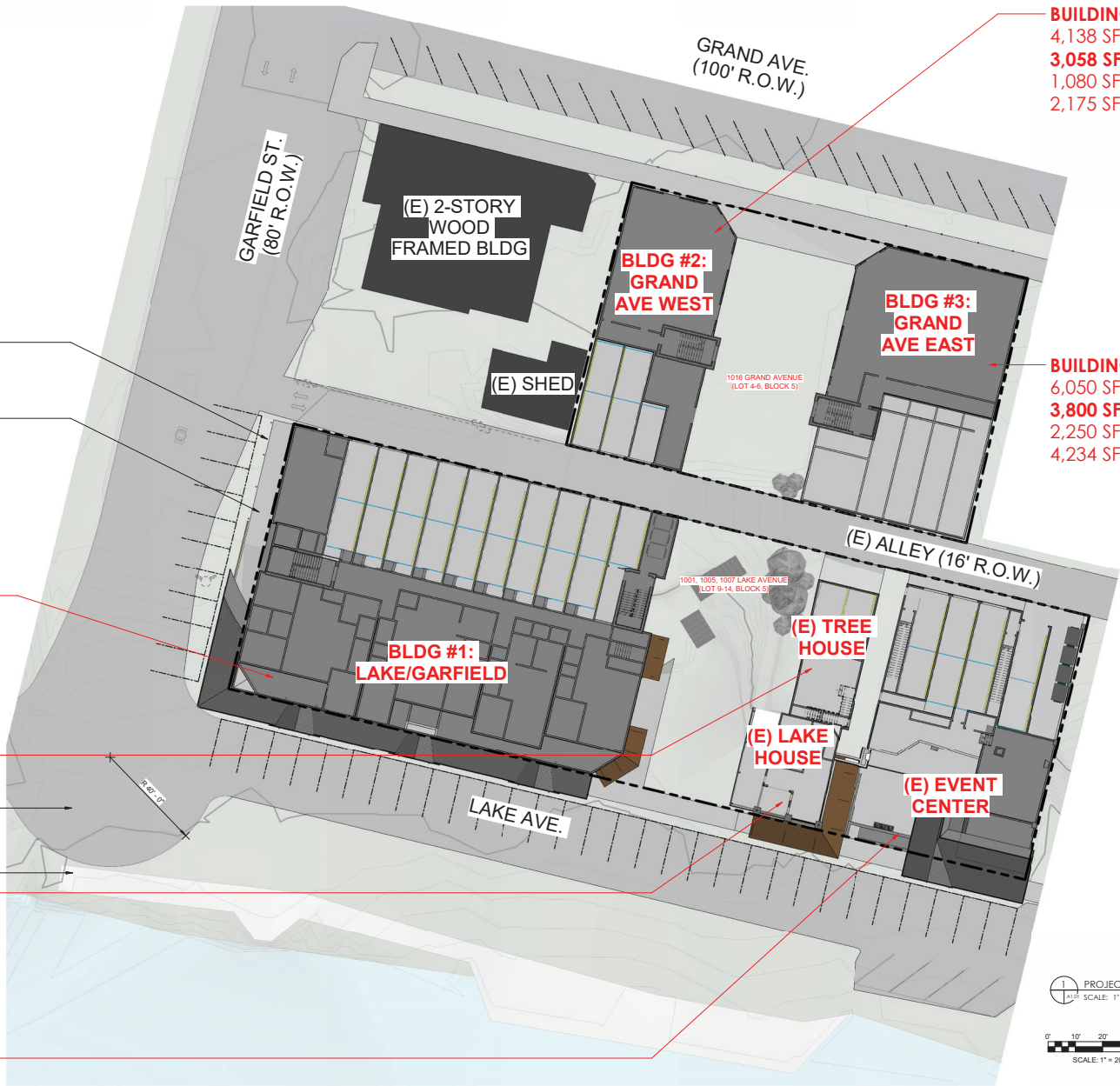
**EVENT CENTER:**  
4,825 SF (TOTAL FP)  
**1,240 SF (LAKE AVE - COMMERCIAL)**  
2,365 SF (LEVEL 1 - PARKING)  
1,104 SF (LEVEL 1 - RESIDENTIAL UNIT - 1)  
2,992 SF (LEVEL 2 - RESIDENTIAL UNITS - 2)

NEW CURB & GUTTER AT NEW BOARDWALK

NEW BOARDWALK (GARFIELD & LAKE)

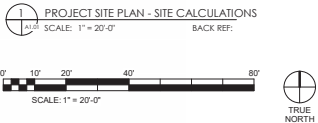
NEW TURNAROUND FOR LOADING/DELIVERIES/ETC

(E) PUBLIC BOARDWALK



**BUILDING #2:**  
4,138 SF (TOTAL FP)  
**3,058 SF (RETAIL - L1)**  
1,080 SF (LEVEL 1 - PARKING)  
2,175 SF (LEVEL 2 - RESIDENTIAL)

**BUILDING #3:**  
6,050 SF (TOTAL FP)  
**3,800 SF (COMMERCIAL - L1)**  
2,250 SF (LEVEL 1 - PARKING)  
4,234 SF (LEVEL 2 - RESIDENTIAL)



SITE PLAN: OPEN SPACE



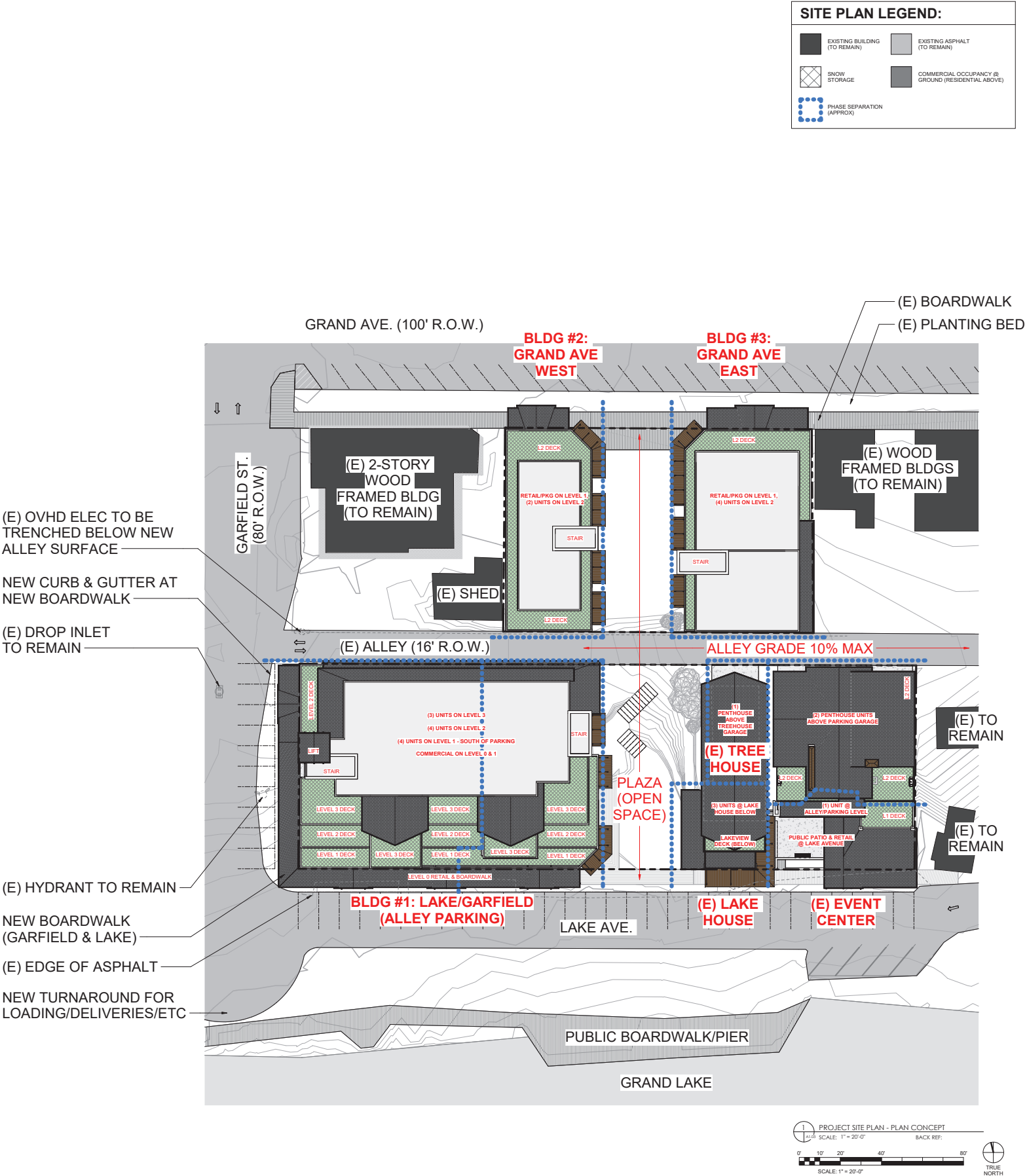


LEATHERWOOD GRAND LAKE

Spirit Lake Condos, LLC  
BLOCK 5, GRAND LAKE, CO 80447  
PROJECT #2402

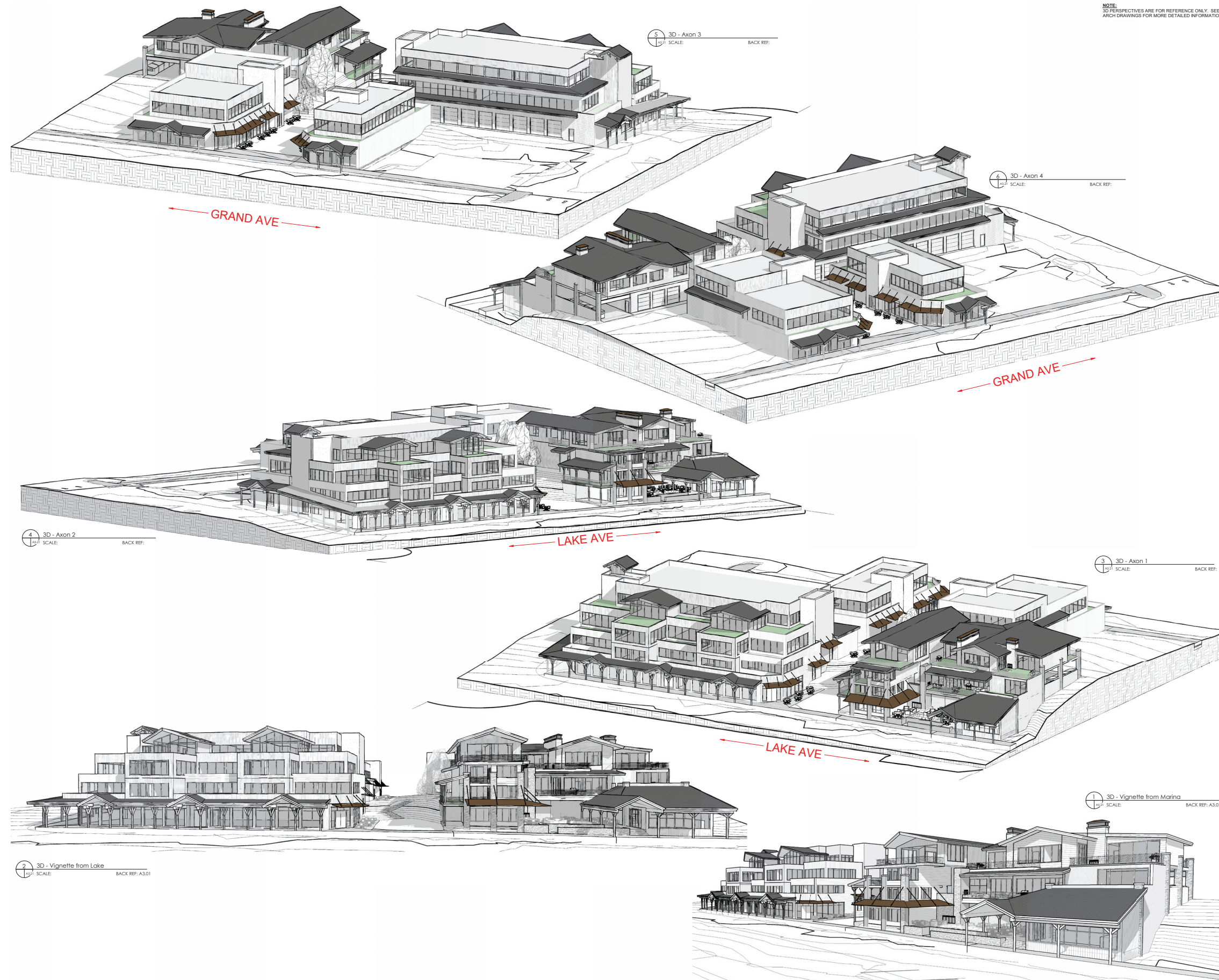
PHASE/PARCEL BREAKDOWN:

- 1. SITE RE-GRADE & PLAZA LANDSCAPING
- 2. EVENT CENTER LAKE AVENUE RESTAURANT AND PLAZA
- 3. EVENT CENTER MAIN FLOOR CONDO UNIT (1)
- 4. EVENT CENTER UPPER LEVEL CONDO UNITS (2)
- 5. (3) CONDOS IN LAKE HOUSE
- 6. (1) CONDO IN TREE HOUSE
- 7. B1 (POTENTIALLY 2 PHASES, PENDING)
- 8. B2
- 9. B3

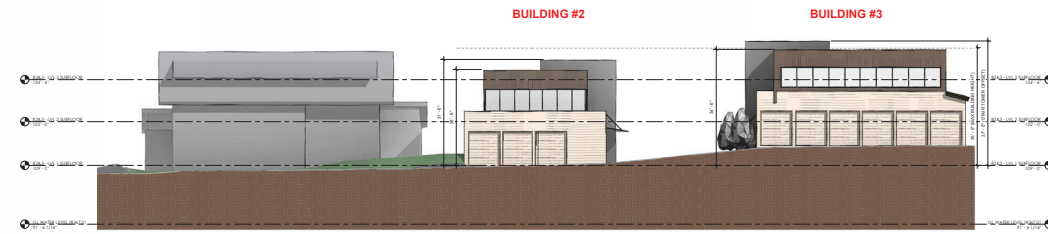


SITE PLAN: PLAN CONCEPT

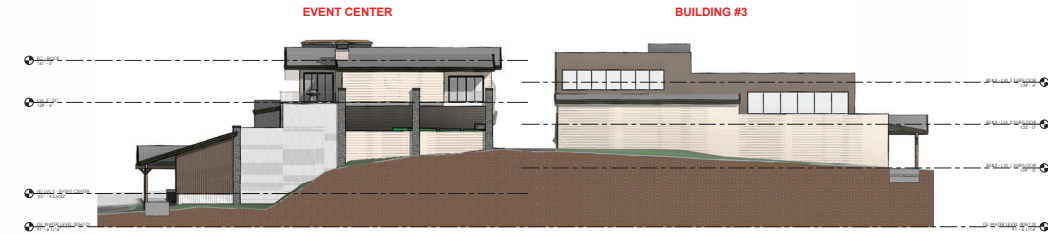




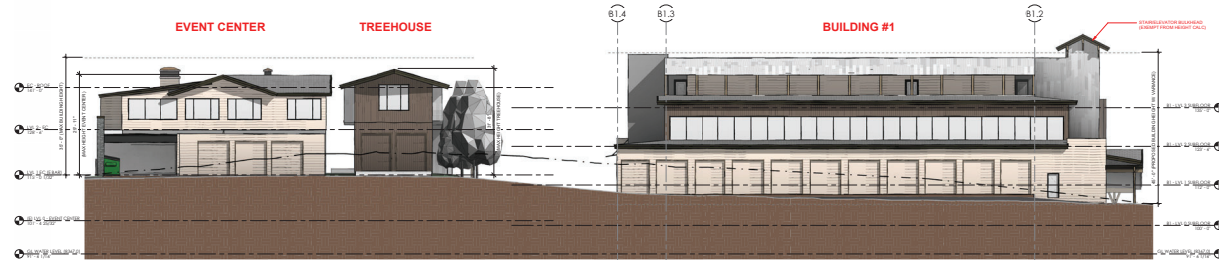




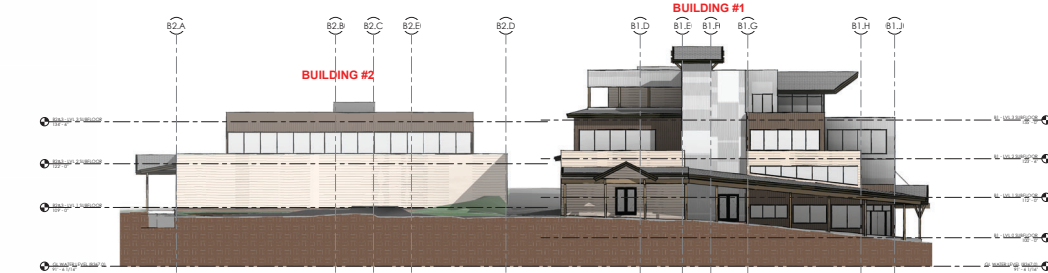
ELEVATION - FROM ALLEY LOOKING NORTH



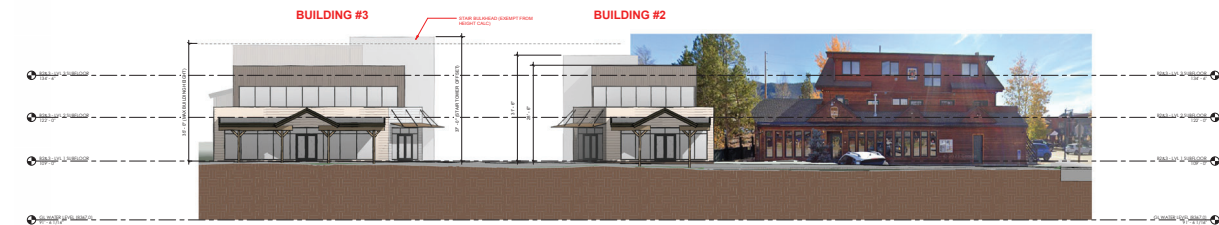
ELEVATION - FROM EAST



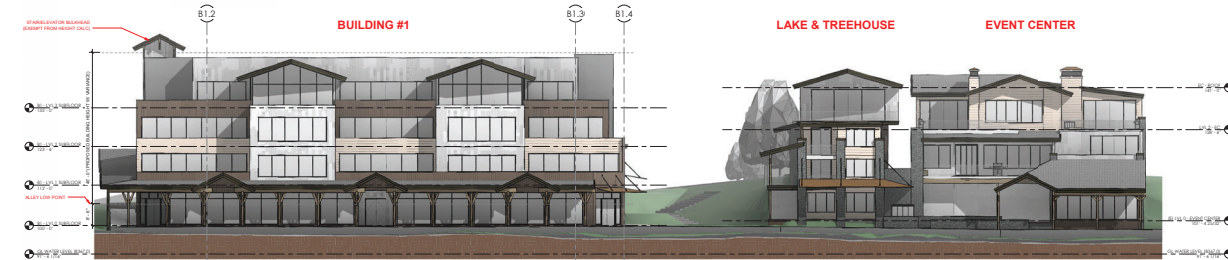
ELEVATION - FROM ALLEY LOOKING SOUTH



ELEVATION - FROM GARFIELD



ELEVATION - FROM GRAND AVENUE



ELEVATION - FROM LAKE AVENUE

ALL ELEVATIONS ARE SCHEMATIC & REPRESENT GENERALIZED MASSING & MATERIALS. EXTERIOR MATERIALS, ROOFLINES, WINDOWS AND STYLE/DETAILS ARE IN-PROGRESS, FLEXIBLE & OPEN TO FEEDBACK.



CONCEPTUAL MASSING - EARLY DEVELOPMENT



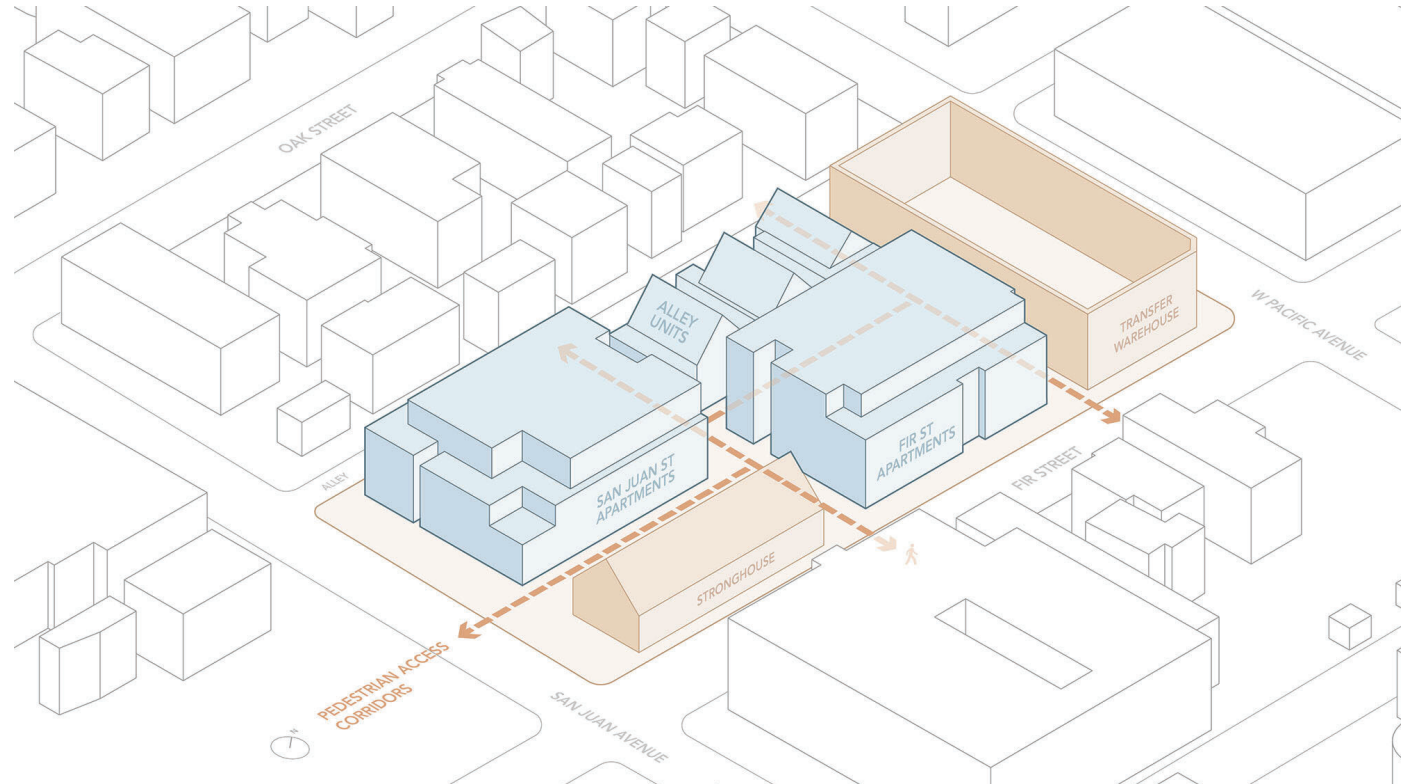
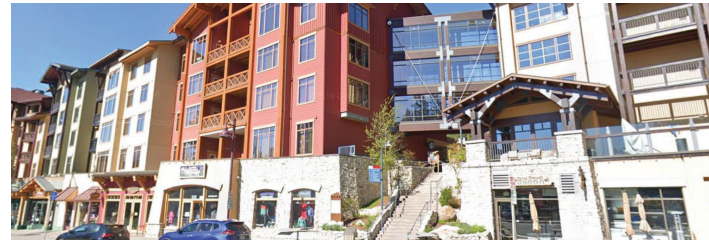


LEATHERWOOD GRAND LAKE

Spirit Lake Condos, LLC

BLOCK 5, GRAND LAKE, CO 80447  
PROJECT #2402





**“TELLURIDE TRANSFER”**

CONCEPT DESIGN - PRECEDENT

**LEATHERWOOD GRAND LAKE**

Spirit Lake Condos, LLC

BLOCK 5, GRAND LAKE, CO 80447

PROJECT #2402