



## **ELECTRIC DEPARTMENT**

### **Significant activities for the month of May 2021**

- 13 Streetlights repaired
- 13 Permanent meter installed
- 1 Temporary meters installed
- 1 Poles installed
- 4 Voltage check
- 3 Utility Verifications

### **In addition to the activities listed above, the Electric Department also:**

- Conducted daily morning safety meetings.
- Conducted daily truck inspections.
- Trimmed limbs and vines from power lines and poles.
- Unloaded transformers and supplies when they come in.
- Inspect/locate ROW permits.
- Conduct warehouse inventory/order supplies.
- 208 N Orange Ave., removed services for demolition.
- 625 Myrtle Ave., removed tree that felt on pole.
- 3465 Olympic Dr., replaced pad-mount transformer that was licking oil.
- 510 N Cypress Ave., disconnected power for repairs to be completed, and reconnected service.
- 1456 Russell Rd., removed services for demolition and overhead line.
- 203 Citizens St., power line down, house knob broke off house installed new one.
- 3672 Oglebay Dr., replaced secondary hand-hole.
- Spring Park, hang The American Flag.
- 4255 Hwy 17., fixed flagpole.
- 1706 Colonial Dr., removed service and cut meter seal for bees' removal.
- City Hall, supervise water department on digging near electric pipe.
- 1000 Pinewood Ct., change out transformer on building 200-300.
- 402 N Pine Ave., installed u-guard to protect wire.
- 385 Roberts St., disconnected power for repairs to meter can.

## **During the month of May, the Electric Department responded to the following outages:**

05/05/2021 – Between 2:34 p.m. – 3:12 p.m., 1017 Forbes St., removed tree from power line, 100 customers affected.

05/06/2021 – Between 9:40 a.m. – 10:00 a.m., 1224 Travers Rd., blown transformer fuse by lightning, 4 customers affected.

05/06/2021 – Between 10:00 a.m. – 5:30 p.m., 1924 Colonial Dr., bad transformer, 100 customers affected.

05/09/2021 – Between 4:30 p.m. – 6:10 p.m., 385 Robert St., bad connections at hand-hole, 2 customers affected.

05/16/2021 – Between 7:00 p.m. – 7:45 a.m., 100 Joey Circle, Apt 402, breaker tripped by kids playing, sealed meters, 1 customer affected.

05/16/2021 – Between 8:04 a.m. – 9:14 a.m., 105 St Johns Ave., blown lateral fuse, 7 customers affected.

05/23/2021 – Between 11:00 a.m. – 1:30 p.m., 111 N Citizens St., blown fuse , 14 customers affected.

05/26/2021 – Between 6:20 p.m. – 7:50 p.m., 927 Walburg St., primary wire down splice burnt up, 10 customers affected.

## **Electric Utility Top Consumption Customers (kwh/meter) for May:**

<b><u>NAME</u></b>	<b><u>SERVICE ADDRESS</u></b>	<b><u>KWH</u></b>	<b><u>AMOUNT</u></b>
Clay County Jail	901 N. Orange Ave.	319,680	\$30,568.08
BD Of County Commissioner	825 N. Orange Ave.	225,600	\$21,808.60
St. Johns Landing	1408 N. Orange Ave.	220,980	\$23,915.84
Kindred Health	801 Oak St.	187,400	\$18,068.40
Winn Dixie Stores, Inc	3260 Hwy. 17 N.	169,000	\$16,799.00
National Gypsum Company	1767 Wildwood Rd	151,680	\$14,484.88
Tamko Roofing Products	914 Hall Park Rd.	116,320	\$12,219.12
BD Of Public Instruction	2025 State Road 16	115,200	\$12,815.20
Governors Creek #436	803 Oak St.	84,000	\$ 8,724.00
Clay County Driver's License	477 Houston St.	76,960	\$ 8,119.76
Clay County Court House	825 N. Orange Ave.	73,920	\$ 7,832.72
Duval Asphalt Products, Inc.	1921 Jersey Ave	67,200	\$ 9,981.20
City of Green Cove Springs	1277 Harbor Road	66,400	\$ 6,285.20
City of Green Cove Springs	Set Street Lights	66,392	\$ 7,381.51
VAC-CON	954 Hall Park Rd.	63,520	\$ 6,507.52
Coral Ridge Foods	1165 N Orange Ave.	56,960	\$ 5,731.36
Pegasus Technologies	932 Pilot Dr.	53,760	\$ 5,659.16
BD Of Public Instruction	1 N Oakridge Ave	50,640	\$ 6,334.64
BD Of Public Instruction	801 Center St.	50,400	\$ 5,478.80
Direct TV/AT&T Services Inc.	512 Center St.	46,720	\$ 4,609.52
City of Green Cove Springs	925 S R 16 East South Wwtp	44,480	\$ 4,482.48
BD Of Public Instruction	Clay High School	44,400	\$ 5,278.40
Ammcon Corp.	1503 County Road 315 Ste 201	43,500	\$ 4,848.50
Clay Port Inc.	972 Bulkhead Rd (meter B)	43,480	\$ 4,986.28

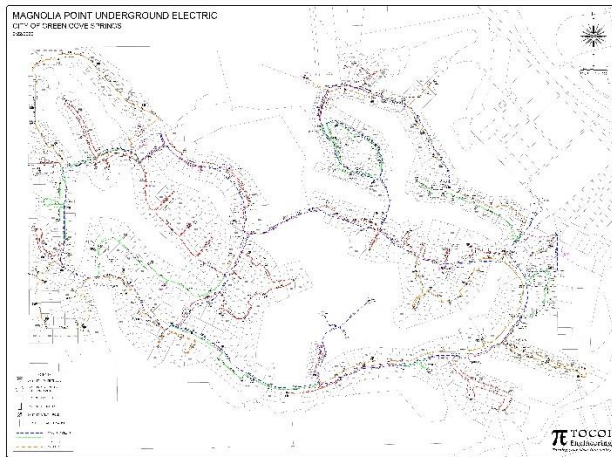
# Electric Utility Department Capital Projects:

## Pole top switch replacement

This project began 09-18-2019 with the installation of switches at Governors Creek for restoration plan if isolation of north feeder across Governors Creek Bridge during extreme emergencies. Project is now in the inspection and evaluation process involving Chapman 2 extension to Harbor Rd and load transfer of Chapman 1 to Chapman 2.

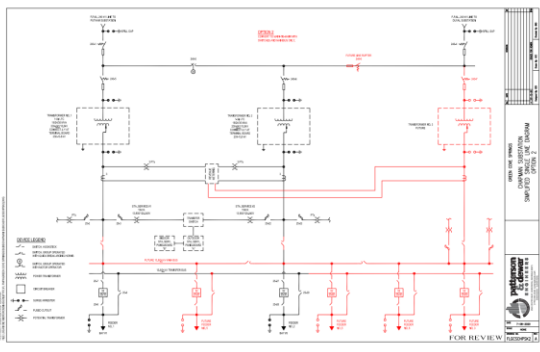
## Magnolia Point Reconductor

This project has been reviewed by our new Electric Director and a local contractor and revised. The project will now focus on a brand new 3-phase backbone “ring” through the development with two feeds. This ring will be constructed as phase 1 utilizing a standing contract to bore in new 6” conduit for the entire ring and utilizing a contractor to pull in the new conductor and tie into the existing side feeds along the way. The re-design is now being completed by our engineer. Conduit and conductor for phase I has been ordered. Work is expected to start in July 2021 with completion by Summer 2022.



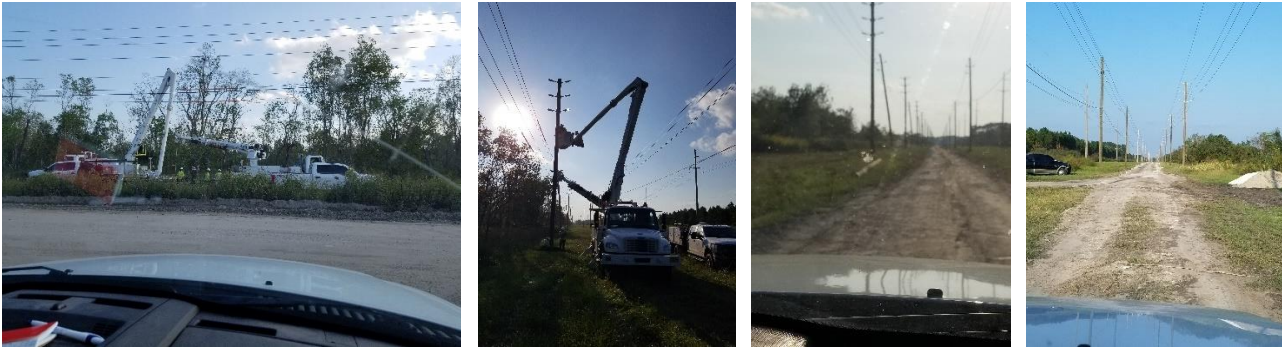
## Chapman Substation upgrade

Patterson and Dewar is the City’s engineering firm for this project. The transformer has been specified and ordered. Patterson and Dewar is designing the rest of the improvements to the substation as well as SCADA to be installed throughout the system. Design is complete. The construction was awarded to Terry’s Electric. They arrived on site the first week of January 2021 to begin work at the substation. The new transformer is set to be delivered June 11, 2021. The project should be complete in August 2021.



## Chapman 3<sup>RD</sup> Circuit

IRBY Construction began September 21, 2020 and the **PROJECT IS NOW COMPLETE.**



## Chapman 1 / Chapman 2

Express circuit feed project of Chapman 1 to north of Governors Creek (a.k.a. **Magnolia Point Third Feed**) and Chapman 2 extension to Harbor Rd project have been combined to balance future load requirements north of Governors Creek and to supply additional restoration procedure options involving electric outages north of Governors Creek. Conductor had been installed on Roberts St. for Chapman 1 alternate path. City crews are now working on additional new line on south right of way that will enable Reynolds Park load to be transferred from Chapman 1 circuit to Chapman 2. Materials for this portion of the project are being funded by a DEO Grant. **PROJECT IS NOW COMPLETE.**

## Houston St. re-conductor

Planning for the reconductoring of Chapman 2 with 477 AAC from Martin Luther King Blvd. to Palmetto Ave. has begun. This will support a second circuit extending north of Governors Creek for restoration involving Magnolia Point, provide an alternate tie between Chapman 1 and Chapman 2 (was not possible before due to conductor size) and support AMMCON, PASS and other future expansion north of Governors Creek. Materials for this project are being funded by a DEO Grant. **PROJECT IS NOW COMPLETE.**

## 13kv to 23kv Conversion – US17 from Harbor Road to CR 315

Planning for this project has begun. This project will continue the Chapman 1 and Chapman 2 circuits north of Harbor Road to provide capacity and reliability for existing and future customers north of Governors Creek. Materials for this project are being funded by a DEO Grant.

## Governors Creek Hardening Project

This project will allow the overhead conductor crossing Governors Creek to be placed underground from Grove Street to Harbor Road. This project has been split into two phases: (1) design and permitting and (2) construction. It is being 75% funded by a FEMA HMGP grant. Phase 1 is complete. The project is now being evaluated by FDEM and FEMA funding for the construction phase. Once funding is in place and a contract is executed, bidding and construction should take approximately 9 months. This project will also support to extension of Chapman 1 and Chapman 2 circuits north of Governors Creek to provide additional capacity and reliability for all customers north of Governors Creek.



**NOTES FOR MANHOLE LOCATIONS AND UG CONDUIT SPANS**

- All manhole locations are shown in yellow circles with a black outline. The manhole number is shown in black text next to the circle.
- Underground conduit spans are shown in yellow lines with black outlines. The conduit size and depth are shown in black text next to the line.
- Manhole locations are shown in yellow circles with a black outline. The manhole number is shown in black text next to the circle.
- Underground conduit spans are shown in yellow lines with black outlines. The conduit size and depth are shown in black text next to the line.
- The manhole locations and underground conduit spans are shown in yellow circles and lines with black outlines. The manhole number and conduit size and depth are shown in black text next to the circle and line.
- The manhole locations and underground conduit spans are shown in yellow circles and lines with black outlines. The manhole number and conduit size and depth are shown in black text next to the circle and line.

The City of Green Creek is the owner of the project. The manhole locations and underground conduit spans are shown in yellow circles and lines with black outlines. The manhole number and conduit size and depth are shown in black text next to the circle and line.

**SURVEY NOTES FOR UNDERGROUND BORE PIPES UNDER GOVERNORS CREEK**

- All manhole locations and underground conduit spans are shown in yellow circles and lines with black outlines. The manhole number and conduit size and depth are shown in black text next to the circle and line.
- Underground conduit spans are shown in yellow lines with black outlines. The conduit size and depth are shown in black text next to the line.
- The manhole locations and underground conduit spans are shown in yellow circles and lines with black outlines. The manhole number and conduit size and depth are shown in black text next to the circle and line.
- Underground conduit spans are shown in yellow lines with black outlines. The conduit size and depth are shown in black text next to the line.
- The manhole locations and underground conduit spans are shown in yellow circles and lines with black outlines. The manhole number and conduit size and depth are shown in black text next to the circle and line.
- Underground conduit spans are shown in yellow lines with black outlines. The conduit size and depth are shown in black text next to the line.

## North and South Substation Improvements

North and South substation sub-station upgrades have begun with directional bore designs completed to install URD 23KV feeds to substation transformers eliminating the possibility of catastrophic failure in the event of lightning or material failure which could cause conductor to fall into existing bus work.