

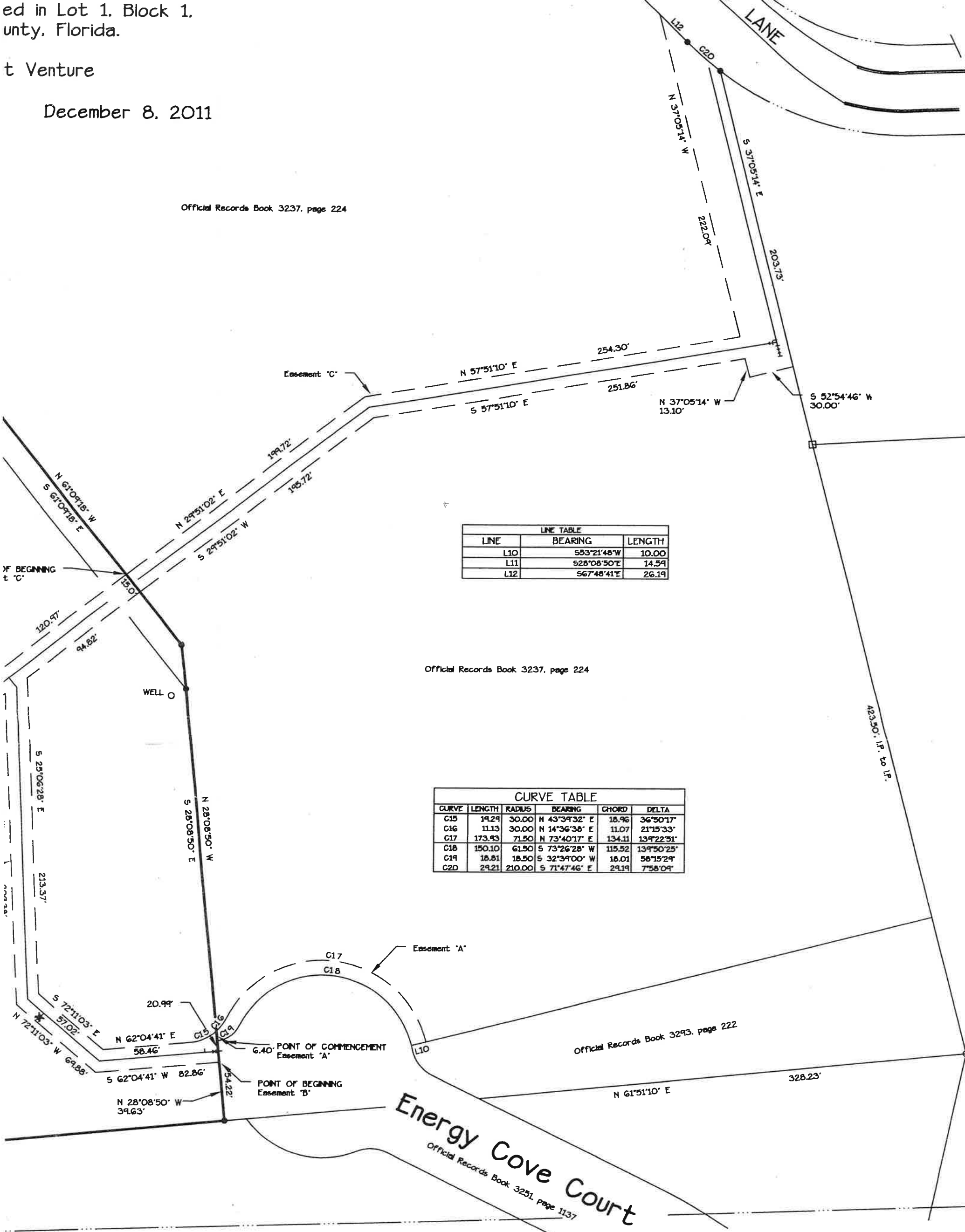


ed in Lot 1. Block 1.  
 untly, Florida.

t Venture

December 8, 2011

Official Records Book 3237, page 224



LINE TABLE

LINE	BEARING	LENGTH
L10	S53°21'48"W	10.00
L11	S28°08'50"E	14.59
L12	S67°48'41"E	26.19

Official Records Book 3237, page 224

CURVE TABLE

CURVE	LENGTH	RADIUS	BEARING	CHORD	DELTA
C15	14.29	30.00	N 43°39'32" E	18.96	36°50'17"
C16	11.13	30.00	N 14°36'38" E	11.07	21°15'33"
C17	173.93	71.50	N 73°40'17" E	134.11	139°22'51"
C18	150.10	61.50	S 73°26'28" W	115.52	139°50'25"
C19	18.81	18.50	S 32°39'00" W	18.01	58°15'29"
C20	29.21	210.00	S 71°47'46" E	29.19	7°58'09"

Official Records Book 3293, page 222

Official Records Book 3251, page 1137

Not valid without the signature and the original raised seal of a Florida licensed surveyor and mapper.

*Harold T. Elland*

Harold T. Elland  
 License No. LS 2518

Elland & Associates, Inc.  
 Professional Surveyors & Mapper  
 Certificate of Authorization No. LB 1  
 615 Blanding Boulevard  
 Orange Park, Florida 32065  
 Telephone 904-272-1000

urposes  
 urvey.