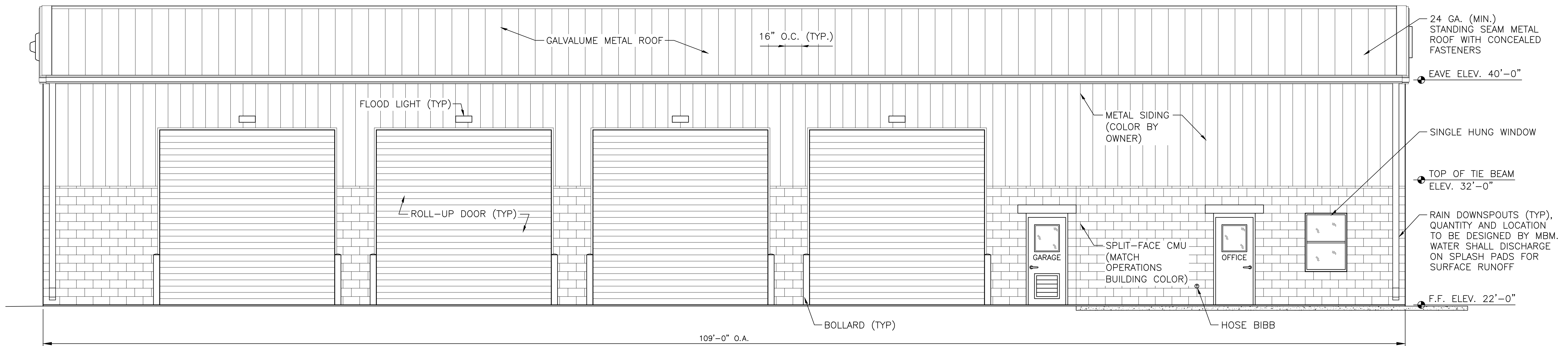


**NORTHEAST ELEVATION**  
1/4" = 1'-0"



**SOUTHWEST ELEVATION**  
1/4" = 1'-0"

TPN  
DESC. DRWN. RBS. JRS.  
PROJ. MGR. DATE 12/16/20  
1 INCH

**MITTALJER & ASSOCIATES, INC.**  
CONSULTING ENGINEERS  
580-1 WELLS ROAD, ORANGE PARK, FLORIDA 32073  
TEL. (904) 278-0030 FAX. (904) 278-0840



CITY OF GREEN COVE SPRINGS  
DEP SRF Harbor Road WRF Expansion Phase 2  
Line Crew Building - Elevations  
Clay County, Florida

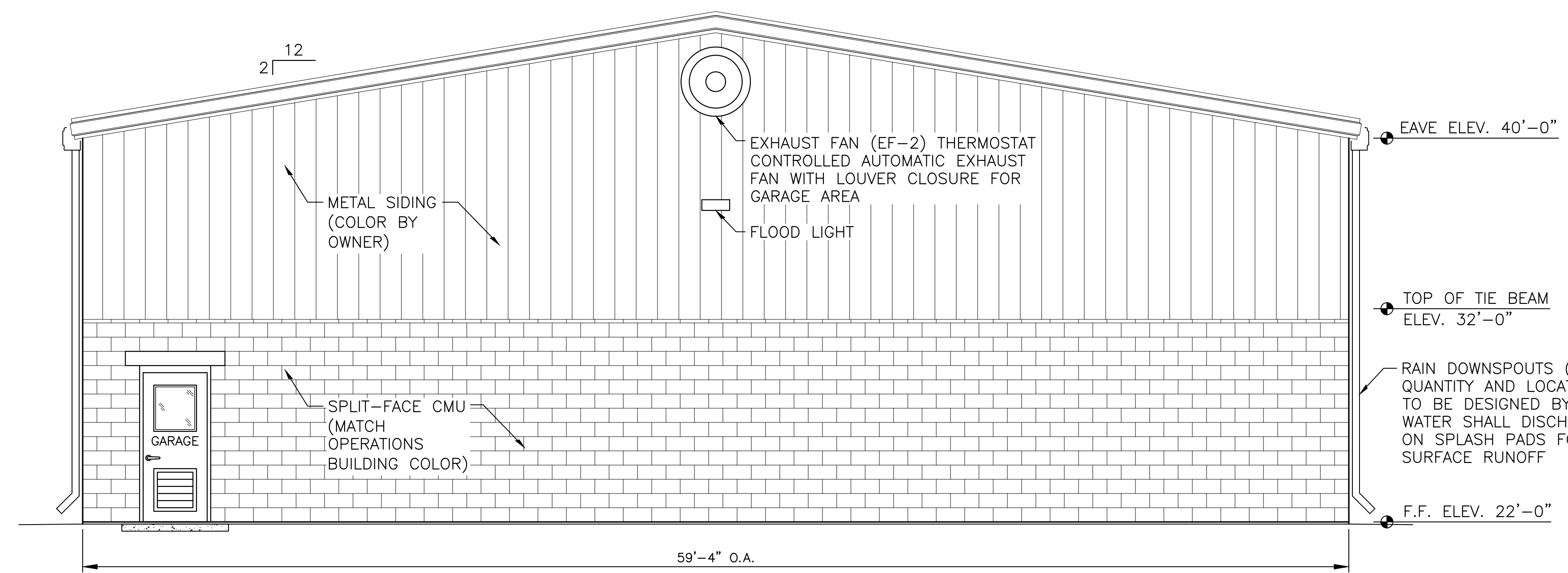
JOB NO.  
8905-56-1  
SHEET NO.

D16.2

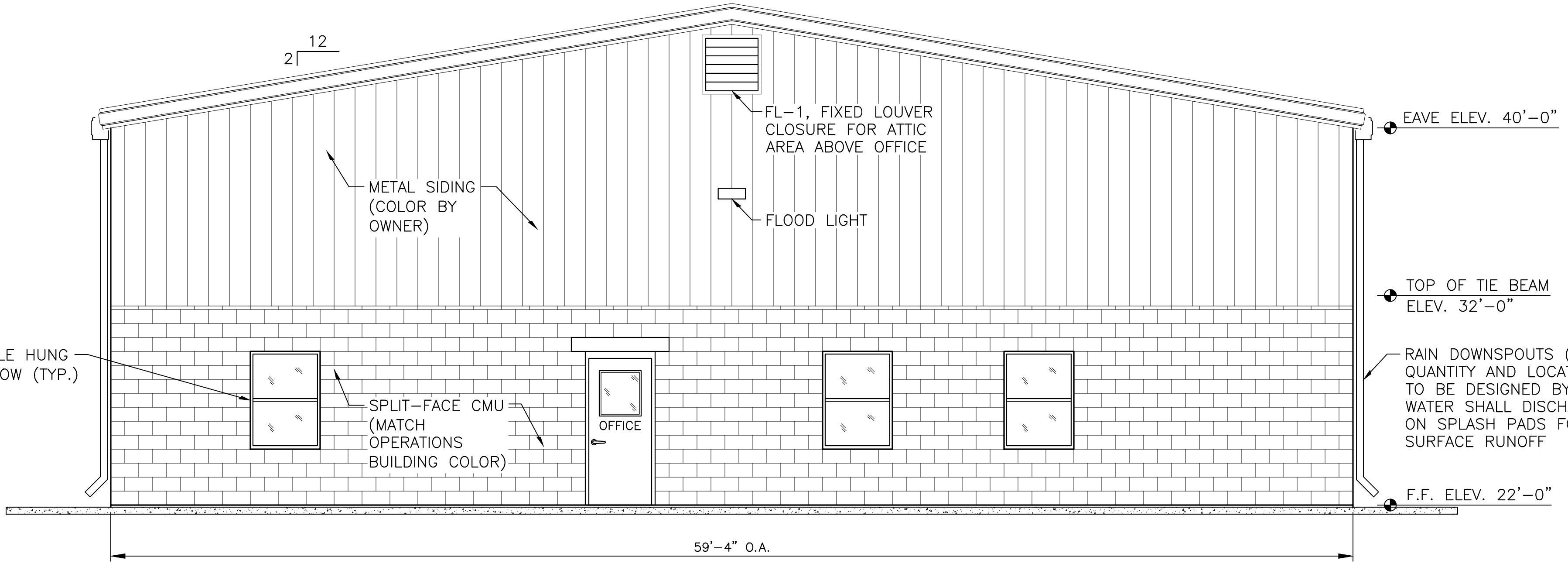
REVISION DESCRIPTION

NO. DATE BY

m:\cad files\green cove springs\8905561 dep.srf harbor rd wrf exp. ph. 2\Design\SHD16.1 -SHT.16.11 Line Crew Bldg.dwg. SHTD16.3. 12/14/2020 9:54:13 AM



**NORTHWEST ELEVATION**  
1/4" = 1'-0"



**SOUTHEAST ELEVATION**  
1/4" = 1'-0"

DOOR, WINDOW & LOUVER SCHEDULE						
NO.	WIDTH	HEIGHT	THICK	MATERIAL		REMARKS
				DOOR	FRAME	
D1	3'-0"	7'-0"	1 3/4"	STEEL	STEEL	HOLLOW METAL LVL 3, HALF LIGHT, WIRE GLASS, LOCKSET WITH DEADBOLT, CLOSER, DOOR & GLASS FIRE RATED FOR 1 1/2 HOUR
D2	3'-0"	7'-0"	1 3/4"	STEEL	STEEL	HOLLOW METAL LVL 3, HALF LIGHT, WIRE GLASS, LOCKSET WITH DEADBOLT, CLOSER
D3	3'-0"	7'-0"	1 3/4"	STEEL	STEEL	HOLLOW METAL LVL 3, HALF LIGHT, WIRE GLASS, LOCKSET WITH DEADBOLT, CLOSER, 24" SQ. LOUVER
D4	14'-0"	14'-0"	-	STEEL	STEEL	MANUAL ROLL UP DOOR
W1	40"	56"	-	-	VINYL	SINGLE HUNG VINYL, LOW E2 INSULATED GLASS, GRILLE, SCREEN
FL-1	30"	30"	-	-	STEEL	FIXED LOUVER
FL-2	48"	72"	-	-	STEEL	FIXED LOUVER

**NOTES:**

1. ALL HOLLOW METAL DOORS SHALL HAVE A 2 LB POLYURETHANE CORE.
2. LOCKSETS & DEADBOLTS SHALL BE ADA COMPLIANT WITH SATIN STAINLESS STEEL FINISH.
3. DOOR FRAMES SHALL HAVE 2" FACE, EQUAL RABBETED, MASONRY BUTTED.
4. ALL LOCKSETS SHALL BE MATCHING KEYPED WITH 6 KEYS DELIVERED TO OWNER.
5. EXTERIOR DOORS TO BE INSTALLED WITH AN ALUMINUM THRESHOLD PLATE.
6. VEHICLE BAY DOOR TO BE INSTALLED WITH AN ELECTRIC DOOR OPENER.
7. ROLL-UP DOORS D14 THRU D19 SHALL BE 26 GAUGE GALVANIZED STEEL DOORS WITH SILICONIZED POLYESTER PAINTED FINISH. DOORS SHALL BE EQUIPPED WITH AN ELECTRIC 1/2 HP, 115V 60Hz OPENER WITH EMERGENCY DISCONNECT AND MANUAL OPERATOR. BASIS FOR DESIGN: GLOBAL INDUSTRIAL - INDUSTRIAL ROLL-UP DOOR - 14'X14'

**GENERAL STRUCTURAL NOTES**

1. All construction shall be in accordance with the local Building & Zoning Department requirements and the 2017 Florida Building Code with all Revisions. All design shall be in accordance with the 2017 Florida Building with all Revisions, ACI318, ACI350 and ASCE 7-16.

Live Loads (minimum):  
 Roofs & Canopies - 20 psf  
 Storage Spaces - 150 psf  
 Stairs & Walkways - 100 psf

Dead Loads: Actual Material Weights  
 Aux. Load = 0 psf  
 Collateral Load = 5 psf

Geotechnical:  
 Design Load Bearing Value of Soil - 2,000 psf

Flood Zone: X; Map No. 12019C0170E

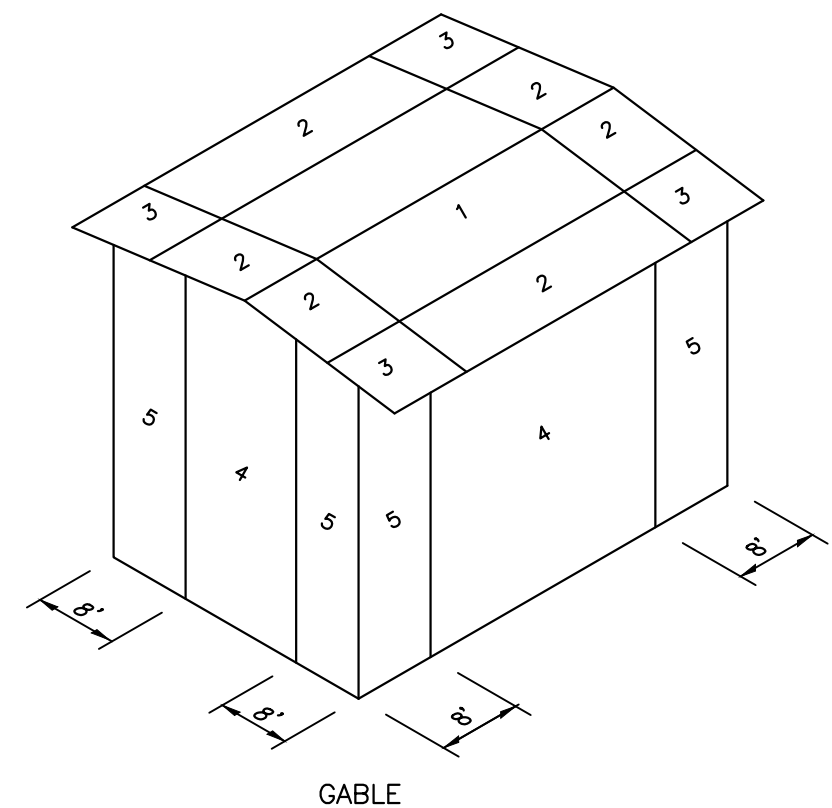
Windload Design Criteria  
 Items per Florida Building Code Section 1603.1.4:  
 Basic Wind Speed: (Vult) = 135 MPH  
 (Vasd) = 105 MPH

Building Risk Category: III  
 Wind Exposure Category: C  
 Mean Roof Height: N/A  
 Roof Slope: N/A

Internal Pressure Coefficients: +/- 0.00 (Open Tanks)  
 +/- 0.18 (Electrical Bldg., Operations, Line Crew Bldg.)  
 +/- 0.56 (Chemical Feed Bldg.)

**COMPONENT & CLADDING PRESSURE**

GABLE ROOF			
ZONE	EFFECTIVE AREA (SF)	WIND PRESSURE (PSF)	
		POSITIVE	NEGATIVE
1	10	26.20	-45.40
	20	25.68	-44.49
	50	25.15	-43.58
	100	24.63	-42.68
2	10	26.20	-76.20
	20	25.68	-73.53
	50	25.15	-70.10
	100	24.63	-67.06
3	10	26.20	-114.60
	20	25.68	-110.59
	50	25.15	-105.43
	100	24.63	-100.85
4	10	45.40	-49.20
	20	42.90	-47.48
	50	39.95	-45.26
	100	37.46	-43.30
5	10	41.50	-76.20
	20	39.22	-70.49
	50	36.52	-62.87
	100	34.24	-58.29
	500	29.05	-45.72



TPN  
DESIGNER  
RBS  
DRAWN  
JRS  
PROJECT MANAGER  
DATE 12/16/20  
1 INCH

**MITTALJER & ASSOCIATES, INC.**  
CONSULTING ENGINEERS  
580-1 WELLS ROAD, ORANGE PARK, FLORIDA 32073  
TEL. (904) 278-0030 FAX. (904) 278-0840

CITY OF GREEN COVE SPRINGS  
 DEP SRF Harbor Road WRF Expansion Phase 2  
 Line Crew Building - Elevations & Schedule  
 Clay County, Florida