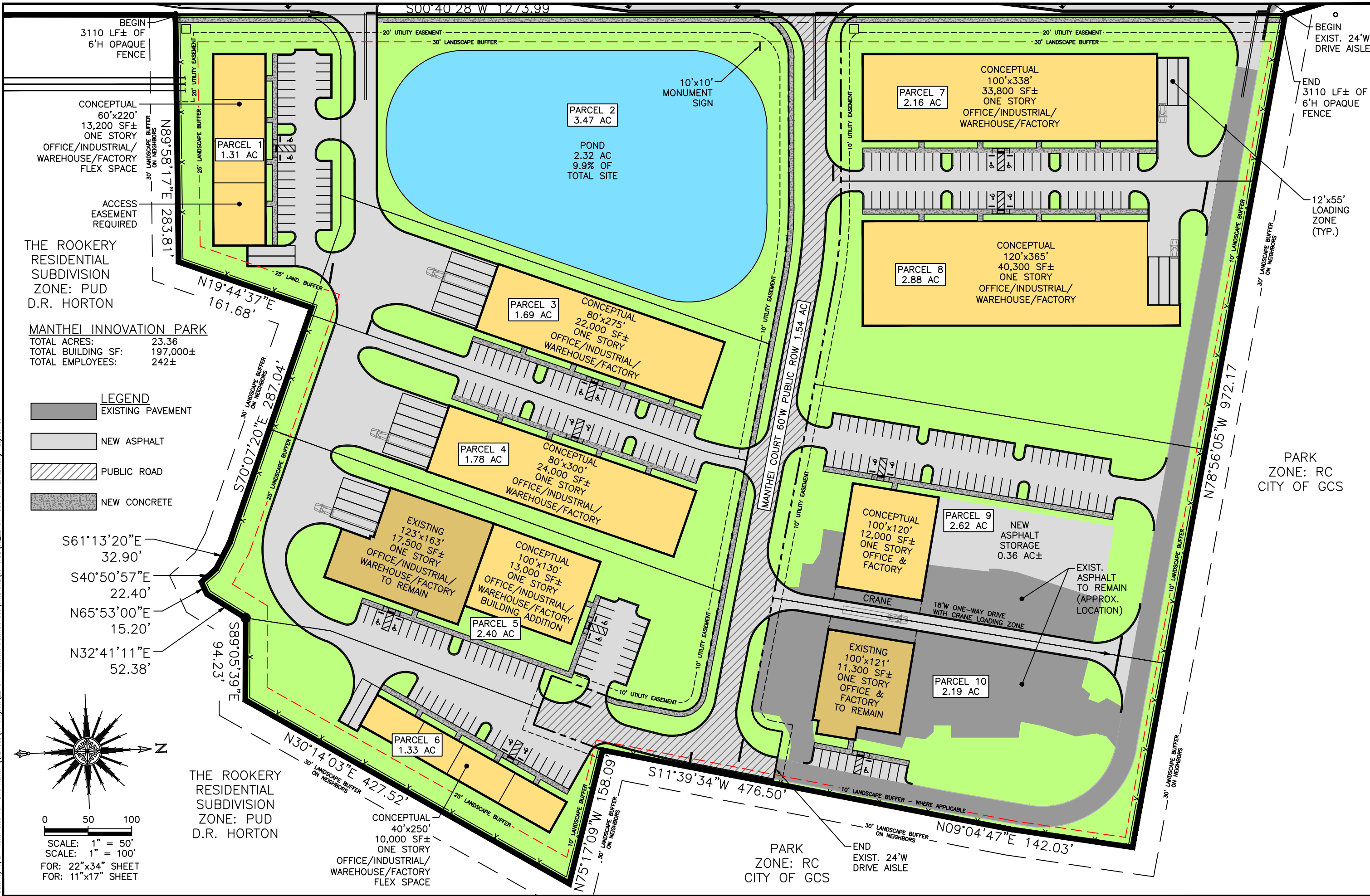


Date: 3/17/24 Time: 3:55 PM DWG Name: \\E-GCS\01-Projects\22-541 TruMont Materials\22-541 TruMont Materials\GCS\03-CADD\03_22-541 GCS CITY EXHIBIT.dwg Layout: C5



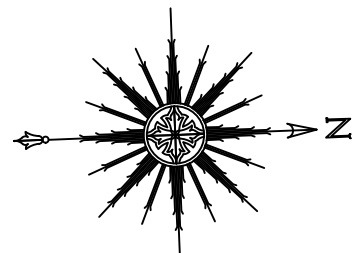
CONCEPTUAL
60'x220'
13,200 SF±
ONE STORY
OFFICE/INDUSTRIAL/
WAREHOUSE/FACORY
FLEX SPACE

THE ROOKERY
RESIDENTIAL
SUBDIVISION
ZONE: PUD
D.R. HORTON

MANTHEI INNOVATION PARK
TOTAL ACRES: 23.36
TOTAL BUILDING SF: 197,000±
TOTAL EMPLOYEES: 242±

- LEGEND**
- EXISTING PAVEMENT
 - NEW ASPHALT
 - PUBLIC ROAD
 - NEW CONCRETE

S61°13'20"E 32.90'
S40°50'57"E 22.40'
N65°53'00"E 15.20'
N32°41'11"E 52.38'



0 50 100
SCALE: 1" = 50'
SCALE: 1" = 100'
FOR: 22"x34" SHEET
FOR: 11"x17" SHEET

THE ROOKERY
RESIDENTIAL
SUBDIVISION
ZONE: PUD
D.R. HORTON

CONCEPTUAL
40'x250'
10,000 SF±
ONE STORY
OFFICE/INDUSTRIAL/
WAREHOUSE/FACORY
FLEX SPACE

PARK
ZONE: RC
CITY OF GCS

PARK
ZONE: RC
CITY OF GCS

TOCOI π Engineering, LLC
714 NORTH ORANGE AVENUE, GREEN COVE SPRINGS, FL 32043
PH: 904-215-1388 E.B. NUMBER: 26383

ENGINEER OF RECORD
CHARLES SOUTH
FLORIDA
REGISTRATION NUMBER:
79289

SITE IMPROVEMENTS
FOR
TRU MONT MATERIALS
CONCEPT DESIGN

REVISIONS

NO.	DATE	DESCRIPTION

PLOT DATE:
DRAWN BY:
DESIGNED BY:
CHECKED BY:
SCALE:
JOB NO.:

SHEET NO.
C5

