

CITY OF GREEN COVE SPRINGS



INDEX OF LIGHTING PLANS

SHEET NO.	SHEET DESCRIPTION
L-1	KEY SHEET
L-2	TABULATION OF QUANTITIES
L-3	GENERAL NOTES
L-4	LIGHTING DATA TABLE AND LEGEND
L-5 - L-7	LIGHTING PLAN
L-8	PARKING LOT LIGHTING PLAN

WALNUT STREET IMPROVEMENTS

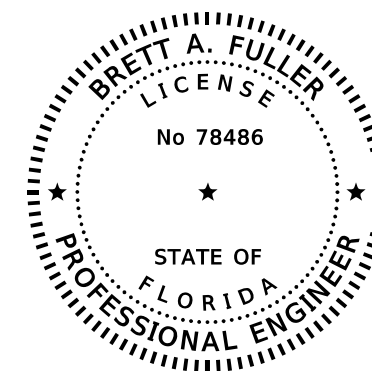
PLANS PREPARED BY:



WGI, INC.
2035 VISTA PARKWAY
WEST PALM BEACH, FLORIDA 33411
TEL: 561-687-2220

NOTE: THE SCALE OF THESE PLANS MAY
HAVE CHANGED DUE TO REPRODUCTION.

THIS ITEM HAS BEEN DIGITALLY
SIGNED AND SEALED BY



ON THE DATE ADJACENT TO THE SEAL
PRINTED COPIES OF THIS DOCUMENT ARE
NOT CONSIDERED SIGNED AND SEALED
AND THE SIGNATURE MUST BE VERIFIED
ON ANY ELECTRONIC COPIES.

ENGINEER OF RECORD: BRETT A. FULLER
P.E. NO.: 78486

CITY OFFICIALS

MATT JOHNSON	MAYOR
CONNIE BUTLER	VICE MAYOR
STEVEN KELLY	COUNCIL MEMBER
THOMAS SMITH	COUNCIL MEMBER
EDWARD GAW	COUNCIL MEMBER
STEVE KENNEDY	CITY MANAGER
MIKE NULL	PUBLIC WORKS DIRECTOR
STEVE THOMAS	ASST. PUBLIC WORKS DIRECTOR

PROJECT OWNER:

CITY OF GREEN COVE SPRINGS
321 WALNUT STREET
GREEN COVE SPRINGS, FL 32043
TEL: 904-297-7058

SHEET
NO.

L-1

TABULATION OF QUANTITIES

PAY ITEM NO.	DESCRIPTION	UNIT	SHEET NUMBERS														TOTAL THIS SHEET		GRAND TOTAL	
			L - 5		L - 6		L - 7		L - 8											
			PLAN	FINAL	PLAN	FINAL	PLAN	FINAL	PLAN	FINAL	PLAN	FINAL	PLAN	FINAL	PLAN	FINAL	PLAN	FINAL	PLAN	FINAL
630-2-11	2" CONDUIT, F&I, OPEN TRENCH	LF	667		809		760		707								2943		2943	
635-2-11	PULL & SPLICE BOX, F&I, 13"X24" COVER SIZE	EA	13		13		12		7								45		45	
639-3-11	ELECTRICAL SERVICE DISCONNECT, RELOCATE POLE MOUNT	EA					1										1		1	
715-1-12	LIGHTING CONDUCTORS, F&I, INSULATED, NO.8-6	LF	2913		3345		3072		2649								11979		11979	
715-7-21	LOAD CENTER, REWORK, SECONDARY VOLTAGE	EA							1								1		1	
715-69-000	LIGHT POLE COMPLETE, REMOVAL	EA					1		3								4		4	
715-500-1	LIGHT POLE CABLE DISTRIBUTION	EA	13		13		11		6								43		43	
715-516-115	LIGHT POLE COMPLETE-SPECIAL DESIGN, F&I, POLE TOP MOUNT, ALUMINUM, 15'	EA	3		5		5		6								19		19	
715-540-000	LIGHT POLE COMPLETE-SPECIAL DESIGN, RELOCATE	EA	9		8		6										23		23	

PAY ITEM FOOT NOTES:

715-7-21: INCLUDES THE COST OF MODIFYING EXISTING LOAD CENTER TO ACCOMMODATE NEW LIGHTING CIRCUIT AND PHOTOCCELL.

REVISIONS

DATE	BY	DESCRIPTION	DATE	BY	DESCRIPTION

BRETT A. FULLER, P.E.
P.E. NO. 78486
WGI, INC.
2035 VISTA PARKWAY
WEST PALM BEACH, FL 33411



PREPARED FOR
CITY OF GREEN COVE SPRINGS

SHEET TITLE: TABULATION OF QUANTITIES	REF. DWG. NO.
PROJECT NAME: WALNUT STREET IMPROVEMENTS	SHEET NO. L-2

THE OFFICIAL RECORD OF THIS SHEET IS THE ELECTRONIC FILE DIGITALLY SIGNED AND SEALED UNDER RULE 61G15-23.004, F.A.C.


GENERAL NOTES FOR LIGHTING

LIGHTING DETAIL

POST TYPE-> WL12ASE120040404UYD1DBL BY VALMONT STRUCTURES
LUMINAIRE TYPE-> EPAS02005A404ABFBLCK BY GECURRENT

1. CAP SPARE CONDUIT FOR MAINLINE AND ARTERIAL ROAD PAVEMENT AT THE PULL BOX.
2. PRIOR TO ANY EQUIPMENT ORDER, SUBMIT FOR APPROVAL EQUIPMENT SPECIFICATION OR DESIGN DATA FOR ALL MATERIAL PROPOSED FOR THE PROJECT. THESE MUST INCLUDE:
 - A) LUMINAIRE PHOTOMETRICS
 - B) POLE STRENGTH CALCULATIONS
 - C) POLE FRANGIBILITY TEST
 - D) BOLT SPECIFICATIONS AND BOLT CIRCLE DIAMETER
 - E) POLE SHOP DRAWINGS
 - F) LOAD CENTER ELECTRICAL EQUIPMENT
3. REFER TO ROADWAY PLANS FOR UTILITY OWNERS AND CONTACT INFORMATION.
4. THE LOCATIONS OF EXISTING UTILITIES AS SHOWN ON THESE PLANS ARE APPROXIMATE AND BASED ON THE INFORMATION FURNISHED TO THE ENGINEER BY THE UTILITY OWNERS AND ARE SHOWN AS NOTICE TO THE CONTRACTOR THAT UNDERSTOOD UTILITIES EXIST. BEFORE EXCAVATING, NOTIFY THE UTILITY COMPANY OWNERS AND REQUEST THEM TO LOCATE AND STAKE THEIR UNDERGROUND FACILITIES. UTILITIES ARE TO BE ADJUSTED BY OTHERS AS DIRECTED BY THE ENGINEER.
5. PROVIDE NOTICE TO THE UTILITY OWNERS PER FLORIDA STATUTE 553.851 AND 556. THESE STATUTES REQUIRE THAT BEFORE EXCAVATION, NOTICE BE GIVEN TO THE UTILITY OWNER A MINIMUM OF TWO (2) DAYS AND A MAXIMUM OF FIVE (5) DAYS, EXCLUDING SATURDAY, SUNDAY AND LEGAL HOLIDAYS. NOT ALL UTILITY COMPANIES ARE MEMBERS OF "SUNSHINE" CALL 811 WWW.CALLSUNSHINE.COM.
6. THE LOCATION OF THE POLES, CONDUCTORS, CONDUITS, JUNCTION BOXES AND SERVICE POLES ARE DIAGRAMMATIC ONLY AND MAY BE SHIFTED BY THE ENGINEER TO ACCOMODATE LOCAL CONDITIONS AND EXISTING UTILITY LOCATIONS.
7. CONTRACTOR TO UTILIZE LUMINAIRE SPECIFIED IN PLANS. ALTERNATIVE LUMINAIRES SHALL NOT BE USED.
8. UTILIZE ALL REQUIREMENTS OF THE LATEST ADOPTED EDITIONS OF THE NATIONAL ELECTRICAL CODE AND THE NATIONAL ELECTRICAL SAFETY CODE FOR ALL ELECTRICAL WORK. PROPERLY GROUND ALL COMPONENTS PER N.E.C. REQUIREMENTS.
9. PROVIDE IDENTIFICATION TAGS FOR ALL ROADWAY LIGHTING. ENSURE TAGS HAVE BLACK LETTERS ON YELLOW BACKGROUND ATTACHED WITH APPROVED ADHESIVE (NO RIVETS OR SCREWS). INCLUDE THE COST OF THE TAGS IN THE BID ITEMS FOR LIGHT POLE COMPLETE. PLACE TAGS 5 FEET ABOVE GRADE AND FACING THE ROADWAY. BEFORE ORDERING TAGS, COORDINATE WITH THE CITY OF GREEN COVE SPRINGS MAINTENANCE FOR PROPER NUMBERING SEQUENCE OF LOAD CENTER AND CIRCUITS.
10. UTILIZE THE LATEST EDITION FDOT UTILITY ACCOMODATION GUIDE FOR ANY JACK AND BORE OPERATIONS.
11. AT LOCATIONS WHERE UNDERGROUND UTILITIES ARE IN CLOSE PROXIMITY TO THE LIGHTING POLE FOUNDATIONS OR CONDUIT RUN, AS DETERMINED BY THE ENGINEER, HAND DIG THE FIRST 4 FEET OF THE HOLE FOR THE POLE FOUNDATION AND CONDUIT RUN.
12. ALL EXCESS DIRT AND DEBRIS EXCAVATED FROM POLE FOUNDATIONS SHALL BE REMOVED.
13. MAINTAIN ACCESS TO ALL SIDE STREETS, PRIVATE AND COMMERCIAL DRIVEWAYS AT ALL TIMES DURING THE CONSTRUCTION OPERATION.
14. THE LIGHTING SYSTEM WILL BE MAINTAINED BY THE CITY OF GREEN COVE SPRINGS UPON FINAL ACCEPTANCE.
15. STABILIZE ALL SOIL EXPOSED DURING INSTALLATION OF LIGHTING FOUNDATIONS AS SOON AS POSSIBLE AND NO LATER THAN SEVEN (7) CALENDAR DAYS.
16. VERIFY ALL EXISTING LIGHTING EQUIPMENT SOURCES PRIOR TO COMMENCING DEMOLITION/REMOVAL WORK.
17. MARK ALL ROADSIDE LIGHTING PULL BOXES WITH "STREET LIGHTING". ENSURE ALL PULL BOXES ARE MADE OF POLYMER MATERIAL, FLUSH WITH THE GROUND, AND RATED ANSI TIER 22 OR HIGHER.
18. CONDUIT LOCATIONS AS SHOWN ON THE PLANS ARE APPROXIMATE. CONDUIT MUST BE PLACED WITHIN THE RIGHT-OF-WAY BUT CAN BE ADJUSTED TO FIT AROUND THE EXISTING AND PROPOSED UTILITIES. WHERE PLANNED LOCATION OF LIGHTING CONDUIT RUNNING 30" UNDER PAVEMENT IS FOUND TO CONFLICT WITH UNDERGROUND UTILITIES, THE LIGHTING CONDUIT MAY BE ALTERED VERTICALLY OR HORIZONTALLY TO AVOID THE CONFLICT AS RECOMMENDED BY THE CONTRACTOR AND APPROVED BY THE ENGINEER. MAINTAIN A 24" ABSOLUTE MINIMUM WHERE LIGHTING CONDUITS ARE RELOCATED CLOSER THAN 30" BELOW THE GROUND SURFACE, PLACE RELOCATIONS AN ADDITIONAL 3" PVC SLEEVE OR BACKFILLED WITH A MIN. 4"X4" OF CONCRETE.
19. INSPECT ALIGNMENT OF EACH INDIVIDUAL POLE AND FIXTURE AS FOLLOWS.
20. MANDREL TEST AND CLEAN ALL CONDUITS. FOR FUTURE USE CONDUITS IN PLACE, PROVIDE 3/4" POLYESTER CORD PULLED IN PLACE AND CAPPED WITH NOTATION INSIDE CONDUIT AS TO LOCATION OF OPPOSITE END. PLACE DUCT MARKER OR PULL BOXES TO MARK END OF EMPTY CONDUITS.
21. CONTRACTOR TO TAKE RESPONSIBILITY FOR LOCATING ANY UNDERGROUND CONDUIT FOR ROADWAY LIGHTING.
22. DO NOT INSTALL LIGHT POLES, PULL BOXES, AND LOAD CENTERS WITHIN ANY DITCH AREAS THAT MAY CAUSE WATER INTRUSION.
23. AS PART OF THE 7 DAY TEST BURNING PERIOD, LABEL EACH CIRCUIT WITH THE LOAD AMPERAGE READING AT THE LOAD CENTER PANEL.
24. PROVIDE TWO RUNS OF CONDUIT FOR EVERY THREE CIRCUITS (6 NON GROUNDED CONDUCTORS). DO NOT INSTALL MORE THAN THREE CIRCUITS IN A SINGLE CONDUIT.
25. PROVIDE ONE SPARE RUN OF 2" CONDUIT AND AND SPARE PULL BOX WITH EVERY DIRECTIONAL BORE.
26. THE CONTRACTOR IS RESPONSIBLE FOR MAINTAINING POWER TO THE ENTIRE LOAD CENTER AND MAINTENANCE OF EXISTING AND PROPOSED LIGHT POLES AND ALL EXISTING, TEMPORARY AND PROPOSED LIGHTING FIXTURES WITHIN THE PROJECT LIMITS FOR THE DURATION OF THE CONTRACT. THIS WILL INCLUDE BUT NOT LIMITED TO THE ROUTINE MAINTENANCE AND/OR ANY DAMAGE BY THE CONTRACTOR AND/OR SUBCONTRACTOR TO LUMINAIRES, FUSES, BALLAST, POLES, BASES, OR ANY INCIDENTAL PARTS. NO MORE THAN 10% OF THE LIGHTS SHOULD BE OUT IN ONE CIRCUIT.

THE OFFICIAL RECORD OF THIS SHEET IS THE ELECTRONIC FILE DIGITALLY SIGNED AND SEALED UNDER RULE 61G15-23.004, F.A.C.

REVISIONS						BRETT A. FULLER, P.E. P.E. NO. 78486 WGI, INC. 2035 VISTA PARKWAY WEST PALM BEACH, FL 33411	 PREPARED FOR CITY OF GREEN COVE SPRINGS	SHEET TITLE:	REF. DWG. NO.
DATE	BY	DESCRIPTION	DATE	BY	DESCRIPTION			GENERAL NOTES	
							PROJECT NAME:		
								WALNUT STREET IMPROVEMENTS	
								L-3	

LIGHTING DATA TABLE

POLE NO.	CIRCUIT	STATION	OFFSET	ARM LENGTH	MOUNTING HEIGHT	PAY ITEM
1	1	STA. 10+85.62 @ CONST. WALNUT ST	22.59' LT	0'	11'	715-540-000
2	1	STA. 11+54.04 @ CONST. WALNUT ST	22.59' LT	0'	11'	715-540-000
3	1	STA. 12+09.79 @ CONST. WALNUT ST	22.60' LT	0'	11'	715-516-115
4	1	STA. 12+60.45 @ CONST. WALNUT ST	24.72' LT	0'	11'	715-540-000
5	1	STA. 13+07.45 @ CONST. WALNUT ST	24.31' LT	0'	11'	715-516-115
6	2	STA. 11+03.73 @ CONST. WALNUT ST	18.70' RT	0'	11'	715-540-000
7	2	STA. 11+76.46 @ CONST. WALNUT ST	18.70' RT	0'	11'	715-540-000
8	2	STA. 11+85.47 @ CONST. WALNUT ST	70.00' RT	0'	11'	715-516-115
9	2	STA. 11+93.98 @ CONST. WALNUT ST	98.07' RT	0'	11'	715-540-000
10	2	STA. 12+25.96 @ CONST. WALNUT ST	18.00' RT	0'	11'	715-540-000
11	2	STA. 12+84.20 @ CONST. WALNUT ST	18.70' RT	0'	11'	715-540-000
12	3	STA. 13+88.35 @ CONST. WALNUT ST	29.16' LT	0'	11'	715-540-000
13	3	STA. 15+20.24 @ CONST. WALNUT ST	29.58' LT	0'	11'	715-540-000
14	3	STA. 15+81.57 @ CONST. WALNUT ST	39.45' LT	0'	11'	715-540-000
15	3	STA. 16+42.98 @ CONST. WALNUT ST	29.88' LT	0'	11'	715-516-115
16	4	STA. 17+11.77 @ CONST. WALNUT ST	20.89' LT	0'	11'	715-516-115
17	4	STA. 17+99.95 @ CONST. WALNUT ST	20.82' LT	0'	11'	715-516-115
18	4	STA. 18+47.74 @ CONST. WALNUT ST	20.82' LT	0'	11'	715-540-000
19	4	STA. 18+85.61 @ CONST. WALNUT ST	20.82' LT	0'	11'	715-516-115
20	4	STA. 19+51.33 @ CONST. WALNUT ST	20.82' LT	0'	11'	715-516-115
21	4	STA. 19+95.33 @ CONST. WALNUT ST	20.82' LT	0'	11'	715-540-000
22	4	STA. 20+39.33 @ CONST. WALNUT ST	20.82' LT	0'	11'	715-516-115
23	4	STA. 21+16.99 @ CONST. WALNUT ST	20.82' LT	0'	11'	715-540-000
24	4	STA. 22+28.44 @ CONST. WALNUT ST	26.20' LT	0'	11'	715-540-000
25	4	STA. 22+77.30 @ CONST. WALNUT ST	28.60' LT	0'	11'	715-516-115
26	4	STA. 23+37.06 @ CONST. WALNUT ST	36.20' LT	0'	11'	715-540-000
27	5	STA. 17+90.43 @ CONST. WALNUT ST	26.99' RT	0'	11'	715-516-115
28	5	STA. 18+53.35 @ CONST. WALNUT ST	27.00' RT	0'	11'	715-540-000
29	5	STA. 18+96.27 @ CONST. WALNUT ST	27.00' RT	0'	11'	715-540-000
30	5	STA. 19+76.52 @ CONST. WALNUT ST	26.99' RT	0'	11'	715-540-000
31	5	STA. 20+48.08 @ CONST. WALNUT ST	26.98' RT	0'	11'	715-540-000
32	5	STA. 20+88.08 @ CONST. WALNUT ST	27.00' RT	0'	11'	715-516-115
33	5	STA. 21+24.00 @ CONST. WALNUT ST	26.99' RT	0'	11'	715-540-000
34	5	STA. 22+01.78 @ CONST. WALNUT ST	26.99' RT	0'	11'	715-540-000
35	5	STA. 23+35.00 @ CONST. WALNUT ST	48.00' RT	0'	11'	715-516-115
36	5	STA. 23+75.05 @ CONST. WALNUT ST	02.10' RT	0'	11'	715-516-115
37	6	STA. 18+68.20 @ CONST. WALNUT ST	72.55' LT	0'	11'	715-516-115
38	6	STA. 18+79.93 @ CONST. WALNUT ST	110.26' LT	0'	11'	715-516-115
39	6	STA. 19+23.60 @ CONST. WALNUT ST	144.48' LT	0'	11'	715-516-115
40	6	STA. 18+52.23 @ CONST. WALNUT ST	147.59' LT	0'	11'	715-516-115
41	6	STA. 18+57.26 @ CONST. WALNUT ST	229.16' LT	0'	11'	715-516-115
42	6	STA. 19+47.95 @ CONST. WALNUT ST	223.73' LT	0'	11'	715-516-115

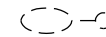
LEGEND

SYMBOLS

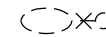
DESCRIPTION



PROPOSED LIGHT POLE WITH POLE TOP MOUNT



EXISTING LIGHT POLE TO REMAIN



EXISTING SINGLE ARM LIGHT POLE AND FOUNDATION TO BE RELOCATED



PROPOSED PULL BOX



2" (UNLESS OTHERWISE SPECIFIED IN PLANS) SCHEDULE 40 PVC UNDERGROUND CONDUIT, OPEN TRENCH, CONTAINING CIRCUIT CONDUCTORS AS INDICATED ON PLANS

CONVENTIONAL LIGHTING DESIGN CRITERIA

AVERAGE INITIAL INTENSITY	3.0 FOOT CANDLES (STD) / 1.5 FOOT CANDLES (MIN)
UNIFORMITY RATIO AVG./MIN.	4:1 OR LESS
UNIFORMITY RATIO MAX./MIN.	10:1 OR LESS
VEILING LUMINANCE	0.3:1 OR LESS
DESIGN WIND SPEED	130 MPH

REVISIONS

DATE	BY	DESCRIPTION	DATE	BY	DESCRIPTION

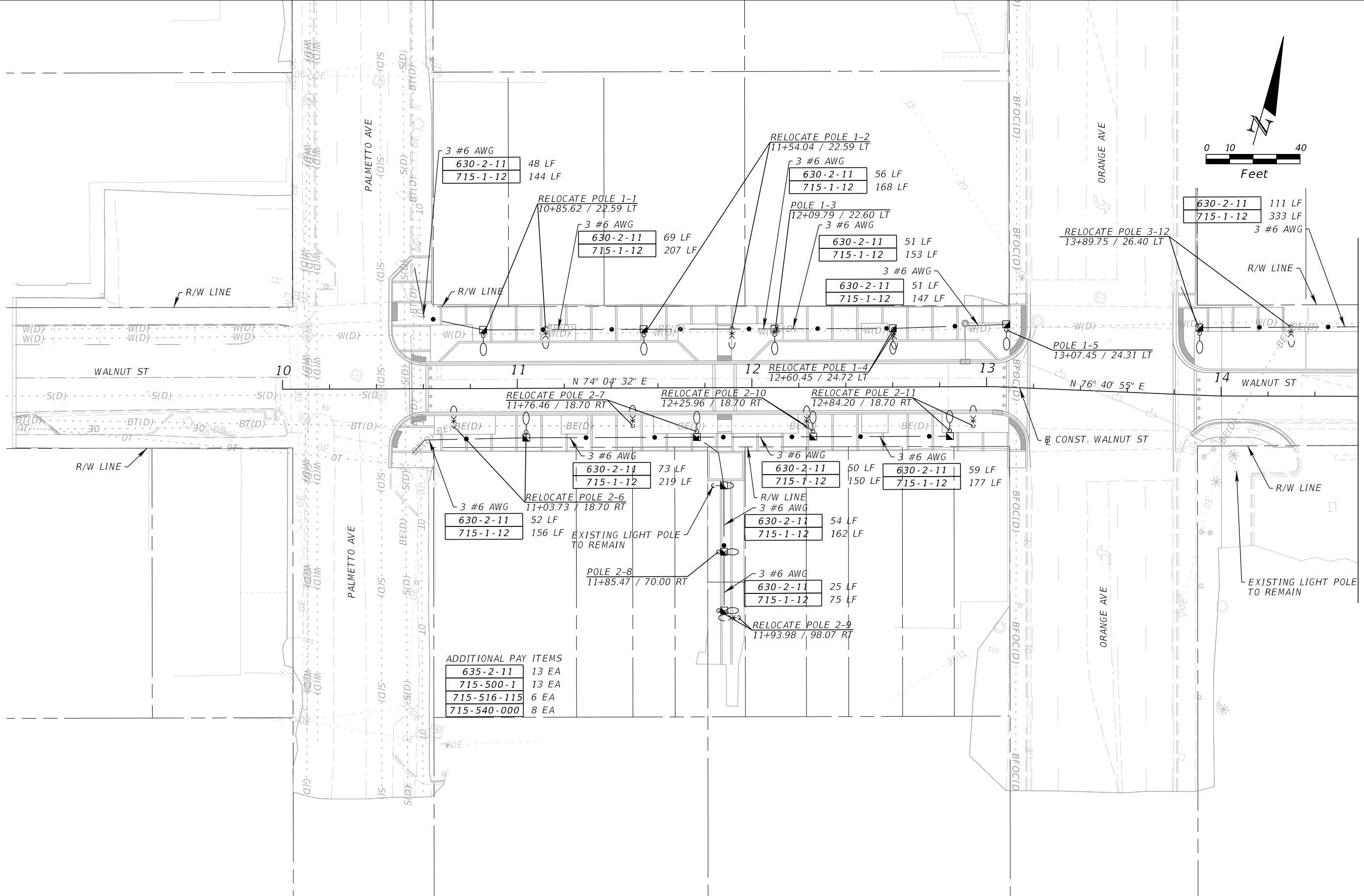
BRETT A. FULLER, P.E.
P.E. NO. 78486
WGI, INC.
2035 VISTA PARKWAY
WEST PALM BEACH, FL 33411



PREPARED FOR
**CITY OF
GREEN COVE SPRINGS**

SHEET TITLE: LIGHTING DATA TABLE AND LEGEND	REF. DWG. NO.
PROJECT NAME: WALNUT STREET IMPROVEMENTS	SHEET NO. L-4

THE OFFICIAL RECORD OF THIS SHEET IS THE ELECTRONIC FILE DIGITALLY SIGNED AND SEALED UNDER RULE 61G15-23.004, F.A.C.



ADDITIONAL PAY ITEMS

635-2-11	13 EA
715-500-1	13 EA
715-516-115	6 EA
715-540-000	8 EA

REVISIONS					
DATE	BY	DESCRIPTION	DATE	BY	DESCRIPTION

BRETT A. FULLER, P.E.
P.E. NO. 78486
WGI, INC.
2035 VISTA PARKWAY
WEST PALM BEACH, FL 33411

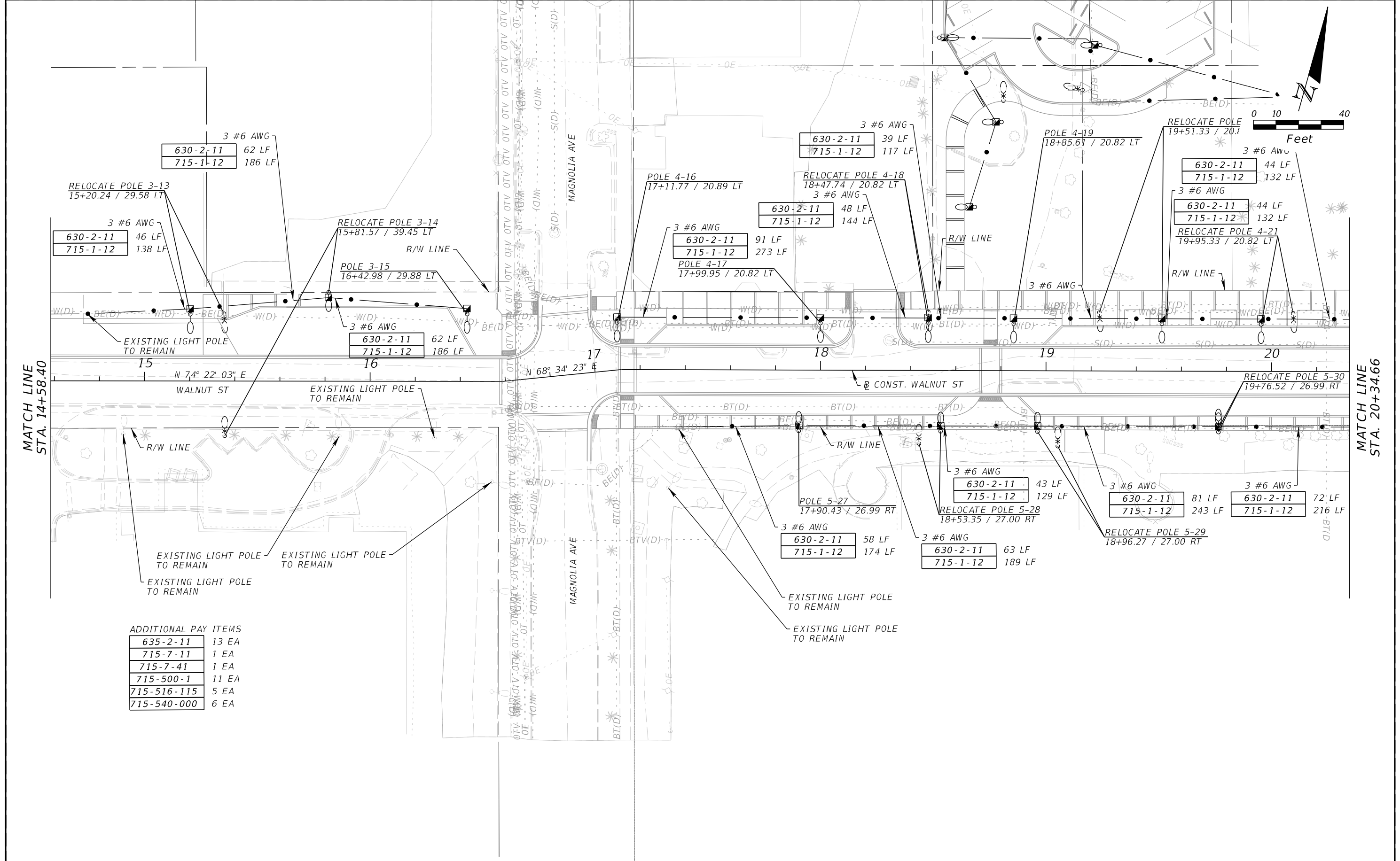
PREPARED FOR

CITY OF GREEN COVE SPRINGS



SHEET TITLE:	LIGHTING PLAN	REF. DWG. NO.
PROJECT NAME:	WALNUT STREET IMPROVEMENTS	SHEET NO.
		L-5

THE OFFICIAL RECORD OF THIS SHEET IS THE ELECTRONIC FILE DIGITALLY SIGNED AND SEALED UNDER RULE 61G15-23.004, F.A.C.



ADDITIONAL PAY ITEMS

635-2-11	13 EA
715-7-11	1 EA
715-7-41	1 EA
715-500-1	11 EA
715-516-115	5 EA
715-540-000	6 EA

REVISIONS					
DATE	BY	DESCRIPTION	DATE	BY	DESCRIPTION

BRETT A. FULLER, P.E.
P.E. NO. 78486
WGI, INC.
2035 VISTA PARKWAY
WEST PALM BEACH, FL 33411

PREPARED FOR

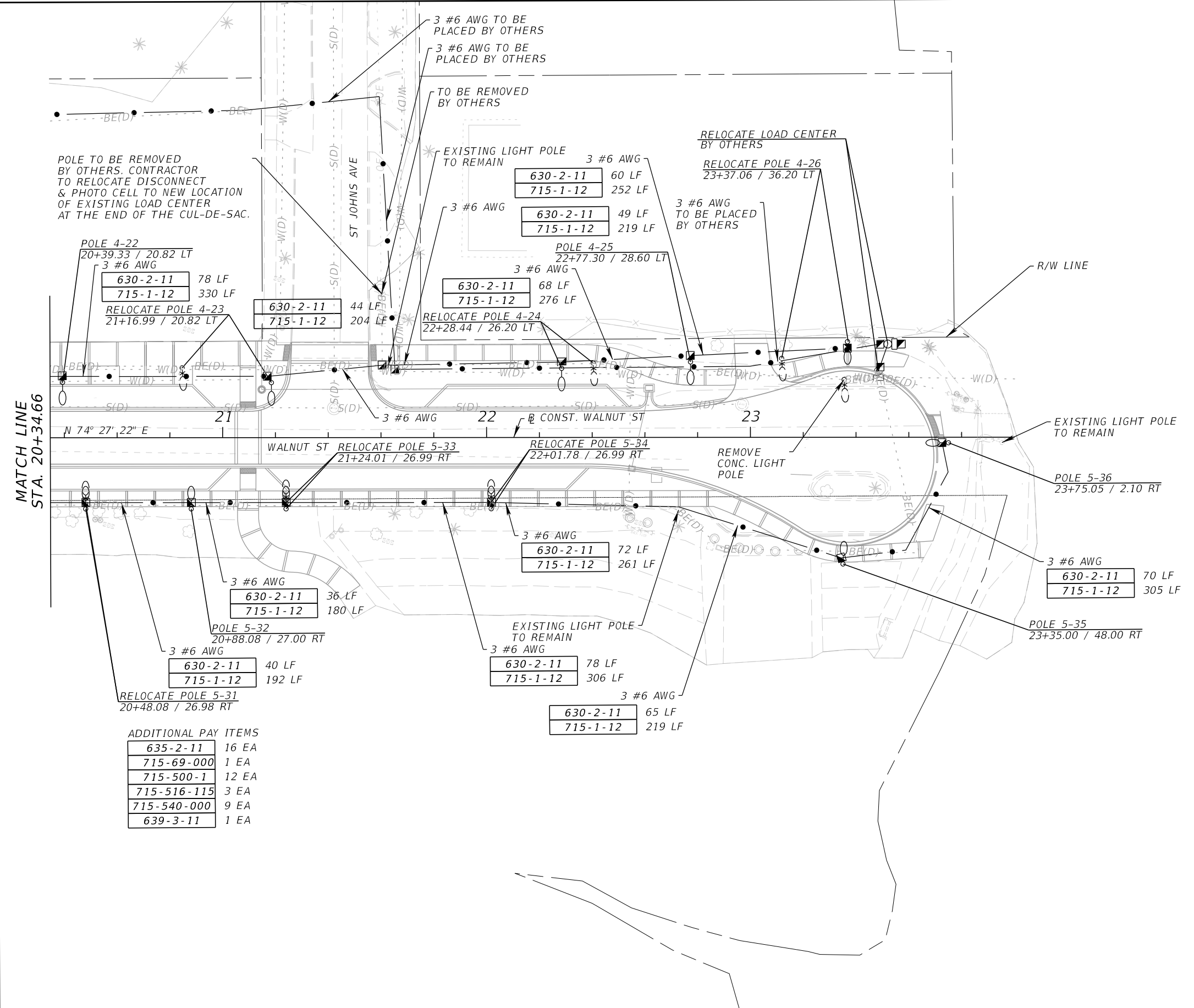
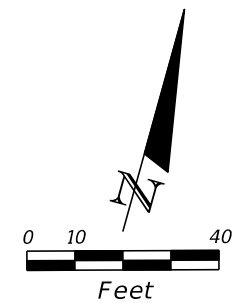
CITY OF GREEN COVE SPRINGS

SHEET TITLE:
LIGHTING PLAN

PROJECT NAME:
WALNUT STREET IMPROVEMENTS

REF. DWG. NO.
SHEET NO.
L-6

THE OFFICIAL RECORD OF THIS SHEET IS THE ELECTRONIC FILE DIGITALLY SIGNED AND SEALED UNDER RULE 61G15-23.004, F.A.C.



POLE TO BE REMOVED BY OTHERS. CONTRACTOR TO RELOCATE DISCONNECT & PHOTO CELL TO NEW LOCATION OF EXISTING LOAD CENTER AT THE END OF THE CUL-DE-SAC.

EXISTING LIGHT POLE TO REMAIN

RELOCATE LOAD CENTER BY OTHERS

MATCH LINE STA. 20+34.66

ADDITIONAL PAY ITEMS

635-2-11	16 EA
715-69-000	1 EA
715-500-1	12 EA
715-516-115	3 EA
715-540-000	9 EA
639-3-11	1 EA

REVISIONS					
DATE	BY	DESCRIPTION	DATE	BY	DESCRIPTION

BRETT A. FULLER, P.E.
 P.E. NO. 78486
 WGI, INC.
 2035 VISTA PARKWAY
 WEST PALM BEACH, FL 33411

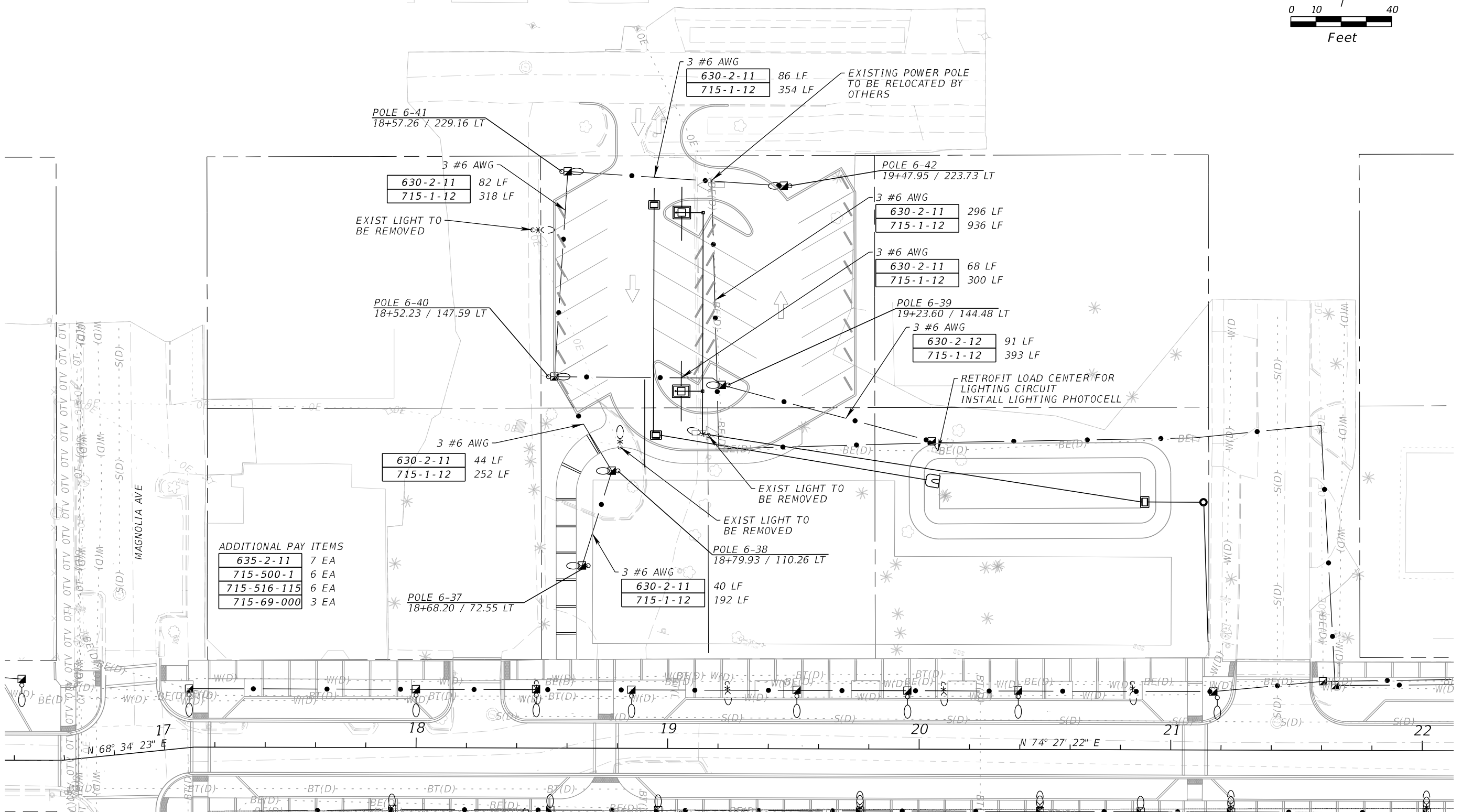
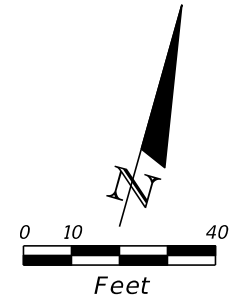
PREPARED FOR



CITY OF GREEN COVE SPRINGS

SHEET TITLE:	LIGHTING PLAN	REF. DWG. NO.	
PROJECT NAME:	WALNUT STREET IMPROVEMENTS	SHEET NO.	L-7

THE OFFICIAL RECORD OF THIS SHEET IS THE ELECTRONIC FILE DIGITALLY SIGNED AND SEALED UNDER RULE 61G15-23.004, F.A.C.



ADDITIONAL PAY ITEMS

635-2-11	7 EA
715-500-1	6 EA
715-516-115	6 EA
715-69-000	3 EA

REVISIONS					
DATE	BY	DESCRIPTION	DATE	BY	DESCRIPTION

BRETT A. FULLER, P.E.
 P.E. NO. 78486
 WGI, INC.
 2035 VISTA PARKWAY
 WEST PALM BEACH, FL 33411

PREPARED FOR
CITY OF GREEN COVE SPRINGS

SHEET TITLE:
PARKING LOT LIGHTING PLAN

PROJECT NAME:
WALNUT STREET IMPROVEMENTS

REF. DWG. NO.
 SHEET NO.
L-8

THE OFFICIAL RECORD OF THIS SHEET IS THE ELECTRONIC FILE DIGITALLY SIGNED AND SEALED UNDER RULE 61G15-23.004, F.A.C.