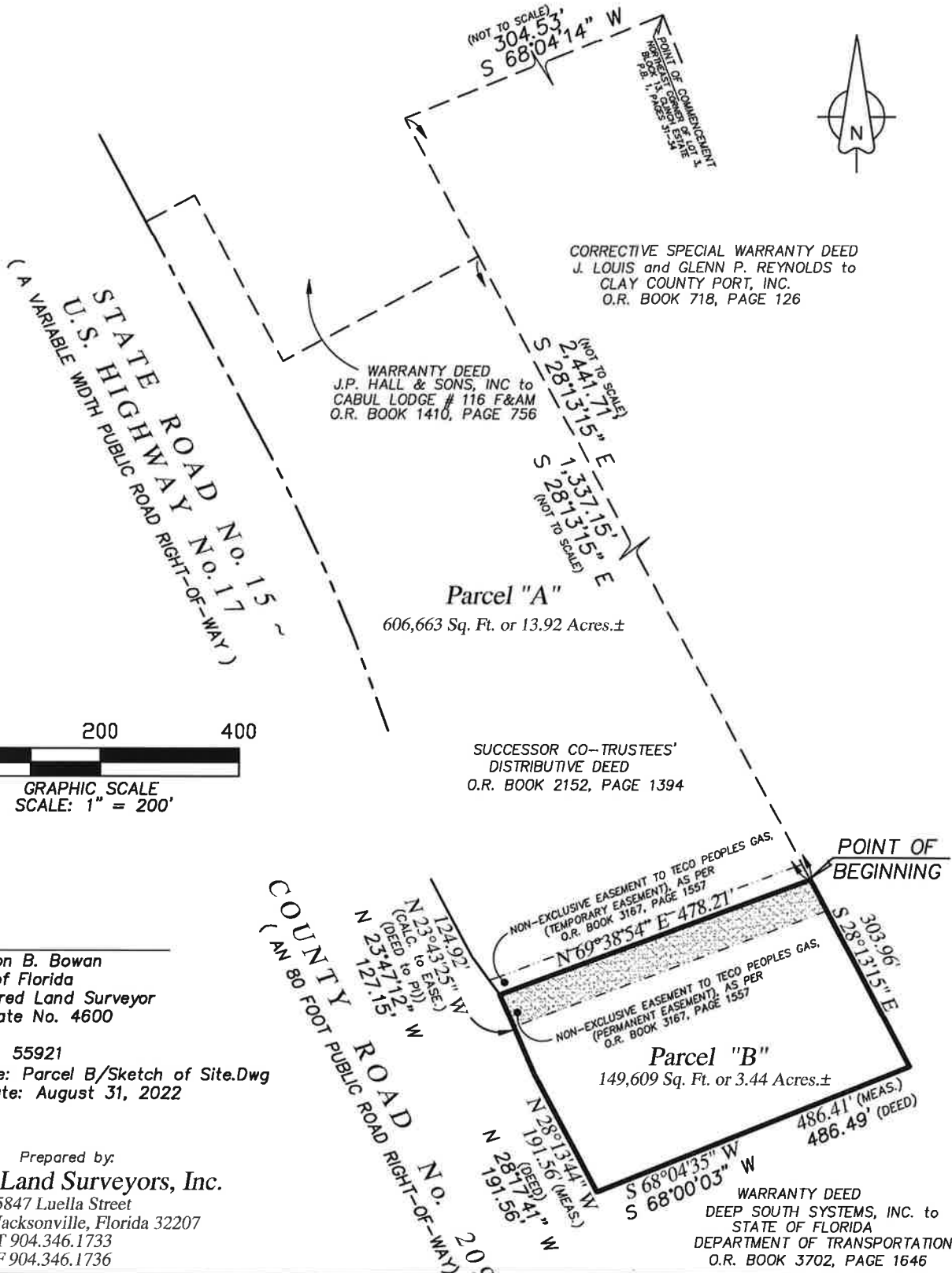


MAP SHOWING SKETCH OF  
A PARCEL OF LAND CONSISTING OF A PORTION OF LOTS 3, 4 AND 5, BLOCK 13,  
CLINCH ESTATE, ACCORDING TO PLAT BOOK 1, PAGES 31 THROUGH 34 OF THE PUBLIC  
RECORDS OF CLAY COUNTY FLORIDA



Jonathon B. Bowan  
State of Florida  
Registered Land Surveyor  
Certificate No. 4600

Job No. 55921  
Cad File: Parcel B/Sketch of Site.Dwg  
Map Date: August 31, 2022

Prepared by:  
**A&J Land Surveyors, Inc.**  
5847 Luella Street  
Jacksonville, Florida 32207  
T 904.346.1733  
F 904.346.1736