



# PUBLIC ART WORKSHOP

Tuesday July 9<sup>th</sup>, 2024



## THE FACILITATORS

Our work is rooted in a commitment to Placemaking, a design perspective that recognizes the relationship between people, transportation, private development, and civic spaces. We think beyond project site boundaries and plan for the *people* and *experiences* of the larger place and community.

# AGENDA



-  **Power of Public Art**
-  **Objective & Process**
-  **Introduce Programs  
& Approved Themes**
-  **Round Tables**
-  **Share Concepts**

# Understanding the Power of Public Art

**Public art can express community values, enhance our environment, transform a landscape, heighten our awareness, or question our assumptions. Placed in public sites, this art is there for everyone, a form of *collective community expression*.**

**-Association for Public Art**

**- PUBLIC ART IS -**

part of...

**public  
history**

part of...

**evolving  
culture**

part of...

**defining  
the *place***



**Green Cove Springs is dedicated to celebrating the unique qualities of the City through community-driven enhancements like Public Art.**

# MURALS



# **OBJECTIVE OF WORKSHOP & PROCESS**



# Process

DAY 1

Introduce the 4  
programs

Collaborate with  
community to create ideas

DAY 2

Advance those  
ideas into elevated  
concepts

DAY 3

Present chosen  
concepts to CRA  
Board

AUG

Create standards to help implement

Set the City up  
for success to  
continue  
adding Public  
Art throughout  
the Downtown  
/CRA areas.

# **4 PROGRAMS & THEMES**

- 1. Utility Boxes**
- 2. Trash Cans**
- 3. Historic Plaques**
- 4. Storm Drains**

**4**

**PUBLIC ART  
PROGRAMS**

# Templates:

[www.greencovesprings.com/DocumentCenter/View/936/GCS-PublicArt-Templates](http://www.greencovesprings.com/DocumentCenter/View/936/GCS-PublicArt-Templates)

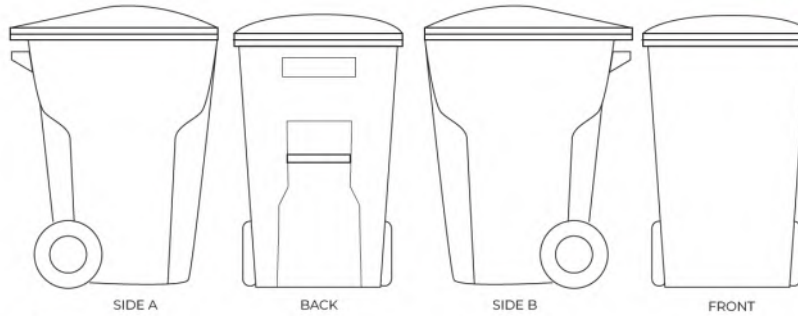
**TEMPLATE: UTILITY BOX**

The diagram shows a utility box with a front door featuring a handle and a lock mechanism. The front view is labeled 'FRONT', and the side and back views are labeled 'SIDE' and 'BACK' respectively. A small circular logo for Green Cove Springs is in the top right corner.



GREEN COVE SPRINGS

**TEMPLATE: TRASH CAN B**



Reference



**TEMPLATE: HISTORIC HOTELS PLAQUE A**  
MOUNTED ON FRONT OF BUILDING

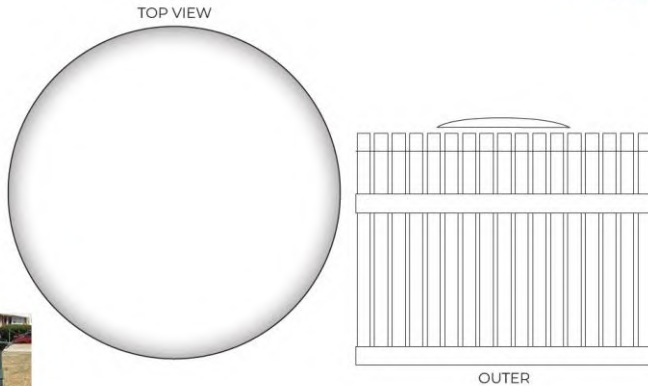


is open to different compositions/sizes/shapes for the Hotel Plaques. You are encouraged to think creatively about solutions.



Artist Name: \_\_\_\_\_  
 Address: \_\_\_\_\_  
 Phone: \_\_\_\_\_

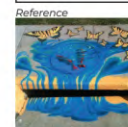
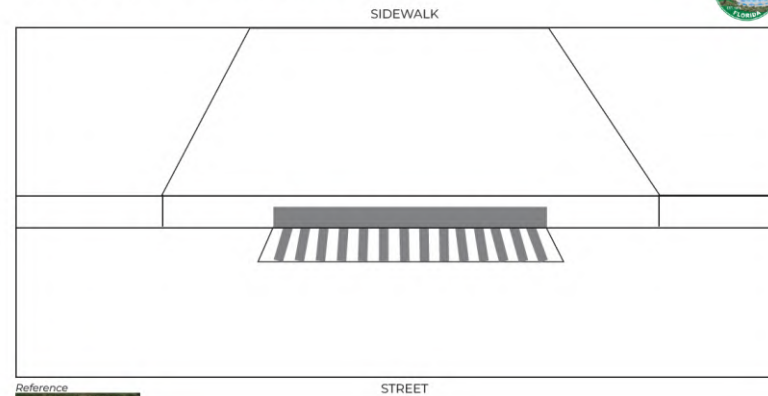
**TEMPLATE: TRASH CAN A**



GREEN COVE SPRINGS | PUBLIC ART PROGRAM

Artist Name: \_\_\_\_\_  
 Description: \_\_\_\_\_  
 Email/Phone: \_\_\_\_\_

**TEMPLATE: STORM DRAIN**



GREEN COVE SPRINGS | PUBLIC ART PROGRAM

Artist Name: \_\_\_\_\_  
 Description: \_\_\_\_\_  
 Email/Phone: \_\_\_\_\_

# Utility Boxes





# Trash Cans









1. Haddon Hall
  2. Cherokee Hotel
  3. Sulphur Springs Hotel
  4. Clerke's Drug Store
  5. Magnolia Hotel
  6. Magnolia Hotel Cottages
  7. Clarendon / Qui Si Sana
  8. Springs Pool and Park
  9. Riverside Hotel
  10. St Elmo Hotel
  11. Pines Hotel
  12. Tyler House
  13. Applegate House
  14. Historic Triangle
  15. Hibernia Hotel
  16. Oakland Hotel
  17. Mohawk Hotel
- CRA Boundary

12



5



5



7



*Hotels of Green Cove Springs*

9



10



3



Salphur Spring and Casino, Green Cove Springs, Fla.

17





Uptown Westerville

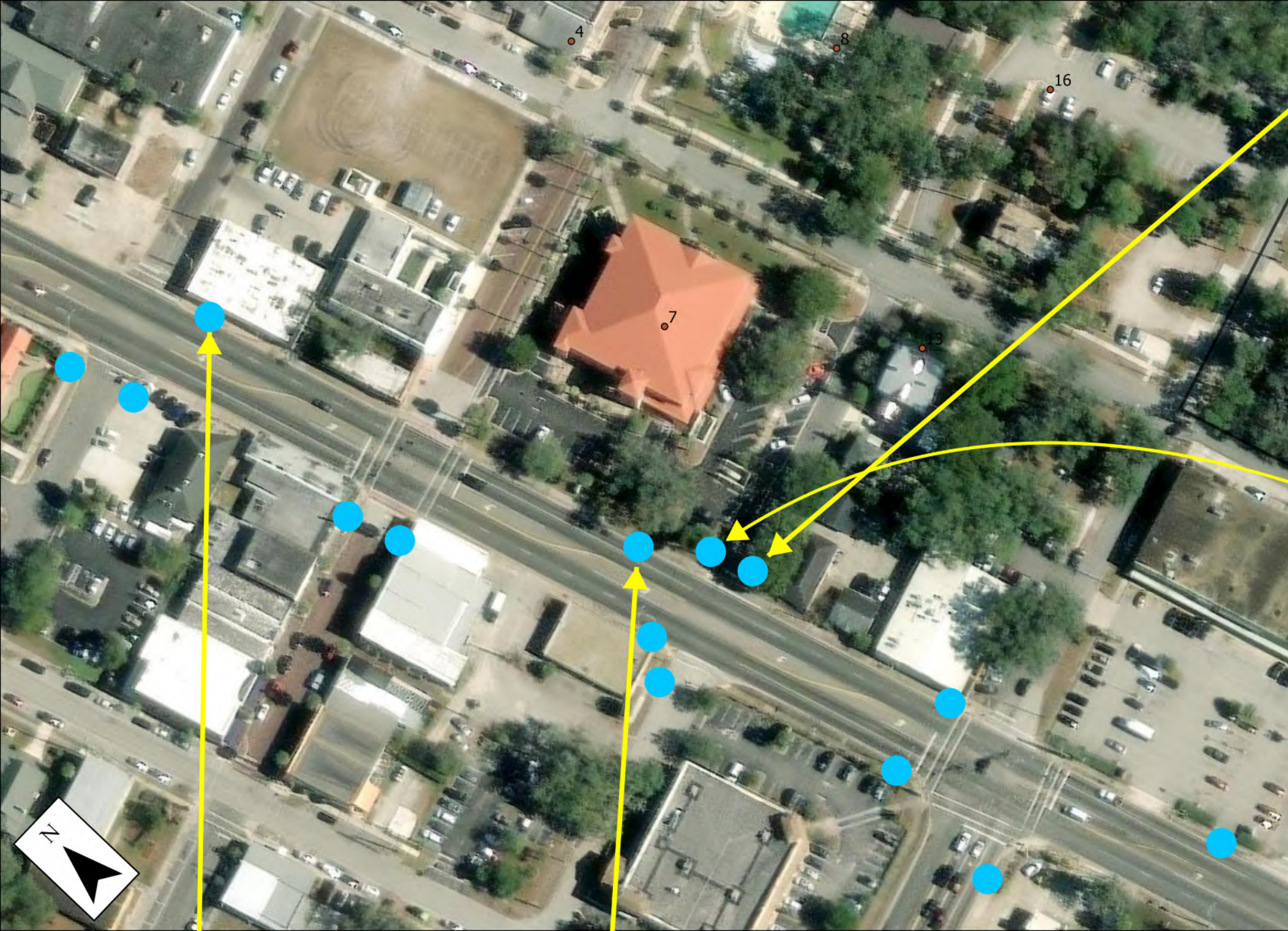
**Robinson Block**

The Robinson Block is one of the oldest structures in Uptown Westerville. It was home to drugstore businesses from its construction in the early 1870s until Brinkman's Retail Pharmacy closed in 1994.

Original building owner, George W. Robinson, was a long-time businessman in town including being the operator of a "hack" or horse-drawn cab. Prior to the railroad coming to town in 1873, Robinson regularly transported college students and other train travelers to and from "Otterbein Station" (a few miles to the west in Sharon Township).

In 1874, George Robinson, a member of the Masons, agreed to the addition of a third floor to this building to house Bleedon #339 Masonic Lodge Hall. The hall featured a hardwood floor with raised outer circumference. The





Stormwater Inlets

# Storm Drains



**Natural Springs/Water**

**Boats/Ships**

**Dairy Cows (ex. Gustafson Dairy Farm )**

**Monarch Butterflies (member of Monarch City USA)**

**Bees/Conservation of Nature**

**Celebrate History of GCS & Historic Structures**

**Celebrate Historic Figures (ex. Augusta Savage)**

# **City Approved Themes**

# ROUND TABLES ACTIVITY

Go to your assigned number table, when music stops, we will rotate

# SHARE YOUR CONCEPTS

Anyone who wants to present their ideas, raise your hand



# Next Steps:

- 1 Scan/document all ideas from the workshop and send to City to archive for future reference**
- 2 Inspire will be working on advancing 5 concepts per program to present to the CRA Board**
- 3 Inspire will create process documents for implementation**
- 4 The community/local artists will work with the City staff to begin painting approved designs through CRA funding**



**THANK YOU!**