



Our Water Cycle

January 13, 2026

Green Cove Springs City Council
Special Session

2026 Water, Wastewater, Reclaimed
Water Rate Study



AGENDA

- ▶ INTRODUCTIONS / OPENING
- ▶ DRINKING WATER SOURCES
- ▶ WATER TREATMENT
- ▶ WASTEWATER TREATMENT
- ▶ EFFLUENT DISPOSITION / RECLAIMED WATER
- ▶ FUTURE
- ▶ OPEN DISCUSSION / CLOSE



W / WW / RW SERVICE AREA

3



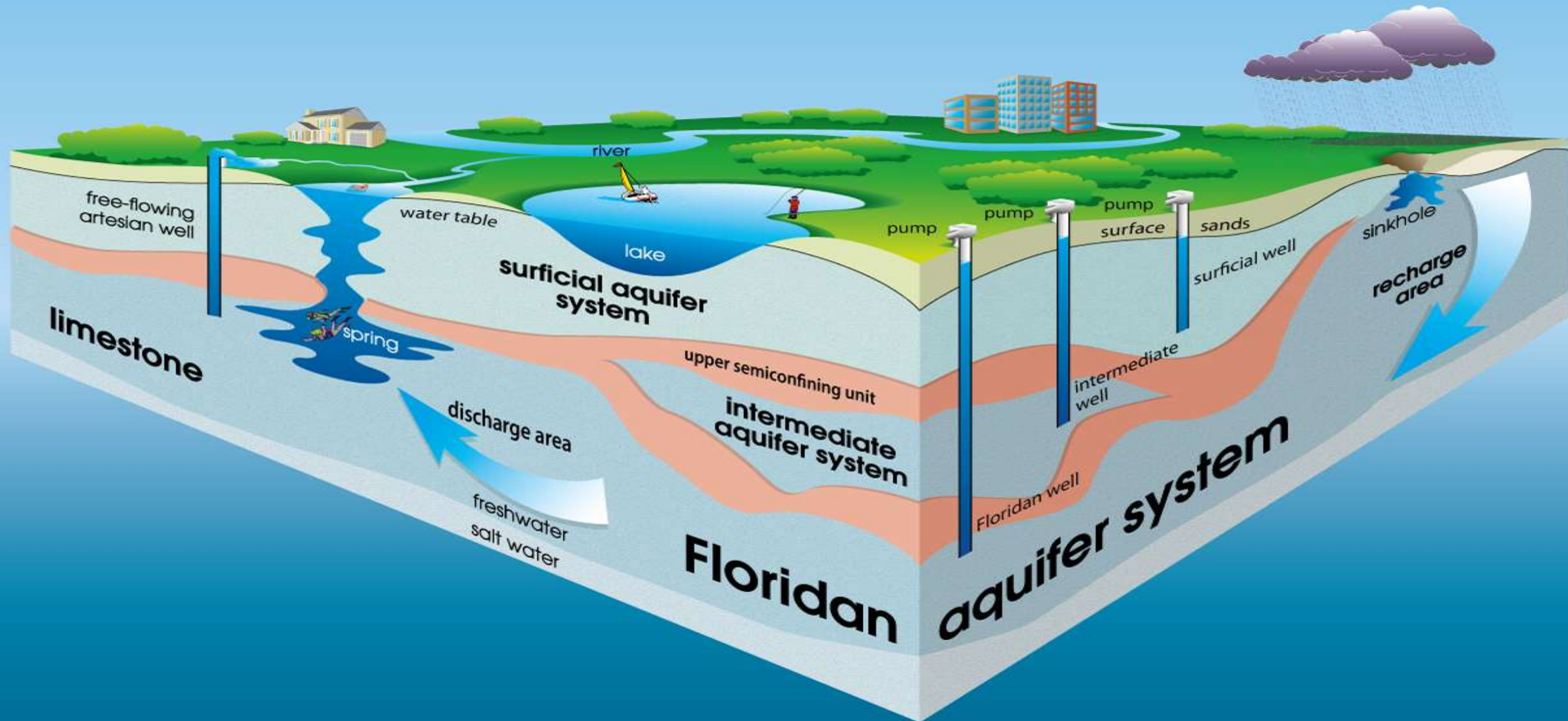
3



FLORIDAN AQUIFER

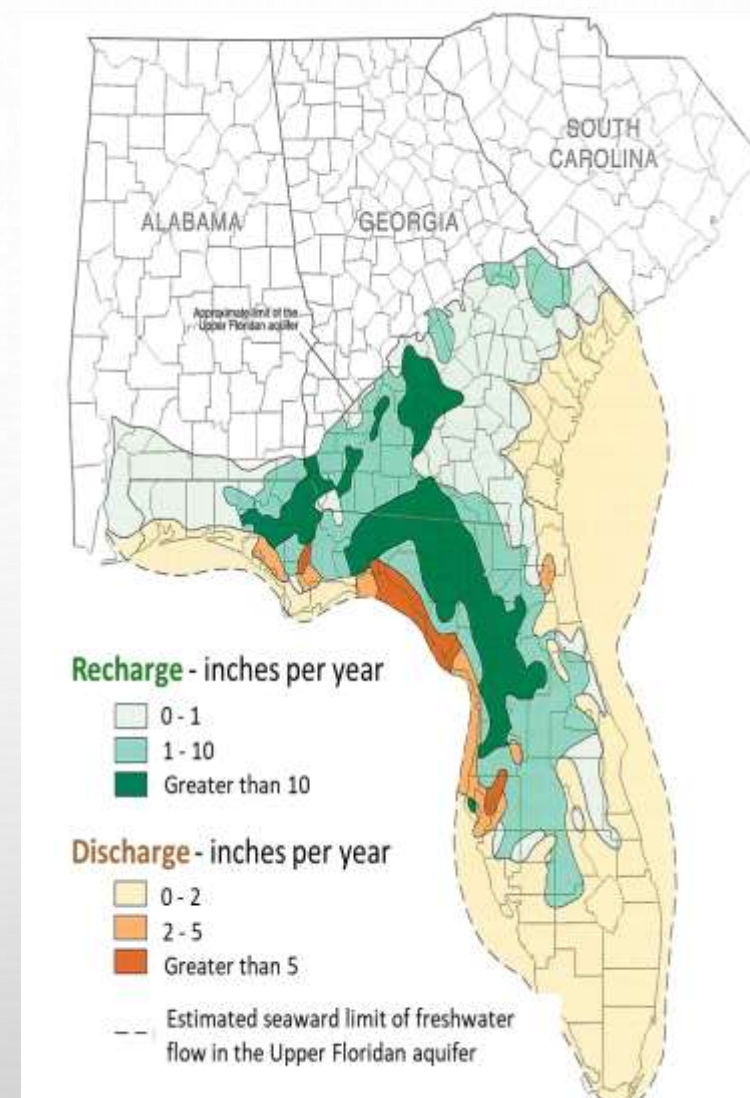


4



FLORIDAN AQUIFER

5



Recharge
Areas

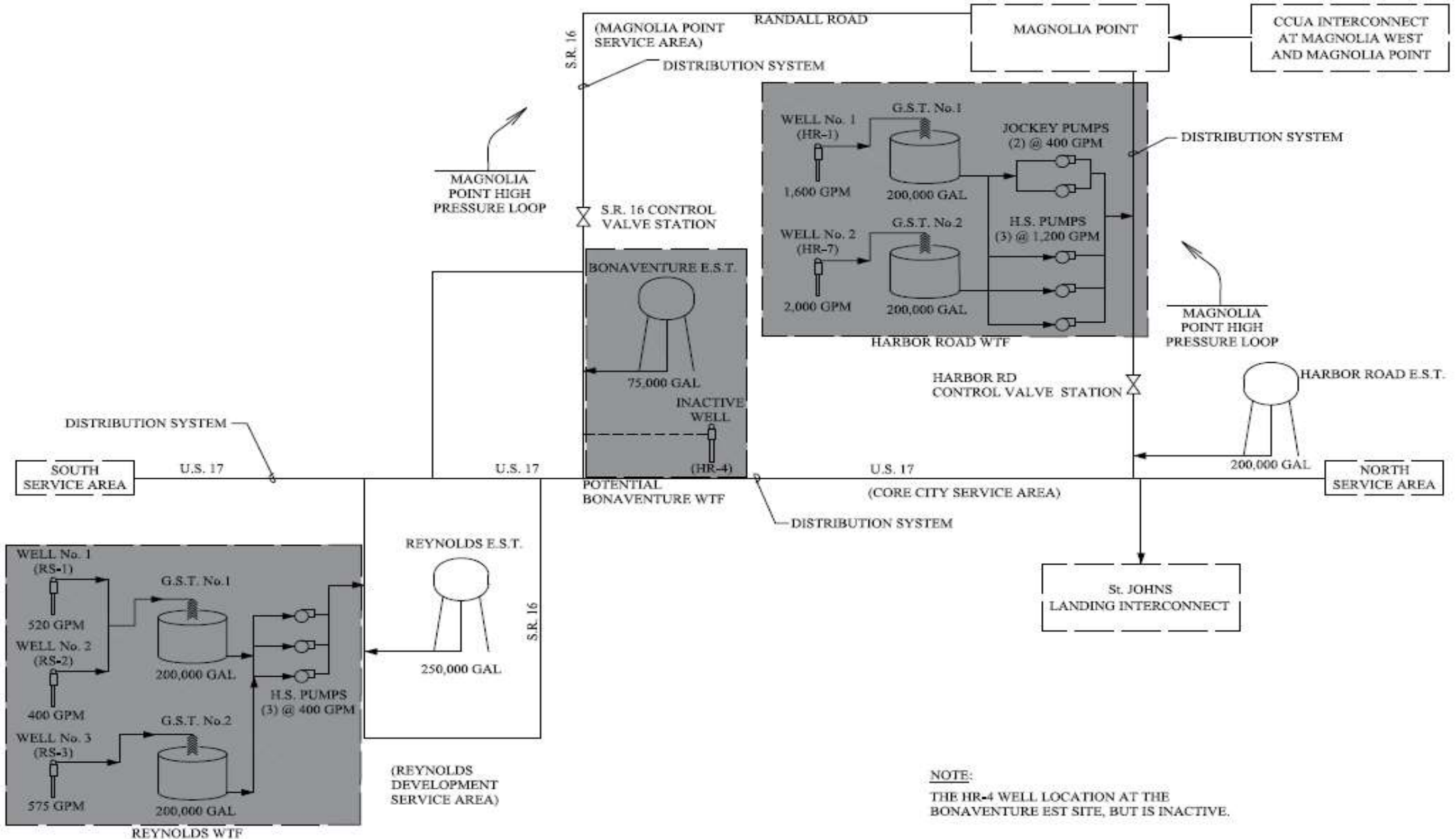


Discharge
Areas

5

GCS COMBINED WATER SYSTEM DIAGRAM

6



CUSTOMER WATER / IRRIGATION CONSUMPTION, 2025⁷

Potable Water Wells – Floridan Aquifer

Harbor Road #1
16", 1148' depth

Harbor Road #2
16", 1080' depth

Reynolds #1
6", 657' depth

Reynolds #2
6", 668' depth

Reynolds #3
6", 654' depth

Water Production Data Calendar Year 2025

Total Water Production:

Total metered potable water delivered = 312,049,000 gallons

Total metered irrigation water delivered = 133,819,781 gallons

Total water produced 2025 = 445,868,781 gallons

43% of water produced is used for irrigation!



CITY OF GREEN COVE CONSERVATION ACTIVITIES

“Hard Items”

- Reclaimed Water Production / Distribution
 - North Grid Reclaimed Water (Edgewater Landing, Black Creek Village)
 - Magnolia Point golf course
- Reducing “in-house” water consumption
 - Water used in water production & wastewater treatment
 - Water system “hardening” (reducing water loss due to aged infrastructure)
 - Water used at City facilities

“Soft Items”

- Outreach and Education
- Water use audits for residential /commercial customers
- Enhanced meter reading technology
- Water conservation rebate programs



CONSUMER CONSERVATION

9

“Hard Items”

- Water Conserving Appliances:
 - Low flow dishwashers, toilets, faucets and showerheads
 - Instant hot water heaters
 - Plant native, drought tolerant, landscaping
 - Minimize grassed areas

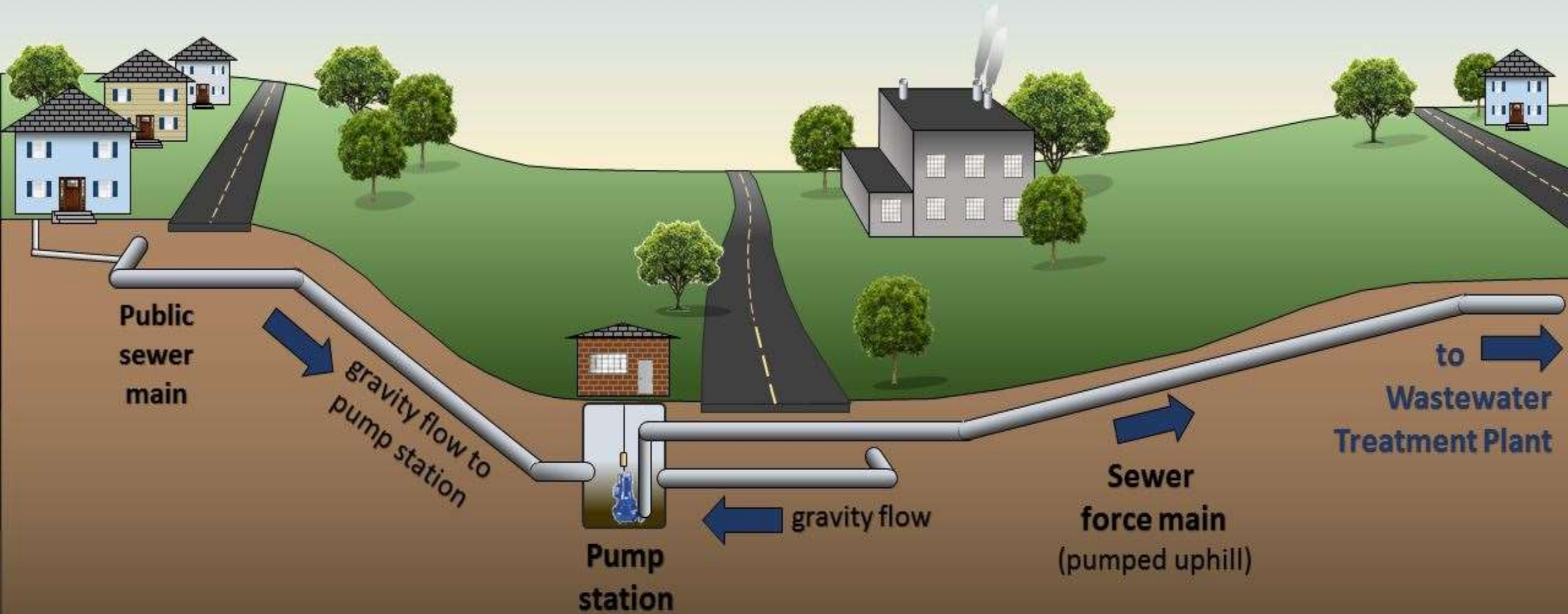


“Soft Items”

- Turn off the water when brushing teeth, shaving, etc.
- Wait until the dishwasher is full before operating
- Avoid overwatering lawn which can promote weeds and insect pests, as well as weaken grass roots
- Replace broken or misdirected (spray water onto sidewalks or pavement) sprinkler heads
- Utilize rain sensors or manually cut off irrigation if sufficient rain has fallen
- Water use audits for residential /commercial customers
- Monitor and repair leaky faucets or toilets
- Participate in water conservation rebate programs.



How the Sewer Works



WATER / WASTEWATER / RECLAIMED WATER FACILITIES

11

Harbor Road WRF

1.250 MGD

0.550 AADF

South WWTF

0.350 MGD

0.288 AADF

Harbor Road WTP

2.30 MGD

0.779 AADF

Reynolds WTP

1.78 MGD

0.597 AADF

All wastewater treatment being combined at Harbor Road to support SB 64. Four phases

- Phase IA – North Grid Reclaimed Water Main. \$1 Million. \$333,000 Grant. \$666,000 city funds
- Phase IB -- Master Lift Stations 2 & 4 Rehab, RW Storage & Pumping System. \$6 Million. \$4.5 Million grant. \$1.5 Million city funds
- Phase II – New 1.25 MGD AWWTF, Equipment Warehouse. \$15 Million. \$6 Million grant. \$9 Million city funds (loan)
- Phase III – Force Main LS# 2 to HRWRF, Decommission South Plant, 1.25 MG RW Storage Tank. \$8.4 Million. \$7 Million Grant



South WWTF/WRF



Reynolds WTP

HARBOR ROAD WATER RECLAMATION FACILITY

12



13

**EXISTING STRUCTURE/
BUILDING (TO REMAIN)**

PHASE I: CONSTRUCTION (CURRENT)

PHASE 0 CONSTRUCTION

 PHASE II CONSTRUCTION

PHASE DE CONSTRUCTION

RECLAIMED WATER SYSTEM

14

BENEFITS OF RECLAIMED WATER

- Reduces use of potable water for irrigation
- Reduces / Eliminates discharge of nutrients to surface waters
- Reclaimed water has some nutrients (fertilizer) already in it

SENATE BILL 64 “SURFACE WATER DISCHARGE ELIMINATION ACT”

The bill requires domestic wastewater utilities that dispose of effluent, reclaimed water, or reuse water by surface water discharge to:

- Submit a plan to the Department of Environmental Protection (DEP) to eliminate nonbeneficial surface water discharges by November 1, 2021
- Fully implement the plan to eliminate discharges by January 1, 2032

METHODS TO COMPLY WITH SB# 64

- Rapid Infiltration Basins
- Deep Well Injection
- Constructed Wetlands
- Sprayfields
- Reclaimed Water

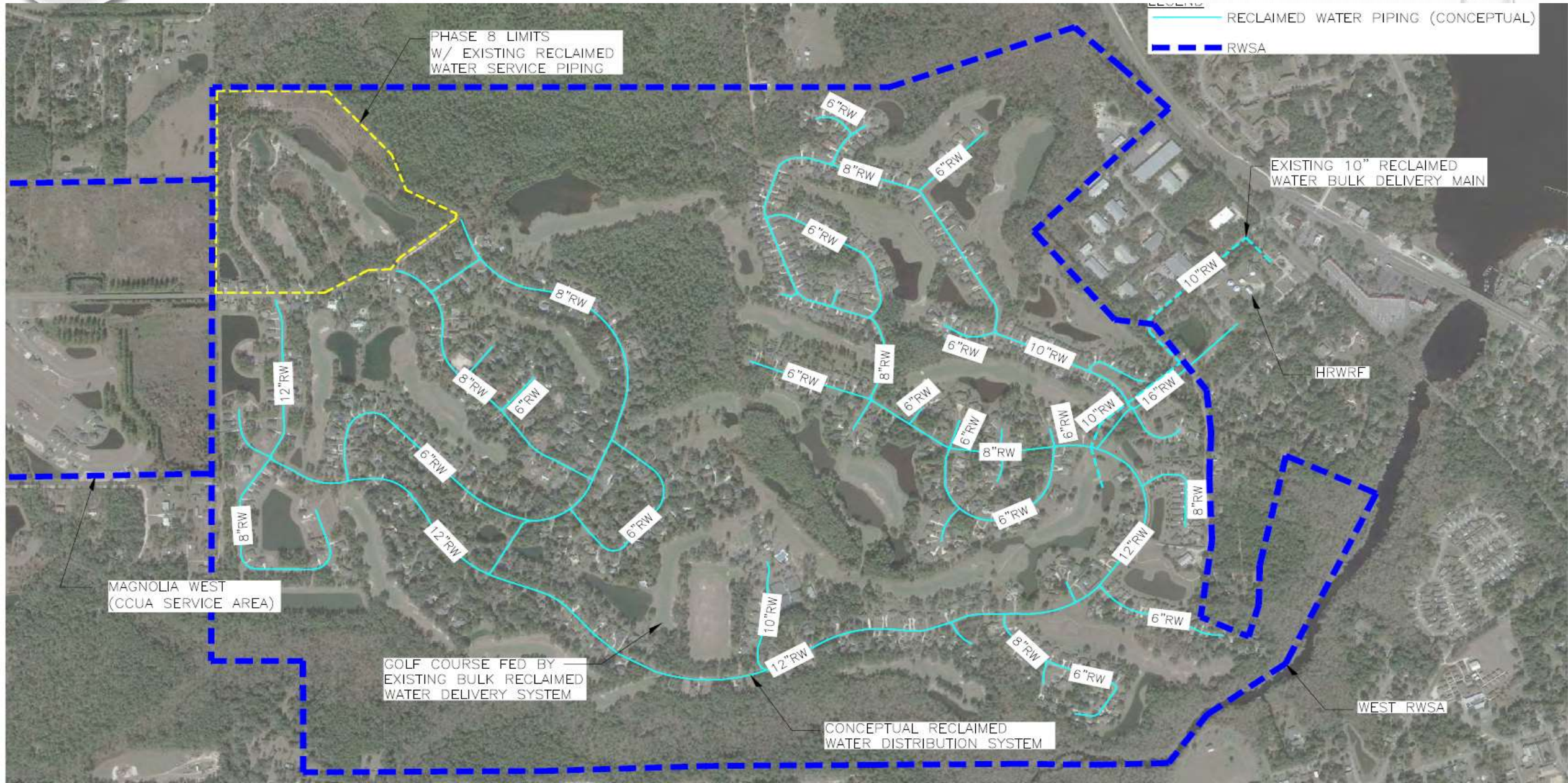
Annual Average Daily Reclaimed Water Flows 2025

- **To Reclaimed Water: 422,000 gallons per day**
- **To Surface Waters: 120,000 gallons per day**

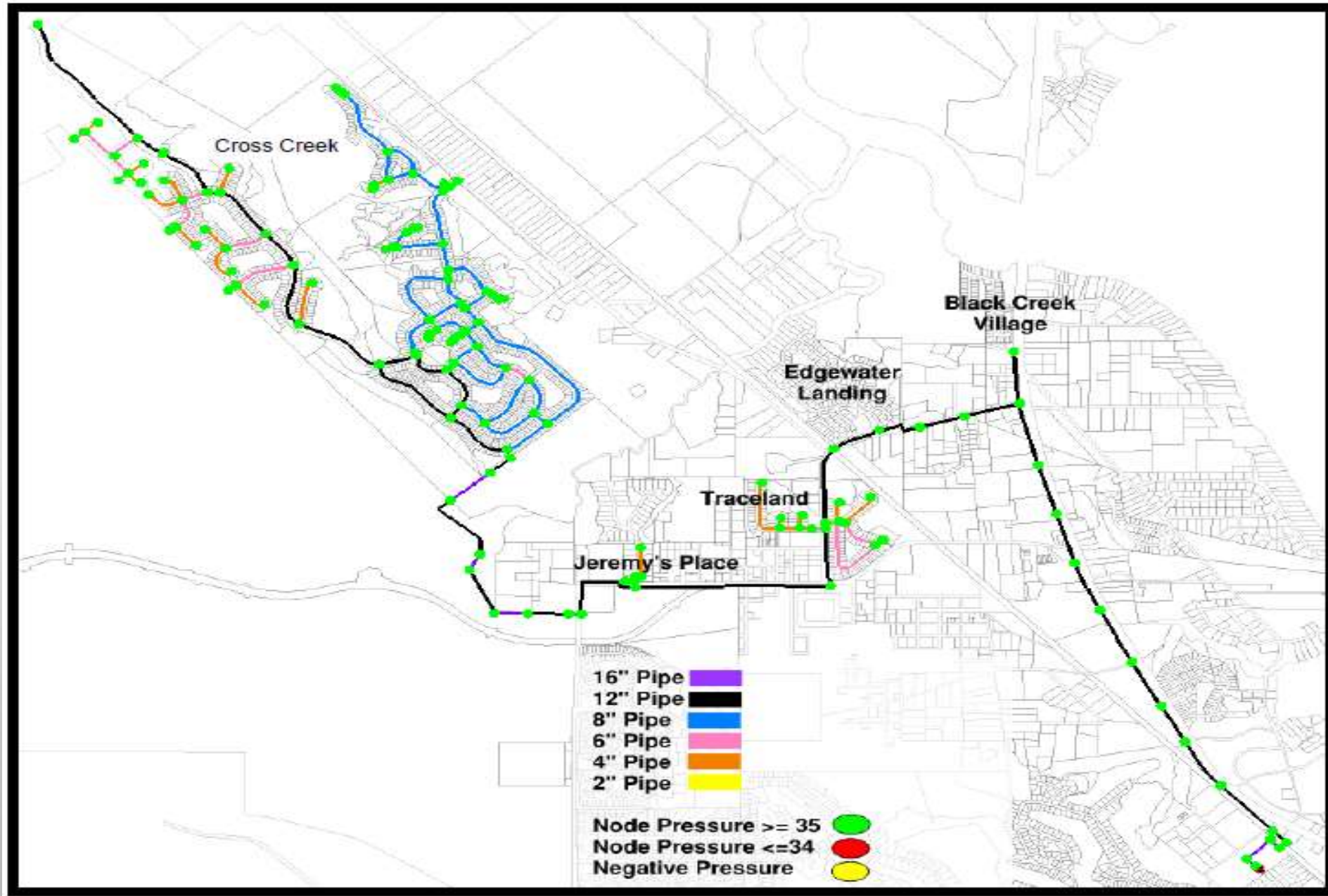


MAGNOLIA POINT RECLAIMED WATER PROJECT

15



CLAY COUNTY UTILITY AUTHORITY RECLAIMED WATER INTERCONNECT



FUTURE ACTIVITIES

- Continue to “Harden” Water, Sewer & Reclaimed Water Systems
- Compliance with SB-64, “Surface Water Discharge Elimination Act”
- Reynolds Park Development Planning
- “Forever Chemicals”
- Declining Capacity and Water Quality in Aquifer
- Funding Facility Expansion and Minimizing Impact to Customers



QUESTIONS AND COMMENTS



SCOTT SCHULTZ
WATER UTILITIES DIRECTOR
sschultz@greencovesprings.com
(904) 297-7063



JASON SHEPLER
VICE-PRESIDENT, NORTH FLORIDA INFRASTRUCTURE
[CPH CORPORATION \(formerly Mittauer & Associates\)](mailto:jason.shepler@cphcorporation.com)
jason.shepler@cphcorporation.com
(904) 644-0644

