






LEGEND

-  AREAS WHERE NEW CONCRETE CONSTRUCTION IS TO OCCUR
-  AREAS WHERE NEW ASPHALT CONSTRUCTION IS TO OCCUR
-  PROPERTY BOUNDARY
-  SOLID ARROWS ARE FOR DIRECTIONAL PURPOSES ONLY NOT FOR PAVEMENT MARKINGS
-  NUMBER OF STANDARD PARKING SPACES

NOTE: FOR ADA PARKING AND SIDEWALK DETAILS SEE MISC. DETAILS

SITE DATA

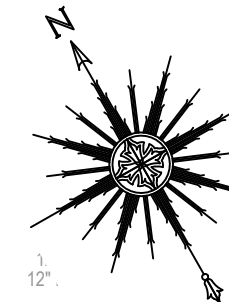
- TOTAL AREA = 2.79 AC
- IMPERVIOUS AREA (EXISTING) = 1.00 AC
- IMPERVIOUS AREA (PROPOSED) = 0.78 AC
- PERVIOUS AREA = 1.20 AC
- WETLANDS AREA (PONDS) = 0.12 AC
- PROJECT AREA = 1.10 AC
- IMPERVIOUS AREA (EXISTING) = 0.20 AC
- IMPERVIOUS AREA (PROPOSED) = 0.78 AC
- PERVIOUS AREA = 0.33 AC
- WETLANDS AREA (PONDS) = 0.12 AC

SEWAGE MANHOLE
RIM EL.=17.84'
BOTTOM EL.=8.60'
12" R.C.P. (W) INV.=9.54'
12" R.C.P. (E) INV.=9.54'

| SITE INFORMATION | DESIGNED | EXISTING | PROPOSED | REQUIRED |
|-------------------------|---------------|-------------------|---------------|-----------------|
| STANDARD PARKING SPACES | 102 | 29 PAVED 11 UNPVD | 62 | 100* |
| ADA PARKING SPACES | 3 ADA + 1 VAN | 2 ADA | 1 ADA + 1 VAN | 3 ADA + 1 VAN** |
| TOTAL PARKING SPACES | 102 + 4 ADA | 40 + 2 ADA | 62 + 2 ADA | 100 + 4 ADA |

- * 300 SEAT SANCTUARY / 3 SEATS PER SPACE (300 / 3) = 100 SP
- ** TOTAL ADA = 4 PER 76-100 STANDARD SP
VAN = 1 PER 1-200 ADA SP

MAX. STUDENT COUNT
1 SPACE / 10 STUDENTS = 1,060 STUDENTS
HOURS OF OPERATION
SCHOOL: MON-FRI 8AM-5PM
CHURCH: SAT-SUN 8AM-9PM



FOUND 4"x4" CONCRETE MONUMENT
11.00'(P)
10.64'(M)

FOUND 5/8" IROD PIPE (WITNESS CORNER)
(12.8')

UNABLE TO FIND OR SET DUE TO OAK TREE & FENCE @ PROPERTY CORNER

S29°49'54"W 244.03'(C)
(11.7')

FOUND 1/2" IROD PIPE (WITNESS CORNER)

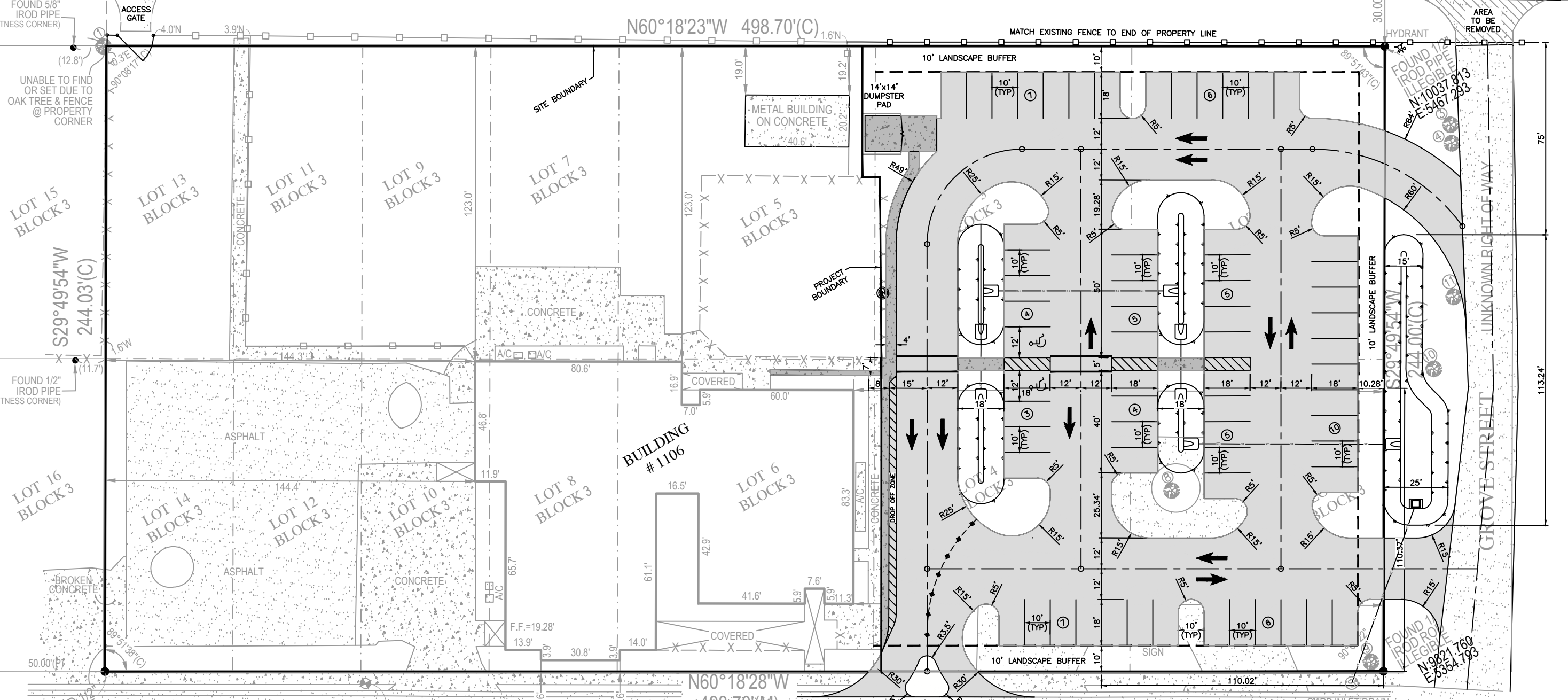
LOT 16 BLOCK 3

BROKEN CONCRETE

FOUND 1/2" IROD PIPE ILLEGIBLE
N:10050 903
E:4917 834

ST. JOHNS AVENUE

APPARENT 60.0' RIGHT OF WAY



SITE BENCHMARK
EL. = 18.63'

N60°18'28"W 498.70'(M)
NORTH ORANGE AVENUE MAGNOLIA AVENUE(P) RIGHT OF WAY UNDETERMINED

CURB INLET DRAIN
STORM MANHOLE
RIM EL.=17.19'
15" R.C.P. (SW) INV.=13.24'
6" R.C.P. (E) INV.=13.85'
6" R.C.P. (W) INV.=15.85'
4" C.P.P. (NW) INV.=14.04'

0 20 40
SCALE: 1" = 20'
SCALE: 1" = 40'

FOR: 11"x17" SHEET

REVISIONS

| NO. | DESCRIPTION |
|-----|-------------|
| | |
| | |
| | |

PLOT DATE:
DRAWN BY:
DESIGNED BY:
CHECKED BY:
SCALE:
JOB NO.:

Date: 6/20/24 Time: 1:38 PM DWG Name: \\TE-605\01-Projects\24-671 Springs Academy Parking Lot_GCS_Pop\03-CADD\24-671 MASTER PLAN.dwg Layout: CONCEPT

All documents and materials supplementing the signed and sealed documents are resources provided for clarification purposes only and do not supersede the signed and sealed documents. Engineer is not responsible for any deviations from the signed and sealed documents.