

NOTE: A CERTIFIED ISA ARBORIST SHALL INSPECT AND REPORT ON EXISTING TREES TO REMAIN PURSUANT TO REQUIREMENT #2 UNDER TREE PRESERVATION ORDINANCE.

GREEN COVE SPRINGS TREE MITIGATION / PRESERVATION

TREE REMOVAL

Species	DBH	
	Live Oak	Other
Laurel Oak	10	10
Laurel Oak	12	12
Laurel Oak	21	21
Laurel Oak	12	12
Laurel Oak	14	14
Laurel Oak	12	12
Laurel Oak	12	12
Laurel Oak	16	16
Laurel Oak	14	14
Laurel Oak	13	13
Laurel Oak	14	14
Laurel Oak	14	14
Laurel Oak	14	14
Laurel Oak	22	22
Laurel Oak	12	12
Laurel Oak	23	23
Laurel Oak	42	42
Laurel Oak	15	15
Laurel Oak	18	18
Laurel Oak	12	12
Laurel Oak	30	30
Laurel Oak	13	13
Laurel Oak	17	17
Laurel Oak	12	12
Laurel Oak	14	14
Laurel Oak	21	21
Laurel Oak	14	14
Laurel Oak	16	16
Laurel Oak	14	14
Laurel Oak	13	13
Laurel Oak	16	16
Laurel Oak	30	30
Tupelo	12	12
Laurel Oak	20	20
Laurel Oak	19	19
Laurel Oak	36	36
Laurel Oak	16	16
Laurel Oak	13	13
Laurel Oak	13	13
Laurel Oak	25	25
Laurel Oak	32	32
Laurel Oak	12	12
Laurel Oak	15	15
Water Oak	21	21
Laurel Oak	16	16
Laurel Oak	15	15
Live Oak	24	24
Laurel Oak	15	15
Palm	17	17
Laurel Oak	22	22
Palm	18	18
Magnolia	45	45
Laurel Oak	22	22
Magnolia	34	34
Live Oak	15	15
Laurel Oak	13	13
Laurel Oak	15	15
Laurel Oak	25	25
Laurel Oak	12	12
Laurel Oak	15	15
Laurel Oak	16	16
Laurel Oak	20	20
Laurel Oak	14	14
Laurel Oak	29	29
Laurel Oak	16	16
Laurel Oak	23	23
Laurel Oak	24	24
Laurel Oak	23	23
TOTALS	24	1247

Live Oak Mitigation @ 1:1: 24
 Other Mitigation @ 1:3: 416
TOTAL MITIGATION 440

PRESERVED TREES

Species	12"-18"		19"-30"		>30"	
	Live Oak	Others	Live Oak	Others	Live Oak	Others
Laurel Oak					36	43
Live Oak						57
Laurel Oak						
Laurel Oak						
Palm	15					
Live Oak	12					
TOTALS	12	27	0	0	36	100

Live Oak Credit: 12
 Others Credit: 13.5
TOTAL 25.5

NET MITIGATION (Mitigation - Credits): 260.5

PLANTED TREES

Tree	Qty.	Caliper	Total *
Dahoon Holly	4	2	8
Eagleston Holly	28	3	84
Live Oak	19	5	95
Cabbage Palm	7	12	84
TOTAL PLANTING:			271

MITIGATION REQUIREMENT IS SATISFIED THROUGH PLANTING

REVISIONS

NO.	DATE	DESCRIPTION
1	1/6/22	TREE REMOVAL
2	5/26/22	CITY REVIEW
3	8/3/22	CITY REVIEW

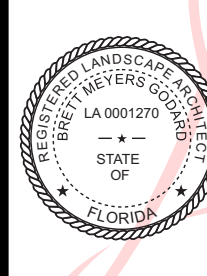
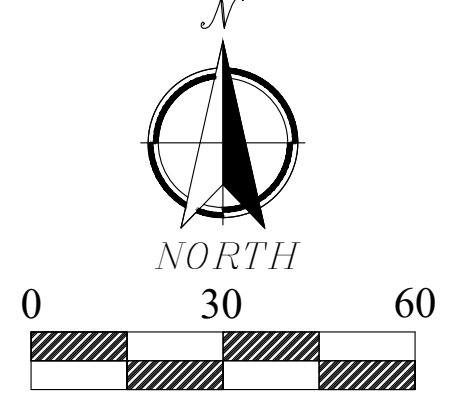
DOMINION ENGINEERING GROUP, INC.
 PLANNERS AND ENGINEERS
 4348 SOUTHPOINT BLVD., SUITE 204, JACKSONVILLE, FLORIDA 32216
 TEL: 904-854-4500 C.A. NUMBER: 26821 www.dom-eng.com

GODARD DESIGN
 LANDSCAPE ARCHITECTURE / LAND PLANNING
 541 Oleander Street, Neptune Beach, FL
 Phone: (904) 247-7729 Fax: (904) 370-9177
 www.godarddesign.com LG 0000397

GRAYLON OAKS
 FOR
GRAYLON OAKS LAND TRUST
TREE REMOVAL/PRESERVATION PLAN

Drawn by: BMG
 Designed by: BMG
 Checked by: BMG
 Scale: AS NOTED
 Job No.:
 © LATEST DATE HEREON
 SHEET NO.

Digitally signed by
Brett M Godard
 Date: 2022.08.03
 09:55:18
 -04'00'



PLANT SCHEDULE

TREES	BOTANICAL / COMMON NAME	CONT	CAL	QTY	REMARKS
IC	Ilex cassine / Dahoon Holly	45-Gallon		4	Min. 8'-10" ht. x 3'-4" sprd., 2" DBH
IOE	Ilex opaca 'Eagleston' / Eagleston Holly	65-Gal.	2.5" DBH	28	Min. 11' - 13' ht. x 3'-4" sprd., 3" CT, 2.5" DBH
QV	Quercus virginiana / Southern Live Oak	-	5"-Cal.	19	Min. 17' - 20' ht. x 8'-10" sprd.
SP15	Sabal palmetto / Cabbage Palmetto	15' CT		7	Shaved trunk, regen.
SHRUBS	BOTANICAL / COMMON NAME	CONT	SPACING	QTY	
VOW	Viburnum obovatum 'Withlacooche' / Withlacooche Walter's Viburnum	7-Gallon	48" o.c.	76	Min. 36" ht. x 24" sprd.

GENERAL NOTES:

- ALL PLANT MATERIAL SHALL BE FLORIDA NO. 1 OR BETTER.
- ALL SUBSTITUTIONS SHALL BE APPROVED BY THE OWNER OR THE LANDSCAPE ARCHITECT.
- MULCH ALL BEDS WITH MIN. 3" SHREDDED CYPRESS MULCH. PULL AWAY FROM SHRUB & TREE STEMS.
- WHERE NUMBERS ON PLANTING PLAN AND PLANT SCHEDULE DIFFER, THE PLANTING PLAN SHALL TAKE PRECEDENCE.
- WHERE SIZES INDICATED DO NOT MATCH CONTAINER SIZE, THE LARGER OF THE TWO SPECIFICATIONS SHALL BE USED.
- SOD ALL DISTURBED AREAS ON THE PROJECT SITE NOT OTHERWISE LANDSCAPED WITH ARGENTINE BAHIA SOD.
- INSTALL ROOT BARRIER PER DETAIL AT RIGHT FOR ALL TREES INDICATED WITH SHADED DOT TO INDICATE 5' OR LESS SEPARATION FROM R.O.W. OR UTILITIES.
- ALL NEW LANDSCAPING WILL BE PROVIDED BY AN AUTOMATIC UNDERGROUND IRRIGATION SYSTEM SUPPLIED BY A DEDICATED IRRIGATION METER.
- STREET TREES SHALL BE PLANTED AT THE TIME THE LOT ON WHICH THEY ARE PLACED ARE DEVELOPED.

GENERAL NOTES

- It is expected that appropriate substitutions of plant material with the intent to improve the quality and appearance of the project relative to the availability of material and freeze considerations meet with the approval of the Landscape Architect.
- All sod areas shall be verified on plan and on site.
- It is the responsibility of the Landscape Contractor to follow all guidelines set forth from the Landscape Specifications when provided. All plant materials shall be Florida #1 or better (Florida Fancy) as described in "Grades and Standards for Nursery Plants".
- All specimen trees must meet the specifications provided in the plant schedule and plans. Any substitutions for Specimen Trees must meet with the approval of the Landscape Architect.
- Contact the Landscape Architect for any major site changes which alter landscape beds or berming areas.

EARTHWORK

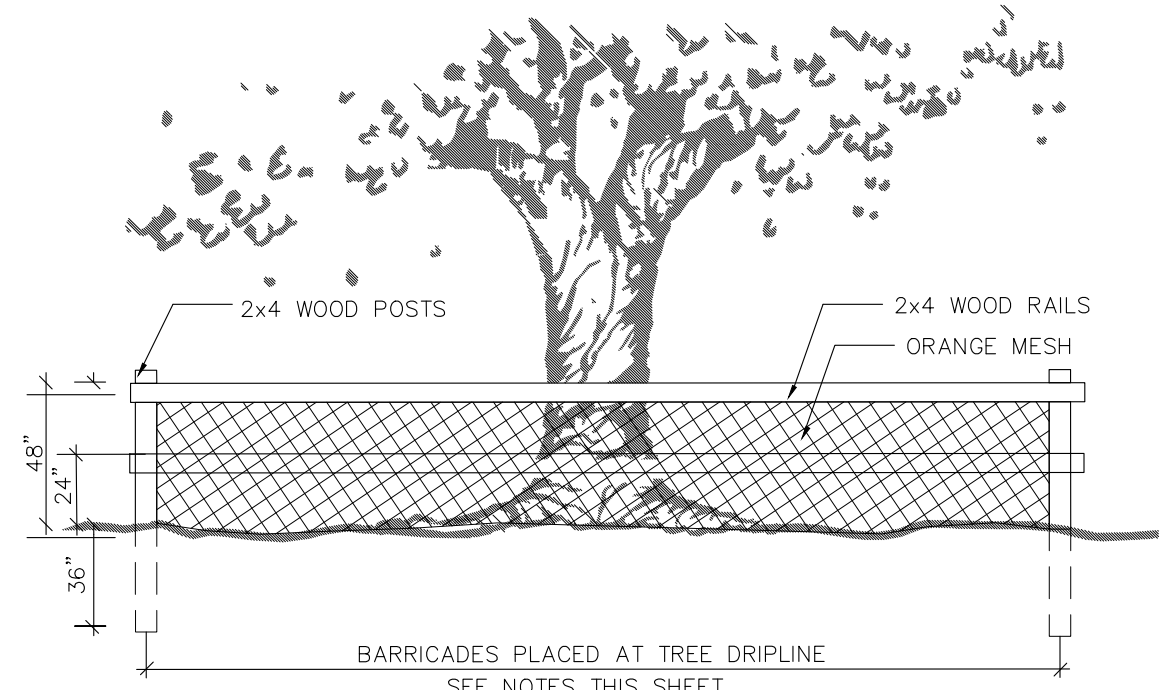
- All site work for rough grading of berms, planters, and planting areas is to be provided by the General Contractor, unless otherwise specified by these plans. Fill for all berms and planters shall be of a suitable, sandy gradation which is porous and percolates well, to insure proper water runoff and drainage. Absolutely no plastic, clayey soil may be used in any planting area.
- The General Contractor shall be responsible for verifying the cubic yard quantities of proposed berms or planter areas.
- The Landscape Contractor is responsible for all final grading of berms, bed areas, and sod areas until acceptable by the Landscape Architect, both before and after landscape installation has begun.
- The Landscape Contractor is to verify soil condition of all planting areas as to pH level and organic stability before planting begins. Recommendations, if any, for improvement to existing soil shall be submitted to Godard Design Assoc. for review and record before installation begins. If soil conditions are found to be unsatisfactory the soil must be amended in accordance with test results and recommendations.
- Any unsuitable material found in landscape beds of berms shall be removed by the General Contractor to a depth of not less than twelve (12) inches and backfilled with said suitable material with reasonable (90%) compaction.
- Any debris, such as wood, concrete, stucco, bricks, etc., shall be removed by the General Contractor and backfilled with suitable material as described in Item

TREE SPADING CONTRACTOR IS RESPONSIBLE FOR:

- Locating and verifying all existing underground utilities in or near proposed tree locations before any trees are placed, and shall coord-inate closely with respective utility contractors involved in those areas.
- Scheduling tree spading operations in any area before sidewalks or other impassable structures are installed.
- Replacing any tree which has died due to improper transplanting, as directed by the Landscape Architect and/or Owner.
- Watering in and fertilizing all spaded trees, as well as amending the surrounding soil, until said trees are established. Established shall mean when tree shows no signs of shock, lack of water, or overall poor health until such time as normal watering as supplied by irrigation system can maintain tree in good health.
- Tree spade contractor shall amend soil in the immediate area of the tree if said soil is not acceptable for transplanting. Notify Landscape Architect in writing of proposed soil amendments.

LANDSCAPE CONTRACTOR IS RESPONSIBLE FOR:

- Watering in and guaranteeing all other trees as per specifications listed on these plans or the written sections.
- Providing mulch, peat, potting soil, and/or fertilizer on site as directed by the plans, specifications, or Landscape Architect.
- Providing positive drainage of all landscaped areas around build-ings, islands, amenities, and other areas negatively affected by poor drainage. This note covers all areas not specified on engineering or landscape grading plans.



TREE PROTECTION BARRICADE DETAIL

SCALE: NT=5

- PROTECT DESIGNATED EXISTING TREES SCHEDULED TO REMAIN AGAINST:
 - UNNECESSARY CUTTING, BREAKING, OR SKINNING OF ROOTS
 - SKINNING AND BRUISING OF BARK
 - SMOTHERING OF TREES BY STOCKPILING CONSTRUCTION OR EXCAVATION MATERIALS WITHIN DRIP-LINE
 - FOOT OR VEHICULAR TRAFFIC
 - PARKING VEHICLES WITHIN DRIP-LINE
- ERECT TEMPORARY WOODEN BARRICADES AS SHOWN ON THIS SHEET, BEFORE COMMENCEMENT OF ANY SITE CLEARING OR GRADING. FENCE TO BE 4' HIGH MINIMUM WITH 2 X 4 POSTS AND 2-2X4 RAILS AT 2' AND 4' ABOVE GRADE AND SHALL BE SET DEEP ENOUGH IN THE GROUND TO BE STABLE WITHOUT ADDITIONAL SUPPORT. ALL FENCING SHOULD BE A MINIMUM CLEAR DISTANCE AS NOTED BELOW:

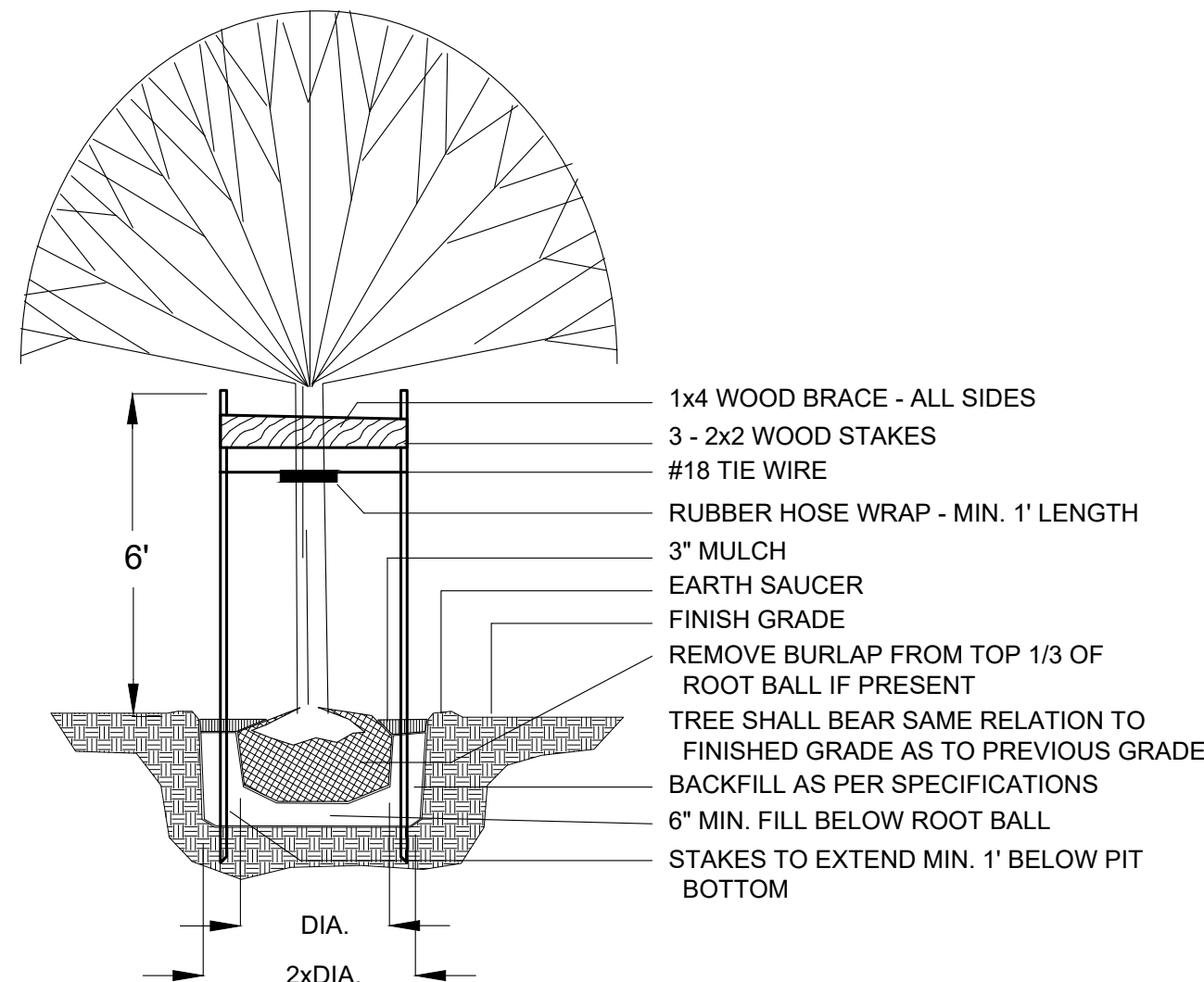
TREES RECEIVING CREDITS FOR COUNTY APPROVAL

The area surrounding a retained tree described by a radius of one foot for each inch of the tree's diameter at breast height shall constitute the minimum undisturbed area required to receive points for that tree. During development activity, encroachment into the undisturbed area for purposes described in paragraph (a) ay be permitted up to twenty-five percent of the radius or up to fifty percent of the radius on one side, but no closer than six feet to the trunk of the protected tree in all events; provided, pavement, including foundation up to a depth of six inches may be permitted within four feet of the trunk of a protected tree.

(a) Permitted Activities Within the Undisturbed Area -A tree encroachment permit is required for all activities in the undisturbed area except the following:

- Tunneled Utility and Irrigation Lines -Utility lines that are tunneled beneath tree roots in order to protect roots, rather than trenched.
- Sodding and Ground Cover -Placement of sod or other ground covers, and the preparation of the ground surface for such covers.
- Pavement -Pavement up to a depth of six inches may be permitted within four feet of the trunk.
- NOTHING SHALL BE PLACED INSIDE OF PROTECTIVE BARRICADES, INCLUDING BUT NOT LIMITED TO CONSTRUCTION MATERIALS, MACHINERY, CHEMICALS, OR TEMPORARY SOIL DEPOSITS, WHEN PAVING, EXCAVATION, OR HARDSCAPE MUST BE DONE WITHIN BARRIERS, BARRIERS SHALL BE MOVED BACK TO A SECONDARY LOCATION AT EDGE OF WORK. EXTRA CARE MUST BE TAKEN AT THIS TIME BY THE CONTRACTOR TO INSURE THAT NO DAMAGE TO THE TREE OCCURS.
- PROVIDE WATER TO TREES AS REQUIRED TO MAINTAIN THEIR HEALTH DURING CONSTRUCTION WORK.
- NO GRADE CHANGES ARE TO BE MADE WITHIN THE BARRICADES WITHOUT PRIOR APPROVAL OF THE COUNTY.
- BARRICADES TO BE PLACED AT ALL TREES AS NOTED IN THE CIVIL AND LANDSCAPE DRAWINGS, WHERE INDICATED BY SYMBOLS DO NOT PLACE IN WETLANDS.
- WHERE SHOWN ON THE CIVIL PLANS, SILT FENCING SHALL SERVE THE SAME PURPOSE AS TREE PROTECTION BARRICADES WITH RESPECT TO TREE PROTECTION AND PRESERVATION. THE SAME RESTRICTIONS AS NOTED ABOVE FOR STORAGE FILL, AND EXCAVATION SHALL BE ADHERED TO.

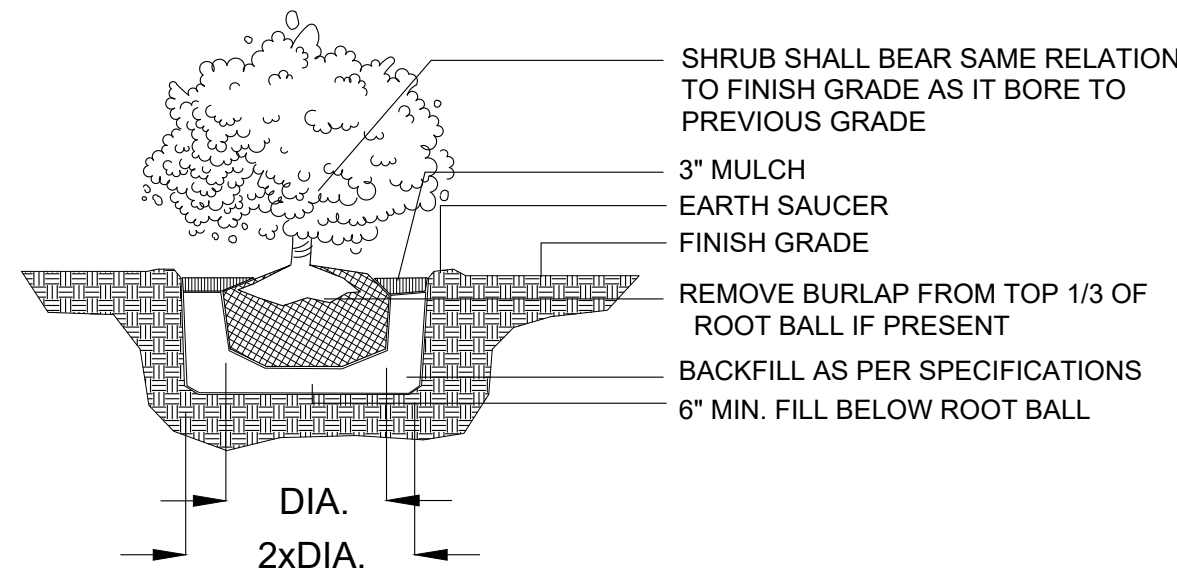
PLANTING DETAILS



TREE STAKING DETAIL

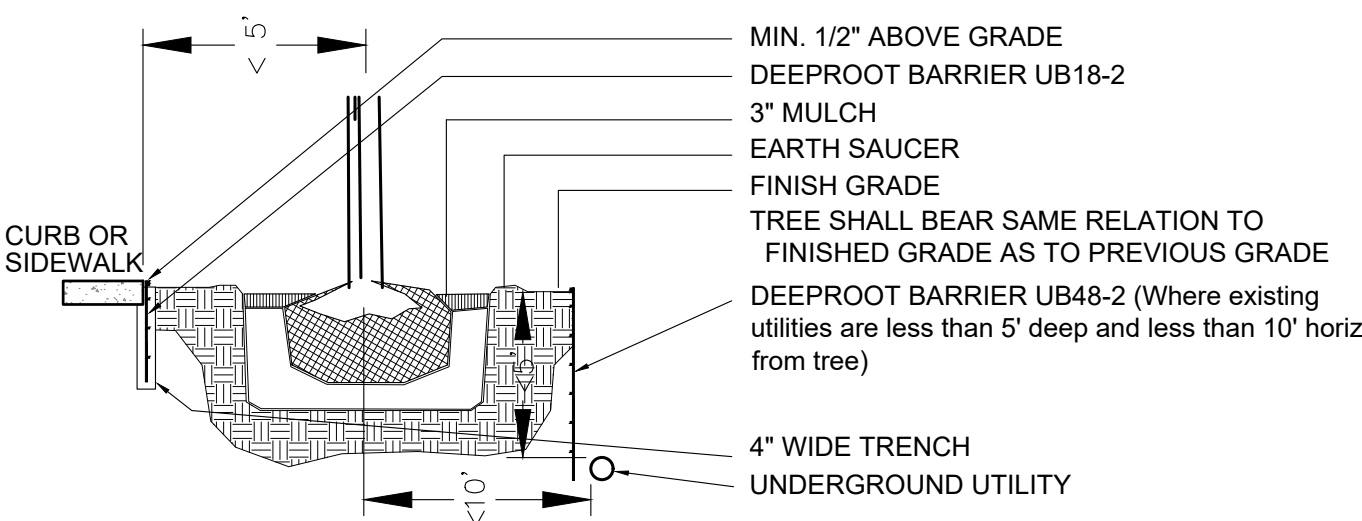
(FOR TREES TO 4" CAL.)

NOT TO SCALE



SHRUB PLANTING DETAIL

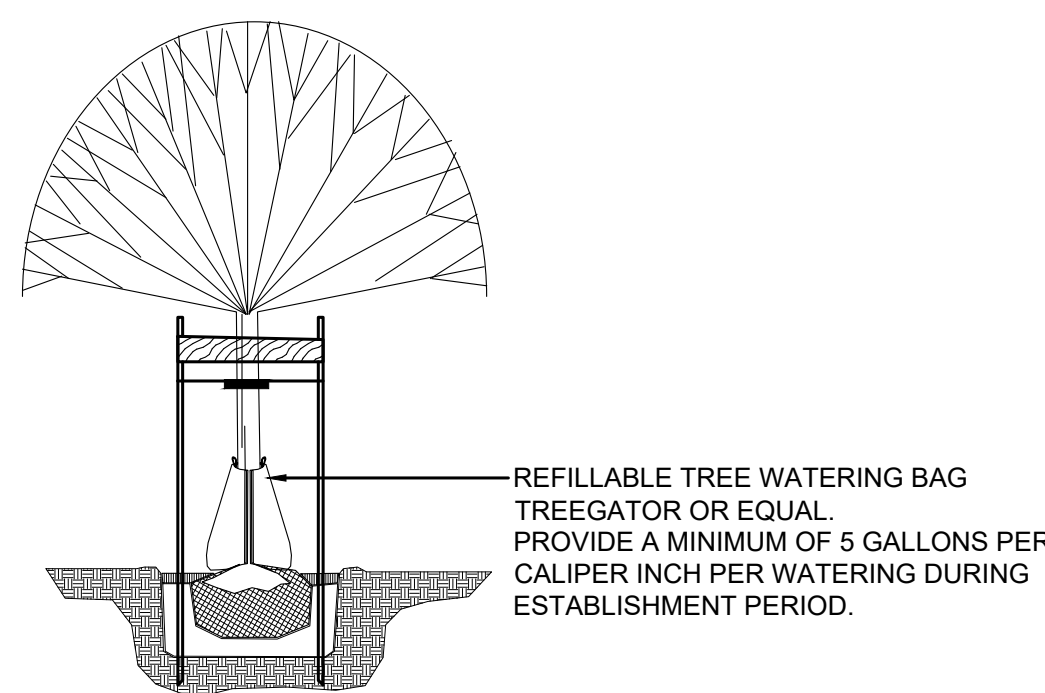
NOT TO SCALE



ROOT BARRIER DETAIL

NOT TO SCALE

Follow manufacturer's installation requirements at www.deepproot.com



TREE WATERING BAG

NOT TO SCALE

DOMINION ENGINEERING GROUP, INC.

PLANNERS AND ENGINEERS

4348 SOUTHPOINT BLVD, SUITE 204, JACKSONVILLE, FLORIDA 32216
 TEL: 904-854-4500 C.A. NUMBER: 26821 www.dom-eng.com
 FAX 904-854-4505



GRAYLON OAKS FOR GRAYLON OAKS LAND TRUST LANDSCAPE GENERAL NOTES

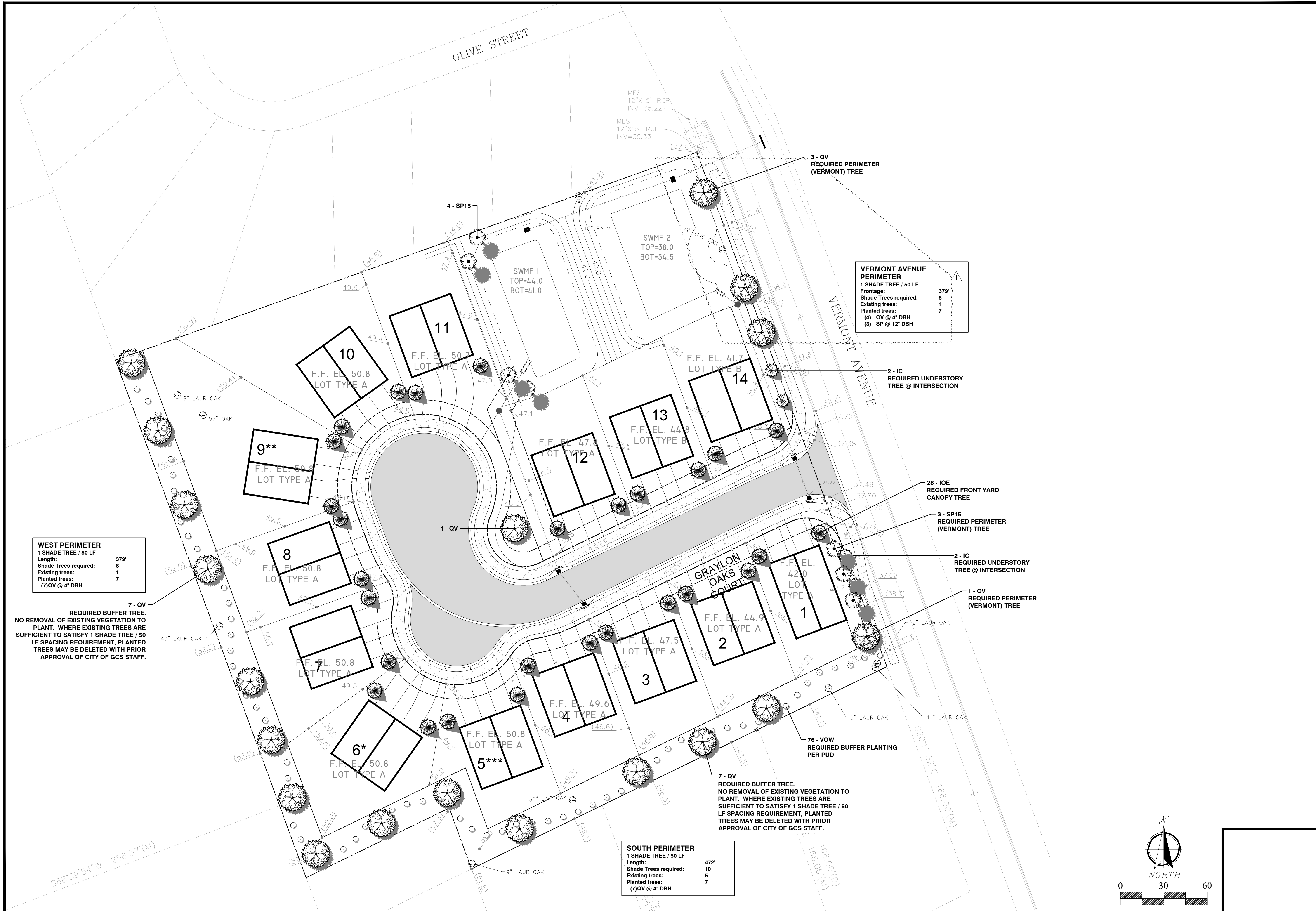
REVISIONS

1	1/6/22	TREE REMOVAL
2	5/26/22	CITY REVIEW
3	8/3/22	CITY REVIEW

PLOT DATE:
 DRAWN BY: BMG
 DESIGNED BY: BMG
 CHECKED BY: BMG
 SCALE: AS NOTED
 JOB NO.:
 © LATEST DATE HEREON SHEET NO.

L2

OF 4



DOMINION ENGINEERING GROUP, INC.
 PLANNERS AND ENGINEERS
 4348 SOUTHPOINT BLVD, SUITE 204, JACKSONVILLE, FLORIDA 32216
 TEL: 904-854-4500 C.A. NUMBER: 26821 www.dom-eng.com
 FAX 904-854-4505

GODARDESIGN
 LANDSCAPE ARCHITECTURE / LAND PLANNING
 541 Oleander Street, Neptune Beach, FL
 Phone: (904) 247-7729 Fax: (904) 370-9177
 www.godardesign.com IC 0000397

GRAYLON OAKS LAND TRUST FOR GRAYLON OAKS LAND TRUST LANDSCAPE PLAN

REVISIONS

1	1/6/22	TREE REMOVAL
2	5/26/22	CITY REVIEW
3	8/3/22	CITY REVIEW

PLOT DATE:
 DRAWN BY: BMG
 DESIGNED BY: BMG
 CHECKED BY: BMG
 SCALE: AS NOTED
 JOB NO.:
 © LATEST DATE HEREON SHEET NO.

