

Steven Tye

08/24/2023

Green Cove Springs Electric Utility-UG Commercial Developments (UCD):

Customer will provide and/or install the following per Green Cove Springs Electric (GCSE) Approved Design and Spec:

- 1) Customer to provide a complete set of final design/service/load plans for new development, for Green Cove Springs Electric to mark up with electric system design to be built by contractor.
- 2) Customer to provide and install 2-4" Schedule 40 PVC conduits for Three Phase Services. Or 2-2" Schedule 40 PVC conduits for Single Phase Services. From the new point of service at New Riser Pole or UG Cabinet, to the new UG Padmount Transformer Pad location as located by Green Cove Springs Electric.
- 3) Customer to provide and install the Three Phase Transformer Pad and Bollards as needed. Customer to install the single-phase pad provided by Green Cove Springs Electric.
- 4) Customer to provide and install all secondary conduit and conductor from new UG transformer to building service.
- 5) If using, only install Meter Pedestal and CT Meter Can. *NOTE: Meter Pedestal and CT Meter Can provided by Green Cove Springs Electric.
- 6) Customer to provide and install the 1" Schedule 40 PVC conduit for the potential wires, from CT Meter Can into transformer secondary side of the pad or CT Enclosure.
- 7) If not, install CT Meter Can, and CT Enclosure on building. *Note: Only CT Meter Can Provided by Green Cove Springs Electric, CT Enclosure provided by customer. All other Meter Cans provided by the customer.
- 8) If using, Customer to install Primary conduit to UG Switch/Fuse/Junction Cabinets Pad/Pit. Customer to install Green Cove Springs Electric provided Pad/Pit as located by Green Cove Springs Electric.
- 9) There is an additional Customer in Aid Charge (CIAC) for the service, amount TBD when we have all the final design/service/load info.

Green Cove Springs Electric will provide and install the following after receiving the CIAC Payment:

- 1) Primary Conductor from New Riser Pole or UG Cabinet to the New UG Transformer Pad location and make up all primary connections. *Note: See #1 and #2 above.
- 2) UG Padmount Transformer and make up all primary connections. *Note: See #3 above.
- 3) Make Up all Secondary Conductors in Transformer. *Note: See #4 above.
- 4) CTs in UG transformer or Customer installed CT Enclosure, CT Meter Can, CT Meter, and CT meter potential wires from CT's to Meter. *NOTE: See #5, #6 and #7 above.
- 5) UG Switch/Fuse Cabinets. Make up all primary connections. *Note: See #8 above.

Thanks,

Steve Tye

Engineering

Green Cove Springs Electric

O: (904)297-7095

C: (904)860-9411





DASHER HURST ARCHITECTS

1022 PARK STREET SUITE 208 JACKSONVILLE FLORIDA 32204 PHONE 904 425 1190

FL LICENSE NUMBER AA2402165 W W DASHHER-HURST.COM

STRUCTURAL ENGINEER G.M. HILL ENGINEERING, INC.

9780 PHIPPS HWY SUITE 101 JACKSONVILLE FL 32256

MEP ENGINEER POWELL & HINKLE ENGINEERING, P.A.

1401 KINGSLEY AVENUE BLDG 12A ORANGE PARK FL 32073

CIVIL ENGINEER GOODSON BERGEN &

1355 CENTRAL PARKWAY SUITE 103 JACKSONVILLE FL 32224

CLAY COUNTY CLAY CO FIRE STATION 20 1305 FL-16, GREEN COVE SPRINGS, FL

REVISIONS

Table with columns: #, DATE, DESCRIPTION

THIS DRAWING IS AN INSTRUMENT OF SERVICE AND IS THE PROPERTY OF DASHER HURST ARCHITECTS, P.A. IT SHALL NOT BE REPRODUCED IN WHOLE OR IN PART WITHOUT THE EXPRESS WRITTEN PERMISSION OF DASHER HURST ARCHITECTS, P.A.



DATE: 11/10/2023

ELECTRICAL SITE PLAN

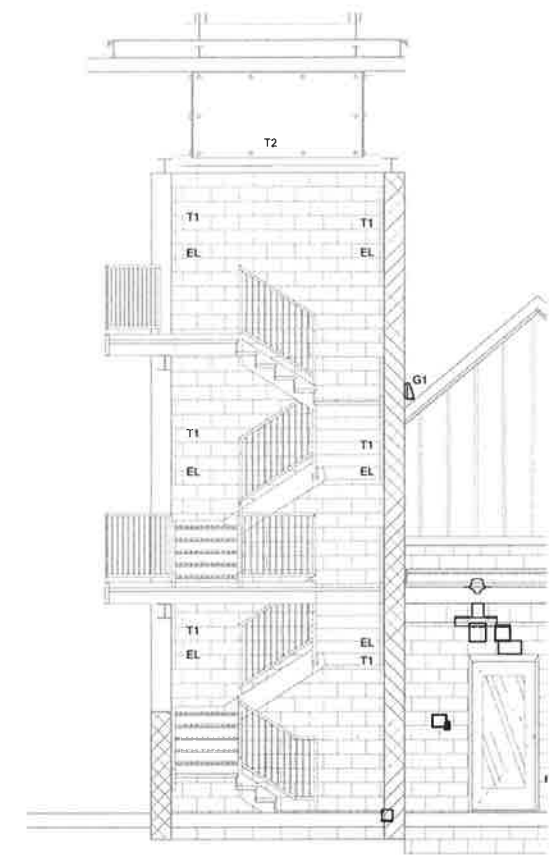
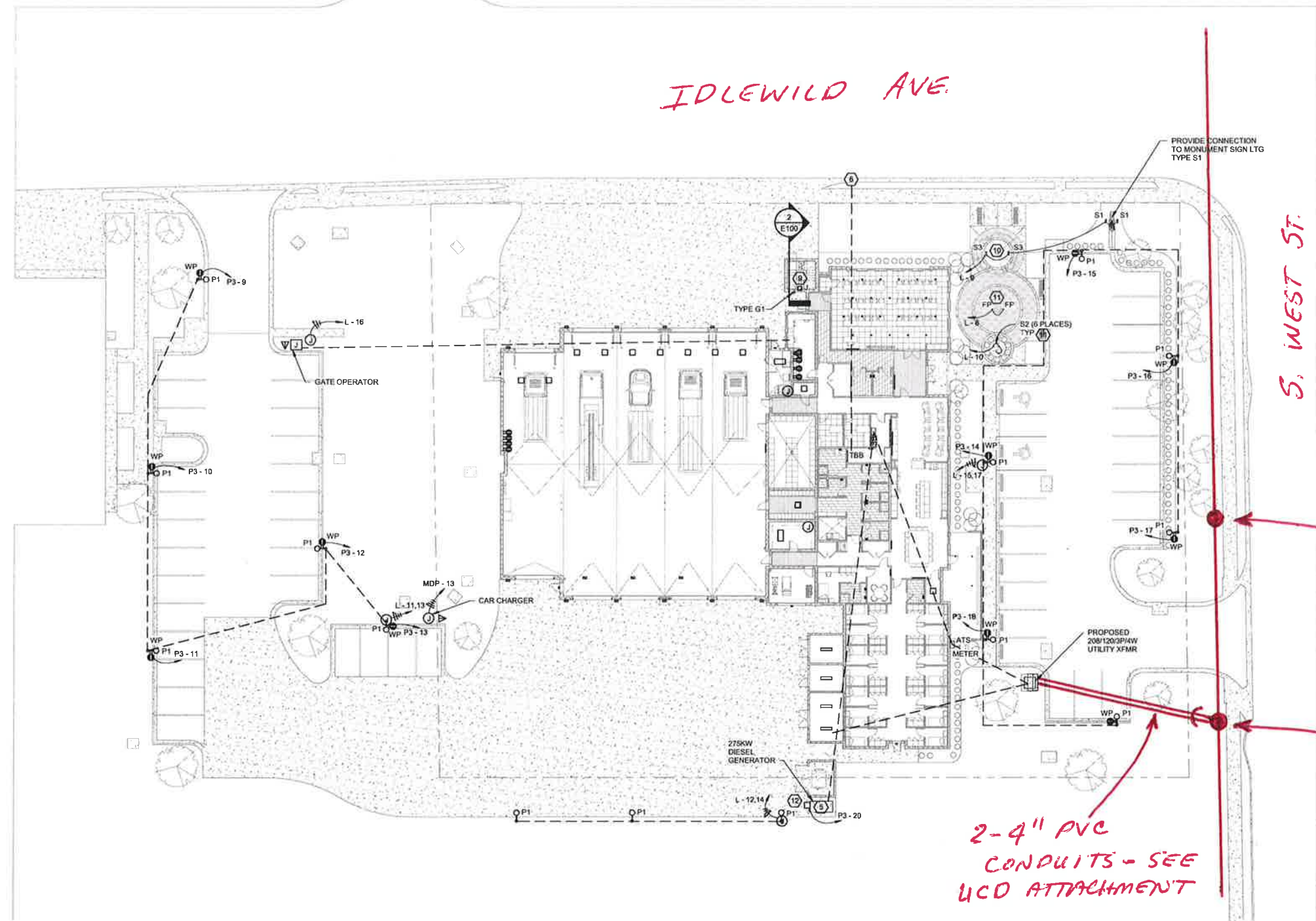
PROJECT NO.: 23002

E100 100% DOCUMENTS

1 ELECTRICAL SITE PLAN 1" = 20'-0"

1 ELECTRICAL SITE PLAN NOTES

- 1. PRIOR TO START OF ANY WORK OBTAIN WRITTEN APPROVAL FOR LOCATION OF POLE/TRANSFORMERS & CONNECTION POINT PER ELECTRIC UTILITY CO DIRECTION. CONTRACTOR SHALL BE RESPONSIBLE FOR OBTAINING AND COMPLYING WITH MOST CURRENT UTILITY RULES AND REGULATIONS. PROVIDE SERVICE ENTRANCE CONDUITS W/36" RADIUS ELLS AT POLE & SERVICE CONNECTION POINT. PROVIDE CONDUITS WITH PULLWIRES AND MAINTAIN 42" MINIMUM DEPTH. LOCATION OF POLE/TRANSFORMERS AND SECONDARY CONDUIT/FEEDER(S) ARE CONTINGENT UPON ELECTRICAL UTILITY CO APPROVAL. PROVIDE GROUND RODS PER ELECTRICAL UTILITY CO REQUIREMENTS. SEE 'POWER RISER' FOR ADDITIONAL REQUIREMENTS. CITY OF GREEN COVE ELECTRICAL DEPARTMENT - 904 XXX-XXXX. 2. PRIOR TO START OF ANY WORK OBTAIN WRITTEN APPROVAL FOR LOCATION OF SERVICE CONDUITS & CONNECTION POINT PER TELEPHONE UTILITY DIRECTION. PROVIDE (2) 2" CONDUITS WITH PULLWIRE TO PROPERTY LINE, STUB UP AND CAP AND MARK 'TELEPHONE'. SEE ALSO 'TELEPHONE BACKBOARD RISER' FOR ADDITIONAL REQUIREMENTS. 3. SERVICE ENTRANCE FROM ELECTRICAL UTILITY CO TRANSFORMER. SEE 'POWER RISER' FOR ADDITIONAL REQUIREMENTS. 4. FIRE PUMP SECONDARY SERVICE. PROVIDE CONNECTION TO FIRE PUMP CONTROLLER. 5. STAND-BY DIESEL GENERATOR WITH PAD. ALL CONDUITS AND WIRING SHALL BE BY ELECTRICAL CONTRACTOR. 6. TO TELECOM PROVIDER PER TELECOM PROVIDER DIRECTION. 7. PROVIDE 1" CONDUIT TO STUB UP INTO WATCH ROOM FROM GATE CONTROLLER. 8. MOUNT FLAGPOLE LIGHTS PER MANUFACTURER'S INSTALLATION INSTRUCTIONS. 9. TIE CIRCUIT TO TYPE T1 AND T2 LIGHTS IN TOWER. SEE ARCHITECTURAL PLANS FOR EXACT LOCATIONS. CIRCUIT SHALL BE PHOTOCELL TIMESWITCH CONTROLLED. 10. MOUNT TREE SPOT LIGHTS PER MANUFACTURER'S INSTALLATION INSTRUCTIONS. 11. MOUNT IN-GRADE LIGHTS PER MANUFACTURER'S INSTALLATION INSTRUCTIONS. 12. PROVIDE MECLUBE 090-5070-07X DIESEL TRANSFER SYSTEM 'CAMI DISPENSER' SYSTEM AT GENERATOR DIESEL BASE TANK. INSTALL, POWER AND GROUND PER MANUFACTURER'S INSTALLATION INSTRUCTIONS.



Section 2 1/4" = 1'-0" EXISTING POLE

EXISTING POLE FOR NEW UG RISER POLE TO FEED NEW UG TRANSFORMER
2-4" PVC CONDUITS - SEE UCD ATTACHMENT

POWELL & HINKLE ENGINEERING, P.A. 1409 KINGSLEY AVENUE, BLDG 12A ORANGE PARK, FLORIDA 32073 (904) 264-5570 FAX (904) 378-2646

ROBERT L. HINKLE	PE 29302
GALTON C. MOK	PE 33192
TANE R. HINKLE	PE 48076
THOMAS M. ELDER	PE 56121
RICHARD A. MATTHEWS	PE 39418
DAVID R. S'PELL JR.	PE 34729
JAMES L. HENNESSEY	PE 83241