

**PATROL AND COMMUNITY AFFIARS / TRAFFIC SECTION  
POLICE MEMORIAL OPERATIONAL PLAN**

**OPS#: 2021-006**      **Police Memorial Day Ceremony – Traffic Section**

**Commence:**            Thursday, 05-06-2021

**End:**                      Thursday, 05-06-2021

**I. Analysis of Problem: Traffic Patterns and Parking**

**Venue:**

Spring Park, Green Cove Springs, Florida

**Back-up Venue:**

Clay County Shrine Club, CR 209 / Russell rd.

**Time of Occurrence:**

0630 through 1200

**Most Common Day of Occurrence:**

Thursday.

**MODUS OPERANDI**

N/A

**II. GOALS AND TYPE OF OPERATION:**

Goals:

Increase the safety of the motoring public and pedestrians, while improving the flow of traffic during the event. Increase effectiveness of traffic flow and parking, by encouraging voluntary compliance from attendees. Identify traffic routes affecting ingress and egress to the event or parking areas, including detour routes, static display parking areas, necessary road closures and ensure personnel know their assigned post assignments. This will be accomplished by use of a specified law enforcement radio channel / frequency (**SO EVT-1**), coordinated and monitored by the CCSO Communications center.

Operation type:

Staged, selective traffic enforcement, utilizing traffic section personnel. Uniformed assets, in marked and unmarked units will be onsite as well as other CCSO component personnel, who are identified in their specific Operational Plans provided to Director D. Barnes. All personnel will enforce all applicable traffic laws affecting safety and traffic patterns.

**III. DATE (S) AND TIME(S) OF OPERATIONS:**

Thursday, 05-06-2021

0630 to 1200 Hours

#### IV. LOGISTICS:

Personnel from the Traffic Section will observe the problem area noted within and around the intersections of the affected road closures. Observed violations will be addressed appropriately.

All sites will be secured at 0700 hours on the day of the event, to minimize unnecessary vehicular traffic prior to and during this operational event. This a scheduled and time sensitive event. Arrival and departure times will be observed.

CCSO Escort / motorcade will have two travel route options to fulfill family and guest arrival at the venue.

Option #1. Use of Hwy 17 from staging to event site.

Option #2. Use of Magnolia Ave. from site (A) via Lemont St. to Spring St

This operation will utilize five different sites to satisfy the parking needs for this event. The attached aerial diagram depicts parking sites which are labeled (A-B-C-D & E). The following legend will describe the use for each site. Sites (D-E) will have a one way traffic flow during the event and will be barricaded and manned to ensure there is no traffic flow during the ceremony, in addition to providing verbal detour instructions to motorist as needed... (This is outlined in site (A) of the legend.)

One way traffic flow in this area will begin at Magnolia Ave. and Springs St. flowing east to St. Johns Ave., then turning south along St. Johns Ave. to Ferris St., then turning West on Ferris St. to Magnolia Ave. departing the event area.

#### Communications:

ECO Manager John Ward, advised Date 03-03-2021.

Dir. A. Eakin, Designed Communications (Real world Operations Plan)

(Should an incident occur, radio channel (MA-FLA) has been established for multi-jurisdictional Use) this will be decided by IC Chief

The Traffic Section Operation Plan, will utilize the (SO EVT-1) radio channel for the event. Portables will be on channel (5)

#### Resources:

CCSO Traffic Section Personnel

CCBCC Road Dept. Signage/Barricades

CCFR: Ladder Truck and EMT personnel

CC Road Dept: Signage/Barricades

Community Affairs: Flyer notifications to residents and businesses

**Times:**

0630 through 1200 hours

**Day:**

Thursday, 05-06-2021                      this is a 'Blue' work day

**Site Legend:**

- A. David White Memorial Building / Clay County Sheriff's Office. Families and guest of our fallen officers will meet at 0900 hours, in the Northeast parking lot (Closed Revels Chrysler Buick) across from the Clay County Sheriff's Office, then be transported under CCSO escort by chauffeured bus to site (E). Chauffeured buses may stage at the curb side on the corner of Spring St. and St. Johns Ave. once all family and guest have been seated. Motor Officers and J. Smith, will act as escort / motorcade personnel picking up families at 0940 hours, from site (A) and escorting them to site (E). The motorcade route will utilize Orange Ave. traveling South bound to Spring St. The escort will turn East on to Spring St. then proceed across Magnolia Ave. where an 'American Flag' shall be draped, hanging from a CCFR ladder truck. The motorcade will stop curb side directly in front of the Spring Park Gazebo side walk. Upon their arrival, they will exit the bus directly in front of the Gazebo and be escorted by awaiting CCSO personnel who will escort them down the side walk to their seating area. If necessary, CCSO escort personnel will proceed back to site (A) traveling South on St. John's Ave. turning West on to Ferris St., then cross over Magnolia Ave. and proceed to Orange Ave. Escort personnel will turn North on to Orange Ave. and proceed to Houston St. turning West and proceed to Palmetto Ave. turning North, then travel to site (A), to begin the process again until such time all families and their guests have arrived at the venue. (This may only require one escort.)
- B. Overflow Parking Site (B), will be supervised by PSA Sgt McCall, and will be utilized once sites (D & E) are full. This is a vacant grass lot, located at the corner of Magnolia Ave. and Palmer St. This site is one block away from the venue, within walking distance. The parking lot is accessible from

Magnolia Ave. Persons utilizing this site should not park in the paved areas adjacent to this area, as those areas are delegated parking for the affected businesses in the area.

- C. Media Vehicle Parking site (C), will be supervised by Deputy Goldsmith. This area has **(13) regular parking spaces and (2) handicap parking spaces**. The spaces are properly marked on the pavement and located at the end of the side walk on Walnut St. Media personnel are welcome to relocate with their camera equipment and set up in the grassy area of site (E). This is the location of the old GCSPD facility. Media questions and media personnel shall be referred to Deputy A. Ford or Laura Shassberger.

The adjacent overflow parking lot, on Walnut St. across from the pavilion can be utilized by attendees This area has **(18) spaces** and is also on site (C). The adjacent parking lot directly next to Ronnie's wings, should not be used by CCSO personnel as this is Ronnie's delegated business parking lot.

- D. Event Parking site (D) supervised by Lt. G. Wood and Sgt. M. Punsky, This area has **(31) regular parking spaces and (2) Handicap spaces**. Site (D) also includes a small parking lot located at the corner of Ferris St. and Magnolia Ave. **This area has (21) regular parking spaces and (2) Handicap spaces**.
- E. Event parking VIP area Site (E), supervised by D/S M. White , **This area has (10) regular parking spaces and (1) handicap parking space**. This area is designated for V.I.P.'S and Command staff. When the spaces are filled, Site (D) will then be utilized if available parking spaces exists. When these spaces are filled, the overflow sites (B-C) will be utilized.

**Special Parking 1:**

Sheriff M. Cook and Under Sheriff R. Lendvay, have reserved parking on Spring St. in the cut -out parking area in front of the flag pole, near the sidewalk entrance to the old GCSPD facility. This location is across from the Spring Park Playground on Spring St. between sites (D-E). **There are (2) regular parking spaces.**

**Special parking 2: Static Displays under the tree canopy**

Special Operations vehicles, supervised by Lt. S. Moreland, will utilize the limited parking area located under the tree canopy adjacent to sites (D-E). **(3) CCSO vehicles, (1) CCFR EMT vehicle, (3) GCSPD vehicles, (1) FHP vehicle and (1) OPPD vehicle**

**Road Closures:**

Magnolia Ave. from Walnut St. to Ferris St.

Walnut St @ St Johns Ave

Orange Ave @ Spring St

**Manned Post:**

Hwy 17 @ Houston St.	1 PSA (Deel)	Closing southbound 17
Hwy 17 @ Gum St.	1 PSA (Johannes)	Closing southbound 17
Hwy 17 @ Center St.	1 PSA (White)	Closing southbound 17
Hwy 17 @ Walnut St.	1 PSA (Bass)	Closing southbound 17
Hwy 17 @ Spring St.	1 PSA (Hall)	Closing southbound 17

V. **RESOURCES TO BE UTILIZED.**

Traffic Section Assets:

<u>Lt. G. Wood, # 805, Sgt Punsky #716</u>	<u>Sites D-E – VIP Parking, Dignitaries, Swat, Honor Guard</u>
<u>PSA Cintron , # 9308</u>	<u>Sites D-E –VIP Parking, Dignitaries, Swat, Honor Guard</u>
<u>PSA Lee , #9309</u>	<u>Sites D-E – Spring St. @ Magnolia Ave. Family entrance, Traffic, Parking and Detours South on Magnolia Ave.</u>
<u>PSA Shook, #9317</u>	<u>Site D-E – Spring St. @ Magnolia Ave. Family entrance, Traffic, Parking and Detours South on Magnolia Ave.</u>
<u>D/S M. Gadt, # 660</u>	<u>Motor Escort, Site A to E &amp; back – Family Pickup &amp; Drop off + Site D-E</u>
<u>D/S C. Hurley, # 651</u>	<u>Motor Escort, Site A to E &amp; back – Family Pick up &amp; Drop off + Site D-E</u>
<u>PSA Dunahugh, #9314</u>	<u>Site D-E – Ferris St. @ Magnolia Ave. Handle traffic, Parking and Detours South on Magnolia Ave.</u>
<u>D/S James, #</u>	<u>Site C1-C2 – Walnut St. @ St. Johns Ave. &amp; Media parking area</u>
<u>PSA Fryer , #9313</u>	<u>Site B – Walnut St. @ Magnolia Ave. – Traffic, over flow parking, Detours. Block Magnolia Ave. @ Walnut St. South bound NO through traffic, Manage Detours North, East or West</u>

**VI. Notifications Made:**

- A. Acting Watch Commander:
- B. Public Safety Telecommunicators / ECO supervisor on duty: Lt. Sarah Lipe
- C. GCSPD: Chief D Asdot
- D. OPPD: Chief G. Goble
- E. JSO: Sheriff M. Williams

**VII. Alternate Site**

- A. In the event the event is unable to be held at the main location, it will be moved to the Clay County Shrine Club, located at 2471 Russell rd.

**LOGISTICS:**

Personnel from the Traffic Section will observe the problem area noted within and around the intersections of the affected roads. Observed violations will be addressed appropriately.

All sites will be secured at 0700 hours on the day of the event, to minimize unnecessary vehicular traffic prior to and during this operational event. This a scheduled and time sensitive event. Arrival and departure times will be observed.

CCSO Escort / motorcade will have one travel route option to fulfill family and guest arrival at the venue.

Families and guest of our fallen officers **will meet at 0900 hours**, in the Northeast parking lot (Closed Revels Chrysler Buick) across from the Clay County Sheriff's Office, then be transported under CCSO escort by chauffeured bus to site.

Route: The families will leave the above listed location and travel north on Hwy 17/ Orange Ave to CR 209. They will turn westbound to Russell Rd and north on Russell Rd to the Clay County Shrine Club, located at 2471 Russell rd. Upon arrival, the Families will stay to the right and the bus will stop at the entrance of the Clay County Shrine Club.

Parking for all visitors will be in the field to the east of the building.

D/S M. White # 8061

\_\_\_\_\_  
**Completed by: Name / ID # 8061**

\_\_\_\_\_  
**Date**

Lt. G. wood, # 805

\_\_\_\_\_  
**Lieutenant: Name / ID#**

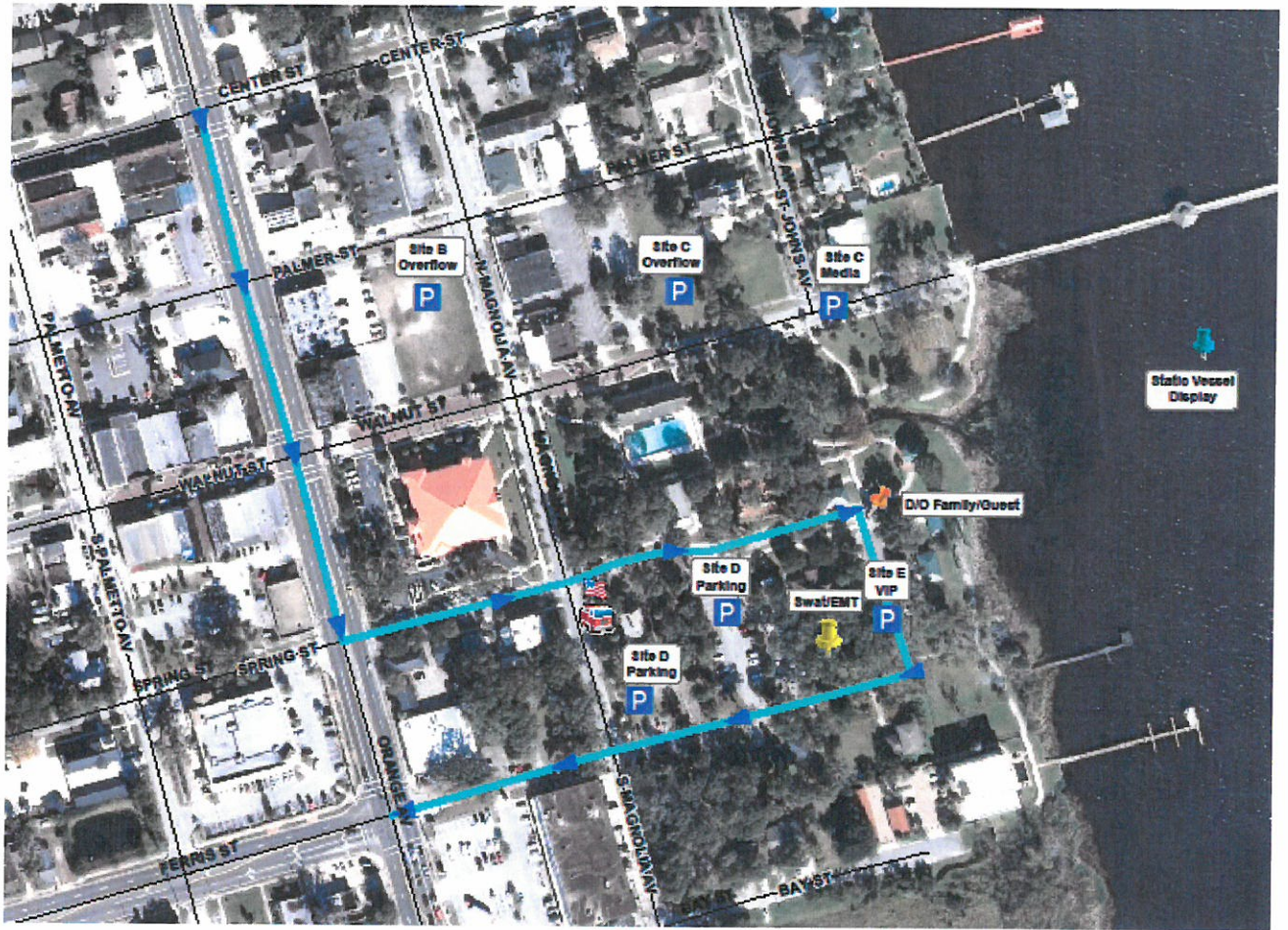
\_\_\_\_\_  
**Date**

Chief Golemme, # SO 10

\_\_\_\_\_  
**Chief: Name / ID #**

\_\_\_\_\_  
**Date**







# Untitled Map

Write a description for your map.



**Legend**

-  Spring Park
-  Tent

Tent 1

Tent 2

Pavillion

80 ft



