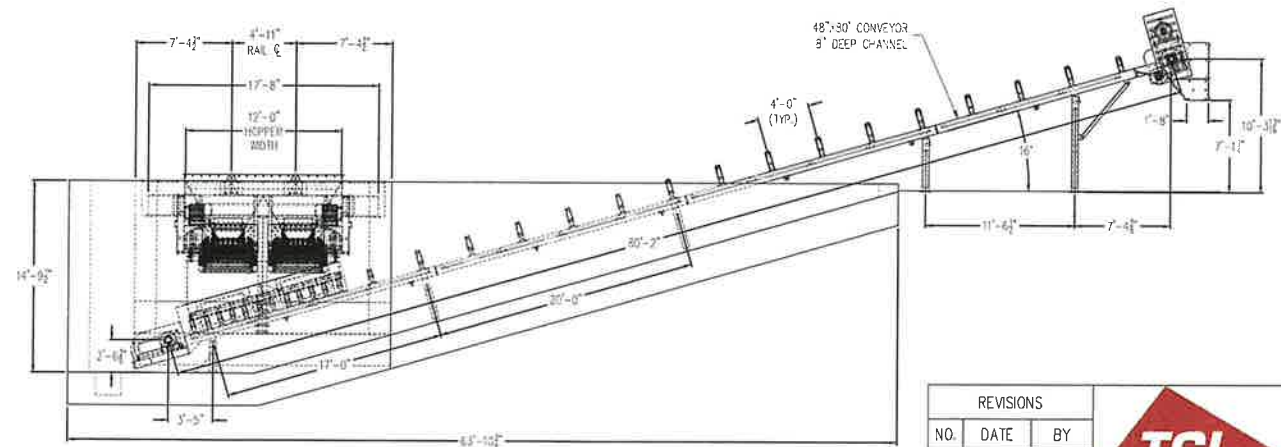

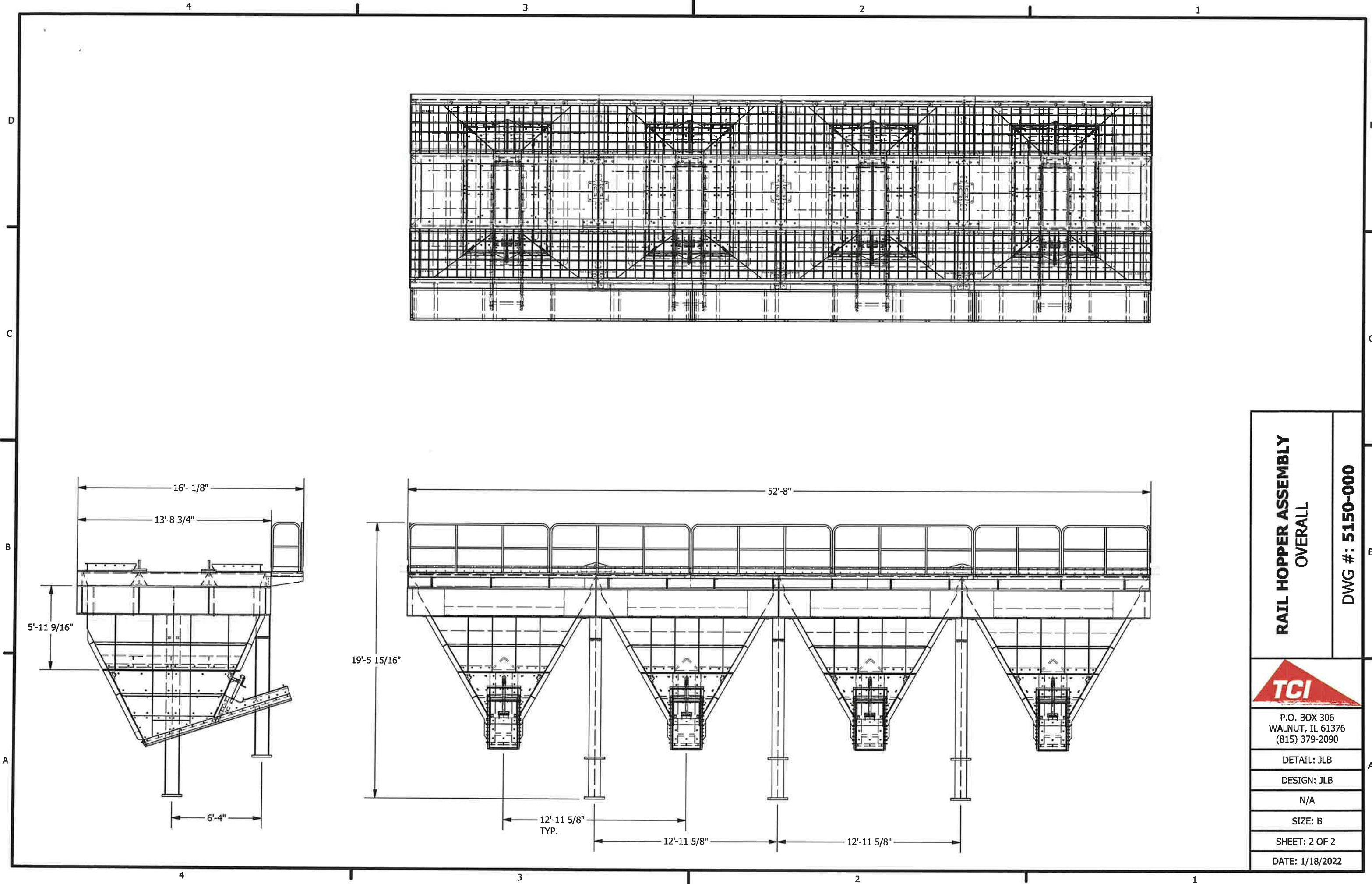


NOTE: GRIZZLY AND HOPPER WILL SHIP
AS ONE LARGE PIECE.
13'-0" X 56'-10"



REVISIONS					TCI MANUFACTURING AND EQUIPMENT SALES, INC. P.O. BOX 306 WALNUT, IL 61376 PHONE: (815) 379-2090 E-MAIL: ENGINEERING@TCIMFG.COM FAX: (815) 379-2690
NO.	DATE	BY			
1					
2					
3					
4					
5			SCALE: 5/32"=1'-0"	TITLE:	HIPOINT AGGREGATE
6			DATE: 05/19/16		KALAMAZOO, MI 12'X40' RAIL PIT HOPPER
7			DRAWN BY: TAW	CHK'D BY:	SHEET 1 OF 1 DWG#: 2907-101-A SIZE D



**RAIL HOPPER ASSEMBLY
OVERALL**

DWG #: **5150-000**



P.O. BOX 306
WALNUT, IL 61376
(815) 379-2090

DETAIL: JLB

DESIGN: JLB

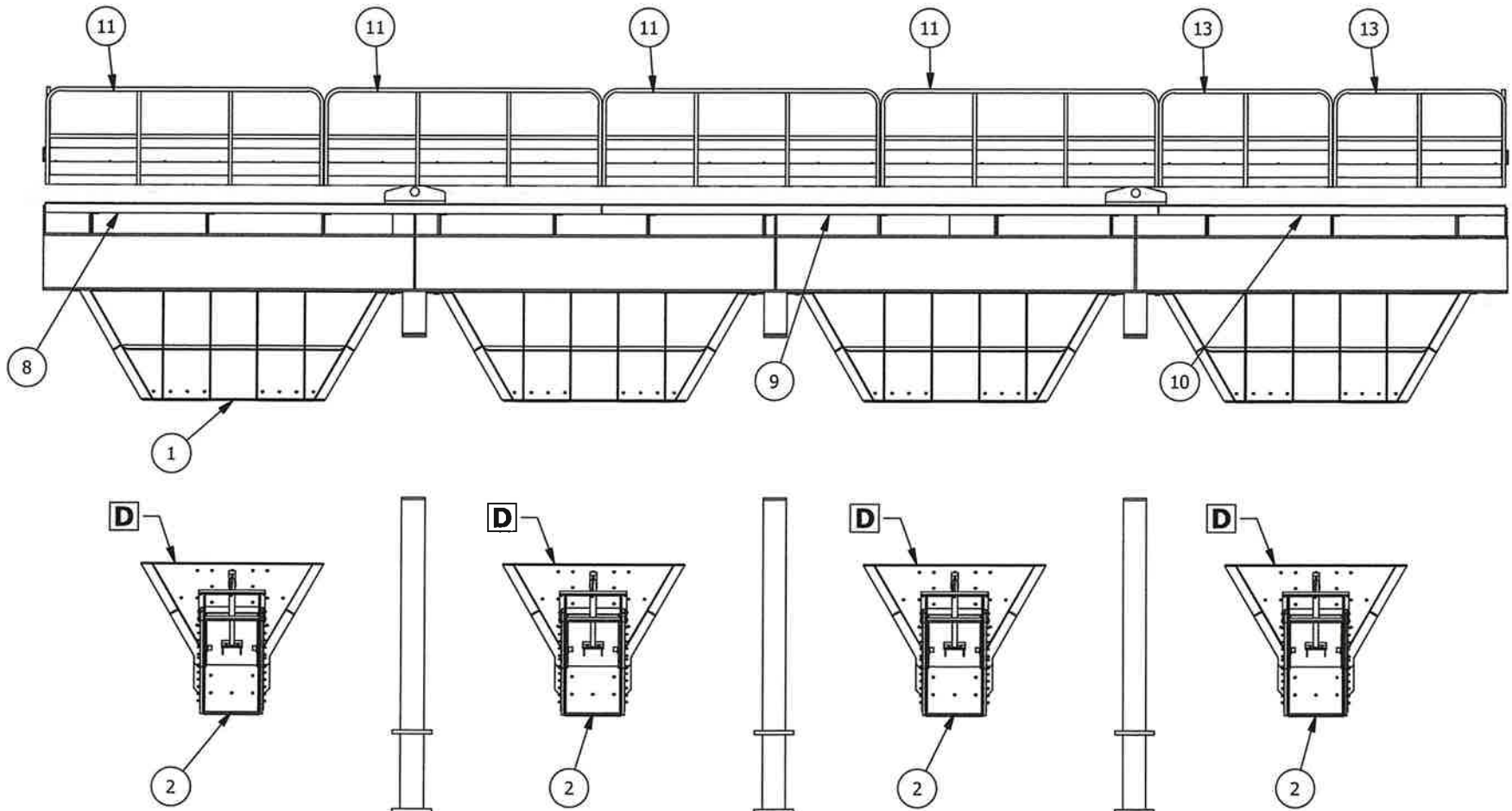
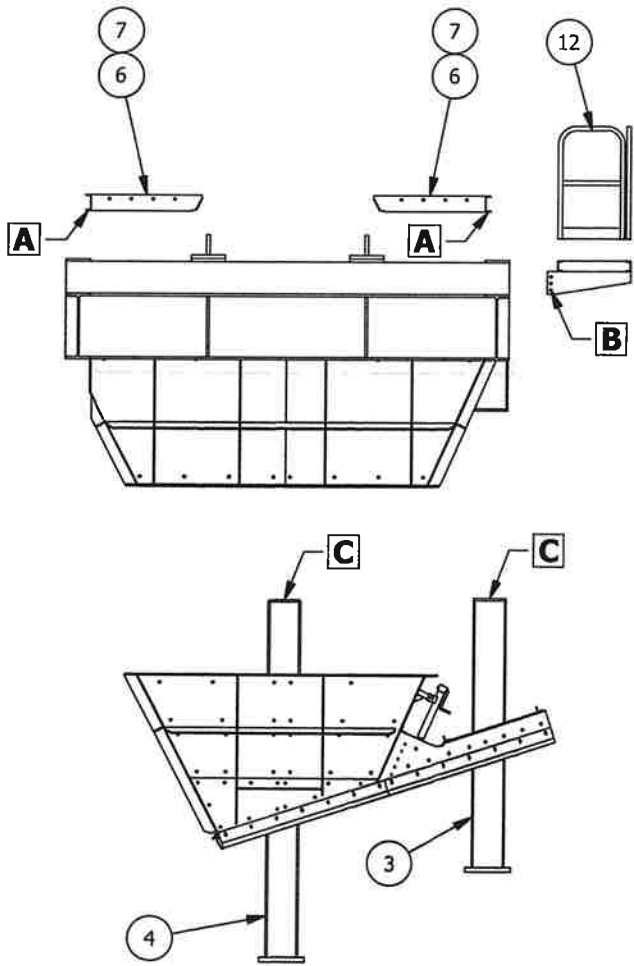
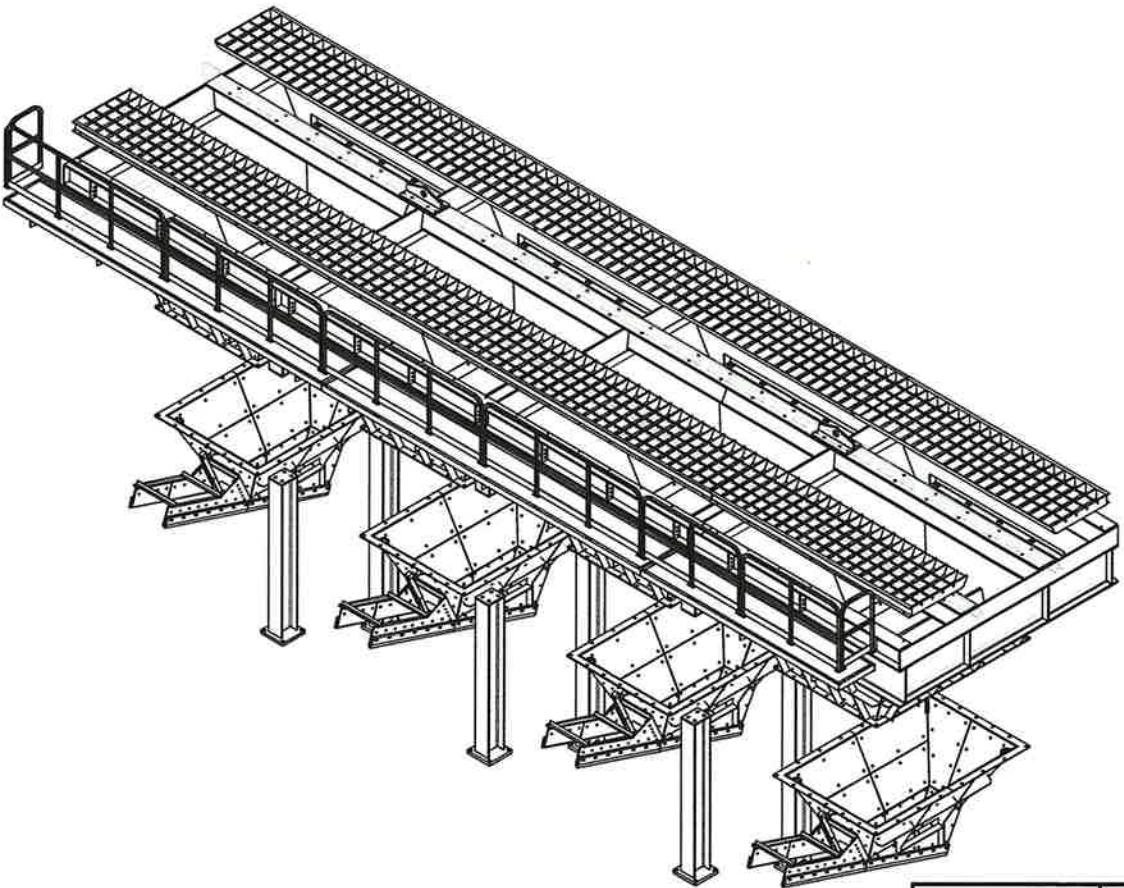
N/A

SIZE: B

SHEET: 2 OF 2

DATE: 1/18/2022

PARTS LIST				
ITEM	PART NUMBER	QTY	TITLE	DESCRIPTION
1	5150-100	1	TOP SUPPORT	WELDMENT
2	5150-100B	4	HOPPER BOTTOM HALF	WELDMENT
3	5150-101	3	LEG 1	WELDMENT
4	5150-102	3	LEG 2	WELDMENT
5	5150-103	4	LIFTING EYE	WELDMENT
6	5150-200	2	GRATE LONG	WELDMENT
7	5150-201	2	GRATE SHORT	WELDMENT
8	5150-300A	1	CATWALK	ASSEMBLY
9	5150-300B	1	CATWALK	ASSEMBLY
10	5150-301	1	CATWALK	ASSEMBLY
11	5150-302	4	HANDRAIL	ASSEMBLY
12	5150-303	2	HANDRAIL	ASSEMBLY
13	5150-304	2	HANDRAIL	ASSEMBLY



RAIL HOPPER ASSEMBLY
OVERALL

DWG #: 5150-000

P.O. BOX 306
WALNUT, IL 61376
(815) 379-2090

DETAIL: JLB

DESIGN: JLB

N/A

SIZE: B

SHEET: 1 OF 2

DATE: 1/18/2022



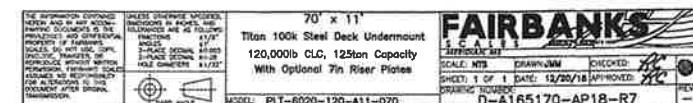
1. Foundation shown is designed for soils with a minimum bearing capacity of 3000 pcf and adequate drainage, if soil conditions do not meet these requirements, adjust foundation or soil as required.
2. In areas of the country where there is severe freezing, increase the depth of the foundation so that the bottom extends below the frost line, or provide a minimum of 12" free draining granular material to prevent frost heave.
3. N.I.S.T. H-44 requires that on the entrance and exit ends of a vehicle scale, there shall be a straight approach that is:
 - 3.1. At least the width of the platform.
 - 3.2. The length of at least one-half the length of the platform but not required to be more than 40', and
 - 3.3. Not less than 10ft of any approach adjacent to the platform shall be constructed of concrete or similar durable material to ensure that this portion remains smooth and level and in the same plane as the platform. Any slope in the remaining portion of the approach shall ensure ease of vehicle access, ease for testing purposes, and drainage away from the platform.
4. N.I.S.T. H-44 requirements and local weights and measures regulations may require installation parameters somewhat different than illustrated on this plan. In order to insure compliance, consult the local Fairbanks service office prior to installation.
5. Refer to manual for all installation and operation instructions.
6. Fairbanks does not recommend any foundation or ground installed guide rails along the sides of the truck scale platform. Damage may occur to the scale if the vehicle hits the guide rail, transferring damaging forces to the platform and the checking system. Usage of this style guide rail will void the product warranty. If guide rails are necessary, please use Fairbanks guide rails.
7. A minimum of 24" of clearance is required on both sides of the scale in order to access load cells, electronics, and checking hardware.

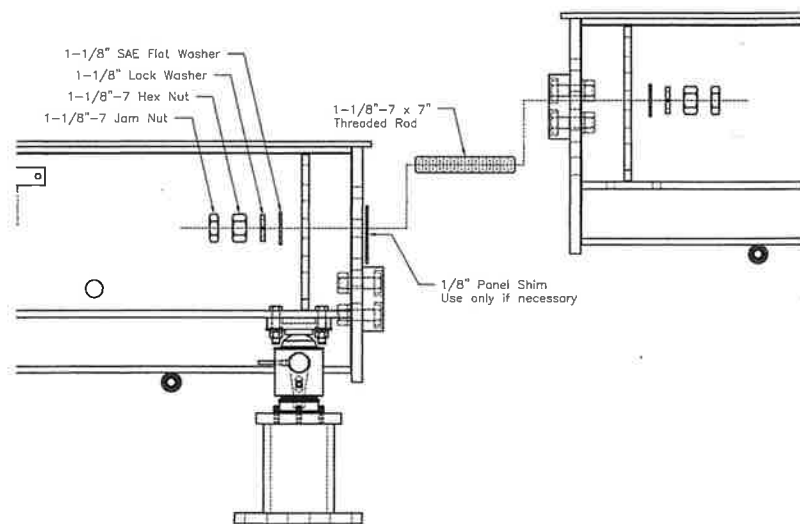
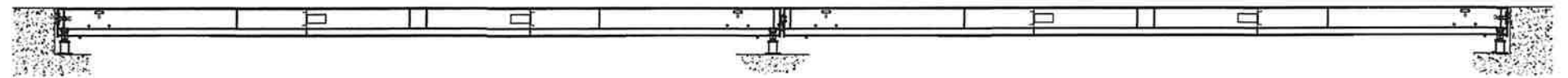
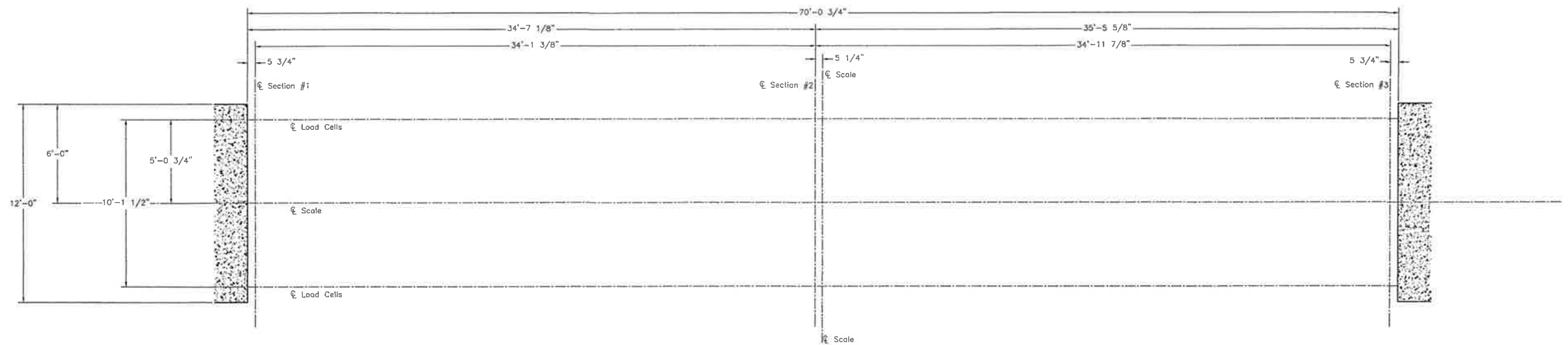
REINFORCING STEEL NOTES

1. Reinforcing steel are to be ASTM 615, Grade 60 or equal. Bend bars cold to conform with required details. Rebar will be free of all mud, debris, cement grout, loose rust, grease and oil that would impair bonding. Space bars properly and tie securely in position before pouring concrete. Tack welding of bars is prohibited
2. Rebar cover:
 - 2.1. Concrete cast against earth: 3"
 - 2.2. Formed concrete exposed to earth or weather: 2"
 - 2.3. Cover at termination and of rebar: 3"

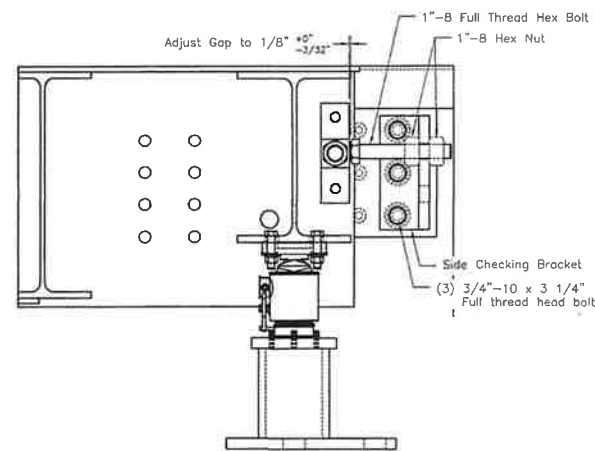
GROUNDING AND ELECTRICAL NOTES:

1. Install (2) 3/4" x 8"-0" long ground rods to project 4" above the surface. Two ground rods are supplied with the PPS.
 - 1.1. One for grounding Intelligo Power Supply. Position the ground rod to match the chosen location for the PPS. The PPS may be located at any interior section, and on either side of the scale.
 - 1.2. One for grounding scale weighbridge. Place within 3ft of scale, at any convenient location. The power supply ground must be separate from weighbridge ground.
2. Install minimum 1 1/2" conduit for cable from scale house, Conduit to extend 2" above the surface (not supplied by Fairbanks Scales). Position near PPS.
3. If alternating current (AC) is required near the scale, it shall not run closer than 36" in parallel with any load cable or other signal carrying cable.

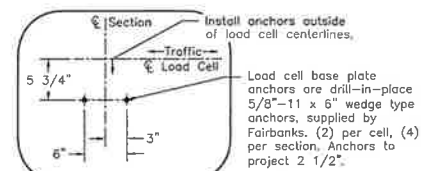




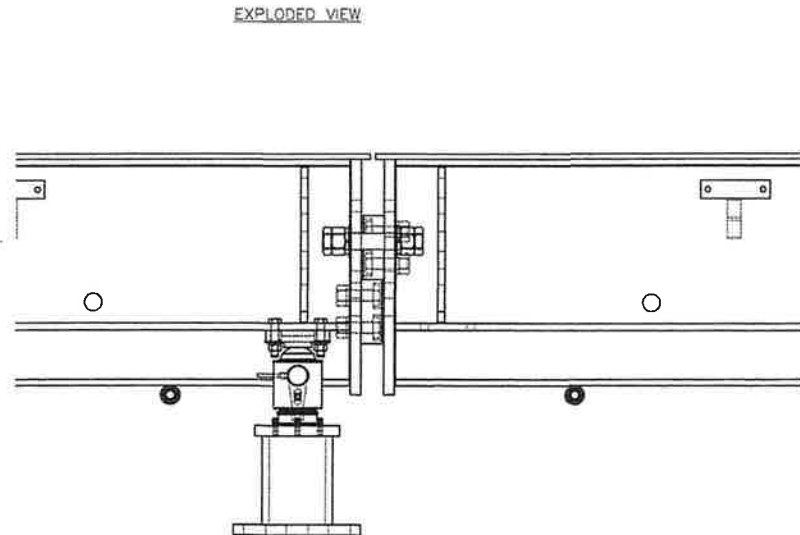
EXPLODED VIEW



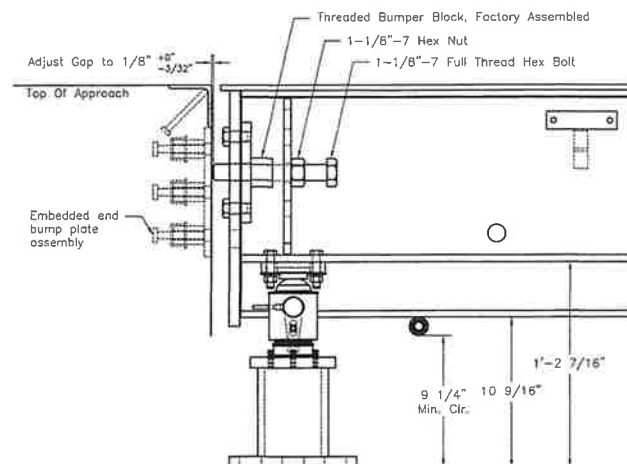
SIDE CHECKING DETAIL



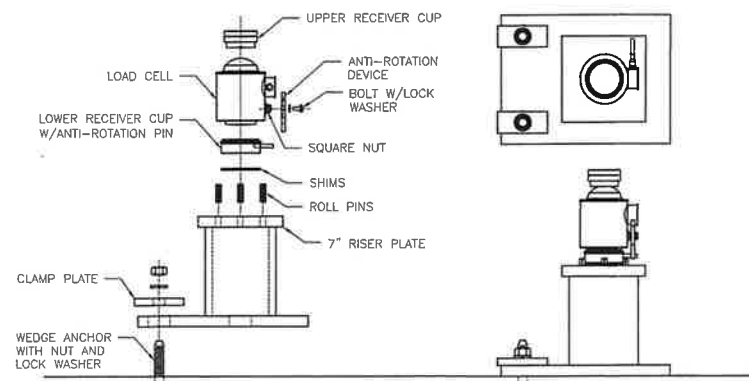
ANCHOR DETAIL



INTER-MODULE CONNECTION DETAIL
Typical at all interior sections



END CHECKING DETAIL
Note: Side checking hardware not shown in this view for the sake of clarity



EXPLODED VIEW

ASSEMBLY VIEW

GENERAL NOTES

- N.I.S.T. H-44 requires that on the entrance and exit ends of a vehicle scale, there shall be a straight approach that is:
 - At least the width of the platform.
 - The length of at least one-half the length of the platform but not required to be more than 40ft, and
 - Not less than 10ft of any approach adjacent to the platform shall be constructed of concrete or similar durable material to ensure that this portion remains smooth and level and in the same plane as the platform. Any slope in the remaining portion of the approach shall ensure ease of vehicle access, ease for testing purposes, and drainage away from the scale.
- N.I.S.T. H-44 requirements and local weights and measures regulations may require installation parameters somewhat different than illustrated on this plan. In order to insure compliance, consult the local Fairbanks service office prior to installation.
- Refer to manual for all installation and operation instructions.
- Fairbanks does not recommend using foundation or ground installed guide rails along the sides of the truck scale platform. Damage may occur to the scale if the vehicle hits the guide rail, transferring damaging forces to the platform and the checking system. Usage of this style guide rail will void the product warranty. If guide rails are necessary, please use Fairbanks accessory rub rails.
- A minimum of 24\" of clearance is required on both sides of the scale in order to access load cells, electronics, and checking hardware.
- On steel deck scale, pay close attention to deck seams when they are not centered on the width of the module. Install the scales in the proper orders and with the proper orientation to ensure that the deck seams align.

GROUNDING AND ELECTRICAL NOTES:

- Install (2) 3/4\" x 8'-0\" long ground rods (to project 4\"). Two ground rods are supplied with scale.
 - One for grounding Intalogix power supply, position to match location of conduit for cable to scale indicator (may be located on any pier adjacent to mounted PPS).
 - One for grounding scale weighbridge, power supply ground must be separate from weighbridge ground.
- Install minimum 1 1/2\" conduit for cable from junction box to scale house. Conduit to extend 2\" above the top of the pier (not supplied by Fairbanks Scales).
- If alternating current (AC) is required near the scale, it shall not run closer than 36\" in parallel with any load cell or other signal carrying cable.

FAIRBANKS CERTIFIED REG. NO. 1530828 CUST. Rodgers Group Inc. DATE 09 March 2021		FAIRBANKS SCALE, NTE SHEET 1 OF 1 DATE 12/25/18 APPROVED DESIGNED BY: [Signature] CHECKED BY: [Signature] D-A165170-Sett-R7
70' x 11' Titan 100k Steel Deck Undermount 120,000lb CLC, 125ton Capacity With Optional 7in Riser Plates		MODEL: PLT-6020-120-A11-070