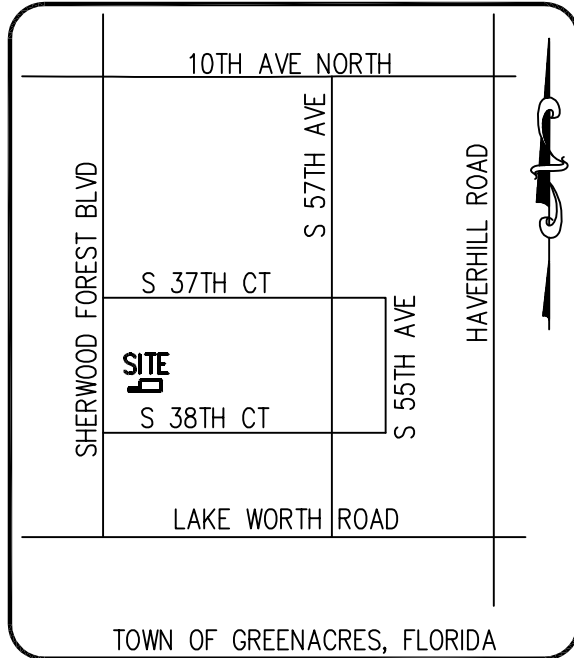


EXHIBIT A
SKETCH OF DESCRIPTION
THIS IS NOT A SURVEY
 NOT VALID WITHOUT ACCOMPANYING SHEETS 2 & 3



LOCATION AND SHEET INDEX MAP
 N.T.S.

DESCRIPTION:

A PARCEL OF LAND BEING A PORTION OF CANAL "B" AS SHOWN ON THE PLAT OF VILLA DEL TRIO, AS RECORDED IN PLAT BOOK PAGE 30, PAGE 115 OF THE PUBLIC RECORDS OF PALM BEACH COUNTY, FLORIDA, AND BEING MORE PARTICULARLY DESCRIBED AS FOLLOWS:

BEGINNING AT THE SOUTHWEST CORNER OF SAID PLAT; THENCE N02°14'57" ALONG THE WESTERLY LINE OF SAID PLAT, A DISTANCE OF 11.77 FEET TO A POINT ON THE SOUTHERLY LINE OF THAT CERTAIN EXCEPTED PARCEL AS RECORDED IN OFFICIAL RECORDS BOOK 3538, PAGE 1618; THENCE S88°03'13"E ALONG SAID SOUTHERLY LINE, A DISTANCE OF 50.00 FEET TO A POINT ON THE EASTERLY LINE OF SAID EXCEPTED PARCEL; THENCE N02°14'57"E ALONG SAID EASTERLY LINE, A DISTANCE OF 30.00 FEET; THENCE LEAVING SAID EASTERLY LINE S88°03'13"E, A DISTANCE OF 90.00 FEET; THENCE S02°14'57"W, A DISTANCE OF 41.77 FEET TO A POINT ON THE SOUTHERLY LINE OF SAID PLAT OF VILLA DEL TRIO; THENCE S88°03'13"E ALONG SAID SOUTHERLY LINE OF SAID PLAT OF VILLA DEL TRIO, A DISTANCE OF 140.00 FEET TO THE **POINT OF BEGINNING**.

CONTAINING 4,348 SQUARE FEET (0.100 ACRES) MORE OR LESS.

SKETCH AND DESCRIPTION

FOR: **LIFT STATION 5015**
PALM BEACH COUNTY WATER UTILITY DEPARTMENT

SCALE:	N.T.S.
DRAWN BY:	DPK
CHECKED BY:	J. MALIN
DATE:	4-28-2023

A Higher Standard of Excellence
engenuity group inc.
 ENGINEERS • SURVEYORS • GIS MAPPERS
 1280 CONGRESS AVENUE, SUITE 101, WEST PALM BEACH, FLORIDA 33409
 PH (561)655-1151 • FAX (561)832-9390 • WWW.ENGENUITYGROUP.COM

FIELD BOOK N°	SHEET:
	1 / 3
FLORIDA R.L.S. #	JOB N°
	20165.13

EXHIBIT A
SKETCH OF DESCRIPTION
THIS IS NOT A SURVEY
NOT VALID WITHOUT ACCOMPANYING SHEETS 1 & 3

NOTES:

1. NO SEARCH OF THE PUBLIC RECORDS HAS BEEN MADE BY ENGENUITY GROUP, INC.
2. THIS SKETCH IS BASED ON INFORMATION FURNISHED BY CLIENT OR CLIENT'S REPRESENTATIVE.
3. THIS SKETCH IS NOT VALID WITHOUT THE ORIGINAL SIGNATURE AND RAISED SEAL OR THE DIGITAL SIGNATURE OF A FLORIDA LICENSED SURVEYOR AND MAPPER.
4. BEARINGS SHOWN HEREON ARE BASED ON A GRID BEARING OF NORTH 88°56'43" EAST BETWEEN PALM BEACH COUNTY CONTROL POINTS "LW 12" AND "PHYLLIS", OTHER BEARINGS ARE RELATIVE THERETO.
5. DISTANCES SHOWN HEREON ARE GROUND DISTANCES EXPRESSED IN U.S. FEET AND DECIMAL PARTS THEREOF.
6. COORDINATES SHOWN HEREON ARE BASED ON THE FLORIDA STATE PLANE COORDINATE GRID, EAST ZONE, USING THE NORTH AMERICAN DATUM OF 1983 WITH THE 1990 ADJUSTMENT (NAD 83/90).
SCALE FACTOR: 1.000032028
GROUND DISTANCE x SCALE FACTOR = GRID DISTANCE

LEGEND

⊕	CENTERLINE
ÉLY	EASTERLY
ORB	OFFICIAL RECORD BOOK
N.T.S.	NOT TO SCALE
NLY	NORTHERLY
PB	PLAT BOOK
PBCO	PALM BEACH COUNTY
PG.	PAGE
POB	POINT OF BEGINNING
R/W	RIGHT-OF-WAY
SLY	SOUTHERLY
UE	UTILITY EASEMENT

SURVEYOR'S CERTIFICATE

I HEREBY CERTIFY THAT THE SKETCH REPRESENTED HEREON COMPLIES WITH THE STANDARDS OF PRACTICE, AS SET FORTH BY THE FLORIDA BOARD OF PROFESSIONAL SURVEYORS AND MAPPERS PURSUANT TO SECTION 472.027 FLORIDA STATUTES.

Jennifer Malin Digitally signed by Jennifer Malin
Date: 2023.04.28 14:09:11 -04'00'

JENNIFER MALIN, P.S.M.
PROFESSIONAL SURVEYOR AND MAPPER
STATE OF FLORIDA LICENSE NO. 6667
STATE OF FLORIDA LB #6603

SKETCH AND DESCRIPTION

FOR: **LIFT STATION 5051**
PALM BEACH COUNTY WATER UTILITY DEPARTMENT

SCALE:	N.T.S.
DRAWN BY:	DPK
CHECKED BY:	J. MALIN
DATE:	4-28-2023

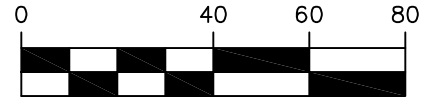


1280 CONGRESS AVENUE, SUITE 101, WEST PALM BEACH, FLORIDA 33409
PH (561)655-1151 • FAX (561)832-9390 • WWW.ENGENUITYGROUP.COM

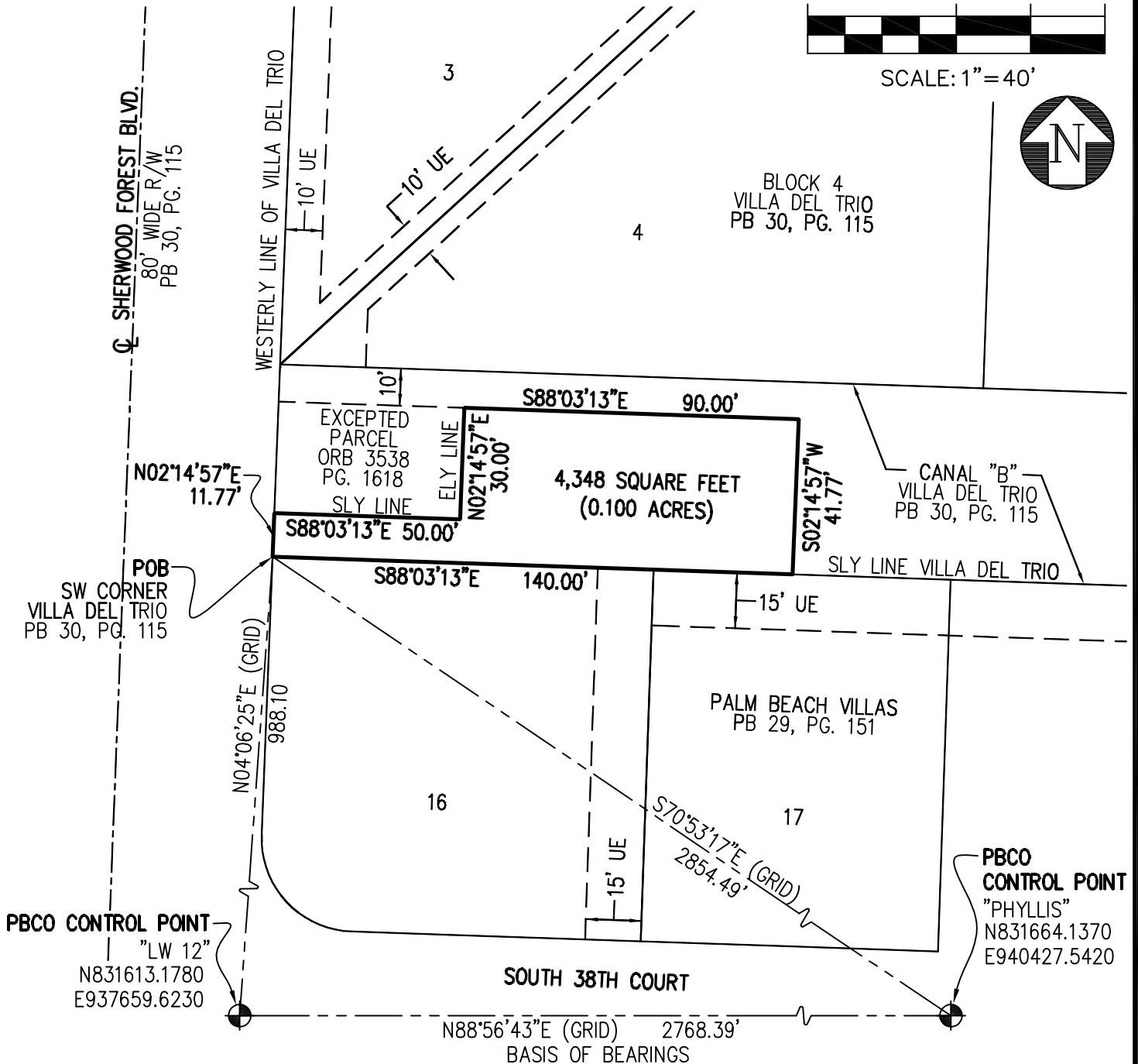
FIELD BOOK Nº	SHEET:
	2 / 3
FLORIDA R.L.S. #	JOB Nº
	20165.13

EXHIBIT A
SKETCH OF DESCRIPTION
THIS IS NOT A SURVEY
 NOT VALID WITHOUT ACCOMPANYING SHEETS 1 & 2

GRAPHIC SCALE



SCALE: 1" = 40'



SKETCH AND DESCRIPTION

FOR: **LIFT STATION 5051**
PALM BEACH COUNTY WATER UTILITY DEPARTMENT

SCALE:	1" = 40'
DRAWN BY:	DPK
CHECKED BY:	J. MALIN
DATE:	4-28-2023

A Higher Standard of Excellence

engenuity
group inc.
ENGINEERS • SURVEYORS • GIS MAPPERS

1280 CONGRESS AVENUE, SUITE 101, WEST PALM BEACH, FLORIDA 33409
 PH (561)655-1151 • FAX (561)832-9390 • WWW.ENGENUITYGROUP.COM

FIELD BOOK N°	SHEET:
	3 / 3
FLORIDA R.L.S. #	JOB N°
	20165.13