

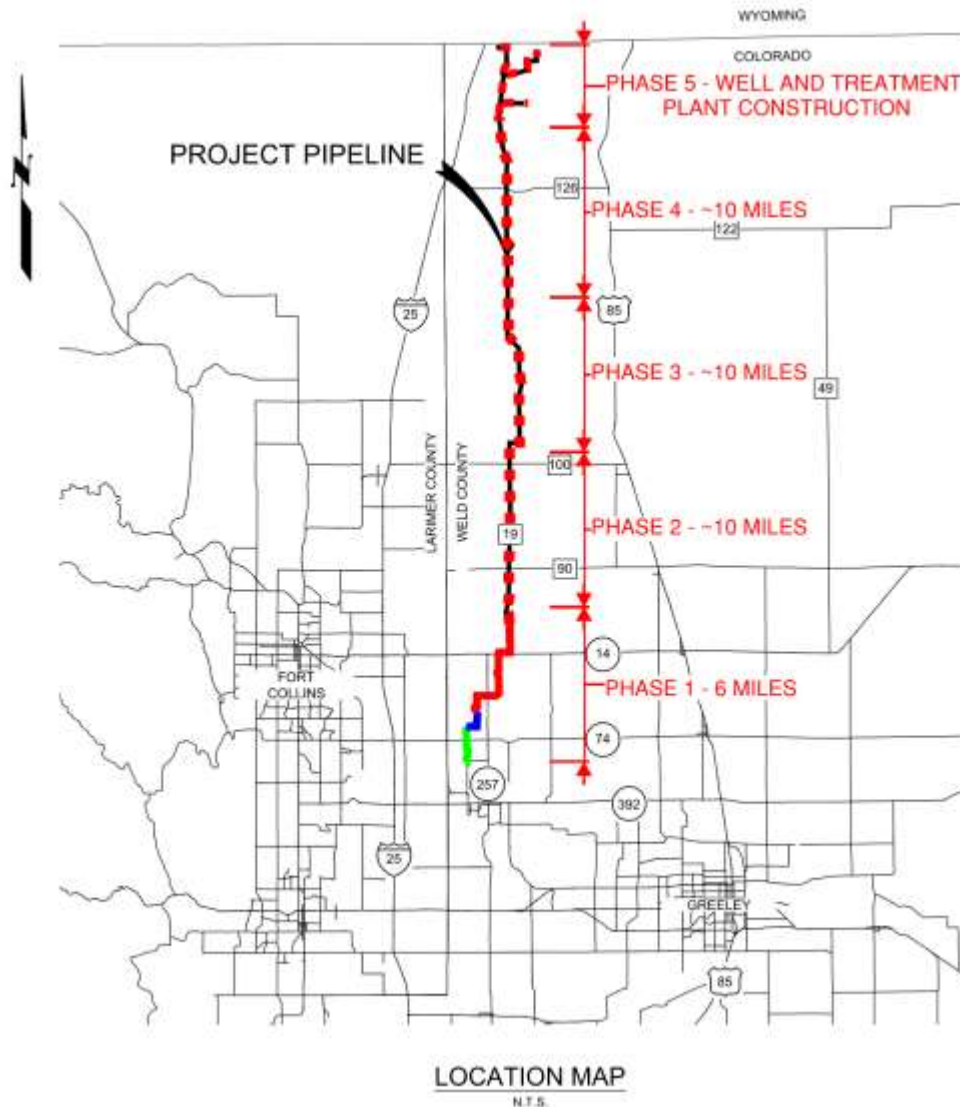
A decorative wavy line in a light beige color spans the top of the slide.

TERRY RANCH PROJECT WATER SUPPLY PROGRAM

SEGMENT 1 STATUS UPDATE

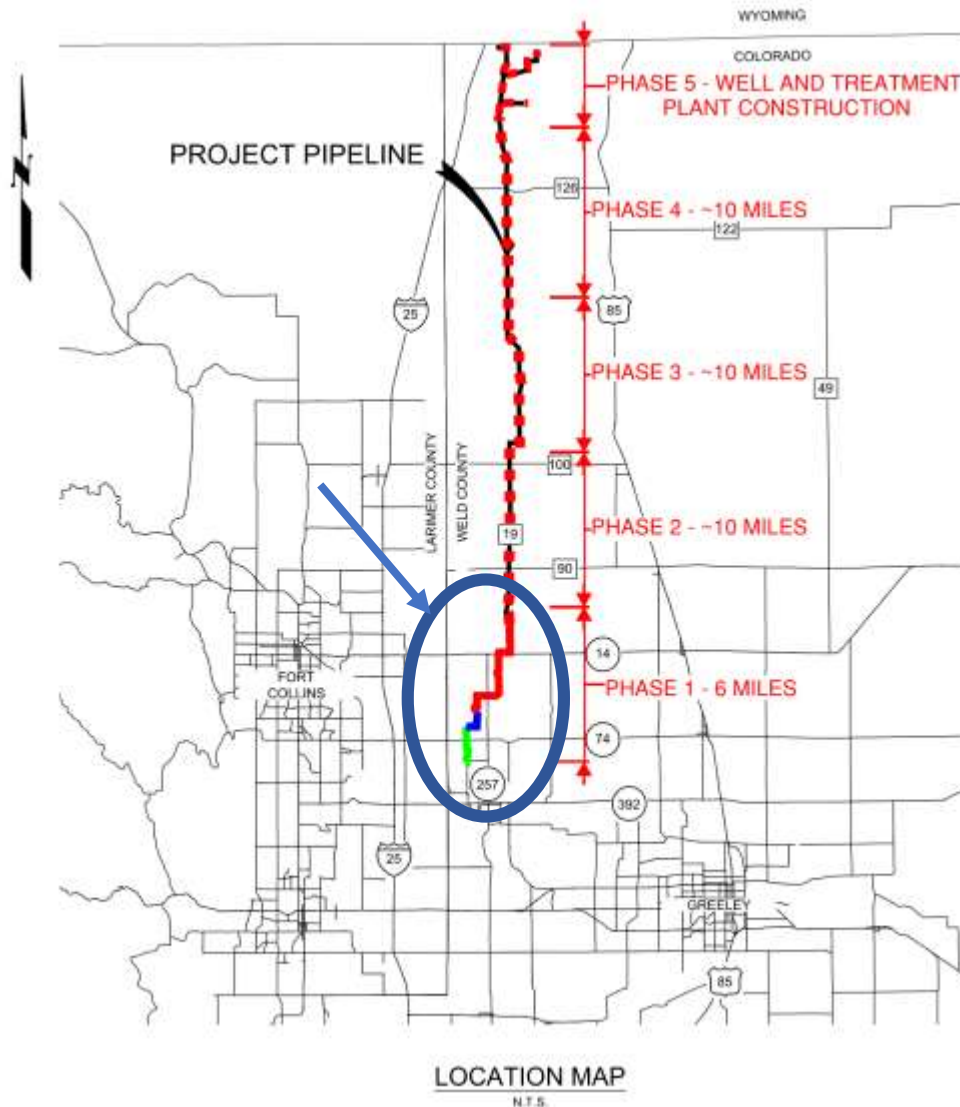


OVERALL PIPELINE PLAN



- Phase 1
 - 2023/2024 – first 6 miles in three work packages
- Phases 2-5
 - Remaining Phases planned for construction following Phase 1
 - Roughly 10 mile segments
 - Raw water pumping, treatment, and storage planned in phases as well based on future projected use.

Phase 1 - PIPELINE PLAN



- Phase 1

- Design advanced from May to present
- 2023/2024 – first 6 miles designed and constructed in three work packages
- Phase 1 gets pipeline from connection to Bellvue 60" transmission line to north of HWY 14 to be outside of current highly developing areas

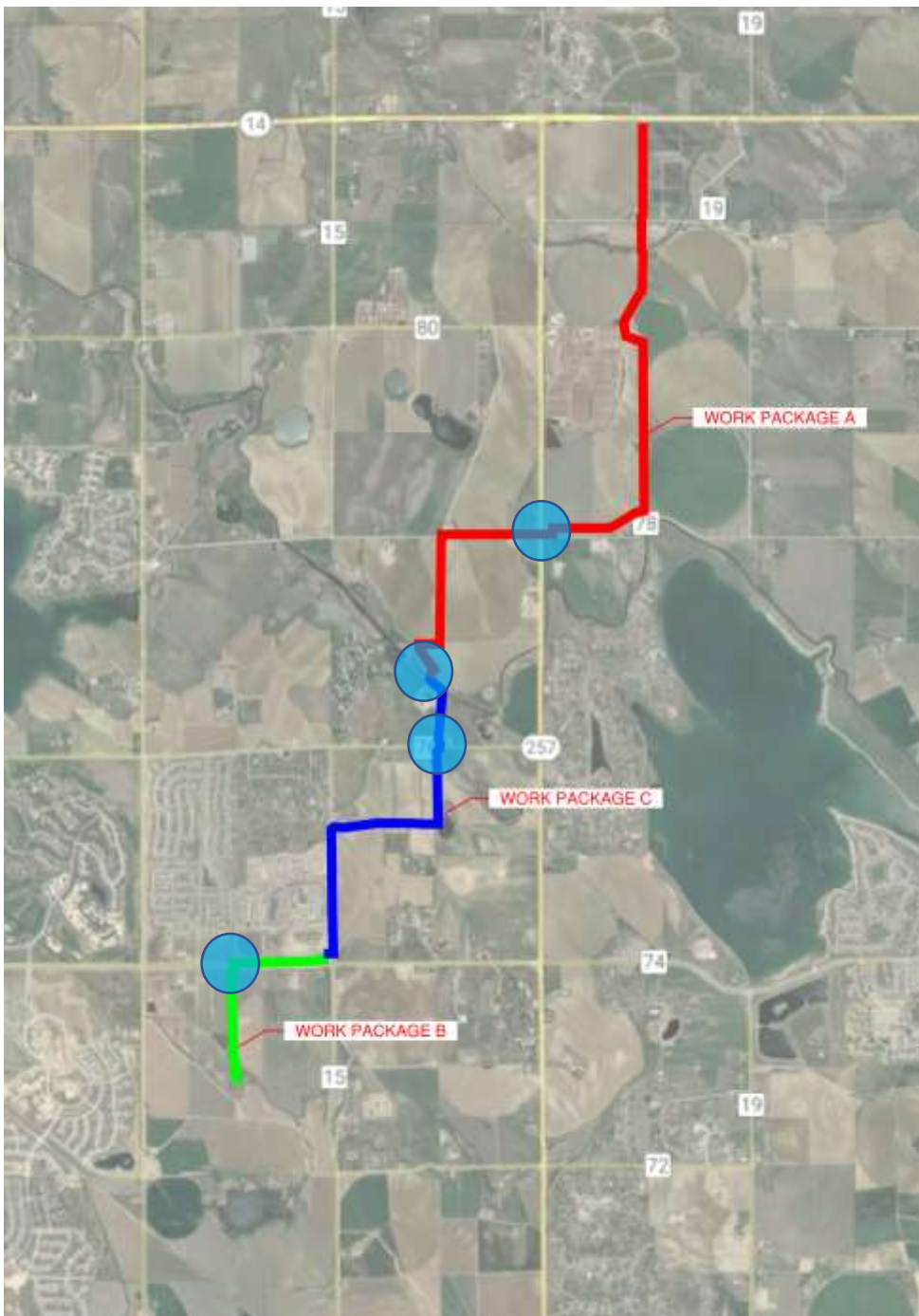
SEGMENT 1- EXTENTS

- Segment 1 Broken into 3 Work Packages (WP)
 - WP-A: Larimer and Weld County Canal Crossing to HWY 14
 - WP-B: 60" Potable Line connection to Harmony Rd/CR 15
 - WP-C: Harmony Rd to Larimer and Weld County Canal Crossing



SEGMENT 1- TUNNELS

- Currently 4 Tunnels Planned
 - WP-A
 - HWY 257
 - WP-B
 - Harmony Road
 - WP-C
 - Larimer and Weld County Canal
 - CR 76



SEGMENT 1- EASEMENTS

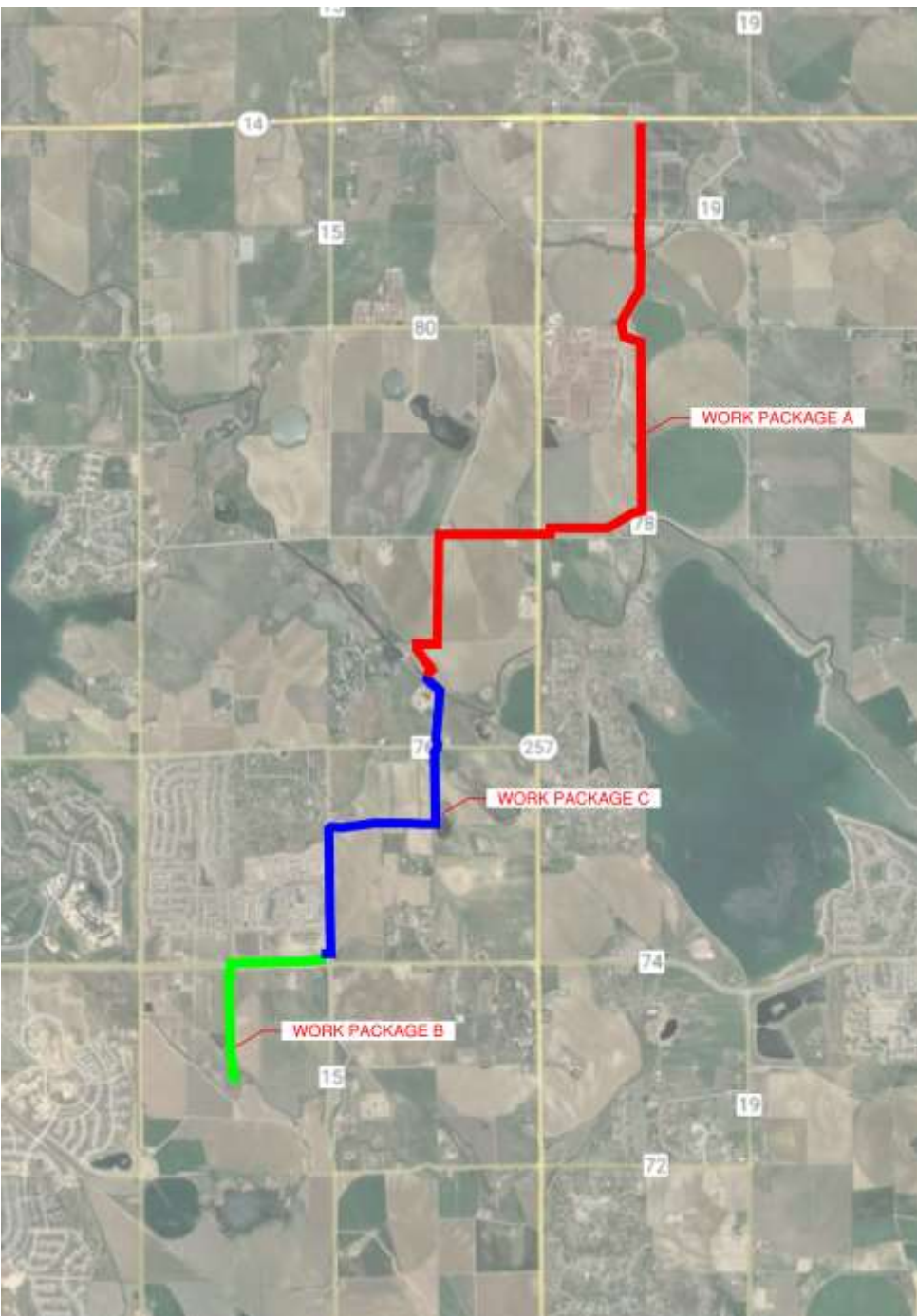
- Current Easement Status

- WP-A: Some legal descriptions still being drafted; Acquisitions are in progress for the rest.
- WP-B: All Easement Agreements are complete, Acquisitions are in process
- WP-C: Legal descriptions being developed based on design layout, not finalized yet



SEGMENT 1- SCHEDULE

- Overall Construction
 - Feb/Mar 2023 – July 2024
- Work Packages A & B
 - 95% design complete
 - Contractor pricing due in early Jan
 - Steel pipe fabrication in process
 - Construction start in Feb/March
- Work Package C
 - In design development
 - Planned construction start – May 2023



- 
- City of
Greeley
Colorado

Terry Ranch - State Land Board (SLB) Lease



- SLB Lease Overview

- The lease was assigned to Greeley at the closing of Terry Ranch
- SLB parcels dispersed in a checkerboard pattern with Terry Ranch
- Lease allows Greeley to develop and use leased water from the SLB parcels surrounding Terry Ranch
- Expires on January 18, 2028



PRELIMINARY WELL LOCATIONS

Wyo-CO

WWR-1 (670)

WWR-2 (670)

EB-1 (605)

SLB-1

SLB-2

SLB-3

SLB-5

SLB-4

SLB-6

EB-2 (575)

WWR-3 (619)

WINGFOOT WWR-3

SLB-7

SLB-8

SLB-9

SLB-10

SLB-11

SLB-12

SLB-13

KPU_A02

WINGFOOT TH-3

SLB-14

SLB-15

SLB-16

WWR-4 (480)

WWR-5 (476)

WINGFOOT WWR-5

WINGFOOT TH-1

WINGFOOT TH-2

WINGFOOT TH-3

WINGFOOT TH-4

WINGFOOT TH-5

CARR PIT #1

0 0.45 0.9 1.8 Miles

Coordinate System: NAD 1983 UTM Zone 13N
Projection: Transverse Mercator
Datum: North American 1983
Scale: 1:73,683

Service Layer Credits: Sources: Esri, HERE, Garmin, Intermap, increment P Corp., GEBCO, USGS, FAO, NPS, NRCAN, GeoBase, IGN, Kadaster NL, Ordnance Survey, Esri Japan, METI, Esri China (Hong Kong), (c) OpenStreetMap contributors, and the GIS User Community

- 
- City of
Greeley
Colorado

QUESTIONS

