



January 17, 2022

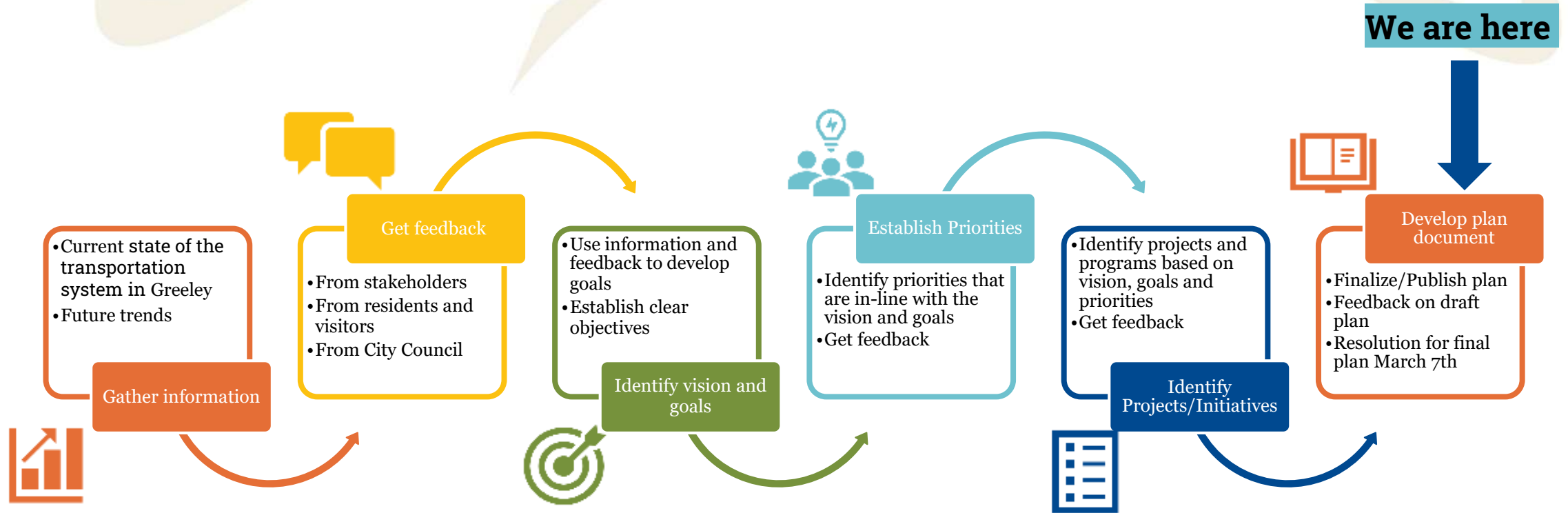
# Greeley on the Go- Transportation Master Plan Final Plan Review

Goal: Provide a framework for transportation investments and priorities in Greeley over the next 20 years

*Vision statement: Greeley on the Go- An ample, easy, and connected transportation system providing seamless mobility to enrich lives and promote economic vitality.*



# Plan Process



# TMP Then & Now:

## Greeley 2035 Comprehensive

Issues

Sustainability

Quality-of-life

Growth and development

Congestion

Funding

Fundamental Elements of Each Plan

Projects developed based on overall network

Planning to move people with vehicles

No performance measures for continued evaluation of system

Individual, segmented pedestrian, bike, transit, & roadway projects

Technology minimally discussed

Introduction of roundabouts as a new traffic control device

New and Updated Roadway Cross Sections

## Greeley 2045 Transportation Master Plan

Goals

Safety

Multimodal network

Equity & health

Economic vitality

Environment & technology

Funding & strategic investments

Projects developed based on priority areas and corridors

Planning to move people with vehicles, transit, and active transportation

Performance measures for continued evaluation of system

Projects holistically consider people walking, rolling, biking, taking transit, and driving

Proactive discussion of evolving transportation technology

Roundabouts prevalent & incorporated as frequent intersection treatment

+

Urban design focus & vibrant, complete streets oriented

+

New traffic calming toolbox

+

Online story map

2

# Transportation Investment for Quality of Life

*“the new plan is focused on urban design geared towards vibrant and inviting neighborhoods with great public spaces to go to and not just spaces to pass through”*





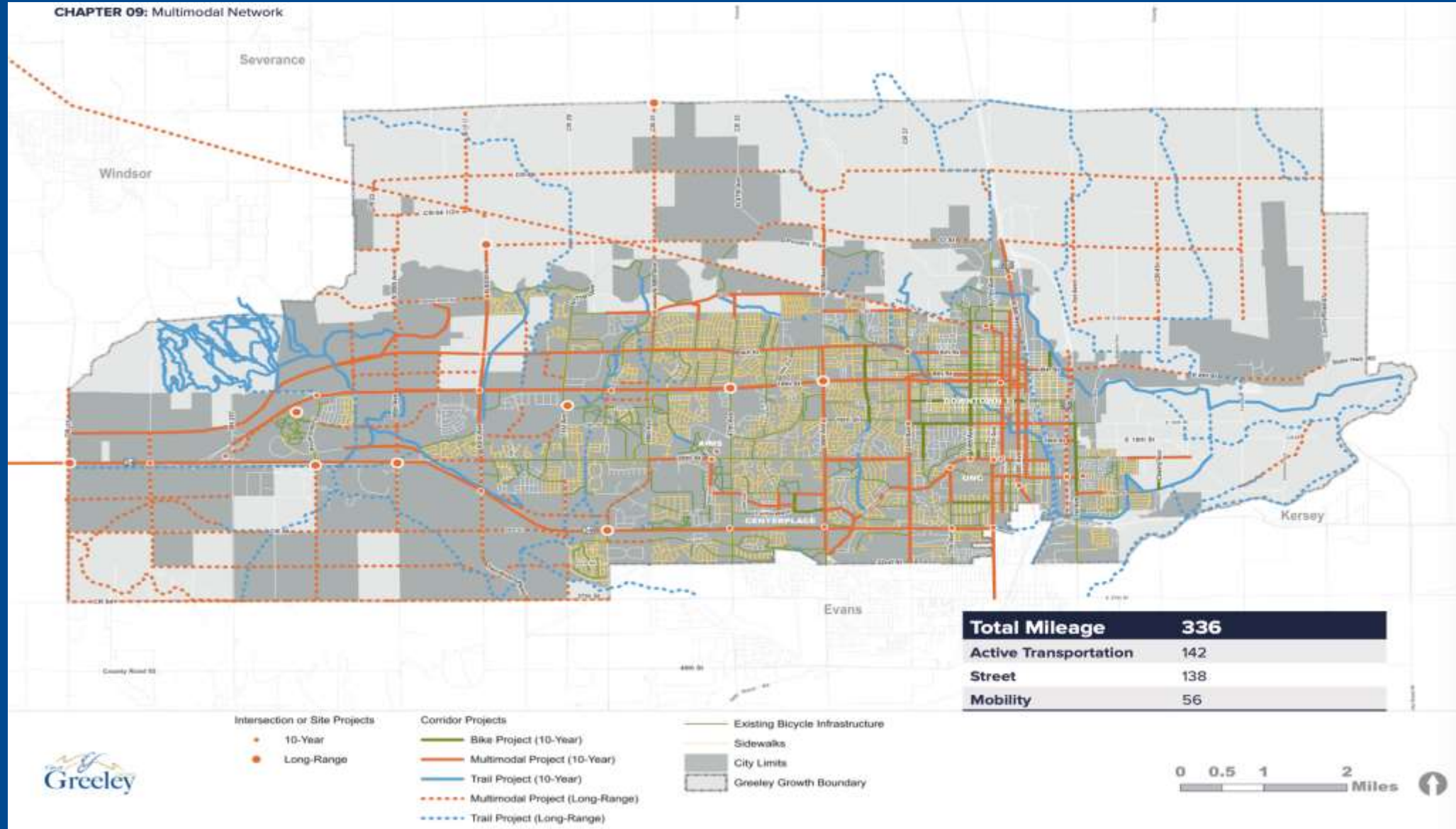


# Mobility Choices

*The new plan provides for flexibility for integrated mobility options (walking, rolling, biking, transit, and driving), readies the City of Greeley to deploy transportation technology and, increases community connectivity as the City of Greeley continues to grow.*



# Multimodal Network





# Policy Initiatives



Safety – Traffic Calming, Neighborhood Safety Program, Crash reduction

Equity & Health – Accessibility, mobility options and services

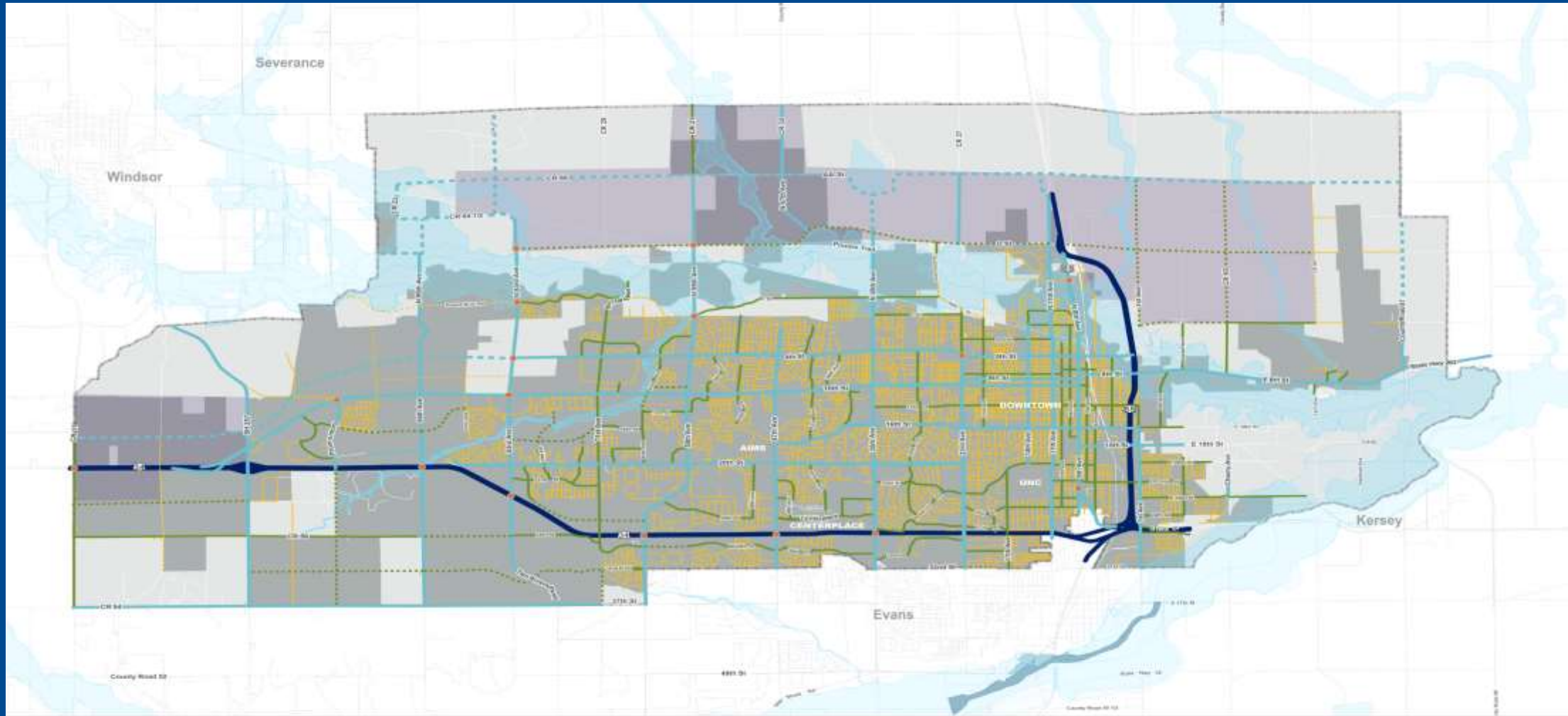
Economic Development – Curbside Management: cleanliness, landscape, mobility, public space, lighting

Environment & Technology – EV Charging, travel technology – data sharing, sustainability

Land Use and Transportation Connection – Street and sidewalk standards, mobility connections, accessibility to services

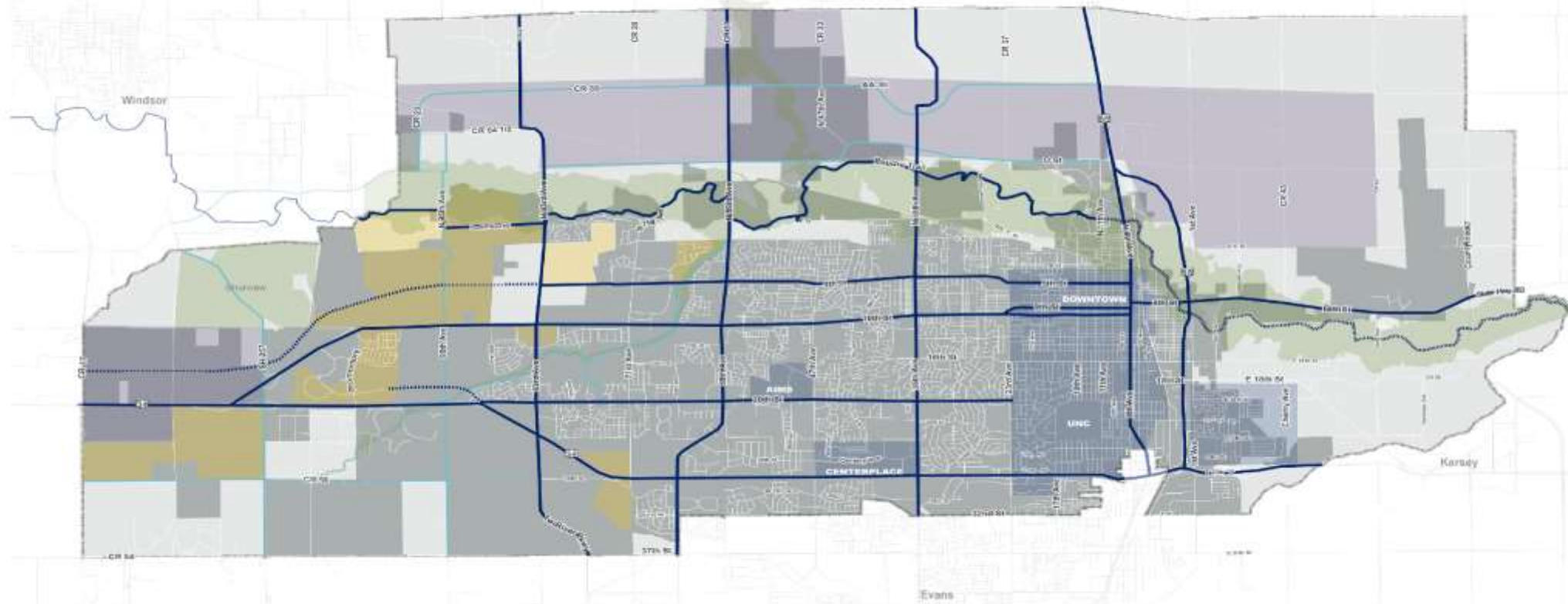


# Master Street Plan





# Transportation Priorities



*DRAFT*



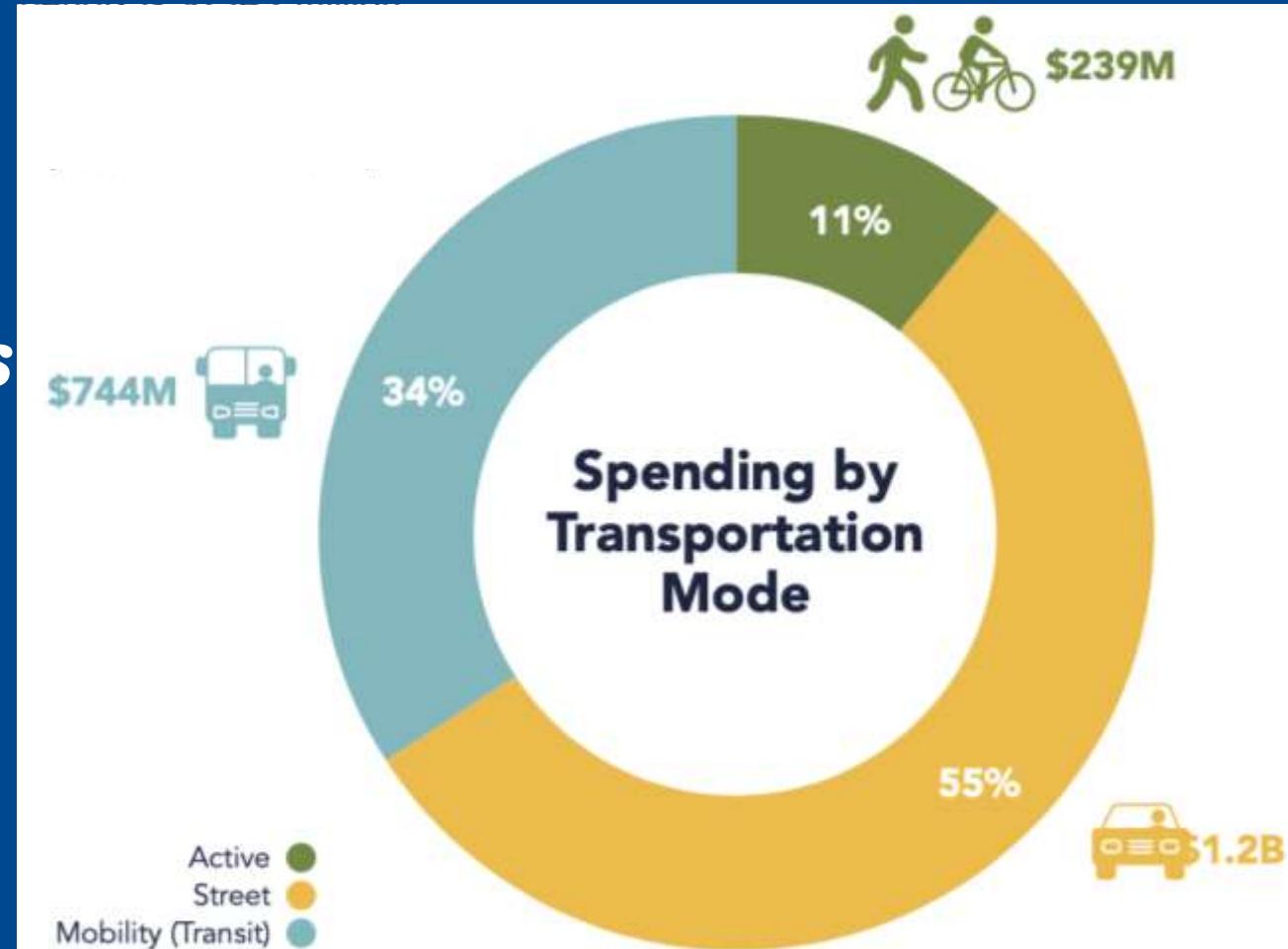
- |                          |                          |                          |                    |
|--------------------------|--------------------------|--------------------------|--------------------|
| Tier 1 Priority Corridor | Tier 2 Priority Corridor | Priority Investment Area | Future Open Space  |
| Future Connection        | Future Connection        | Priority Planning Area   | Future Development |



# Funding Plan

- *55% Street projects*
- *11% Active Transportation projects*
- *37% Mobility projects*

*Greeley on the Go envisions an investment of \$2billion over the next 20 years*







Thank you!  
Questions?

