



TERRY RANCH PROJECT WATER SUPPLY PROGRAM

STATUS UPDATE

Jim Paulson, PE – Civil Engineer IV

Matt Sparacino – Water Resource Administrator III

June 21, 2023



TERRY RANCH PROJECT WATER SUPPLY PROGRAM

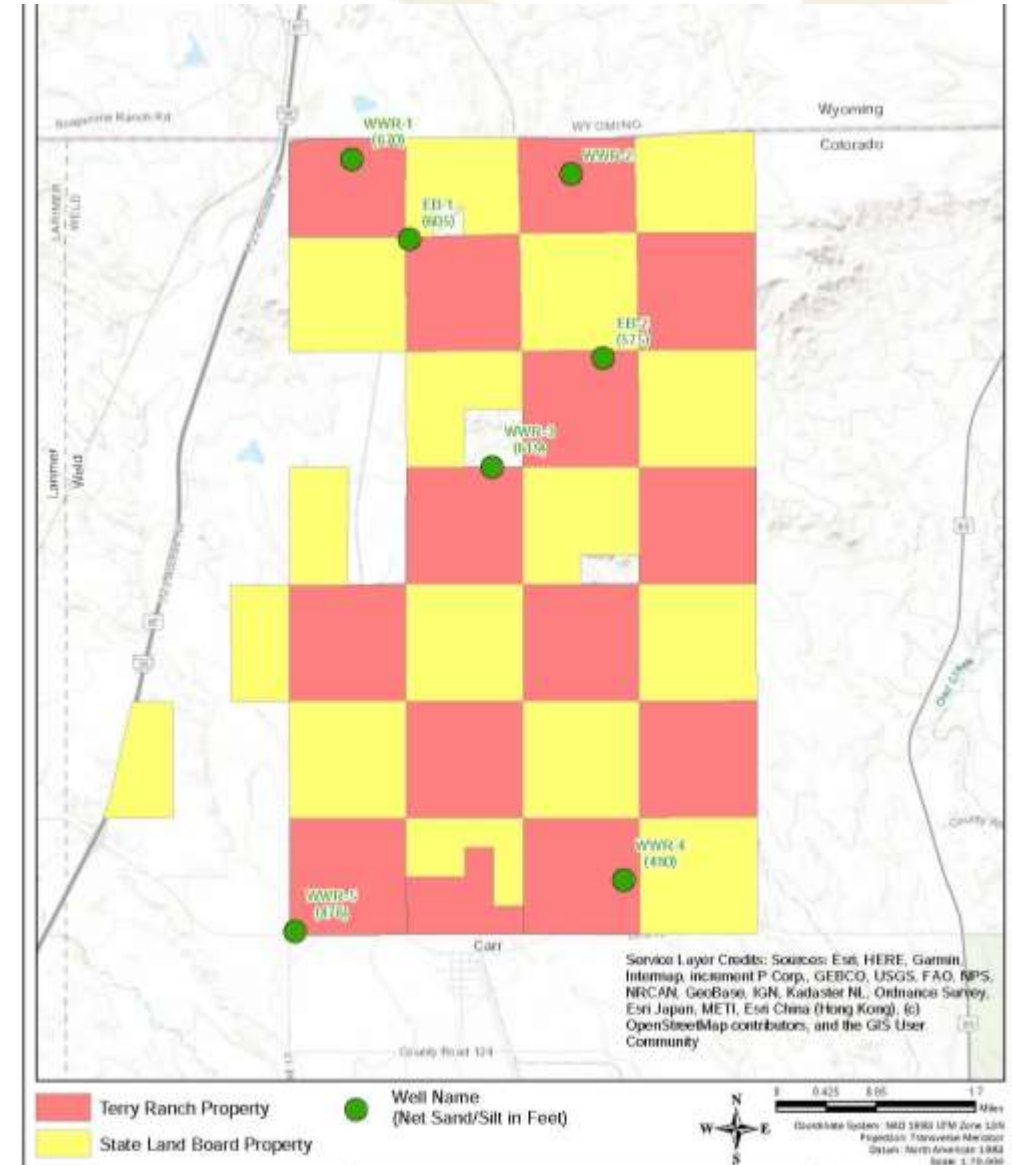
MULTI-PHASE DEVELOPMENT PLAN

1. State Land Board Wells
2. Pipeline Construction
3. Well Field Development (TBD)
4. Collection/Distribution Pipeline Network (TBD)
5. Treatment Plant Design and Construction (TBD)



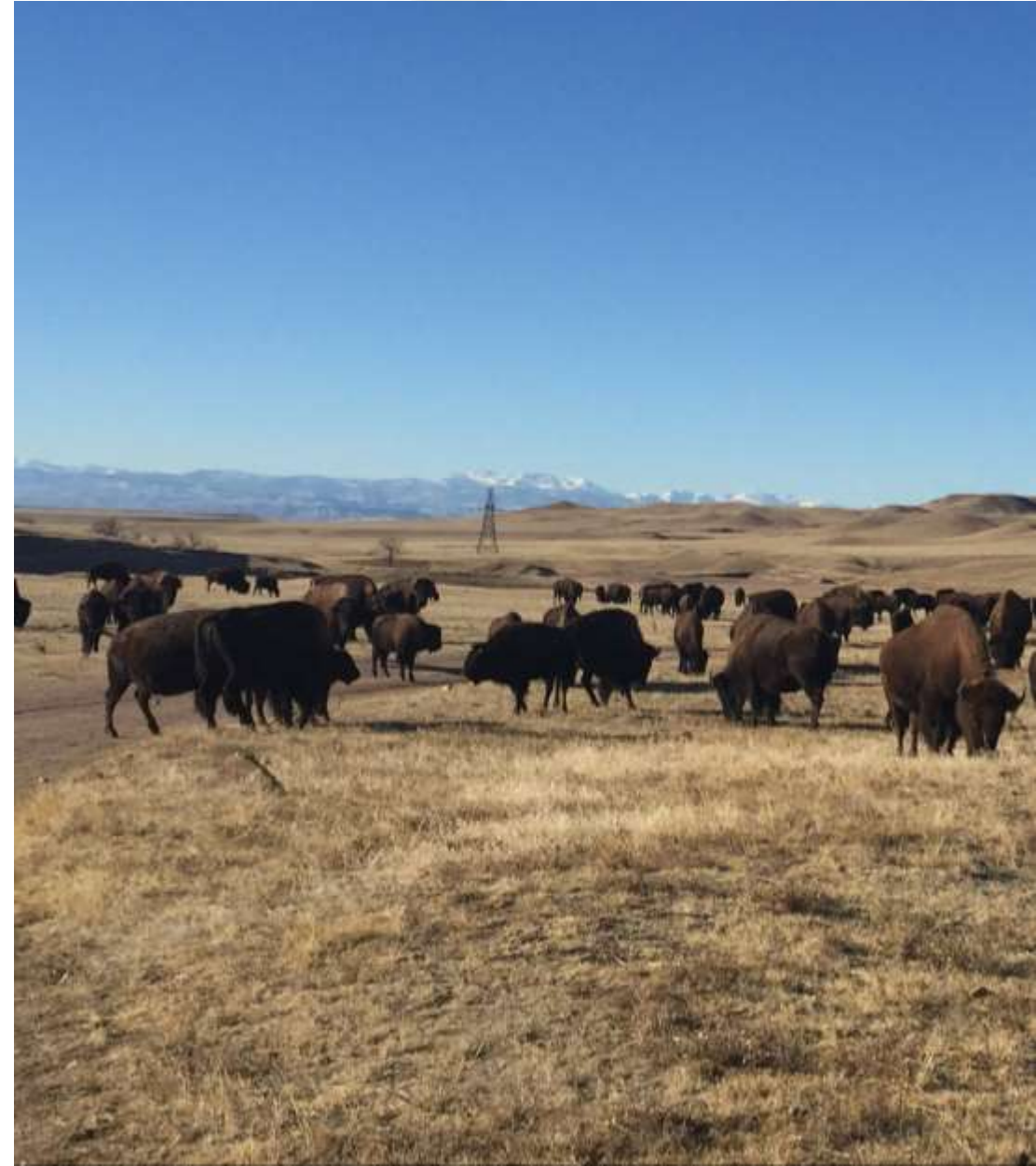
Phase 1 - Terry Ranch/State Land Board Drilling Update

- Wingfoot-SLB 10-year lease (2018-2028) assumed by Greeley in 2021
 - Provides exclusive right to develop Upper Laramie aquifer groundwater
- Use drilling program to determine water type and volume
- Pursue water court application seeking non-tributary determination
 - If determined to be non-tributary: Adds additional volume for future use.
 - If determined to be tributary: Terry Ranch volume is protected from future injurious water development on these SLB parcels.

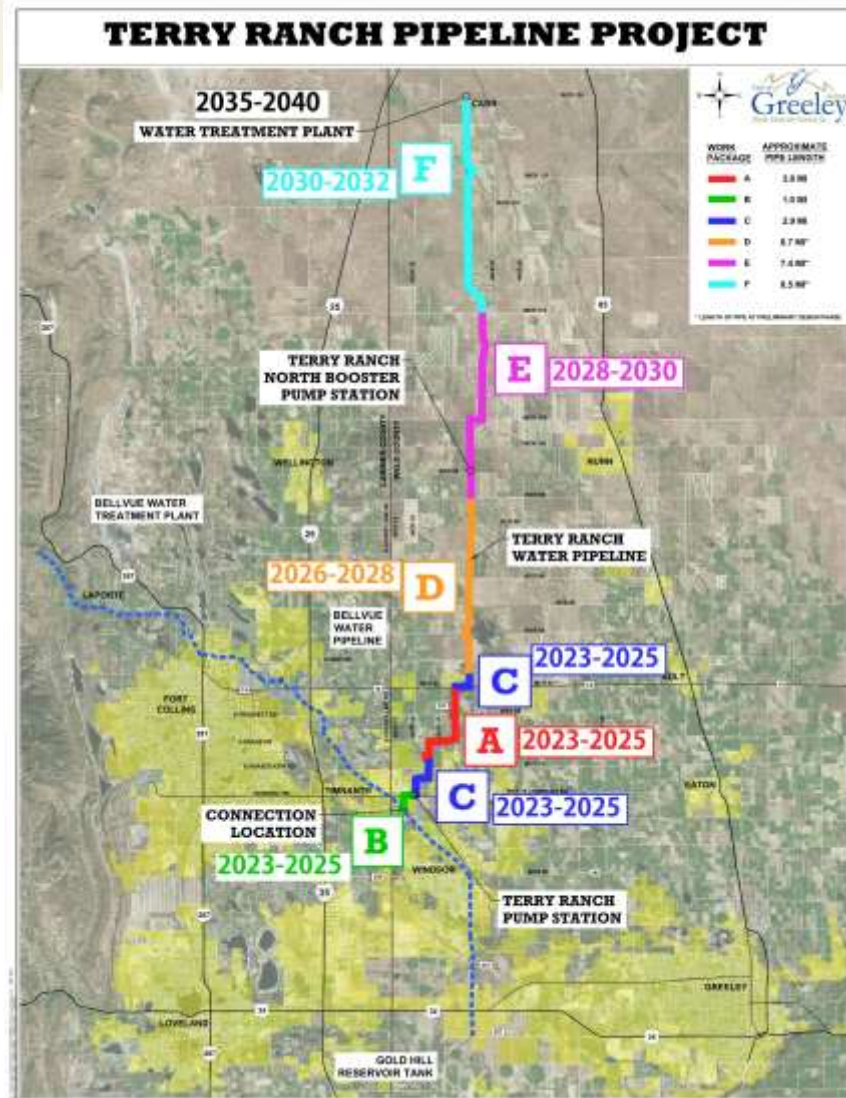


Phase 1 - Terry Ranch/State Land Board Drilling Update

- Terry Ranch access easement obtained
- Drilling RFP
 - Issued January 2023
 - 2 bids received March 2023, inconsistent with budgeted amount
 - Cancelled June 2023
- Staff requested additional 2024 budget
- Lazy D trial concluded April 2023
 - Final ruling expected next month
- Repost RFP 3Q 2023
 - Select contractor by end of 2023
 - Begin drilling 1Q/2Q 2024



Phases 2-5 – Preliminary Development Plan



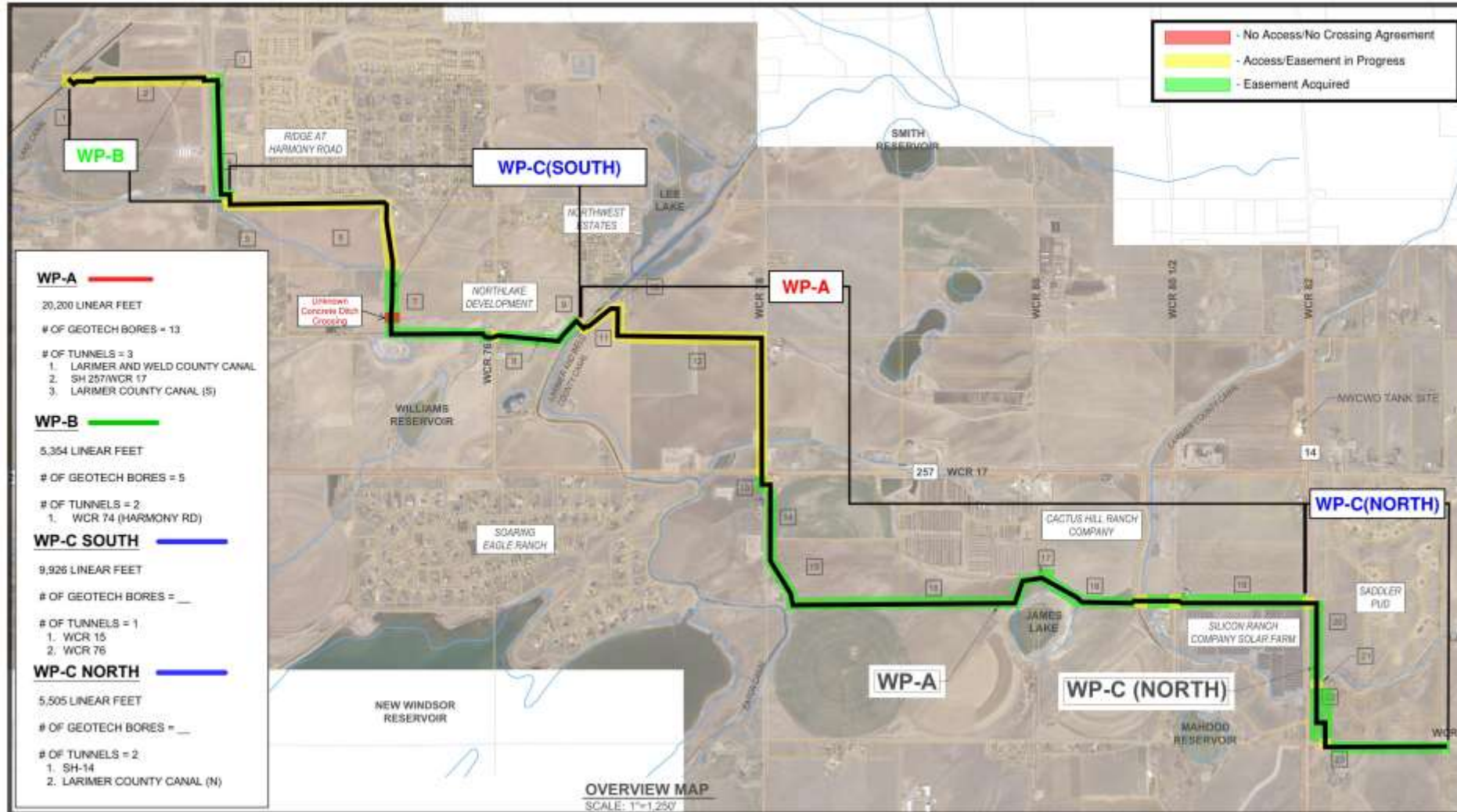
- Phase 2 = Pipeline
 - Segment 1 - first ~7.7 miles of pipeline divided into three work packages (WPA, WPB, WPC)
 - Segments 2-4 (WPD-F) ~7-8 miles
 - Section WPD in planning/design to 60%
 - Sections WPE & F design to 60%
- Phases 3 – 5 = Well Field, On-ranch Pipe, WTP
- Raw water pumping, treatment, and storage TBD from demands.
- Use IWRP as Decision Tool for Timing

Phase 2 - Pipeline Segment 1 - Extents



- Segment 1 Broken into 3 Work Packages (WP)
 - WP-A: Larimer and Weld County Canal Crossing to HWY 14
 - WP-B: Bellvue 60" Line connection to Harmony Rd/CR 15
 - WP-B includes NWCWD Interconnect (Costs Reimbursed by NWCWD)
 - WP-C: Harmony Rd/CR 15 to Larimer and Weld County Canal Crossing

Segment 1 - Easements



Segment 1 - Construction



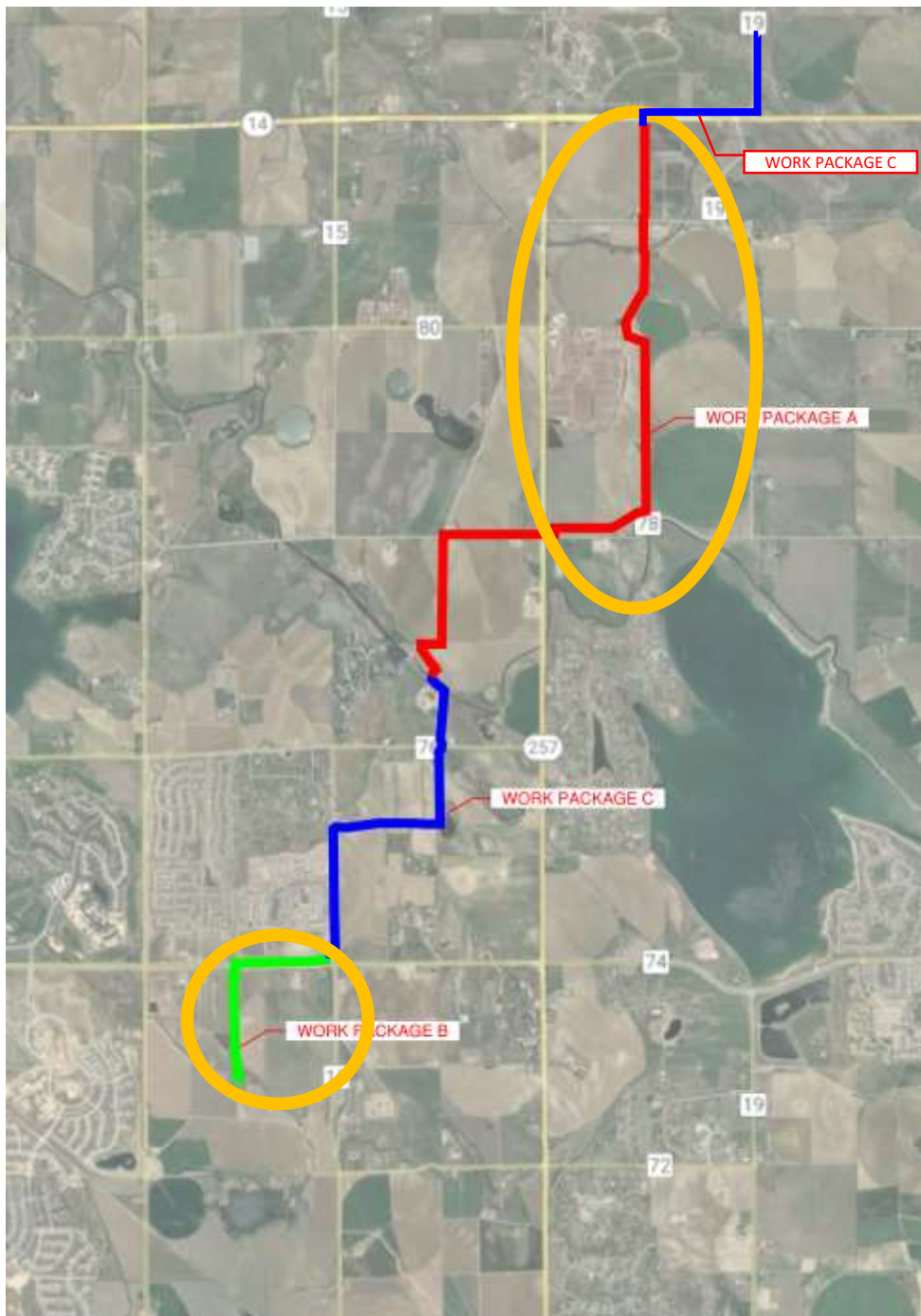
- Due to Volatility in Steel Costs
 - Decided to hedge material costs
 - Contracted to buy steel in late 2022
- ~900 tons of coil purchased
- Steel for ~6.6 miles of pipe
- Began receiving pipe in March

First Pipe Deliveries



Segment 1- Construction

- From Bellvue 60" Tie-in to SH 14
- Construction Contract Finalized March 2023
- Construction started May 6
- First Pipe Laid May 19
- Currently laying pipe on 3 parcels

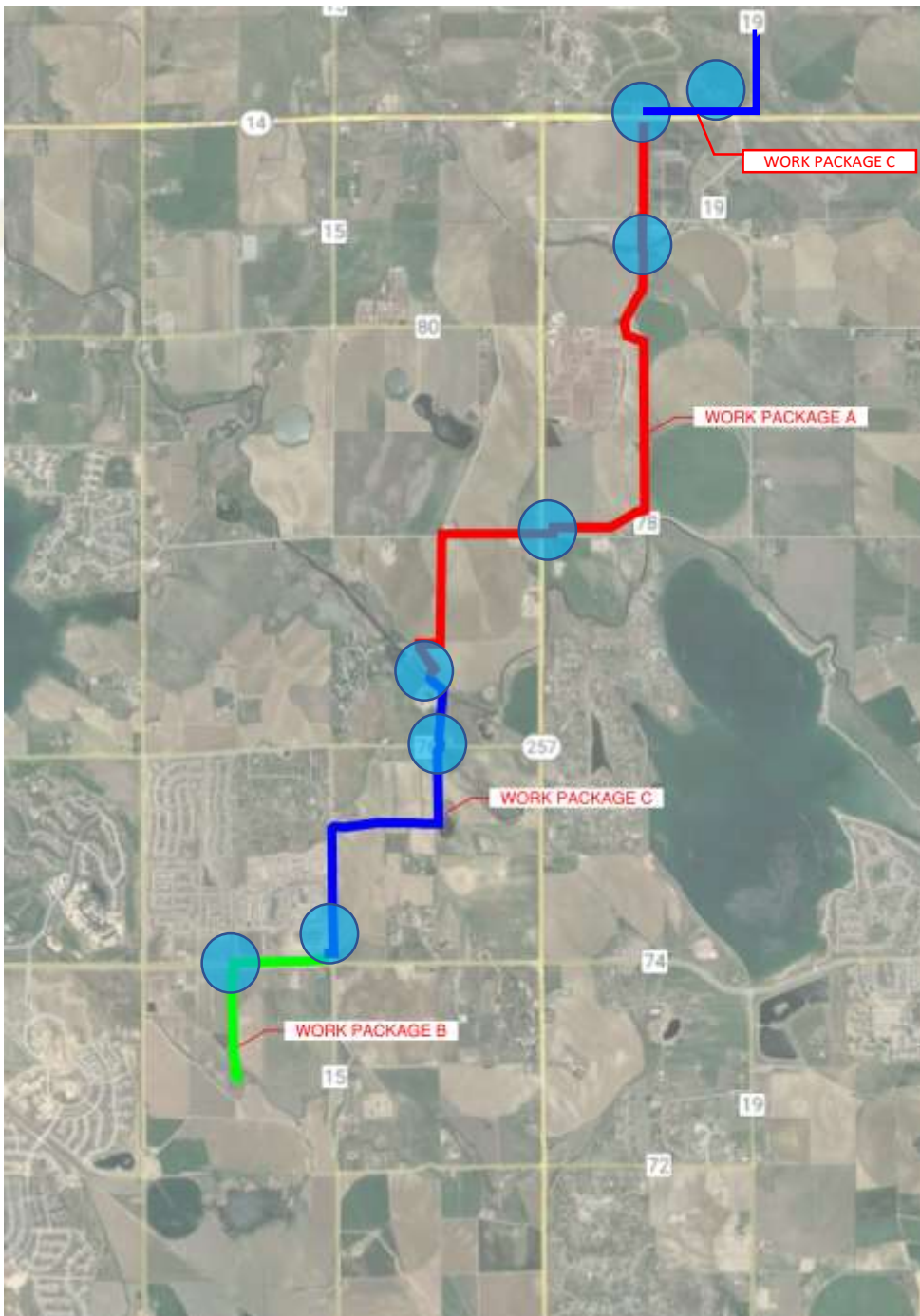


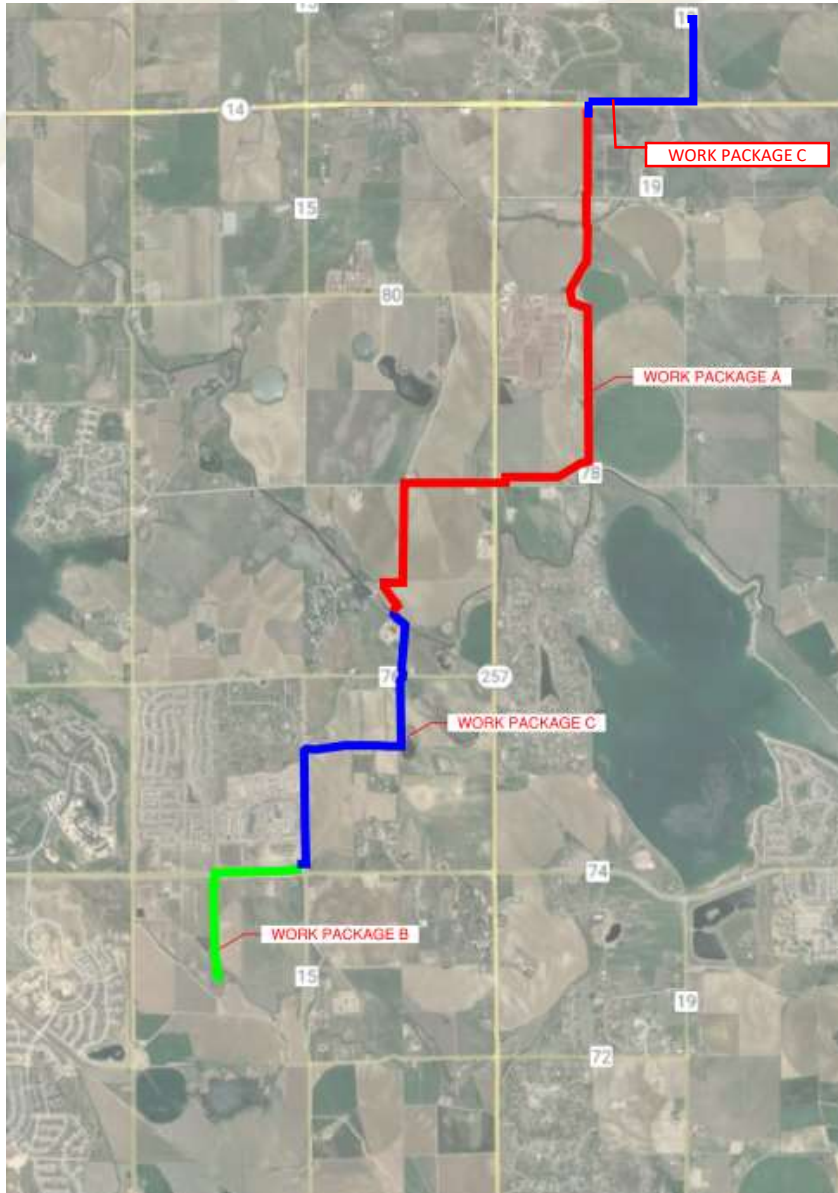
First Pipe Being Laid – May 19, 2023



Segment 1- Tunnels

- Currently Up To 9 Tunnels Planned
- WP-A
 - HWY 257
 - CR 78
 - Larimer County Canal
- WP-B
 - Harmony Road (Schedule Start Jun 19)
- WP-C South
 - Larimer and Weld County Canal
 - CR 76
 - CR 15
- WP-C North
 - HWY 14
 - Larimer County Canal





Segment 1 - Schedule

- Overall Construction
 - April 2023 – October 2024
- Work Packages A & B
 - Contract Awarded March 31
 - Steel pipe fabrication in process
- Work Package C
 - At 90% Design
 - 100% Design by July
 - Pricing and Contract by Late Jul/Aug



Phase 1 - Budget to Date

- \$39M Appropriated in 2022 and 2023
 - Includes 1st Payments from Wingfoot (\$37.5M)
- Contracts To Date (\$27.4M):
 - \$7.35M for Steel Pipe and Appurtenances (Segment 1 up to CO 14 ~6.6 Miles)
 - \$16M for Construction of WPA and WPB (~4.8 Miles)
 - \$4M Professional Services (Includes Design [Segment 1-100% and Segments 2-4-60%], CM, Land Acquisition Services)
 - Land Acquisition = ~\$800K to Date

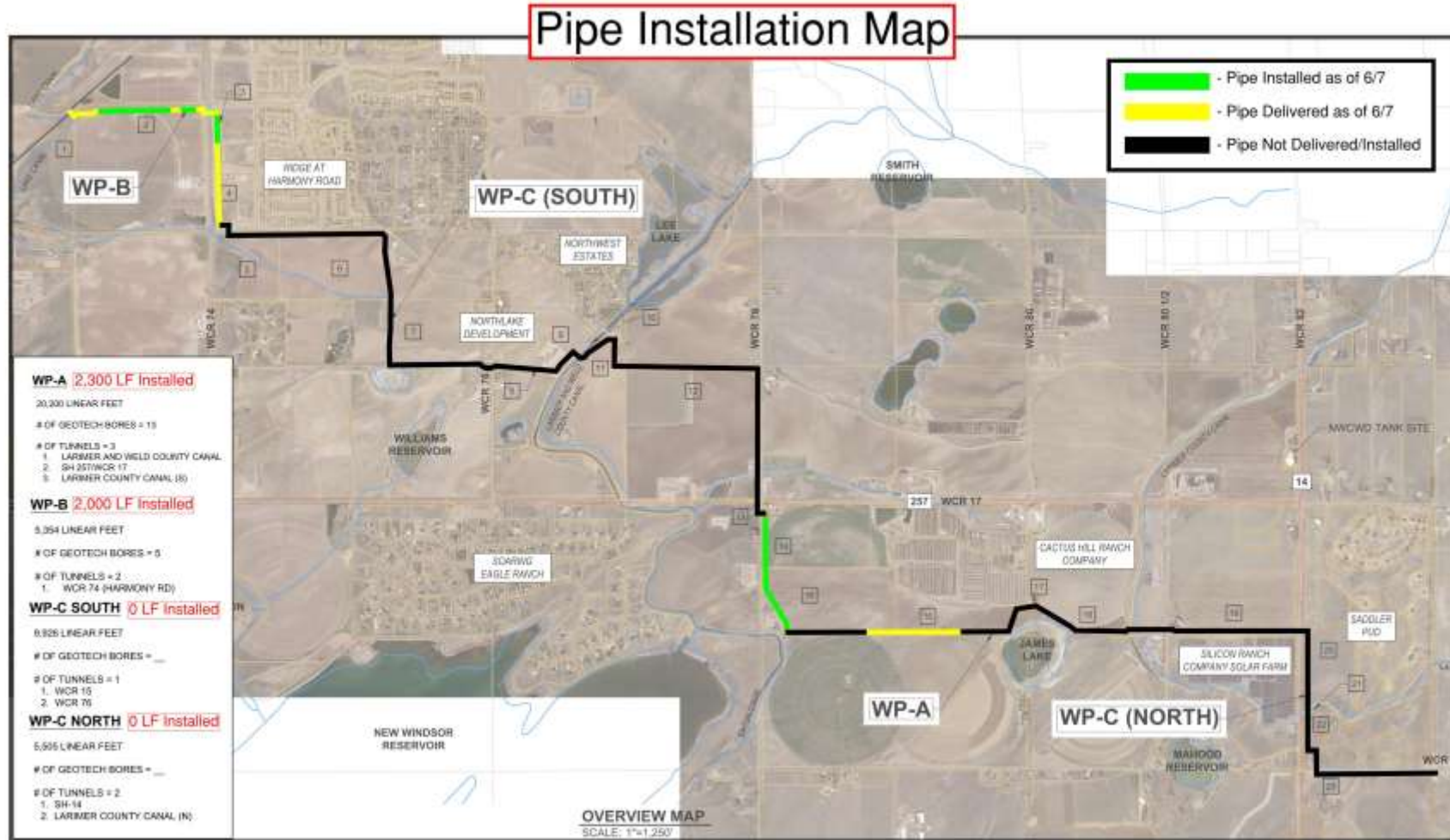


Phase 1 - Budget to Date

- Allocated (\$5.2M):
 - \$3.8M for Land Acquisition
 - \$1.4M Contingency
- Unallocated (\$9.2M)
 - Remaining Steel Pipe and Appurtenances
 - Construction of 1.1 mile past HWY 14 (WPC)
- Reimbursement Requests from Escrow (\$1.28M)
 - Wingfoot \$1.02M (80%)
 - City of Greeley \$256K (20%)



Construction Progress - WPA and WPB



Holiday Testing and Bedding Placement



Placing Pipe and Alignment Check



CHALLENGES

- Permits
 - IGA (Windsor)
 - Tied to Access/Easements
- Timely Easement/Access Acquisition
 - Eminent Domain Process
 - Negotiations
 - Internal Process for Payments
- Crossings
 - O&G Agreements
 - Canal Agreements
- Supply Chain
 - Long Lead Times
 - Commitments from Suppliers (Pipe)



QUESTIONS?

