



Greeley on the Go- Transportation Master Plan

Goal: Provide a framework for transportation investments and priorities in Greeley over the next 20 years



Vision statement: Greeley on the Go- An ample, easy, and connected transportation system providing seamless mobility to enrich lives and promote economic vitality.

Agenda



Where we are



**Transportation
Alternatives**



**Draft Priorities
and Project
Categories**



**Mobility
Direction**

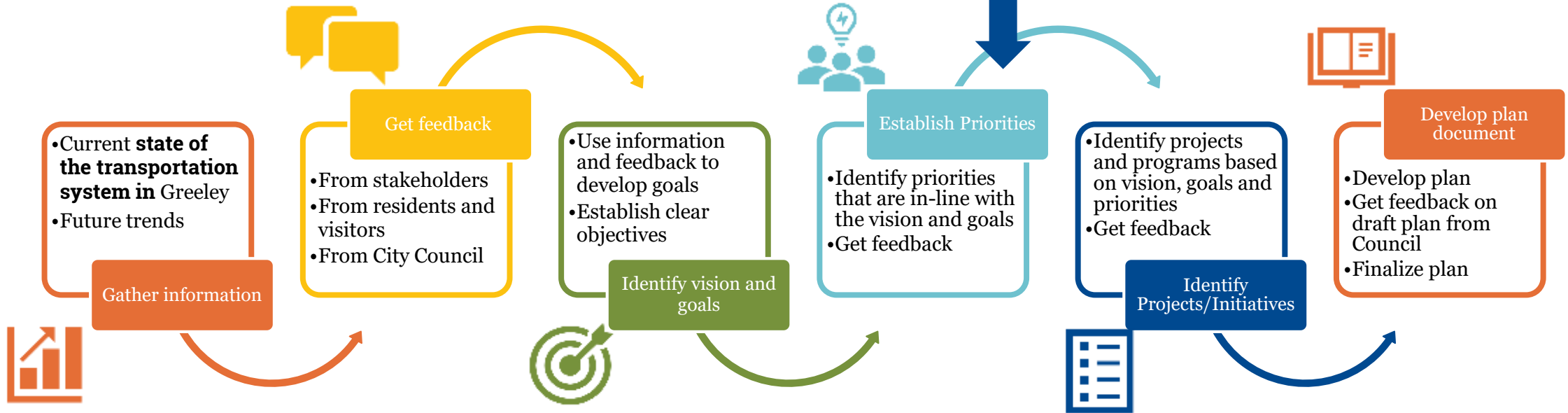
Work Session Objective

- **Gather feedback on:**
 - **The transportation alternative “Transportation for Quality of Life”**
 - **Transit shift towards mobility**
 - **Draft priorities map**
 - **Project categories**
- **City Council TMP Progress updates:**
 - Previous: August 10, 2021; January 25, 2022**
 - Current: May 24, 2022**
 - Next: Summer 2022 (Final Draft Plan)**



Plan Process

We are here



Transportation Alternatives

Alternative I:

High Investment in Vehicle Capacity

- Lower travel time and minimal delays at intersections
- High levels of investment in vehicle infrastructure

Alternative II:

Multimodal Investment for Community Placemaking

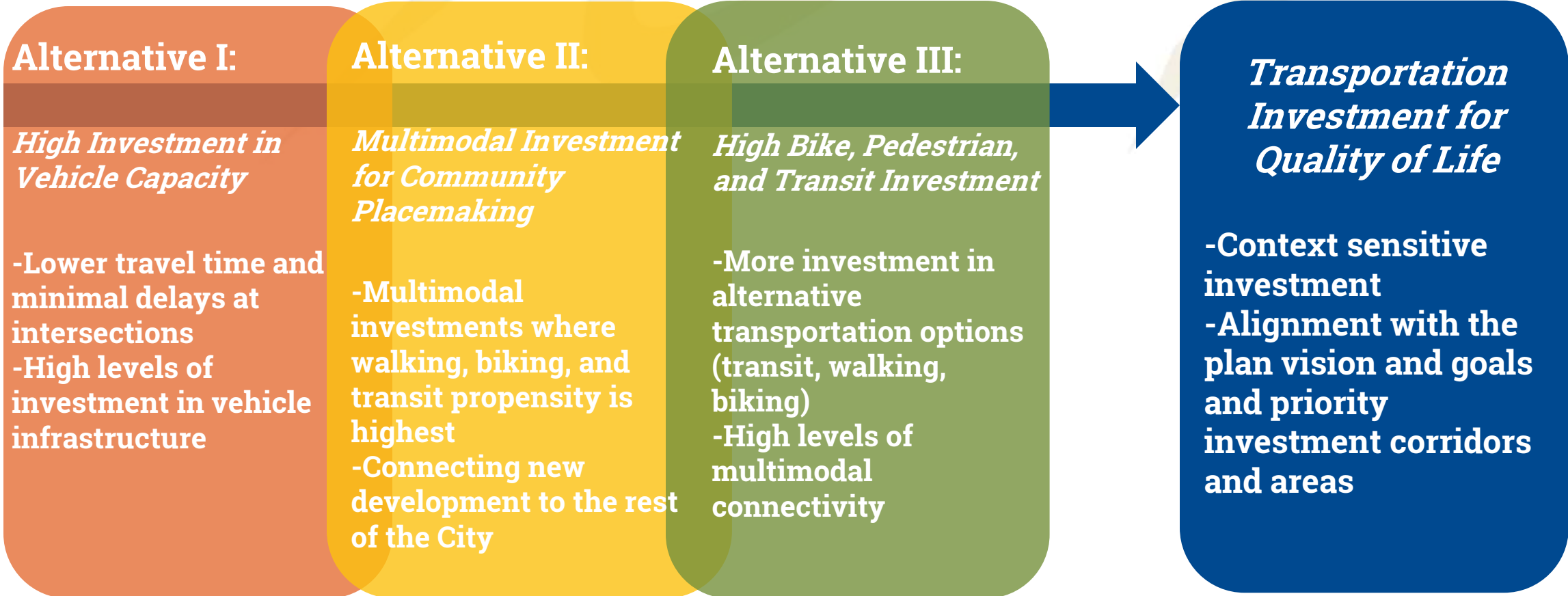
- Multimodal investments where walking, biking, and transit propensity is highest
- Connecting new development to the rest of the City

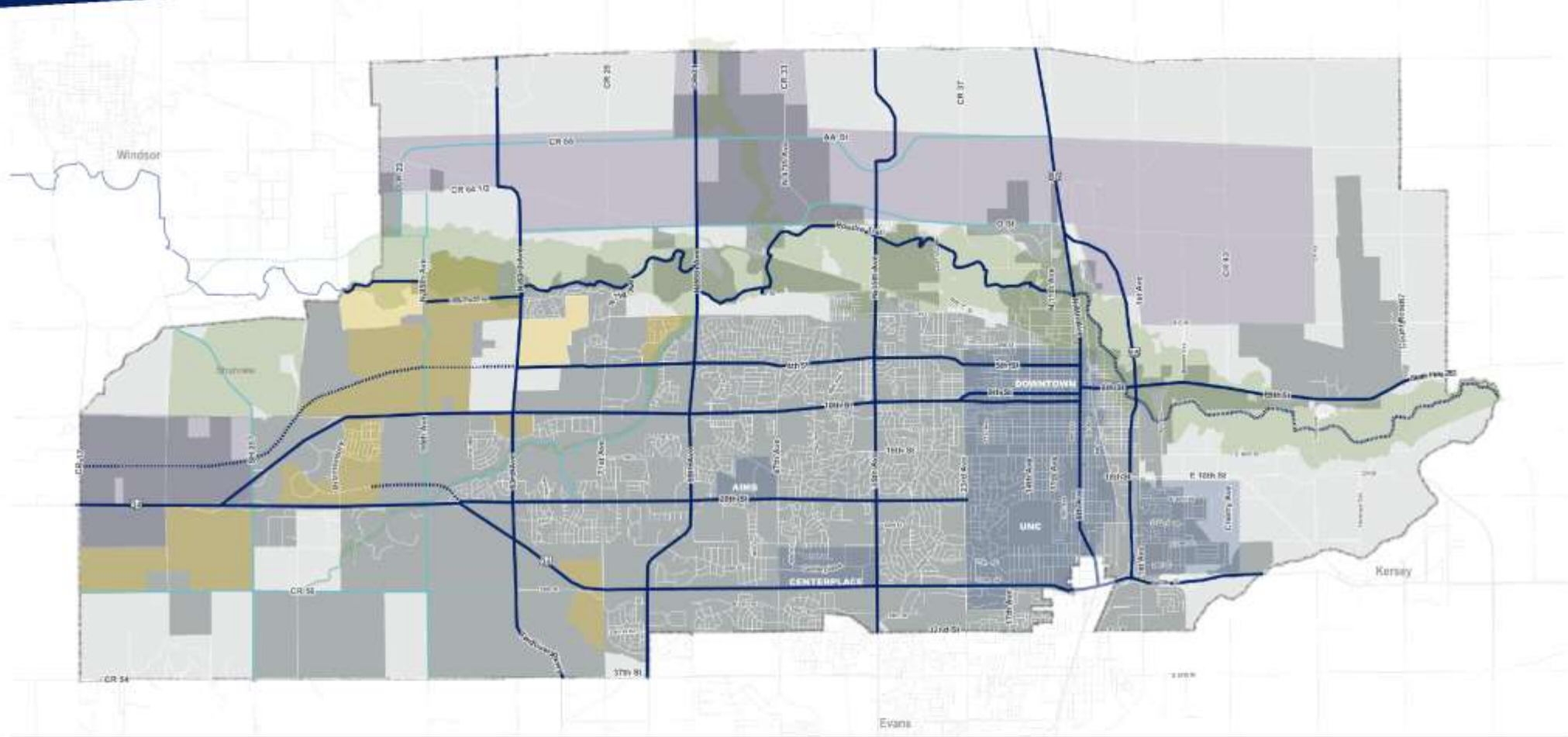
Alternative III:

Bike, Pedestrian, and Transit Investment

- More investment in alternative transportation options (transit, walking, biking)
- High levels of multimodal connectivity

Transportation Alternatives





Project Categories

STREETS

Preservation, safety improvements, traffic calming, new development and connections

PLACEMAKING

Entryways, enhanced street and intersection design to enable growth/value of surrounding land

EMERGING TECHNOLOGY

Smart signal technology, fiber, electric vehicle charging options, data sharing

MOBILITY/TRANSIT

Shared mobility, mobility hubs, flex & fixed route optimization, traveler information for on-demand and improved travel time

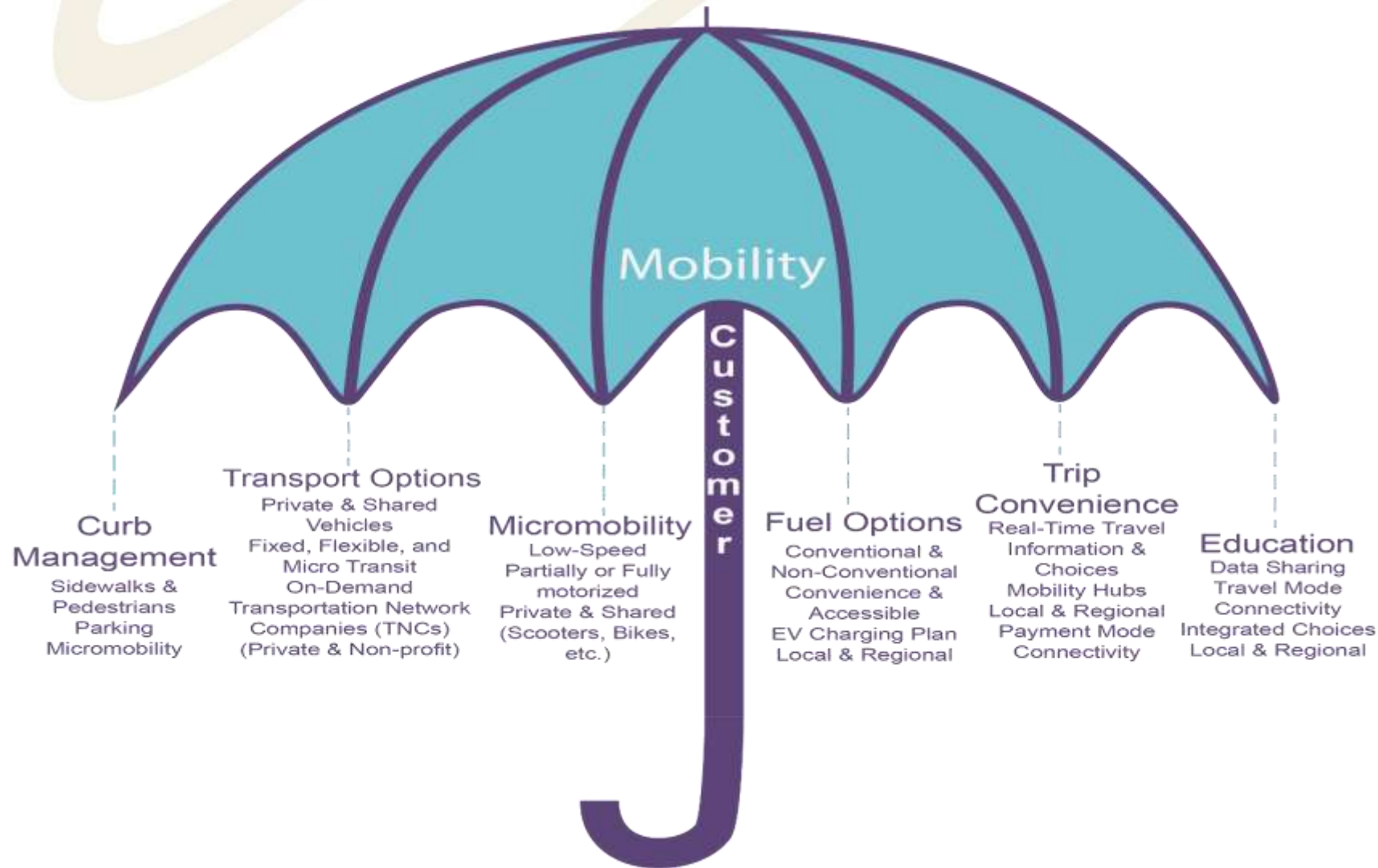
ACTIVE TRANSPORTATION

New/improved sidewalks, ADA upgrades, pedestrian safety measures, shared streets, bikes lanes, trails, neighborhood trail connections, education programs

Example Tier One

US 34 Bypass	Signal Operation Improvement	CR 17 to Hwy 85
	Regional Transit Service	Loveland to Greeley
	Mobility Hub	Centerplace
	Interchanges	35th Avenue and 47th Avenue
	Intersection Improvements	11th Avenue, 17th Avenue, 83rd Avenue, 131st Avenue

Mobility Structure



Schedule



Next Steps

- **Draft plan**
- **Public and stakeholder input on draft plan**

Thank you!

Questions?

