



Former North Weld Water Customers – Water Rates Policy Discussion

January 2023

Greeley and North Weld Agreement

- **Agreement finalized in early 2013**
- **North Weld County Water District's service area overlaps Greeley's Long Range Expected Growth Area (LREGA)**
- **Parties agreed that Greeley Water should be the water provider to simplify Greeley's land use control**
- **Defined the process for Greeley Water taking over North Weld's service area within LREGA while keeping North Weld financially "whole" through water sales**

Greeley and North Weld Agreement

- **Greeley must compensate North Weld for water assets conveyed to Greeley when system transfers occur**
 - **Staff from each water provider review pipe condition/material and negotiate value**
- **North Weld owes Greeley one C-BT unit and one Plant Investment Fee credit (1 GPM) per $\frac{3}{4}$ " tap transferred to Greeley**

Current Customer Transfer

- **Ongoing discussions with North Weld to take over water service for the Budweiser Annex plus an undetermined area outside the annexed area**
- **JB Acres subdivision (not annexed)**

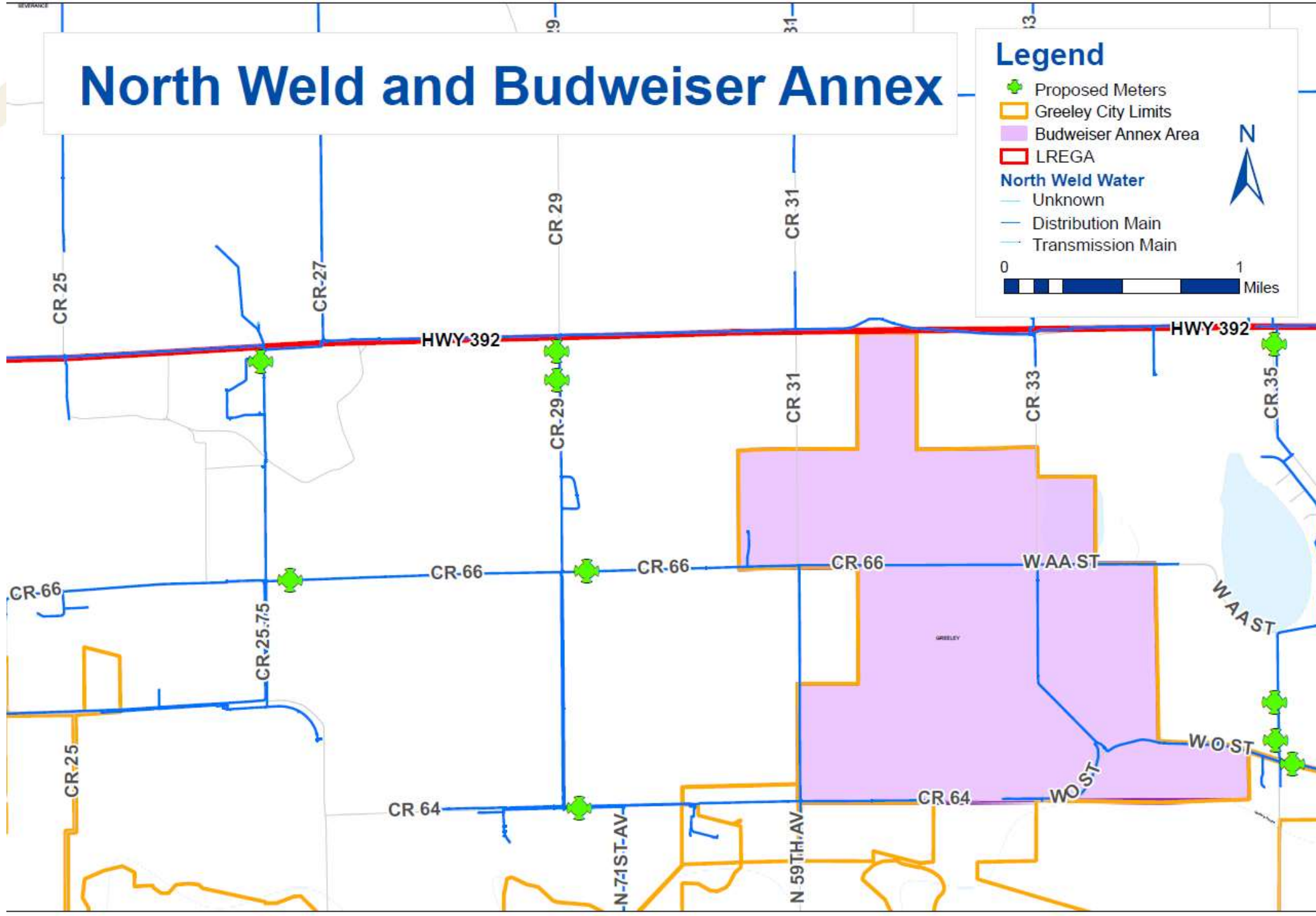
North Weld and Budweiser Annex

Legend

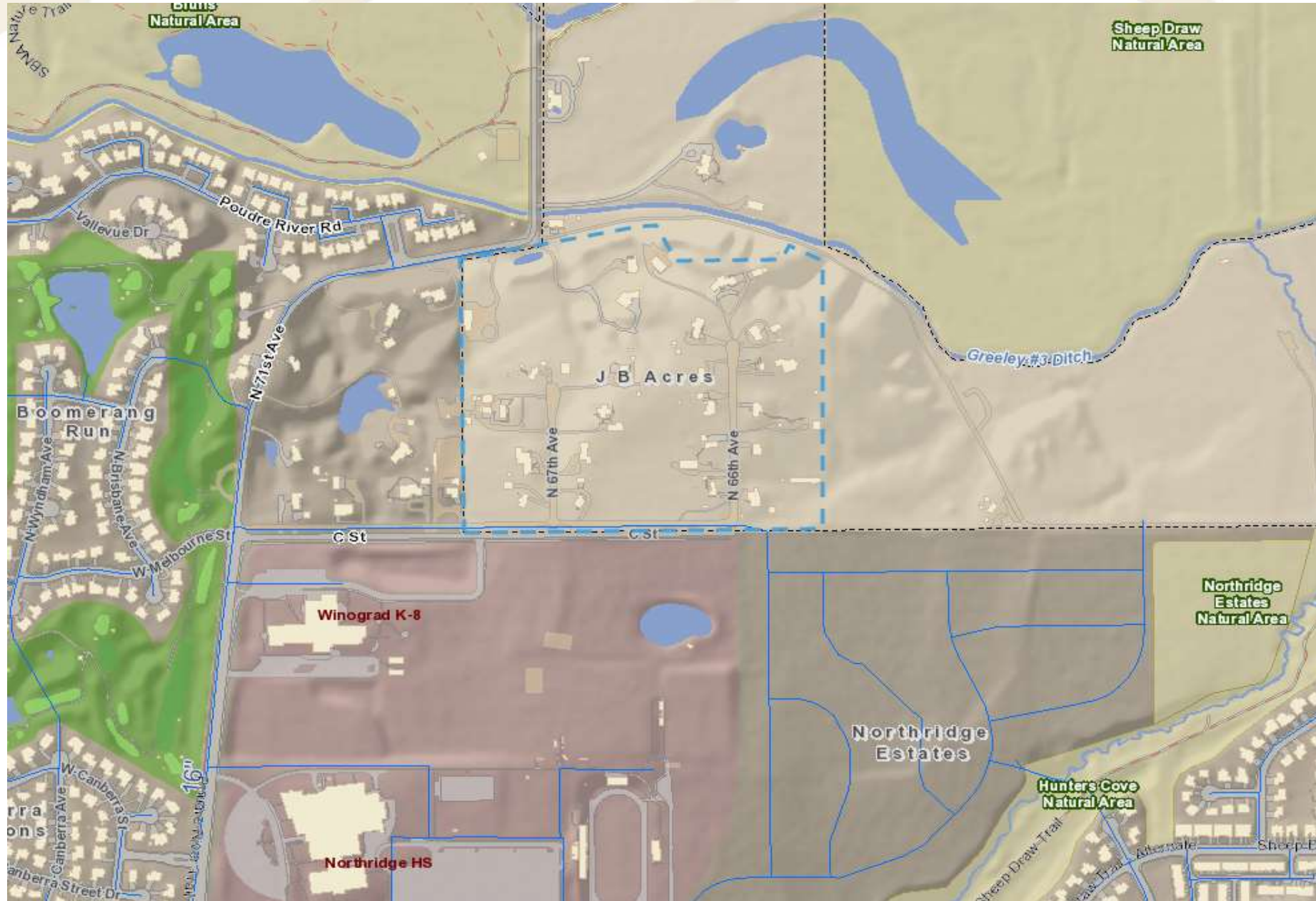
- Proposed Meters
- Greeley City Limits
- Budweiser Annex Area
- LREGA
- North Weld Water
 - Unknown
 - Distribution Main
 - Transmission Main



0 1 Miles



JB Acres



Water Rates

- **Former North Weld customers in the Budweiser Annex area will receive Inside City water rates with no action needed**
- **Former North Weld customers outside the annexed area will be charged Outside City water rates without an amendment to the Rate Resolution**



Rate/Bill Comparison

	Inside City Residential	Outside City Residential	North Weld
Service Charge	\$17.50	\$17.50	\$26.64 (includes 6 Kgals)
Rate/Kgal	\$5.39 (Tier One)	\$11.62	\$4.44
Example Bill (10 Kgals)	\$71.40	\$133.70	\$44.40
Example Bill (30 Kgals)	\$179.20	\$366.10	\$133.20

Recommendation

- **Bring an amended Rates Resolution for Board's consideration that adds a new customer class**
 - **Outside City – Former North Weld Service Area**
 - **Rates would be the same as Inside City Residential or Commercial**
 - **Residential customers would have the uniform rate until a Water Budget is developed**



Questions?

