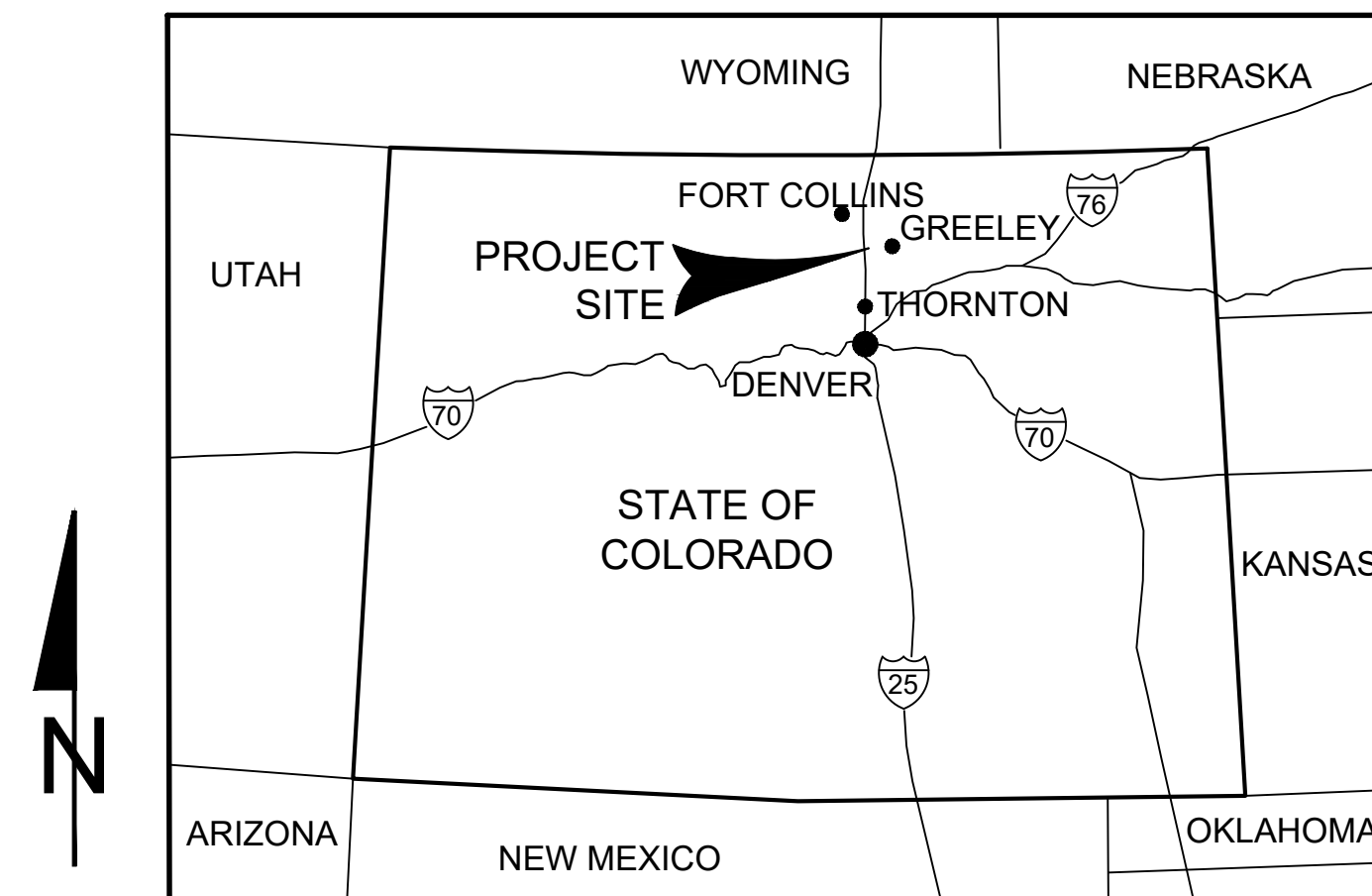
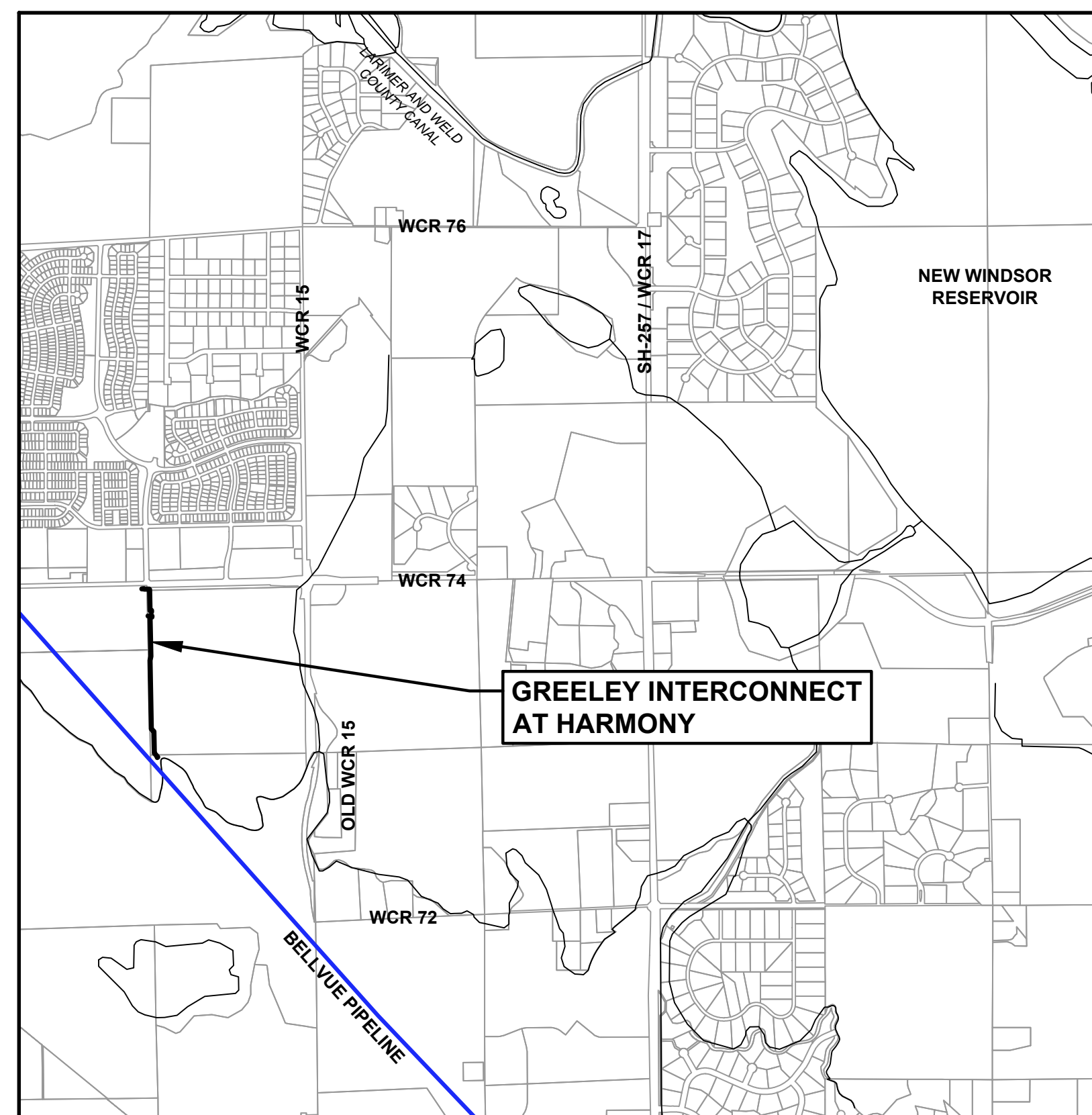


# **NORTH WELD COUNTY WATER DISTRICT**

## **GREELEY INTERCONNECT AT HARMONY**



LOCATION MAP  
SCALE: NTS



VICINITY MAP  
SCALE: 1" = 2000'

SHEET LIST		
SHEET NUMBER	SHEET TITLE	SHEET DESCRIPTION
GENERAL		
1	G-001	COVER SHEET
2	G-002	GENERAL NOTES
3	G-003	SYMBOLS AND ABBREVIATIONS
PLAN AND PROFILE - GREELEY TERRY RANCH PIPELINE		
4	PP-001	PLAN AND PROFILE STA 100+00 TO STA 111+00
5	PP-002	PLAN AND PROFILE STA 111+00 TO STA 122+00
6	PP-003	PLAN AND PROFILE STA 122+00 TO STA 132+00
CIVIL - GREELEY TERRY RANCH PIPELINE		
7	C-401	ENLARGED PLAN - BELLVUE PIPELINE CONNECTION
PLAN AND PROFILE - NWCWD INTERCONNECT		
8	PP-101	PLAN AND PROFILE - STA 100+00 TO 100+75
9	PP-201	PLAN AND PROFILE - STA 200+00 TO 204+50
10	PP-202	PLAN AND PROFILE - STA 204+50 TO 204+89.32
CIVIL - NWCWD INTERCONNECT		
11	C-501	RISER DETAIL


**IGA / PRICING SET**  
**NOT FOR CONSTRUCTION**  
**DECEMBER 28, 2022**



REVISION	DESCRIPTION OF ISSUE / REVISION	REVISED BY



**VERIFY SCALE**  
BAR IS ONE INCH ON  
ORIGINAL DRAWING



IF NOT ONE INCH ON THIS  
SHEET, ADJUST SCALES  
ACCORDINGLY



DWG: S:\2020\projects\220002\gri\060 CAD\WPB-IGA\02-sheets\220002\_NWCWD-G-000\_01.dwg  
DATE: Dec 28, 2022 3:45pm USER: imartinez  
XREFS: 220002\_GTR-WPB\_PCL 220002\_GTR-NWCWD\_BD

GENERAL NOTES:

1. PIPELINE STATIONING AND LENGTHS OF PIPE ARE BASED ON THE HORIZONTAL PROJECTION OF THE PIPE CENTERLINE AS SHOWN ON THE DRAWINGS.

2. UNLESS OTHERWISE INDICATED, PIPELINE DIAMETERS ARE FINISHED INSIDE DIAMETERS AFTER INSTALLATION OF CEMENT MORTAR LINING.

3. ALL PIPELINE ELEVATIONS ARE REFERENCED TO THE TOP OF THE PIPE UNLESS OTHERWISE NOTED.

4. AT THE CLOSE OF EACH WORKING SHIFT, WHERE THE NEXT SHIFT WILL NOT IMMEDIATELY FOLLOW, PROTECT AND SECURE OPEN EXCAVATION.

5. LOCATIONS, ELEVATIONS, AND DIMENSIONS OF EXISTING UTILITIES, STRUCTURES, AND OTHER FEATURES ARE SHOWN ACCORDING TO THE BEST INFORMATION AVAILABLE AT THE TIME OF THE PREPARATION OF THESE DRAWINGS, BUT DO NOT PURPORT TO BE ABSOLUTELY CORRECT OR ACCURATE. THE CONTRACTOR SHALL VERIFY THE LOCATIONS, ELEVATIONS, AND DIMENSIONS OF ALL EXISTING UTILITIES, STRUCTURES, AND OTHER FEATURES AFFECTING THE WORK. SHOULD THE CONTRACTOR IDENTIFY ANY UTILITIES, STRUCTURES OR FEATURES NOT SHOWN ON THE PLANS, THE CONTRACTOR SHALL NOTIFY THE ENGINEER IMMEDIATELY.

6. THE CONTRACTOR SHALL REVIEW THE SITE TO DETERMINE EXISTING CONDITIONS. ANYTHING NOT SHOWN ON THESE DRAWINGS SHALL BE BROUGHT TO THE ATTENTION OF THE ENGINEER IMMEDIATELY AND SHALL NOT CONSTITUTE AN EXTRA, UNLESS APPROVED BY THE ENGINEER.

7. CONTACT THE ENGINEER IMMEDIATELY OF ANY CONFLICTS ARISING DURING THE CONSTRUCTION OF ANY IMPROVEMENTS SHOWN ON THESE DRAWINGS.

8. TAKE ALL PRECAUTIONS NECESSARY TO PROTECT EXISTING FACILITIES. ALL SUCH IMPROVEMENTS OR STRUCTURES DAMAGED BY THE CONTRACTOR'S OPERATIONS SHALL BE IMMEDIATELY REPAIRED OR RECONSTRUCTED TO A NEW CONDITION AT THE CONTRACTOR'S EXPENSE.

9. REMOVE, REPLACE, FLAG OR RELOCATE ALL OVERHEAD INTERFERENCE WHICH MAY AFFECT THE CONTRACTOR'S OPERATION DURING CONSTRUCTION. AVOID DAMAGE TO SAME. USE EXTREME CAUTION WHEN WORKING NEAR OVERHEAD OR UNDERGROUND POWER, GAS, OR OTHER UTILITIES TO SAFELY PROTECT ALL PERSONNEL AND EQUIPMENT. THE CONTRACTOR SHALL BE RESPONSIBLE FOR ALL COSTS AND LIABILITY IN CONNECTION WITH THIS WORK.

10. COORDINATE UNDERGROUND UTILITY MARKINGS WITH EXISTING UTILITIES BY CONTACTING THE UTILITY NOTIFICATION CENTER OF COLORADO (811 OR 1-800-922-1987) A MINIMUM OF 72 HOURS PRIOR TO CONSTRUCTION OR GROUND DISTURBANCE IN ORDER TO OBTAIN LOCATES.

11. ALL UTILITIES SHALL BE KEPT IN OPERATION EXCEPT WITH THE EXPRESS WRITTEN CONSENT OF THE UTILITY OWNER. IT IS THE CONTRACTOR'S RESPONSIBILITY TO PRESERVE EXISTING UTILITIES. ANY AND ALL DAMAGE TO EXISTING UTILITIES AS A RESULT OF THE CONTRACTOR'S ACTIONS, SHALL BE REPAIRED IMMEDIATELY AT THE CONTRACTOR'S EXPENSE.

12. PRESERVE ALL SURVEY MARKERS AND MONUMENTATION. THOSE REQUIRING REMOVAL SHALL BE REESTABLISHED BY A PROFESSIONAL LAND SURVEYOR IN ACCORDANCE WITH THE LOCAL GOVERNING AUTHORITY.

13. ALL SPECIFICATIONS, DRAWINGS, AND DETAILS INCLUDED IN THE CONTRACT DOCUMENTS SHALL FULLY APPLY TO THE WORK WHETHER SPECIFICALLY REFERENCED OR NOT.

14. LIMIT CONSTRUCTION OPERATIONS TO WITHIN THE RIGHT-OF-WAY AND EASEMENTS AND DESIGNATED WORK AREAS AS SHOWN. THE CONTRACTOR SHALL BE RESPONSIBLE FOR RESTORING THE AREA WITHIN THE CONSTRUCTION LIMITS TO A RESTORED CONDITION. CONSTRUCTION LIMITS ARE DELINEATED ON THE PLAN AND PROFILE DRAWINGS.

15. THE CONTRACTOR SHALL REPLACE ALL PAVING, STABILIZED EARTH, FENCES, DRIVEWAYS, SIDEWALKS, FIELD ROADS, ETC., WITH THE SAME TYPE OF MATERIAL THAT WAS REMOVED DURING CONSTRUCTION, AS DIRECTED BY THE ENGINEER, OR AS REFERENCED IN THE SPECIFICATIONS.

16. ALL BARRICADING AND TEMPORARY TRAFFIC CONTROL DEVICES OR METHODS USED DURING CONSTRUCTION SHALL BE IN ACCORDANCE WITH FEDERAL, STATE, AND LOCAL STANDARDS. SUBMIT TRAFFIC CONTROL PLAN TO APPLICABLE AGENCIES AS REQUIRED AND OBTAIN PERMITS PRIOR TO CLOSURE OR DISRUPTION OF ANY ROADS.

17. RESTORE ALL AREAS DISTURBED BY CONSTRUCTION ACTIVITIES PER SPECIFICATION SECTIONS 01 41 00 AND 32 90 10.

18. SEE SPECIFICATION SECTIONS 01 41 00 AND 02 01 20 FOR PERMITTING, UTILITY, AND COORDINATION REQUIREMENTS AND CONTACTS.

19. ALL FUGITIVE DUST SHALL BE CONTROLLED ON SITE. ONLY AREAS SCHEDULED FOR IMMEDIATE CONSTRUCTION SHALL BE CLEARED OR STRIPPED OF VEGETATION. CLEARING OF VEGETATION SHALL ONLY PRECEDE CONSTRUCTION BY A MAXIMUM OF 2,500 FEET. WATERING OR OTHER PRIOR APPROVED MEANS OF DUST CONTROL SHALL BE EMPLOYED TO PREVENT DUST FROM LEAVING THE SITE. PERMANENT GRASSING, LANDSCAPING AND OTHER RESTORATION WORK SHALL BE INCORPORATED WITHIN 2 WEEKS OF SURFICIAL SOIL REPLACEMENT DURING THE MONTHS OF MARCH, APRIL, SEPTEMBER, AND OCTOBER.

20. ALL TREES LOCATED ALONG THE CONSTRUCTION ROUTE ARE TO REMAIN AND SHALL BE PROTECTED DURING CONSTRUCTION, UNLESS REMOVAL IS SPECIFICALLY SHOWN AND APPROVED BY THE OWNER.
21. ALL AREAS SHALL BE GRADED AND LANDSCAPED, AS INDICATED ON THE DRAWINGS, IN ACCORDANCE WITH THE SPECIFICATIONS AND AS REQUIRED BY APPLICABLE PERMITS.

22. TRAFFIC CONTROL SHALL BE THE RESPONSIBILITY OF THE CONTRACTOR.

23. ACCESS TO ALL PROPERTIES SHALL BE MAINTAINED AT ALL TIMES FOR SUPPORT SERVICE BY EMERGENCY VEHICLES.

24. DIMENSIONS OF VALVES, FITTINGS, AND OTHER EQUIPMENT MAY VARY DEPENDING UPON MANUFACTURER. CONTRACTOR SHALL REVIEW SHOP DRAWINGS AND MAKE ANY NECESSARY ADJUSTMENTS BEFORE SETTING BASES, SUPPORTS, ETC.

25. ALL ALUMINUM SURFACES IN CONTACT WITH CONCRETE OR OTHER METALS SHALL HAVE A HEAVY BITUMASTIC COATING OR NEOPRENE INSULATING MATERIAL TO PREVENT CORROSION.

26. WHERE NECESSARY TO DEFLECT PIPE, EITHER HORIZONTALLY OR VERTICALLY, PIPE JOINT DEFLECTION SHALL NOT EXCEED 75% OF THE MANUFACTURERS RECOMMENDED DEFLECTION ANGLE, OR AS NOTED IN THE SPECIFICATIONS.

27. IN ACCORDANCE WITH THE GENERAL CONDITIONS AND GENERAL REQUIREMENTS SECTIONS OF THE CONTRACT DOCUMENTS, VIOLATION OF ANY AND ALL ENVIRONMENTAL REGULATIONS AND PERMIT CONDITIONS IS NOT PERMITTED AND WILL RESULT IN CONTRACTOR PAYMENT OF LIQUIDATED DAMAGES.

28. EXCAVATION WITHIN ESTABLISHED LIMITS OF CONSTRUCTION SHALL BE ACCOMPLISHED BY STRIPPING THE EXISTING DEPTH OF TOPSOIL FROM THE FULL WIDTH OF THE AREA TO BE DISTURBED AND STOCKPIILING THE SURFICIAL SOILS (TOPSOIL) SEPARATELY. THE REMAINING EXCAVATIONS NECESSARY FOR PIPE INSTALLATION SHALL BE TEMPORARILY PLACED ADJACENT TO THE PIPE TRENCH. THE EXCAVATED MATERIAL THAT WILL NOT BE REUSED FOR BACKFILL SHALL BE STOCKPILED SEPARATELY FROM SURFICIAL SOILS OUTSIDE OF JURISDICTIONAL AREAS A MINIMUM DISTANCE OF 200 FEET FROM A WETLAND. BACKFILLING OPERATIONS SHALL PROCEED SUCH THAT SURFICIAL SOILS WILL BE REPLACED LAST AND SHALL BE SPREAD ACROSS THE ENTIRE DISTURBED AREA TO HELP PROMOTE NATIVE VEGETATIVE GROWTH. SURFICIAL SOILS SHALL NOT BE LEFT STOCKPILED IN EXCESS OF TWO WEEKS. FINE GRADING AND THE REPLACEMENT OF TOPSOIL SHALL OCCUR IMMEDIATELY AND SHALL NOT LAG CONSTRUCTION BY MORE THAN 500 FEET. ALL WETLAND CROSSINGS THAT ARE DISTURBED DURING CONSTRUCTION, SHALL HAVE AN ADEQUATE AMOUNT OF FILL REMOVED SO THAT THE WETLAND IS RESTORED TO THE ORIGINAL LINE, GRADE, AND CROSS-SECTION AS INDICATED BY THESE DRAWINGS.

29. ALL DELETERIOUS SUBSURFACE MATERIAL, E.G., MUCK, PEAT, BURIED DEBRIS, SHALL BE EXCAVATED IN ACCORDANCE WITH THE PLANS AND SPECIFICATIONS, OR AS DIRECTED BY THE ENGINEER. DELETERIOUS MATERIAL IS TO BE REMOVED FROM THE SITE IMMEDIATELY AND PROPERLY DISPOSED OF AT THE CONTRACTOR'S EXPENSE. EXCAVATED AREAS ARE TO BE BACKFILLED WITH APPROVED MATERIALS AND COMPACTED AS SHOWN ON THESE PLANS.

30. PROTECT EXCAVATIONS AGAINST COLLAPSE AND PROVIDE BRACING, SHEETING, OR SHORING AS NECESSARY. TRENCHES SHALL BE KEPT COMPLETELY DRY WHILE PIPE AND APPURTENANCES ARE BEING PLACED PER SPECIFICATION SECTION 31 23 43. CONTRACTOR SHALL BE RESPONSIBLE FOR DEWATERING AND PERMITTING OF DISCHARGE FLOWS IN ACCORDANCE WITH THE SPECIFICATIONS.

31. PROVIDE A ¾" TO 1" BITUMINOUS EXPANSION JOINT MATERIAL WITH SEALER AT ABUTMENT OF CONCRETE AND OTHER MATERIALS (ASPHALT, BUILDING, OTHER POURED CONCRETE, ETC.)

32. TRIM, TACK, AND MATCH EXISTING PAVEMENT AT LOCATIONS WHERE NEW PAVEMENT IS TO BE INSTALLED.

33. PROVIDE EROSION CONTROL/SEDIMENTATION BARRIER (SILT FENCE) WHERE INDICATED ON THE EROSION AND SEDIMENT CONTROL DRAWINGS TO PREVENT SILT FROM MIGRATING TO ADJACENT PROPERTIES, STREETS, STORM SEWERS AND WATERWAYS. IN ADDITION, CONTRACTOR SHALL PLACE AND MAINTAIN TRACKING CONTROL PADS AT ALL LOCATIONS WHERE CONSTRUCTION RELATED TRAFFIC IS TO ENTER AND EXIT THE SITE.

IGA / PRICING SET  
NOT FOR CONSTRUCTION  
DECEMBER 28, 2022

PROVIDENCE INFRASTRUCTURE CONSULTANTS  
300 PLAZA DR., SUITE 320  
HIGHLANDS RANCH, CO 80129  
(303)997-5035  
www.providenceic.com



REYNOLDS CONSTRUCTION, LLC  
1775 E 69TH AVE  
DENVER, CO 80229  
(303) 287-7700  
www.reynoldscon.com

REVISION	DESCRIPTION OF ISSUE / REVISION	REVISED BY



VERIFY SCALE  
BAR IS ONE INCH ON  
ORIGINAL DRAWING  
IF NOT ONE INCH ON THIS  
SHEET, ADJUST SCALES  
ACCORDINGLY

NORTH WELD COUNTY  
WATER DISTRICT  
GREELEY INTERCONNECT  
AT HARMONY

GENERAL NOTES

PROJECT:	220002
DRAWN BY:	B. BOHN
DESIGNED BY:	D. PYTLIK
APPROVED BY:	D. PYTLIK
SHEET:	2 OF 11

DRAWING: G-002



LEGEND:

GENERAL

EXISTING *ITALICIZED TEXT DENOTES EXISTING EQUIPMENT, STRUCTURES, PIPING, ETC.*

PROPOSED **BOLD LINEWORK AND TEXT DENOTES PROPOSED EQUIPMENT, STRUCTURES, PIPING, ETC.**

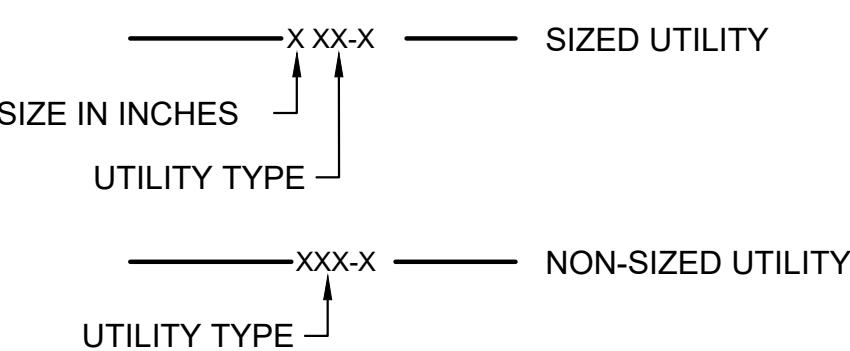
SYMBOLS

- ◆ SECTION CORNER AS DESCRIBED
- ◆ RANGE POINT AS DESCRIBED
- MONUMENT FOUND AS DESCRIBED
- MONUMENT SET AS DESCRIBED
- (D) DENOTES DEEDED INFORMATION
- (P) DENOTES PLATTED INFORMATION
- (M) DENOTES MEASURED INFORMATION
- ⌘ EXISTING GAS VALVE
- ⌘ EXISTING WATER VALVE
- ⌘ EXISTING WATER METER
- ⌘ EXISTING ELECTRIC HANDHOLE
- ⌘ EXISTING TELEPHONE PEDESTAL
- ⌘ EXISTING FIBER PEDESTAL
- ⌘ EXISTING SEWER MANHOLE
- ⌘ EXISTING VENT PIPE
- ⌘ EXISTING STORM MANHOLE
- ⌘ EXISTING WATER MANHOLE
- ⌘ EXISTING FIRE HYDRANT
- ⌘ EXISTING YARD HYDRANT
- ⌘ EXISTING COMMUNICATION MH
- ⌘ EXISTING ELECTRIC MANHOLE
- ⌘ EXISTING CABLE TV PEDESTAL
- ⌘ EXISTING GAS METER
- ⌘ EXISTING ELECTRIC METER
- ⌘ EXISTING TRAFFIC SIGNAL
- ⌘ EXISTING GREASE MANHOLE
- ⌘ EXISTING IRRIGATION VALVE
- ⌘ EXISTING ELECTRIC PEDESTAL
- ⌘ EXISTING CLEAN OUT
- ⌘ EXISTING TRAFFIC HANDHOLE
- EXISTING UTILITY HANDHOLE
- EXISTING BOLLARD/POST
- EXISTING LANDSCAPE LIGHT
- ⌘ EXISTING UTILITY POLE
- EXISTING GUY WIRE
- ☀ EXISTING STREET LIGHTPOLE
- ⌘ EXISTING DECIDUOUS TREE
- ⌘ EXISTING EVERGREEN TREE
- ⌘ EXISTING BUSH
- ⌘ EXISTING TREE STUMP
- ⌘ EXISTING MAILBOX
- ⌘ EXISTING SIGN
- L/S LANDSCAPED AREA
- ⌘ EXISTING TRAFFIC LIGHT
- ⌘ EXISTING MONITORING WELL

LINETYPES

- — — — — DRAINAGE FLOWLINE
- 5050 — EXISTING INDEX CONTOUR
- 5051 — EXISTING INTERMEDIATE CONTOUR
- + + + + + EXISTING WIRE FENCE
- x x x x x EXISTING SPLIT RAIL FENCE
- o o o o o EXISTING CHAIN LINK FENCE
- o o o o o EXISTING METAL/WOOD FENCE
- — — — — EDGE OF BUSHES/TREES
- — — — — EXISTING BUILDING/STRUCTURE
- LOC — LIMITS OF CONSTRUCTION
- — — — — EASEMENT, TEMPORARY OR PERMANENT
- - - - - RIGHT-OF-WAY
- - - - - SECTION LINE
- - - - - PROPERTY LINE
- 100 FP — 100 YEAR FLOODPLAIN

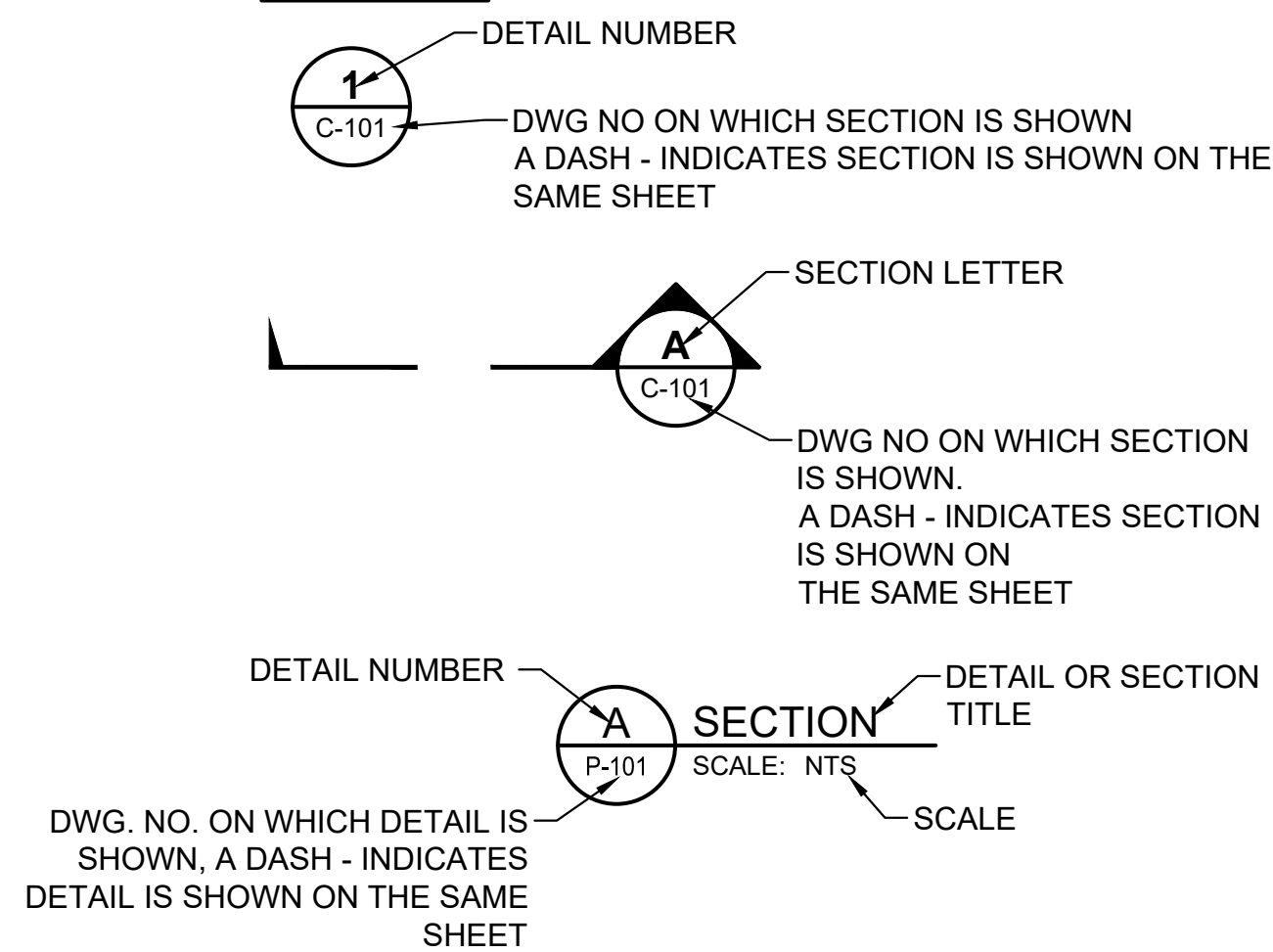
UTILITY LINETYPES



TYPE

- CATV = CABLE TV
- DR = DRAIN
- FM = FORCE MAIN
- FO = FIBER OPTIC
- G = GAS
- GS = GAS SERVICE
- IRR = IRRIGATION
- OHE = OVERHEAD ELECTRICAL
- OHT = OVERHEAD TELEPHONE
- OHU = OVERHEAD UTILITY
- PW = POTABLE WATER
- SD = STORM DRAIN
- SS = SANITARY SEWER
- E = UNDERGROUND ELECTRIC
- T = UNDERGROUND TELEPHONE
- W = WATER
- WM = WATER MAIN
- WS = WATER SERVICE

REFERENCE



HATCH TYPES

- UNDISTURBED SOIL
- EARTH FILL
- RIPRAP
- RIPRAP BEDDING
- CONCRETE
- NATIVE MATERIAL
- ASPHALT
- SAND FILTER/DIRT/ DRAIN MATERIAL/GRAVEL
- WETLANDS
- GRAVEL

ABBREVIATIONS:

AC	ASPHALT CONCRETE, ACRE
ACP	ASBESTOS CEMENT PIPE
ACS	ACCESS
ALT	ALTERNATE
ALUM	ALUMINUM
APX, APPROX	APPROXIMATE
ASSY	ASSEMBLY
AWG	AMERICAN WIRE GAUGE
AWWA	AMERICAN WATER WORKS ASSOCIATION
B, BOT	BOTTOM
BO	BLOWOFF
BF	BLIND FLANGE
BFLY	BUTTERFLY
BFV	BUTTERFLY VALVE
BH	BORE HOLE
BLK	BLOCK
BMP	BEST MANAGEMENT PRACTICE
CARV	COMBINATION AIR/VACCUUM VALVE ASSEMBLY
CATV	CABLE TV
CDOT	COLORADO DEPT. OF TRANSPORTATION
CB	CROSSING BORING
CI	CAST IRON
CL	CENTERLINE
CTL	CTL THOMPSON (GEOTECHNICAL ENGINEERING FIRM)
CLSM	CONTROLLED LOW STRENGTH MATERIAL
CMP	CORRUGATED METAL PIPE
COMM	COMMUNICATION
CONC	CONCRETE
CONN	CONNECTION
CONST	CONSTRUCTION
CONT	CONTINUOUS, CONTINUATION
COG	CITY OF GREELEY
CP	CONTROL POINT, CATHODIC PROTECTION
CPLG	COUPLING
CPP	CORRUGATED PLASTIC PIPE
CYL	CYLINDER
DI	DUCTILE IRON
DIA, Ø	DIAMETER
DIP	DUCTILE IRON PIPE
DNF	DID NOT FIND
DNPH	DID NOT POTHOLE
DR	DRIVE, DRAIN
DTL	DETAIL
DWLJ	DOUBLE WELDED LAP JOINT
E	EAST, EASTING, ELECTRIC
EA	EACH
EC	EROSION CONTROL
ECB	EROSION CONTROL BLANKET
ECMP	ELLIPTICAL CORRUGATED METAL PIPE
EL, ELEV	ELEVATION
ELEC	ELECTRIC
EQ	EQUAL
ESC	EROSION & SEDIMENTATION CONTROL
EX	EXISTING
EXT	EXTENSION
FB	FIELD BORING
FIK	FLANGE INSULATING KIT
FL	FLOW LINE, FLANGE
FLG'D	FLANGED
FM	FORCE MAIN
FO	FIBER OPTIC
FRP	FIBERGLASS REINFORCED PLASTIC
FT	FOOT, FEET
G	GAS
GA	GAUGE
GALV	GALVANIZED
GBR	GEOTECHNICAL BASELINE REPORT
GDR	GEOTECHNICAL DATA REPORT
GS	GAS SERVICE
GV	GATE VALVE
GW	GROUNDWATER
HCBO	HIGH CAPACITY BLOW OFF
HD	HEAVY DUTY

HDPE	HIGH DENSITY POLYETHYLENE
HGL	HYDRAULIC GRADE LINE
HWY	HIGHWAY
ID	INSIDE DIAMETER
IN	INCH
INV	INVERT
IRR	IRRIGATION
JTS	JOINTS
L	LENGTH
LB/LBS	POUND(S)
LD	LIGHT DUTY
LF	LINEAR/LINEAL FOOT/FEET
LOC	LIMITS OF CONSTRUCTION
MAX	MAXIMUM
MFR	MANUFACTURER
MH	MANHOLE
MIN	MINIMUM
MJ	MECHANICAL JOINT
MW	MONITORING WELL (GROUNDWATER), MANWAY
N	NORTH, NORTHING
NGS	NATIONAL GEODETIC SURVEY
NIC	NOT IN CONTRACT
NOM	NOMINAL
NPT	NATIONAL PIPE THREAD
NTS	NOT TO SCALE
OC	ON CENTER
OD	OUTSIDE DIAMETER
OHE	OVERHEAD ELECTRIC
OHT	OVERHEAD TELEPHONE
OHU	OVERHEAD UTILITY
OPNG	OPENING
OPR	OPERATOR
OZ	OUNCE
PB	PIPELINE BORING
PC	PRESSURE CLASS
PE	PERMANENT EASEMENT
PL	PROPERTY LINE, PLATE
PRV	PRESSURE REDUCING VALVE
PSI	POUNDS PER SQUARE INCH
PVC	POLYVINYL CHLORIDE
PVI	POINT OF VERTICAL INTERSECTION
PW	POTABLE WATER
R	RADIUS
R/W, ROW	RIGHT OF WAY
RCP	REINFORCED CONCRETE PIPE
REINF	REINFORCED/REINFORCEMENT
REQ'D	REQUIRED
RHW	WIRE INSULATION (MOISTURE RESISTANT)
RPMP	REINFORCED PLASTIC MORTAR PIPE
RR	RAILROAD
RW	RESILIENT WEDGE
S	SOUTH
SD	STORM DRAIN
SH	STATE HIGHWAY
SIM	SIMILAR
SPEC	SPECIFICATION
SQ	SQUARE
SS, SAN	SANITARY SEWER
ST	STAINLESS
STA	STATION
STD	STANDARD
STL	STEEL
STM	STORM
STRUCT	STRUCTURE
SWLJ	SINGLE WELDED LAP JOINT
SWMP	STORMWATER MANAGEMENT PLAN
SWR	SEWER
SY	SQUARE YARD(S)
t	THICKNESS
T	TOP, TELEPHONE
T/	TOP OF
TCE	TEMPORARY CONSTRUCTION EASEMENT
TEL	TELEPHONE
TEMP	TEMPORARY

TH	TEST HOLE (SOIL BORING)
TYP	TYPICAL
UG	UNDERGROUND
VCP	VITRIFIED CLAY PIPE
VERT	VERTICAL
W, WTR	WEST, WATER
W/	WITH
WCR	WELD COUNTY ROAD
WE	WATERLINE EASEMENT
WM	WATER MAIN
WL	WATER LINE
WPA	WORK PACKAGE A
WS	WATER SERVICE
WSP	WELDED STEEL PIPE
WT	WEIGHT
WWF	WELDED WIRE FABRIC

IGA / PRICING SET  
NOT FOR CONSTRUCTION  
DECEMBER 28, 2022

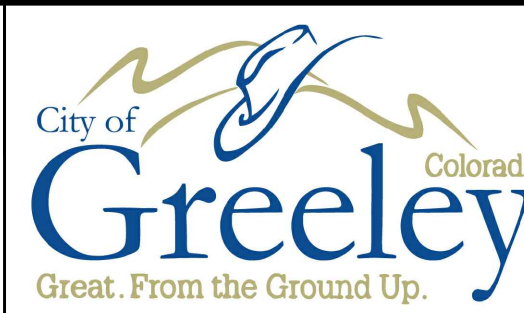
PROVIDENCE INFRASTRUCTURE CONSULTANTS  
300 PLAZA DR., SUITE 320  
HIGHLANDS RANCH, CO 80129  
(303)997-5035  
www.providenceic.com



REYNOLDS CONSTRUCTION, LLC  
1775 E 69TH AVE  
DENVER, CO 80229  
(303) 287-7700  
www.reynoldscon.com



REVISION	DESCRIPTION OF ISSUE / REVISION	REVISED BY



VERIFY SCALE  
BAR IS ONE INCH ON  
ORIGINAL DRAWING  
IF NOT ONE INCH ON THIS  
SHEET, ADJUST SCALES  
ACCORDINGLY

NORTH WELD COUNTY  
WATER DISTRICT  
GREELEY INTERCONNECT  
AT HARMONY

SYMBOLS AND ABBREVIATIONS

PROJECT:	220002
DRAWN BY:	B. BOHN
DESIGNED BY:	D. PYTLIK
APPROVED BY:	D. PYTLIK
SHEET:	3 OF 11
DRAWING:	G-003





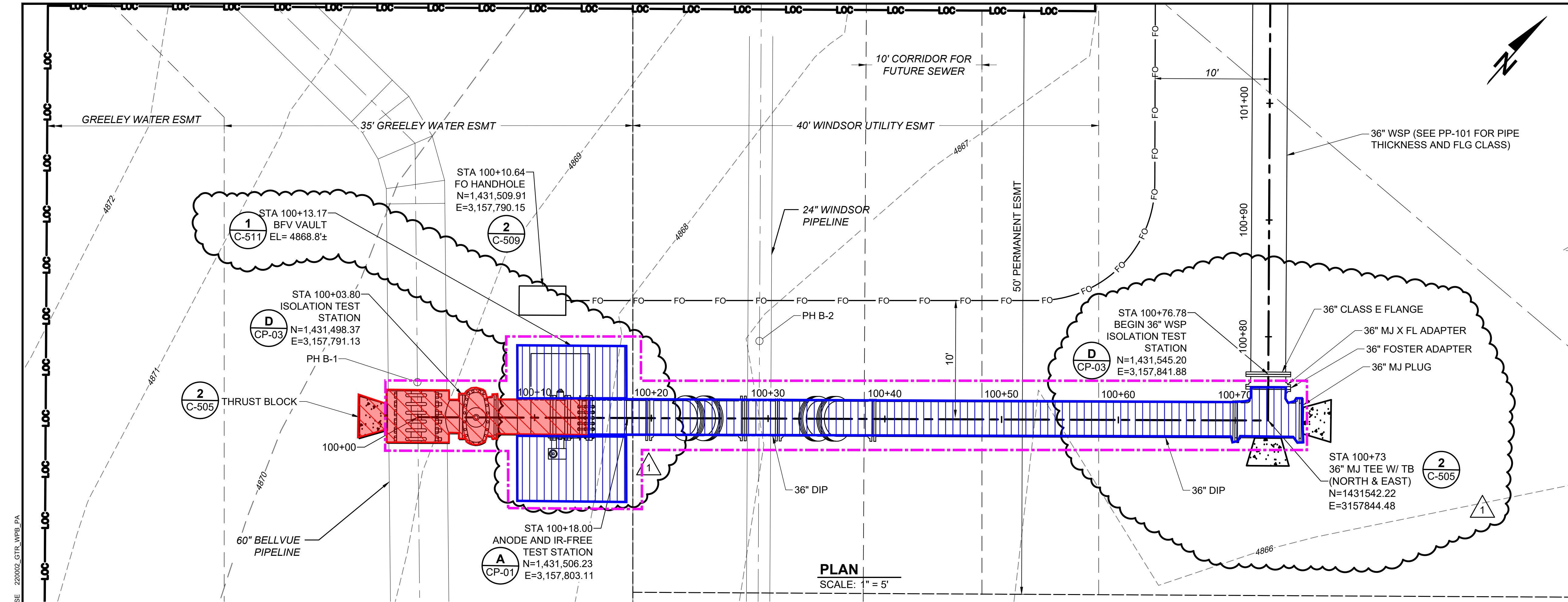






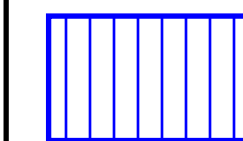






NOTES:

1. SEE SPEC SECTION 01 41 10 AND 32 90 10 FOR PROPERTY-SPECIFIC NOTES AND RESTORATION REQUIREMENTS.



THE CITY OF GREELEY WILL BE RESPONSIBLE TO REIMBURSE NORTH WELD COUNTY WATER DISTRICT FOR MATERIAL COSTS ASSOCIATED WITH THE DUCTILE IRON PIPE AND ASSOCIATED FITTINGS / APPURTENANCES FROM THE DISMANTLING JOINT IN THE VAULT NORTH TO, AND INCLUDING, THE 36" TEE. THE REIMBURSEMENT WILL ALSO INCLUDE THE PRE-CAST CONCRETE VAULT.

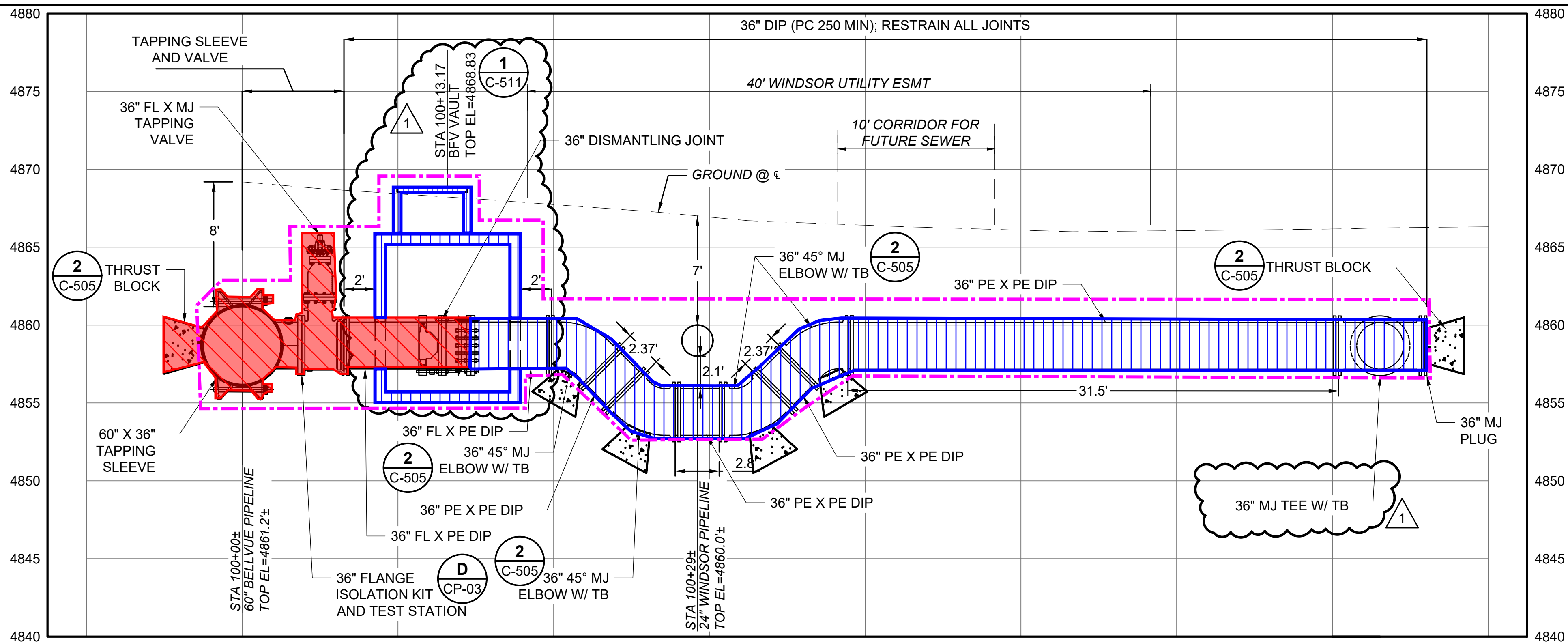


NORTH WELD COUNTY WATER DISTRICT WILL BE RESPONSIBLE FOR COSTS ASSOCIATED WITH MATERIALS AND INSTALLATION FROM THE CONNECTION TO THE 60" BELLVUE PIPELINE THROUGH THE DISMANTLING JOINT. NORTH WELD COUNTY WATER DISTRICT RESPONSIBILITIES EXCLUDE PROVIDING THE BUTTERFLY VALVE AS THE VALVE WILL BE PROVIDED AT A LATER DATE UNDER REYNOLDS CONSTRUCTION'S TERRY RANCH CONTRACT.



NORTH WELD COUNTY IS 'EARLY' PROCURING ALL MATERIALS NEEDED FOR THE INSTALLATION SHOWN WITHIN THESE LIMITS WITH THE EXCEPTION OF THE BUTTERFLY VALVE AS THE VALVE WILL BE PROVIDED BY THE CITY OF GREELEY AT A LATER DATE. ALL WORK SHOWN WITHIN THESE LIMITS WILL BE PERFORMED BY REYNOLDS CONSTRUCTION INCLUDING WET TAPPING THE 60" BELLVUE LINE (VIA SUBCONTRACT). ALL FACILITIES WITHIN THESE LIMITS WILL BE OWNED, OPERATED, AND MAINTAINED BY THE CITY OF GREELEY

**IGA / PRICING SET**  
**NOT FOR CONSTRUCTION**  
**JANUARY 11, 2023**



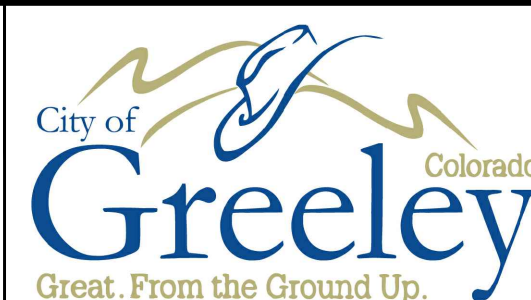
PROVIDENCE INFRASTRUCTURE CONSULTANTS  
300 PLAZA DR, SUITE 320  
HIGHLANDS RANCH, CO 80129  
(303)997-5035  
www.providenceic.com



REYNOLDS CONSTRUCTION, LLC  
1775 E 69TH AVE  
DENVER, CO 80229  
(303) 287-7700  
www.reynoldscon.com



REVISION	DESCRIPTION OF ISSUE / REVISION	REVISED BY



VERIFY SCALE  
BAR IS ONE INCH ON  
ORIGINAL DRAWING  
IF NOT ONE INCH ON THIS  
SHEET, ADJUST SCALES  
ACCORDINGLY

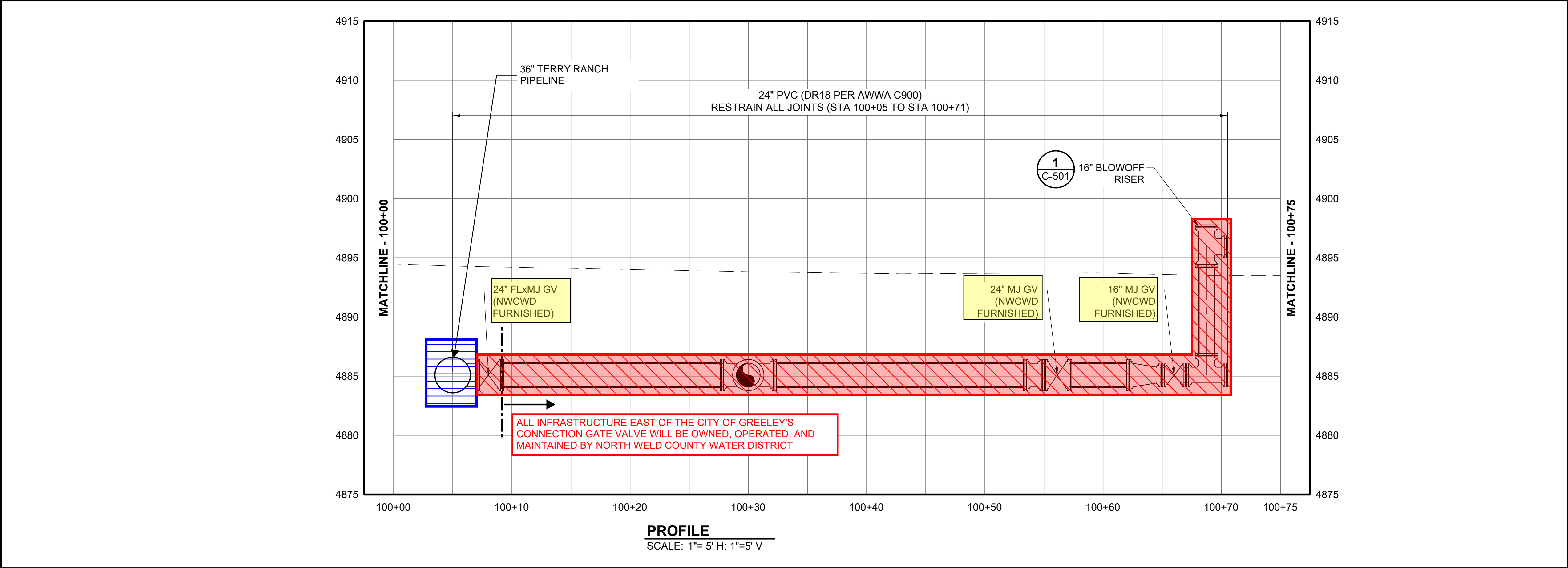
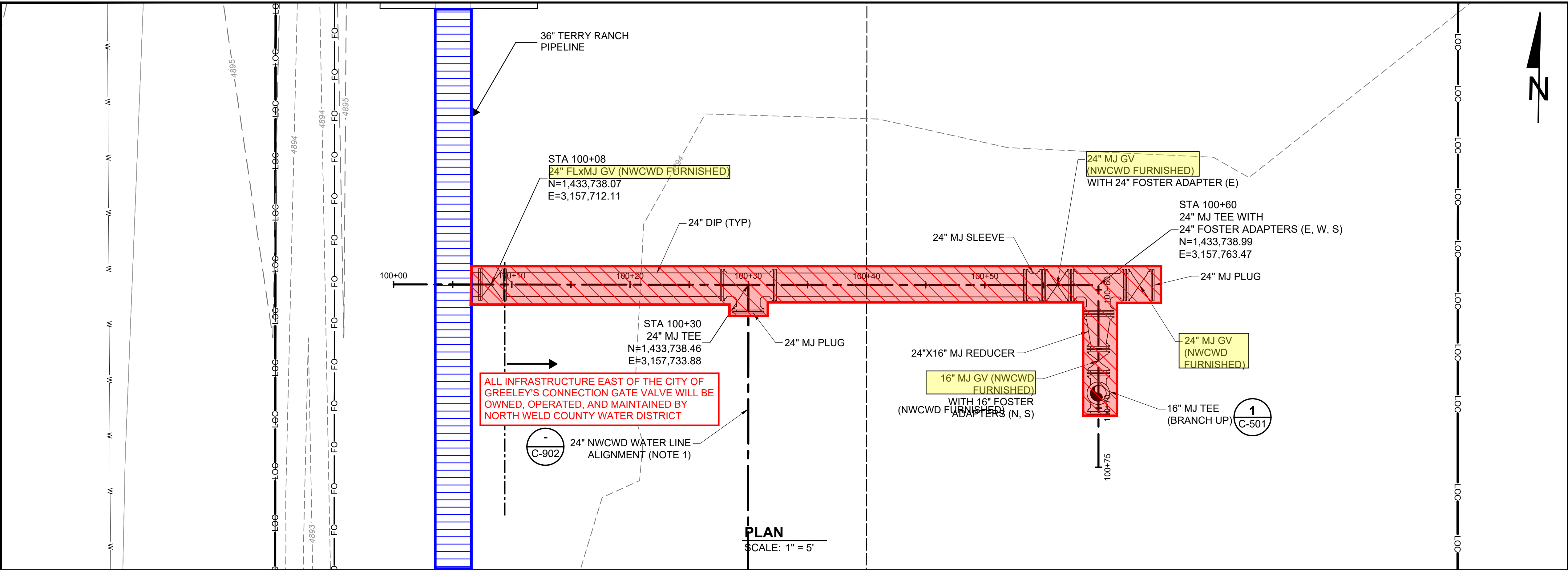
NORTH WELD COUNTY  
WATER DISTRICT  
  
GREELEY INTERCONNECT  
AT HARMONY

ENLARGED PLAN - BELLVUE PIPELINE  
CONNECTION

PROJECT:	220002
DRAWN BY:	B. BOHN
DESIGNED BY:	D. PYTLIK
APPROVED BY:	D. PYTLIK
SHEET:	7 OF 11
DRAWING:	C-401

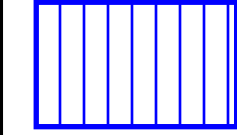


DWG: S:\2000\Projects\220002\GTR\100 CAD\WPB\ICA02-SHEETS\220002\_NWCWD-PP-101\_01.dwg  
DATE: Dec 28, 2022 3:03pm  
XREFS: 220002\_GTR\_WPB\_UT 220002\_GTR\_WPB\_ESMT 220002\_GTR\_WPB\_PA 220002\_GTR\_WPB\_SV 220002\_GTR\_WPB\_AERL 220002\_GTR\_WPB\_P-BASE 220002\_GTR\_WPB\_P-BASE 220002\_GTR\_NWCWD\_P-BASE 220002\_GTR\_NWCWD\_SD  
USER: drcs

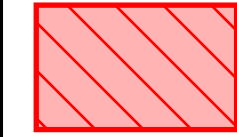


**NOTES:**

1. CONTINGENCY PIPELINE TO BE CONSTRUCTED ONLY IN THE EVENT THAT THE GREELEY 36" WSP PIPELINE DOES NOT ARRIVE TIMELY.



THE CITY OF GREELEY AND THE NORTH WELD COUNTY WATER DISTRICT WILL BENEFIT FROM THE USE OF THE 36" TERRY RANCH PIPELINE. THE CITY OF GREELEY WILL BE RESPONSIBLE FOR MATERIAL AND LABOR COSTS ASSOCIATED WITH THE INSTALLATION OF THE PIPELINE WITHIN THESE LIMITS. ALL FACILITIES WITHIN THESE LIMITS AND THE GATE VALVE AT STATION 100+08 (CONNECTION VALVE) WILL BE OWNED, OPERATED, AND MAINTAINED BY THE CITY OF GREELEY



NORTH WELD COUNTY WATER DISTRICT WILL BE RESPONSIBLE FOR COSTS ASSOCIATED WITH MATERIALS AND INSTALLATION OF INFRASTRUCTURE WITHIN THESE LIMITS. ALL WORK SHOWN WITHIN THESE LIMITS WILL BE PERFORMED BY REYNOLDS CONSTRUCTION UNDER THE TERRY RANCH PIPELINE CONSTRUCTION CONTRACT. ALL MATERIALS WILL BE PROVIDED BY REYNOLDS CONSTRUCTION WITH THE EXCEPTION OF FOUR (4) 16- TO 24-INCH GATE VALVES (HIGHLIGHTED). ALL FACILITIES WITHIN THESE LIMITS WITH THE EXCEPTION OF THE 24" GATE VALVE AT STATION 100+08 (CONNECTION VALVE) WILL BE OWNED, OPERATED, AND MAINTAINED BY NORTH WELD COUNTY WATER DISTRICT.

**IGA / PRICING SET  
NOT FOR CONSTRUCTION  
JANUARY 11, 2023**

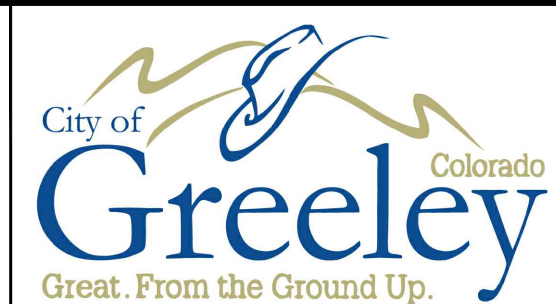
**PROVIDENCE INFRASTRUCTURE CONSULTANTS**  
300 PLAZA DR., SUITE 320  
HIGHLANDS RANCH, CO 80129  
(303)997-5035  
www.providenceic.com



**REYNOLDS CONSTRUCTION, LLC**  
1775 E 69TH AVE  
DENVER, CO 80229  
(303) 287-7700  
www.reynoldskon.com



REVISION	DESCRIPTION OF ISSUE / REVISION	REVISED BY



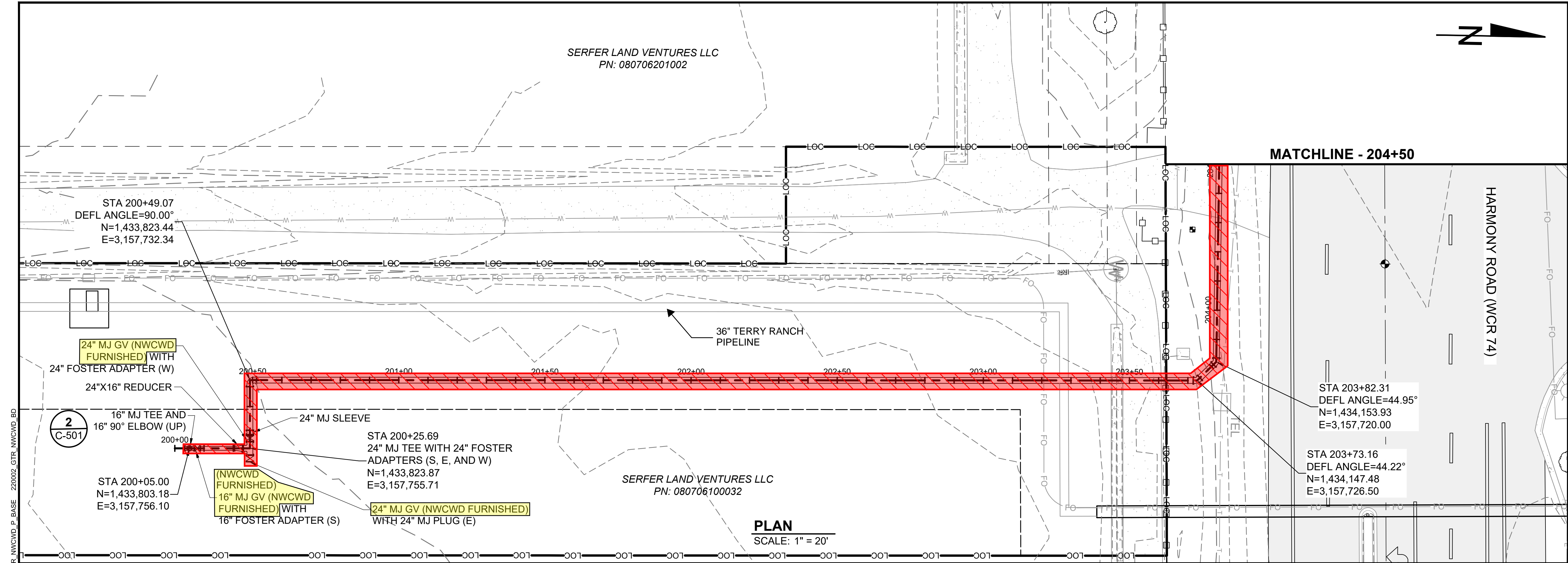
VERIFY SCALE  
BAR IS ONE INCH ON ORIGINAL DRAWING  
IF NOT ONE INCH ON THIS SHEET, ADJUST SCALES ACCORDINGLY

**NORTH WELD COUNTY  
WATER DISTRICT**  
**GREELEY INTERCONNECT  
AT HARMONY**

**PLAN AND PROFILE -  
STA 100+00 TO 100+75**

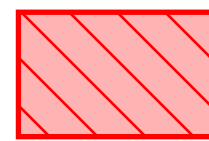
PROJECT:	220002
DRAWN BY:	B. BOHN
DESIGNED BY:	D. PYTLIK
APPROVED BY:	D. PYTLIK
SHEET:	8 OF 11
DRAWING:	PP-101



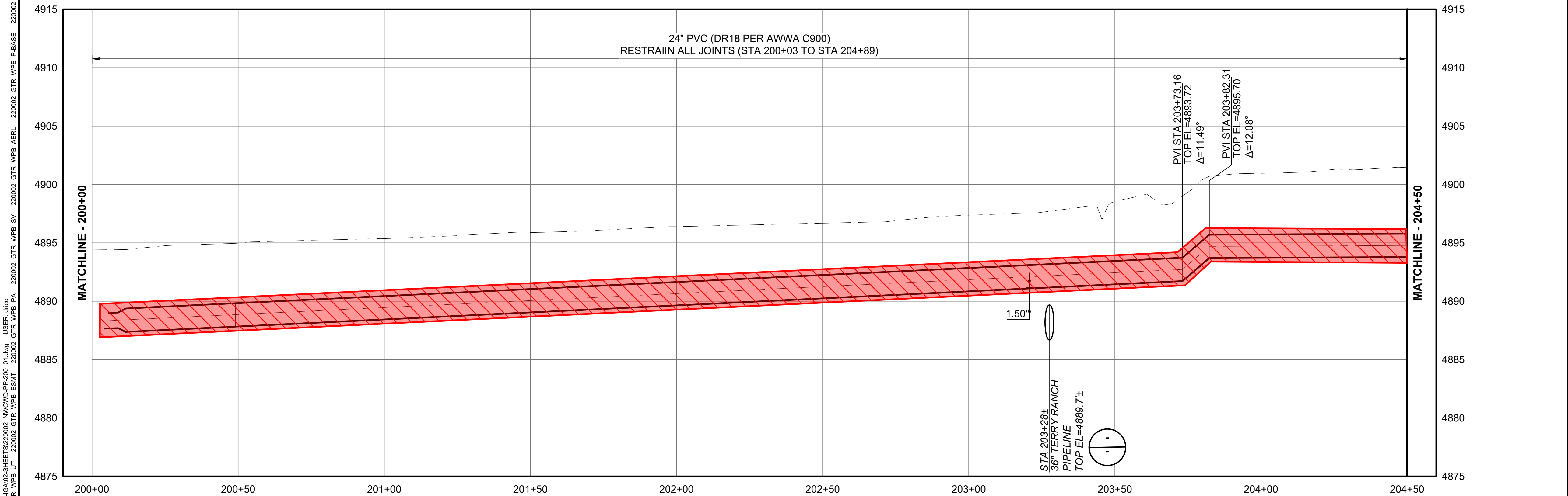


NOTES:

- NOTE 1
- NOTE 2



NORTH WELD COUNTY WATER DISTRICT WILL BE RESPONSIBLE FOR COSTS ASSOCIATED WITH MATERIALS AND INSTALLATION OF INFRASTRUCTURE WITHIN THESE LIMITS. ALL WORK SHOWN WITHIN THESE LIMITS WILL BE PERFORMED BY REYNOLDS CONSTRUCTION UNDER THE TERRY RANCH PIPELINE CONSTRUCTION CONTRACT. ALL MATERIALS WILL BE PROVIDED BY REYNOLDS CONSTRUCTION WITH THE EXCEPTION OF THREE (3) 16- AND 24-INCH GATE VALVES (HIGHLIGHTED). ALL FACILITIES WITHIN THESE LIMITS WILL BE OWNED, OPERATED, AND MAINTAINED BY THE NORTH WELD COUNTY WATER DISTRICT.



IGA / PRICING SET  
NOT FOR CONSTRUCTION  
JANUARY 11, 2023

PROVIDENCE INFRASTRUCTURE CONSULTANTS  
300 PLAZA DR, SUITE 320  
HIGHLANDS RANCH, CO 80129  
(303)997-5035  
www.providenceic.com



REYNOLDS CONSTRUCTION, LLC  
1775 E 69TH AVE  
DENVER, CO 80229  
(303) 287-7700  
www.reynoldscon.com



REVISION	DESCRIPTION OF ISSUE / REVISION	REVISED BY



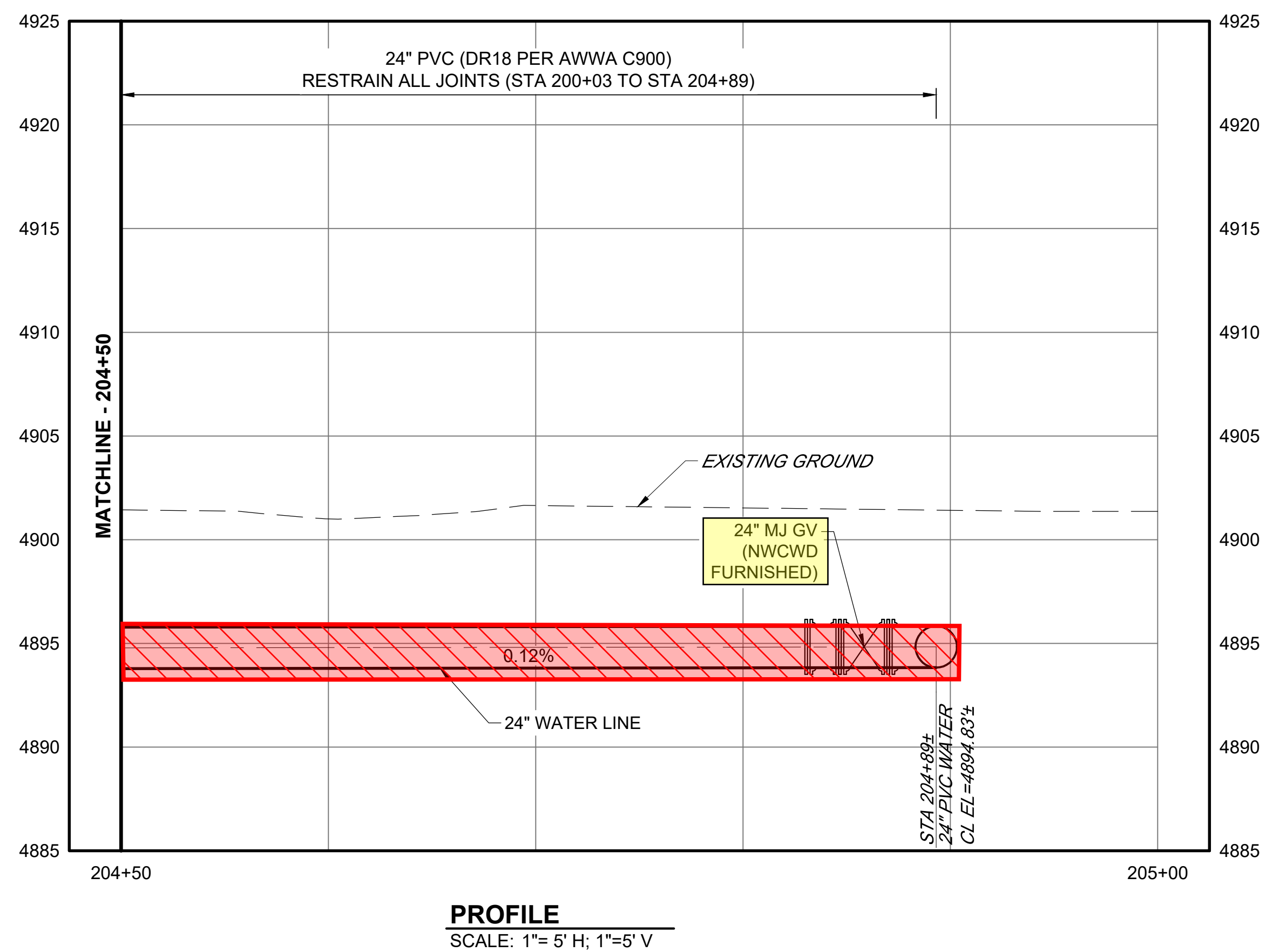
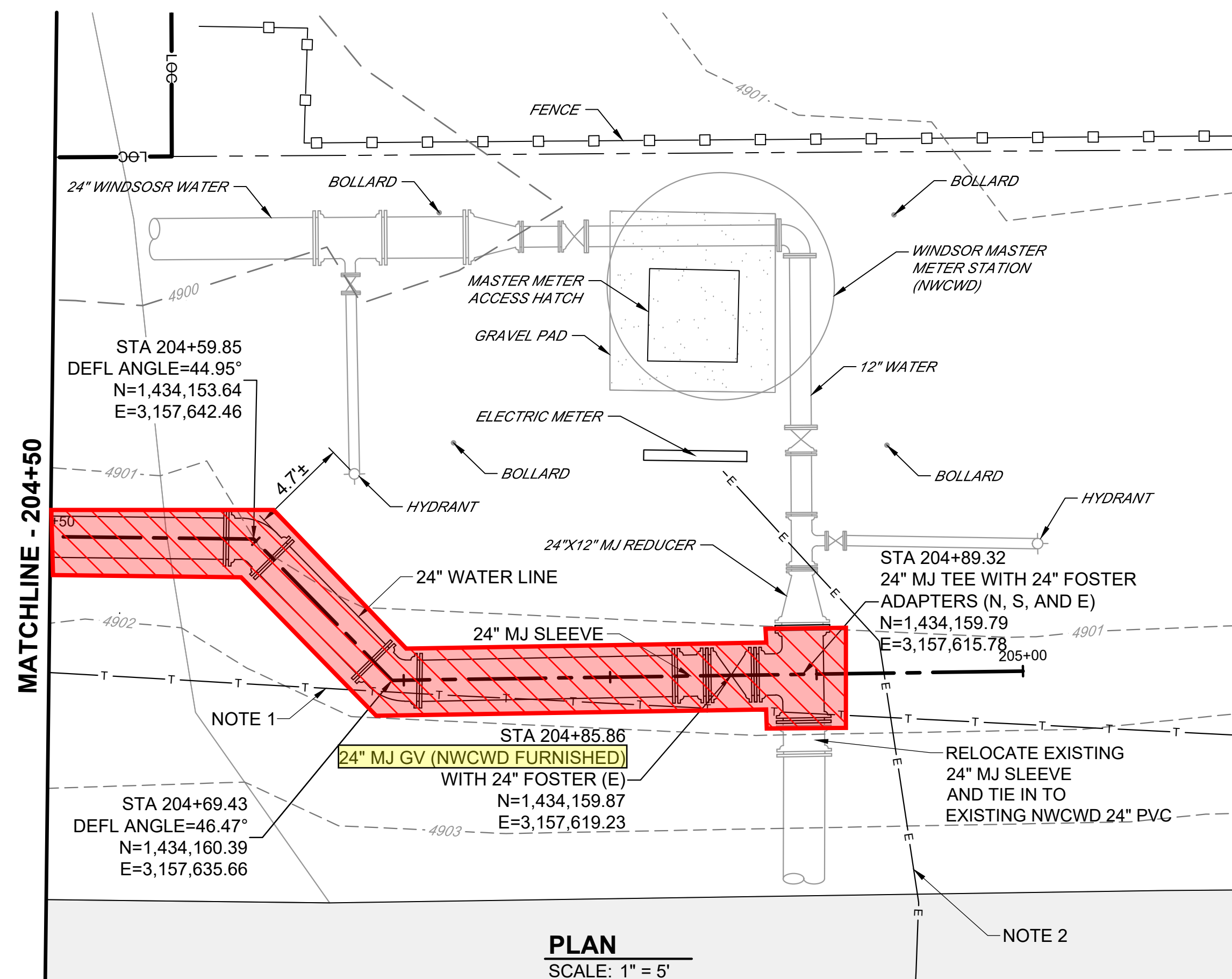
VERIFY SCALE  
BAR IS ONE INCH ON  
ORIGINAL DRAWING  
IF NOT ONE INCH ON THIS  
SHEET, ADJUST SCALES  
ACCORDINGLY

NORTH WELD COUNTY  
WATER DISTRICT  
GREELEY INTERCONNECT  
AT HARMONY

PLAN AND PROFILE -  
STA 200+00 TO 204+50

PROJECT:	220002
DRAWN BY:	B. BOHN
DESIGNED BY:	D. PYTLIK
APPROVED BY:	D. PYTLIK
SHEET:	9 OF 11
DRAWING:	PP-201





- NOTES:**
1. CONTRACTOR TO VERIFY LOCATION. COORDINATE WITH CENTURY LINK FOR ½" DIRECT BURY FIBER OPTIC LINE PROTECTION PRIOR TO CONSTRUCTION. BURY DEPTH IS APPROXIMATELY 2.0'.
  2. PROTECT IN PLACE. CONTRACTOR TO VERIFY LOCATION PRIOR TO CONSTRUCTION. USE CAUTION WHILE EXCAVATING AROUND ELECTRIC LINE.

NORTH WELD COUNTY WATER DISTRICT WILL BE RESPONSIBLE FOR COSTS ASSOCIATED WITH MATERIALS AND INSTALLATION OF INFRASTRUCTURE WITHIN THESE LIMITS. ALL WORK SHOWN WITHIN THESE LIMITS WILL BE PERFORMED BY REYNOLDS CONSTRUCTION UNDER THE TERRY RANCH PIPELINE CONSTRUCTION CONTRACT. ALL MATERIALS WILL BE PROVIDED BY REYNOLDS CONSTRUCTION WITH THE EXCEPTION OF ONE (1) 24-INCH GATE VALVE (HIGHLIGHTED). ALL FACILITIES WITHIN THESE LIMITS WILL BE OWNED, OPERATED, AND MAINTAINED BY THE NORTH WELD COUNTY WATER DISTRICT.

**IGA / PRICING SET**  
**NOT FOR CONSTRUCTION**  
**JANUARY 11, 2023**



