

COLLINS ENGINEERS & ARCHITECTS
2033 West Howard Avenue
Milwaukee, WI 53221
Phone: 414-282-6905
Fax: 414-282-6955

Catalyst
healthcare real estate
2060 N Humboldt Blvd
Suite 225
Milwaukee, WI 53212

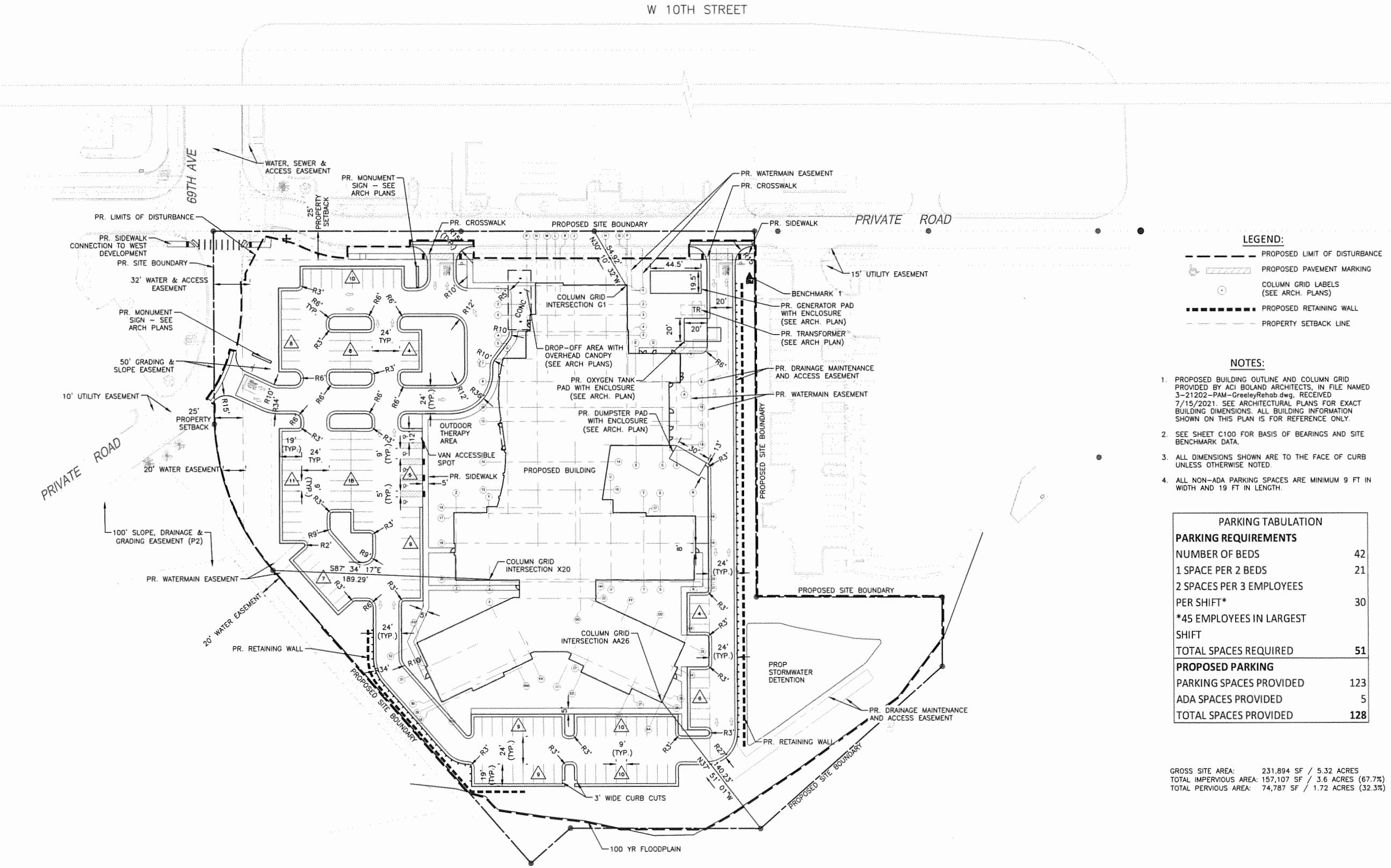
**GREELEY REHABILITATION HOSPITAL
SITE PLAN**

NO.	DATE	DESIGN BY	DESCRIPTION	
			CITY COMMENTS	CITY REVIEW COMMENTS
1	10-29-21	MJC		
2	12-8-21	MJC		

CEI PROJECT: 60-13105
DESIGN BY: MJC
DRAWN BY: MJC
CHECKED BY: RAT

DATE:
07/30/2021
SCALE:
1" = 40'
SHEET NO:
C300

Greeley, CO



SITE BENCHMARKS			
BENCHMARK ID	DESCRIPTION	LOCATION	ELEVATION
1	SET #5 REBAR WITH ALUMINUM CAP	NEAR NORTHWEST CORNER OF TRACT A	4763.40
2	NGS POINT U 136 BENCHMARK DISC	3.3 MILES FROM SITE	4674.08

- LEGEND:**
- PROPOSED LIMIT OF DISTURBANCE
 - PROPOSED PAVEMENT MARKING
 - COLUMN GRID LABELS (SEE ARCH. PLANS)
 - PROPOSED RETAINING WALL
 - PROPERTY SETBACK LINE

- NOTES:**
- PROPOSED BUILDING OUTLINE AND COLUMN GRID PROVIDED BY ACI BOLAND ARCHITECTS, IN FILE NAMED 3-21202-PAM-GreeleyRehab.dwg, RECEIVED 7/15/2021. SEE ARCHITECTURAL PLANS FOR EXACT BUILDING DIMENSIONS. ALL BUILDING INFORMATION SHOWN ON THIS PLAN IS FOR REFERENCE ONLY.
 - SEE SHEET C100 FOR BASIS OF BEARINGS AND SITE BENCHMARK DATA.
 - ALL DIMENSIONS SHOWN ARE TO THE FACE OF CURB UNLESS OTHERWISE NOTED.
 - ALL NON-ADA PARKING SPACES ARE MINIMUM 9 FT IN WIDTH AND 19 FT IN LENGTH.

PARKING TABULATION	
PARKING REQUIREMENTS	
NUMBER OF BEDS	42
1 SPACE PER 2 BEDS	21
2 SPACES PER 3 EMPLOYEES	
PER SHIFT*	30
*45 EMPLOYEES IN LARGEST SHIFT	
TOTAL SPACES REQUIRED	51
PROPOSED PARKING	
PARKING SPACES PROVIDED	123
ADA SPACES PROVIDED	5
TOTAL SPACES PROVIDED	128

GROSS SITE AREA: 231,894 SF / 5.32 ACRES
TOTAL IMPERVIOUS AREA: 157,107 SF / 3.6 ACRES (67.7%)
TOTAL PERVIOUS AREA: 74,787 SF / 1.72 ACRES (32.3%)

COLLINS ENGINEERS, INC. ASSUMES NO RESPONSIBILITY FOR DAMAGES, LIABILITY, OR COSTS RESULTING FROM CHANGES OR ALTERATIONS MADE TO THIS PLAN WITHOUT THE EXPRESSED WRITTEN CONSENT OF COLLINS ENGINEERS, INC.

N
1

SITE PLAN

SCALE: 1" = 40'

0

40'

80'