



COMMUNITY IMPACT PROGRAM APPLICATION

Project Summary Information

Project Title:

Applicant Organization(s):

Applicant Name(s):

Partner Organization (if applicable):

Partner Name (if applicable):

Amount Requested:

Estimated Total Project Cost:

Estimated Grant Period (years):

Brief Project Description (limit to space provided without expanding the text box; use 10 pt font)

Delta Park is a 6-acre neighborhood park in East Greeley that was dedicated to the City in 1972 with minimal amenities. East Greeley is experiencing a deficiency in access to healthy built environments, particularly lacking access to parks, trails and open space. Delta Park serves 2,623 residents within a 10-minute walk from home and is largely surrounded by dense, multi-family housing.

The community often refers to Delta Park as their “backyard” and many of these multi-family units open their doors directly onto the park. Despite its prominent location within the neighborhood, the park is primarily a desolate greenbelt lacking amenities with the exception of older basketball courts and a walking path without proper or culturally accessible signage. The larger East Greeley neighborhood consists of a strong Hispanic community, and the immediate Delta Park neighborhood is home to a diverse mix of immigrants and refugees from East Africa and Southeast Asia. In 2019 the City made a large effort to engage the East Greeley community and improve limited access to quality open space. Staff observed many cultural barriers when trying to engage the community immediate to Delta Park, and was unable to include Delta Park

Checklist

To ensure equity among applicants we ask that you adhere to the following when submitting materials. Please do not submit additional documents outside of those requested below.

- ☐ Project Summary Information form
- ☐ Responses to Proposal Narrative prompts
 - ☐ Limit narrative responses to 6 pages
 - ☐ Use 11 pt or larger font and 1-inch margins for formatting
 - ☐ Do not include letterhead or organizational logos as part of the narrative
 - ☐ Please limit the use of hyperlinks. Hyperlinks to other materials, such as a project website, may be included to demonstrate project elements that cannot be illustrated as an attachment due to scope or file size.
- ☐ Budget and optional budget narrative*
- ☐ Resolution from governing body of each applicant
- ☐ Wildlife Review*
- ☐ Indication of support (up to five e.g. letters of support from partners, community members, volunteers; summary of media articles, broadcasts; testimonials, etc.)
- ☐ Applicants may consider providing the following attachments:
 - ☐ Maps or diagrams (up to two pages; highly recommended to provide a sense of location, community assets, and scope of work)
 - ☐ Planning documents (extract up to two pages of pertinent information, e.g. infographic, process outlines, comments, data)
 - ☐ Photos (up to two pages)
 - ☐ Timeline

* Please use the template or form provided on the [program page](#).

Describe the proposed project and the community need it will address related to outdoor recreation and/or outdoor education. Discuss the multi-faceted benefits of this project and how it will enhance your community's quality of life.

Despite substantial investments by GOCO and Colorado Health Foundation's Healthy Communities initiatives –East Greeley continues to experience a deficiency in access to healthy built environments, notably lacking access to parks, trails, and open space. According to Trust for Public Land (TPL), 28% of Greeley residents lack access to a high-quality park within a 10-minute walk from home. East Greeley is described as a very high priority for improved park access and is also one of the most diverse communities along the Front Range. Nestled between two major highways - US Highway 85 and US 34 – the large highways effectively isolate this community from access to assets in the greater city, including major community parks and greenspaces. This isolation means that it is critical to *continue* to invest in this region of our community - both to tackle connectivity issues and improve the close-to-home parks that serve this diverse community of residents. In short, this project exemplifies Greeley's commitment to equity as we continue the work to ensure that all of our residents have access to great parks no matter where they live.

In 2021, we deepened our partnership with TPL to improve access to parks in Greeley. Our relationship began with the acquisition of Shur View Open Space in the western part of our City - a critical once-in-a-generation project that will increase access to natural open space and trails for our entire community (and the region). Through the expansion of our partnership to include East Greeley's parks, trails, and schoolyards, we are making the needed and critical connections between East Greeley residents -- especially the immigrant and refugee community -- and Shur View Open Space. Working with TPL, we quickly identified Delta Park as a catalytic project that will help us lift up and amplify the voices of our most historically-marginalized residents.

This proposal will support the renovation of Delta Park, located in the heart of East Greeley's immigrant and refugee community. The park serves 2,623 residents within a 10-minute walk from home and is primarily surrounded by dense, multi-family housing. The community often refers to Delta Park as their "backyard." Many of these multi-family units open their doors directly onto the park. Despite its prominent location within the neighborhood, the park is primarily a desolate greenbelt lacking amenities with the exception of older basketball courts and a walking path. Children comprise nearly half of the population within a 10-minute walk of Delta Park. Yet, no playgrounds or other attractive amenities entice children to play outside or be physically active. While this project is about improving the park so that it better serves the surrounding community, another perhaps equally important goal is to build trusting relationships in the community that will result in a lasting partnership to continue to improve access to parks, trails, and open spaces (like Shur View) across Greeley.

Reflect on the community-driven nature of this project and what that means for your community. Discuss efforts to date or any anticipated work to involve community members in project visioning and design and to elevate unheard voices in your community.

Beginning in Summer of 2021, the City of Greeley and TPL completed the first two phase of outreach in the community-led development of Delta Park, resulting in a community-created vision for how to transform the park into a vibrant, culturally-relevant, inspired recreation and play space.

"The park belongs to all of us and is a place where we enjoy each other's company and relax and

*have fun with our friends and families. This park is unique because the people who live here are from around the world and also have spent generations here. We are rooted to this place in our own unique ways. We are a community. We find joy in our similarities and in our differences. We celebrate one another and through the park we come together to celebrate our home and our traditions - we welcome you to join us! We play together, eat together, relax together, and gather here. **This is our shared space, this is Delta Park.**"*

Using TPL's CORE (Community Outreach with Resident Experts) strategy, the first phase of outreach focused on building trust and community leadership. Engagement activities included activating the park space so that the community began to recognize that it is indeed a public space, a significant barrier we identified early in the process. Since we knew from past engagement attempts that the immigrant and refugee community was difficult to reach, we worked with TPL and Lutheran Family Services Refugee and Asylee Program (LFS) to hire a Delta Park Coordinator (Gloria Galindo) and a Resident Leader (Yesenia Garcia) who could reach the community. Gloria recruited Yesenia from a coffee and tea chat group she organized and has also identified other potential residents to promote into leadership positions as the project enters the next phase of work. We hope to bring on at least one more resident expert during the master plan and design phase.

As trusted residents and community leaders, these amazing women have worked to establish a 10-person team of resident experts that reflect the diversity of the Delta Park neighborhood. Dubbing themselves "the Coffee Chat Group," they meet every Friday to plan park outreach events and engagement activities. Examples of their work include planning and successfully executing three extensive "Meet Me in the Park events," where we not only captured community dreams and desires for the park, but also shared the neighborhood's cultural diversity through food, sport, art, and music. The Coffee Chat Group is empowered to create the series of Meet Me in The Park events as they see fit to reach their community.

Since the first meeting in January 2022, the group has met approximately 30 times. To date, this group of resident experts has written a storybook about the park, collected surveys, and most recently planned an event to kick off the master plan process. Resident experts are provided with a \$20.00 gift card for every meeting they attend, and Gloria also brings coffee, tea, and snacks. Other relevant resources are shared at this meeting, such as health, employment, and other community resources. Gloria and Yesenia take critical decisions back to this group for their input and to inform the partner team in the planning process.

In February 2022, we began Phase 2 of the outreach process that was establishing the community's vision for the park. This included a survey of the community that was co-designed by the Coffee Chat Group. With the help of these resident experts, neighborhood youth, the Sand Creek Library's International Community Program, and two summer community events, we collected 200 completed surveys from the community directly surrounding Delta Park. The big takeaways from the survey are:

- 30% of responders have never visited Delta Park, and 22% of responders said they visited the park daily.
- 39% of responders said it is easy to access the park. 30% of responders cited that lack of shade and shelter makes it hard to visit the park. 24% of responders cited the lack of seating and lack of lighting as barriers to accessing the park.

- The top three responses in preferred activities (“What do you enjoy doing when you visit a park?”) were: Play on the Playground (50%), Sit and Relax (47%) and Meet Friends (36%).
- When asked how they would make Delta Park better in the future, the top three top response were Playground/Play Area (22%), Shade (11%), and More Places to Sit (11%).
- It is also worth noting that 25% of responders did not answer this question, which may be a reflection of cultural barriers and lack of understanding of park spaces and public land as a shared resource available to all.

With phase one and two of community outreach wrapped up, we kicked off the master plan phase in August 2022. We selected consultant Mundus Bishop with our partners, including resident experts, to ensure that every part of the process was transparent and centered in community voice and choice. It is important to note that Mundus Bishop has been contracted by TPL for both the Delta Park and Shur View Master Plan processes so that we continue to look for opportunities to leverage these two projects and bring the immigrant and refugee community to the table.

On September 11th we kicked off the Delta Park master plan process with the community at our third Meet Me In the Park! event. As with past events organized by resident experts, over 100 people attended to give their input, gather, and have fun at the park. At this event the community was able to review and provide input on the draft vision and park program. The event included a sports theme with a basketball, soccer, and volleyball tournament for youth, which reflected high priority park elements identified through surveys. We also deployed our Play on the Way Program (a mobile play program) and had fun activities for smaller children to engage in the park’s design through a sketch artist and a “design the park” board game developed by Mundus Bishop. We anticipate completing design by early 2023.

Reflect on the intended outcomes of your project and the multiple benefits it will provide for your community and discuss the partnerships you have or will pursue to achieve those benefits. Discuss the nature of each partnership and what it will bring to the table.

TPL’s CORE strategy has already strengthened the community’s relationship with their park. Resident experts working with Delta Park Coordinator Gloria Galindo are empowered by their leadership role in the process. Gloria recently reflected on how the park will impact the community saying, “My excitement comes from knowing that the newly renovated Delta Park will be a park for everyone! I’m excited that this space will be where the community is built, comes together, and celebrates unity! It will be a place where the community members are proud to take ownership of!” Our partnership with TPL and LFS has not only built a strong community-centered foundation for the master plan and design process, but will benefit the renovated park space by creating a stronger sense of community ownership of the park itself.

TPL is bringing lessons learned from over ten years of work through their Parks for People Program to Greeley to inform the engagement process and support planning, design, and construction of the park. They are also fundraising partners, helping to leverage our investment through both private individuals and foundation support, such as the Colorado Health Foundation. Their CORE strategy has been critical to helping us build trust in the community and create a foundation for genuine community centered outreach, power building, and resident leadership.

Our other critical partner is Lutheran Family Services (LFS). Through a contract with TPL, this organization supports the Delta Park Coordinator and resident experts mentioned previously. Through grant dollars

secured by TPL, they also support an artist organizer, Eyni Jama, to engage the Muslim and Somali communities. Without their commitment to the immigrant and refugee community and their willingness to serve as the backbone organization to support resident experts and artists, this project would not have the strong resident leadership that has been critical to our ability to reach this population.

Besides our partnership with TPL and LFS, other key project partners include Boys and Girls Club, Soccer Without Borders, High Plains Library District, and the Immigrant and Refugee Center of Northern Colorado. Below is a summary of how these partners have engaged in the project to date:

Boys & Girls Club of Weld County Located adjacent to the park, this organization serves youth in the immediate community surrounding Delta Park. The youth involved in after school programming have helped to collect surveys and have participated in the Meet Me In the Park! events. TPL has secured funding support for the youth leadership program (youth have selected Delta Park as their leadership project) and are currently in discussions with Boys & Girls Club on the details of this partnership.

Soccer Without Borders This organization brings soccer to communities as a way to build youth leadership and cross-cultural understanding through sport. They have helped organize two events in Delta Park to help us reach neighborhood youth and have expressed interest in programming the park once it is improved.

High Plains Library District The library has supported all of our outreach events at the park by bringing their mobile audio system and providing resources to residents. They have also provided free printing of event flyers and activated the park this summer with their International Communities Program that brings the library to the community. These weekly events at Delta Park allowed resident experts to connect to the community and collect additional surveys from residents.

Immigrant and Refugee Center of Northern Colorado This organization assisted us with event flyer and survey distribution and activated the park twice with World Refugee Day (Summer of 2021 and 2022). As a trusted community partner, their support has been invaluable as a bridge-builder among the City, project partners, and the immigrant and refugee community that surrounds the park. During the first World Refugee Day event, they also organized a mobile vaccine clinic for residents.

In addition to the organizational partners described above, we also have partnered with Unite for Literacy to create a series of storybooks to engage the community around the vision for the Delta Park. This organization develops short books that are available in both print and online versions in multiple languages. As Delta Park Coordinator Gloria Galindo explained, it is important that this community see themselves reflected in the project and the storybooks are a way to celebrate the diverse cultures of this community and communicate to the community about the role that Delta Park could play in bringing them together. We are working with the Coffee Chat Group on one of these books entitled “Meet Me in the Park” and with artist Armando Silva on a book entitled “What Happened to My Paletas.” An example page from this book is in the photo section below.

In May 2022, TPL contracted with Lutheran Family Services Rocky Mountains Refugee and Asylee Programs to hire a Somali Artist Organizer for the Delta Park Project who profoundly understands the transition to the United States as a refugee. Eyni Jama has dedicated her life to speaking up for her community. Her expertise stems from her lived experience as a migrant and artist. Eyni participated in outreach events at Delta Park in June and September and will become more deeply engaged in the project during the master plan and design phase. A poet and henna artist, Eyni will help us reach the

Somali community and may develop a third book that further communicates to the community on themes and ideas related to the renovation of the park. The first and second books will be released this fall as part of the kick-off for the master plan process with the third book following later in the year as the design progresses.

Delta Park is a truly exciting opportunity to renovate a neighborhood park space in a way that not only reflects community voice, but also helps to build bridges among cultures and between the immigrant and refugee community and our City. Our goal is to renovate the park, but the following project outcomes have also been identified with our project partners and the community:

- Increased feelings of representation among community
- Stronger, inclusive communities in Delta Park area of Greeley
- Increased agency and power of communities to create their own change
- Improved well-being among diverse communities

These outcomes are being measured by an outside evaluator contacted by TPL so that we can understand how this project has impacted the community beyond the improvements we intend to make to the built environment. GOCO support will be incredibly meaningful as we work towards our goal to build a project that fulfills the community's vision for Delta Park and accomplishes these outcomes. This proposal will support not only the City-led renovation and construction process by 2024, but also TPL's community-led outreach process through CORE and the final design phase of Delta Park.

PROJECT BUDGET & DETAILS

APPLICATION SCOPE OF WORK

Source of Funds (CASH)	Date Secured	GOCO Funds	Matching Funds
[Applicant]		\$350,000.00	
City of Greeley			\$650,000.00
Trust for Public Land-Colorado Health Foundation			\$620,000.00
Trust for Public Land-Beacon Foundation			\$30,000.00
Source of Funds (IN-KIND)			
[Applicant]			
[Partner Source]			
[Partner Source]			
subtotal		\$350,000.00	\$1,300,000.00
TOTAL SOURCE OF FUNDS		\$1,650,000.00	

Use of Funds (CASH)	Description	GOCO Funds	Matching Funds	Total Funding
City of Greeley				
Capital		\$300,000.00	\$650,000.00	\$950,000.00
Consultants-Mundus Bishop	Design	\$15,000.00	\$0.00	\$15,000.00
Category				\$0.00
vendor/service provider				\$0.00
Category				\$0.00
vendor/service provider				\$0.00
Category				\$0.00
vendor/service provider				\$0.00
TPL				\$0.00
Personnel			\$180,000.00	\$180,000.00
Consultants-Mundus Bishop	Deisgn		\$105,000.00	\$105,000.00
Community Engagement-Lutheran Family Services	Continue Work with Resdient Experts	\$30,000.00	\$0.00	\$30,000.00
Community Engagement-B&GC	Continue Work with Youth Teams	\$5,000.00	\$0.00	\$5,000.00
Capital			\$300,000.00	\$300,000.00
Office Costs and Other Expenses			\$15,000.00	\$15,000.00
Indirect			\$50,000.00	\$50,000.00
Category				\$0.00
vendor/service provider				\$0.00
subtotal		\$350,000.00	\$1,300,000.00	\$1,650,000.00
Use of Funds (IN-KIND)				
Category	Description		Matching Funds	
vendor/service provider				\$0.00
Category				\$0.00
vendor/service provider				\$0.00
Category				\$0.00
vendor/service provider				\$0.00
Category				\$0.00
vendor/service provider				\$0.00
subtotal				\$0.00
subtotal		\$350,000.00	\$1,300,000.00	\$1,650,000.00
TOTAL USE OF FUNDS*		\$1,650,000.00		

* The Total Use of Funds must equal the Total Source of Funds in the section above.

OTHER LEVERAGED RESOURCES (OPTIONAL)

CASH OR IN-KIND	Description	Total Funding
Category		
vendor/service provider		\$0.00
Category		
vendor/service provider		\$0.00
Category		
vendor/service provider		\$0.00
Category		
vendor/service provider		\$0.00
Category		
vendor/service provider		\$0.00
subtotal		\$0.00

TOTAL PROJECT VALUE **\$1,650,000.00**

GOCO % of project cost 21%
GOCO % of project value 21%

\$1,250,000.00



CULTURE, PARKS, AND RECREATION

UCCC ♦ Public Art ♦ Museums ♦ Parks ♦ Golf ♦ Recreation ♦ Youth Enrichment

TO: Alex Castino, GOGO Northern Front Range Program Officer
GOCO Grant Application Review Team

FROM: John Dargle, Director of Culture, Parks & Recreation

DATE: September 14, 2022

RE: Delta Park Great Outdoors Colorado (GOCO) Community Impact Grant

Dear Ms. Castino,

On behalf of the City of Greeley, thank you for your consideration to fund improvements at Delta Park in east Greeley. We realize the importance of activating outdoor park and recreation opportunities for our residents. The Delta Park neighborhood is home to a number of global refugees and our desire is to elevate their access to park and recreation amenities by activating Delta Park. Additional funding from the Community Impact Program will help our team continue community outreach activities, generate a final park design and fund the construction of community driven improvements within the park.

Through the work of the City of Greeley, The Trust for Public Land and our many partners involved with the Delta Park Improvement Project, we have identified the community's needs to improve the park space and have improved resident's trust in local government. This project is truly serving as a catalyst project, giving this neighborhood a stronger voice in future city projects and initiatives

As Director of the City of Greeley Culture, Parks & Recreation, I fully support our grant application to the State Board of the Great Outdoors Colorado Trust Fund in the amount of \$350,000 for the purpose of improving Delta Park and intend to submit a resolution to the Greeley City Council for approval as the designated granting signature authority. The City Council has been extremely supportive of our recent efforts to revitalize the east Greeley parks system in recent years, include the opening of Campo Esperanza (Hope Field) Natural Area and the new playground at Balsam Park.

Thank you for your strong consideration and continued support of investing in east Greeley to invigorate and activate the larger neighborhood in Delta Park.

If you should need any additional information, please contact Clint Anders at (970) 336-4180 or clint.anders@greeleygov.com.

Best regards,

John Dargle, Jr.
Director

651 10th Ave, Greeley, CO 80631 • 970.350.9406 • FAX 970.350.9463

We promise to preserve and improve the quality of life for Greeley through timely, courteous and cost-effective service.

Sample Application Resolution

CITY OF GREELEY, COLORADO
RESOLUTION NO. _____, 2022

A RESOLUTION APPROVING SUBMITTAL OF A GRANT APPLICATION TO THE
STATE BOARD OF THE GREAT OUTDOORS COLORADO TRUST FUND (GOCO) TO
SUPPORT THE PARK IMPROVEMENTS TO DELTA PARK.

WHEREAS, the City of Greeley supports the Great Outdoors Colorado grant application for
Park Improvements at Delta Park. And if the grant is awarded, the City of Greeley supports the
completion of the project, and;

WHEREAS, if the grant is awarded, the City of Greeley supports the timely completion of this
park project as they have done with previous park and natural area projects supported by Great
Outdoors Colorado grant opportunities, and;

WHEREAS, the State of Colorado GOCO requires evidence of governing body support as part
of its grant application process; and,

NOW, THEREFORE, BE IT HEREBY RESOLVED BY THE CITY COUNCIL OF THE CITY
OF GREELEY, COLORADO THAT:

- Section 1: The City Council of the City of Greeley strongly supports the application for a
grant with Great Outdoors Colorado.
- Section 2: If the grant is awarded, the City Council of the City of Greeley strongly supports
the completion of the project.
- Section 3: The City Council of the City of Greeley intends to authorize the expenditure of
funds necessary to meet the terms and obligations of any Grant awarded.
- Section 4: The project site is owned by the City of Greeley and will be owned by City of
Greeley for the next 25 years.
- Section 5: The City of Greeley will continue to maintain any and all park improvements in a
high quality condition and will appropriate funds for maintenance in its annual
budget.
- Section 6: The City of Greeley will assure that the site will always be open and accessible to
the general public at all times parks are open.
- Section 7: If the grant is awarded, the City Council of the City of Greeley hereby authorizes
the Mayor to sign the grant agreement with Great Outdoors Colorado.
- Section 8: This resolution to be in full force and effect from and after its passage and
approval

PASSED AND ADOPTED, SIGNED AND APPROVED ON THIS ____DAY OF _____, 2022.

ATTEST:

THE CITY OF GREELEY, COLORADO

City Clerk

Mayor



COLORADO PARKS & WILDLIFE WILDLIFE REVIEW

The applicant is responsible for addressing any environmental impacts associated with the project, including securing all necessary permits, licenses, clearances, and environmental analysis necessary to comply with local, state, or federal law.

Applicant

Name: Clint Anders

Email: clint.anders@greeleygov.com

Title: Parks Planner

Phone: 970-336-4180

Please consult with your local Colorado Parks & Wildlife (CPW) District or Area Manager to complete the table below and associated narrative questions as appropriate.

CPW Representative

Name: Jackson Davis

Email: jackson.davis@state.co.us

Title: District Wildlife Manager III

Phone: 970-342-0461

☒ CPW representative, check this box if no significant environmental considerations exist and skip the remainder of the form.

Environmental Considerations	Not Applicable	Negligible Impacts	Minor Impacts	Significant Impacts	Insufficient Information
Plant/animal species of special concern; state/federal listed or proposed listed	<input type="checkbox"/>	<input type="checkbox"/>	<input type="checkbox"/>	<input type="checkbox"/>	<input type="checkbox"/>
Unique or important habitat (<i>i.e. migration, winter-range, reproductive considerations</i>)	<input type="checkbox"/>	<input type="checkbox"/>	<input type="checkbox"/>	<input type="checkbox"/>	<input type="checkbox"/>
Unique or important aquatic habitat (<i>i.e. fish passage, spawning habitat</i>)	<input type="checkbox"/>	<input type="checkbox"/>	<input type="checkbox"/>	<input type="checkbox"/>	<input type="checkbox"/>
Water quality/quantity – surface and ground water considerations	<input type="checkbox"/>	<input type="checkbox"/>	<input type="checkbox"/>	<input type="checkbox"/>	<input type="checkbox"/>
Stream flow characteristics	<input type="checkbox"/>	<input type="checkbox"/>	<input type="checkbox"/>	<input type="checkbox"/>	<input type="checkbox"/>
River corridors/lakes/ponds/ seasonal water ways	<input type="checkbox"/>	<input type="checkbox"/>	<input type="checkbox"/>	<input type="checkbox"/>	<input type="checkbox"/>
Wetlands/floodplains	<input type="checkbox"/>	<input type="checkbox"/>	<input type="checkbox"/>	<input type="checkbox"/>	<input type="checkbox"/>
Storm water runoff	<input type="checkbox"/>	<input type="checkbox"/>	<input type="checkbox"/>	<input type="checkbox"/>	<input type="checkbox"/>
Sedimentation	<input type="checkbox"/>	<input type="checkbox"/>	<input type="checkbox"/>	<input type="checkbox"/>	<input type="checkbox"/>
Disturbances to neighboring properties	<input type="checkbox"/>	<input type="checkbox"/>	<input type="checkbox"/>	<input type="checkbox"/>	<input type="checkbox"/>
Soil/erosion	<input type="checkbox"/>	<input type="checkbox"/>	<input type="checkbox"/>	<input type="checkbox"/>	<input type="checkbox"/>
Introduction or promotion of non-native species	<input type="checkbox"/>	<input type="checkbox"/>	<input type="checkbox"/>	<input type="checkbox"/>	<input type="checkbox"/>
Environmental disturbances during construction	<input type="checkbox"/>	<input type="checkbox"/>	<input type="checkbox"/>	<input type="checkbox"/>	<input type="checkbox"/>

MITIGATION Please describe any necessary mitigation measures under consideration for impacts exceeding negligible (consider alternative design or trail route system; screening users from wildlife area, protection of critical habitat, channeling use through less sensitive habitat areas; re-vegetation of disturbed areas and control of invasive species; management of users and related activities with signs, fencing, and education programs; consideration of runoff when selecting project materials, such as uncured concrete to encourage seepage; comprehensive storm water runoff plan).

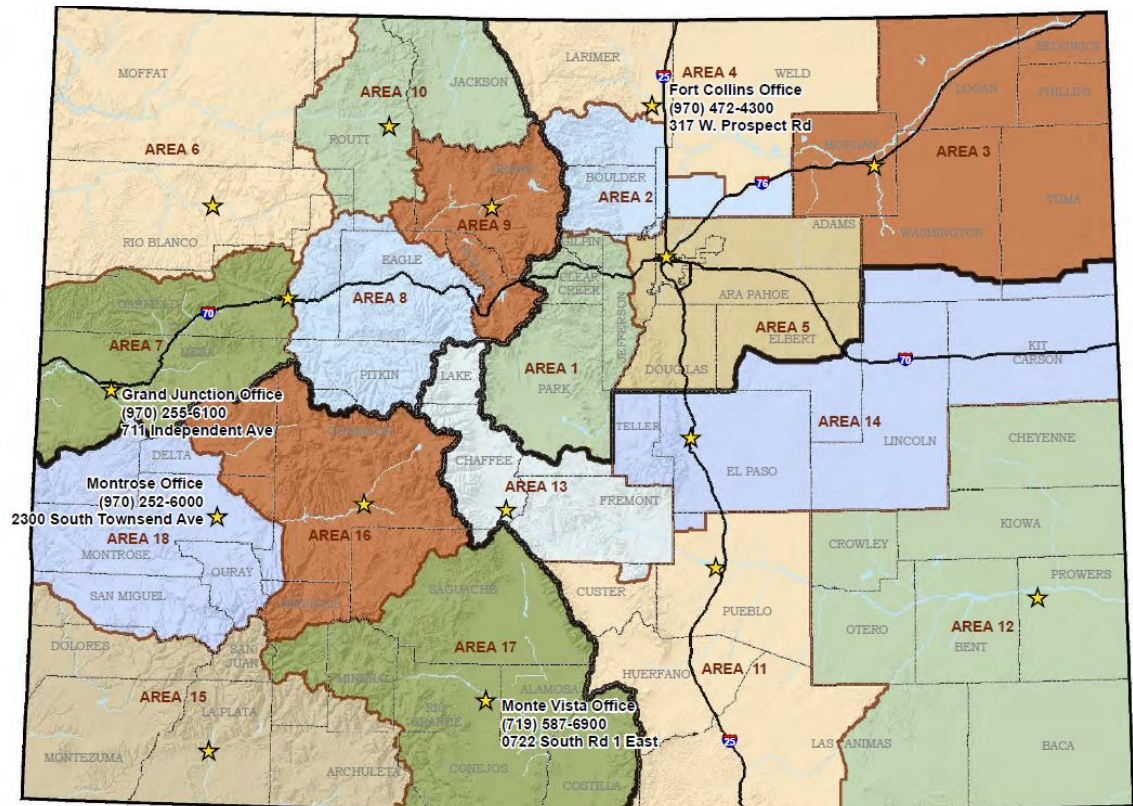


BENEFIT Please describe any anticipated positive impacts on wildlife and/or sensitive species (consider habitat improvement such as restoration of native habitat, wetlands restoration, erosion reduction, sediment reduction, river corridor clean-up, or plantings with a diversity of species and plant types for habitat restoration, and the reduction or elimination of non-native plant species; education of users through environmental education programs, opportunities for “watchable wildlife,” and wildlife impact monitoring).

ENVIRONMENTAL COMPLIANCE The applicant is responsible for adhering to all applicable environmental compliance regulations including, but not limited to Migratory Bird Treaty Act; concurrence with US Fish and Wildlife Service if any federally listed species of concern exist in project area; Clean Water Act section 404; US Army Corps of Engineers 404 permits; raptor buffer guidelines and incorporation of CPW recommended wildlife best management practices; CO Senate Bill 40 (33-5-101-107, CRS 1973 as amended); Colorado Historical, Prehistoric and Archeological Resources Act.

Colorado Parks & Wildlife Contact Information and Map

Northeast Region				
	Area	Name	Email	Phone
1	Staunton State Park	Mark Lamb	mark.lamb@state.co.us	303.291.7241
2	Fort Collins	Jason Duetsch	jason.duetsch@state.co.us	970.472.4461 720.665.4858 (c)
3	Brush	Todd Schmidt	todd.schmidt@state.co.us	970.768.7830
4	Fort Collins	Jason Surface	jason.surface@state.co.us	303.472.4315
5	Denver	Matt Martinez	matt.martinez@state.co.us	303.291.7122
Northwest Region				
	Area	Name	Email	Phone
6	Meeker / Craig	Bill de Vergie	bill.devergie@state.co.us	970.878.6061
7	Grand Junction	Kirk Oldham	kirk.oldham@state.co.us	970.255.6178
8	Glenwood Springs	Matt Yamashita	matt.yamashita@state.co.us	970.947.2927
9	Hot Sulphur Springs	Jeromy Huntington	jeromy.huntington@state.co.us	970.725.6210
10	Steamboat Springs	Kris Middledorf	kris.middledorf@state.co.us	970.871.2842
10	or	Josh Dilley	josh.dilley@state.co.us	970.723.4625
Southeast Region				
	Area	Name	Email	Phone
11	Pueblo	Mike Brown	mike.brown@state.co.us	719.561.5303
12	Lamar	Todd Marriott	todd.marriott@state.co.us	719.336.6603 719.668.9241 (c)
13	Salida	Sean Shepherd	sean.shepherd@state.co.us	719.530.5526
14	Colorado Springs	Tim Kroening	tim.kroening@state.co.us	719.227.5218
Southwest Region				
	Area	Name	Email	Phone
15	Durango	Adrian Archuleta	adrian.archuleta@state.co.us	970.375.6770
16	Gunnison	Brandon Diamond	brandon.diamond@state.co.us	970.641.7069
17	Monte Vista	Rick Basagoitia	rick.basagoitia@state.co.us	719.588.8200
18	Montrose	Rachel Sralla	rachel.sralla@state.co.us	970.252.6010





September 13, 2022

Great Outdoors Colorado
1900 Grant Street, St 725
Denver, CO 80203

Re: Delta Park and Community Impact Grant Opportunity

To GOCO Review Committee:

Thank you for your consideration of The City of Greeley's grant application requesting \$350,000 to support the community-led renovation and revitalization of Delta Park in Greeley. Soccer Without Borders would like to offer our support to the City in their efforts to responsibly plan and construct a vibrant and healthy outdoor space reflective of the unique cultures represented in this community; one that inspires gathering, belonging, community cohesion, and a sense of welcoming to residents both current and new.

As one of the longest standing newcomer serving organizations in Greeley, Soccer Without Borders is particularly excited to open this opportunity to residents so their voice, needs, and desires can be heard in building their new lives in their new community. Through our work in the community utilizing sport and play to create a sense of belonging for immigrant and refugee youth, we've witnessed the importance of establishing safe communal gathering places such as Delta Park.

Delta Park is a unique community greenspace that serves as the backyard for many of our immigrant and refugee community members. While it is a large and open space, it is uninspired and lacking in amenities for both community gathering and healthy recreation. The addition of a playground, gathering areas, walking paths, and vibrant, culturally relevant art, would bring this space to life and inspire the community to co-mingle, learn about one another, and instill a sense of belonging and pride of place.

Soccer Without Borders is eager to be working in partnership with the City of Greeley and the Trust for Public Land to engage this unique community and connect them with the opportunity to have a voice in meeting community needs through design of this park. Having access to opportunities to civically engage and co-design a community space is a first-time experience for many in our communities, and we look forward to incorporating residents into this engaging democratic process.

We consider this park to be a wonderful opportunity for healthy outdoor recreation and programming opportunities for nearby schools and residents of Delta Park, along with the greater East Greeley community. Thank you for your consideration in supporting this transformative community-inspired project.

Sincerely,

Sarah Stangl Keras
Colorado Program Manager
Soccer Without Borders
970-573-7970



REFUGEE & ASYLEE PROGRAMS

Albuquerque
Colorado Springs

Denver
Greeley

Las Cruces

Services that heal, strengthen, and provide hope

Great Outdoors Colorado
1900 Grant Street, St 725
Denver, CO 80203

September 9th, 2022

Re: Delta Park and Community Impact Grant Opportunity

Dear GOCO Review Committee:

Thank you for your consideration of The City of Greeley's grant application requesting \$350,000 to support the community-led renovation and revitalization of Delta Park in Greeley. Lutheran Family Services Rocky Mountains (LFSRM) Refugee & Asylee Programs in Greeley would like to offer support to the City in their efforts to responsibly plan and construct a vibrant and healthy outdoor space reflective of the unique cultures represented in this community; one that inspires gathering, belonging, community cohesion, and welcome to current and new residents.

As active collaborators on the Delta Park Improvement Project, we have already seen the positive impact of the events and the coffee chat group in making residents feel welcomed to the space. We are a refugee resettlement agency and a major focus area for us is refugee and immigrant civic engagement as it is an influential factor to an immigrant's successful integration into a new community.

Delta Park is a unique community greenspace that serves as the backyard for many of our immigrant and refugee community members. While it is a large and open space, it is uninspired and lacking in amenities for both community gathering and healthy recreation. The addition of a playground, gathering areas, walking paths, and vibrant, culturally relevant art, would bring this space to life and inspire the community to co-mingle, learn about one another, and instill a sense of belonging and pride of place.

LFSRM Refugee & Asylee Programs in Greeley is eager to be working in partnership with the City of Greeley and the Trust for Public Land to engage this unique community and connect them with the opportunity to have a voice in meeting community needs through design of this park. Having access to opportunities to civically engage and co-design a community space is a first-time experience for many in our communities, and we look forward to incorporating residents into this engaging democratic process.

We consider this park to be a wonderful opportunity for healthy outdoor recreation and programming opportunities for nearby schools and residents of Delta Park, along with the greater East Greeley community. Thank you for your consideration in supporting this transformative community-inspired project.

Sincerely,

Alex Kloehn

Alex Kloehn

Program Director

970-573-7459



1410 Grant Street
Suite D210
Denver, CO 80203

September 15, 2022

Great Outdoors Colorado
1900 Grant Street, St 725
Denver, CO 80203

Re: Delta Park and Community Impact Grant Opportunity

To GOCO Review Committee:

Thank you for your consideration of The City of Greeley's grant application requesting \$350,000 to support the community-led renovation and revitalization of Delta Park in Greeley. Trust for Public Land would like to offer our support to the City in their efforts to responsibly plan and construct a vibrant and healthy outdoor space reflective of the unique cultures represented in this community; one that inspires gathering, belonging, community cohesion, and a sense of welcoming to residents both current and new.

Trust for Public Land creates parks and protects land for people, ensuring healthy livable communities for generations to come. We believe access to the outdoors is a fundamental human need and essential to our health and well-being. We are committed to creating more places that bring us outside-parks, trails, playgrounds, and public lands-and making them available and welcoming to everyone, everywhere. As social and cultural hubs, parks foster solidarity and pride. Whether sharing a trail, picnic table, or live performance, communities flourish on public soil. People who live near parks know more of their neighbors, have more friends, and are happier with where they live.

In partnership with the City and the community, we have completed the first two phases of outreach at Delta park which include building up the community's capacity to fully engage and lead this work. This work included multiple events, resident led engagement, creative place making, art by local artists, community surveys, and youth leadership activities. To date the community has prioritized a new playground, soccer fields, improved basketball courts, and gathering spaces for the park. In addition to these physical improvements, Delta Park offers a unique and powerful opportunity to not only improve greenspace, but to explore the idea of how co-creating parks and greenspace can increase community welcoming, belonging and inclusion.

Thank you for your consideration in supporting this transformative community-inspired project. Please do not hesitate to contact me with any questions emily.paaterson@tpl.org, 720-442-4498.

Sincerely,

A handwritten signature in black ink that reads "Emily Patterson".

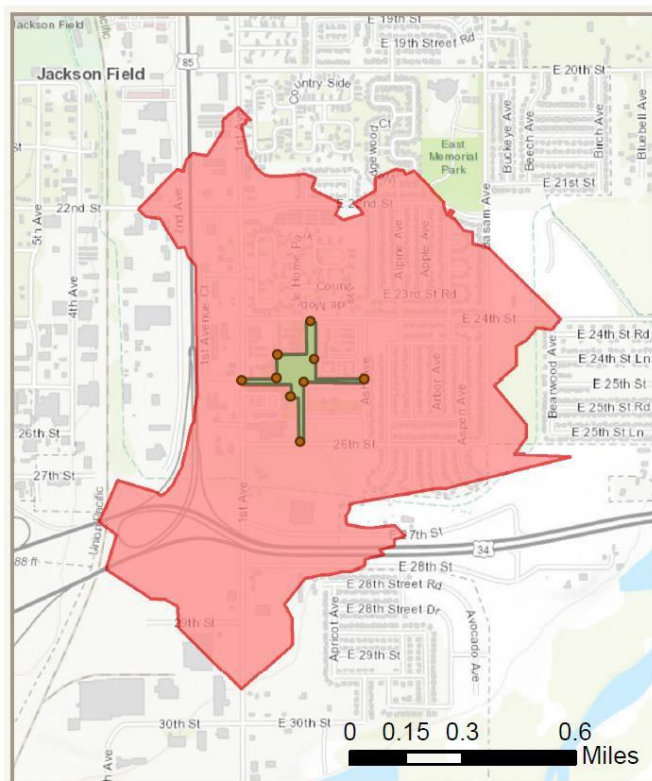
Emily Patterson
Parks for People Managing Director, Colorado
Trust for Public Land

DELTA PARK RENOVATION PROJECT

Nearby Community Gathering Places



10-MINUTE WALK



Map Legend

- Access Points
- User-Defined Project Boundary
- 10-minute walk service areas

DELTA PARK PHOTOS



STORYBOOK PROJECT

PAGE 1

- Hello my name is Pedro. Do you know what happened to my paletas?



COMMUNITY SUPPORT BOARD

A Vision for Delta Park - Draft Una visión para el Parque Delta - Borrador

The park belongs to all of us and is a place where we enjoy each other's company and relax and have fun with our friends and families. This park is unique because the people who live here are from around the world and also have spent generations here. We are rooted to this place in our own unique ways. We are a community. We find joy in our similarities and in our differences. We celebrate one another and through the park we come together to celebrate our home and our traditions - we welcome you to join us! We play together, eat together, relax together, and gather here. **This is our shared space, this is Delta Park.**

El parque nos pertenece a todos y es un lugar donde disfrutamos de la compañía de los demás y nos relajamos y divertimos con nuestros amigos y familias. Este parque es único porque las personas que viven aquí son de todo el mundo y también han pasado generaciones aquí. Estamos conectados a este lugar a nuestra manera. Somos una comunidad. Encontramos la alegría en nuestras similitudes y en nuestras diferencias. En el parque nos reunimos para celebrar nuestro hogar y nuestras tradiciones - ¡te invitamos a unirte a nosotros! Jugamos juntos, comemos juntos, nos relajamos juntos y nos reunimos aquí. **Este es nuestro espacio compartido, este es el Parque Delta.**

Delta Park
Parque Delta



TRUST FOR
PUBLIC
LAND



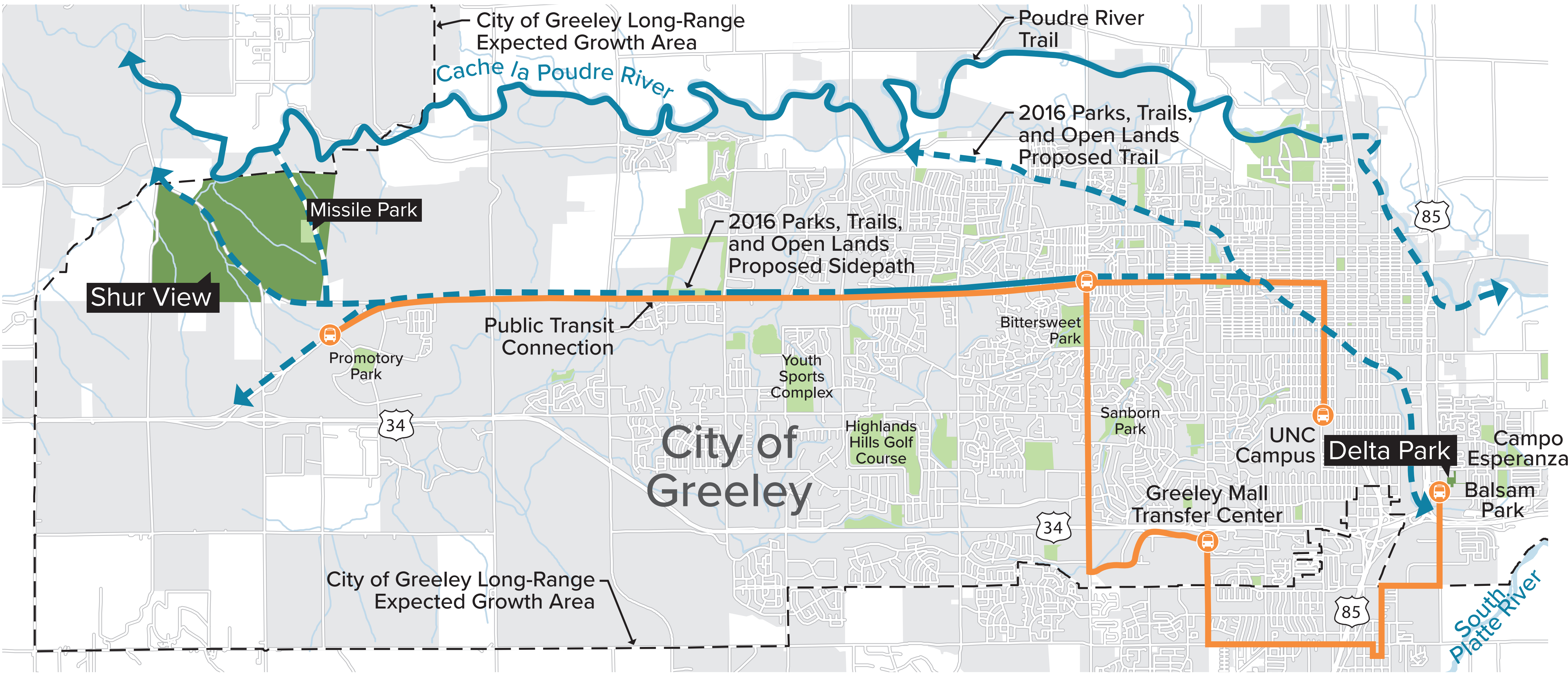
COMMUNITY EVENT
SEPTEMBER 11, 2022

EVENTO COMUNITARIO
11 DE SEPTIEMBRE DE 2022

WELCOME!

Introduction / Purpose of this Community Event

- » Confirm what we’ve heard from the survey and share survey results
- » Share your wishes/ideas for Delta Park - help us Build a Park!



Project Schedule

We're here!

PROJECT LAUNCH	SHARE YOUR IDEAS	REVIEW & PROVIDE INPUT	PROJECT COMPLETION	
AUGUST	SEPTEMBER	OCTOBER		2023
DISCOVERY & PROGRAMMING	DISCOVERY & PROGRAMMING CONCEPTUAL DESIGN	PREFERRED CONCEPT MASTER PLAN		PROJECT BIDDING & CONSTRUCTION
	<ul style="list-style-type: none">• Community Event #1• Partner Interviews• Stakeholder Meetings	<ul style="list-style-type: none">• Community Event #2• Stakeholder Meetings		

Delta Park

What We've Heard So Far

What do you like to do when you visit a park?



Play on the Playground



Sit and Relax



Meet Friends

How would you make Delta Park better in the future?



Playground / Play Area



Shade



More Places to Sit

Is there anything that makes it hard to visit Delta Park?



None, it is Easy



Lack of Shade / Shelter



Lack of Seating