

Intergovernmental Agreement (IGA) Sewer Treatment Services Greeley and Evans (Ashcroft Lift Station)

Presented to City Council

May 4, 2021

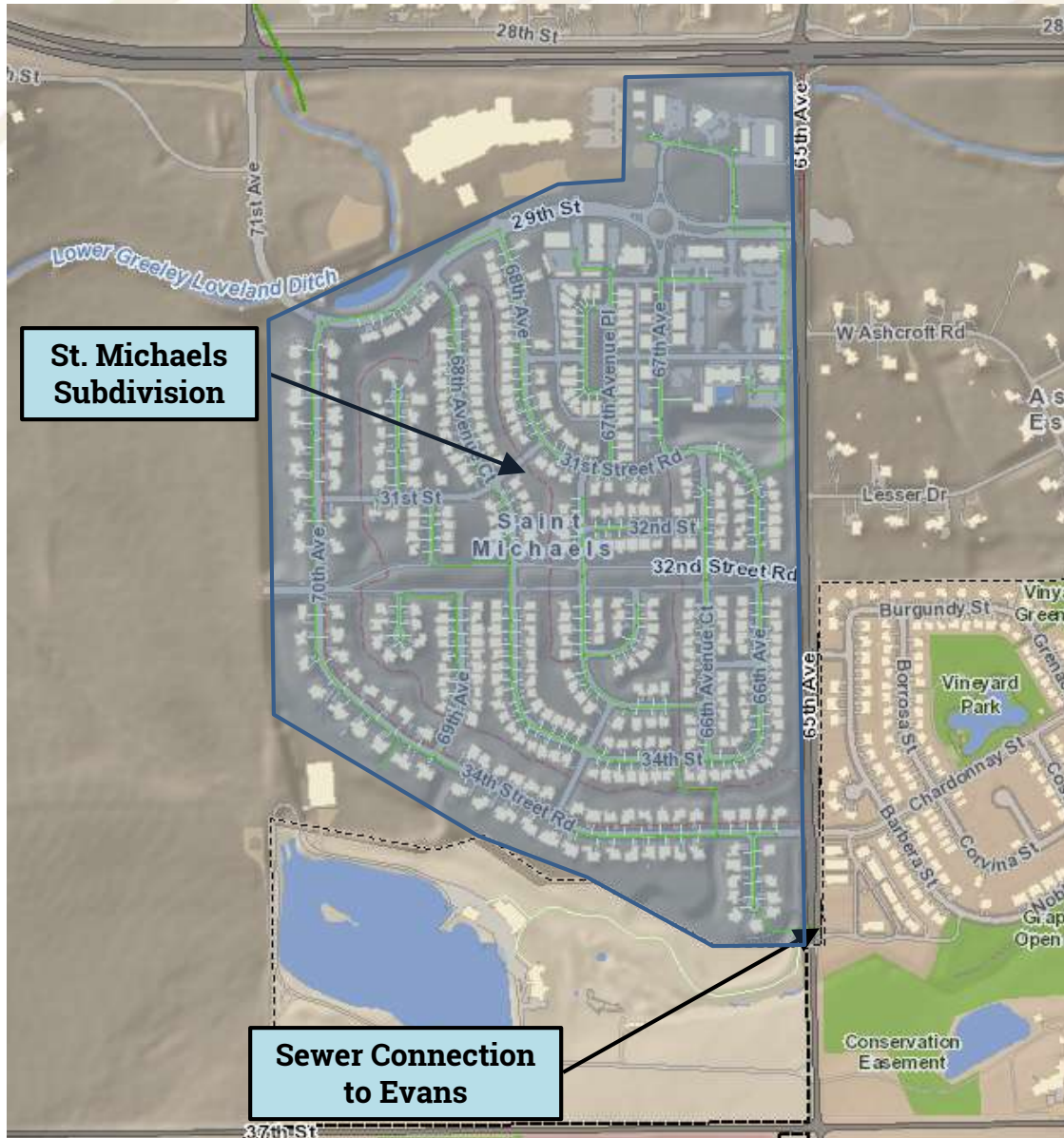


Purpose for Amending IGA for Sewer Treatment Services

- Amend IGA Based on Planned Changes in Ashcroft Sewer Drainage Area (Ashcroft Lift Station)
- Amend System Development Charges that are more favorable to Greeley
- Provide Emergency Overflow Conveyance and Treatment for Ashcroft Lift Station
- Allow for Taps on temporary basis until Ashcroft Lift Station is constructed



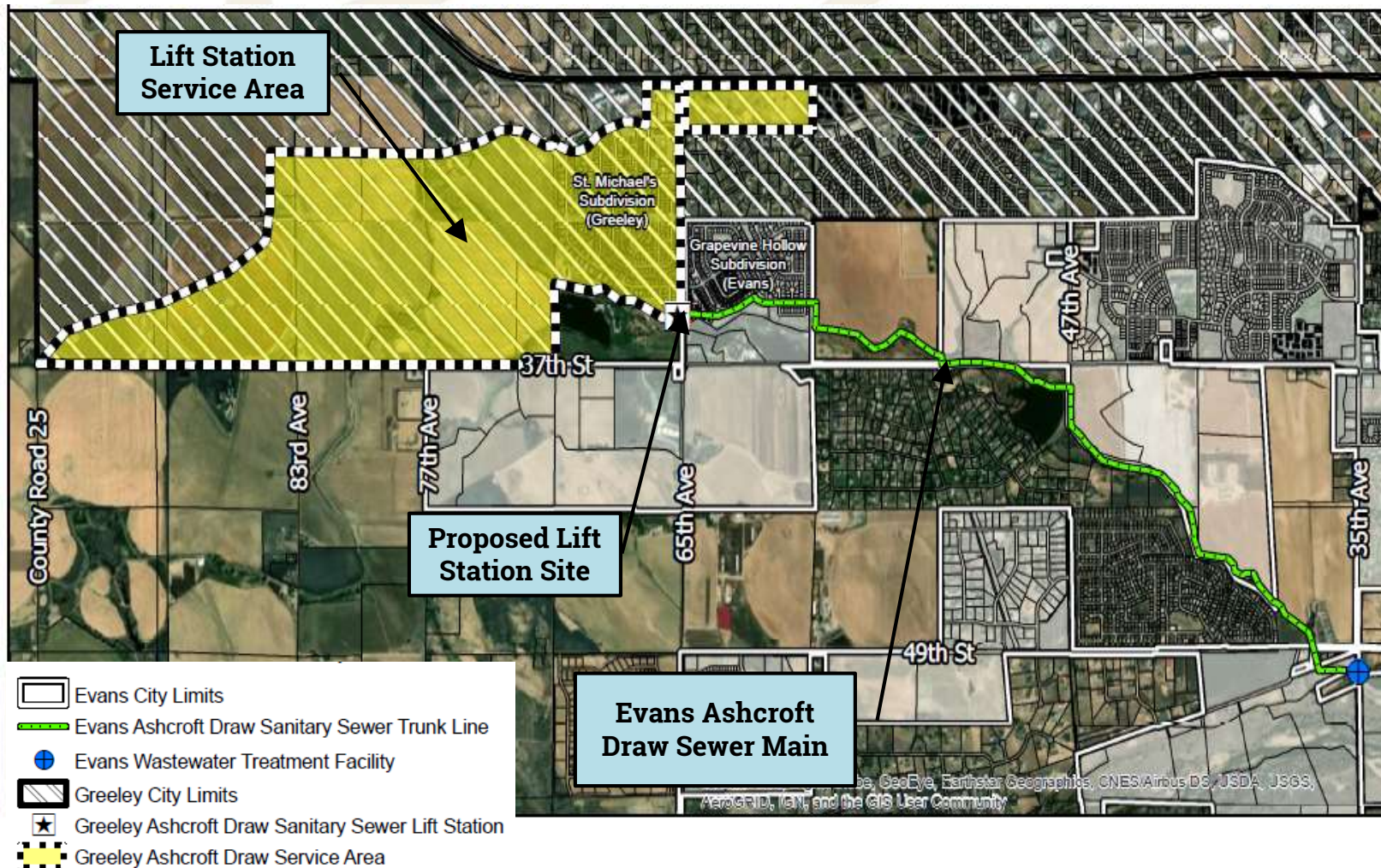
Existing IGA Sewer Treatment Services



- St Michaels Subdivision currently served by Evans, under Existing IGA. from 2002
- Current IGA Limitations
 - No more than 200 residential taps
 - Additional taps require Evans approval
 - Evans has Limited Treatment Capacity
 - Greeley collects SDC and paid to Evans
 - St Michaels residents are Greeley Customers and billed accordingly
 - Greeley W&S pays the difference in rates (Evans-\$43/month) (Greeley-\$23/month)

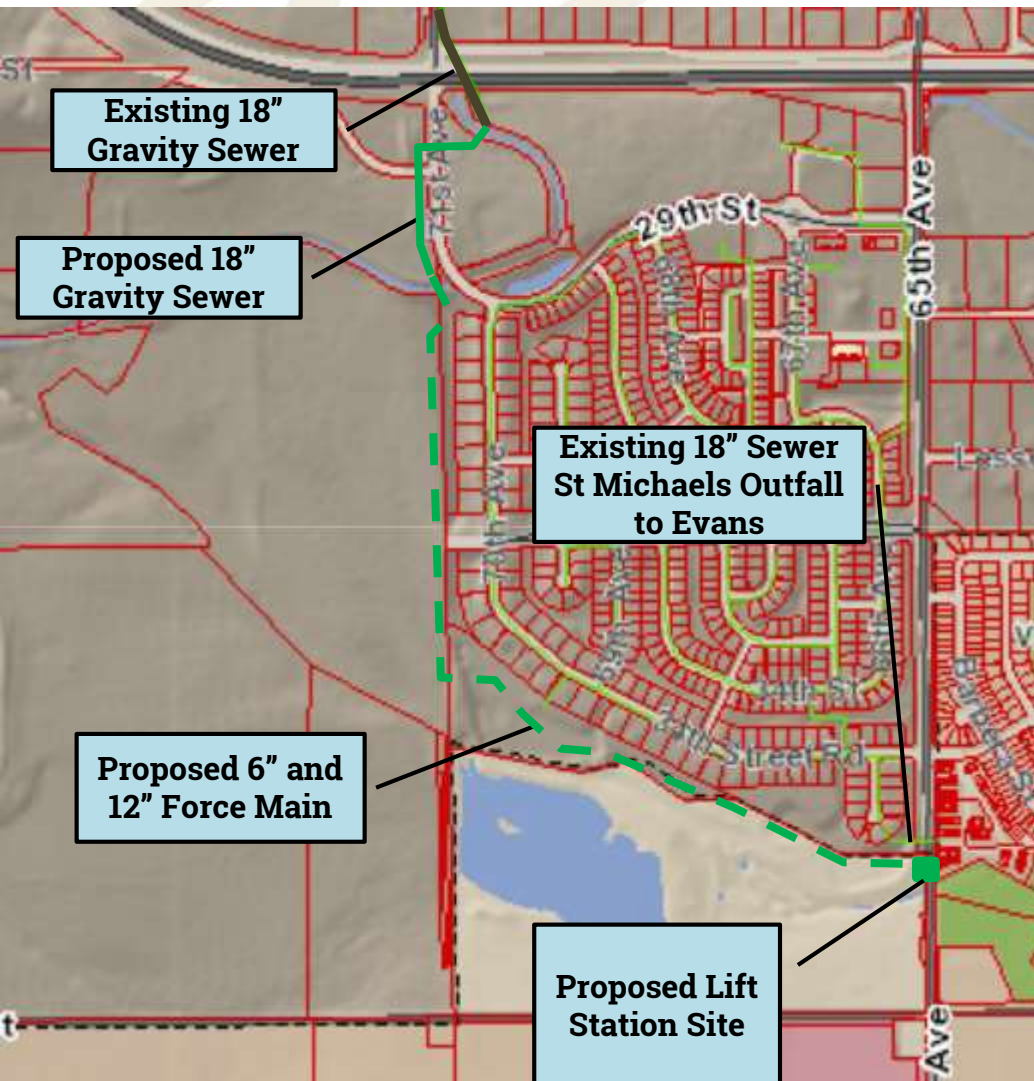


Ashcroft Lift Station Service Area



- Undeveloped Parcels in St Michaels - (2) Residential and (1) Commercial Lot
- 730 Multi Family Units (Estimated 1st Building Permit on June 2022)
- Approximately 715 Ac of Undeveloped Land

Ashcroft Lift Station Improvements



Lift Station

- Capacity of 2.9 MGD, Below Grade Dry Pit and Wet Pit, Odor Control, Force Main & Gravity Sewer
- Emergency Gravity Overflow to Evans (Evans IGA Amendment)

Ashcroft Lift Station Project Schedule

- 90% Construction Drawings - April 2021
- CMAR Guaranteed Maximum Price - May 2021
- Easement and Land Acquisition
 - Negotiated Acquisition – May to June 2021
 - Condemnation - October 2021
- Local Improvement District (LID) Ordinance – June 2021
- Construction anticipated start of July or November (dependent on land acquisitions) - 7 month duration



IGA Amendment

Proposed Amendments of the Existing IGA

- Prior to Ashcroft Draw Lift Station
 - Grants up to 650 residential taps
 - System Development Charge (SDC) for new taps paid monthly at 4.17 percent of total SDC (50% of SDC paid in 12 months)
 - After 5-years if Lift Station is not constructed the remaining 50% of SDC due.
- After Ashcroft Lift Station
 - Evans to Provide Emergency Overflow Conveyance and Treatment
- Scheduled for Evans City Council April 20th



IGA Benefits

IGA Benefits to Greeley

- Increases number of new taps allowed at a temporary reduced rate
- Permanent Lift Station Emergency Overflow and Operational Flexibility
- Eliminates Onsite Emergency Storage required by CDPHE.
 - A 50'x50'x13' vault difficult fit on the proposed site
 - Estimated Cost Savings \$400,000 (No Emergency Storage)



Recommendation

- Staff recommends that the City Council Approve the 1st Amendment to Intergovernmental Agreement for Sewage Treatment Services

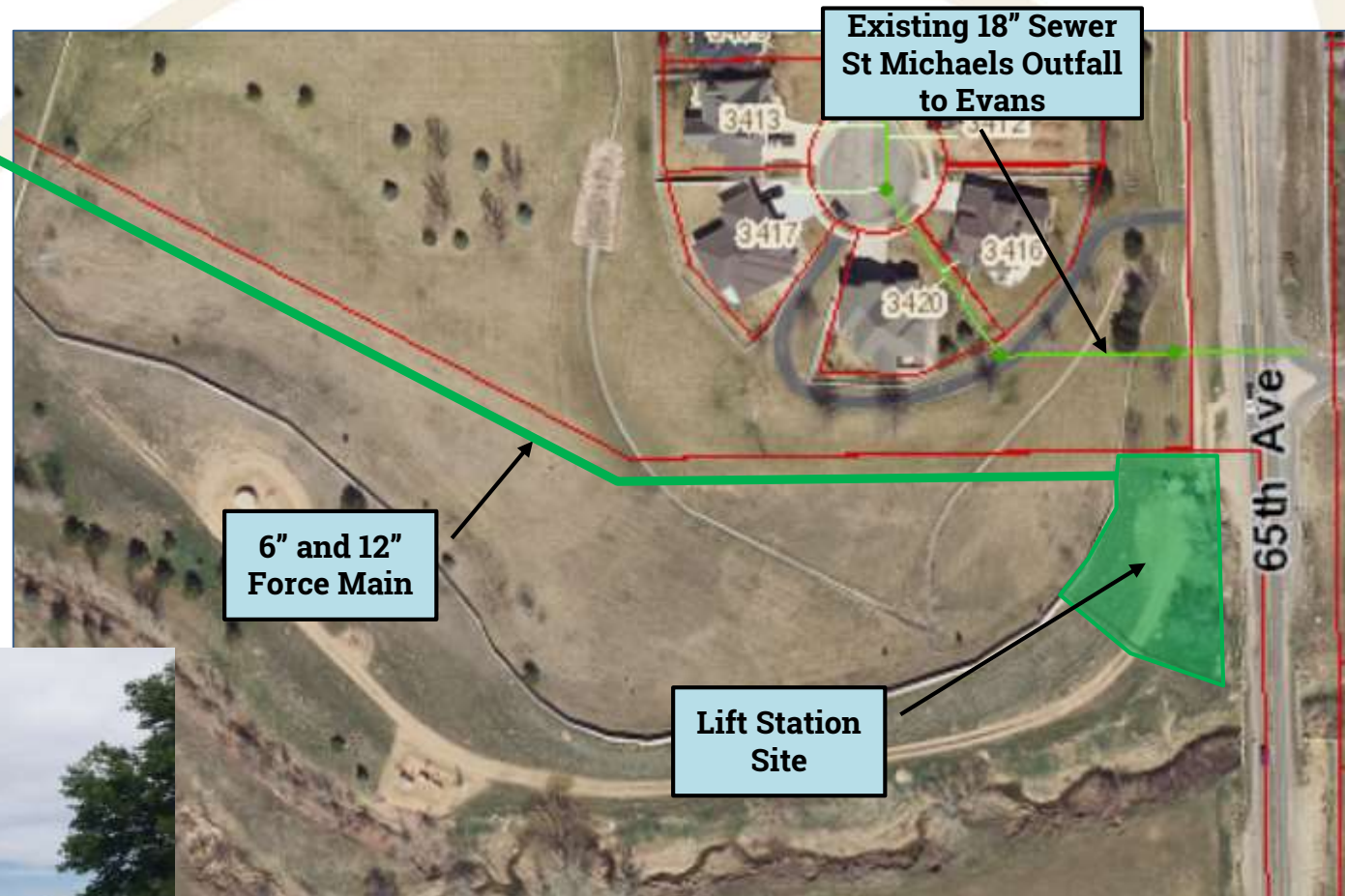
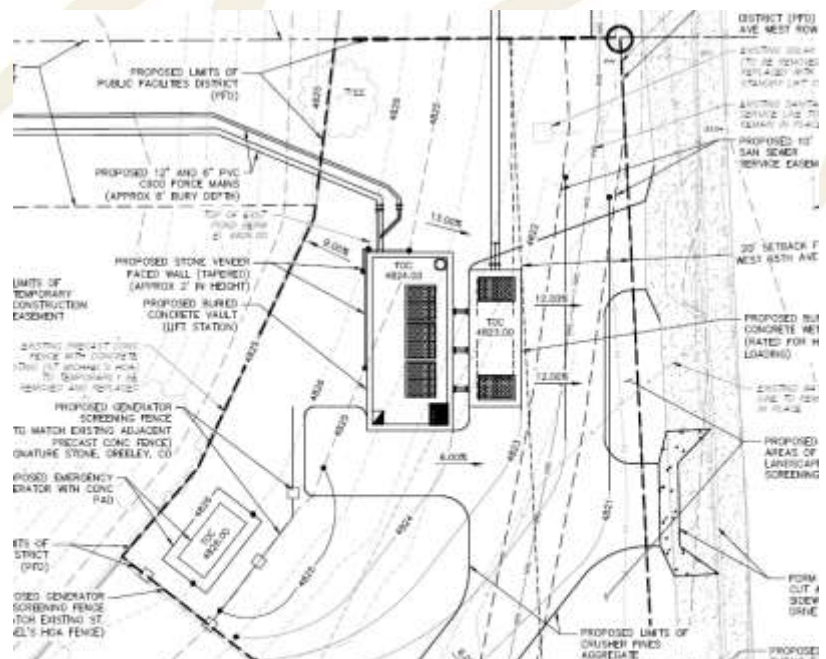


A decorative wavy line in a light beige color spans the top of the slide.

Questions?



Lift Station Site



Concept Landscape Plan - Lift Station Site

